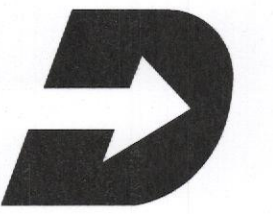




L2M
811 Cromwell Park Drive, Suite 113
Cromwell Business Park at BWI
Glen Burnie, Maryland 21061
L2M@l2m.com
Phone 410.863.1302
Fax 410.863.1308

L2M
ARCHITECTS

I certify that these documents were prepared or approved by me, and that I am a duly licensed architect under the laws of the state of Maryland Lic. 8839 Exp. 07 December 2017.



DASH IN
STORE #079
QUARTERFIELD RD - SEVERN, MD

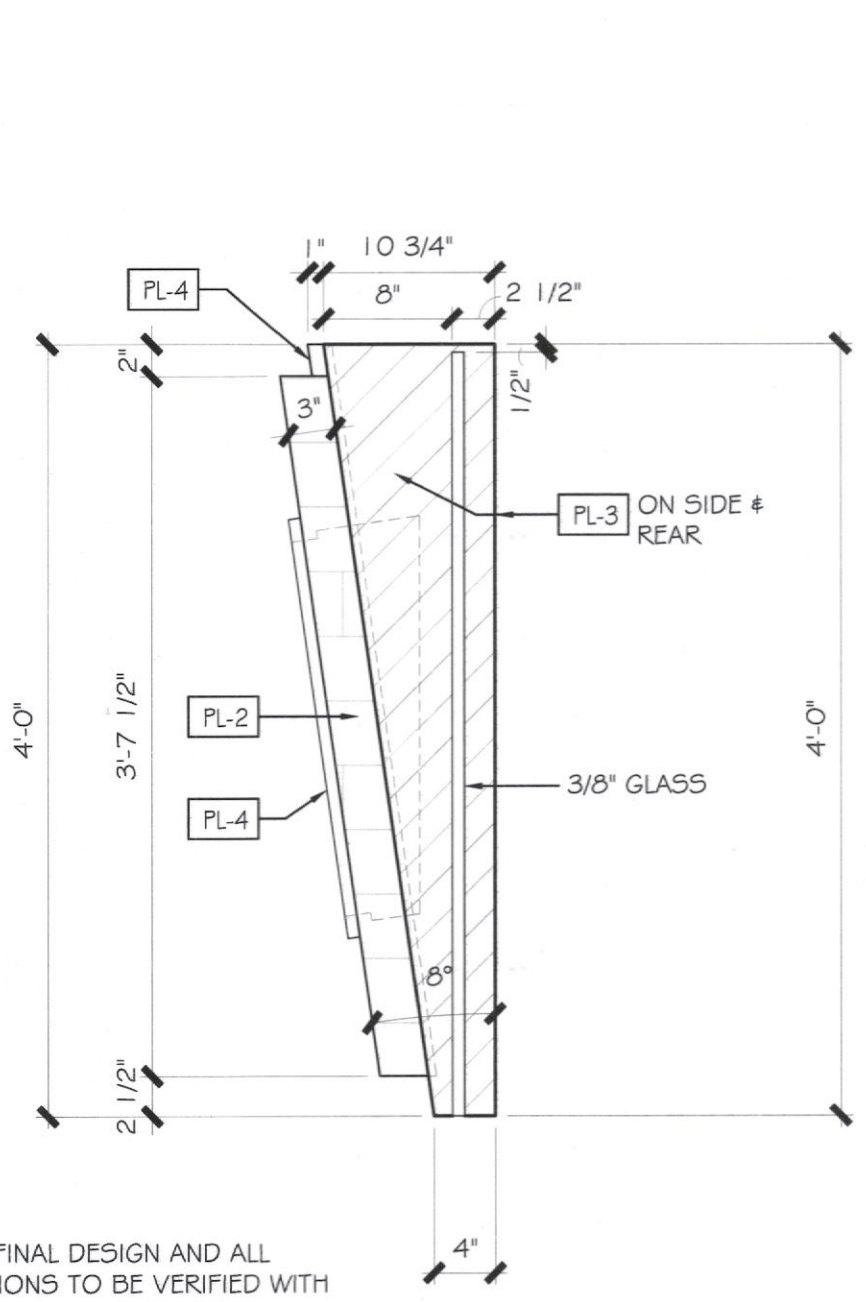
REV. #	ISSUE / DESCRIPTION	DATE

SHEET TITLE:
MISCELLANEOUS DETAILS

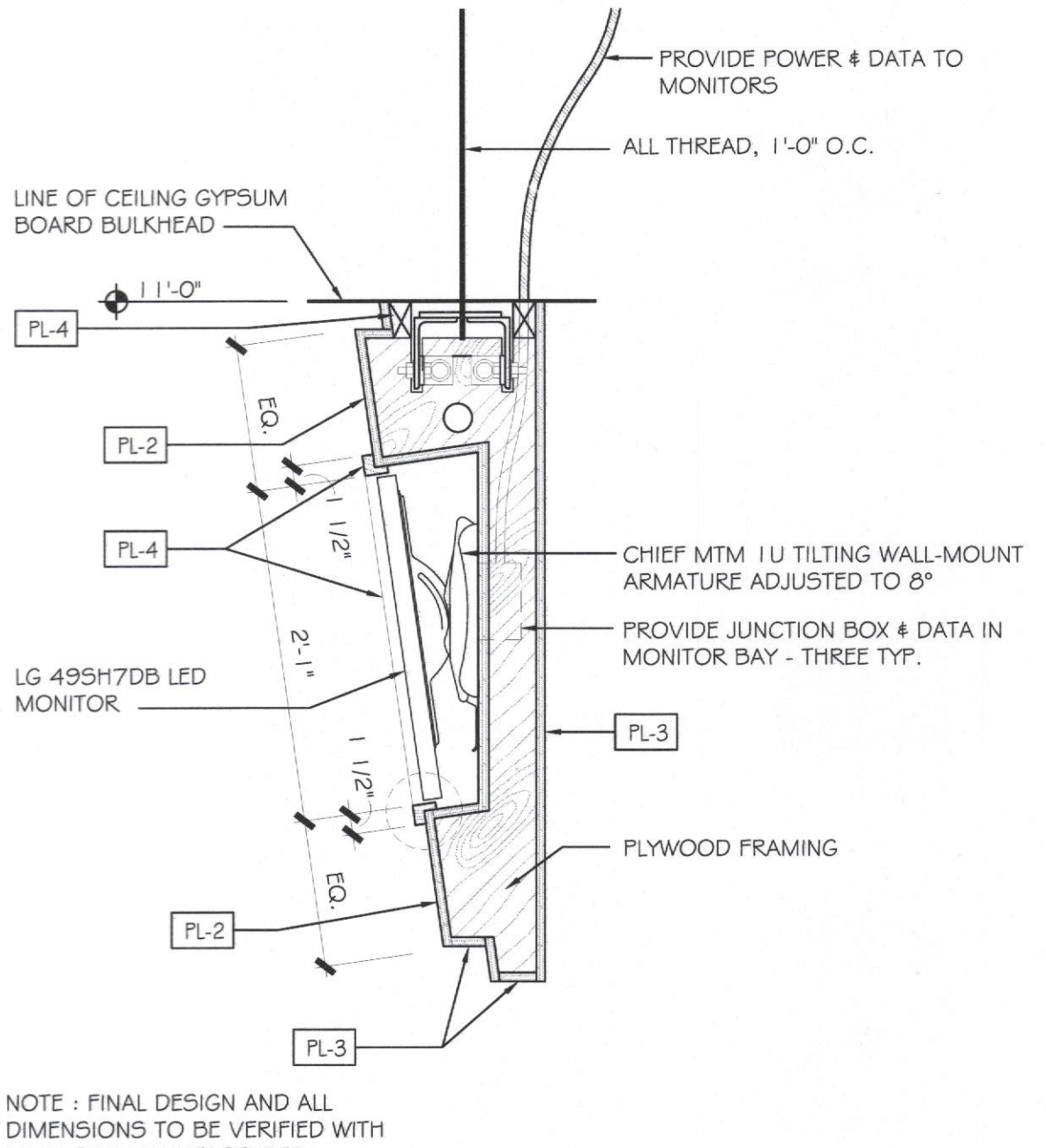
DRAWING DATE:
01 APRIL 2017
DRAWN BY:
STAFF
REVIEWED BY:
SDL
PROJECT #
15.108
SHEET #

A-503

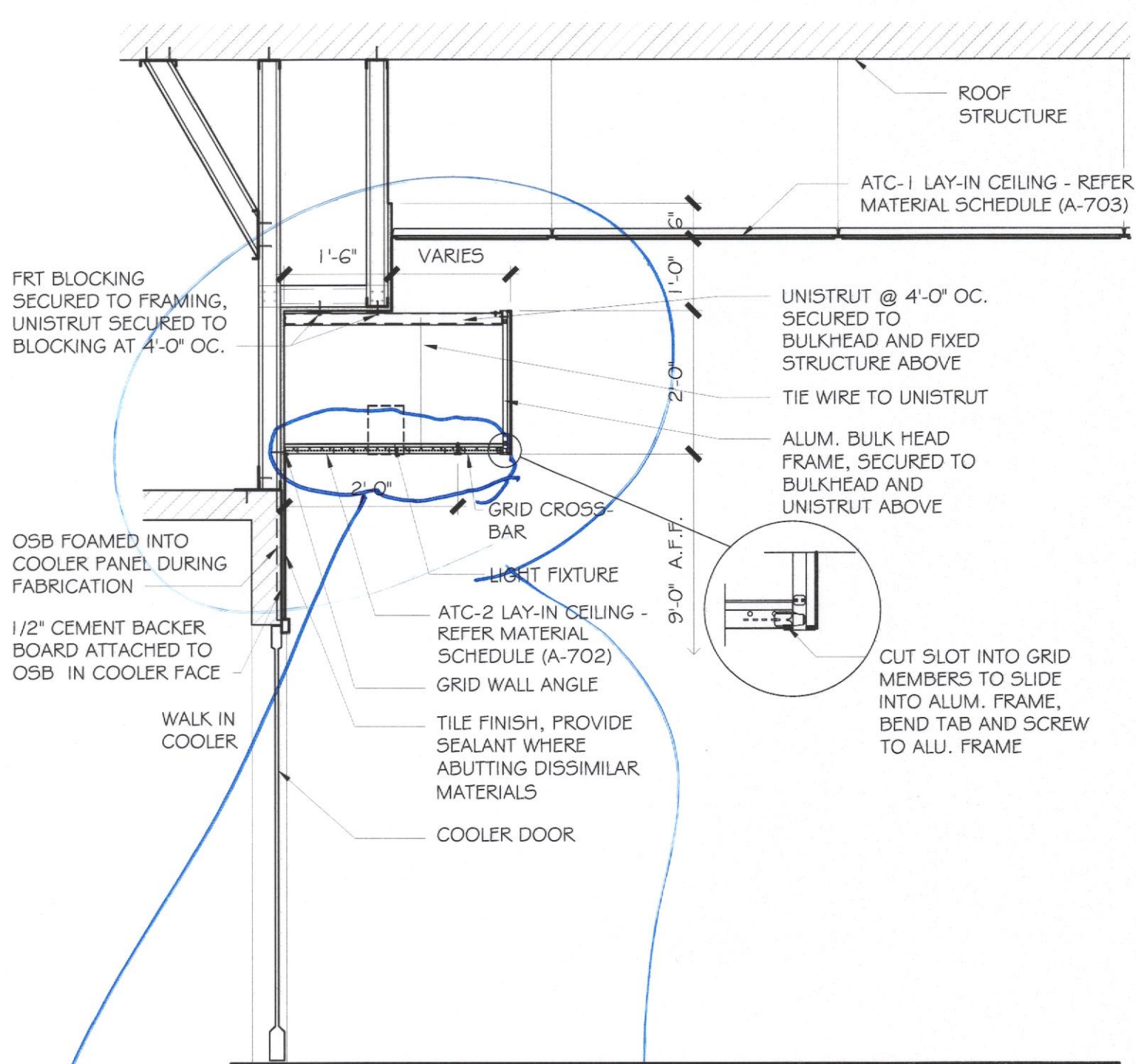
FILE NAME:
15.108 - A-503.dwg



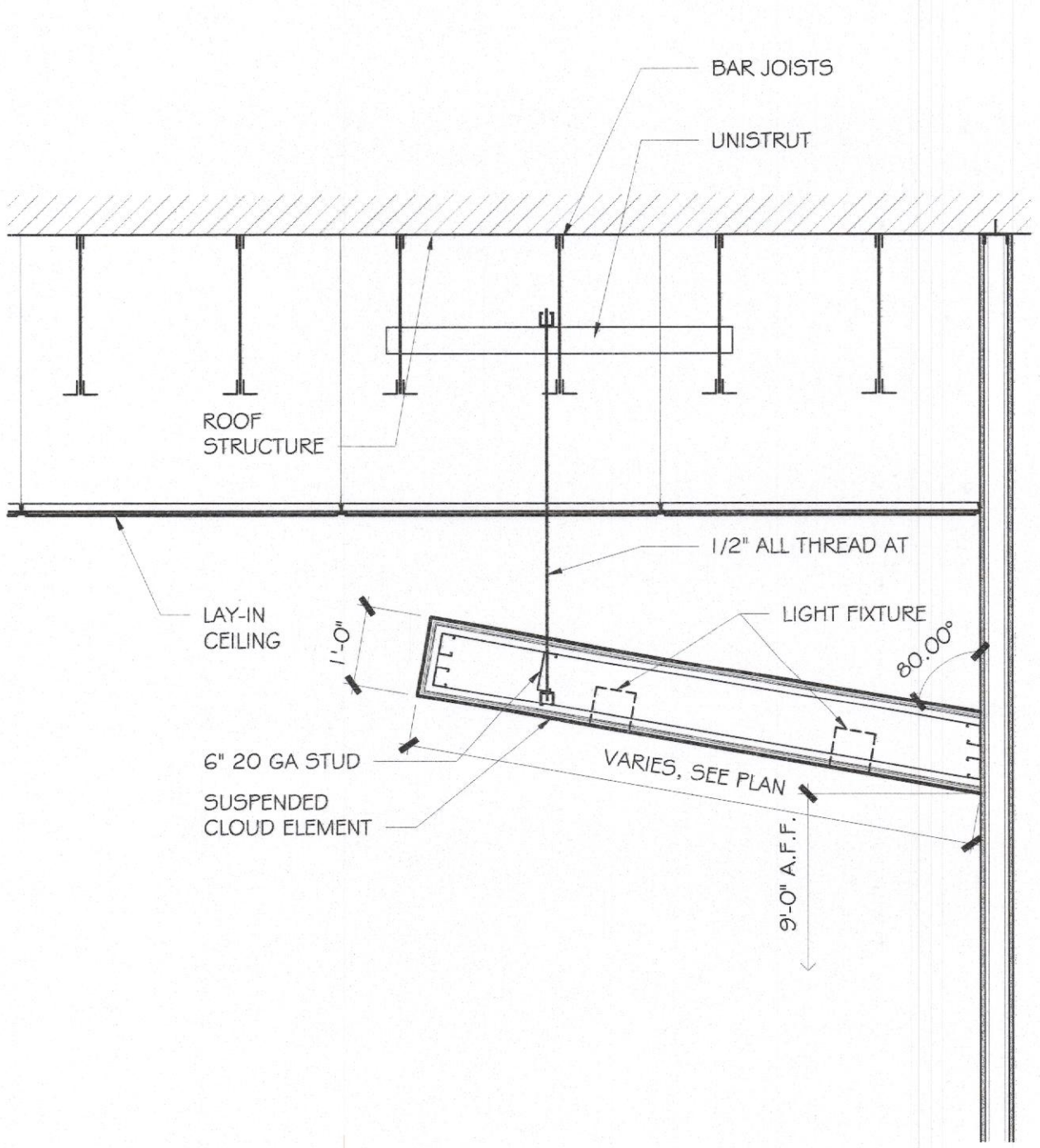
A8
MADE TO ORDER DISPLAY BOARD SIDE ELEVATION
SCALE: 1" = 1'-0"



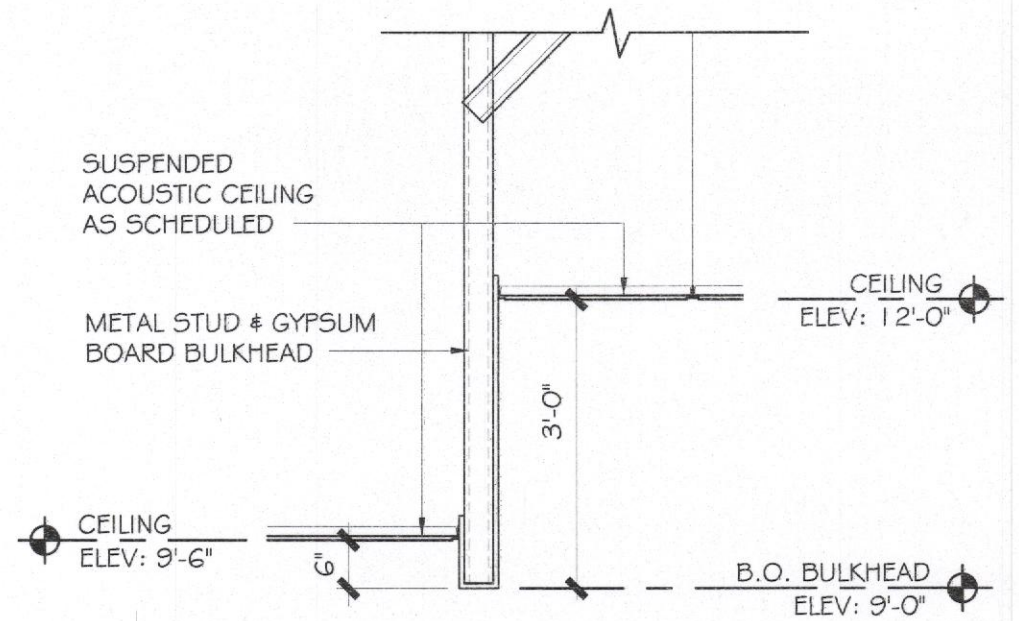
E8
MADE TO ORDER DISPLAY BOARD SECTION
SCALE: 1" = 1'-0"



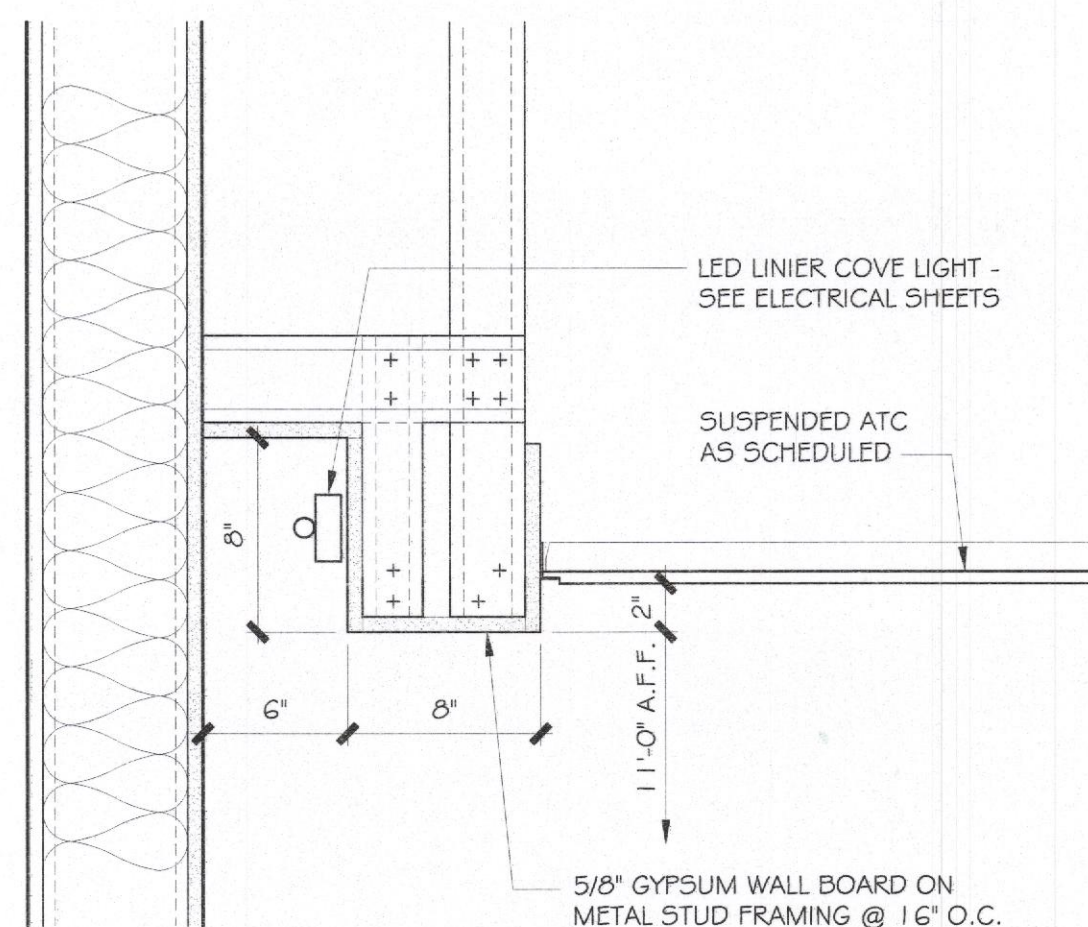
J8
BULKHEAD SECTION
SCALE: 1/2" = 1'-0"



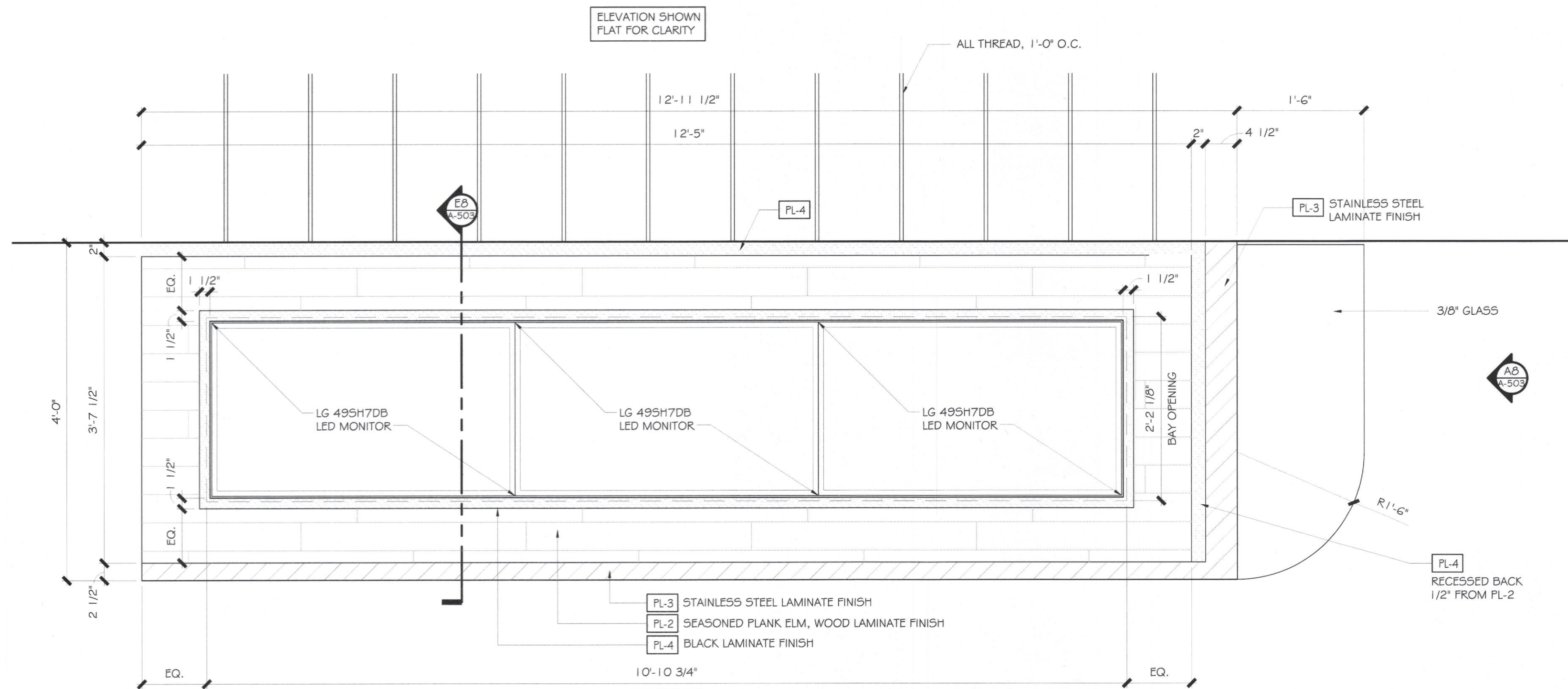
N8
BULKHEAD SECTION
SCALE: 1/2" = 1'-0"



N5
BULKHEAD DETAIL
SCALE: 1/2" = 1'-0"



N1
LIGHT COVE DETAIL
SCALE: 1 1/2" = 1'-0"



A1
MADE TO ORDER DISPLAY BOARD ELEVATION
SCALE: 1" = 1'-0"

Div 9
Novac Birek