

DOOR SCHEDULE

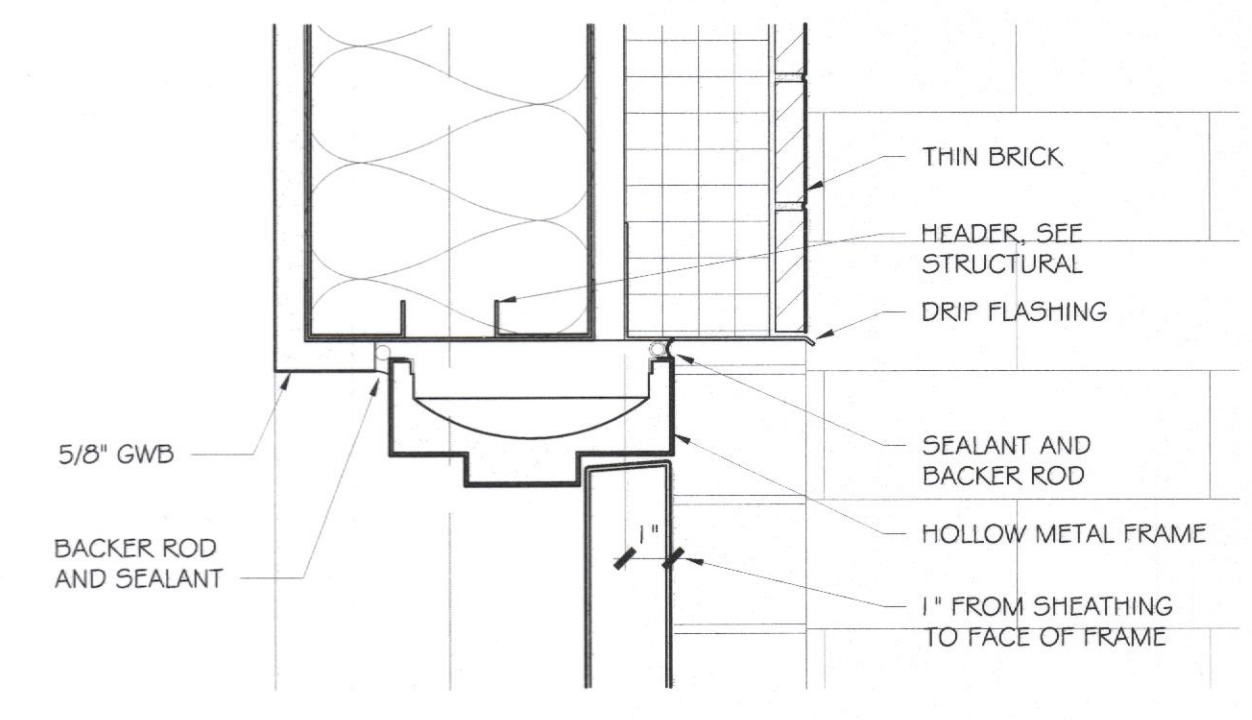
TAG	DOOR							FRAME		DETAILS			ASSEMBLY		REMARKS	
	LEAFS	WIDTH	HEIGHT	THK.	ELEV.	MATERIAL	FINISH	ELEV.	MATERIAL	FINISH	HEAD	JAMB	SILL	HDW.SET		RATING
01	2	6'-0"	7'-0"	---	A	ALUM	---	B	ALUM	---	---	---	---	1	---	---
02	1	3'-0"	7'-0"	1-3/4"	B	HM	PT-2	2	HM	PT-2	D10/A-601	D7/A-601	H1/A-601	2	---	1
03	1	3'-0"	7'-0"	1-3/4"	B	HM	PT-2	1	HM	PT-2	D10/A-601	D7/A-601	H1/A-601	2	---	1
04	1	3'-0"	7'-0"	1-3/4"	B	HM	PT-2	1	HM	PT-2	H4/A-601	H7/A-601	---	3	---	1,4
05	1	3'-0"	7'-0"	1-3/4"	B	HM	PT-2	1	HM	PT-2	H4/A-601	H7/A-601	---	3	---	1,4
06	1	3'-0"	7'-0"	1-3/4"	C	ST STL	---	---	---	---	---	---	---	4	---	1,3
07	1	3'-0"	7'-0"	1-3/4"	C	ST STL	---	---	---	---	---	---	---	4	---	1,3
08	1	3'-0"	7'-0"	1-3/4"	B	HM	PT-2	1	HM	PT-2	H4/A-601	H7/A-601	---	5	---	1

GENERAL DOOR SCHEDULE NOTES

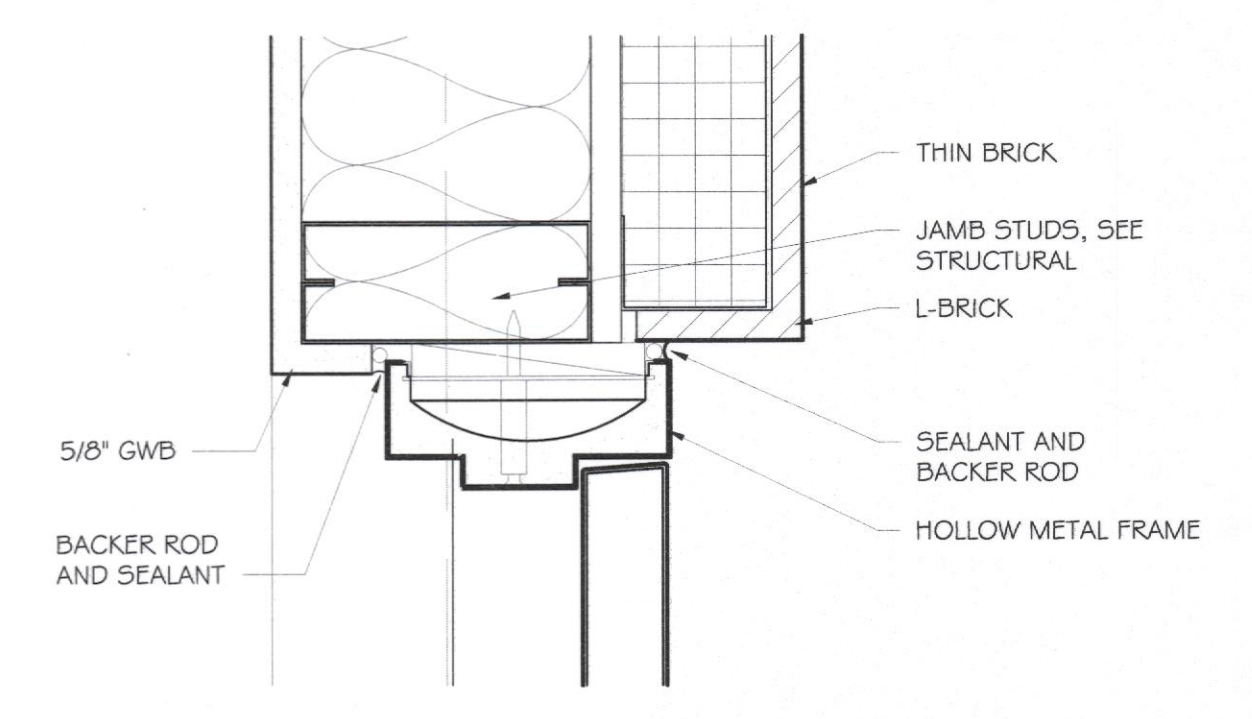
- REFERENCE BUILDING FLOOR PLAN FOR DOOR SWING.
- ALL DOORS SHALL COMPLY WITH THE REQUIREMENTS OF A.D.A.G.C. SECTION 4.13 - 2009 AMERICAN NATIONAL STANDARDS FOR ACCESSIBLE AND USABLE BUILDINGS AND FACILITIES.
- DOUBLE-SWING DOOR TO BE EQUIVALENT TO ELIASON CORPORATION, MODEL SCP-3, 3/4" THICK COMPOSITE WOOD PANEL WITH BRUSHED STAINLESS STEEL FACE BOTH SIDES, FURNISH WITH ROUND VISION WINDOW, FHM DRYWALL FRAME AND ALL HARDWARE. INSTALL IN ACCORDANCE WITH MANUFACTURE'S WRITTEN INSTRUCTIONS.
- UNDERCUT DOOR 3/4"

DOOR SCHEDULE ABBREVIATIONS

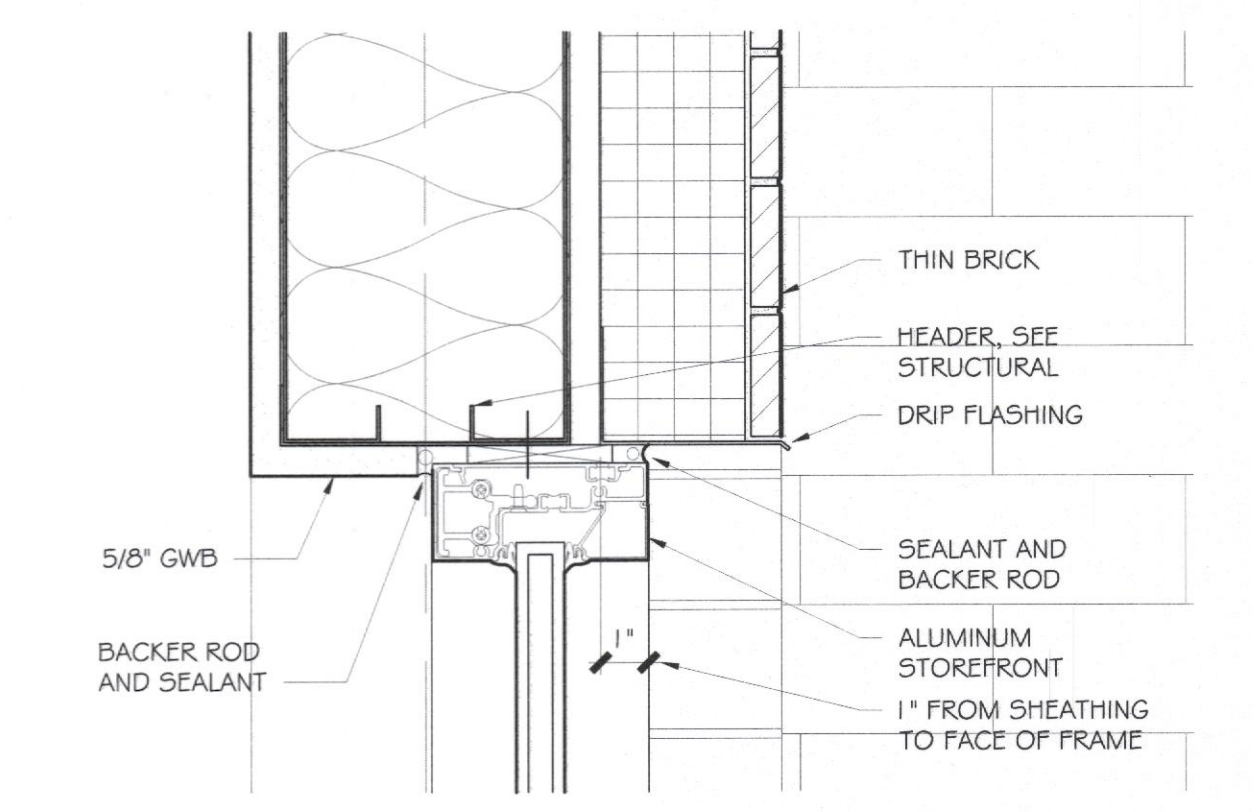
MTL	METAL	HMC	HOLLOW METAL CORE
ALUM	ALUMINUM	WD	WOOD
GLA	GLASS	SMC	SOLID MINERAL CORE
PC	PARTIAL CORE	SWC	SOLID WOOD CORE



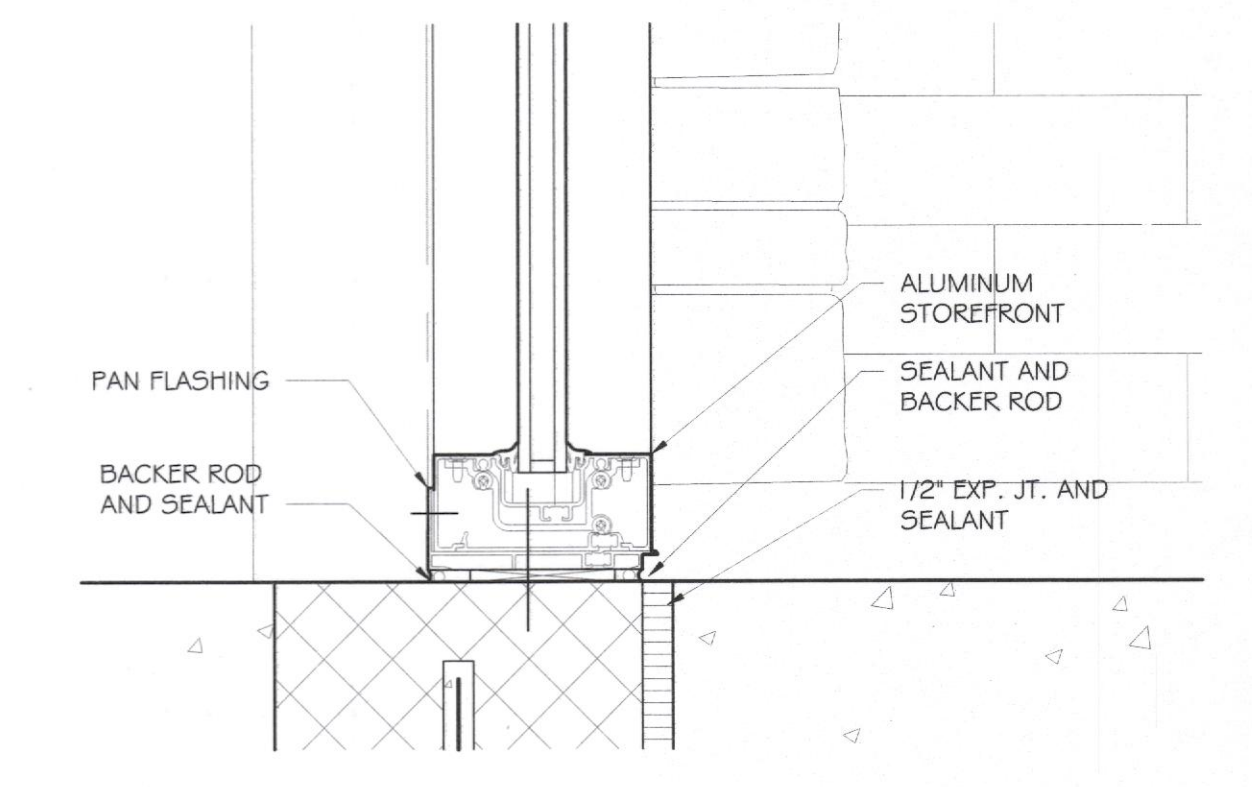
D10 HEAD DETAIL
 SCALE: 3" = 1'-0"



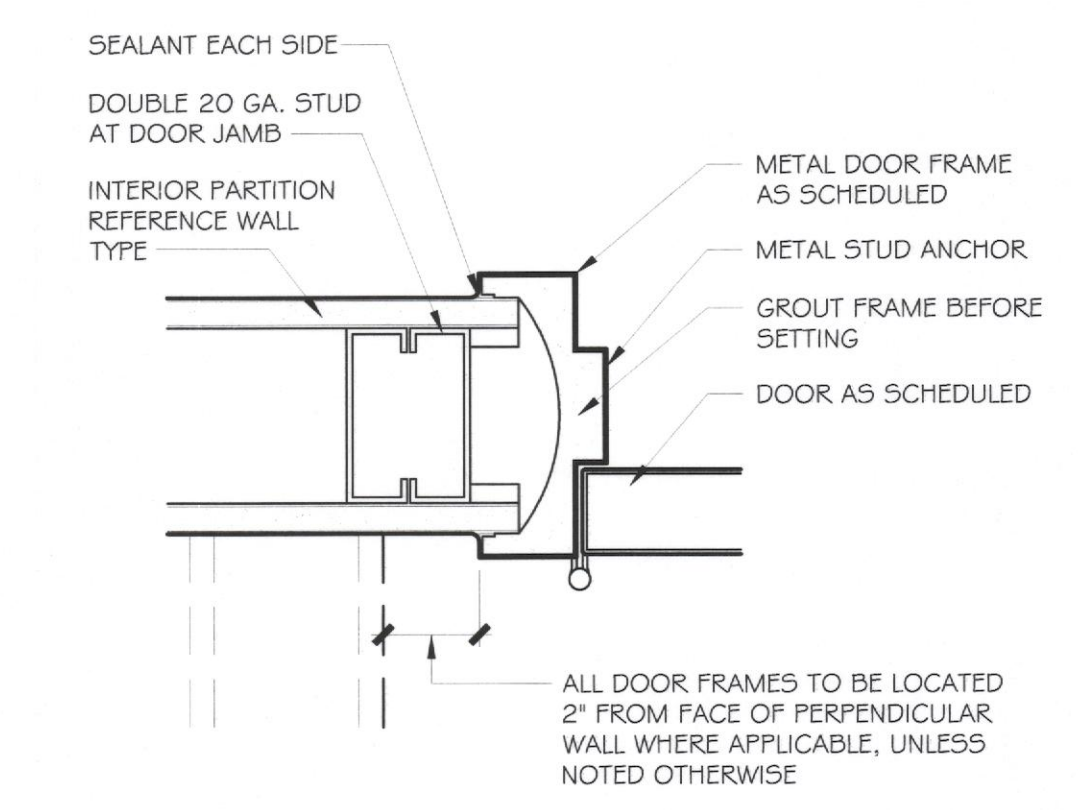
D7 JAMB DETAIL
 SCALE: 3" = 1'-0"



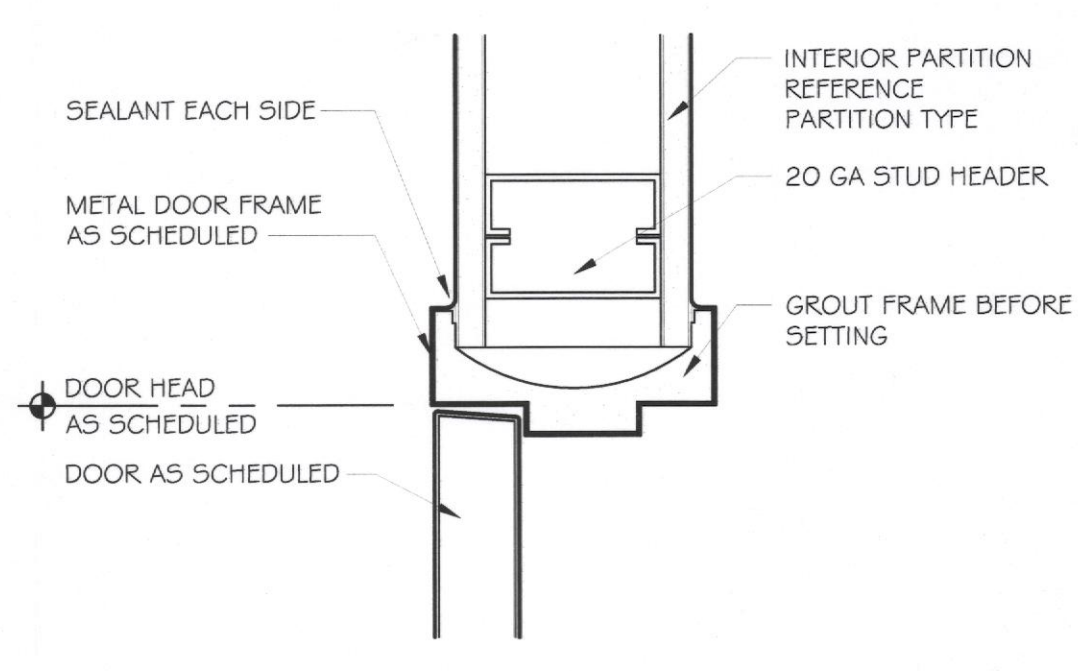
D4 HEAD DETAIL
 SCALE: 3" = 1'-0"



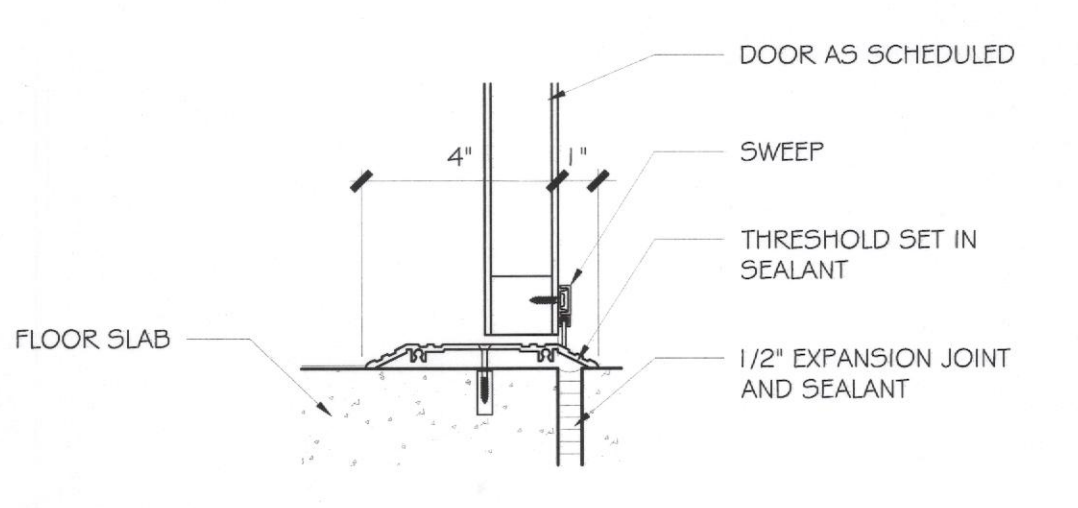
D1 SILL DETAIL
 SCALE: 3" = 1'-0"



H7 TYP. INT. DOOR JAMB DETAIL
 SCALE: 3" = 1'-0"

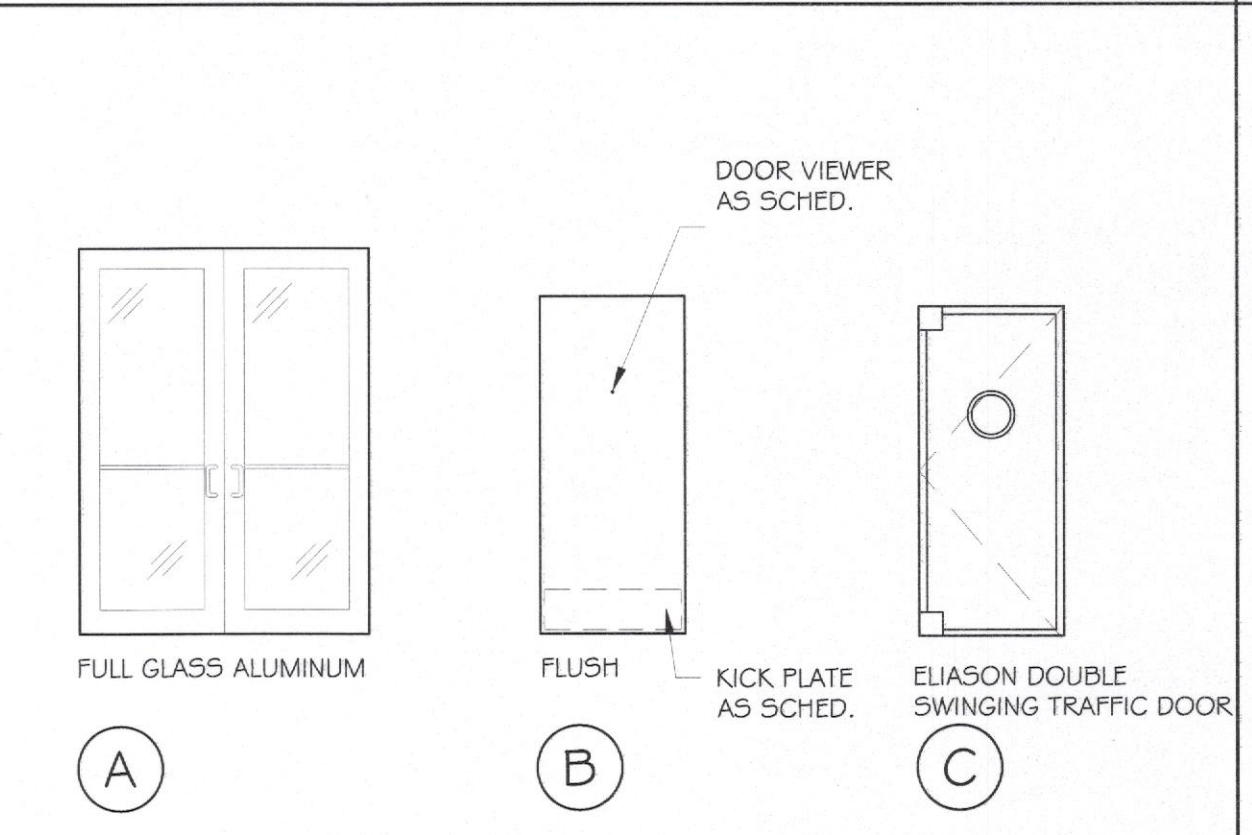


H4 TYP. INT. DOOR HEAD DETAIL
 SCALE: 3" = 1'-0"

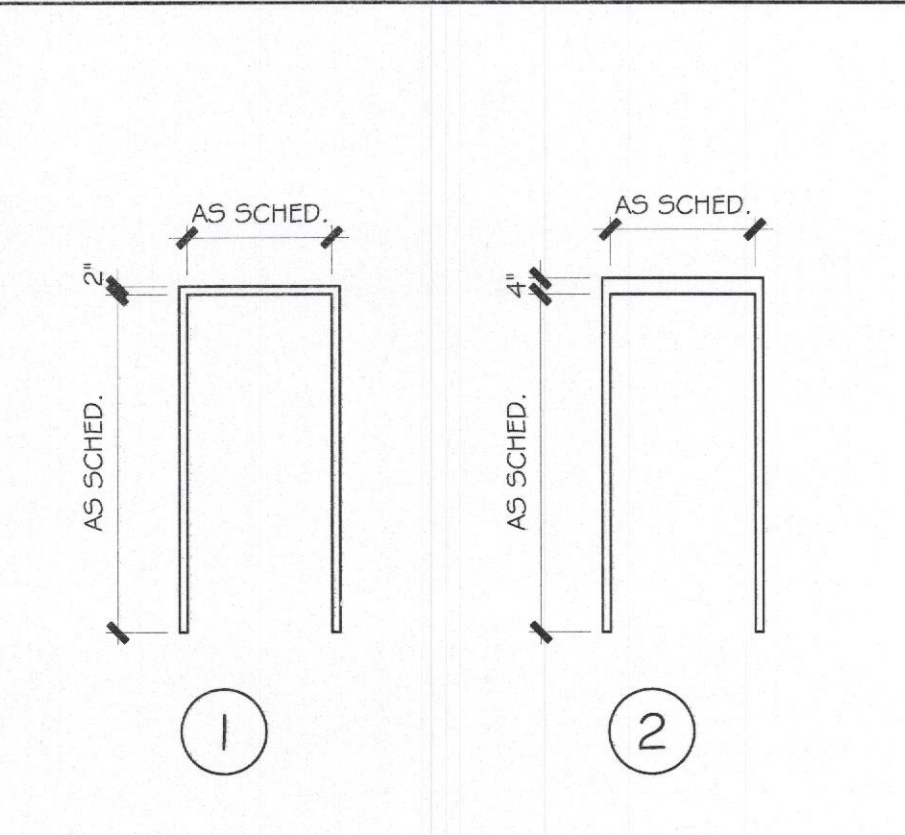


H1 THRESHOLD DETAIL
 SCALE: 3" = 1'-0"

DOOR TYPE ELEVATIONS



FRAME TYPE ELEVATIONS



DOOR SCHEDULE REMARKS

- INSTALL DOOR IN CONFORMANCE WITH MANUFACTURE'S INSTRUCTIONS. MAKE ELECTRICAL CONNECTIONS AS REQUIRED. COORDINATE LOCATIONS OF CONNECTION POINTS WITH ELECTRICAL CONTRACTOR.

GENERAL NOTES

- SEE BELOW FOR ALL HARDWARE GROUPS. COORDINATE KEYING WITH OWNER.
- ALL HARDWARE SHALL COMPLY WITH ICC / ANSI A117.1-2003.

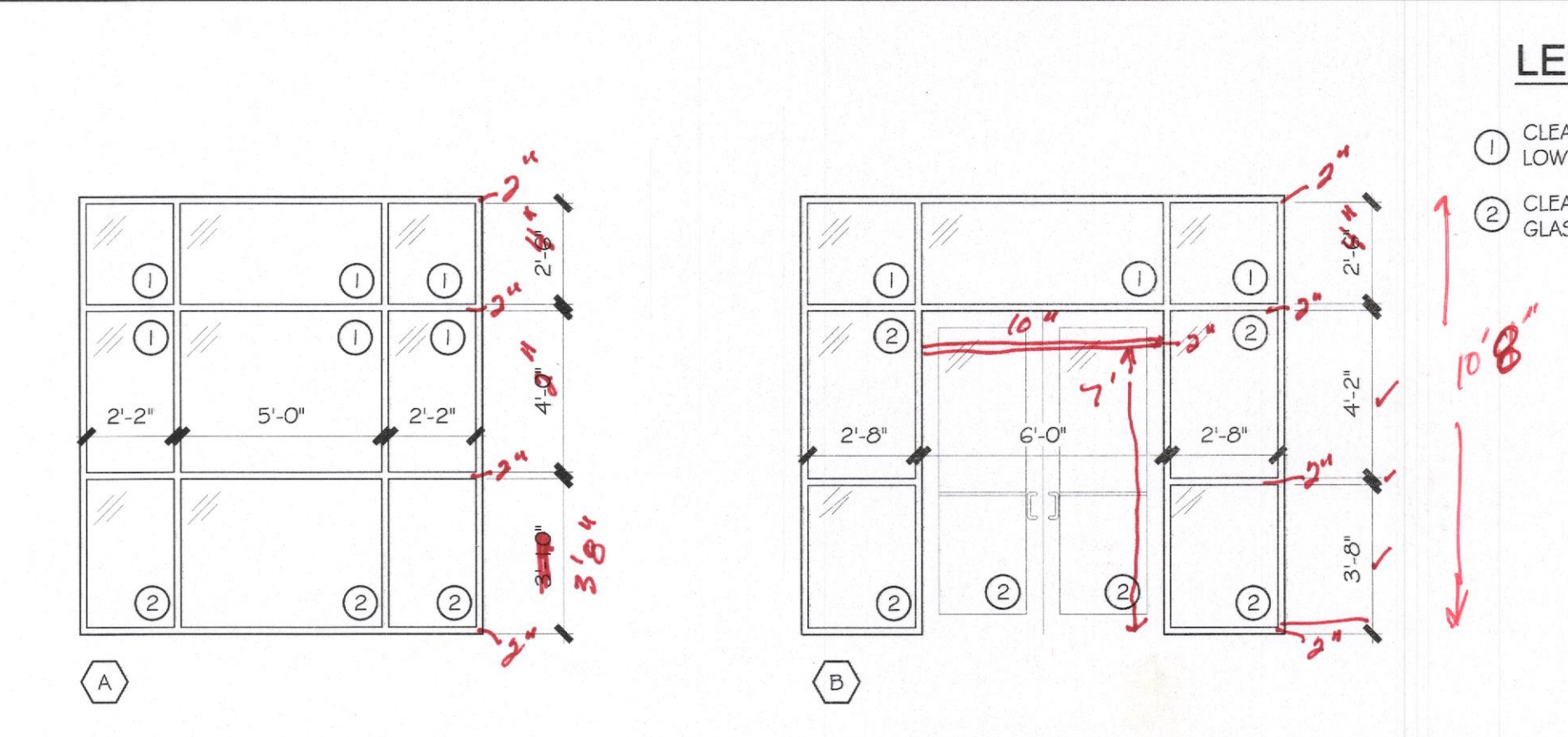
HARDWARE SCHEDULE

SET NO.	QUAN.	TYPE	MANUFACTURER	FINISH
1	EA	CYLINDER	MFR. STANDARD, WITH KEYWAY PER OWNER	626
ALL OTHER HARDWARE BY DOOR SUPPLIER.				
SET NO. 2	QUAN.	TYPE	MANUFACTURER	FINISH
1-1/2	PR.	RINGS	HAGER BB1191, 4 1/2 X 4 1/2	US32D
1	EA	EXIT DEVICE	VONI DUPRIN 99-EO	US32D
1	EA	CLOSER	LCN 4100 SERIES, PARALLEL ARM, WITH STOP	AL
1	SET	DOOR SEAL	REESE 769A, HEAD AND JAMBS	AL
1	EA	SWEEP	REESE 323A	AL
1	EA	THRESHOLD	REESE 5205A	AL
2	EA	KICK PLATE	IVES 5400, 8" X 34", BOTH SIDES OF DOOR	US32D
SET NO. 3	QUAN.	TYPE	MANUFACTURER	FINISH
1-1/2	PR.	RINGS	HAGER BB1191, 4 1/2 X 4 1/2	US26D
1	EA	PUSH	IVES 6200, 4 X 1 1/2	US26D
1	EA	PULL	IVES 5303, 4 X 1 1/2	US26D
1	EA	CLOSER	LCN 4000 SERIES	AL
1	EA	WALL STOP	IVES 407-1/2	626
2	EA	KICK PLATE	IVES 6400, 8" X 34", BOTH SIDES OF DOOR	US32D
SET NO. 4	QUAN.	TYPE	MANUFACTURER	FINISH
1-1/2	PR.	RINGS	HAGER BB1191, 4 1/2 X 4 1/2	US26D
1	EA	LOCKSET	HAGER 3470, ARC, KEYWAY PER OWNER	US26D
1	EA	WALL STOP	IVES 407-1/2	626
1	EA	KICK PLATE	IVES 6400, 8" X 34", PUSH SIDE	US32D

WINDOW SCHEDULE

TAG	SIZE			GLAZING	FRAME		DETAILS			REMARKS
	WIDTH	HEIGHT	SILL HEIGHT		MATERIAL	FINISH	HEAD	JAMB	SILL	
A	10'-0"	10'-10"	0'-0"	IGU	ALUM	CLEAR	D4/A-601	D7/A-601	D1/A-601	
B	12'-0"	10'-10"	0'-0"	IGU	ALUM	CLEAR	D4/A-601	D7/A-601	D1/A-601	

WINDOW ELEVATIONS



- LEGEND**
- CLEAR INSULATING GLASS, LOW E
 - CLEAR TEMPERED INSULATING GLASS, LOW E