



L2M  
811 Cromwell Park Drive, Suite 113  
Cromwell Business Park at BWI  
Glen Burnie, Maryland 21061  
L2M@L2M.com  
Phone: 410.863.1302  
Fax: 410.863.1308

L2M  
ARCHITECTS

I certify that these documents were prepared or approved by me, and that I am a duly licensed architect under the laws of the State of Maryland Lic. #8338 Exp. 07 December 2017.



**DASH IN**  
STORE #079  
QUARTERFIELD RD - SEVERN, MD

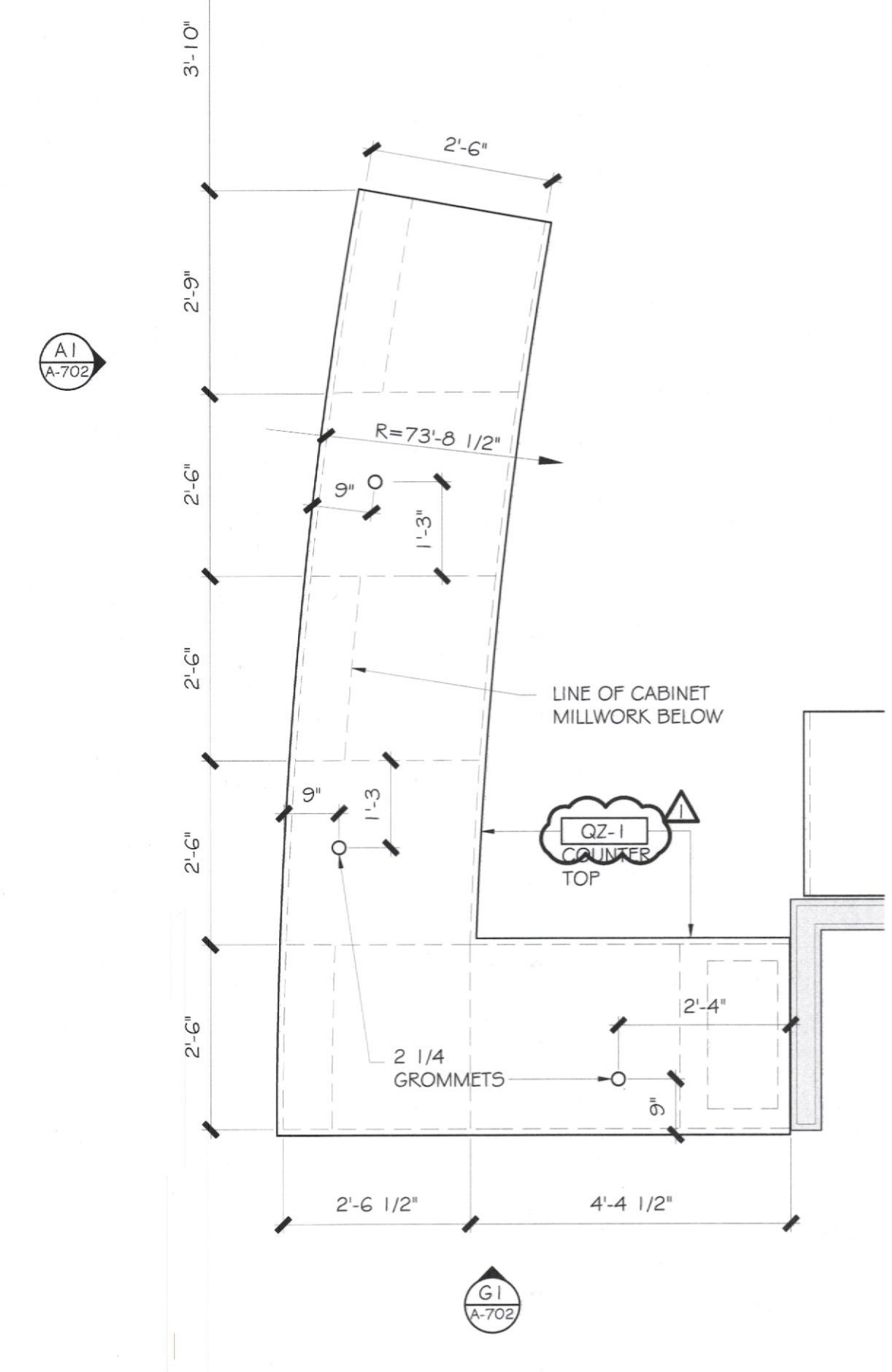
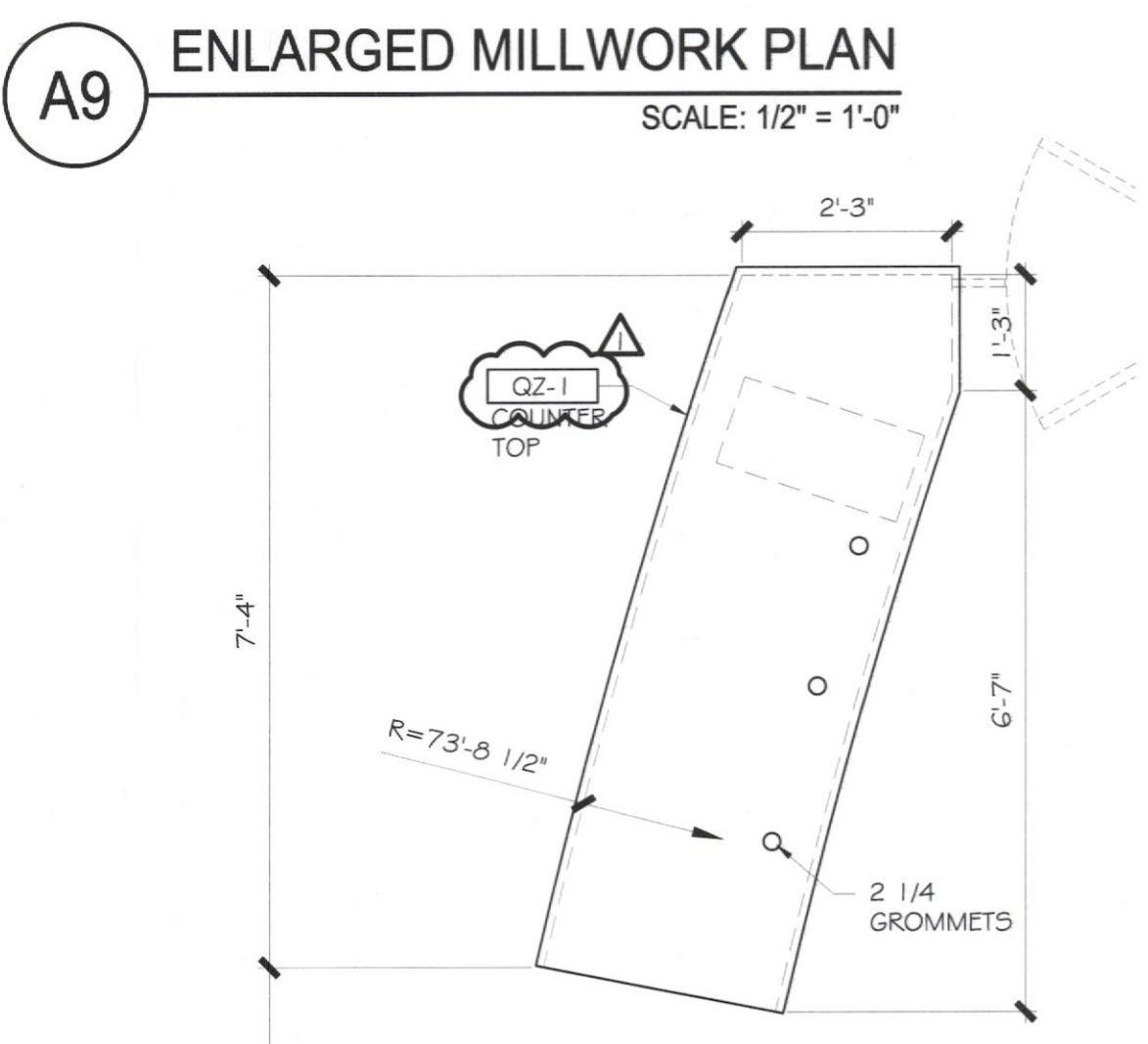
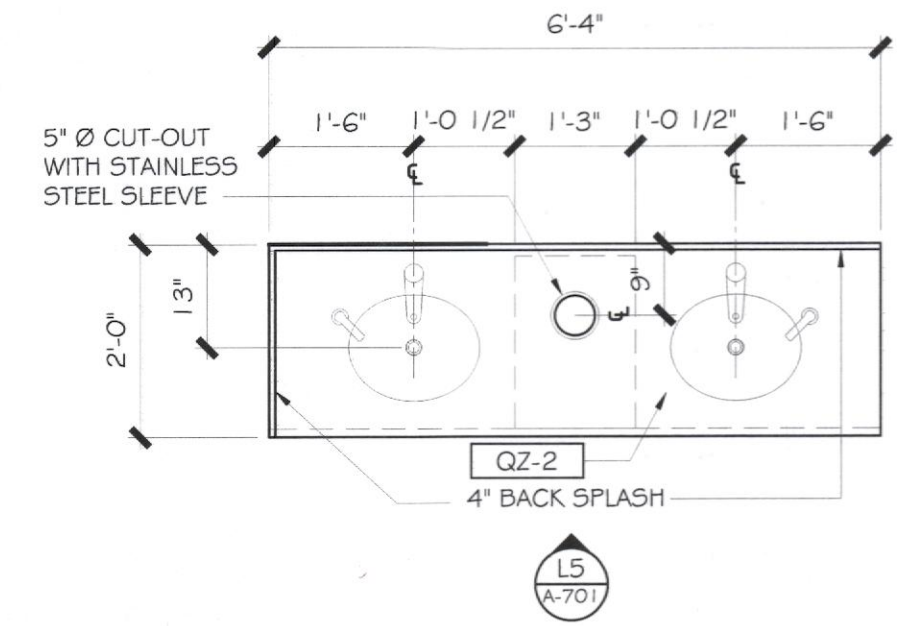
REV. #	ISSUE / DESCRIPTION	DATE
1	OWNER COMMENTS	5/10/2017

SHEET TITLE:  
**MILLWORK DETAILS**

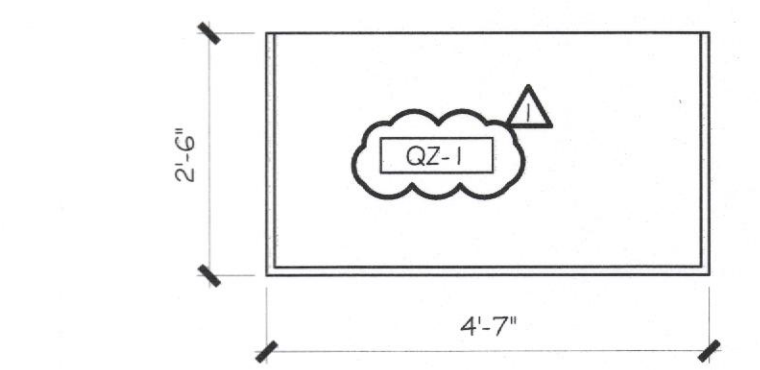
DRAWING DATE:  
**01 APRIL 2017**  
DRAWN BY:  
**STAFF**  
REVIEWED BY:  
**SDL**  
PROJECT #:  
**15.108**  
SHEET #

**A-701**

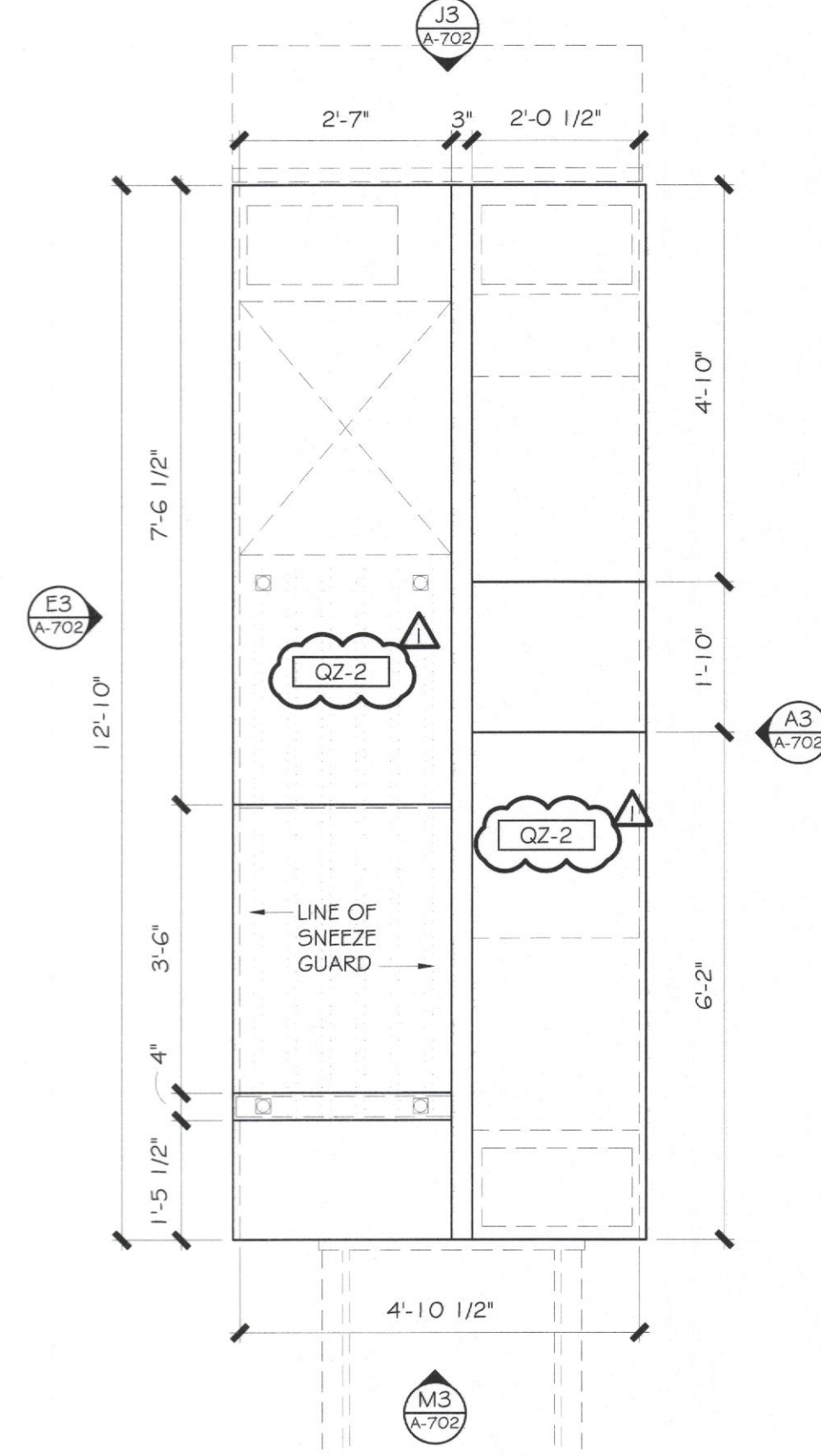
FILE NAME:  
15.108 - A-701.dwg



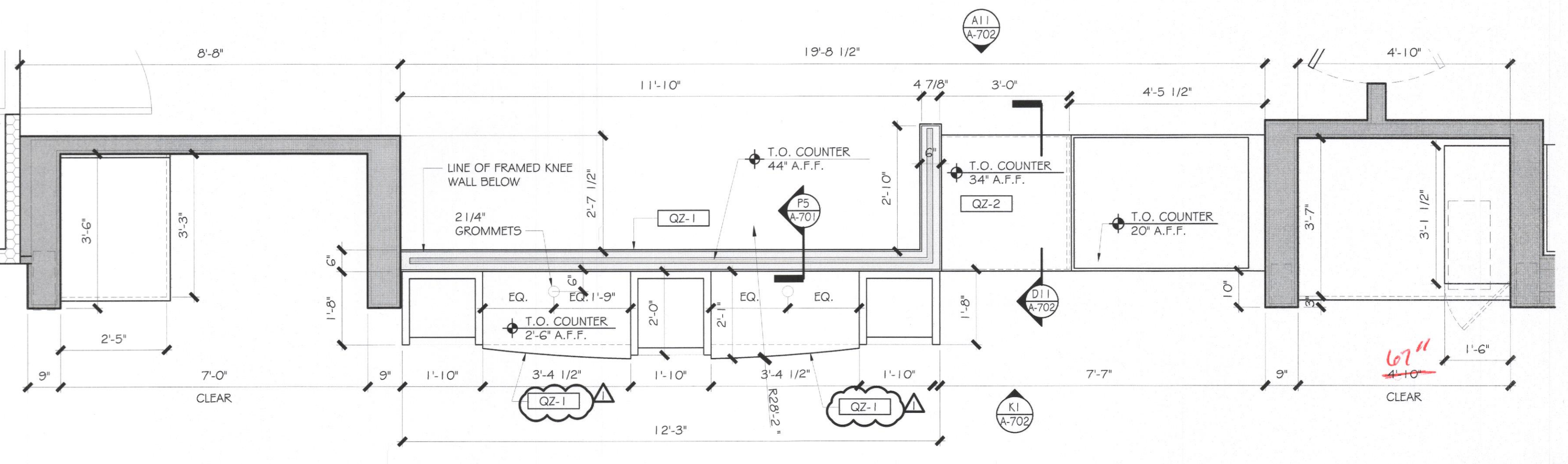
**A1** ENLARGED MILLWORK PLAN  
SCALE: 1/2" = 1'-0"



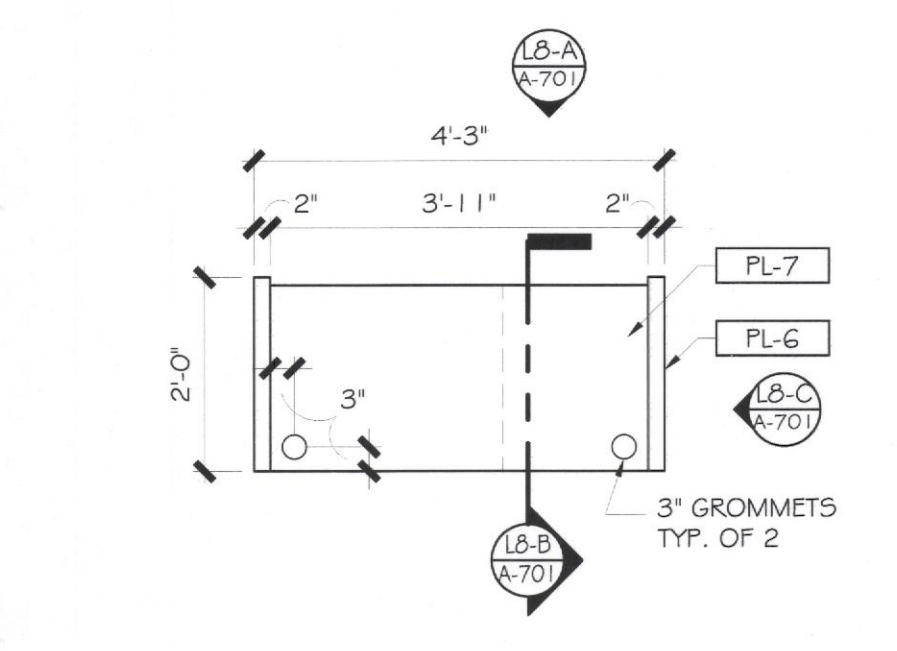
**E10** MILLWORK PLAN  
SCALE: 1/2" = 1'-0"



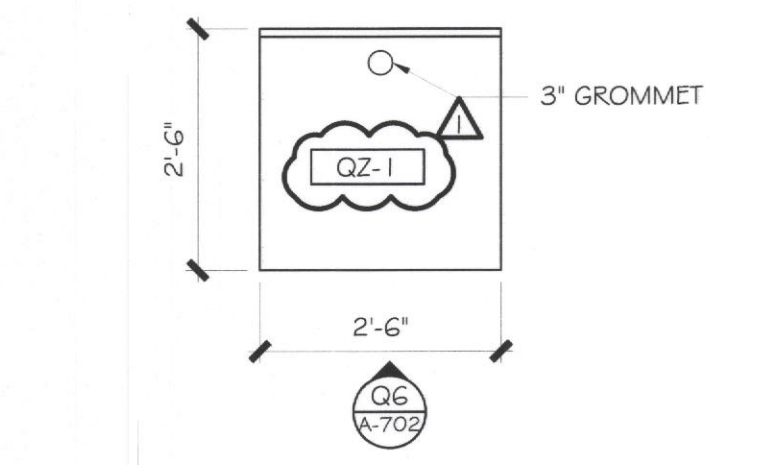
**E5** ENLARGED MILLWORK PLAN  
SCALE: 1/2" = 1'-0"



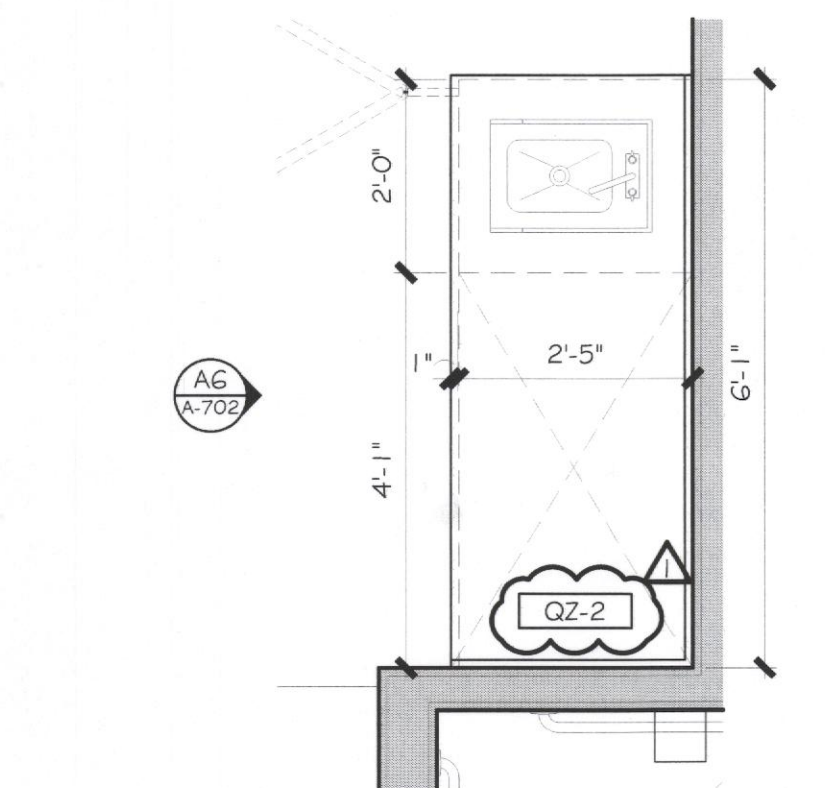
**E1** ENLARGED MILLWORK PLAN  
SCALE: 1/2" = 1'-0"



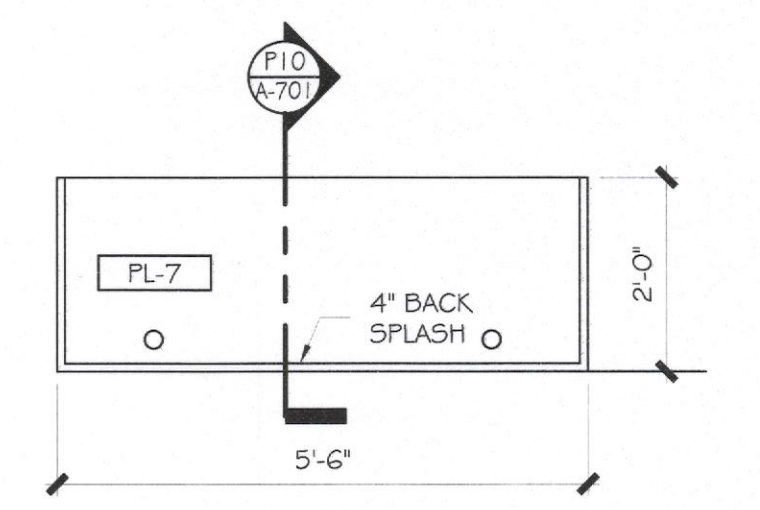
**H10** TRAINING DESK MILLWORK PLAN  
SCALE: 1/2" = 1'-0"



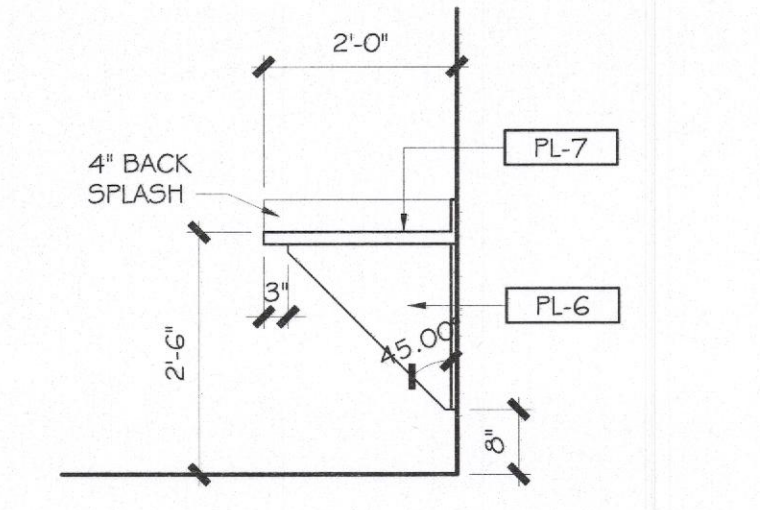
**H8** MILLWORK PLAN  
SCALE: 1/2" = 1'-0"



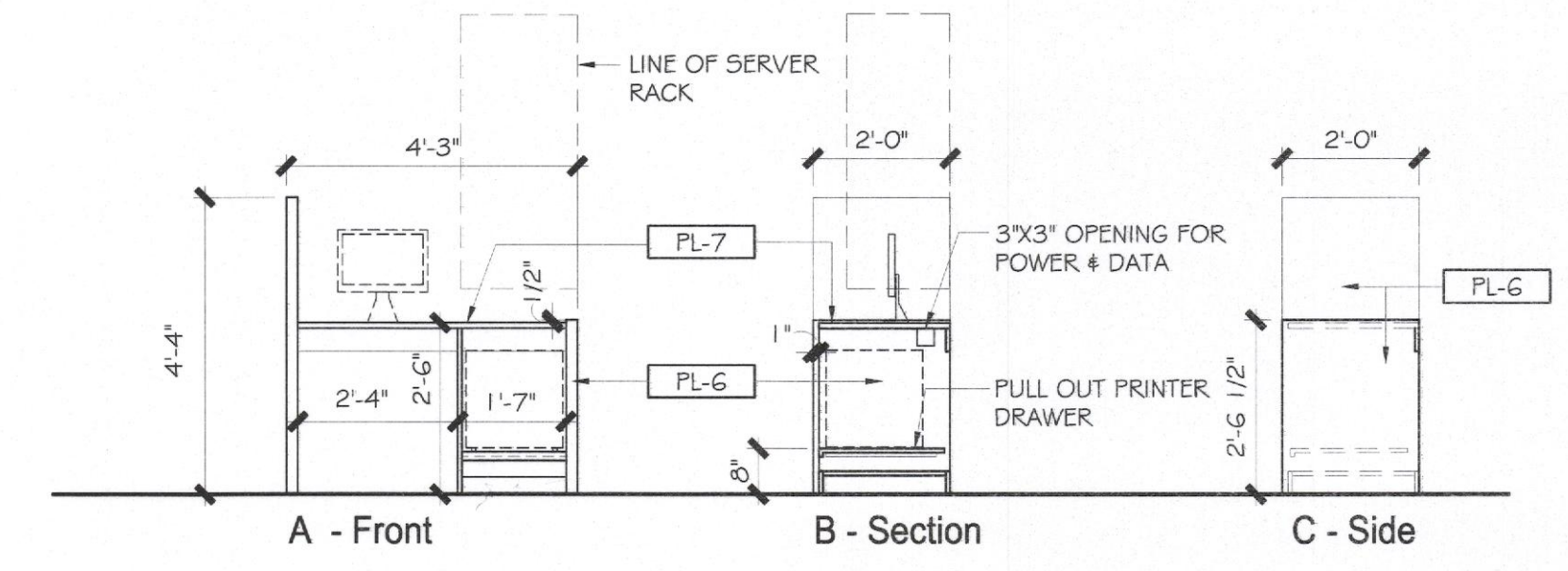
**H5** ENLARGED MILLWORK PLAN  
SCALE: 1/2" = 1'-0"



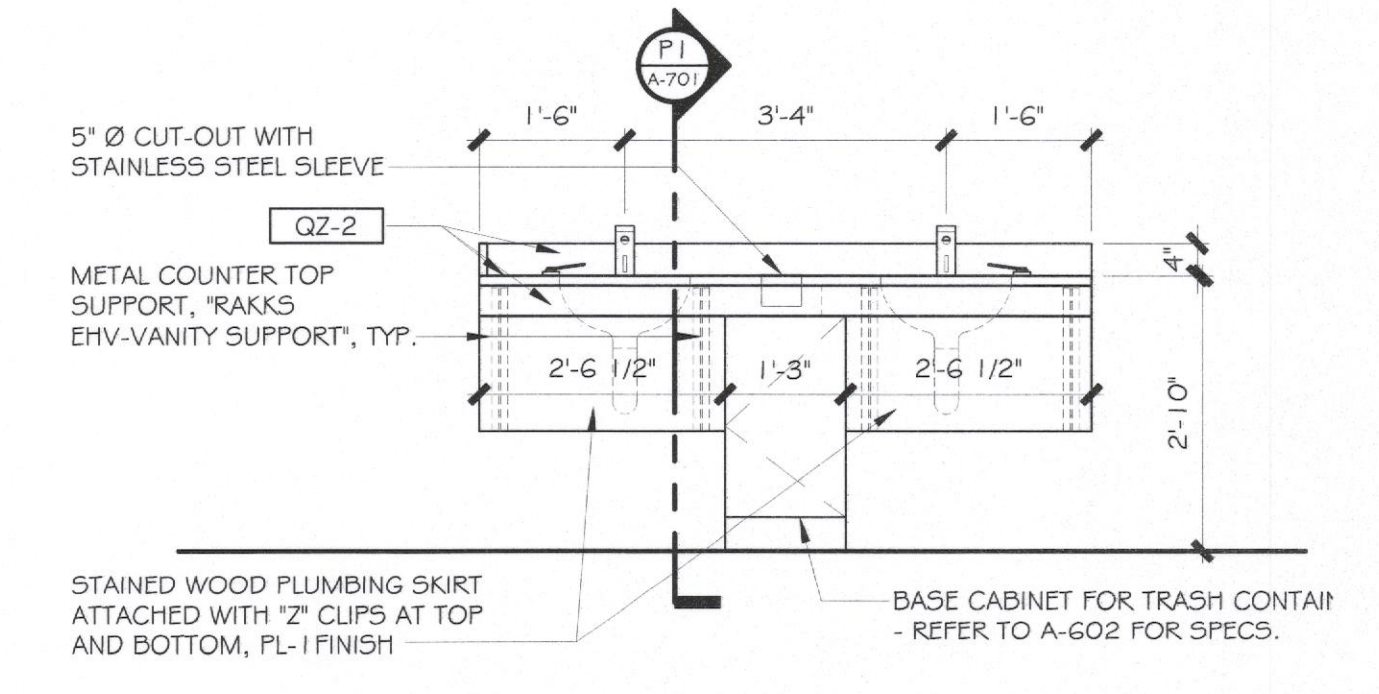
**L10** OFFICE DESK COUNTER  
SCALE: 1/2" = 1'-0"



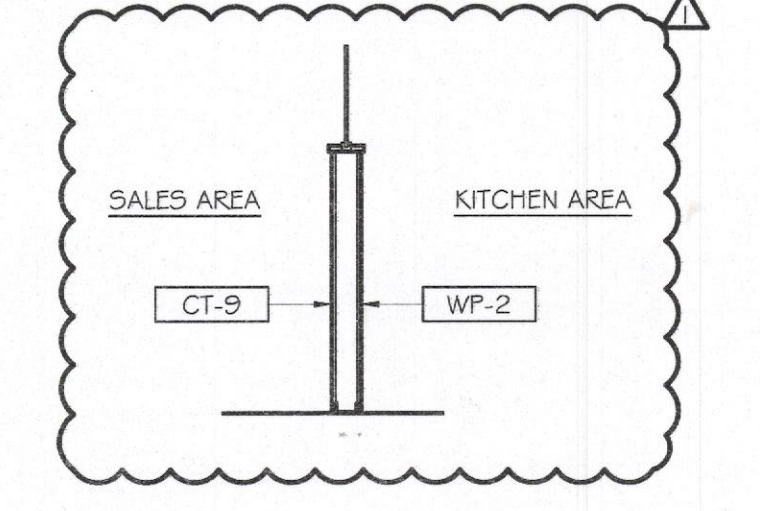
**P10** OFFICE DESK COUNTER  
SCALE: 1/2" = 1'-0"



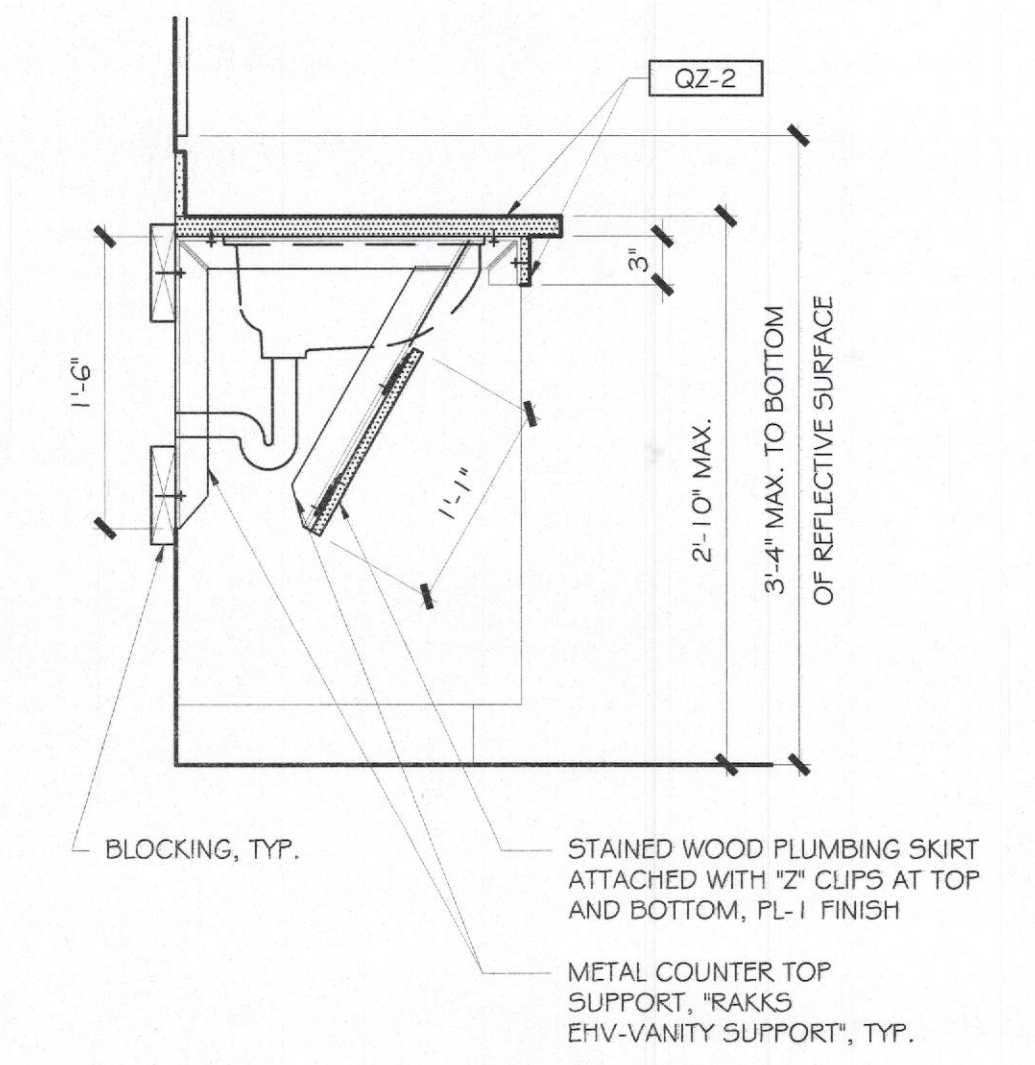
**L8** TRAINING DESK MILLWORK ELEVATION / SECTION  
SCALE: 3/8" = 1'-0"



**L5** VANITY MILLWORK ELEVATIONS  
SCALE: 3/8" = 1'-0"



**P5** MILLWORK SECTION  
SCALE: 3/8" = 1'-0"



**P1** VANITY MILLWORK SECTION  
SCALE: 1" = 1'-0"