




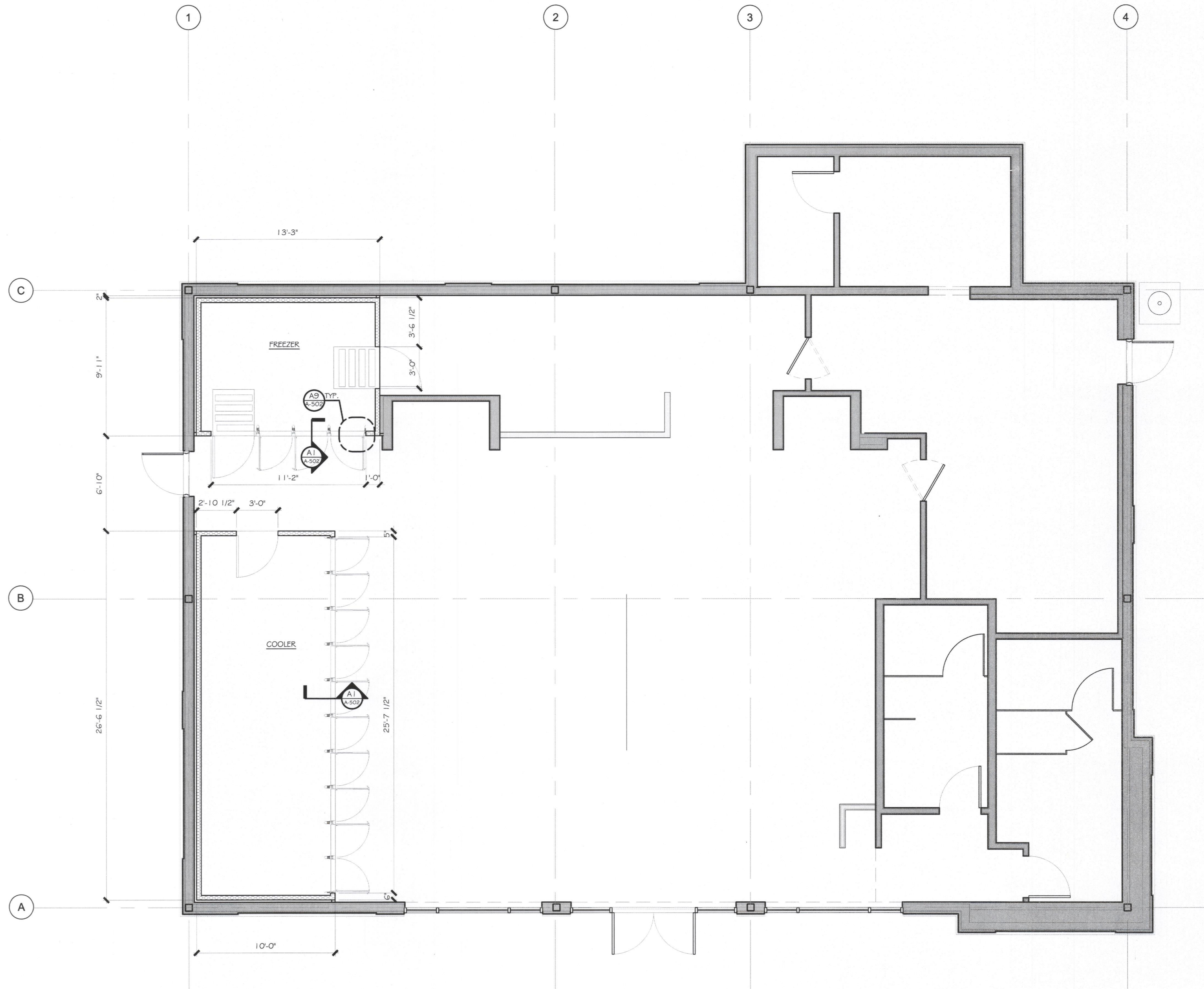


WALL / PARTITION LEGEND

-  EXISTING WALL / PARTITION
-  GWB LOW PARTITION
-  GWB PARTITION
-  COOLER / FREEZER WALL PANELS
-  STOREFRONT OR GLASS PARTITION



D1 FLOOR PLAN
SCALE: 1/4" = 1'-0"

L2M
ARCHITECTS

L2M
811 Cromwell Park Drive, Suite 113
Cromwell Business Park at BWI
Glen Burnie, Maryland 21061
L2M@L2M.com
Phone 410.863.1302
Fax 410.863.1308

L2M
ARCHITECTS

I certify that these documents were prepared or approved by me, and that I am a duly licensed architect under the laws of the state of Maryland Lic. 8839 Exp. 07 December 2017.



DASH IN
STORE #079
QUARTERFIELD RD - SEVERN, MD

REV. #	ISSUE / DESCRIPTION	DATE
1	OWNER COMMENTS	5/10/2017

SHEET TITLE:
COOLER PLAN

DRAWING DATE:
01 APRIL 2017

DRAWN BY: **STAFF** REVIEWED BY: **SDL**

PROJECT # **15.108**

A-703

FILE NAME:
15.108 A-703 .dwg