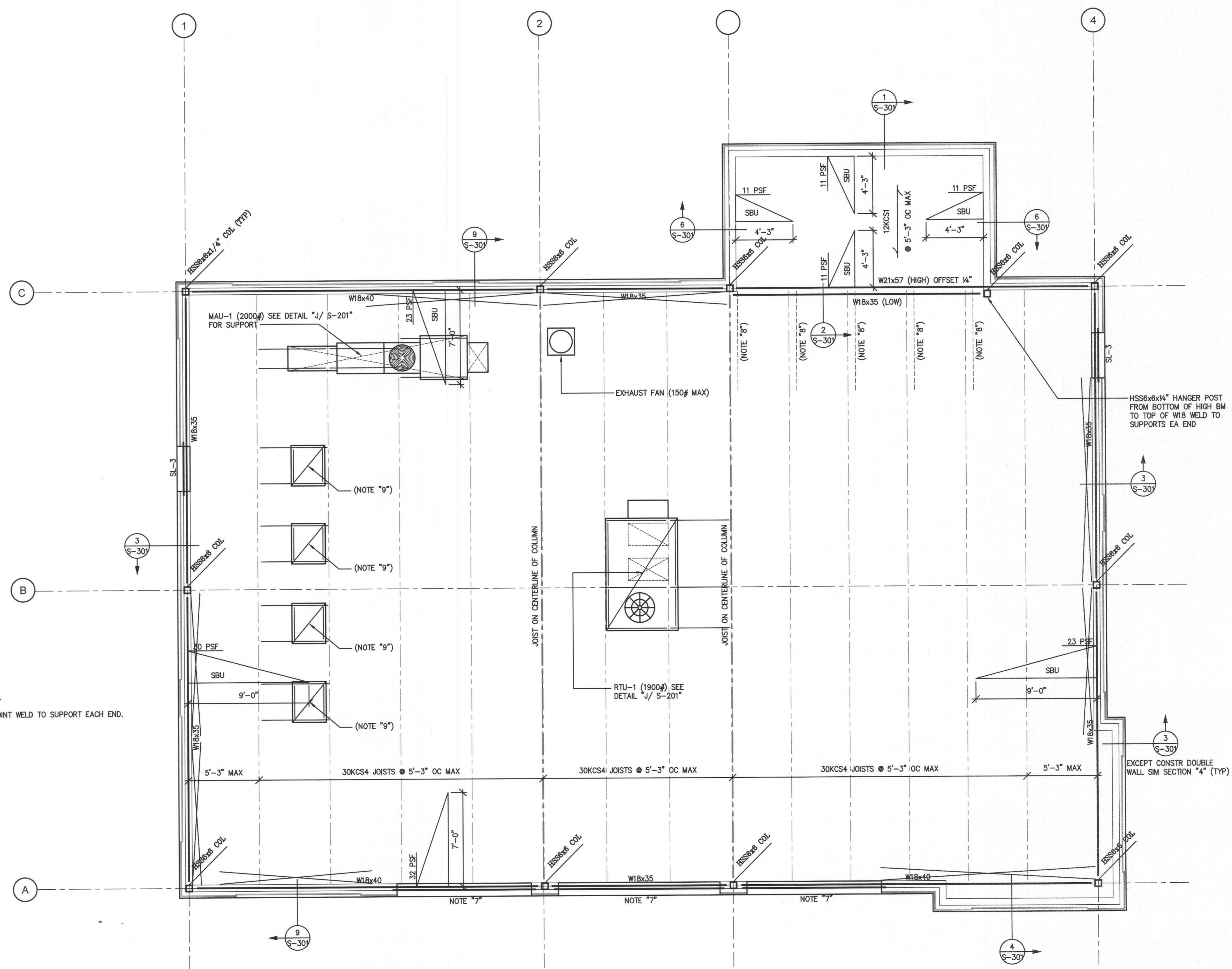


Roof Framing Plan

1/4" = 1'-0"

PLAN NOTES:

- ENTIRE ROOF SHALL BE 1 1/2" MINIMUM 22 GAUGE GALVANIZED DECK. MIN. S = 0.19IN3 MIN. I = 0.17IN4 3 SPAN.
- SEE ARCHITECTURAL DRAWINGS FOR ELEVATION TOP OF FRAMING.
- TOP OF STEEL JOISTS 1 1/2" BELOW TOP OF METAL DECK UNLESS OTHERWISE NOTED IN PLAN THUS.
- TOP OF STEEL BEAMS + PLATES 2 1/4" BELOW TOP OF STEEL JOISTS UNLESS OTHERWISE NOTED THUS (-0").
- PROVIDE JOIST ON CENTER LINE COLUMN (TYPICAL).
- DESIGN JOISTS FOR UPLIFT OF PSF.
- LIGHT GAGE BEAM AND JAMBS DESIGNED BY "LIGHT GAGE ENGINEER" (TYPICAL).
- L3x3x1/4" DIAGONAL BRACING FROM TOP OF LOW BEAM TO JOIST T.G. PANEL POINT WELD TO SUPPORT EACH END.
- MECHANICAL UNIT (150# MAXIMUM) SEE DETAIL "J/ S-201."



m
 L2M
 811 Cromwell Park Drive, Suite 113
 Cromwell Business Park #1011
 Glen Burnie, Maryland 21061
 L2M@L2M.com
 Phone 410.863.1302
 Fax 410.863.1308

SKARDA & ASSOCIATES
 STRUCTURAL CONSULTANTS, INC.
 2439 N. CHARLES STREET
 BALTIMORE, MARYLAND 21218
 Phone 410-366-9384
 Fax 410-366-9389
 S&A JOB NO. 16711

I certify that these documents were prepared or approved by me, and that I am a duly licensed professional engineer under the laws of the State of Maryland License# 200383 Expires: 18 March 2018.



DASH IN
 STORE #079
 QUARTERFIELD RD - SEVERN, MD

REV. #	ISSUE / DESCRIPTION	DATE

SHEET TITLE:
ROOF FRAMING PLAN

DRAWING DATE:
 01 APRIL 2017
 DRAWN BY: DLP
 REVIEWED BY: WES
 PROJECT # 16711
 SHEET #

S-102

FILE NAME:
 16711 - S-102.dwg