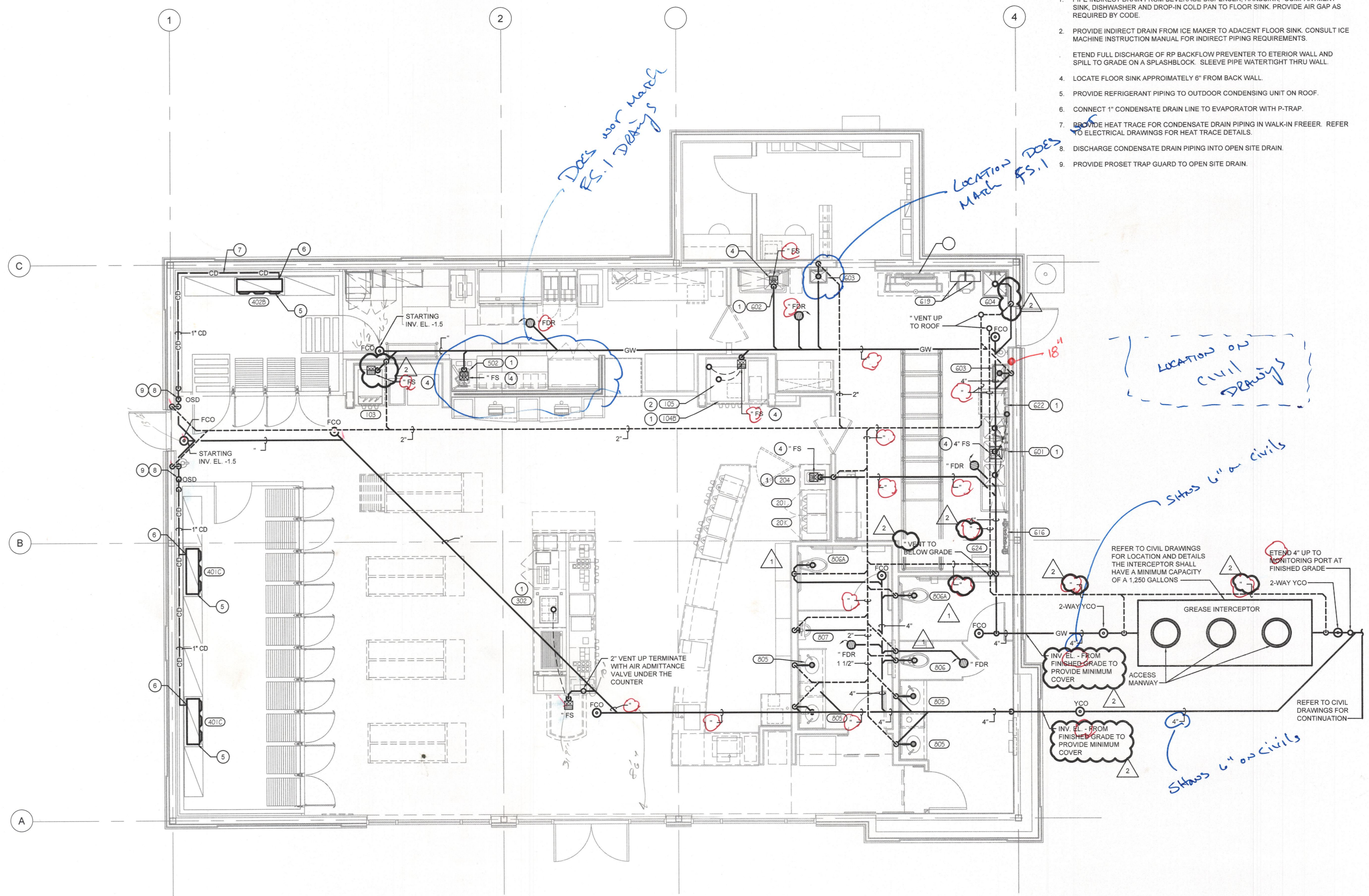


2 GENERAL NOTES

- REFER TO SANITARY RISER DIAGRAM ON DRAWING P-201 FOR ADDITIONAL PIPE SIZES.

- DRAWING NOTES** #
- PIPE INDIRECT DRAIN FROM BEVERAGE DISPENSER, HANDSINK, COMPARTMENT SINK, DISHWASHER AND DROP-IN COLD PAN TO FLOOR SINK. PROVIDE AIR GAP AS REQUIRED BY CODE.
 - PROVIDE INDIRECT DRAIN FROM ICE MAKER TO ADJACENT FLOOR SINK. CONSULT ICE MACHINE INSTRUCTION MANUAL FOR INDIRECT PIPING REQUIREMENTS.
 - EXTEND FULL DISCHARGE OF RP BACKFLOW PREVENTER TO EXTERIOR WALL AND SPILL TO GRADE ON A SPLASHBLOCK. SLEEVE PIPE WATERTIGHT THRU WALL.
 - LOCATE FLOOR SINK APPROXIMATELY 6" FROM BACK WALL.
 - PROVIDE REFRIGERANT PIPING TO OUTDOOR CONDENSING UNIT ON ROOF.
 - CONNECT 1" CONDENSATE DRAIN LINE TO EVAPORATOR WITH P-TRAP.
 - PROVIDE HEAT TRACE FOR CONDENSATE DRAIN PIPING IN WALK-IN FREEZER. REFER TO ELECTRICAL DRAWINGS FOR HEAT TRACE DETAILS.
 - DISCHARGE CONDENSATE DRAIN PIPING INTO OPEN SITE DRAIN.
 - PROVIDE PROSET TRAP GUARD TO OPEN SITE DRAIN.

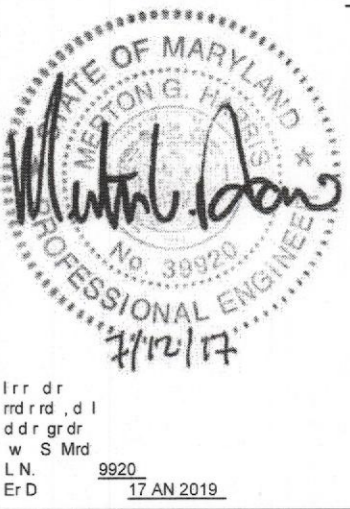


1 PLUMBING - SANITARY NEW WORK PLAN
S 1/4" = 1'-0"



12M
811 Cromwell Park Drive, Suite 113
Cromwell Business Park at BWI
Clen Burne, Maryland 21084
12Mill2M.com
Phone 410.863.1302
Fax 410.863.1308

BR
ENGINEERING SERVICES
502 MC Dr
S M
G Bldg. Mtg 21081
P 410.761.9600
F 410.761.9600
www.br.com



DASH IN
STORE #079
QUARTERFIELD RD - SEVERN, MD

REV. #	ISSUE / DESCRIPTION	DATE
1	OWNER COMMENTS	05/10/17
2	OWNER COMMENTS	07/07/17

SHEET TITLE:
PLUMBING - SANITARY NEW WORK PLAN

DRAWING DATE: 01 APRIL 2017
DRAWN BY: MVM
REVIEWED BY: MGH
PROJECT #: 2889
SHEET #

P-101
FILE NAME:
2889 - P-101.dwg