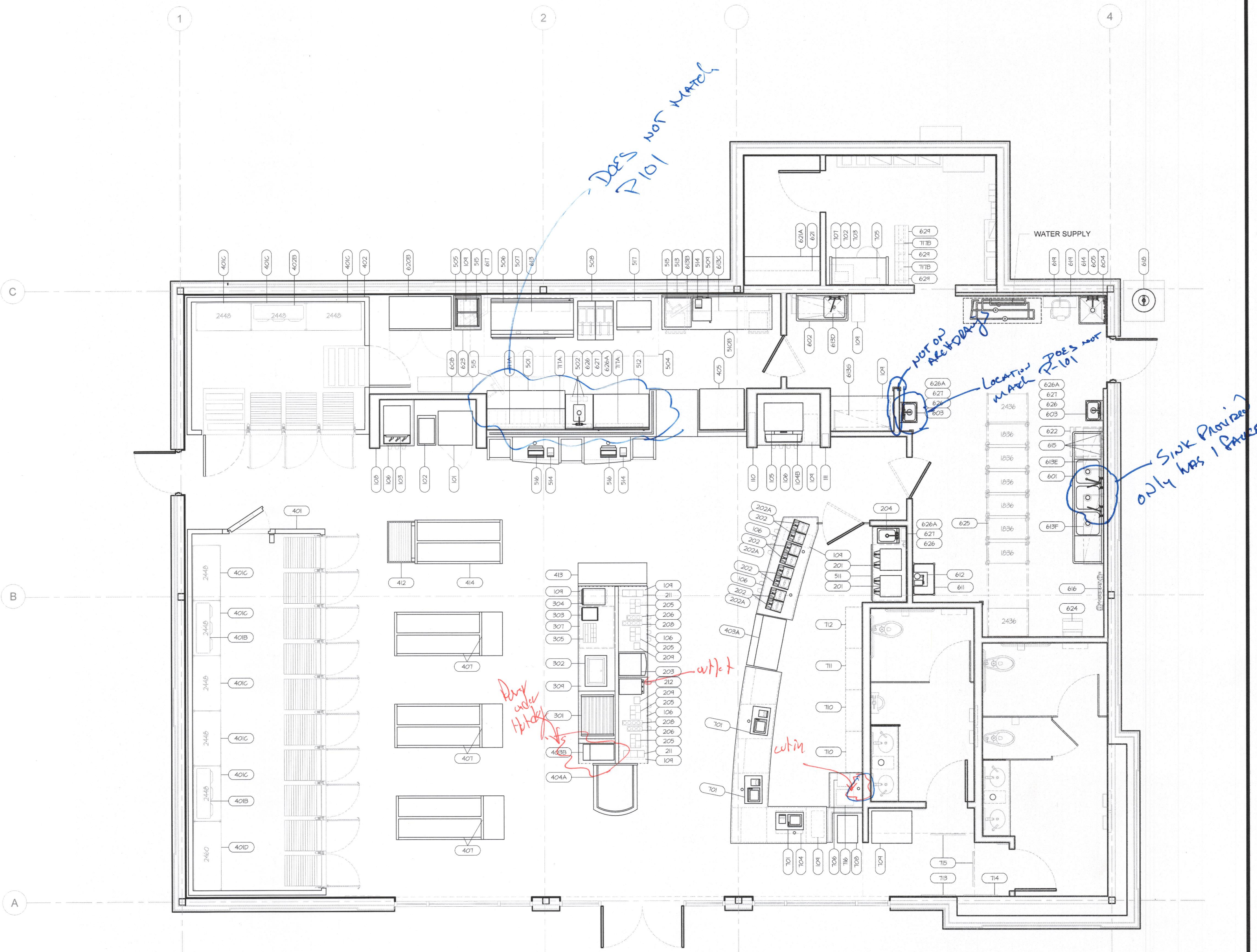
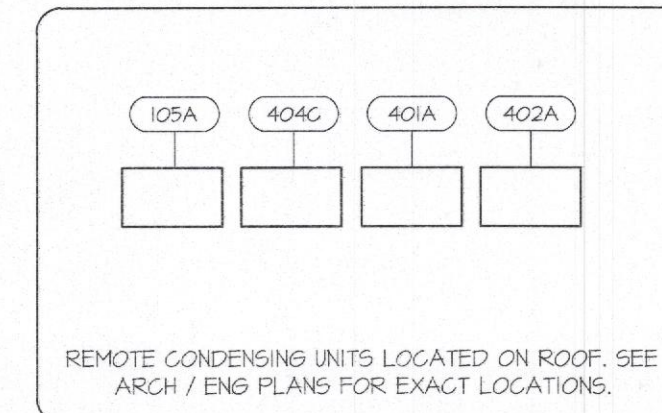


EQUIPMENT SCHEDULE

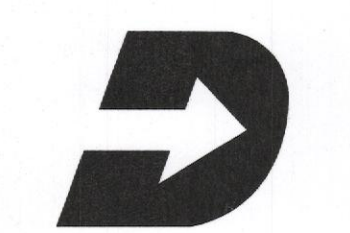
ITEM	QTY.	DESCRIPTION	ITEM	QTY.	DESCRIPTION
101	1	FREAL REFRIGERATED CASE	601	1	3 COMPARTMENT SINK (115")
102	1	FREAL BLENDER ON SIDE COUNTER	602	1	FOOD PREP SINK (45")
103	1	FROZEN BEVERAGE DISPENSER (ICEE)	603	2	HAND SINK, WALL MOUNTED
104A	-	SODA DISPENSER	604	1	MOP SINK (SINK)
104B	1	TOUCHPOINT BEVERAGE DISPENSER	605	1	MOP HANGER
105	1	ICE MAKER	606	-	48"x24" STAINLESS STEEL SHELVING
105A	1	ICE MAKER - REMOTE CONDENSER	607	-	48"x18" STAINLESS STEEL SHELVING
106	6	BUILT-IN CUP DISPENSER	608	1	48"x12" STAINLESS STEEL SHELVING
107	-	LID HOLDER	609	-	36"x24" STAINLESS STEEL SHELVING
108	1	DOME LID HOLDER WITH STRAWS	610	-	36"x18" STAINLESS STEEL SHELVING
109	4	TRASH CAN	611	1	BAS-N-BOX
110	1	BUILT-IN LID ORGANIZER	612	1	CARBONATOR
111	4	BUILT-IN STRAW HOLDER	613	1	WALL SHELF - WALL MTD - 1 TIER
112	-	NOT USED	613B	1	WALL MOUNTED SHELF SYSTEM
201	2	COFFEE BREWER	613C	1	WALL MOUNTED SHELF SYSTEM
202	4	COFFEE WARMER - STAND	613D	1	WALL MOUNTED- SHELVING SYSTEM
202A	10	COFFEE SATELLITES	613E	1	WALL MOUNTED- SHELVING SYSTEM
203	1	LATTE (CAPUCINO)	613F	1	WALL MOUNTED- SHELVING SYSTEM
204	1	HAND SINK	613G	1	WALL MOUNTED- SHELVING SYSTEM
205	4	COFFEE CONDIMENTS	614	1	MOP SINK CHEMICAL DISPENSER
206	2	CREAMER	615	1	3 COMPARTMENT SINK CHEMICAL DISPENSER
207	-	NOT USED	616	1	WATER FILTER
208	2	FLAVOR SHOTS	617	1	FIRE SUPPRESSION / UTILITY CABINET
209	2	HOT TEA BAG HOLDER	618	1	BULK CO2
210	-	NOT USED	619	2	TANKLESS HOT WATER HEATER
211	2	COFFEE ACCESSORIES	620A	-	REACH-IN FREEZER
212	1	THE CREAM MACHINE	620B	1	REACH-IN FREEZER
213	-	NOT USED	621	2	WALL CABINETS
214	-	NOT USED	621A	1	OFFICE DESK
301	1	ROLLER GRILL	622	1	DISHWASHER, UNDERCOUNTER
302	1	DROP-IN GOLD PAN	623	1	TABLE WORK
303	1	NACHO RACK	624	1	PRESSURE WASHER W/ SCRUBBER SYSTEM
304	1	CHEESE DISPENSER	625	1	SLIDING TRACK STORAGE SYSTEM
305	1	CONDIMENTS & UTENSILS	626	4	LIQUID SOAP DISPENSER
306	-	NOT USED	626A	4	SOAP REFILL
307	1	UNDER CABINET REFRIGERATOR	627	4	HAND TOWEL CENTERFEED PRO DISPENSER
308	-	NOT USED	628	-	NOT USED
309	1	SNEEZE GUARD	629	6	LOCKERS
401	1	WALK-IN COOLER	701	3	POINT OF SALE
401A	1	CONDENSING UNIT- COOLER	702	1	SATELLITE CONTROL
401B	2	EVAPORATOR COIL- COOLER	703	1	EPOS-2 CONTROL
401C	8	48"x24" WIRE SHELVING	704	1	UNDER COUNTER VAULT
401D	1	60"x24" WIRE SHELVING	705	1	POWER BACKUP SYSTEM
402	1	WALK-IN FREEZER	706	1	MONEY ORDER PRINTER
402A	1	CONDENSING UNIT- FREEZER	707	1	SERVER RACK
402B	1	EVAPORATOR COIL - FREEZER	708	1	ATM
403A	1	BAKERY CASE	709	1	MARYLAND LOTTERY TERMINAL A
403B	1	BAKERY CASE	710	2	TOBACCO DISPLAY
404A	1	REFRIGERATED MERCHANDISER	711	1	HBA DISPLAY
404B	-	NOT USED	712	1	OTP DISPLAY
404C	1	REFRIG. MERCHANDISER - REMOTE- CONDENSER - ON ROOF	713	1	COMMUNITY DISPLAY BOARD
405	1	HOT FOOD MERCHANDISER	714	1	LICENSE BOARD
406	-	36" GONDOLA SHELVING W/ 18" END CAPS	715	2	LOTTERY MONITOR (ABOVE)
407	3	72" GONDOLA SHELVING W/ 18" END CAPS	716	1	MARYLAND LOTTERY TERMINAL B
408	-	108" GONDOLA SHELVING W/ 18" END CAPS	717A	3	MONITORS (AD FLOW) - LANDSCAPE POSITION
409	-	IN-QUEI MERCHANDISER	717B	2	MONITORS (AD FLOW) - PORTRAIT POSITION
410	-	36" SINGLE SIDED SHELVING			
411	-	48" SINGLE SIDED SHELVING			
412	1	36" SINGLE SIDED SHELVING			
413	1	60" SINGLE SIDED SHELVING			
414	1	12" GONDOLA SHELVING			
501	1	SANDWICH PREP TABLE			
502	1	HAND SINK			
503	-	NOT USED			
504	1	EXHAUST HOOD			
505	1	SPEED RACK			
506	1	GAS GRIDDLE 6'-0"			
507	1	REFRIGERATOR GRIDDLE STAND			
508	1	GAS FRYER - (BATTERY)			
509	1	MICROWAVE			
510	-	ENCLOSED BASE, WORK TABLE WITH DRAWERS			
510B	1	ENCLOSED BASE, WORK TABLE WITH DRAWERS			
511	1	REFRIGERATOR, UNDERCOUNTER			
512	1	WORKTOP FREEZER			
513	1	CONVECTION OVEN			
514	3	MADE TO ORDER PRINTER			
515	3	ORDER SYSTEM MONITOR			
516	2	ORDER SYSTEM KIOSK W/ PRINTER			
517	1	HALF-SIZE ELECTRIC CONVECTION OVEN			

EQUIPMENT SCHEDULE LEGEND

ABBREV.	TITLE
G	GENERAL CONTRACTOR
E	EQUIPMENT SUPPLIER
M	MILLWORK FABRICATOR
O	OWNER PROVIDED
V	VENDOR PROVIDED
ETR	EXISTING
F	FRANCHISEE



M1 FOODSERVICE EQUIPMENT PLAN
1/4" = 1'-0"



REV.	ISSUE / DESCRIPTION	DATE

**FOODSERVICE
EQUIPMENT
PLAN AND
SCHEDULE**

DATE	01 APRIL 2017
DRAWN BY	L2M
CHECKED BY	SOC
PROJECT #	15.108
SHEET #	

FS 1