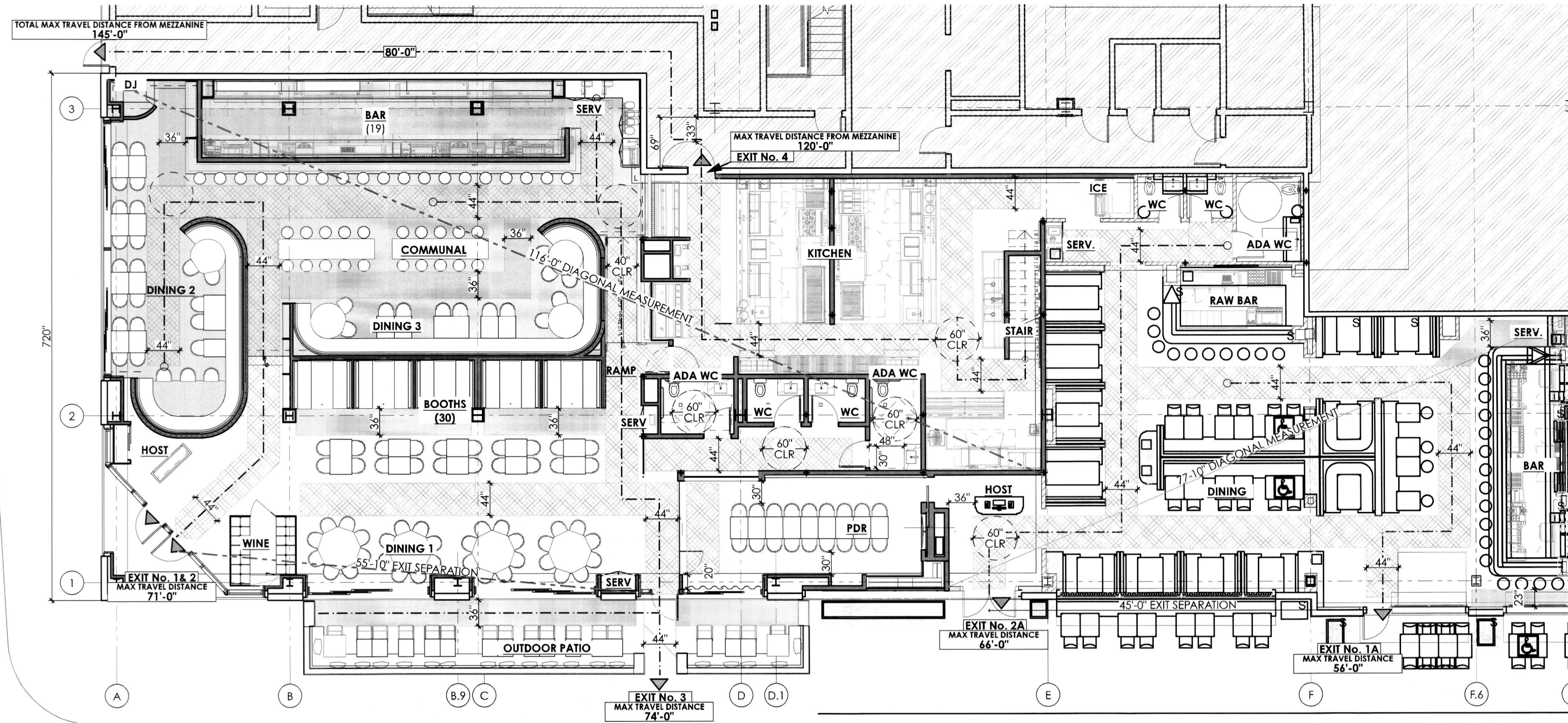


18076069
REVIEWED FOR COMPLIANCE

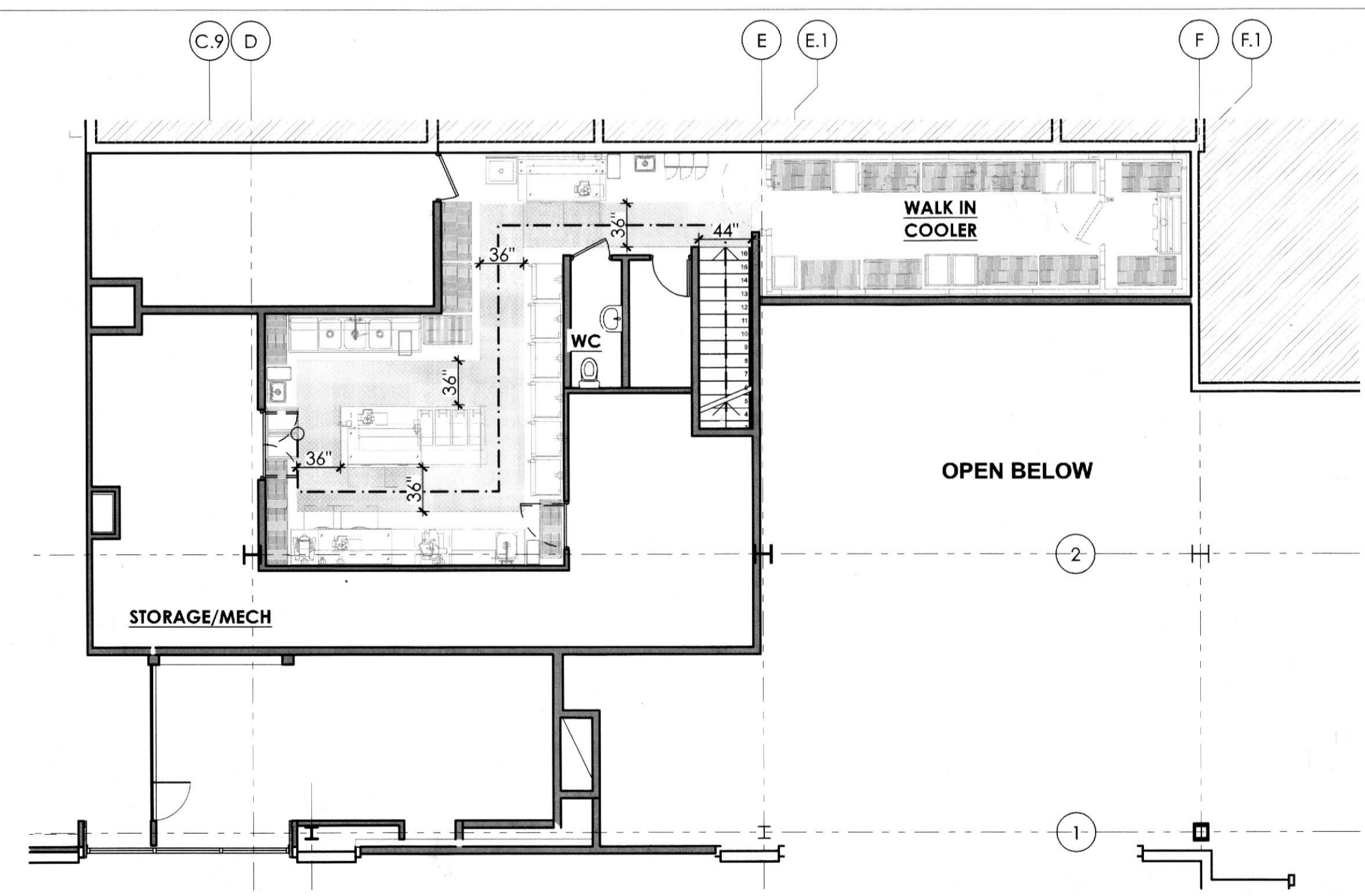
Performance of this review does not relieve the applicant from full responsibility to comply with all applicable codes, ordinances and regulations 10/29/18

EGRESS PLAN LEGEND

- NOT IN CONTRACT
- EGRESS OATH DISTANCE
- SPACE DIAGONAL MEASUREMENT
- EXIT SEPARATION
- 1 HOUR RATING
- 2 HOUR RATING
- 3 HOUR RATING
- 4 HOUR RATING
- 44" WIDE EGRESS
- 36" WIDE EGRESS
- EXIT DISCHARGE
- MATCH LINE SEE XX/X-XXX
- MATCH LINE



1 GROUND FLOOR EGRESS PLAN
Scale: 1/8" = 1'-0"



2 MEZZANINE EGRESS PLAN
Scale: 1/8" = 1'-0"

OUZO BAY OCCUPANCY COUNT

MAXIMUM CAPACITY 226 OUZO BAY GROUND FLOOR	MAXIMUM CAPACITY 48 OUZO BAY PATIO	MAXIMUM CAPACITY 7 OUZO BAY MEZZANINE
---	---	--

LOCH BAR OCCUPANCY COUNT

MAXIMUM CAPACITY 161 LOCH BAR	MAXIMUM CAPACITY 37 LOCH BAR PATIO
--	---

ARCHITECT
HapstakDemetriou +
ARCHITECTURE | DESIGN
2715 M STREET NW, 4th Floor
WASHINGTON, DC 20007
202.333.9038
www.hd-ad.com info@hd-ad.com

CLIENT
Alexander Smith
(410) 241-1224
afsmith11@gmail.com

STRUCTURAL ENGINEER
BEI Structural Engineers
3930 Pender Dr. Suite 175
Fairfax, VA 22030

MEP ENGINEER
J.B. Wyble and Associates, P.A.
7950 Norfolk Ave., Bethesda, MD
301-654-1410

FOOD SERVICE CONSULTANT
JLA Corp
13031 US Highway 19N, Clearwater, FL 33764
727-470-7862

OUZO BAY HOUSTON
4444 WESTHEIMER RD, HOUSTON, TX 77027, SUITE 130

LOCH BAR HOUSTON
4444 WESTHEIMER RD, HOUSTON, TX 77027, SUITE 110

PROJECT NO. 17054

I CERTIFY THAT THESE DOCUMENTS WERE PREPARED OR APPROVED BY ME, AND THAT I AM A DULY LICENSED ARCHITECT UNDER THE LAWS OF TEXAS LICENSE NO. 26750 EXPIRATION DATE: 8/31/2018

REV	DATE	ISSUED FOR	REV	DATE	ISSUED FOR
	5/16/18	PROGRESS SET			
	6/20/18	PERMIT SET			

EGRESS PL
A004
PRINTED: 6/21/18
© HapstakDemetriou+