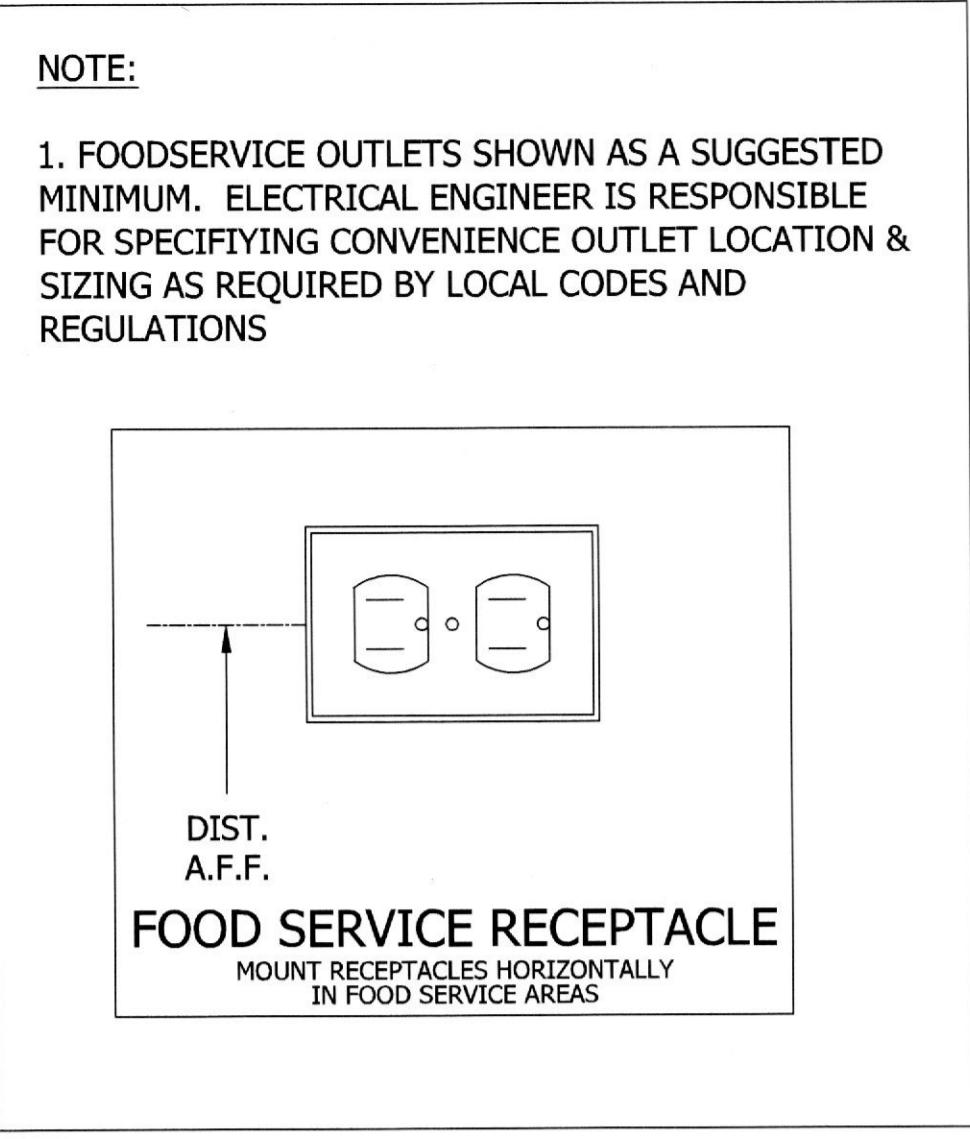


CURRENT RATING	TYPE	2 POLE - WIRE NO GROUND		2 POLE - 3 WIRE GROUNDING		1 POLE 4 WIRE GROUNDING
		125V	250V	125V	250V	125/250V
15A	STRAIGHT BLADE	1-15R	2-15R	5-15R	6-15R	
	TWIST LOCK	L1-15R		L5-15R	L6-15R	
20A	STRAIGHT BLADE		2-20R	5-20R	6-20R	14-20R
	TWIST LOCK		L2-20R	L5-20R	L6-20R	L14-20R
30A	STRAIGHT BLADE		2-30R	5-30R	6-30R	14-30R
	TWIST LOCK			L5-30R	L6-30R	L14-30R
50A	STRAIGHT BLADE			5-50R	6-50R	14-50R
	TWIST LOCK					CS6364/65
60A	STRAIGHT BLADE					14-60R

ELECTRICAL LEGEND			
SYMBOLS	ABBREVIATIONS		
Ⓝ	JUNCTION BOX (J-BOX)	A	AMPERES
□	EQUIPMENT INTERCONNECTION BY E.C.	V	VOLTS
●	ELECTRICAL ROUGH-IN	W	WATTS
Ⓢ	DUPLEX ELECTRICAL OUTLET (DCO)	PH	PHASE
Ⓡ	FLUORESCENT LIGHT FIXTURE	AFF	ABOVE FINISHED FLOOR
Ⓛ	BREAKER PANELBOARD	DN	DOWN FROM ABOVE
Ⓢ	SWITCH AS NOTED	HP	HORSE POWER
Ⓢ	FLOOR BOX (FL. BOX)	KW	KILOWATTS
Ⓢ	DATA LINE CONNECTION	K.E.C.	KITCHEN EQUIPMENT CONTRACTOR
		E.C.	ELECTRICAL CONTRACTOR
		CONV.	CONVENIENCE OUTLET 120V 1PH 20.0A



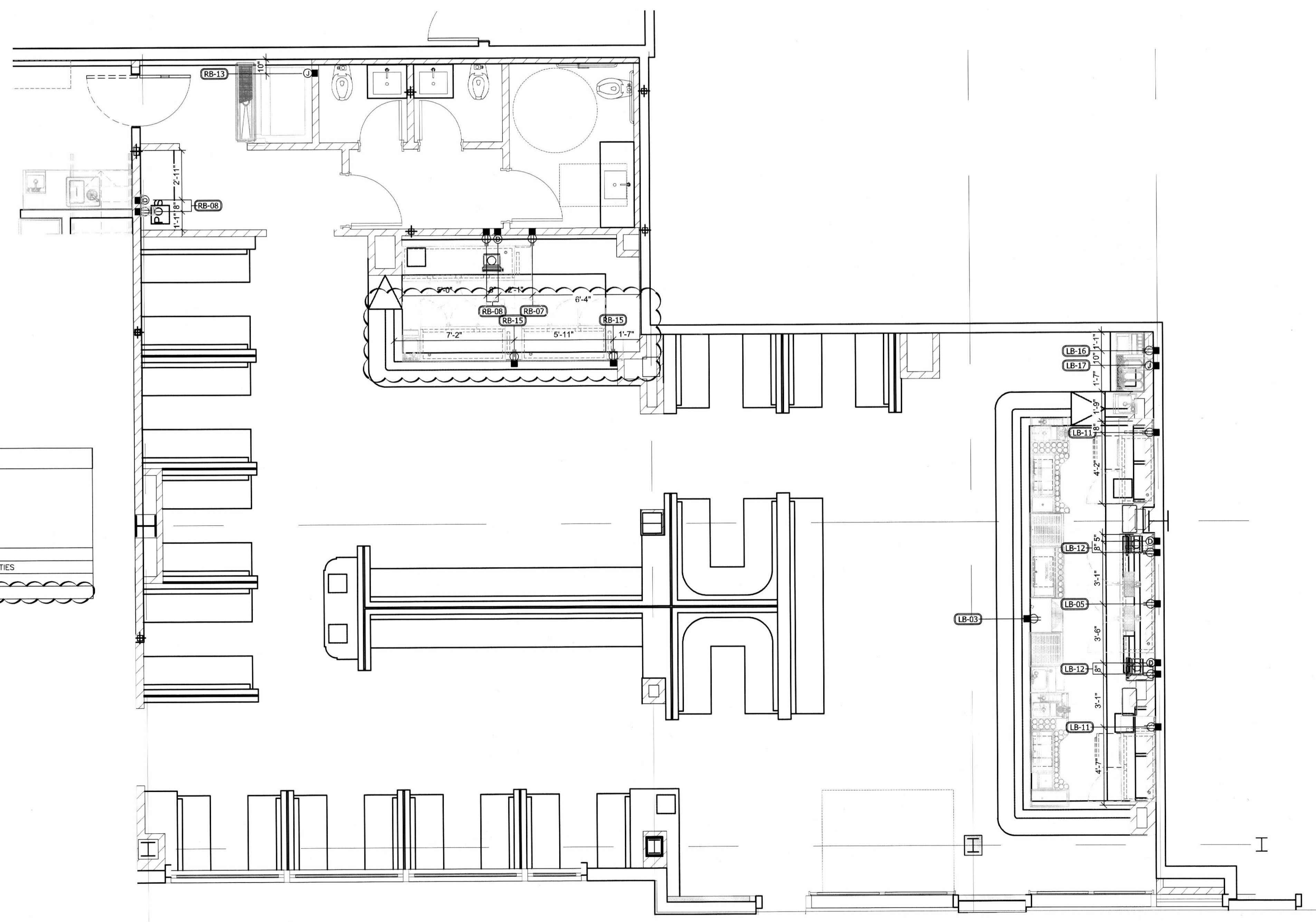
City of Houston Texas

18076069

REVIEWED FOR COMPLIANCE

Performance of this review does not relieve the applicant from full responsibility to comply with all applicable codes, ordinances and regulations 10/29/18

ELECTRICAL EQUIPMENT ROUGH-IN SCHEDULE												
ITEM NO	QTY	EQUIPMENT CATEGORY	PLUG DIRECT	VOLTS	PHASE	CYCLE	AMPS	KW	HP	NEMA	ELECTRICAL AFF. (IN)	ELEC REMARKS
RB-07	1	BACK BAR EQUIPMENT	X	120	1	60	6.3	1/3	5-15P	18		
RB-08	2	POS SYSTEM	X	120	1	60	5.0		5-15P	18		DEDICATED CIRCUIT AND CONDUIT FOR DATA. VERIFY UTILITIES
RB-13	1	ICE MAKER	X	208-230	1	60	15.4		5-15P	18		
RB-15	2	BACK BAR EQUIPMENT	X	120	1	60	6.3	1/3	5-15P	12		



1 LOCH BAR ELECTRICAL ROUGH-IN PLAN & SCHEDULE Scale: 1/4" = 1' 0"

JOHNSON-LANCASTER AND ASSOCIATES, INC.
FOOD SERVICE EQUIPMENT SPECIALIST
13031 US Highway 19 N Clearwater, FL 33764 (727) 796-5822

NUMBER	DATE	DESCRIPTION	PER HEALTH DEPARTMENT COMMENTS
1	10/19/18		
2	10/24/18		

OUZO RESTAURANT & LOCH BAR
HOUSTON, TEXAS

PROJECT TITLE:

DATE: 06/28/2018
SCALE: 1/4" = 1' 0"
DRAWN BY: JR
DESIGNED BY: JR
PAPER SIZE: 24x36
ELECTRICAL PLAN AND SCHED
SHEET: FS-3.1