
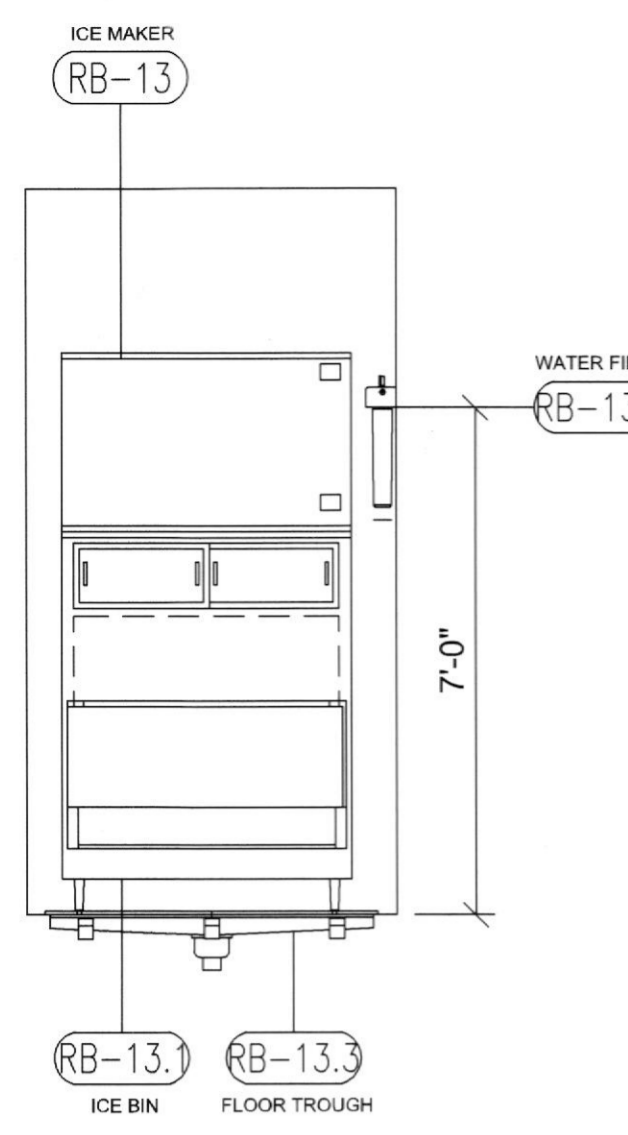
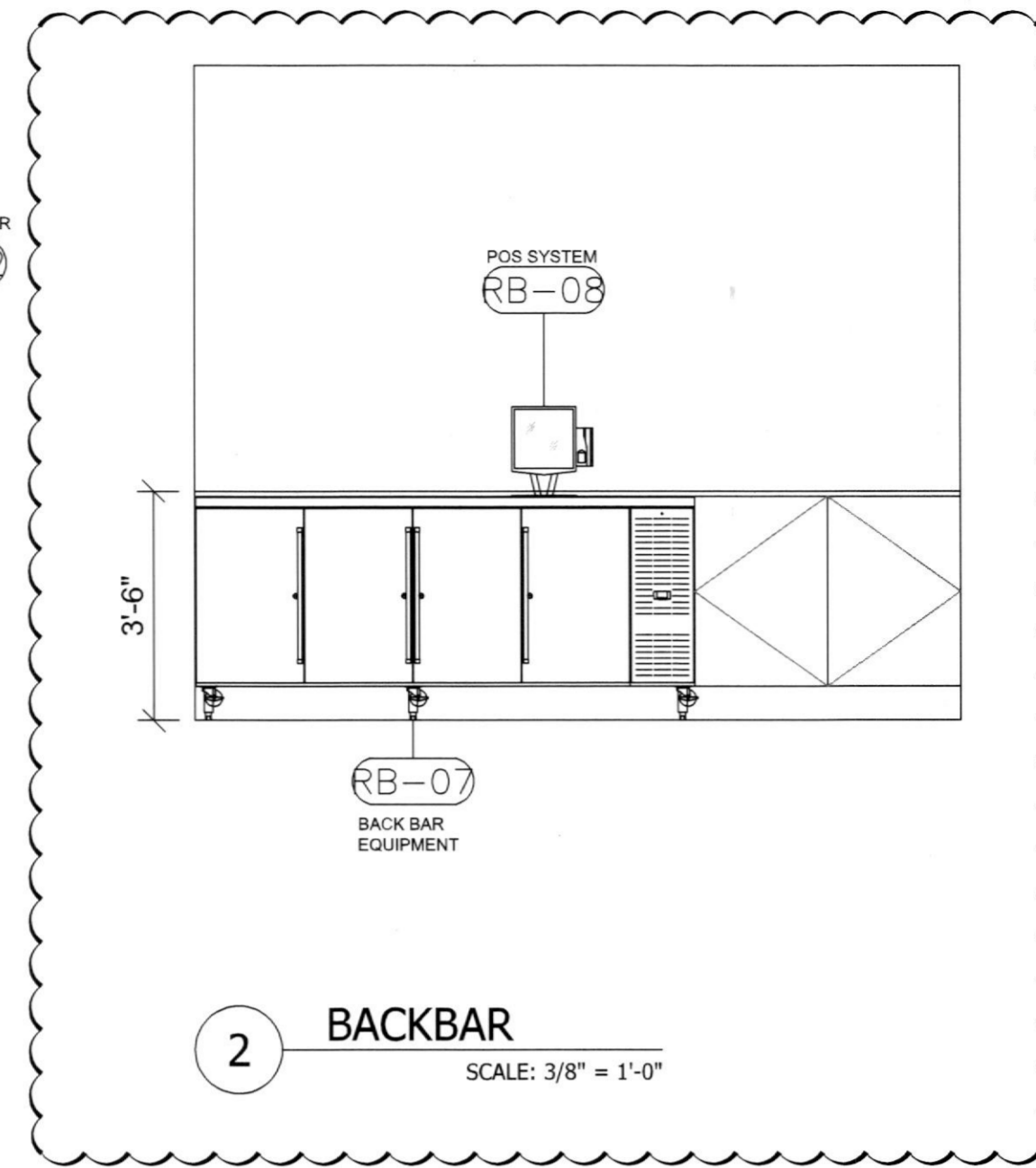


City of Houston Texas

 18076069
 REVIEWED FOR COMPLIANCE
 Performance of this review does not relieve the applicant from full responsibility to comply with all applicable codes, ordinances and regulations 10/29/18

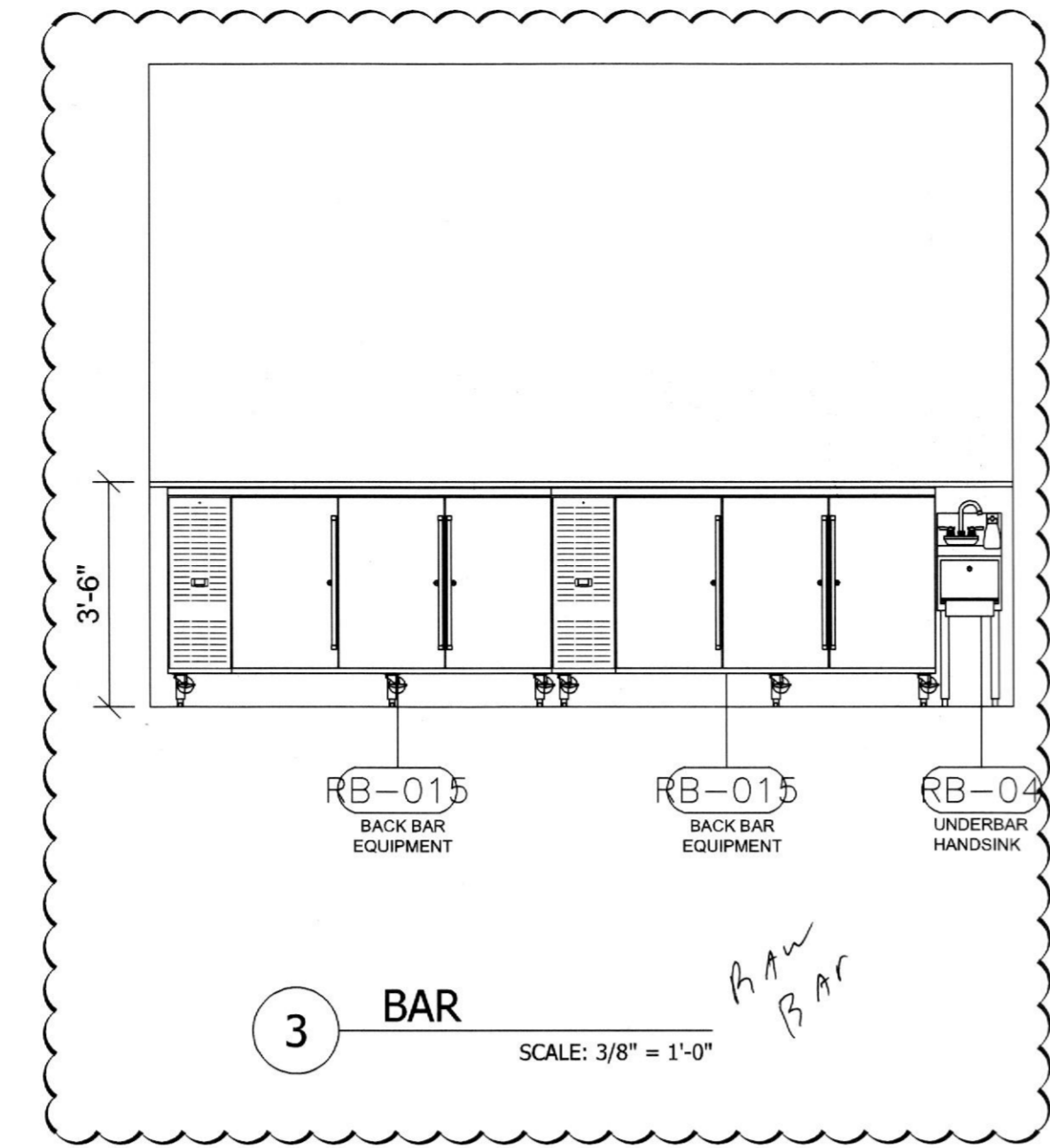
JOHNSON-LANCASTER AND ASSOCIATES, INC.
 FOOD SERVICE EQUIPMENT SPECIALIST
 13031 US Highway 19 N Clearwater, FL 33764 (727) 796-6822



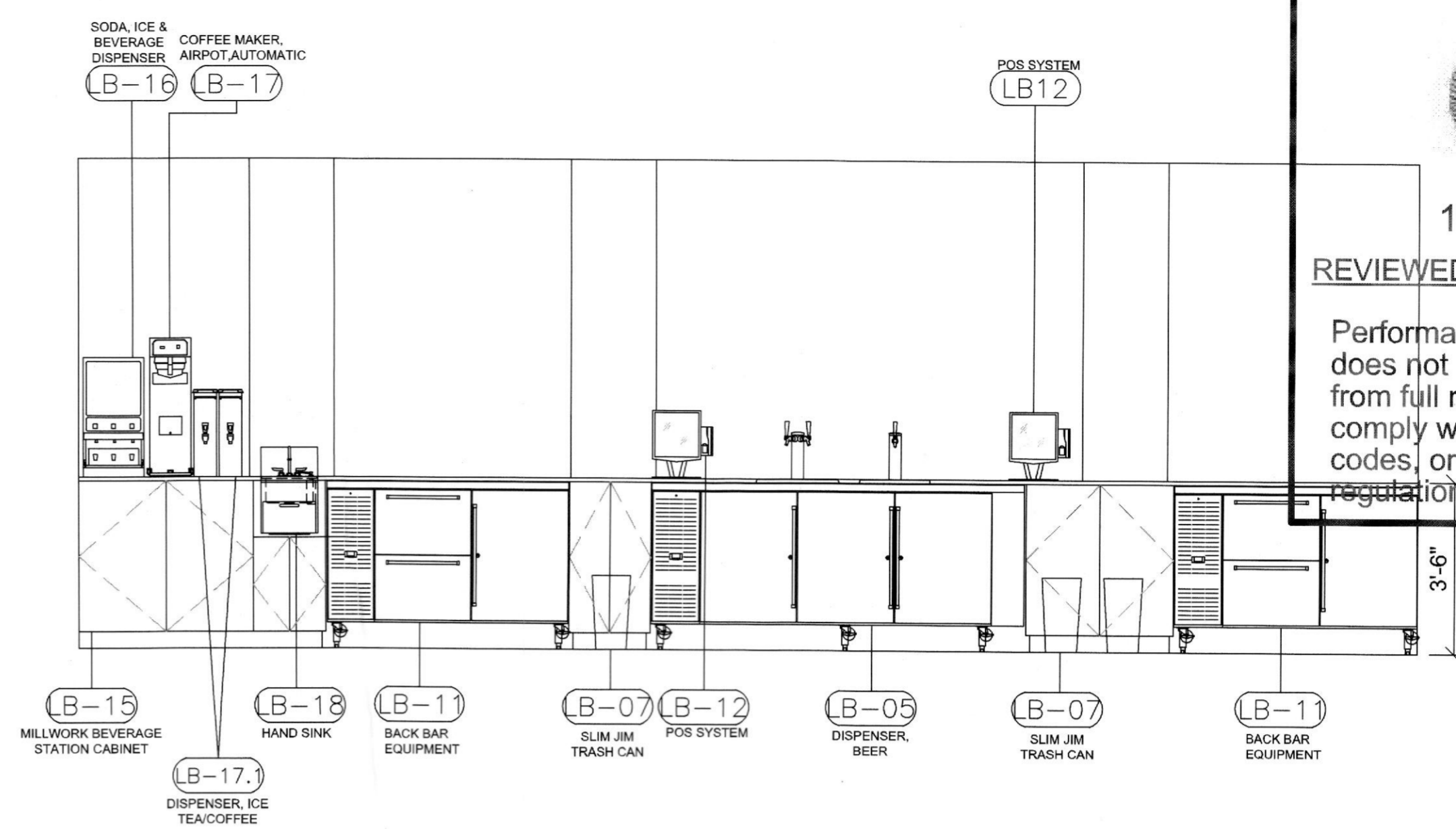
1 ICE PRODUCTION
 SCALE: 3/8" = 1'-0"



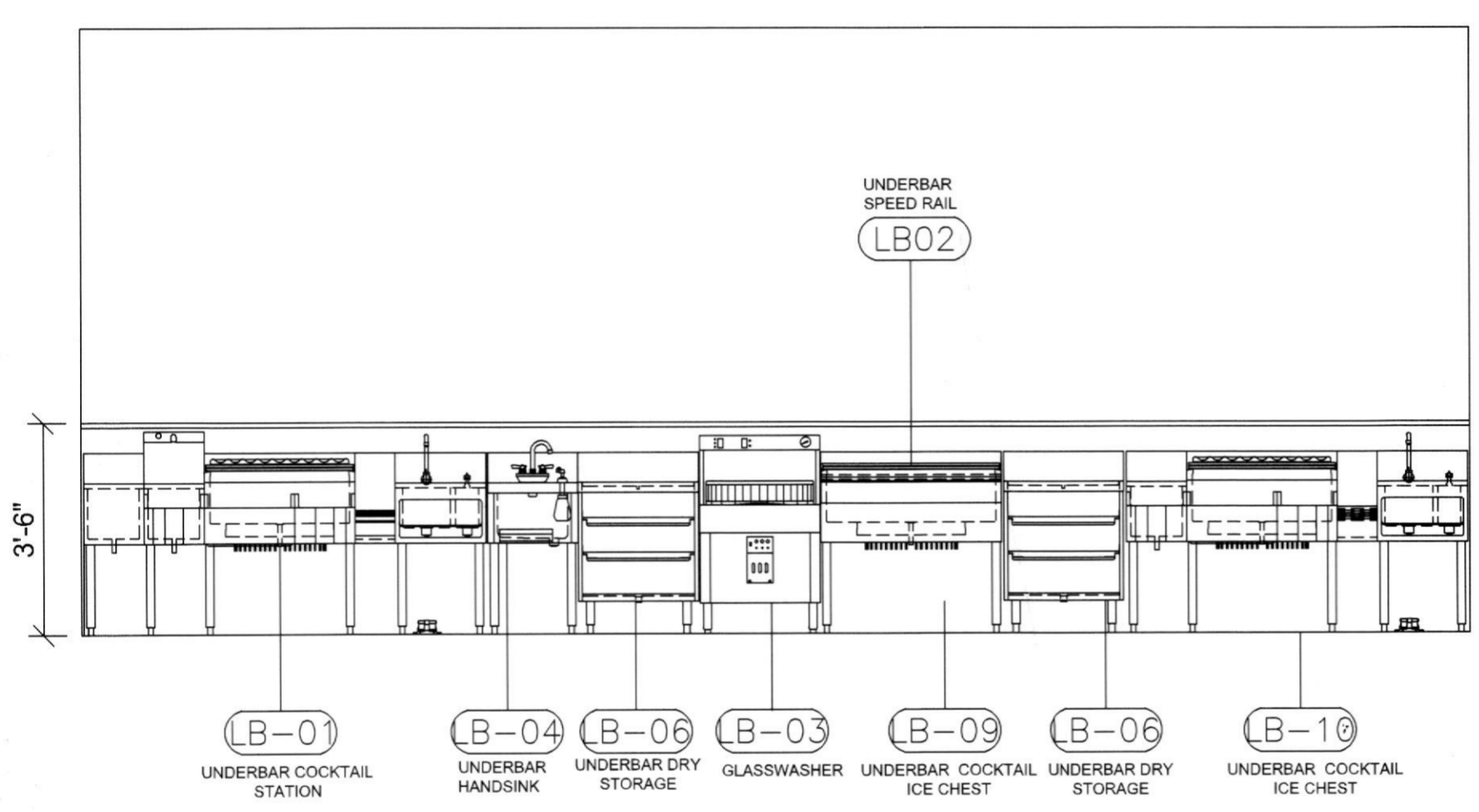
2 BACKBAR
 SCALE: 3/8" = 1'-0"



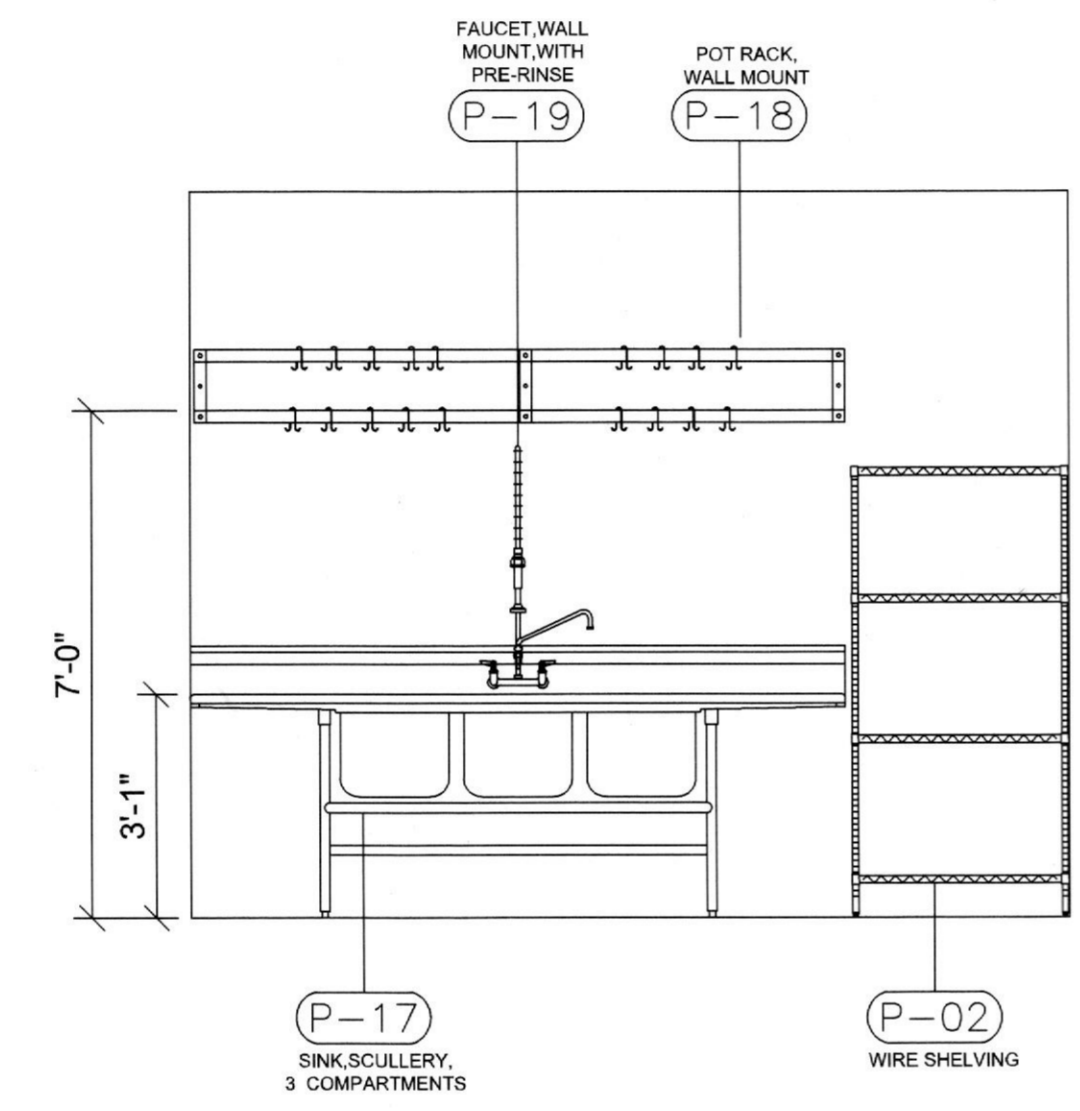
3 BAR
 SCALE: 3/8" = 1'-0"



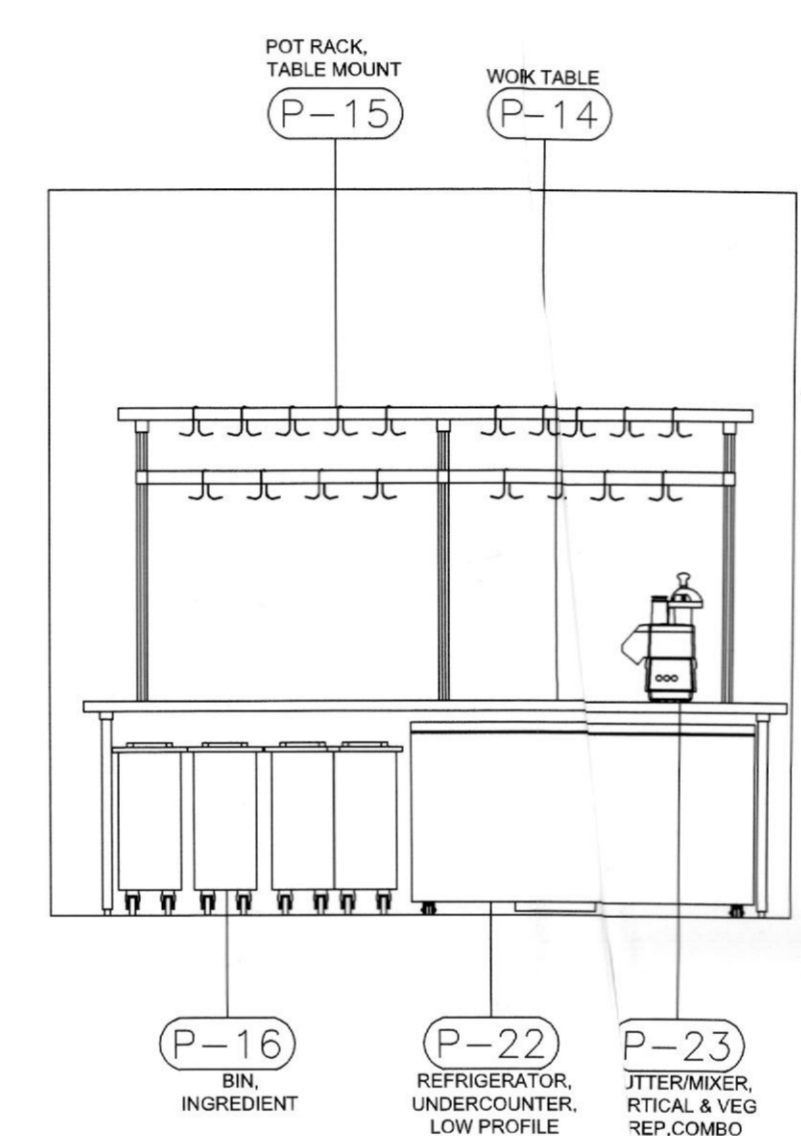
4 BACKBAR
 SCALE: 3/8" = 1'-0"



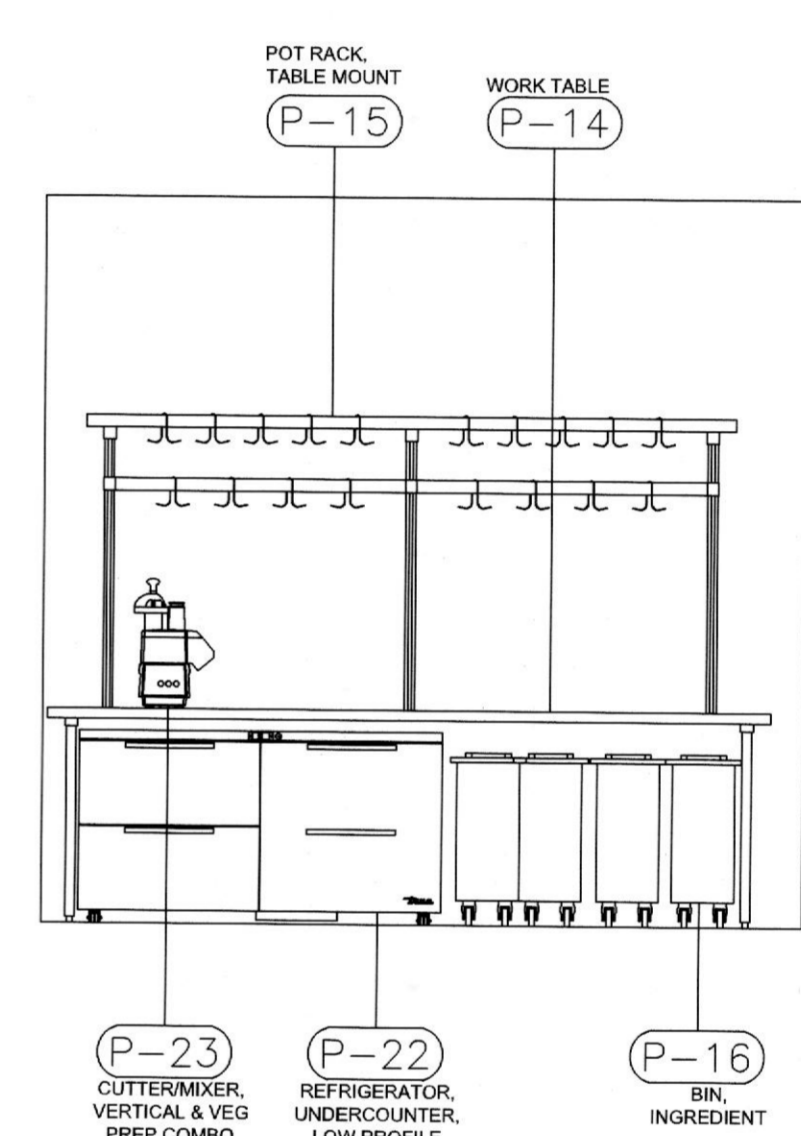
5 BAR
 SCALE: 3/8" = 1'-0"



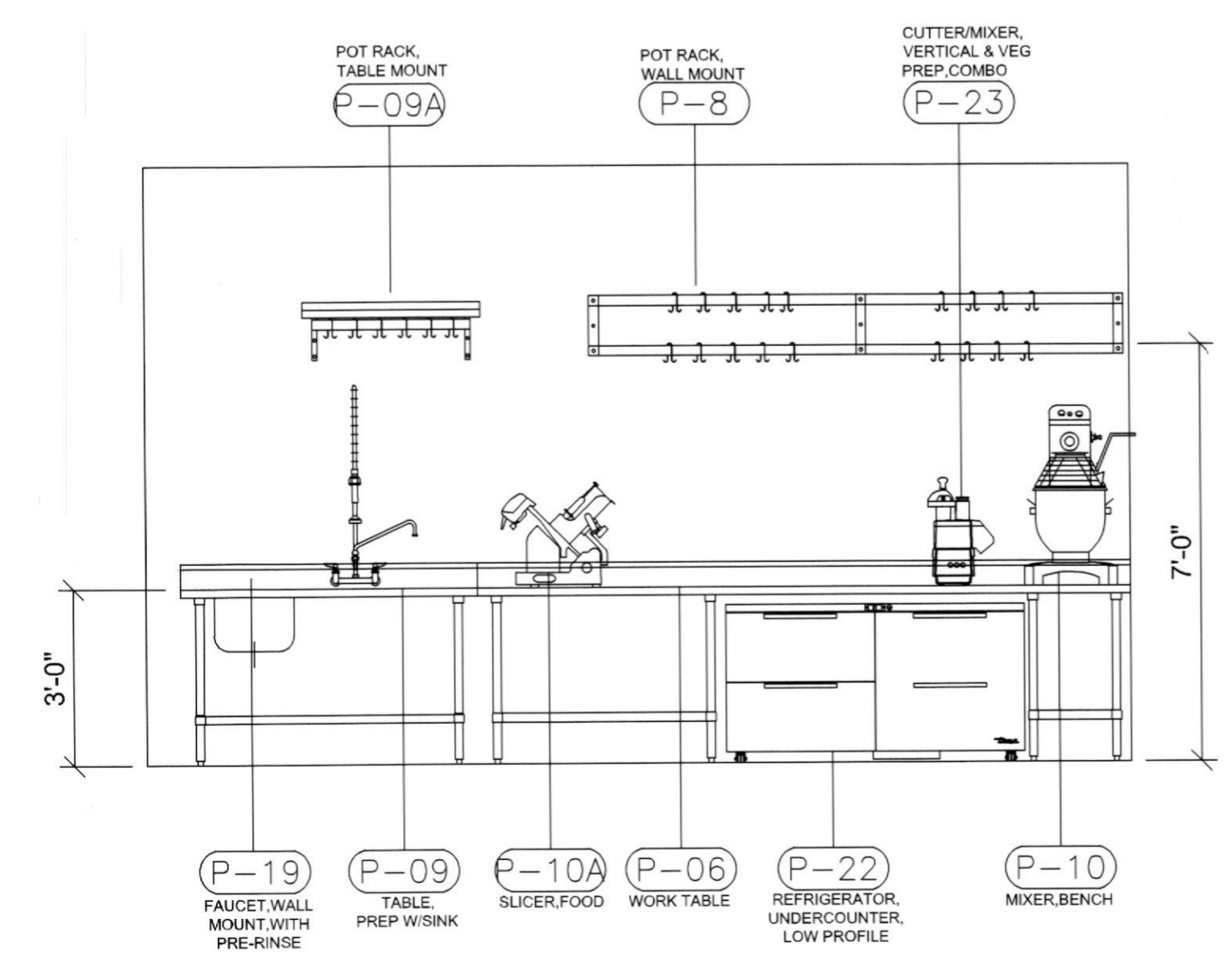
6 THREE COMPARTMENT SINK
 SCALE: 3/8" = 1'-0"



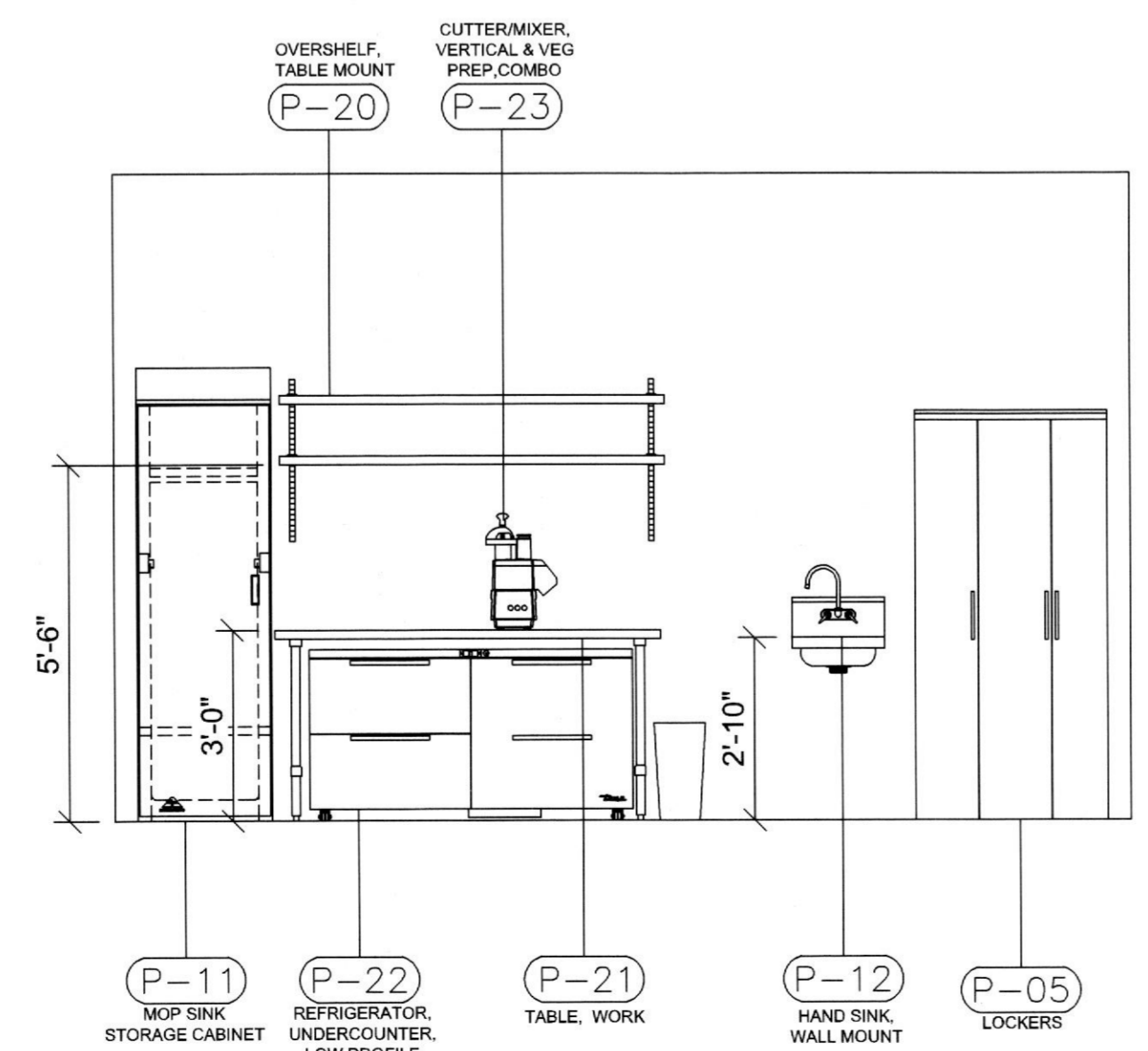
7 PREP/SUPPORT COUNTER
 SCALE: 3/8" = 1'-0"



8 PREP/SUPPORT COUNTER
 SCALE: 3/8" = 1'-0"



9 PREP TABLE
 SCALE: 3/8" = 1'-0"



10 MOP SINK/SUPPORT
 SCALE: 3/8" = 1'-0"

REVISIONS	NUMBER	DATE	DESCRIPTION
	1	10/19/18	PER HEALTH DEPARTMENT COMMENTS
	2	10/24/18	PER HEALTH DEPARTMENT COMMENTS

OUZO RESTAURANT & LOCH BAR
 HOUSTON, TEXAS

DATE:	06/28/2017
SCALE:	1/4" = 1'-0"
DRAWN BY:	JR
DESIGNED BY:	JR
PAPER SIZE:	24x36
ELEVATIONS	
SHEET:	FS-9.2