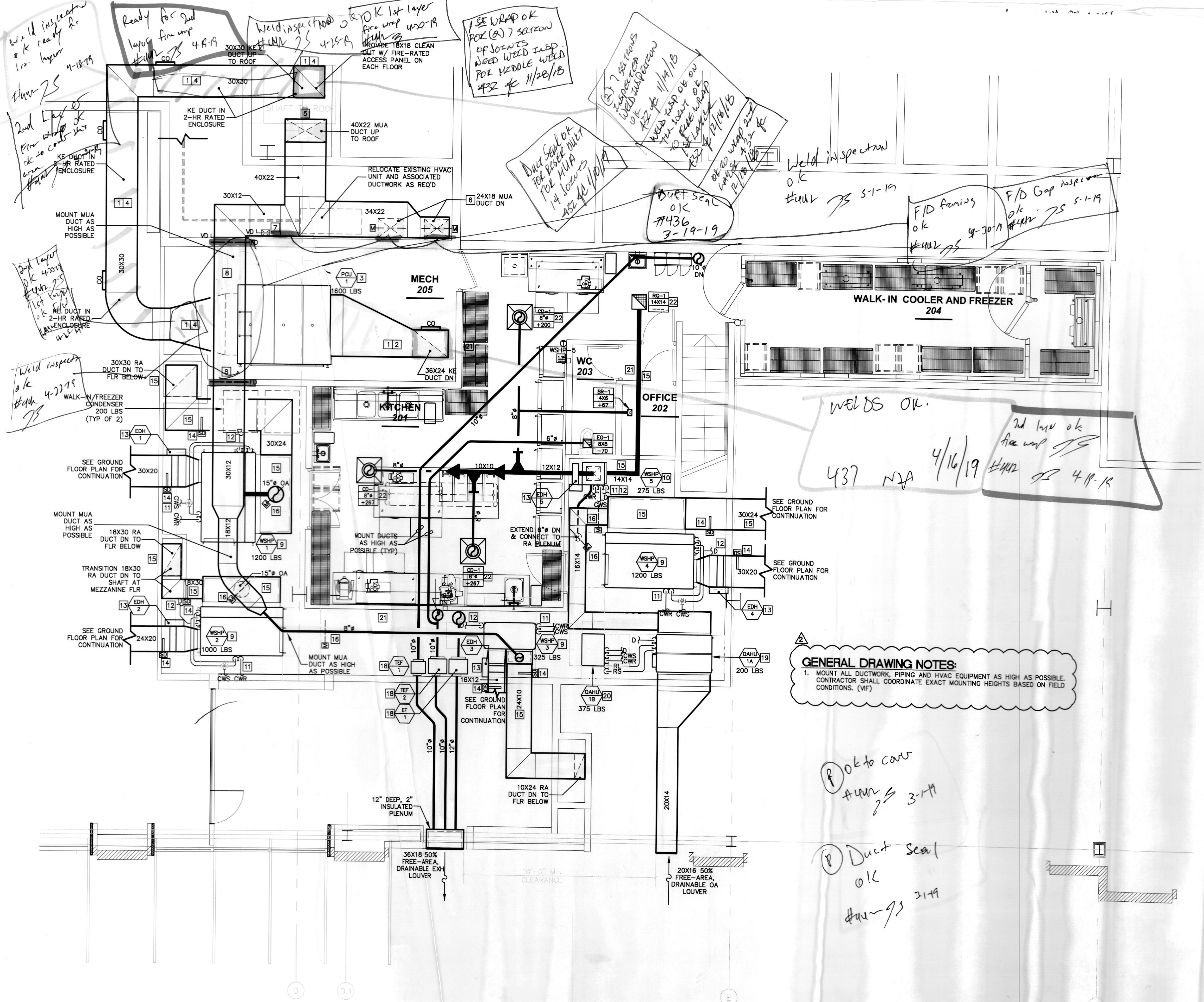




DRAWING REFER

- 1 DUCTWORK FOR KITCHEN RECTANGULAR BLACK STEEL DUCTWORK WITH 2-HR FIRE WRAP JOINTS AND SEAMS SHALL BE WELDED TO PREVENT LEAKAGE. SLOPE KITCHEN EXHAUST DUCT AT A MINIMUM 2.0 PERCENT SLOPE TOWARD KITCHEN HOOD. PRE-FABRICATED ROUND STAINLESS STEEL DUCT (ASTM A213 TYPE 304) IS AN ACCEPTABLE ALTERNATE.
- 2 NEW 36X24 KITCHEN EXHAUST DUCT UP FROM KITCHEN HOOD. EXTEND DUCT TO MECH 205. CONNECT TO EXISTING EXHAUST DUCT AS REQUIRED. NO CONNECT TO EXISTING KITCHEN EQUIPMENT. CAPTIVE AIR DRAWINGS FOR POLYMER FROM FULL RESPONSIBILITY TO CONTRACTOR.
- 3 REMOTE FIRE SUPPRESSION (RFS) CONTROL UNIT (TAG: RFS-1) SHALL BE MOUNTED IN MECH 205. COORDINATE WITH MECHANICAL ROOM. NECESSARY ACCESS FOR SERVICING AND CLEANING SHALL BE PROVIDED. CAPTIVE AIR DRAWINGS FOR POLYMER FROM FULL RESPONSIBILITY TO CONTRACTOR.
- 4 EXTEND NEW 10X10 KITCHEN EXHAUST DUCT FROM RFS CONTROL UNIT OVER TO AND UP EXISTING SHAFT TO THE TRANSITION EXHAUST DUCT AS REQUIRED TO CONNECT TO OUTLET. SEE KITCHEN EQUIPMENT-CAPTIVE AIR DRAWINGS FOR INFORMATION. DUCTWORK SHALL BE FIRE-WRAPPED THE LENGTH/ROUTE, UP TO THE ROOF.
- 5 NEW 40X22 MAKE-UP AIR DUCT UP TO THE ROOF IN EXISTING FIRE DAMPER W/ ACCESS PANEL AT SHAFT WALL HALLWAY.
- 6 NEW 24X18 MAKE-UP AIR DUCTS W/ MOTORIZED DAMPER AGAINST HALLWAY WALL TO HOODS. PROVIDE FIRE DAMPER ACCESS PANEL AT DEMISING WALL IN THE HALLWAY. IN THE DAMPERS WITH MAKE-UP AIR UNIT (MAU-1) OPERATION.
- 7 NEW 8X6 MAKE-UP AIR DUCTS W/ VOLUME DAMPER DN HALLWAY WALL TO HOODS. PROVIDE FIRE DAMPER W/ ACCESS PANEL AT DEMISING WALL IN THE HALLWAY. BALANCE VOLUME DUCT TOTAL OA AIRFLOW FOR ASSOCIATED WSPH UNITS.
- 8 NEW 30X12 MAKE-UP AIR DUCT IN TO MEZZANINE LEVEL. HIGH AS POSSIBLE. PROVIDE FIRE DAMPER W/ ACCESS PANEL AT DEMISING WALL. ENCLOSURE IN 2-HR FIRE ENCLOSURE WITHIN THE MECHANICAL/POU RM.
- 9 NEW CEILING-HUNG, WATER SOURCE HEAT PUMP UNIT. LOCATE UNIT WITH VIBRATION ISOLATORS AS HIGH AS POSSIBLE. ADDITIONALLY, LOCATE UNIT TO PROVIDE THE NECESSARY FOR SERVICING. COORDINATE EXACT LOCATION IN THE FIELD.
- 10 NEW FLOOR-MOUNTED, VERTICAL WATER SOURCE HEAT PUMP UNIT & MOUNT UNIT ON VIBRATION ISOLATORS/PADS. ADDITIONALLY, LOCATE UNIT TO PROVIDE THE NECESSARY FOR SERVICING. COORDINATE EXACT LOCATION IN THE FIELD.
- 11 RUN NEW CWS/R PIPING (SIZED PER MFG'S SPECS) FROM MECH 205 TO EXISTING CWS/R BRANCH PIPES (VF). RUN PIPE HIGH AS POSSIBLE. EXACT ROUTING OF PIPING SHALL BE COORDINATED IN THE FIELD BY THE CONTRACTOR.
- 12 EXTEND CONCEALED NEW 1" TRAPPED & INSULATED, COPPER CONDENSATE DRAIN LINE FROM WSPH UNIT AND SPILL IN TO FLOOR DRAIN OR FLOOR SINK (VF), IF FEASIBLE. PROVIDE CONDENSATE PUMP (IF REQUIRED); "LITTLE GIANT" VCMA-15 FLOAT SWITCH 115V-1PH. SEE MECHANICAL DRAWING M204 MECHANICAL CONDENSATE PARTIAL PLANS FOR ADDITIONAL INFORMATION.
- 13 NEW SLIP-IN, ELECTRIC DUCT HEATER, INTERLOCK UNIT OPERATE WITH ASSOCIATED WSPH OPERATION.
- 14 FIELD-INSTALLED, DUCT-MOUNTED SMOKE DETECTOR. UNIT TIE-IN TO AND BE COMPATIBLE WITH EXISTING BASE BUILDING ALARM SYSTEM AS REQUIRED.
- 15 RETURN DUCTWORK WITH 1" SOUND LINING, UP TO THE FIRST FLOOR.
- 16 EXTEND NEW OUTSIDE AIR/MAKE-UP AIR DUCT AND CONNECT ASSOCIATED WSPH UNIT RA PLENUM W/ MOTORIZED DAMPER INTERLOCK DAMPER W/ MAKE-UP AIR UNIT (MAU-1) OPERATION.
- 17 HARD-WIRED 7-DAY PROGRAMMABLE THERMOSTAT MOUNTED ON WALL. EXACT LOCATION SHALL BE COORDINATED IN THE FIELD. (VF)
- 18 NEW CEILING-HUNG, IN-LINE EXHAUST FAN MOUNTED AS HIGH AS POSSIBLE. EXTEND AND CONNECT EXHAUST DUCT TO NEW EXHAUST LOUVER IN EXISTING STOREFRONT. TRANSITION EXHAUST DUCT REQUIRED.
- 19 NEW CEILING-HUNG, WATER-COOLED VRF 100% OUTSIDE AIR UNIT W/ FULL-SIZE, 1" SOUND-LINED INTAKE PLENUM AND 2" RACK. PROVIDE AUXILIARY DRAIN PAN UNDERNEATH THE ENTIRE UNIT. EXTEND NEW REFRIGERANT PIPING TO THE UNIT. PUMP (TAG: OAHU-1B). INTERLOCK UNIT WITH ASSOCIATED WSPH OPERATION.
- 20 EXTEND NEW CONDENSER WATER & REFRIGERANT PIPING TO THE WATER-COOLED HEAT PUMP MODULE. NEW REFRIGERANT PIPING TO BE SIZED PER THE MANUFACTURER'S RECOMMENDATIONS. AND INSULATE PIPING AS REQUIRED BY MANUFACTURER AND APPLICABLE BUILDING CODES. EXACT ROUTING OF REFRIGERANT PIPING SHALL BE COORDINATED IN THE FIELD. (VF)
- 21 INSTALL DRIP PANS UNDERNEATH ALL EQUIPMENT, DUCTWORK PIPING LOCATED ABOVE ELECTRICAL PANELS AS REQUIRED PER MECHANICAL ROOM.
- 22 NEW AIR DISTRIBUTION DEVICE (SUPPLY, RETURN, EXHAUST), REFER TO ARCHITECTURAL REFLECTED CEILING PLAN FOR EXACT LOCATION.



GENERAL DRAWING NOTES:

1. MOUNT ALL DUCTWORK, PIPING AND HVAC EQUIPMENT AS HIGH AS POSSIBLE. CONTRACTOR SHALL COORDINATE EXACT MOUNTING HEIGHTS BASED ON FIELD CONDITIONS. (VF)

1 M202 MEZZANINE LEVEL - MECHANICAL PLAN
SCALE: 1/4" = 1'-0"

ARCHITECT
HapstakDemetriou +
ARCHITECTURE | DESIGN
2715 M STREET NW, 4th Floor
WASHINGTON, DC 20007
202.333.9038
www.hd-ad.com info@hd-ad.com

CLIENT
Alexanader Smith
(410) 241-1224
afsmith11@gmail.com

STRUCTURAL ENGINEER
BEI Structural Engineers
3930 Pender Dr. Suite 175
Fairfax, VA 22030

MEP ENGINEER
J.B. Wyble and Associates, P.A.
7950 Norfolk Ave., Bethesda, MD
301-654-1410

FOOD SERVICE CONSULTANT
JLA Corp
13031 US Highway 19N, Clearwater, FL 33764
727-470-7862

**OUZO BAY/ LOCH BAR
HOUSTON**
4444 WESTHEIMER RD, HOUSTON, TX 77027

PROJECT NO. JBW17108

I CERTIFY THAT THESE DOCUMENTS WERE PREPARED OR APPROVED BY ME, AND THAT I AM A DULY LICENSED PROFESSIONAL ENGINEER UNDER THE LAWS OF THE STATE OF TEXAS.
PE LICENSE #: 129510, EXPIRATION DATE: DECEMBER 31, 2018
FIRM LICENSE #: F19615, EXPIRATION DATE: MARCH 31, 2019

REV	DATE	ISSUED FOR	REV	DATE	ISSUED FOR
	05/16/2018	PROGRESS SET			
	06/11/2018	PERMIT SET			
▲	08/30/2018	PERMIT COMMENTS			
▲	10/04/2018	PERMIT COMMENTS			