



18076069

**ARCHITECT**

HapstakDemetriou +  
 2715 M Street, NW Suite 4  
 Washington, DC 20007  
 202.333.9038  
 www.hd-ad.com  
 info@hd-ad.com  
 ARCHITECTURE | DESIGN

**INTERIOR DESIGNER**

Patrick Sutton  
 1000 Light St.  
 Baltimore, MD 21230  
 410-783-1500

**CLIENT**

Alexander Smith  
 (410) 241-1224  
 aasmith11@gmail.com

**STRUCTURAL ENGINEER**

BEI Structural Engineers  
 3930 Pender Dr. Suite 175  
 Fairfax, VA 22030

**MEP ENGINEER**

J.B. Wyble and Associates, P.A.  
 7950 Norfolk Ave., Bethesda, MD  
 301-654-1410

**FOOD SERVICE CONSULTANT**

JLA Corp  
 13031 US Highway  
 19N, Clearwater, FL 33764  
 727-470-7862

**RCP KEY NOTES** REVIEWED FOR COMPLIANCE

- NEW OWNER SUPPLIED FIXTURE TO BE CENTERED OVER HOST DESK BELOW.
- GC TO PROVIDE AND INSTALL NEW LINEAR FIXTURES AT BAR AND BACK BAR FACE AS SPECIFIED.
- NEW OWNER SUPPLIED PENDANTS TO BE ALIGNED WITH COUNTERS AND REGIONS.
- UNDER SHELF LIGHTING, SEE LIGHT FIXTURE SCHEDULE.
- NEW BULKHEAD TO BE TRIMMED IN 2" METAL STRAPWORK & MATCHING 1/2" ROUND RIVETS, WITH APPLIED MIRROR AND GALVANIZED SHEET METAL. ALIGN WITH FINISHED COLUMN FACES.
- LINE INDICATES APPROXIMATE LOCATION OF EXTERIOR AWNINGS BY GC. SEE FINISH SCHEDULE FOR AWNING FABRIC INFORMATION.
- LINE INDICATES APPROXIMATE LOCATION OF RETRACTABLE STOREFRONT SYSTEM.
- ACT-1 PANELS INSTALLED TO SURFACE OF GWB CEILING. SEE FINISH SCHEDULE.

Performance of this review does not relieve the applicant from full responsibility to comply with all applicable codes, ordinances and regulations  
 10/29/18

**GENERAL NOTES**

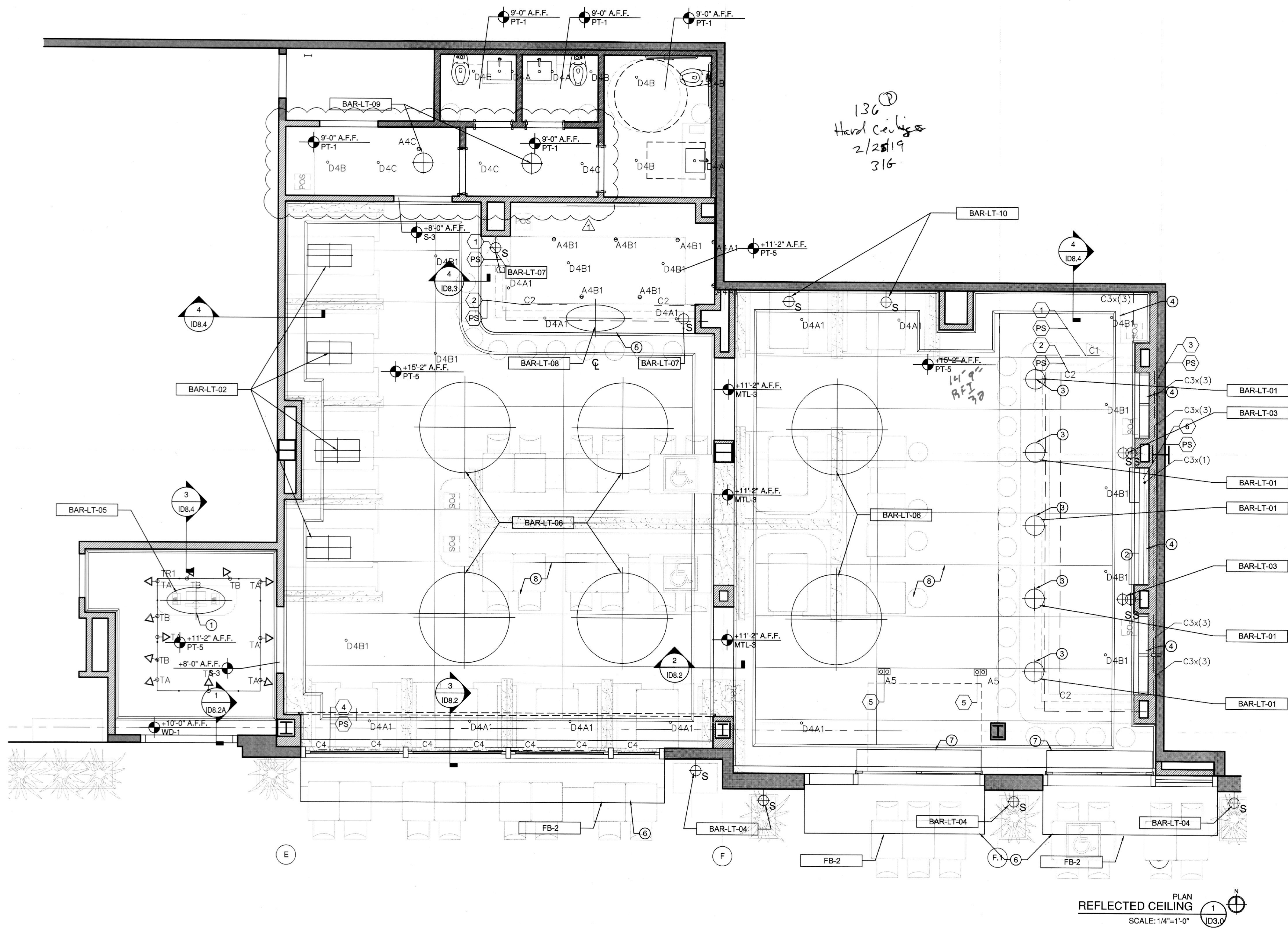
- REFER TO FINISH SCHEDULE, SHEET ID9.0 FOR DETAILED INFORMATION AND LOCATIONS OF ALL INTERIOR FINISHES.
- VERIFY ALL DIMENSIONS IN FIELD.
- REFER TO LIGHTING SCHEDULE, SHEET ID9.1 FOR ALL LIGHTING SPECS.
- ALL CEILING MATERIAL MUST HAVE A CLASS A FIRE RATING.

**ARCH. LIGHTING KEYNOTES**

- TYPE C1 UNDERCOUNTER LED EXTRUSION STRIP GRAZER INSTALLED ALONG BAR FACE. REQS REMOTE POWER SUPPLY.
- TYPE C2 WET LOCATION LED UNDERCOUNTER STRIP EXTRUSION LOC. ABOVE BAR SERVICE COUNTER. REQS REMOTE POWER SUPPLY.
- TYP. TYPE C3 INLAID LED EOS PANELS TO UPLIGHT BOTTLES. REQS REMOTE POWER SUPPLY. SEE DETAILS.
- TYP. TYPE C4 INLAID LED STRIP EXTRUSION LOC ALONG WINDOW SILL TO UPLIGHT CURTAINS. REQS REMOTE POWER SUPPLY.
- TYP. TYPE A2C MULTIPLE DOWNLIGHTS TO BE CROSS-AIMED TO PERFORMANCE AREA.
- TYP. TYPE C3 INLAID LED EOS PANELS IN 5-TIER UNIT TO UPLIGHT BOTTLES ON BAR COUNTERTOP. REQS REMOTE POWER SUPPLY. SEE DETAILS.

**RCP LEGEND**

- NEW RECESSED LED FIXTURE
- NEW LINEAR STRIP FIXTURE
- △ NEW ADJUSTABLE TRACK LIGHTING
- ⊕ NEW OWNER SUPPLIED CONTRACTOR INSTALLED WALL SCONCE
- ⊕ NEW OWNER SUPPLIED CONTRACTOR INSTALLED PENDANT



136  
 Harold ceilings  
 2/20/19  
 316

14'-9"  
 RFI  
 30

PLAN  
 REFLECTED CEILING  
 SCALE: 1/4"=1'-0"

**PROJECT NO. 17054**

**LOCH BAR HOUSTON**

4444 WESTHEIMER RD  
 HOUSTON, TX 77027  
 SUITE 110



*Alexander Smith*

I CERTIFY THAT THESE DOCUMENTS WERE PREPARED OR APPROVED BY ME, AND THAT I AM A DULY LICENSED ARCHITECT UNDER THE LAWS OF TEXAS  
 LICENSE NO. 26750 EXPIRATION DATE: 7/31/2019

REV	DATE	ISSUED FOR
	6/20/18	PERMIT SET
1	10/19/18	PERMIT COMMENT

**REFLECTED CEILING PLAN**

**ID3-0**

PRINTED: 10/19/18  
 © HapstakDemetriou+, pllc 2018