

MARK	DESIGN DEVELOPMENT	DATE
185163	Author	
	Checker	
	Approver	

KEY PLAN



MARK	DESIGN DEVELOPMENT	DATE
185163	Author	
	Checker	
	Approver	

Department of Administration
Office of Facilities Design,
Procurement & Compliance
800 SW Jackson, Suite 700
Topoka, Kansas 66612-1216
Phone 785-296-9889

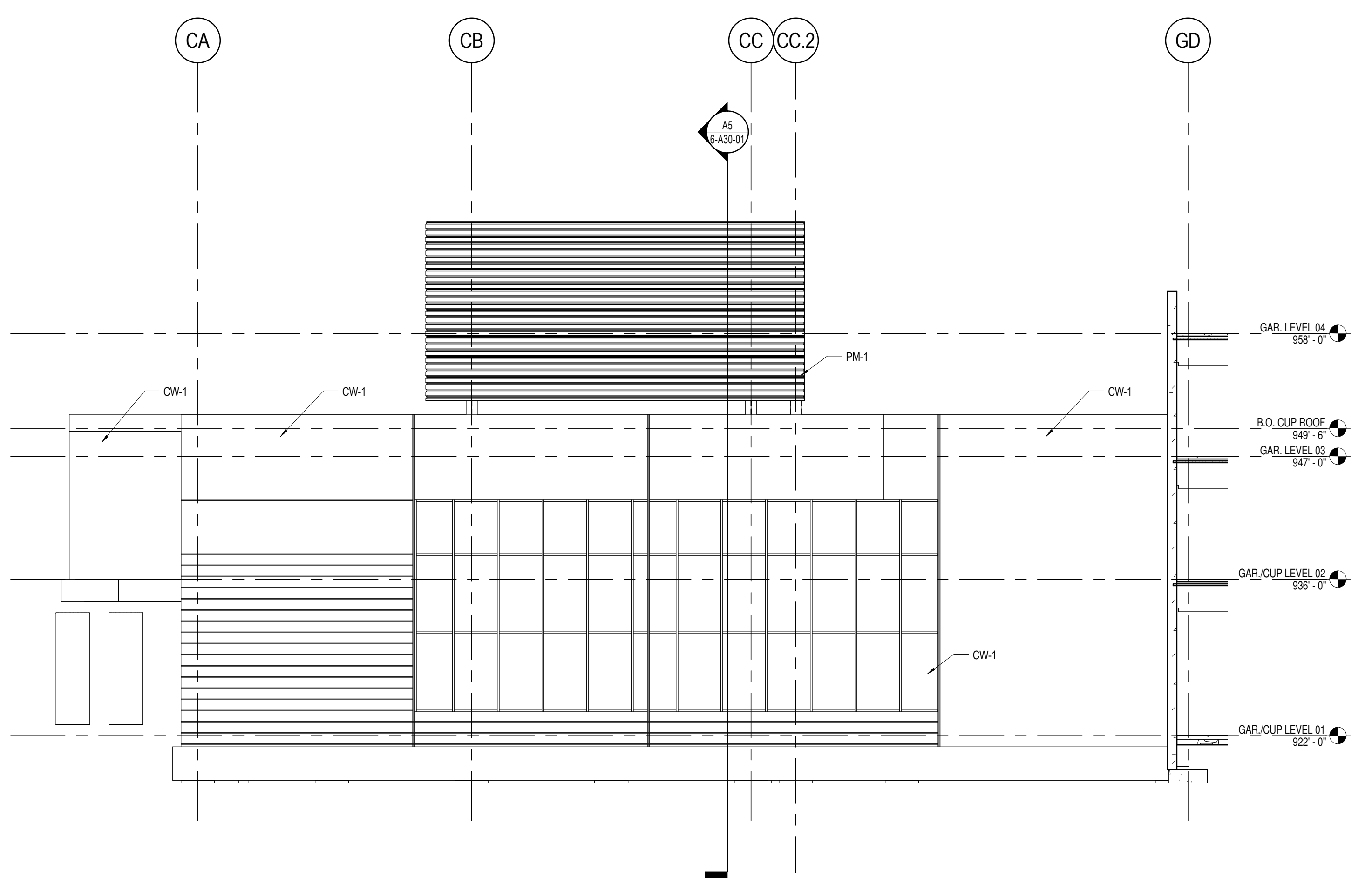
INTEGRATED SCIENCE BUILDING AND NEW STUDENT UNION
**THE UNIVERSITY OF KANSAS - CENTRAL
DISTRICT DEVELOPMENT**

1621 Ousdale Rd., Lawrence, KS 66045
BUILDING NUMBER CUP - 299 / 10476
DATE: 11.02.2015 DRAWN BY: Author

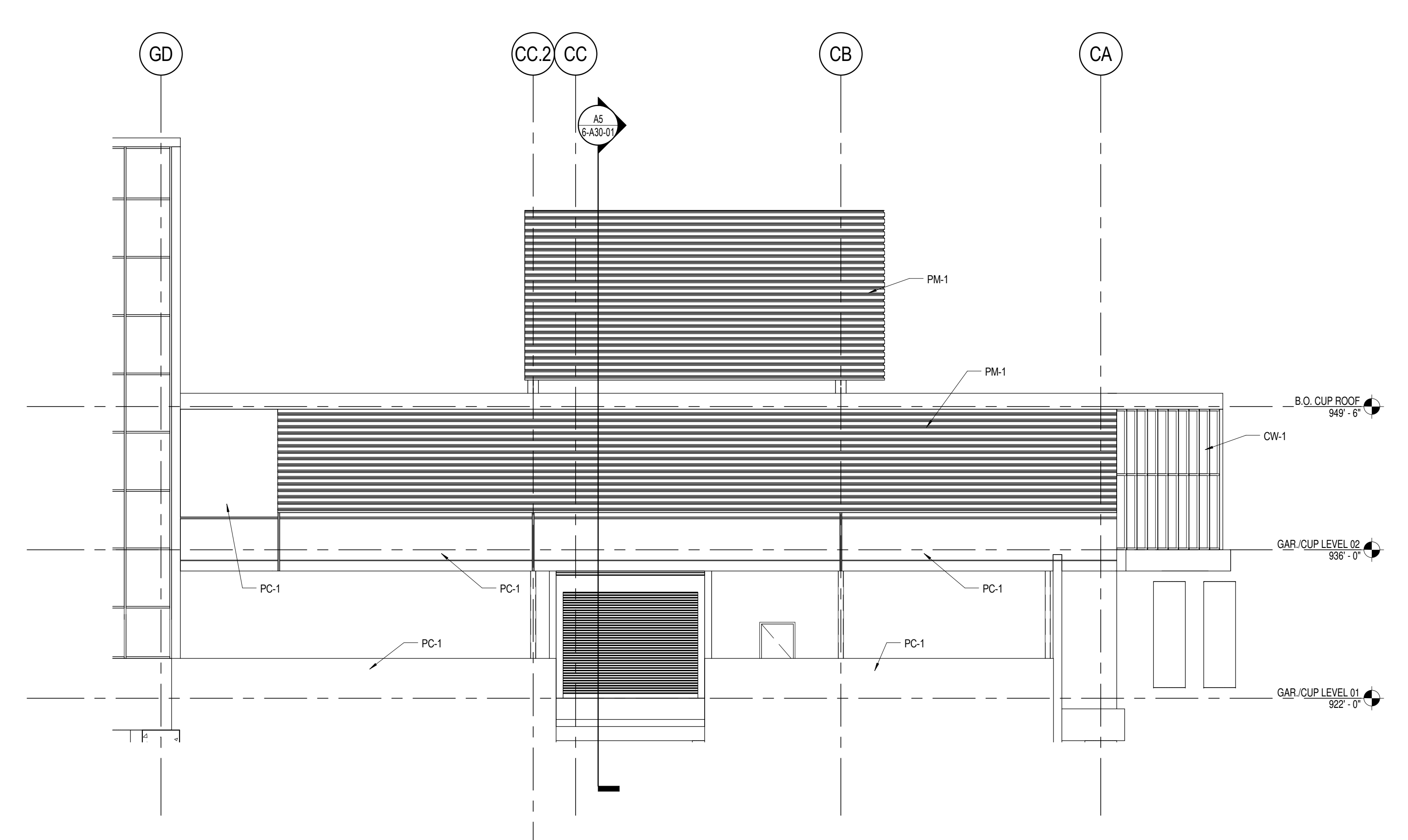
CUP EXTERIOR
ELEVATIONS
A-XXXXX
6-A20-01
DESIGN DEVELOPMENT
Volume 6
Copyright © 2015 Perkins+Will

ELEVATION MATERIAL LEGEND

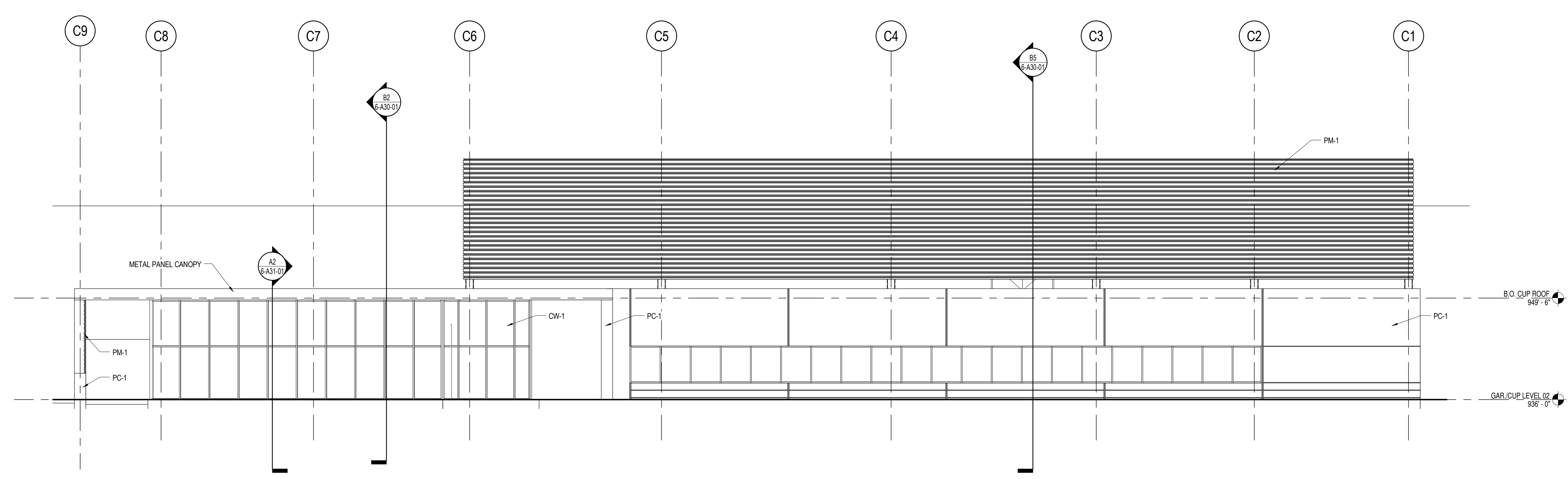
PC-1	PRECAST ARCHITECTURAL CONCRETE WALL/SPANDREL
CW-1	GLAZED CURTAIN WALL
PM-1	PERFORATED METAL SCREEN WALL CENTRIA BR5-36 PERFORATED SCREEN



B5 CUP West Elevation
1/8" = 1'-0"



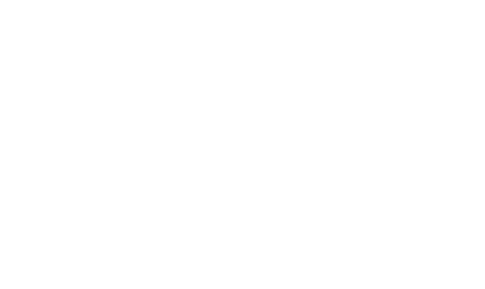
B2 CUP East Elevation
1/8" = 1'-0"



A4 CUP North Elevation
1/8" = 1'-0"

MARK	DESIGN DEVELOPMENT ISSUE	DATE
Job Number	185163	
Drawn	Author	
Checked	Checker	
Approved	Approver	

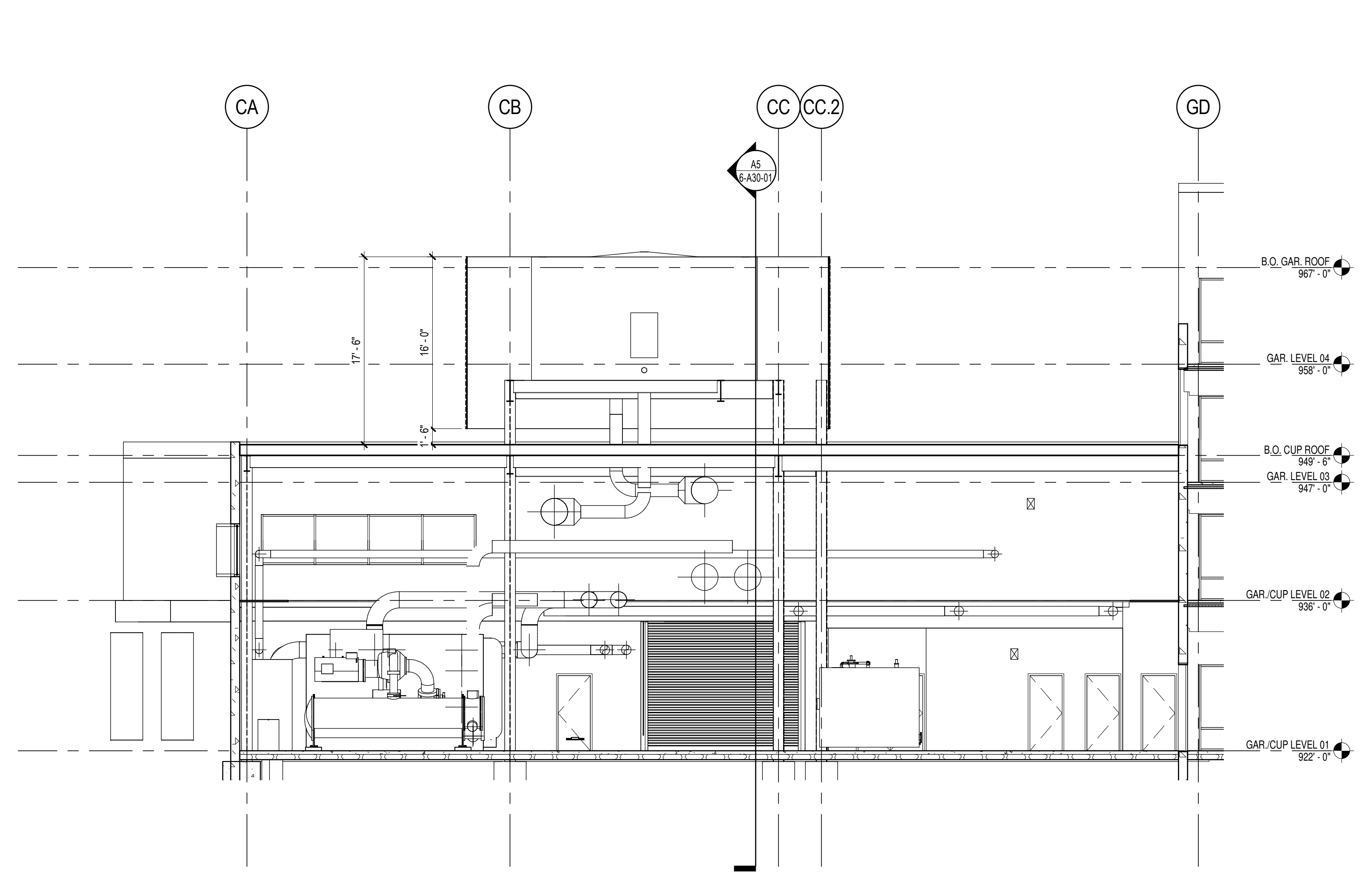
KEY PLAN



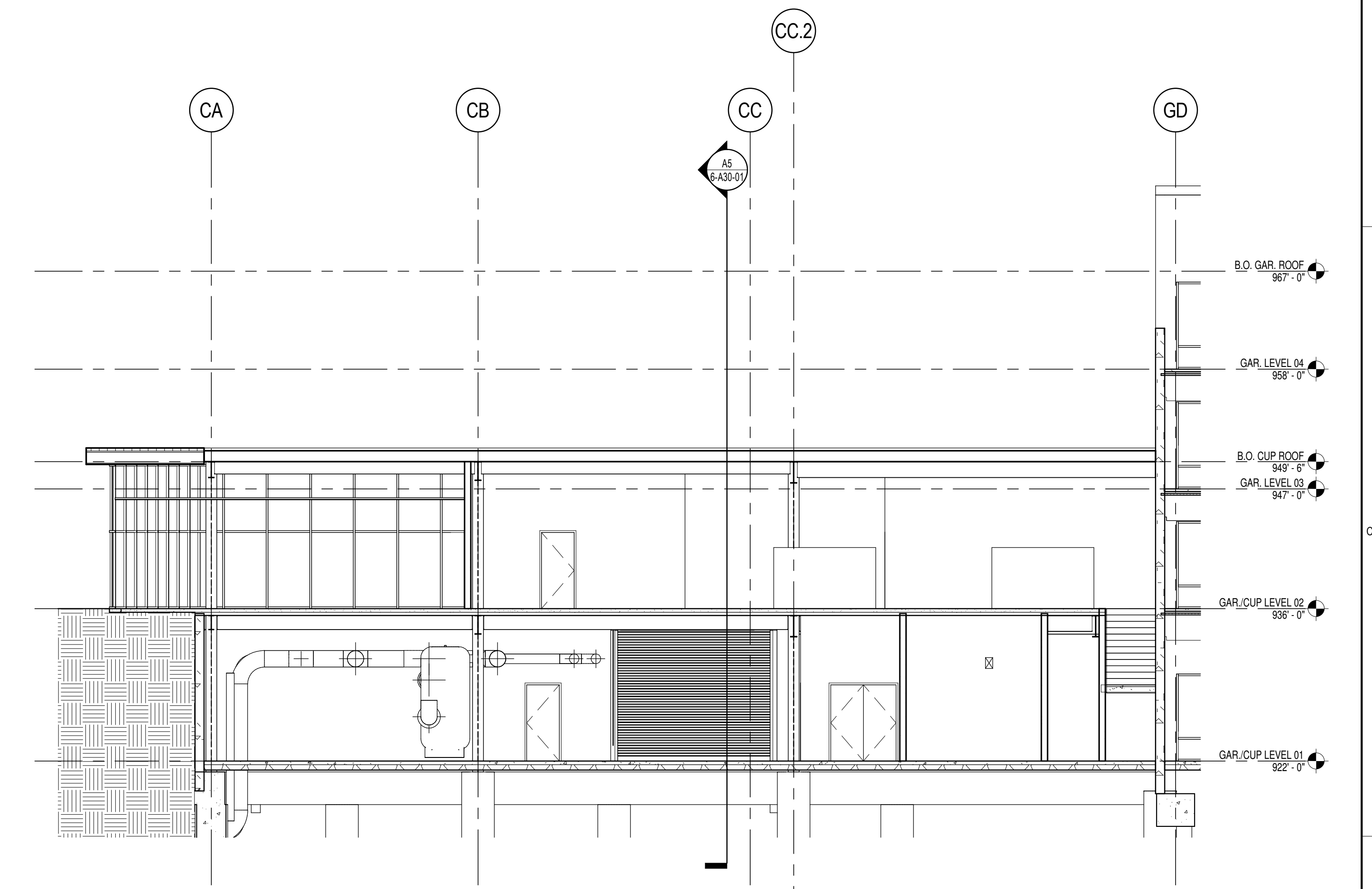
Department of Administration
Office of Facilities Design,
Procurement, Construction
& Compliance
800 SW Jackson, Suite 700
Topoka, Kansas 66612-1216
Phone 785-296-8889

INTEGRATED SCIENCE BUILDING AND NEW STUDENT UNION
THE UNIVERSITY OF KANSAS - CENTRAL
DISTRICT DEVELOPMENT
1621 Ousdale Rd. Lawrence, KS 66045
BUILDING NUMBER CUP - 299 / 10476
DATE: 11.02.2015 DRAWN BY: Author

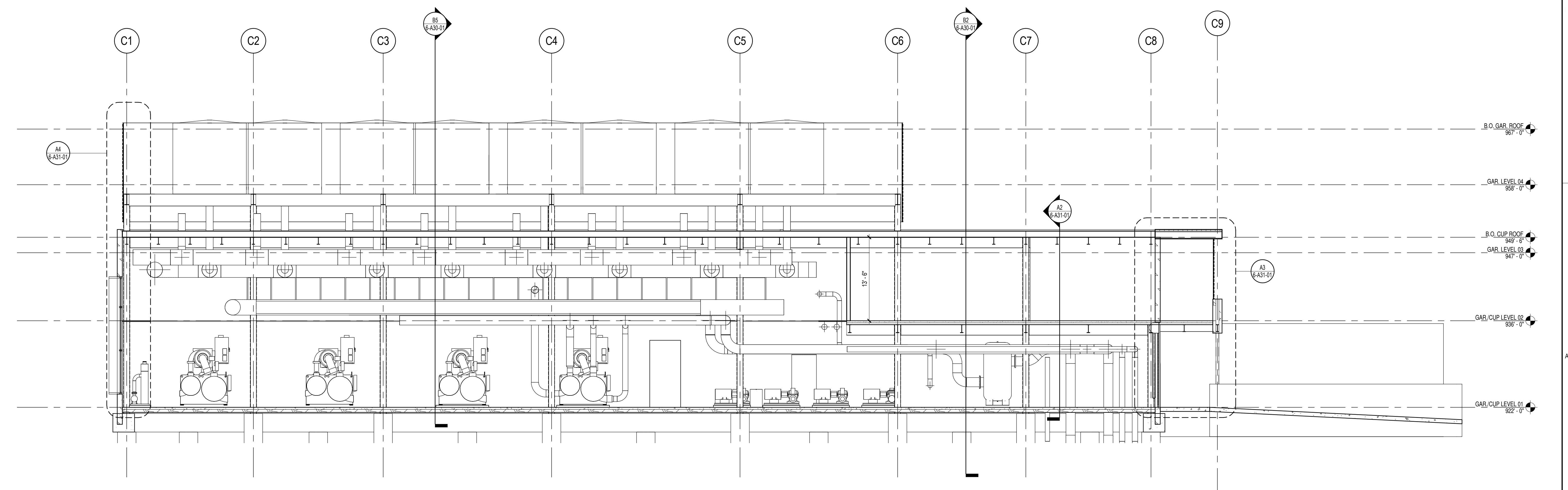
CUP BUILDING SECTIONS
A-XXXXXX
6-A30-01
DESIGN DEVELOPMENT
Volume 6
Copyright © 2015 Perkins+Will



B5 CUP Building Section - Latitudinal Thru Main Mechanical Room
1/8" = 1'-0"

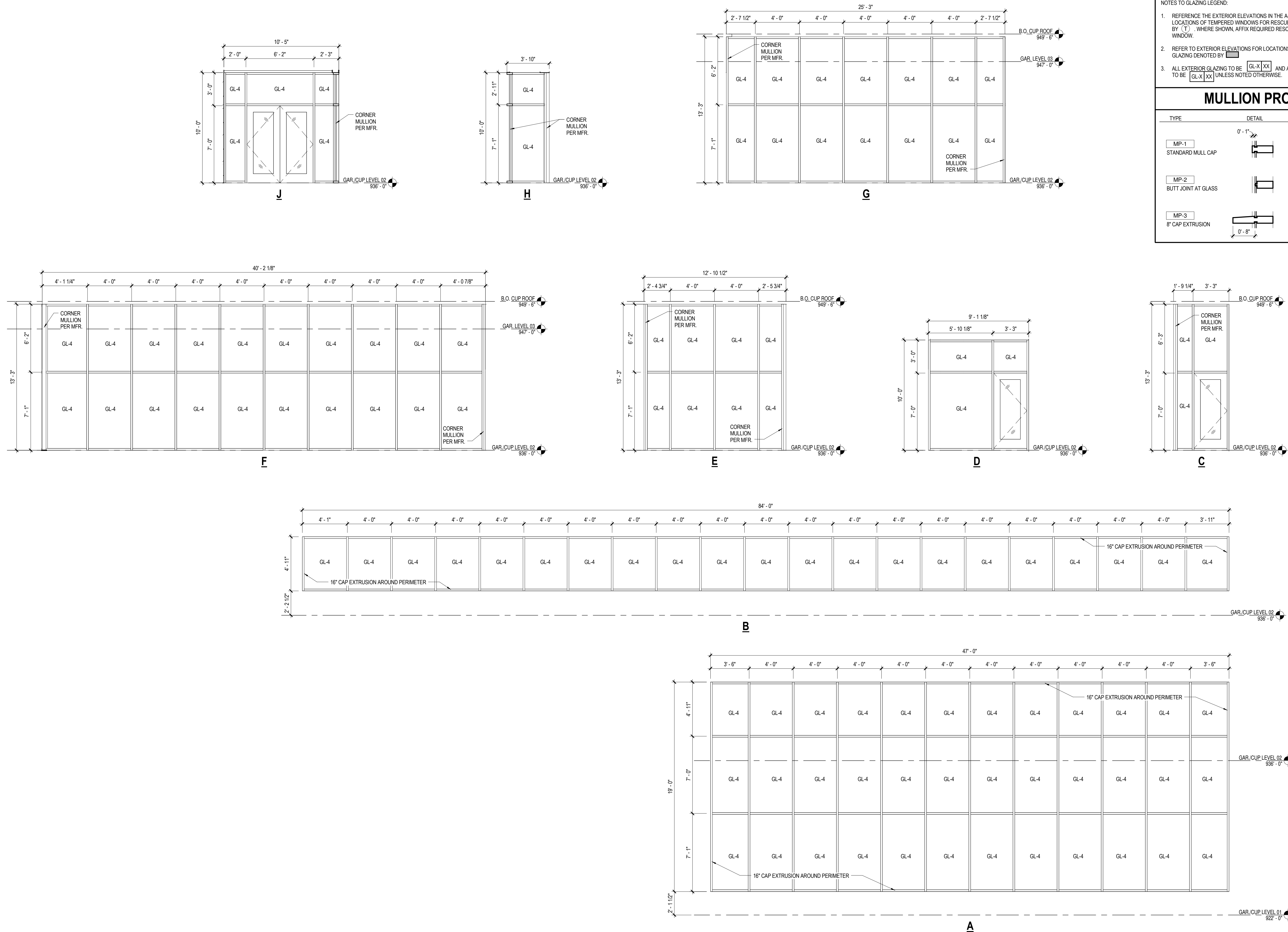


B2 CUP Building Section - Latitudinal Thru Mezz.
1/8" = 1'-0"



A5 CUP Building Section - Longitudinal
1/8" = 1'-0"

A4 CURTAIN WALL / STOREFRONT ELEVATIONS
1/4" = 1'-0"



GLAZING LEGEND

GL-X XX

GLASS SHEET COMPOSITION:

- FL FLOAT GLASS
- HS HEAT STRENGTHENED GLASS
- FT TEMPERED GLASS
- LM LAMINATED GLASS
- W WIRE GLASS
- SP SPANDREL GLASS
- LE LOW-E COATING GLASS
- SK TEMPERED OR LAMINATED GLASS (FOR USE ON SLOPED GLAZING)
- F1 TYPE 1
- M1 TYPE 1

GENERIC GLASS TYPE:

- GL-1 SINGLE PANE CLEAR GLASS
- GL-2 SINGLE PANE TINTED GLASS
- GL-3 INSULATED CLEAR GLASS
- GL-4 INSULATED TINTED GLASS
- GL-5 INSULATED SPANDREL GLASS
- GL-6 FIRE-RATED GLASS
- GL-7 DECORATIVE/PATTERNED GLASS
- GL-8 BULLET-RESISTANT GLASS
- GL-9 MIRROR GLASS
- GL-10 LEAD GLASS

NOTES TO GLAZING LEGEND:

- REFERENCE THE EXTERIOR ELEVATIONS IN THE A-30X SERIES FOR THE LOCATIONS OF TEMPERED WINDOWS FOR RESCUE ASSISTANCE DENOTED BY (T) WHERE SHOWN. AFFIX REQUIRED RESCUE ASSISTANCE DETAIL ON THE WINDOW.
- REFER TO EXTERIOR ELEVATIONS FOR LOCATIONS OF SPANDREL GLASS PANEL GLAZING DENOTED BY []
- ALL EXTERIOR GLAZING TO BE [GL-X XX] AND ALL INTERIOR GLAZING TO BE [GL-X XX] UNLESS NOTED OTHERWISE.

MULLION PROFILES

TYPE	DETAIL	SYMBOL
MP-1 STANDARD MULL CAP		
MP-2 BUTT JOINT AT GLASS		
MP-3 8" CAP EXTRUSION		

PERKINS + WILL

1001 McKinney
Suite 1300
Houston, TX 77002
713.366.4000
713.338.3339
www.perkinswill.com

THE UNIVERSITY OF KANSAS

CIVIL
Professional Engineering Consultants
1263 SW Topoka Blvd.
Topoka, KS 66612

STRUCTURAL
Walter P. Moore
920 Main St., 10th Floor
Kansas City, MO 64105

MEP/PP
Affiliated Engineers, Inc.
5802 Research Park Blvd.
Madison, WI 53715

LANDSCAPING
Confluence
417 Delaware St.
Kansas City, MO 64108

ASSOCIATE ARCHITECT
8034 Corner
Overland Park, KS 66204

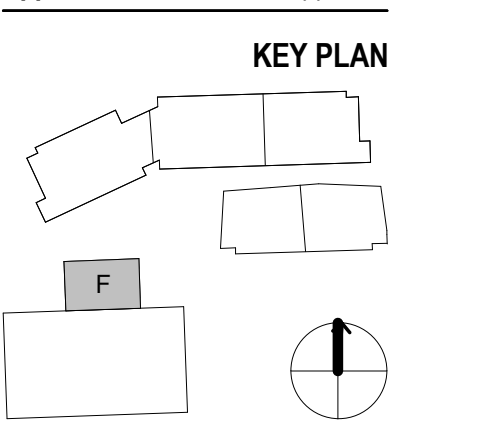
DEVELOPER
EDGEMOOR
7500 Old Georgetown Road
Bethesda, MD 20814

NOTE: DOCUMENTS ARE INCOMPLETE AND MAY NOT BE USED FOR REGULATORY APPROVAL, PERMITTING, OR CONSTRUCTION PURPOSES.

ISSUE CHART

MARK	DESIGN DEVELOPMENT ISSUE	DATE

Job Number: 185163
Drawn: Author
Checked: Checker
Approved: Approver



Department of Administration
Office of Facilities Design,
Procurement & Compliance
800 SW Jackson, Suite 700
Topoka, Kansas 66612-1216
Phone 785-296-8889

INTEGRATED SCIENCE BUILDING AND NEW STUDENT UNION
THE UNIVERSITY OF KANSAS - CENTRAL DISTRICT DEVELOPMENT
1621 Ousdale Rd. Lawrence, KS 66045
BUILDING NUMBER CUP - 299 / 10476
DATE: 11.02.2015 DRAWN BY: Author

EXTERIOR WINDOW SCHEDULE

A-XXXXX
6-A33-01

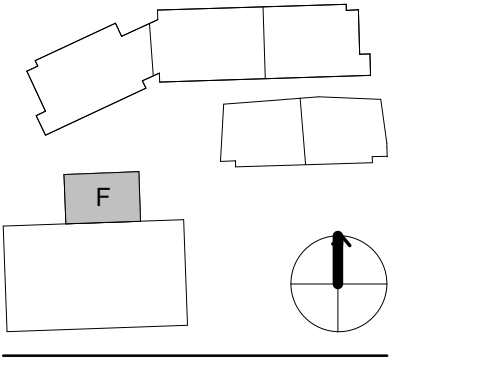
DESIGN DEVELOPMENT 11.02.2015

NOTE: DOCUMENTS ARE
INCOMPLETE AND MAY NOT BE
USED FOR REGULATORY
APPROVAL, PERMITTING, OR
CONSTRUCTION PURPOSES.

ISSUE CHART

MARK	ISSUE	DATE
Job Number	185163	
Drawn	Author	
Checked	Checker	
Approved	Approver	

KEY PLAN



Department of Administration
Office of Facilities Design,
Procurement, Construction,
& Compliance
800 SW Jackson, Suite 700
Topoka, Kansas 66612-1216
Phone 785-296-8889

INTEGRATED SCIENCE BUILDING AND NEW STUDENT UNION
**THE UNIVERSITY OF KANSAS - CENTRAL
DISTRICT DEVELOPMENT**
1621 Ousdale Rd., Lawrence, KS 66045
BUILDING NUMBER CUP - 299 / 10476
DATE: 11.02.2015 DRAWN BY: Author

ENLARGED PLANS AND
INTERIOR ELEVATIONS

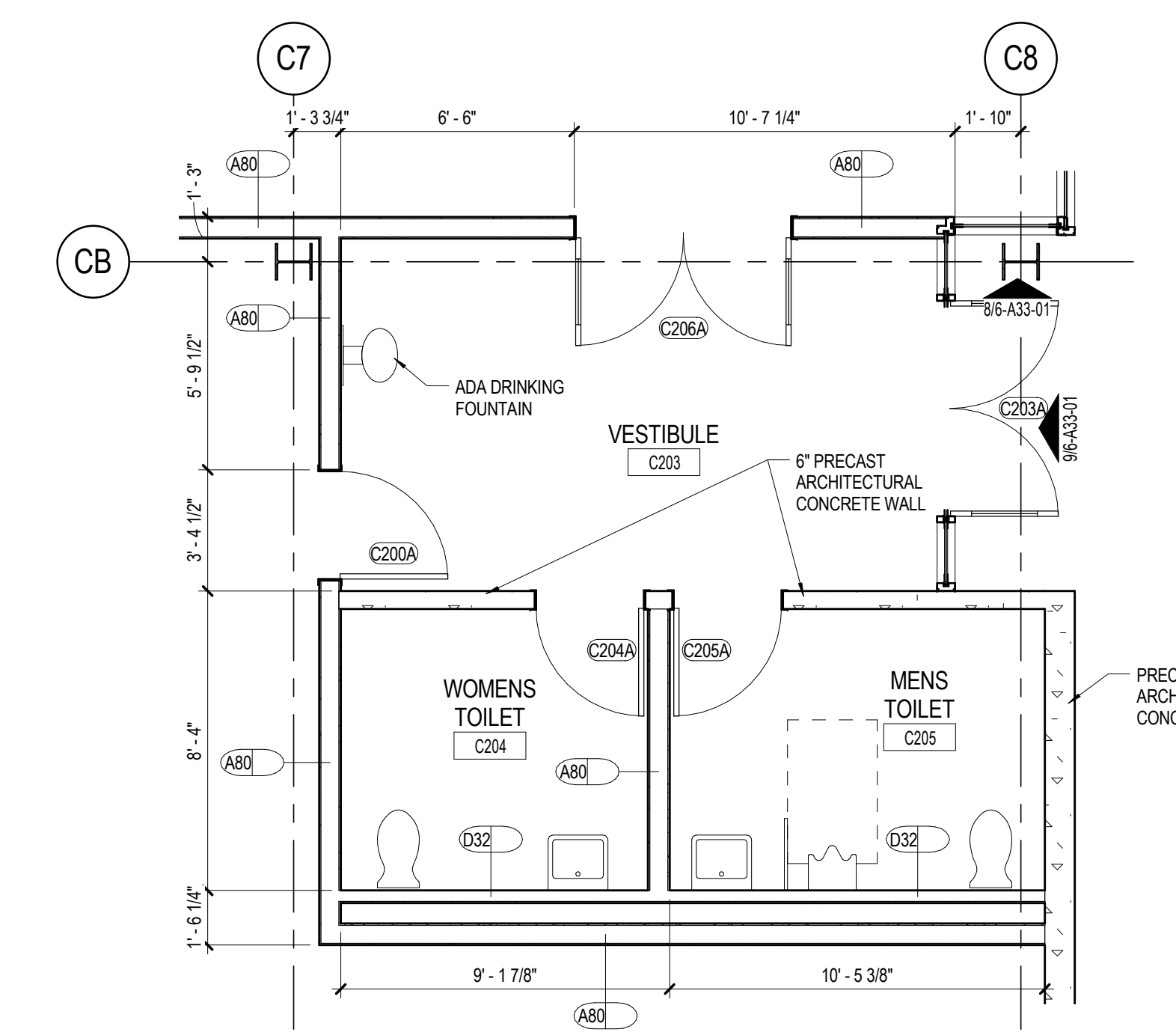
A-XXXXX

6-A40-01

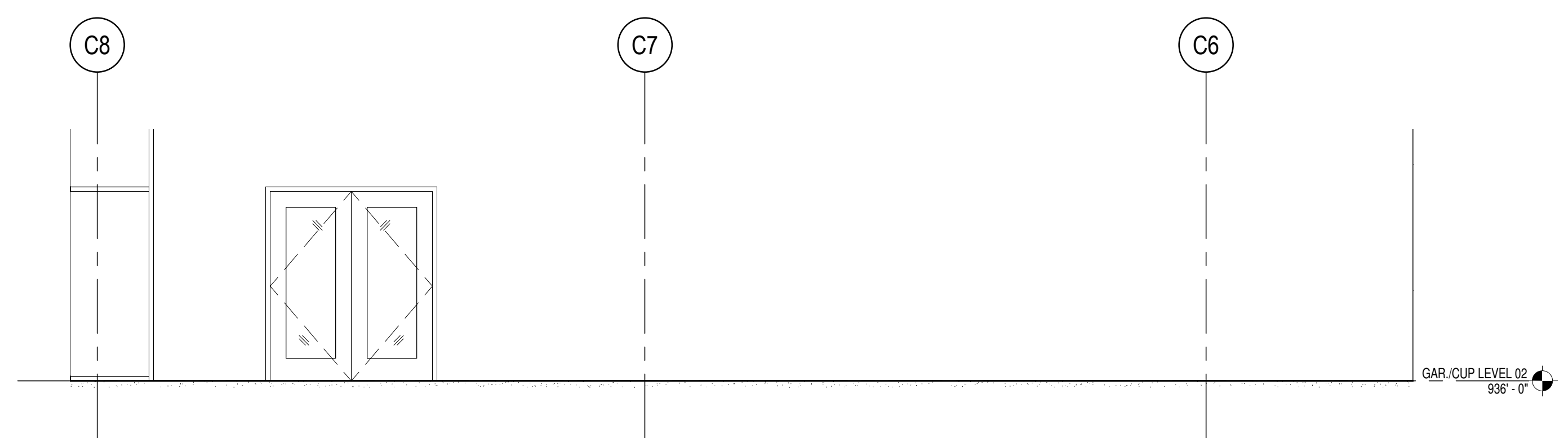
DESIGN DEVELOPMENT

Volume 6
Copyright © 2015 Perkins+Will

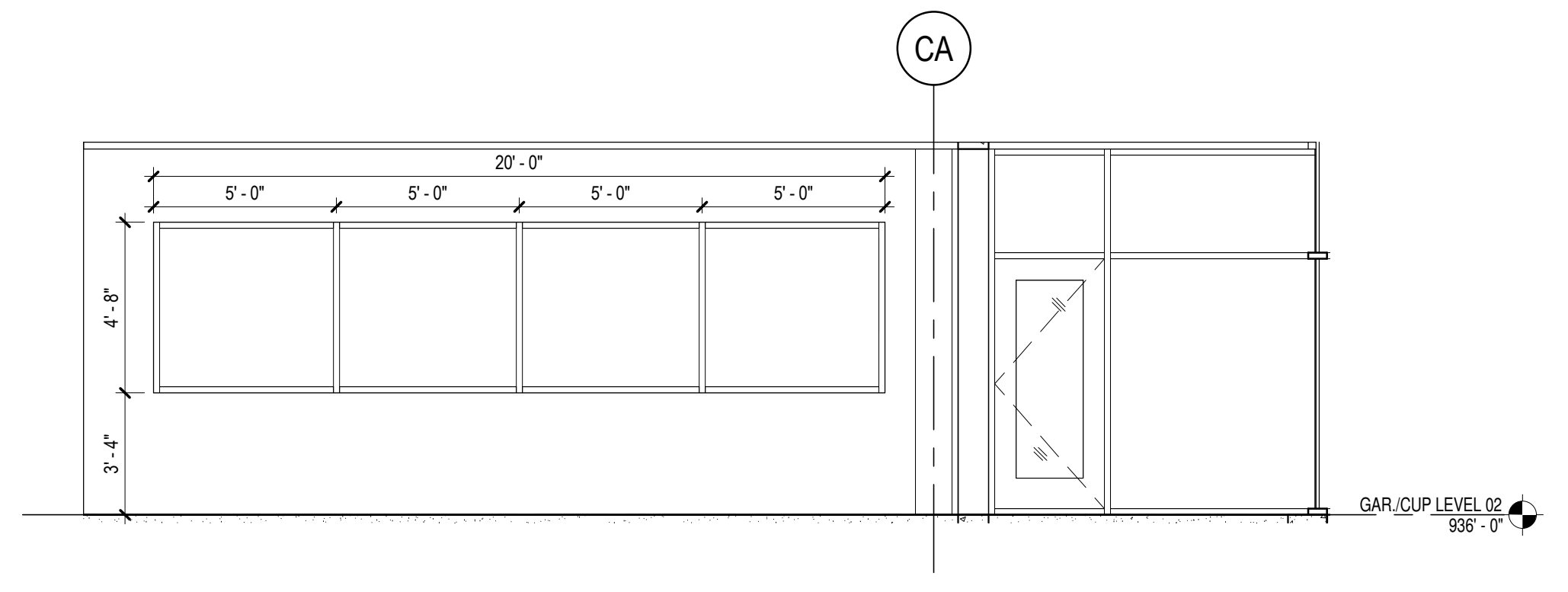
DESIGN DEVELOPMENT 11.02.2015



A1 ENLARGED VESTIBULE AND RESTROOM PLAN
1/4" = 1'-0"



A3 TEACHING LAB - TEACHING WALL
1/4" = 1'-0"



A5 TEACHING LAB - CUP WINDOW WALL
1/4" = 1'-0"

PARTITION TYPES GENERAL NOTES

- REFER TO FLOOR PLAN SERIES A-200X FOR LOCATION OF PARTITION TYPES. ALL PARTITIONS ARE TYPE "7XX" UNLESS NOTED OTHERWISE. NOT ALL PARTITION TYPES SHOWN ARE UTILIZED.
 - REFER TO A-23 SERIES FOR FINAL FINISHES ON PARTITIONS. PARTITION TYPES IN CHARTS REFER TO BASE WALL ONLY.
 - WHEN BLOCKING REQUIRED IN A PARTITION, USE A MINIMUM .033" (20 GA) STUD.
 - "LINE OF STRUCTURE" AS SHOWN AT THE HEAD CONDITIONS OF THE PARTITION DETAIL DOES NOT INDICATE THE EXACT CONSTRUCTION CONDITION. REFER TO A-010 SERIES "CODE COMPLIANCE DETAILS" FOR ADDITIONAL INFORMATION CONCERNING RATED PARTITIONS.
 - ISOLATE NON-LOAD BEARING FRAMING FROM STRUCTURAL ELEMENTS TO PREVENT THE TRANSFER OF LOAD TO PARTITION FRAMING. STOP STUDS 3/8" BELOW CEILING RUNNER (TOP TRACK) TO ALLOW FOR VERTICAL EXPANSION. SET TOP TRACK 1" BELOW DEFLECTION CHANNEL. DO NOT ATTACH STUDS TO TOP TRACK. DO NOT ATTACH GYPSUM BOARD TO THE DEFLECTION TRACK. THIS MAY ALSO BE ACHIEVED, AT THE CONTRACTOR'S OPTION, BY UTILIZING THE PROPRIETARY SYSTEM DESCRIBED IN THE SPECIFICATIONS. REF 01A8102
 - REFER TO A-82?? AND A-83?? FOR NOTES REGARDING STUDS AT OPENINGS.
- FIRE RATED PARTITIONS**
- REFER TO A-01A SERIES "CODE COMPLIANCE DETAILS" FOR ADDITIONAL INFORMATION ON PENETRATIONS THRU RATED PARTITIONS. FIRE RESISTANT JOINT SYSTEMS, SLIP TRACKS AT NON-BEARING PARTITIONS CONNECTION TO STRUCTURE AND WALL PRIORITY.
- ACOUSTICAL (THE FOLLOWING NOTES APPLY TO ALL PARTITIONS DESIGNATED TO HAVE A SOUND TRANSMISSION CLASS (STC) RATING ON THE PARTITION CHARTS.)**
- ALL ACOUSTICALLY CLASSIFIED PARTITIONS SHALL BE CONSTRUCTED IN ACCORDANCE TO THE REFERENCED TEST.
 - STAGGER AND SEAL ALL JOINTS ON MULTIPLE GYPSUM BOARD LAYER PARTITIONS.
 - SEAL PARTITIONS AIR TIGHT AT FLOORS, SIDES, AND CEILINGS ON BOTH SIDES WITH NON-HARDENING ACOUSTICAL SEALANT IN ACCORDANCE TO REFERENCED TEST.
 - ALL BATTS AND BLANKETS IN RATED PARTITIONS MUST BEAR THE REQUIRED UL CLASSIFICATION MARKING AS TO FIRE-RESISTANCE. REFER TO CODE COMPLIANCE DETAILS IN A-010 SERIES.
 - AVOID COMPRESSING ACOUSTICAL BATT INSULATION AT BLOCKING AND RECESSED ITEMS IN ACOUSTIC RATED WALLS.
 - REFER TO DETAILS 9, 10, 11, AND 12 ON SHEET A-8102 FOR PARTITION TYPES WITH A DESIGNATED STC RATING.
 - SEAL ALL WALL INTERSECTIONS AND CONTROL JOINTS AT ACOUSTICALLY CLASSIFIED PARTITIONS IN ACCORDANCE WITH DETAIL 12A-8102.
 - SEAL ALL CONDUIT, STRUCTURAL DUCT AND LARGE PIPE PENETRATIONS ACCORDING TO 9A-8102 UNLESS THE PARTITION IS ALSO FIRE RATED. WHERE THE CODE COMPLIANCE DETAILS ON THE A-010 SERIES SHOULD BE REFERENCED.
 - OUTLETS ON OPPOSITE SIDES OF ACOUSTICALLY CLASSIFIED PARTITIONS SHOULD BE SEPARATED BY A MINIMUM OF ONE STUD. SEAL OUTLETS IN ACCORDANCE WITH 10A-8102 UNLESS THE PARTITION IS FIRE RATED. IF THE PARTITION IS FIRE RATED THEN REFER TO A-010 SERIES "CODE COMPLIANCE DETAILS."
 - ALL BOXES REQUIRED TO BE ACOUSTICALLY SEALED SHALL BE SEALED PRIOR TO CLOSING IN PARTITIONS AND INSTALLING DEVICES AND COVER PLATES. VERIFY COMPLIANCE WITH STC.

**PERKINS
+ WILL**

1001 McKinney
Suite 1300
Houston, TX 77002
713.366.4000
713.328.3339
www.perkinswill.com

**THE UNIVERSITY OF
KANSAS**

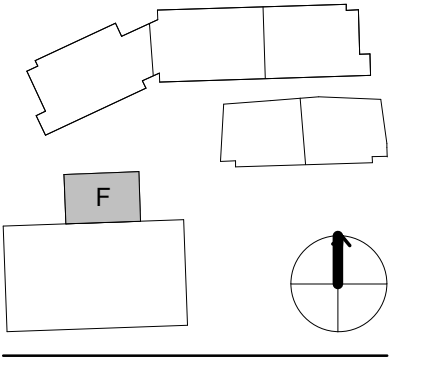
PERKINS + WILL
Professional Engineering Consultants
1263 SW Topoka Blvd.
Topoka, KS 66612
STRUCTURAL
Walter P. Moore
920 Main St., 10th Floor
Kansas City, MO 64105
MEP/FP
Affiliated Engineers, Inc.
5802 Research Park Blvd.
Madison, WI 53715
LANDSCAPING
Confluence
417 Delaware St.
Kansas City, MO 64108
ASSOCIATE ARCHITECT
Mortier &
8324 Corner
Overland Park, KS 66204
DEVELOPER
EDGE MOOR
7500 Old Georgetown Road
Bethesda, MD 20814

NOTE: DOCUMENTS ARE INCOMPLETE AND MAY NOT BE USED FOR REGULATORY APPROVAL, PERMITTING, OR CONSTRUCTION PURPOSES.

ISSUE CHART

MARK	DESIGN DEVELOPMENT ISSUE	DATE
		185163
Job Number	Author	
Drawn	Checker	
Checked	Approver	
Approved		

KEY PLAN



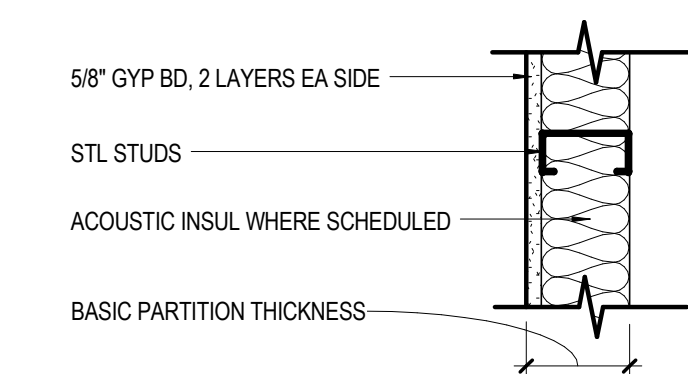
Department of Administration
Office of Facilities Design,
Procurement, Construction,
& Compliance
800 SW Jackson, Suite 700
Topoka, Kansas 66612-1216
Phone 785-296-8889

INTEGRATED SCIENCE BUILDING AND NEW STUDENT UNION
THE UNIVERSITY OF KANSAS - CENTRAL DISTRICT DEVELOPMENT
1621 Ousebakh Rd., Lawrence, KS 66045
BUILDING NUMBER CUP - 299 / 10476
DATE: 11.02.2015 DRAWN BY: Author

INTERIOR PARTITION TYPE CHARTS

A-XXXXX
6-A61-01

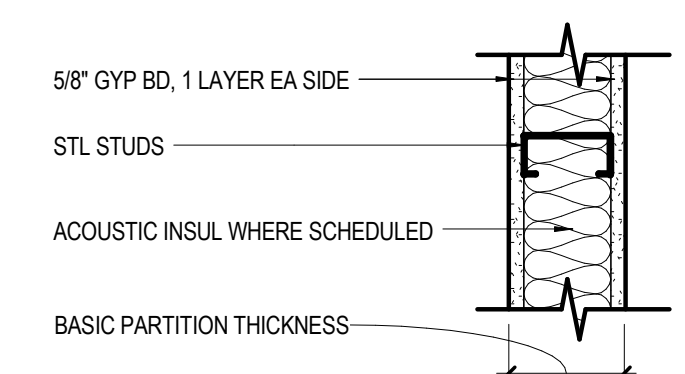
DESIGN DEVELOPMENT
Volume 6
Copyright © 2015 Perkins+Will



	D1	D2	D3	D4	D5	D6	D7	D8	D9	DETAIL NO.
NON-RATED WITH GYP BD TO STRUCTURE ABOVE	D11	D21	D31	D41	D51	D61	D71	D81	D91	01A-8102 SIM
NON-RATED WITH GYP BD TO 6" ABOVE CEILING	D12	D22	D32	D42	D52	D62	D72	D82	D92	02A-8102 SIM
NON-RATED WITH STUDS & GYP BD TO FINISHED CEILING	D13	D23	D33	D43	D53	D63	D73	D83	D93	03A-8102 SIM
STUD SIZE	2 1/2"	2 1/2"	3 5/8"	3 5/8"	4"	4"	6"	6"	1 1/2"	
BASIC PARTITION THICKNESS	3 1/8"	3 1/8"	4 1/4"	4 1/4"	4 5/8"	4 5/8"	6 5/8"	6 5/8"	2 1/8"	
ACOUSTICAL INSULATION THICKNESS	-	2"	-	3"	-	3"	-	5 1/2"	1"	
ACOUSTICAL TEST NUMBER	NOTE 1	NOTE 1	NOTE 1	NOTE 1	NOTE 1	NOTE 1	NOTE 1	NOTE 1	NOTE 1	

NOTE:
1. STCS ARE PREDICTED USING THE "INSUL" COMPUTER PROGRAM.
2. STCS ARE BASED ON 0.018" THICK (25 GA) STUDS.
3. REFER TO 20A-8102 FOR BRACING.

C1010.10-4D



	A1	A2	A3	A4	A5	A6	A7	A8	DETAIL NO.
1-HR RATED WITH GYP BD TO STRUCTURE ABOVE	A20	A30	A40	A50	A60	A70	A80		01A-8102
NON-RATED WITH GYP BD TO STRUCTURE ABOVE	A11	A21	A31	A41	A51	A61	A71	A81	01A-8102 SIM
NON-RATED WITH GYP BD TO 6" ABOVE CEILING	A12	A22	A32	A42	A52	A62	A72	A82	02A-8102
NON-RATED WITH STUDS & GYP BD TO FINISHED CEILING	A13	A23	A33	A43	A53	A63	A73	A83	03A-8102
PARTIAL HEIGHT PARTITION - SEE FLOOR PLANS FOR HEIGHTS. NOTE 1.	A14	A24	A34	A44	A54	A64	A74	A84	13A-8102
STUD SIZE	2 1/2"	2 1/2"	3 5/8"	3 5/8"	4"	4"	6"	6"	
BASIC PARTITION THICKNESS	3 3/4"	3 3/4"	4 7/8"	4 7/8"	5 1/4"	5 1/4"	7 1/4"	7 1/4"	
ACOUSTICAL INSULATION THICKNESS	-	2"	-	3"	-	3"	-	5 1/2"	
ACOUSTICAL TEST NUMBER	SIM USG 86808	SIM SA 831001	SIM USG 86808	SIM USG 870717	SIM USG 86808	SIM SA 870717	SIM USG 86808	SIM USG 870717	NOTE 3 NOTE 4
FIRE TEST NUMBER (WHERE APPLICABLE)	-	UL DES U419	UL DES U465	UL DES U465	UL DES U465	UL DES U465	UL DES U465	UL DES U465	

NOTE:
1. REFER TO 13A-8102 FOR PARTIAL HEIGHT PARTITION DETAIL.
2. REFER TO 04A-8102 FOR FLOOR DETAIL.
3. STC IS PREDICTED USING THE "INSUL" COMPUTER PROGRAM.
4. STC IS MODIFIED FROM THE REFERENCE.
5. STC IS BASED ON 0.018" THICK (25 GA) STUDS.
6. WHERE AN "X" NEXT TO THE PARTITION TAG, PROVIDE 3/4" PLYWOOD BEHIND THE GYP BD ON THE STORE ROOM SIDE.

C1010.10-4A

DOOR SCHEDULE															
MARK		DOOR						FRAME				FIRE RATING	HARDWARE SET NO	REMARKS	
DOOR NO	ROOM NAME	SIZE			TYPE	MATL	FINISH	GLZ	TYPE	MATL	FINISH				DETAILS
		W	HT	THK								HEAD	JAMB	SILL	
GAR./CUP LEVEL 01															
C100A	MAIN MECHANICAL	3'-0"	7'-0"	0'-1 3/4"	F	HM	PNT	---	1	HM	PNT	---	---	---	
C100B	MECH. MEZZANINE	15'-3 1/2"	13'-9"	0'-0 1/2"	CC	---	---	---	---	---	---	---	---	---	
C100C	MAIN MECHANICAL	3'-0"	7'-0"	0'-1 3/4"	F	HM	PNT	---	1	HM	PNT	---	---	---	
C101A	MAIN MECHANICAL	3'-0"	7'-0"	0'-1 3/4"	F	HM	PNT	---	1	HM	PNT	---	---	---	
C102A	MAIN MECHANICAL	6'-0"	7'-0"	0'-1 3/4"	F	HM	PNT	---	1	HM	PNT	---	---	---	
C102B	SWITCHGEAR ROOM	3'-0"	7'-0"	0'-1 3/4"	F	HM	PNT	---	1	HM	PNT	---	---	---	
C103A	MAIN MECHANICAL	3'-0"	7'-0"	0'-1 3/4"	F	HM	PNT	---	1	HM	PNT	---	---	---	
GAR./CUP LEVEL 02															
C200A	VESTIBULE	3'-0"	7'-0"	0'-1 3/4"	F	HM	PNT	---	1	HM	PNT	---	---	---	45 MIN.
C201A	ELEVATOR CONTROLLER CLOSET	3'-0"	7'-0"	0'-1 3/4"	F	---	---	---	---	---	---	---	---	---	
C202A	MECH. MEZZANINE	3'-0"	7'-0"	0'-1 3/4"	F	HM	PNT	---	1	HM	PNT	---	---	---	
C203A	VESTIBULE	6'-0"	7'-0"	0'-1 3/4"	FG	AL1	---	GL-4	RE: WDW SCHED	AL1	---	---	---	---	
C204A	WOMENS TOILET	3'-0"	7'-0"	0'-1 3/4"	F	HM	PNT	---	1	HM	PNT	---	---	---	
C205A	MENS TOILET	3'-0"	7'-0"	0'-1 3/4"	F	HM	PNT	---	1	HM	PNT	---	---	---	
C206A	TEACHING LAB	6'-0"	7'-0"	0'-1 3/4"	FG	AL1	---	GL-3	RE: WDW SCHED	AL1	---	---	---	---	
C206B	VESTIBULE	3'-0"	6'-10"	0'-1 3/4"	FG	AL1	---	GL-3	RE: WDW SCHED	AL1	---	---	---	---	
C207A	VESTIBULE	3'-0"	6'-10"	0'-1 3/4"	FG	AL1	---	GL-4	RE: WDW SCHED	AL1	---	---	---	---	
Grand total: 16															

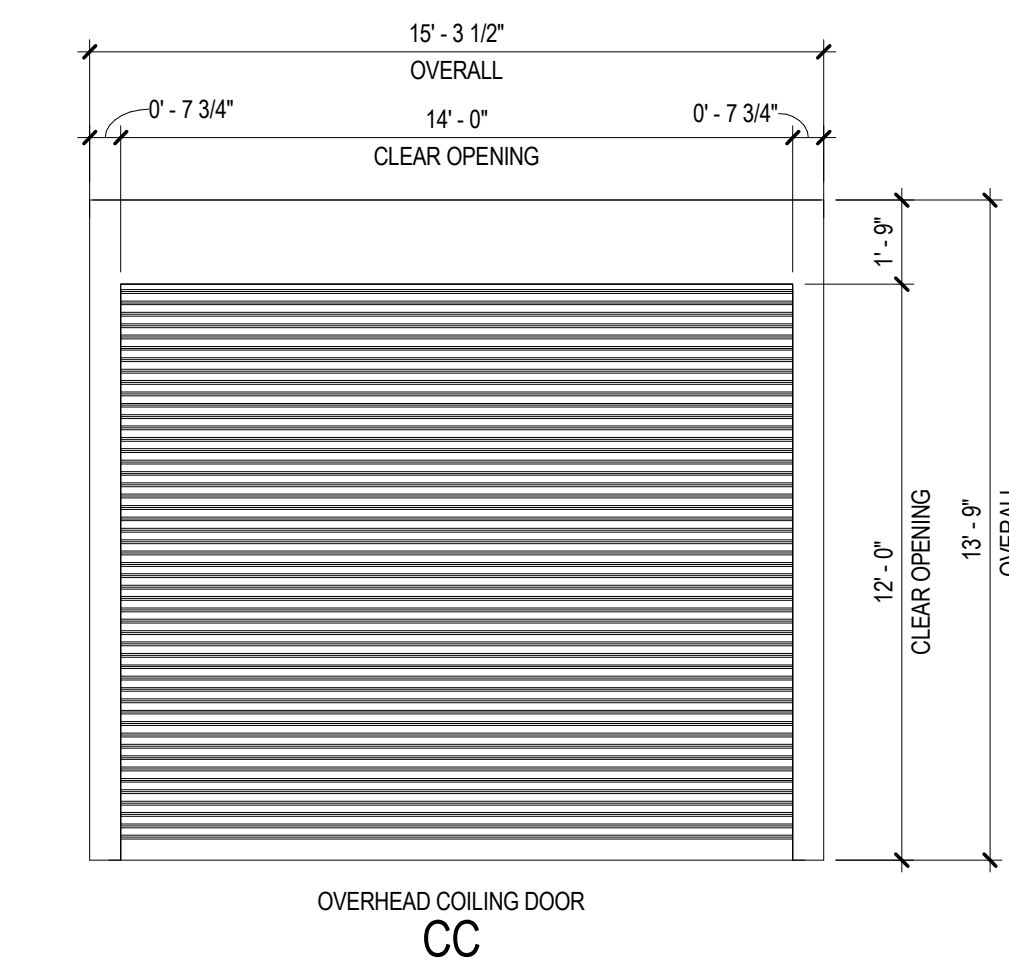
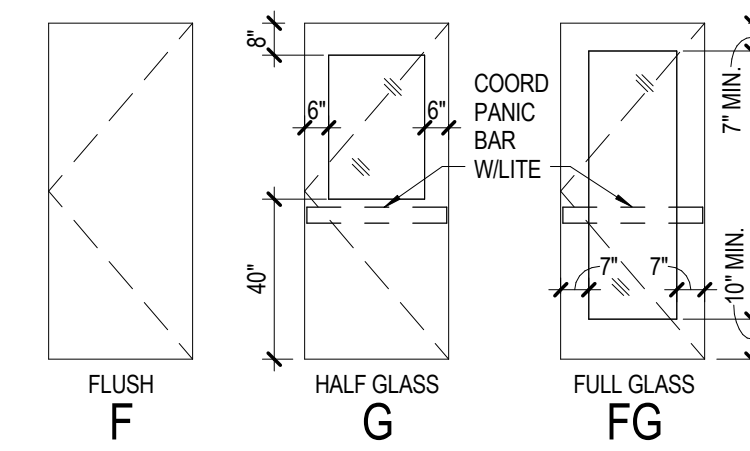
DOOR SCHEDULE GENERAL NOTES

- REFER TO A-77-77 FOR THE GLAZING SCHEDULE.
- REFER TO A-77-77 FOR DOOR HEAD, JAMB AND SILL DETAILS.
- ALL DOORS IN SMOKE RESISTANT PARTITIONS TO HAVE POSITIVE LATCHING.
- FIRE-RATING GLAZING IN DOORS SHALL MEET THE FIRE RATING REQUIREMENT OF THE DOORS TO WHICH THEY ARE INSTALLED.
- ALL DOORS TO HAVE BOXED HEADERS UNLESS STEEL CHANNELS ARE INDICATED IN THE REMARKS COLUMN OF THE DOOR SCHEDULE OR UNLESS OTHERWISE INDICATED BY HEAD DETAIL.
- REFER TO SPEC ##### FOR COILING OVERHEAD DOOR.

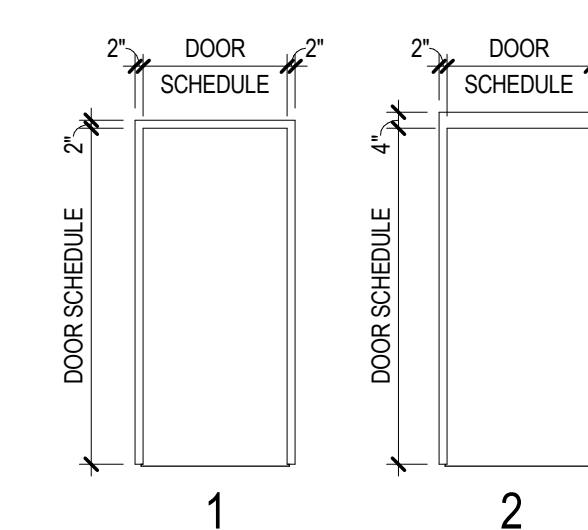
DOOR SCHEDULE ABBREVIATIONS

GENERAL ABBREVIATIONS:	FRAME FUNCTION ABBREVIATIONS:
AL1 ANODIZED ALUMINUM	A RABBETED
AL2 BRONZED ALUMINUM	B DOUBLE EGRESS
BR BALLISTICS RESISTANT HOLLOW METAL DOOR	C CASING
HCWD HOLLOW CORE WOOD	D DOUBLE ACTING
HM HOLLOW METAL	
LI LEAD LINED	
+ REFER TO MANUFACTURER	
PF PREFINISHED	
PH PACKAGE HEIGHT	
PLAM PLASTIC LAMINATE FACED DOOR	
PNT PAINTED FINISH	
PW PACKAGE WIDTH	
SCWD SOLID CORE WOOD	
SF STAINED FINISH	
SO SWING OUT, SIDELIGHT	
SR SMOKE RESISTANT	
SST STAINLESS STEEL FINISH	
SK SWING SLIDE PANEL	

DOOR TYPES



FRAME TYPES



PERKINS + WILL

1001 McKinney
Suite 1300
Houston, TX 77002
1713.366.4000
1713.528.3338
www.perkinswill.com



Professional Engineering Consultants

1263 SW Topoka Blvd.
Topoka, KS 66612

Structural
Walter P. Moore

920 Main St., 10th Floor
Kansas City, MO 64105

MEP/FP

Affiliated Engineers, Inc.
5802 Research Park Blvd.
Madison, WI 53715

LANDSCAPE
Confuence

417 Delaware St.
Kansas City, MO 64108

ASSOCIATE ARCHITECT

Monterita
824 Center
Overland Park, KS 66204

DEVELOPER

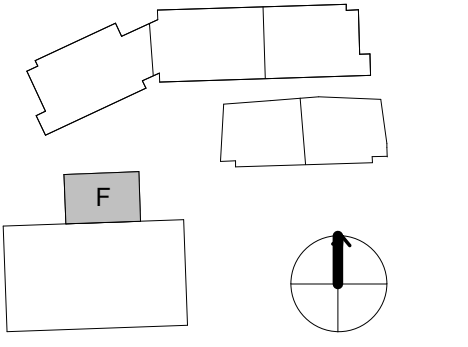
EDGE MOOR
7500 Old Georgetown Road
Bethesda, MD 20814

NOTE: DOCUMENTS ARE INCOMPLETE AND MAY NOT BE USED FOR REGULATORY APPROVAL, PERMITTING, OR CONSTRUCTION PURPOSES.

ISSUE CHART

MARK	ISSUE	DATE
Job Number	185163	
Drawn	Author	
Checked	Checker	
Approved	Approver	

KEY PLAN



Department of Administration
Office of Facilities Design,
Procurement, Construction
& Compliance
800 SW Jackson, Suite 700
Topoka, Kansas 66612-1216
Phone 785-296-8889

INTEGRATED SCIENCE BUILDING AND NEW STUDENT UNION
THE UNIVERSITY OF KANSAS - CENTRAL DISTRICT DEVELOPMENT
1621 Ousdale Rd., Lawrence, KS 66045
BUILDING NUMBER CUP - 299 / 10476
DATE: 11.02.2015 DRAWN BY: Author

DOOR SCHEDULE

A-XXXXXX

6-A62-01

DESIGN DEVELOPMENT

Volume 6
Copyright © 2015 Perkins+Will

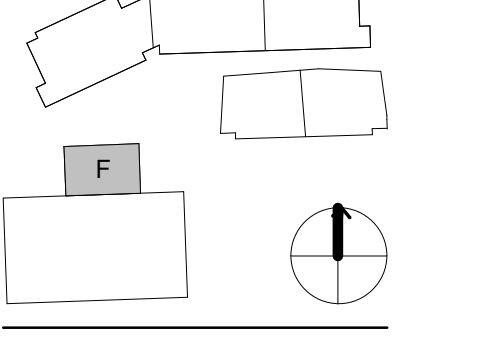
DESIGN DEVELOPMENT 11.02.2015

NOTE: DOCUMENTS ARE
INCOMPLETE AND MAY NOT BE
USED FOR REGULATORY
APPROVAL, PERMITTING, OR
CONSTRUCTION PURPOSES.

ISSUE CHART

MARK	ISSUE	DATE
Job Number	185163	
Drawn	Author	
Checked	Checker	
Approved	Approver	

KEY PLAN



Department of Administration
Office of Facilities Design,
Procurement, Construction,
& Compliance
800 SW Jackson, Suite 700
Topoka, Kansas 66612-1216
Phone 785-296-8889

INTEGRATED SCIENCE BUILDING AND NEW STUDENT UNION
**THE UNIVERSITY OF KANSAS - CENTRAL
DISTRICT DEVELOPMENT**
1621 Ousdale Rd., Lawrence, KS 66045
BUILDING NUMBER CUP - 299 / 10476
DATE: 11.02.2015 DRAWN BY: Author

INTERIOR FINISH PLAN
AND LEGEND

A-XXXXXX

6-A64-01

DESIGN DEVELOPMENT

Volume 6
Copyright © 2015 Perkins+Will

FINISH LEGEND NOTES

- FLOOR:**
- A. ALL FLOOR FINISH TRANSITION SHALL OCCUR AT CENTERLINE OF DOOR WHEN DOOR IS IN CLOSED POSITION.
 - B. REFER TO AX-XX SERIES FOR TRANSITION AND THRESHOLD DETAILS.
 - C. RESILIENT FLOOR TRANSITION COLOR TO MATCH XXX.
 - D. SCHLUTER FINISH TO BE BRUSHED ANODIZED ALUMINUM.
 - E. SOLID SURFACE MATERIAL THRESHOLD COLOR TO BE XXX.
 - F. REFER TO AX-XX SERIES FOR ALL FLOOR PATTERNS.
 - G. REFER TO AX-XX FOR ALL FLOOR TRANSITION DETAILS.
- WALL BASE:**
- A. RESILIENT SHEET FLOORING WITH INTEGRAL COVE BASE SHALL BE 6" A.F.F. WITH ALUMINUM METAL CAP, UNLESS NOTED OTHERWISE.
 - B. WHERE WALL CERAMIC TILE MEETS FLOOR, PROVIDE A WATER RESILIENT SILICONE CAULKING AT JOINT.
- WALL:**
- A. EPOXY PAINT SHALL BE APPLIED TO SURFACES WHERE DESIGNATION PX-B OCCURS THROUGHOUT DRAWINGS.
 - B. DO NOT APPLY WALL COVERING TO INSIDE FACE OF EXTERIOR WALLS, FOR ROOMS ON EXTERIOR PERIMETER OF BUILDING, WHERE ROOMS FINISH TAG INDICATES BOTH PAINT AND WALL COVERING. PAINT SHALL BE APPLIED TO INTERIOR FACE OF EXTERIOR WALLS, WALL COVERING APPLIED TO ALL REMAINING WALLS U.N.O.
 - C. PAINT ALL ELECTRICAL AND ACCESS PANELS TO MATCH ADJACENT WALL COLOR.
- CEILING:**
- A. HORIZONTAL AND VERTICAL SURFACE OF FURR-DOWN TO MATCH ADJACENT WALLS AND CEILING, UNLESS NOTED OTHERWISE.
 - B. REFER TO REFLECTED CEILING PLANS, SERIES AX-XX, FOR ALL CEILING HEIGHTS.
 - C. PAINT ALL ACCESS PANELS IN CEILING TO MATCH ADJACENT CEILING COLOR.
- DOORS/WINDOWS:**
- A. DOOR FINISH TO BE PL1, MATCHING EXISTING CONDITIONS, UNLESS NOTED OTHERWISE.
 - B. INTERIOR HOLLOW METAL DOOR & FRAME, AND INTERIOR SURFACE OF EXTERIOR HOLLOW METAL DOOR & FRAME TO BE PAINTED COLOR PX, UNLESS NOTED OTHERWISE.
 - C. ALL INTERIOR VISION PANEL FRAMES TO BE PAINTED PX, UNLESS NOTED OTHERWISE.
 - D. REFER TO FINISH PLANS, SERIES AX-XX, FOR WINDOW TREATMENTS OTHER THAN WINDOWS WITH INTEGRAL BLINDS, BY SOFT GOODS CONTRACTOR.
 - F. REFER TO DRAWING FOR WINDOW SILL DETAIL, COLOR SHALL BE SSMX.
- MILLWORK:**
- A. SOLID SURFACE INTEGRAL BOWL COLOR SHALL BE SSMX.
- STAIRS:**
- A. STAIR HANDRAIL, STRINGERS, AND RISERS SHALL BE PAINTED COLOR PX.
 - B. STAIR TREADS TO RECEIVE XXX.
- ELEVATORS:**
- A. FLOORING TO BE XXX.
 - B. CABS TO BE XXX.
- ACCESSORIES:**
- A. CURTILE CURTAINS (I.C.) TO BE INSTALLED WITH BOTTOM AT 12" A.F.F. VERIFY CEILING HEIGHT FOR CEILING MOUNTED TRACK CURTAIN TRACK TO BE INSTALLED BY GENERAL CONSTRUCTION CONTRACTOR.
 - B. REFER TO AX-XX SERIES FOR WALL PROTECTION LOCATIONS, REFER TO INTERIOR FINISH LEGEND FOR SPECIFIC PROFILES AND COLORS.
 - C. TOILET PARTITION COLOR TO BE XXX.
 - D. SHOWER CURTAINS TO BE XXX, UNLESS NOTED OTHERWISE.
 - E. SOLID SURFACE SHOWER ENCLOSURE TO BE XXX, UNLESS NOTED OTHERWISE.
 - F. ALL FIRE EXTINGUISHER CABINETS TO BE PAINTED PX.

**INTERIOR FINISH
PLAN LEGEND**

ROOM FINISH TAG

XXX	CEILING FINISH
XXX	WALL FINISH
XXX	WALL BASE FINISH
XXX	FLOOR FINISH

MILLWORK FINISH TAG

XXX	COUNTERTOP
XXX	CABINET FRONTS

* DENOTES MULTIPLE FINISHES, REFER TO REFLECTED CEILING PLANS, FLOOR PATTERN PLANS AND/OR ELEVATIONS FOR INFORMATION.

XXX	FINISH TAG
-----	------------

KEYNOTE	KEYNOTE
---------	---------

ETR	EXISTING TO REMAIN
-----	--------------------

OUT OF SCOPE	OUT OF SCOPE
--------------	--------------

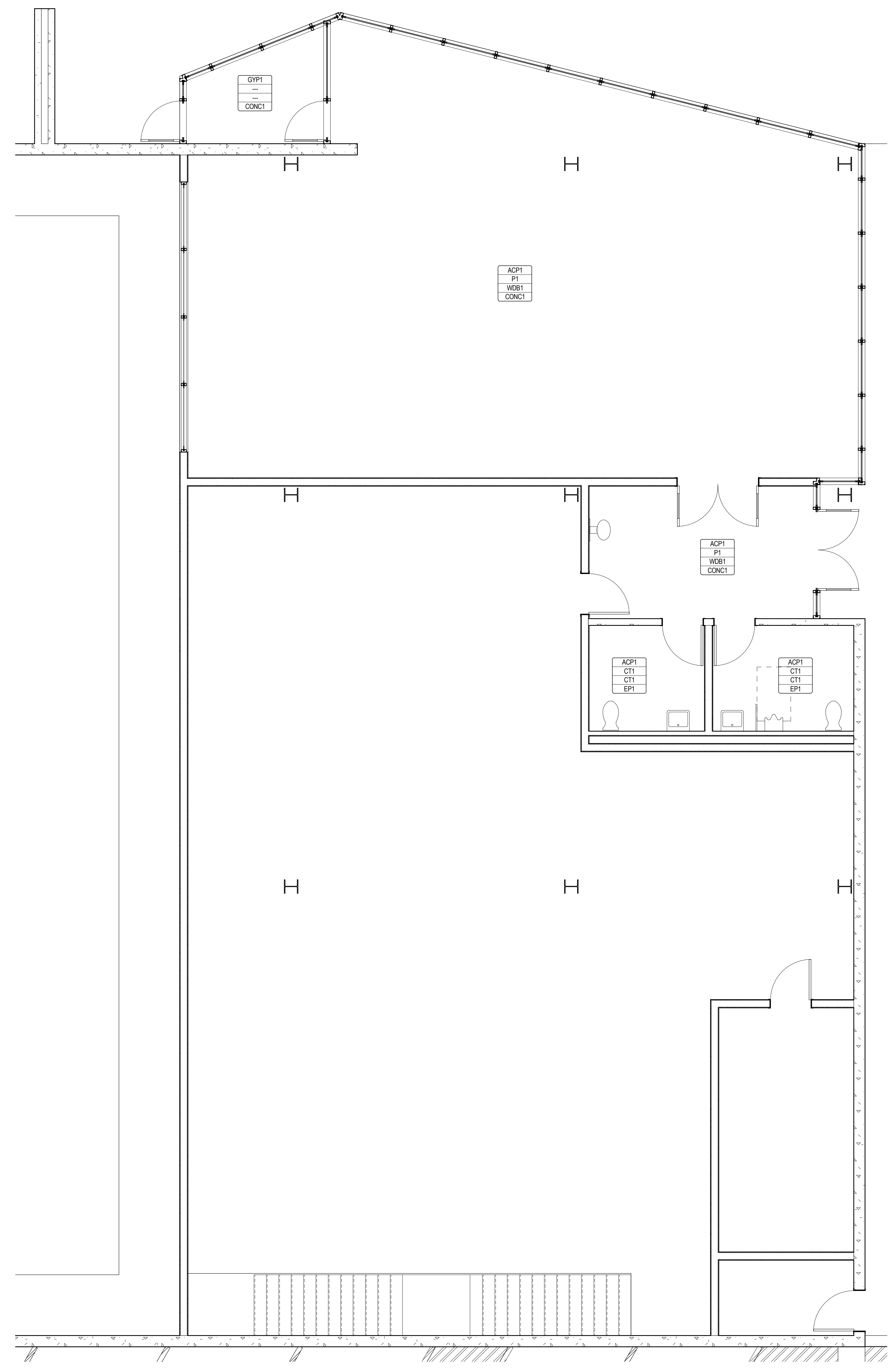
ETR + XXX	MATERIAL TRANSITION TAG
-----------	-------------------------

MATERIAL PATTERN DIRECTION	MATERIAL PATTERN DIRECTION
----------------------------	----------------------------

MATERIAL SEAM	MATERIAL SEAM
---------------	---------------

FINISH LEGEND

CEILING	ACPI	ACOUSTICAL CEILING PANEL
	GYP1	GYPSUM BOARD PAINTED
CONCRETE	CONC1	POLISHED CONCRETE
EPOXY	EP1	EPOXY FLOORING
PANT	P1	PAINT (TBD)
CERAMIC TILE	CT1	CERMIC TILE (TBD)
WOOD BASE	WB1	WOOD BASE



A3 CUP FINISH FLOOR PLAN - LEVEL 02
1/4" = 1'-0"

NOTE: DOCUMENTS ARE
INCOMPLETE AND MAY NOT BE
USED FOR REGULATORY
APPROVAL, PERMITTING, OR
CONSTRUCTION PURPOSES.

ISSUE CHART

NO.	DATE	DESCRIPTION
1	11/02/2015	ISSUE
Job Number #185163		
Drawn		LRB
Checked		CMV
Approved		CMV

KEY PLAN

Department of Administration
Office of Facilities &
Property Management Design,
Construction & Compliance
800 SW Jackson, Suite 1216
Topeka, KS 66612
Phone: 785-296-8869

UNIVERSITY OF KANSAS PARKING GARAGE AND CENTRAL UTILITY PLANT
**THE UNIVERSITY OF KANSAS - CENTRAL
DISTRICT DEVELOPMENT**
1450 Jayhawk Blvd., Lawrence, KS 66045
BUILDING NUMBER 299/10476
DATE: 11.02.2015 DRAWN BY: LRB

FIRE PROTECTION
SYMBOLS AND
ABBREVIATIONS CUP

A-XXXXXX

6-F00-01

DESIGN DEVELOPMENT

FIRE PROTECTION SYMBOLS AND ABBREVIATIONS

NOTE: SYMBOLS AND ABBREVIATIONS INDICATED HERE AND NOT USED IN THE CONTRACT DOCUMENTS DO NOT
APPLY TO THIS PROJECT. ADDITIONAL SYMBOLS MAY BE INDICATED IN THE CONTRACT DOCUMENTS.

GENERAL SYMBOLS	
—XF—	EXISTING FIRE SUPPLY
—F—	FIRE SUPPLY
—XSPR—	EXISTING SPRINKLER PIPE
—SPR—	SPRINKLER PIPE
—DSPR—	DRY SPRINKLER PIPE
—GALV—	GALVANIZED SPRINKLER PIPE
—W—	WATER SERVICE
↳	ELBOW DOWN
○	ELBOW UP
↳	TEE DOWN
○	TEE UP
— —	PIPE CAP OR FLUSHING CONNECTION
— —	PIPE SLEEVE
— —	CONCENTRIC REDUCER
— —	ECCENTRIC REDUCER
— —	SHUTOFF VALVE (SUPERVISED)
— —	SUPERVISED BUTTERFLY VALVE
— —	SUPERVISED OS&Y VALVE
— —	VALVE IN VERTICAL
— —	CHECK VALVE
— —	ALARM CHECK VALVE
— —	DRY PIPE VALVE ASSEMBLY
— —	PREACTION VALVE ASSEMBLY
— —	DELUGE VALVE ASSEMBLY
— —	SPRINKLER ZONE CONTROL VALVE ASSEMBLY
— —	FLOW SWITCH
— —	PRESSURE GAUGE (WITH VALVE)
— —	DOUBLE CHECK BACKFLOW PREVENTER (DCBP)
— —	REDUCED PRESSURE ZONE BACKFLOW PREVENTER (RPBP)
— —	HORN/STROBE
— —	FIRE ALARM BELL
— —	SMOKE DETECTOR IONIZATION TYPE
— —	SMOKE DETECTOR PHOTOELECTRIC TYPE
— —	HEAT DETECTOR
— —	AIR-ASPIRATING SMOKE DETECTOR
#	SPRINKLER HEAD REFER TO DRAWING SPRINKLER HEAD LEGEND FOR TYPE
#	EXISTING SPRINKLER HEAD CEILING MOUNTED
#	SIDEWALL SPRINKLER HEAD
▽	EXISTING SIDEWALL SPRINKLER HEAD
— —	FIRE DEPARTMENT CONNECTION
— —	FIRE PUMP TEST HEADER
— —	STORZ CONNECTION
— —	FIRE DEPARTMENT VALVE
— —	ROOFTOP TEST HEADER
— —	FIRE HOSE CABINET
— —	FIRE HOSE RACK
— —	FIRE VALVE CABINET
— —	EXISTING VALVE CABINET
— —	INSPECTOR'S TEST ASSEMBLY
— —	INSPECTOR'S TEST AND DRAIN ASSEMBLY
— —	SUPERVISED POST INDICATOR VALVE (PIV)
— —	PUMP (FLOW DIAGRAM)
— —	PUMP (FLOOR PLAN)
— —	PIPE HANGER
— —	SPRINKLER ZONE BOUNDARY
— —	HYDRAULIC CALCULATION DESIGN AREA
— —	DEMOLITION OF PIPING, DEVICE, ETC.
— —	SPRINKLER PIPE TEXT (TOP INDICATES PIPE SIZE (BOTTOM INDICATES CENTER TO CENTER PIPE LENGTH))

REFERENCE SYMBOLS			
REFER SHT #	GENERAL REFERENCE DESIGNATES SHEET NUMBER	NAME #	EQUIPMENT NAME AND NUMBER
DET # SHT #	DETAIL REFERENCE TOP DESIGNATES DETAIL NUMBER BOTTOM DESIGNATES SHEET NUMBER	#	HYDRAULIC REFERENCE POINT
#	SECTION REFERENCE TOP DESIGNATES SECTION NUMBER BOTTOM DESIGNATES SHEET NUMBER	#	ROOM NUMBER
+	ELEVATION SYMBOL	#	SHEET KEYNOTE NUMBER
+	NEW CONNECTION TO EXISTING	#	REVISION NUMBER
		#	CONSTRUCTION BULLETIN NUMBER

ABBREVIATIONS			
AC	AIR COMPRESSOR	MAX	MAXIMUM
ACC	ACCESS	MEZZ	MEZZANINE
ACV	ALARM CHECK VALVE	MFR	MANUFACTURER
ADJ	ADJUSTABLE	MN	MINIMUM/MINUTE
AFF	ABOVE FINISHED FLOOR	MISC	MISCELLANEOUS
ALT	ALTERNATE	MTD	MOUNTED
AP	ACCESS PANEL	MTG	MOUNTING
APPROX	APPROXIMATE		
ARCH	ARCHITECTURAL	NFPA	NATIONAL FIRE PROTECTION ASSOCIATION
ASSY	ASSEMBLY	NO	NUMBER
ATS	AUTOMATIC TRANSFER SWITCH	NOM	NOMINAL
BLDG	BUILDING	NPT	NATIONAL PIPE THREAD
BOP	BOTTOM OF PIPE	NTS	NOT TO SCALE
BOT	BOTTOM		
BTWN	BETWEEN	OC	ON CENTER
CFCI	CONTRACTOR FURNISHED CONTRACTOR INSTALLED	OD	OUTSIDE DIAMETER
CL	CENTERLINE	OFCI	OWNER FURNISHED CONTRACTOR INSTALLED
CLG	CEILING	OFOI	OWNER FURNISHED OWNER INSTALLED
CONN	CONNECTION/CONNECT	PIV	POST INDICATOR VALVE
CONTR	CONTRACTOR	PLBG	PLUMBING
CORR	CORRIDOR	PRESS	PRESSURE
CU	COPPER	PRV	PRESSURE REDUCING VALVE
D	DEPTH/DRAIN LINE	PSF	POUNDS PER SQUARE FOOT
DCBP	DOUBLE CHECK BACKFLOW PREVENTER	PSI	POUNDS PER SQUARE INCH
DOB	DOUBLE DETECTOR BACKFLOW PREVENTER	PSIG	POUNDS PER SQUARE INCH GAUGE
DET	DETAIL	RAD	RADIUS
DIA	DIAMETER	REC	RECESSED
DIM	DIMENSION	REQD	REQUIRED
DN	DOWN	RI	ROUGH-IN
DSPR	DRY SPRINKLER PIPE	RPM	REVOLUTIONS PER MINUTE
DWG	DRAWING	RPBP	REDUCED PRESSURE ZONE BACKFLOW PREVENTER
EA	EACH	RV	RELIEF VALVE
ELEV	ELEVATION	SCH	SCHEDULE
EQUIP	EQUIPMENT	SHT	SHEET
ETR	EXISTING TO REMAIN	SPEC	SPECIFICATION
EXT	EXTERIOR	SPR	SPRINKLER
F	FIRE SUPPLY	SQ	SQUARE
FACP	FIRE ALARM CONTROL PANEL	S/S	STAINLESS STEEL
FDC	FIRE DEPARTMENT CONNECTION	STRU	STRUCTURAL/STRUCTURE
FDV	FIRE DEPARTMENT VALVE	TEMP	TEMPERATURE
FHC	FIRE HOSE CABINET	TC	TEST CELL
FHR	FIRE HOSE RACK	TOB	TOP OF BEAM
FLR	FLOOR	TOD	TOP OF DECK
FMG	FACTORY MUTUAL GLOBAL	TOJ	TOP OF JOIST
FPC	FIRE PUMP CONTROLLER	TOS	TOP OF SLAB/TOP OF STEEL
FPTH	FIRE PUMP TEST HEADER	TYP	TYPICAL
FS	FLOW SWITCH	UBC	UNIFORM BUILDING CODE
FT	FEET	UFC	UNIFORM FIRE CODE
FTG	FOOTING	UNO	UNLESS NOTED OTHERWISE
FVC	FIRE VALVE CABINET	V	VALVE
GA	GAUGE	VEL	VELOCITY
GAL	GALLON	VESDA	VERY EARLY SMOKE DETECTION APPARATUS
GALV	GALVANIZED	VOL	VOLUME
GPM	GALLONS PER MINUTE	W	WIDTH
HD	HUB DRAIN	WI	WITH
IBC	INTERNATIONAL BUILDING CODE	W/O	WITHOUT
ID	INSIDE DIAMETER	X	EXISTING
IE	INVERT ELEVATION		
IFC	INTERNATIONAL FIRE CODE		
IN	INCHES		
JP	JOCKEY PUMP		
JPC	JOCKEY PUMP CONTROLLER		
L	LENGTH		
LBS	POUNDS		