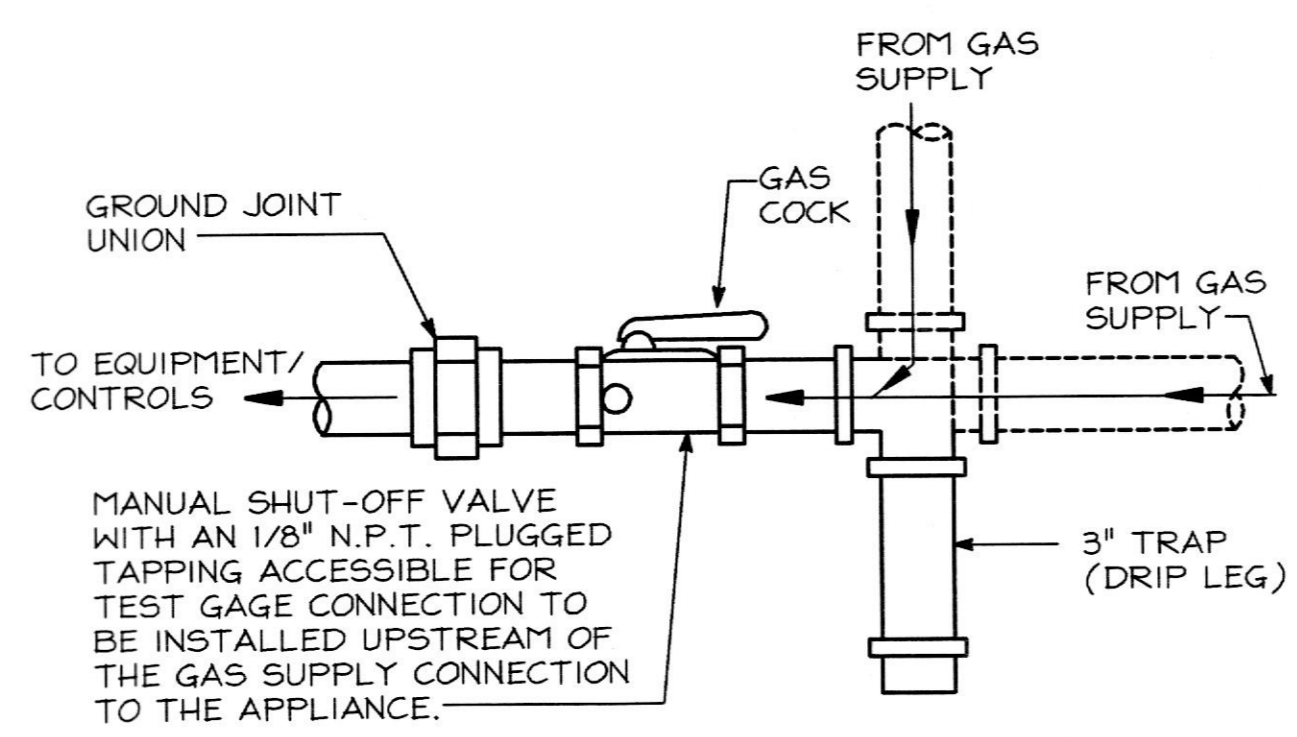
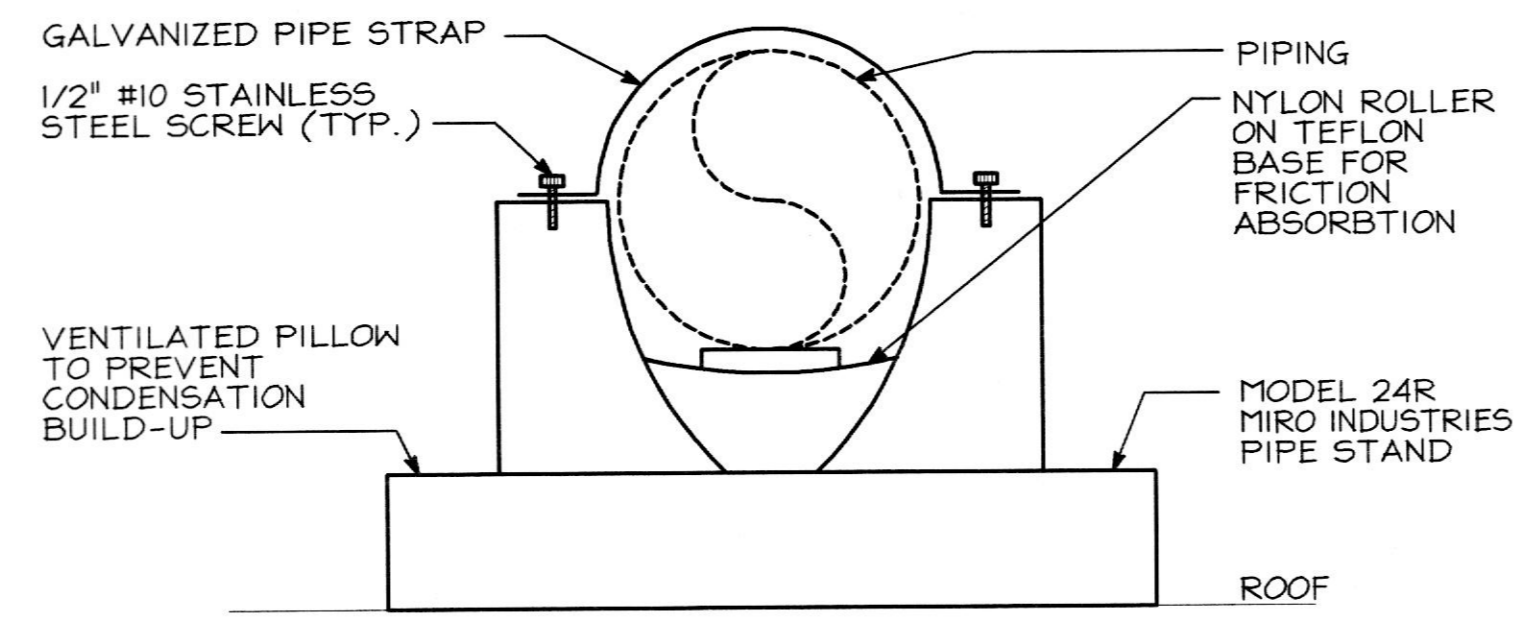


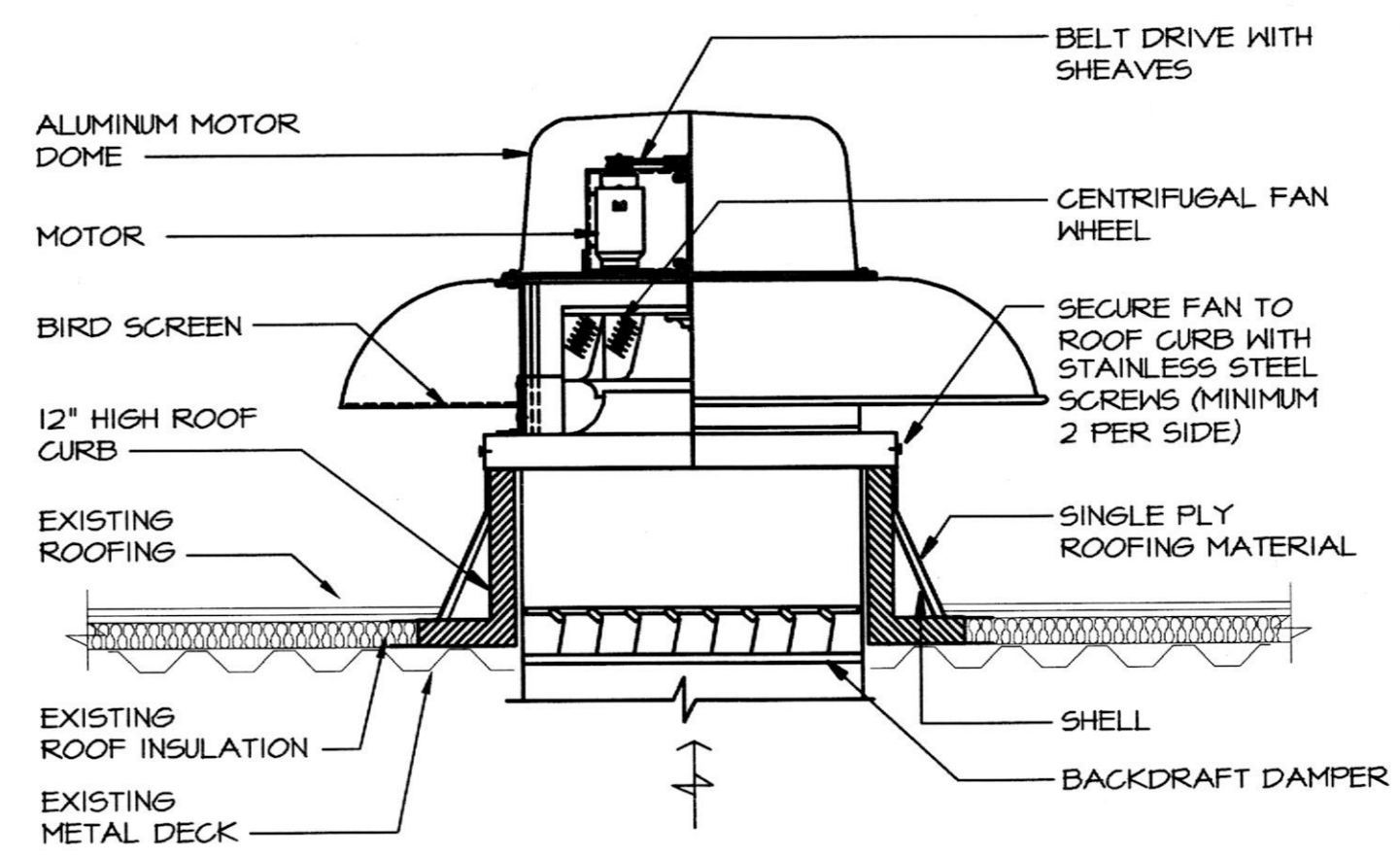
ROOFTOP UNIT CONDENSATE TRAP DETAIL
NO SCALE



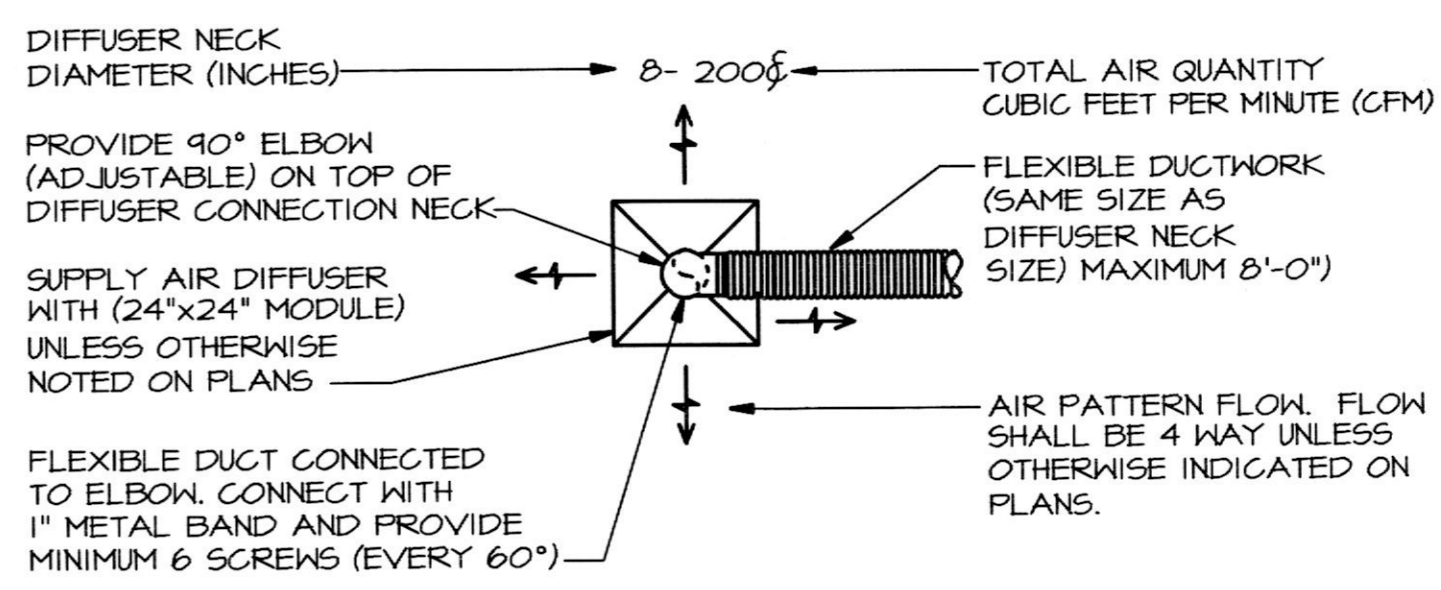
GAS CONNECTION DETAIL
NO SCALE



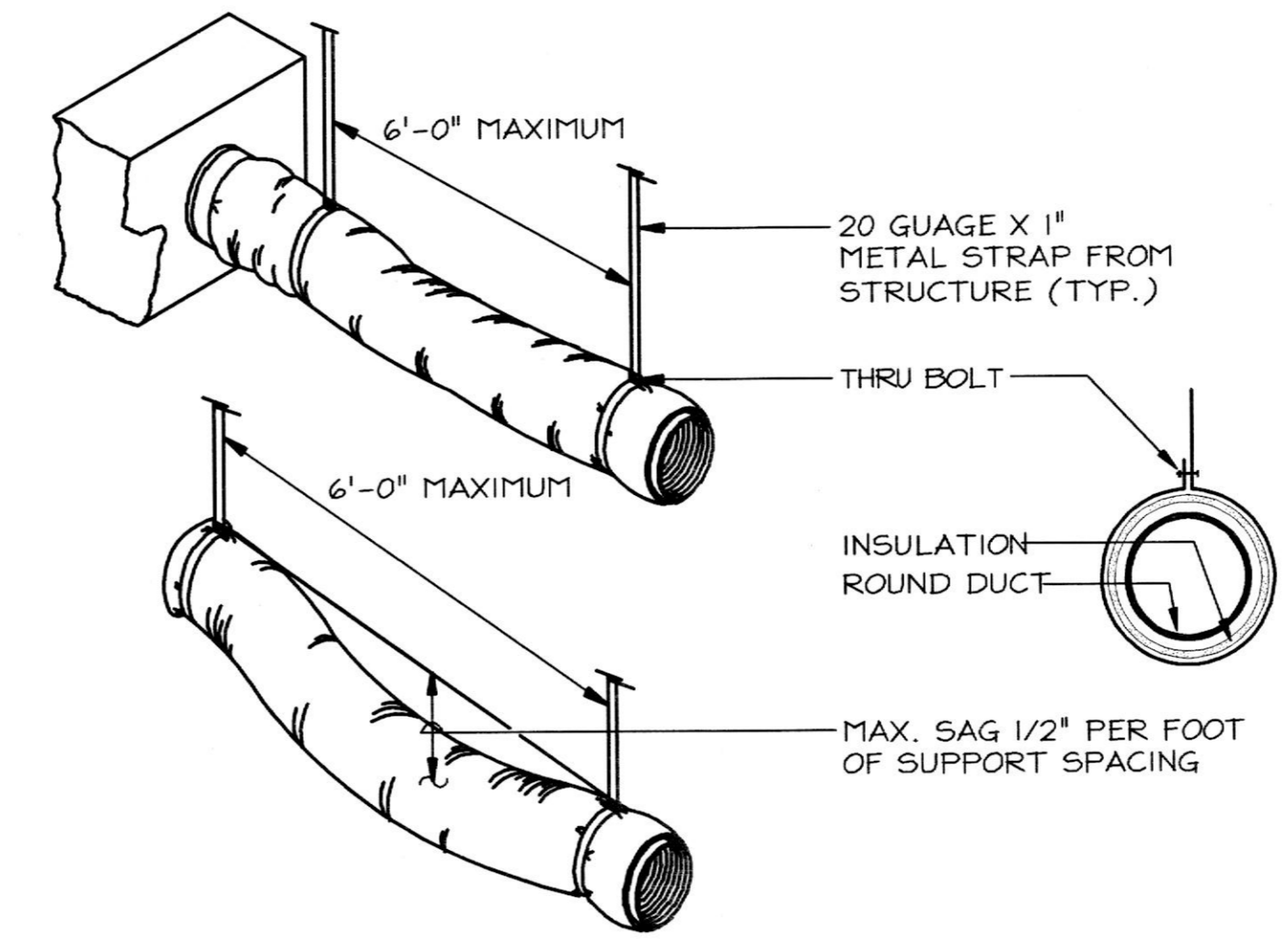
PILLOW BLOCK PIPESTAND DETAIL
NO SCALE



ROOF MOUNTED EXHAUST FAN DETAIL
NO SCALE

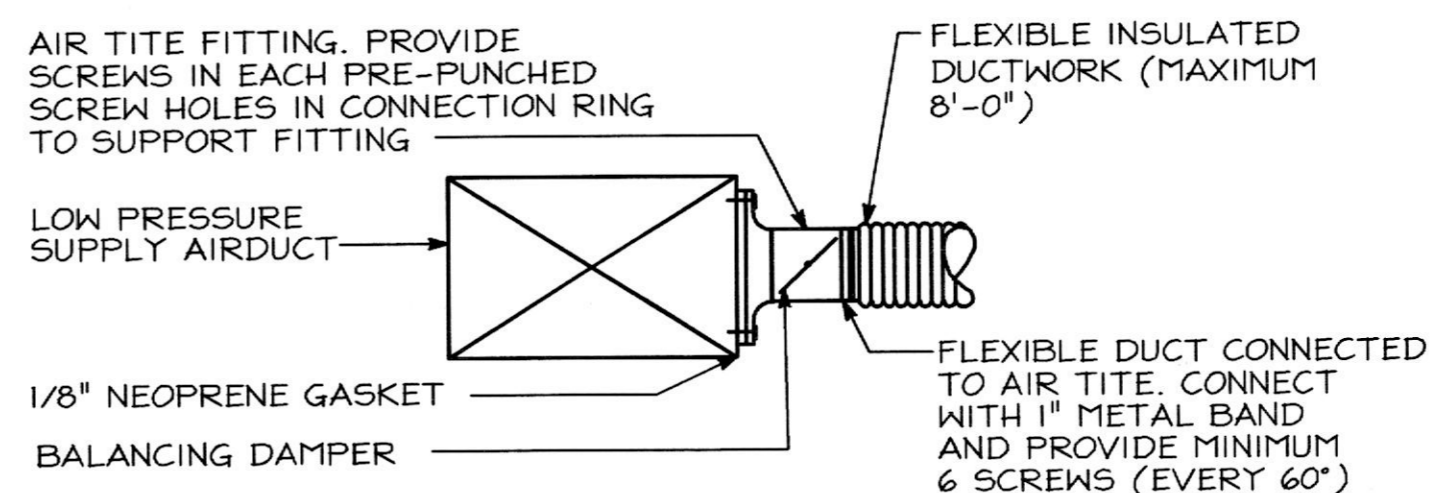


SUPPLY AIR DIFFUSER KEY
NO SCALE



FLEXIBLE DUCT RUN-OUT SUPPORT DETAIL
NO SCALE

- NOTES:
- 1) FLEXIBLE DUCT SHOULD EXTEND STRAIGHT FOR SEVERAL INCHES FROM RECTANGULAR DUCT CONNECTION BEFORE BENDING.
 - 2) FLEXIBLE DUCT SHOULD NOT EXCEED 6'-0" IN LENGTH. USE RIGID ROUND DUCTWORK WHEN ROUNDOUTS EXCEED

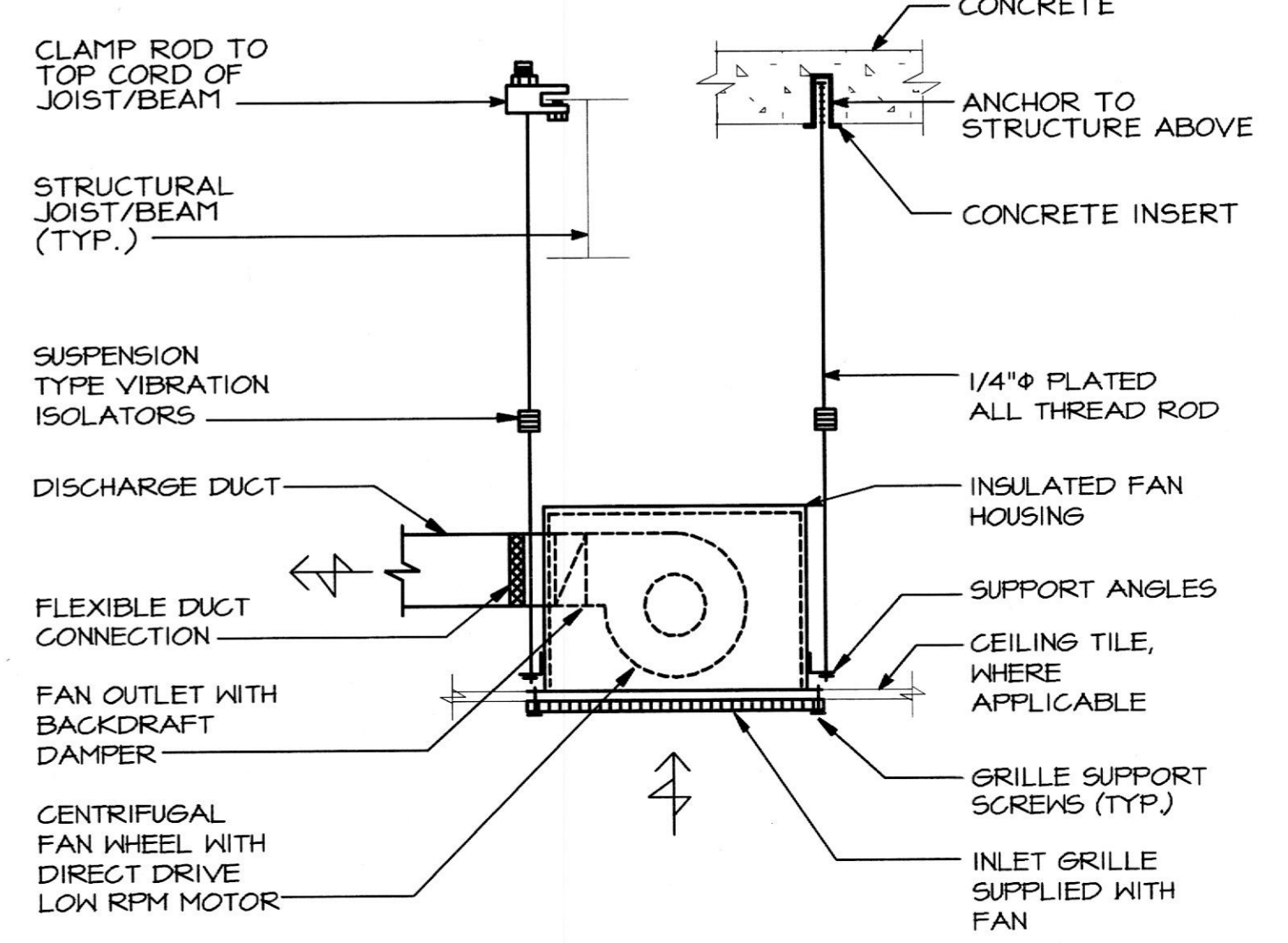


AIR TITE FITTING DETAIL
NO SCALE

AIR TITE SIZE CHART

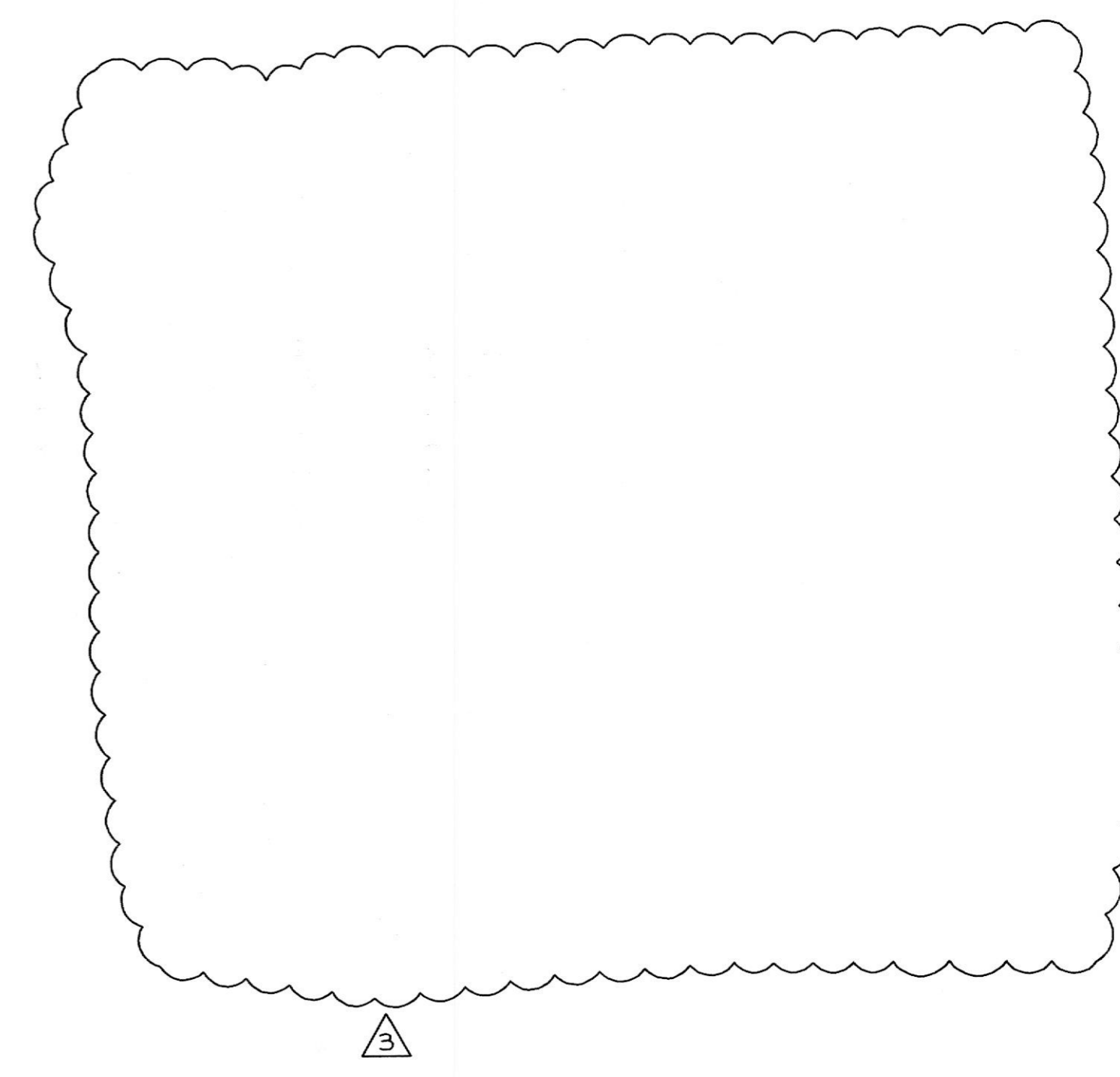
DUCTSIZE	CONNECTION RING	DUCTSIZE	CONNECTION RING
5"	8"	9"	12"
6"	9"	10"	13"
7"	10"	11"	14"
8"	11"	12"	15"

- NOTE:
- 1) WHERE CONNECTION RING SIZE IS LARGER THAN SUPPLY DUCT, THEN CONNECTION RING SHALL BE CRIMPED OVER DUCT AND CONNECTED, SCREWED AND SEALED ON TOP AND BOTTOM OF SUPPLY DUCT.



CEILING MOUNTED EXHAUST FAN DETAIL
NO SCALE

- NOTE:
- 1) PROVIDE VARIABLE SPEED SWITCH ON THE SIDE OF THE CASING FOR FINAL AIR BALANCE.



ISSUED FOR
BUILDING PERMIT

To the best of my knowledge, belief and professional judgment, these plans and specifications, are in compliance with Section 101.4.4 of the New York City Energy Conservation Code (NYCECC).

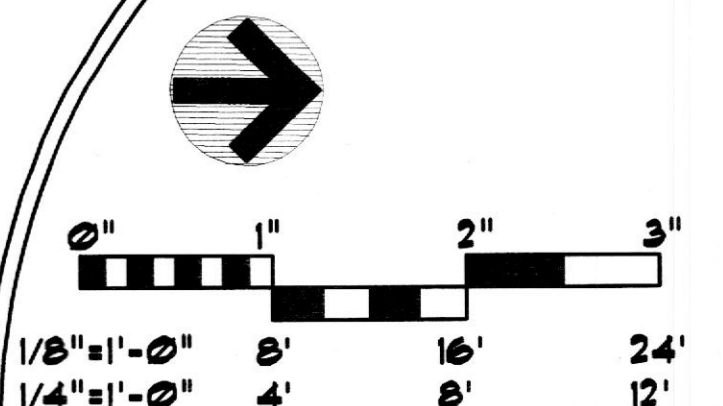
Richard J. Stern, P.E.

2741 Finance Road
Folsom, PA 17322
Phone: 717-991-6026

TENANT RENOVATIONS FOR:
Access Center
1733 Eastchester Road
Bronx, NY 10461

Lifeline
Vascular Access

InSync
ARCHITECTURAL DESIGNS, INC.
128 Old Pymville Road Whiteford, MD 21160
Office 410-492-8068 Fax 410-492-8066



DETAILS

REV#	DATE	REVISIONS
1	7/18/13	OWNER'S REVISION
3	1/5/14	CONSTRUCTION REVISIONS

DRAWING NO. M-104.00
SHEET 4 OF 9
DATE DRAWN BY 4/10/13 DLI
JOB NUMBER CHECKED BY 11206 DLI