

CONSTRUCTION NOTES

27 CONSTRUCTION NOTE DESIGNATION

ALL INTERIOR FINISHES SHALL COMPLY WITH THE CLASSIFICATION REQUIREMENTS OUTLINED IN APPLICABLE SECTIONS OF THE INTERNATIONAL BUILDING CODE FOR THE AREAS BEING INSTALLED.

OWNER WILL PROVIDE APPROXIMATE 50 VARIOUS TYPES OF INTERIOR SIGNAGE DEVICES (INCLUDING SIGNAGE FOR TOILETS), WHICH ARE TO BE INSTALLED BY THE CONTRACTOR. CONTRACTOR SHALL COORDINATE THE DELIVERY AND INSTALLATION WITH OWNER.

- INSTALL THE FOLLOWING OWNER PROVIDED APPLIANCES. COORDINATE DELIVERY OF ITEMS ON BEHALF OF THE OWNER AND VERIFY EACH APPLIANCE IS OPERATING PROPERLY. FOR TV LOCATIONS, CONTRACTOR TO PROVIDE WALL MOUNTING BRACKET(S) (BLACK), MOUNT HIGH ON THE WALL WHERE INDICATED. COORDINATE TYPE AND EXACT LOCATION WITH OWNER. PROVIDE BLOCKING FOR WALL BRACKET.
1a FULL SIZE REFRIGERATOR
1b DISHWASHER
1c MICROWAVE. EXTEND BOTTOM OF MICROWAVE SHELF OUT 2" PAST FACE OF WALL CABINETS. MIN INTERIOR SHELF DEPTH IS 16". COORDINATE PLACEMENT OF ELECTRICAL OUTLET FOR MICROWAVE SO THAT IT IS LOCATED IN THE UPPER CORNER AND DOES NOT OBSTRUCT THE MICROWAVE.
1d UNDER COUNTER REFRIGERATOR.
1e COORDINATE INSTALLATION OF OWNER PROVIDED CEILING MOUNTED PROJECTOR. PROVIDE OUTLET ABOVE CEILING AND SUPPORT FOR UNIT.
1f WALL MOUNTED TV (SEE WALL BRACKET ABOVE)

- NURSE CALL SYSTEM. ALL COMPONENTS SHALL BE BY CORNELL COMMUNICATIONS - ALTERNATE MANUFACTURERS WILL NOT BE ACCEPTABLE. INSTALLATION OF ALL COMPONENTS SHALL BE IN ACCORDANCE WITH MANUFACTURER'S RECOMMENDATIONS AND STANDARD DETAILS. INSTALL SYSTEM RECOMMENDATION: 220V/24V CORNELL P-12214 ABOVE CEILING IN THE AREA OF NURSES STATION WITH LINE SIDE DISCONNECT SWITCH. THE FOLLOWING ADDITIONAL COMPONENTS ARE TO BE PROVIDED AT THE DESIGNATED LOCATIONS.
2a WALL MOUNTED CALL SWITCH ACTIVATED BY PULL ON CHORD - CORNELL E-114-3. MOUNT 4" FROM CENTER LINE TO FINISH FLOOR. PROVIDE ASSOCIATED SINGLE BULB EMERGENCY CALL LIGHT - CORNELL L-101 WHITE. TO BE LOCATED OVER DOOR INTO ROOM CONTAINING THE CORRESPONDING CALL SWITCH. LOCATE SO THAT CENTER LINE OF PULL BOX IS 3" PAST OF THE FRONT EDGE OF TOILET.
2b WALL MOUNTED ENUNCIATOR STATION - CORNELL 1-4003 WHERE 3 OR FEWER INDICATORS ARE REQUIRED OR CORNELL 1-4006 WHERE 4-6 INDICATORS ARE REQUIRED. REFER TO ELECTRICAL PLANS.

- PROVIDE THE FOLLOWING ACCESSORY ITEMS. INSTALL PER MANUFACTURER'S RECOMMENDATIONS.
3a COAT HOOK EQUAL TO 914 BY BRADLEY TO BE MOUNTED ON THE ROOM SIDE OF DOOR, IN CENTER OF DOOR AT A HEIGHT OF 4'-0" AFF.
3b PAPER TOWEL DISPENSER EQUAL TO MODEL 252 BY BRADLEY LOCATED ON WALL ADJACENT TO SINK. MOUNT UNIT 3'-5" FROM WALL. MOUNT TOP OF UNIT CLOSE TO UNDERSIDE OF WALL CAP (TO ALLOW UNIT TO OPEN). AT COUNTERTOP LOCATIONS, MOUNT ON SIDE WALL WHERE APPLICABLE. CENTER UNIT VERTICALLY BETWEEN BOTTOM OF WALL CABINETS AND TOP OF SPLASH. COORDINATE EXACT PLACEMENT WITH OWNER.
3c MOP AND BROOM HOLDER - EQUAL TO TYPE 9953 BY BRADLEY. MOUNT AT 5'-0" AFF.
3d 8" W x 34" L STAINLESS STEEL UTILITY SHELF WITH BROOM HOLDERS AND RAG HOOKS - EQUAL TO TYPE 9933 BY BRADLEY. MOUNT AT 5'-0" AFF.
3e 8" W x 24" L STAINLESS STEEL SHELF - EQUAL TO TYPE 758-24 BY BRADLEY. MOUNT AT 5'-0" AFF.
3f PAPER TOWEL DISPENSER EQUAL TO MODEL 250-15 BY BRADLEY LOCATED ON WALL ADJACENT TO SINK. MOUNT UNIT 3'-5" FROM WALL TO CENTER OF DISPENSER AND BOTTOM OF UNIT SHALL BE 3'-11" AFF OR DIRECTLY ABOVE THE FRP ON WALLS WITH FRP.

- PROVIDE THE FOLLOWING PLASTIC LAMINATE SHELVES, WALL CAPS AND SIMILAR ITEMS. LAMINATE COLOR SHALL BE PL-1 UNLESS NOTED OTHERWISE.
4a PLAS LAMINATE WINDOW SILL. PLAS LAM PL-1 TO MATCH WALL CAPS.
4b REFER TO DETAILS 9DIA5, 9FIA5 AND 9FIA5 FOR TYPICAL LOW WALL DETAILS AND PLAS LAM WALL CAP. OUTSIDE CORNERS OF WALL CAP TO HAVE RADIUS CORNERS AND EDGE SHALL BE MM PVC TO MATCH LAMINATE EQUAL TO DOLKEN 'WOODTAPE' (SEE INTERIOR FINISH SCHEDULE FOR COLOR) - TYPICAL THROUGHOUT TREATMENT FLOOR.
4c PLAS LAMINATE SHELF WITH COAT/HAT HOOKS. SEE DETAILS ON SHEET A7.
4d 12" X 12" VERTICAL PIPE CHASE CABINET (15" DEEP AT 'SIM'). CABINET TO RUN FULL HEIGHT FROM TOP OF CHASE CABINET TO CEILING AND SHALL BE OPEN AT TOP AND BOTTOM AS REQUIRED TO INSTALL PIPING AND ELECTRICAL LINES INTO CHASE CABINET. CHASE CABINET FINISH TO MATCH VERTICAL FACE OF CHASE CABINETS. REFER TO DETAIL 7FIA5 FOR CASEWORK DETAIL AND DRAWING W11 FOR PIPING REQUIREMENTS. INCLUDING LONG SWEEP 'BOYS' AT ALL BENDS.
4e S4FCO 3 HOOK COAT RACK MOUNTED TO WALL - ITEM NUMBER 4161. MOUNT TOP OF HOOK AT 5'-0" AFF. (COORDINATE MOUNTING HEIGHT (INCLUDING BACK BLOCKING) WITH OWNER).

- PROVIDE WALL PROTECTION. REFER TO WALL FINISH TYPES ON THE ROOM FINISH SCHEDULE ON SHEET A1. TYPICAL WALL PROTECTION PANELS TO BE INSTALLED WITH TOP AT FINISH FLOOR AND PER THE REQUIREMENTS SHOWN IN DETAIL TWO ON SHEET A2.1. CAULK JOINT BETWEEN BASE AND FRP. INSTALL VERTICAL DIVIDER BARS, TOP HORIZONTAL TRIM AND INSIDE CORNER TRIM PIECES MANUFACTURED BY WALL PANEL MANUFACTURE TO MATCH PANELS. OUTSIDE CORNER JOINTS BETWEEN HORIZONTAL AND VERTICAL EDGE TRIM PIECES SHALL BE MITERED. PANELS AND TRIM SHALL BE INSTALLED PER MANUFACTURER'S RECOMMENDATIONS AND STANDARD DETAILS. REFER TO ROOM FINISH SCHEDULE FOR MATERIAL AND COLOR SELECTIONS IN EACH AREA. REFER TO THE FOLLOWING SUFFIX FOR ADDITIONAL REQUIREMENTS.
5a FULL HEIGHT WALL PROTECTION PANELS AROUND PERIMETER OF ROOM. REFER TO DETAIL ONE ON SHEET A2 FOR WALL DETAILS. CAULK AT TOP OF FLOOR BASE. WHERE APPLICABLE REFER TO CONSTRUCTION NOTE #35 FOR DEN'S GLASS SHEATHING AT LOWER PORTION OF WALL.
5b 51 1/2" AFF AND PER THE REQUIREMENTS SHOWN ABOVE. IT IS THE INTENT THAT THIS WANSICOT / WALL PROTECTION BE CONTINUOUS ALONG WALLS BETWEEN NOTES.
5c WANSICOT / WALL PROTECTION TO UNDERSIDE OF WALL CAP OR WINDOW SILL. INSTALL WITH BOTTOM PER DETAIL TWO ON SHEET A2.1. INSTALL WITH FACTORY EDGE AGAINST WALL CAP.
5d WALL PROTECTION ABOVE BACKSPLASH TO UNDERSIDE OF WALL CABINETS. CAULK JOINTS BETWEEN WALL PROTECTION AND PLAS LAMINATE.
5e WALL PROTECTION OVER WALL BELOW PROCESS PIPING CABINET (SEE DETAILS 3DIA7 AND 3FIA7). PROVIDE TRIM CAP AT TOP OF PANEL UP AGAINST BOTTOM OF CABINET AND HOLD BOTTOM OF PANEL 1/2" ABOVE FLOOR. COVER LOWER PORTION OF PANEL WITH FINISH BASE.

- PROVIDE THE FOLLOWING CORNER GUARDS BY IN PRO CORPORATION AT SUFFIX LOCATIONS INDICATED. COLOR OF CORNER GUARDS PER ROOM FINISH SCHEDULE. INSTALL PER DETAIL TWO ON SHEET A2.1 AND MANUFACTURER'S RECOMMENDATIONS WITH ALL ACCESSORIES REQUIRED FOR A COMPLETE INSTALLATION.
6a PC SERIES 160 CORNER GUARDS (135 DEGREE AS REQUIRED) HIGH IMPACT 2 1/2" X 12 1/2" WALL PROTECTION SYSTEMS AT LOCATIONS INDICATED. UNITS SHALL BE 480 LONG, MOUNTED AT TOP OF WALL BASE.
6b SIMILAR TO CORNER GUARD UNITS ABOVE WITH HIGH-IMPACT FILLER SHEET FOR PARTITION END CAP.

- NURSE CALL SYSTEM. ALL COMPONENTS SHALL BE BY CORNELL COMMUNICATIONS - ALTERNATE MANUFACTURERS WILL NOT BE ACCEPTABLE. INSTALLATION OF ALL COMPONENTS SHALL BE IN ACCORDANCE WITH MANUFACTURER'S RECOMMENDATIONS AND STANDARD DETAILS. INSTALL SYSTEM RECOMMENDATION: 220V/24V CORNELL P-12214 ABOVE CEILING IN THE AREA OF NURSES STATION WITH LINE SIDE DISCONNECT SWITCH. THE FOLLOWING ADDITIONAL COMPONENTS ARE TO BE PROVIDED AT THE DESIGNATED LOCATIONS.
2a WALL MOUNTED CALL SWITCH ACTIVATED BY PULL ON CHORD - CORNELL E-114-3. MOUNT 4" FROM CENTER LINE TO FINISH FLOOR. PROVIDE ASSOCIATED SINGLE BULB EMERGENCY CALL LIGHT - CORNELL L-101 WHITE. TO BE LOCATED OVER DOOR INTO ROOM CONTAINING THE CORRESPONDING CALL SWITCH. LOCATE SO THAT CENTER LINE OF PULL BOX IS 3" PAST OF THE FRONT EDGE OF TOILET.
2b WALL MOUNTED ENUNCIATOR STATION - CORNELL 1-4003 WHERE 3 OR FEWER INDICATORS ARE REQUIRED OR CORNELL 1-4006 WHERE 4-6 INDICATORS ARE REQUIRED. REFER TO ELECTRICAL PLANS.
3 PROVIDE THE FOLLOWING ACCESSORY ITEMS. INSTALL PER MANUFACTURER'S RECOMMENDATIONS.
3a COAT HOOK EQUAL TO 914 BY BRADLEY TO BE MOUNTED ON THE ROOM SIDE OF DOOR, IN CENTER OF DOOR AT A HEIGHT OF 4'-0" AFF.
3b PAPER TOWEL DISPENSER EQUAL TO MODEL 252 BY BRADLEY LOCATED ON WALL ADJACENT TO SINK. MOUNT UNIT 3'-5" FROM WALL. MOUNT TOP OF UNIT CLOSE TO UNDERSIDE OF WALL CAP (TO ALLOW UNIT TO OPEN). AT COUNTERTOP LOCATIONS, MOUNT ON SIDE WALL WHERE APPLICABLE. CENTER UNIT VERTICALLY BETWEEN BOTTOM OF WALL CABINETS AND TOP OF SPLASH. COORDINATE EXACT PLACEMENT WITH OWNER.
3c MOP AND BROOM HOLDER - EQUAL TO TYPE 9953 BY BRADLEY. MOUNT AT 5'-0" AFF.
3d 8" W x 34" L STAINLESS STEEL UTILITY SHELF WITH BROOM HOLDERS AND RAG HOOKS - EQUAL TO TYPE 9933 BY BRADLEY. MOUNT AT 5'-0" AFF.
3e 8" W x 24" L STAINLESS STEEL SHELF - EQUAL TO TYPE 758-24 BY BRADLEY. MOUNT AT 5'-0" AFF.
3f PAPER TOWEL DISPENSER EQUAL TO MODEL 250-15 BY BRADLEY LOCATED ON WALL ADJACENT TO SINK. MOUNT UNIT 3'-5" FROM WALL TO CENTER OF DISPENSER AND BOTTOM OF UNIT SHALL BE 3'-11" AFF OR DIRECTLY ABOVE THE FRP ON WALLS WITH FRP.
4 PROVIDE THE FOLLOWING PLASTIC LAMINATE SHELVES, WALL CAPS AND SIMILAR ITEMS. LAMINATE COLOR SHALL BE PL-1 UNLESS NOTED OTHERWISE.
4a PLAS LAMINATE WINDOW SILL. PLAS LAM PL-1 TO MATCH WALL CAPS.
4b REFER TO DETAILS 9DIA5, 9FIA5 AND 9FIA5 FOR TYPICAL LOW WALL DETAILS AND PLAS LAM WALL CAP. OUTSIDE CORNERS OF WALL CAP TO HAVE RADIUS CORNERS AND EDGE SHALL BE MM PVC TO MATCH LAMINATE EQUAL TO DOLKEN 'WOODTAPE' (SEE INTERIOR FINISH SCHEDULE FOR COLOR) - TYPICAL THROUGHOUT TREATMENT FLOOR.
4c PLAS LAMINATE SHELF WITH COAT/HAT HOOKS. SEE DETAILS ON SHEET A7.
4d 12" X 12" VERTICAL PIPE CHASE CABINET (15" DEEP AT 'SIM'). CABINET TO RUN FULL HEIGHT FROM TOP OF CHASE CABINET TO CEILING AND SHALL BE OPEN AT TOP AND BOTTOM AS REQUIRED TO INSTALL PIPING AND ELECTRICAL LINES INTO CHASE CABINET. CHASE CABINET FINISH TO MATCH VERTICAL FACE OF CHASE CABINETS. REFER TO DETAIL 7FIA5 FOR CASEWORK DETAIL AND DRAWING W11 FOR PIPING REQUIREMENTS. INCLUDING LONG SWEEP 'BOYS' AT ALL BENDS.
4e S4FCO 3 HOOK COAT RACK MOUNTED TO WALL - ITEM NUMBER 4161. MOUNT TOP OF HOOK AT 5'-0" AFF. (COORDINATE MOUNTING HEIGHT (INCLUDING BACK BLOCKING) WITH OWNER).

- PROVIDE WALL PROTECTION. REFER TO WALL FINISH TYPES ON THE ROOM FINISH SCHEDULE ON SHEET A1. TYPICAL WALL PROTECTION PANELS TO BE INSTALLED WITH TOP AT FINISH FLOOR AND PER THE REQUIREMENTS SHOWN IN DETAIL TWO ON SHEET A2.1. CAULK JOINT BETWEEN BASE AND FRP. INSTALL VERTICAL DIVIDER BARS, TOP HORIZONTAL TRIM AND INSIDE CORNER TRIM PIECES MANUFACTURED BY WALL PANEL MANUFACTURE TO MATCH PANELS. OUTSIDE CORNER JOINTS BETWEEN HORIZONTAL AND VERTICAL EDGE TRIM PIECES SHALL BE MITERED. PANELS AND TRIM SHALL BE INSTALLED PER MANUFACTURER'S RECOMMENDATIONS AND STANDARD DETAILS. REFER TO ROOM FINISH SCHEDULE FOR MATERIAL AND COLOR SELECTIONS IN EACH AREA. REFER TO THE FOLLOWING SUFFIX FOR ADDITIONAL REQUIREMENTS.
5a FULL HEIGHT WALL PROTECTION PANELS AROUND PERIMETER OF ROOM. REFER TO DETAIL ONE ON SHEET A2 FOR WALL DETAILS. CAULK AT TOP OF FLOOR BASE. WHERE APPLICABLE REFER TO CONSTRUCTION NOTE #35 FOR DEN'S GLASS SHEATHING AT LOWER PORTION OF WALL.
5b 51 1/2" AFF AND PER THE REQUIREMENTS SHOWN ABOVE. IT IS THE INTENT THAT THIS WANSICOT / WALL PROTECTION BE CONTINUOUS ALONG WALLS BETWEEN NOTES.
5c WANSICOT / WALL PROTECTION TO UNDERSIDE OF WALL CAP OR WINDOW SILL. INSTALL WITH BOTTOM PER DETAIL TWO ON SHEET A2.1. INSTALL WITH FACTORY EDGE AGAINST WALL CAP.
5d WALL PROTECTION ABOVE BACKSPLASH TO UNDERSIDE OF WALL CABINETS. CAULK JOINTS BETWEEN WALL PROTECTION AND PLAS LAMINATE.
5e WALL PROTECTION OVER WALL BELOW PROCESS PIPING CABINET (SEE DETAILS 3DIA7 AND 3FIA7). PROVIDE TRIM CAP AT TOP OF PANEL UP AGAINST BOTTOM OF CABINET AND HOLD BOTTOM OF PANEL 1/2" ABOVE FLOOR. COVER LOWER PORTION OF PANEL WITH FINISH BASE.

- REFER TO DOOR HARDWARE SCHEDULE FOR REQUIRED AUTOMATIC DOOR OPENER (AND ELECTRIC STRIKE WHERE APPLICABLE) FOR ADJACENT DOOR. REFER TO SUFFIX DESCRIPTION BELOW FOR REQUIREMENTS FOR DOOR CONTROL PADDLES. COORDINATE WITH HARDWARE SCHEDULE AND ELECTRICAL DRAWINGS. REFER TO DETAIL 2FIA5 FOR CONTROL DIAGRAM. COORDINATE EXACT LOCATIONS WITH OWNER.
7a PUSH PADDLE MOUNTED TO WALL. PADDLE SHALL HAVE 'HC' MARKINGS. EXTERIOR GRADE WHERE APPLICABLE. COORDINATE WITH LANDLORD WHEN MOUNTED ON THE EXTERIOR.
7b PUSH PADDLE MOUNTED TO WALL TO OPERATE DOOR OPENER AT DOOR INDICATED ADJACENT TO NOTE. PADDLE SHALL HAVE 'HC' MARKINGS.
7c TOGGLE SWITCH TO CONTROL THE ELECTRIC STRIKE FOR DOOR INDICATED ADJACENT TO NOTE. MOUNT AT SAME HEIGHT AS LIGHT SWITCHES AND COORDINATE EXACT PLACEMENT WITH OWNER.
7d PUSH PADDLE MOUNTED IN FACE OF CABINET ADJACENT TO INTERCOM (SEE NOTE #8b) TO CONTROL POWER CLOSER FOR DOOR INDICATED ADJACENT TO NOTE. OR WIRE PUSH PADDLE INTO INTERCOM SYSTEM SO THAT DOOR CAN BE OPENED FROM INTERCOM WATER PANEL. TILT TOP OF MOUNTING PLATE BACK TO ANGLE UP TOWARD USER. COORDINATE EXACT LOCATION WITH OWNER. PROVIDE TWO WIRELESS - REMOTE HAND CARRIED OPENERS THAT WILL ALSO CONTROL THE SAME POWER CLOSER.
7e ALUMINUM PEDESTAL DESIGNED TO ACCOMMODATE HC ACCESS DOOR PUSH PADDLE FOR POWER ASSISTED DOOR OPENER. MOUNT TO EXISTING CONCRETE SLAB. FINISH TO MATCH EXISTING STOREFRONT. INSTALL PUSH PADDLE INTO PEDESTAL PADDLE SHALL HAVE 'HC' MARKINGS. COORDINATE WITH LANDLORD WHEN MOUNTED ON THE EXTERIOR.

- REFER TO DETAIL 2CA5 FOR INTERCOM SYSTEM REQUIREMENTS. REFER TO SUFFIX BELOW FOR LOCATIONS OF ASSOCIATED COMPONENTS.
8a TWO WAY INTERCOM BOX MOUNTED ADJACENT TO DOOR. BOX TO MOUNTED AT ADA COMPLIANT HEIGHT OF 42" AFF TO HIGHEST CONTROL POINT.
8b TWO WAY MASTER INTERCOM BOX MOUNTED IN FACE OF CABINET AT NURSE'S STATION ADJACENT TO AUTOMATIC DOOR PADDLE (NOTE 7E). TILT TOP OF MOUNTING PLATE BACK TO ANGLE INTERCOM UP TOWARD USER. COORDINATE EXACT LOCATION WITH OWNER.
8c TWO WAY VOICE CALL BOX MOUNTED ADJACENT TO DOOR. (EXTERIOR GRADE AT OUTSIDE DOOR)

- PLYWOOD PROTECTION AND MOUNTING BOARD PAINTED TO MATCH ADJACENT WALLS. REFER TO SUFFIX LOCATIONS BELOW FOR ADDITIONAL REQUIREMENTS.
9a 4x8x1/2" PLYWOOD MOUNTING BOARD MOUNTED HORIZONTALLY. BOTTOM EDGE TO BE AT 2'-5" AFF. FOR ALL LENGTH OF WALL.
9b REFER TO DETAIL ONE ON SHEET A2 FOR WALL DETAILS AND DETAILS 3DIA7 AND 3FIA7 FOR CASEWORK CONSTRUCTION AS WELL AS WATER/TREATMENT LINES. NOTE REQUIREMENT FOR PLYWOOD BEHIND CHASE CABINET FOR MOUNTING CHASE CABINETS AND GLASS MAT BOARD BELOW.
9c 8" HIGH X 1/2" CDX PLYWOOD MOUNTING BOARD MOUNTED VERTICALLY FROM LOWER SECTION OF DENS GLASS PER DETAIL 8BIA2 WALL DETAILS FOR FULL LENGTH OF WALL. ON ALL WALLS IN INDICATED ROOM. PLYWOOD TO BE COVERED WITH FRP (SEE CONSTRUCTION NOTE #5a). REFER TO CONSTRUCTION NOTE #35 FOR DEN'S GLASS SHEATHING AT LOWER PORTION OF WALL. REFER TO ROOM FINISH SCHEDULE NOTE #2.

- 8" HIGH X 3/8" THICK TEMPERED GLASS SPLASH GUARD SET INTO CONTIGUOUS ALUMINUM CHANNEL RECESSED INTO CENTER OF PLAS LAMINATE TOP. CORNERS OF GLASS TO HAVE 4" RADIUS CORNERS. CAULK BETWEEN CHANNEL AND TOP. GLASS SHALL BE FULL HEIGHT FROM COUNTERTOP TO BOTTOM OF WALL CABINETS AT 'SIM' CONDITION.
10 CENTER NEW WINDOW SYSTEM MULLION ON NEW DEMISING WALL. PROVIDE ALUMINUM BREAK METAL END CAP MATCHING STOREFRONT AT END OF WALL UP AGAINST MULLION.
12 PROVIDE ALUMINUM SLIDING TRACK EQUAL TO C.R. LAURENCE 'CONTINENTAL STYLE PRE-CUT SECURITY ASSEMBLY'. CATALOG NUMBER 'C1A72A' DESIGNED FOR TWO DOOR AND CENTER SECTION OF GLASS. TRACK SHALL BE TOP AND BOTTOM OF OPENING. REFER TO INTERIOR ELEVATION DETAIL FOR SIZES. GLASS TO BE 3/8" CLEAR PLANO SAFETY GLAZING WITH POLISHED EDGES WITH MEETING SECTIONS OVERLAPPING A MINIMUM OF 1/2". PROVIDE LOCKING DEVICE(S) TO SECURE GLASS IN A CLOSED POSITION. PROVIDE HANDLES MOUNTED TO INSIDE FACE OF GLASS TO ALLOW OPENING OF GLASS FROM ANY DIRECTION. SEE DTL 6FIA5.

- CONTRACTOR TO INSTALL OWNER PROVIDED HC TOILET SIGNAGE. SIGN TO BE MOUNTED 5'-0" AFF TO CENTER OF SIGN AND EDGE OF SIGN SHALL BE 2" FROM DOOR FRAME.
20 PROVIDE 2" DIAMETER CABLE ACCESS HOLE IN COUNTER. PROVIDE PLASTIC GROMMET WITH CAP. COORDINATE EXACT LOCATION WITH OWNER. PROVIDE 4" DIAMETER GROMMET AT 'SIM' CONDITION.
26 EMERGENCY EYE WASH. REFER TO MECHANICAL PLANS.
28a BOWL TYPE.
28b WALL MOUNTED DRENCH HOSE

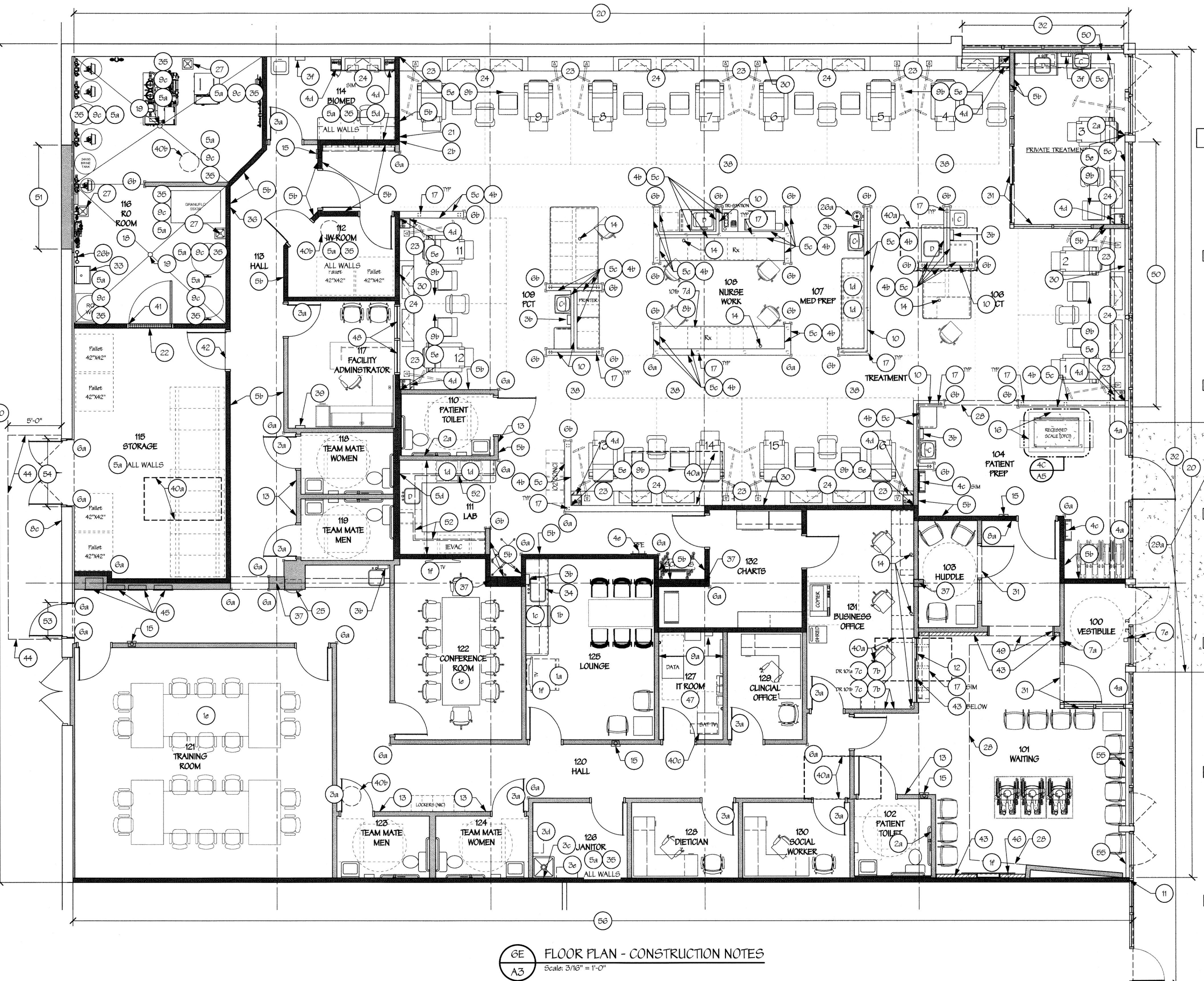
- PROVIDE FIRE EXTINGUISHER AND CABINET. CABINET SHALL BE ACADEMY #1027-V-10 AS PRODUCED BY J.L. INDUSTRIES, BLOOMINGTON, MN. FIRE EXTINGUISHER SHALL BE 'COSMIC 10E' AS PRODUCED BY J.L. INDUSTRIES, BLOOMINGTON, MN. MOUNT TOP OF CABINET 3'-0" ABOVE FINISH FLOOR. VERIFY WITH LOCAL CODE AUTHORITIES PRIOR TO INSTALLATION.
16 CAREFULLY SAWCUT EXISTING CONCRETE SLAB IN AREA FOR NEW RECESSED FLOOR SCALE. RECESSED FLOOR SCALE SHALL BE OWNER FURNISHED AND CONTRACTOR INSTALLED. COORDINATE REQUIRED DELIVERY DATE OF BASE PLATE WITH OWNER. PREPARE SUB GRADE UNDER EXISTING SLAB FOR INSTALLATION OF NEW CONCRETE PIT FOR FLOOR SCALE. NEW SLAB TO BE A MIN OF 4" THICK FIBERGLASS REINFORCED 3,000 PSI CONCRETE. RUN CONTROL CONDUIT FROM PIT TO WALL MOUNTED SCALE READ OUT. COORDINATE WITH MANUFACTURER'S STANDARD DETAILS AND WITH OWNER.
17 3"x3" STL. TUBE BRACE ANCHORED TO FLOOR AND SPACED 4'-0" OC. REFER TO DETAILS 9DIA5 AND 9FIA5 FOR TYPICAL LOW WALL DETAILS AND ADDITIONAL REQUIREMENTS. REFER TO NOTE #4b FOR PLAS LAM WALL CAP. SUPPORTS FOR TRANSACTION COUNTER AT 'SIM' CONDITION.

- CAREFULLY SAWCUT EXISTING CONCRETE SLAB AROUND PERIMETER OF ROOM AND REMOVE CONCRETE. PREPARE SUB GRADE UNDER EXISTING SLAB FOR INSTALLATION OF NEW CONCRETE FLOOR SLAB IN THIS ROOM WITH MIN 4" GRAVEL BASE. NEW SLAB TO BE A MIN OF 5" THICK FIBERGLASS REINFORCED CONCRETE WITH MIN 3,000 PSI CONCRETE. MIX DESIGN SHALL ACCOMMODATE EARLY LOW MOISTURE VAPOR TESTS FOR INSTALLATION OF FLOOR FINISHES WITHIN 8 WEEKS OF CONCRETE PLACEMENT (COORDINATE WITH FLOORING CONTRACTOR). FORM CONCRETE TO PROVIDE POSITIVE (MIN 1 1/2" TOTAL SLOPE) DRAINAGE TO FLOOR DRAINS AND SET SO THAT NEW FLOOR FINISH IS FLUSH WITH EXISTING. SEE DETAIL 7EAS.
19 FLOOR DRAIN FOR POSITIVE DRAINAGE. SEE NOTE #18.

- EXISTING GYP BOARD WALL (INCLUDING AROUND STOREFRONT). REWORK EXISTING WALL AS REQUIRED TO MEET THE REQUIREMENTS OF DETAIL ONE ON SHEET A2.1 WHERE APPLICABLE. REMOVE EXISTING GYP BOARD AS REQUIRED TO INSTALL NEW ELECTRICAL WORK AND BLOCKING. RESTORE EXTERIOR INSULATION AND PATCH GYP BOARD FOR A SMOOTH UNIFORM APPEARANCE IN PREPARATION OF INSTALLATION OF NEW FINISHES.
21 VARIOUS ALARM PANELS TO BE LOCATED IN THIS AREA. COORDINATE / VERIFY WITH OWNER PRIOR TO INSTALLATION. REFER TO DETAIL 8BIA2 FOR MOUNTING HEIGHTS / CONFIGURATIONS AND ELECTRICAL DRAWINGS FOR ADDITIONAL REQUIREMENTS.

- REFER TO PLUMBING DRAWINGS FOR TRENCH DRAIN AT DOOR. TOP OF TRENCH DRAIN TO BE FLUSH WITH FINISH FLOOR AND ABOUT 1 1/2" ABOVE FLOOR DRAINS IN RO ROOM.
22 REFER TO PLUMBING DRAWINGS FOR TRENCH DRAIN AT DOOR. TOP OF TRENCH DRAIN TO BE 1 1/2" ABOVE FINISH FLOOR. SEE NOTE #18 FOR FLOOR TOPPING TO CREATE 'DAM' AT THIS LOCATION.
23 TYPICAL PIPING CABINET (CHASE). REFER TO DETAILS 3DIA7, 3EIA7, 4GIA7 AND 6GIA7. NO VERTICAL DRAIN PIPING INTO THE FLOOR SLAB SHALL BE INSTALLED IN THIS AREA.
24 TYPICAL TREATMENT STATION. REFER TO DETAILS 3DIA7, 3EIA7, 4GIA7 AND 6GIA7. COORDINATE DRAINS FOR WATER BOXES WITH PLUMBING DRAWINGS AND DIMENSIONS ON AT PLAN TO MAKE SURE THAT VERTICAL DRAIN LINE IS LOCATED IN THE TREATMENT STATION. PAINT EXPOSED PIPING BELOW BOTTOM OF CABINET TO MATCH WALL.

- WATER BOTTLE FILLING STATION PER MECHANICAL. COORDINATE WALL THICKNESS REQUIRED (ABOUT 12" DEEP) WITH MANUFACTURER'S REQUIREMENTS FOR A FLUSH / RECESSED INSTALLATION.
25 REFER TO DETAIL ONE ON SHEET A2.1 'WALL DETAILS' FOR REQUIREMENTS FOR WALL CONSTRUCTION OF RO ROOM WALLS, BIOMED AND JANITOR CLOSET, INCLUDING LOWER PORTIONS OF WALL TO BE 5/8" EXTERIOR GRADE DEN'S GLASS SHEATHING.



6E FLOOR PLAN - CONSTRUCTION NOTES
Scale 3/16" = 1'-0"

THIS DRAWING IS THE PROPERTY OF INSINO ARCHITECTURAL DESIGNS INC., UNAUTHORIZED USE OF ANY KIND, INCLUDING USE ON OTHER PROJECTS, IS PROHIBITED.

Davita Healthcare Partners, Inc.
2899 16th Street
Denver, CO 80202

DAVID A. LINKOW, ARCHITECT
1833 N. HIGHWAY
SCOTSDALE, ARIZONA 85208
480-948-3295 FAX 480-644-0293

DAVISON VAN ORDEN
1144 N. WEST ST
DENVER, CO 80202
303-333-3333 FAX 303-333-3333

NO. 1	DATE	DESCRIPTION
1	05/18/18	ISSUED FOR PERMIT
2	06/05/18	ISSUED FOR PERMIT
3	06/12/18	ISSUED FOR PERMIT
4	06/19/18	ISSUED FOR PERMIT
5	06/26/18	ISSUED FOR PERMIT
6	07/03/18	ISSUED FOR PERMIT
7	07/10/18	ISSUED FOR PERMIT
8	07/17/18	ISSUED FOR PERMIT
9	07/24/18	ISSUED FOR PERMIT
10	07/31/18	ISSUED FOR PERMIT

PROJECT # 10989

A3