

THIS DRAWING IS THE PROPERTY OF INSYNC-ARCHITECTURAL DESIGNS INC., UNAUTHORIZED USE OF ANY KIND, INCLUDING USE ON OTHER PROJECTS, IS PROHIBITED.

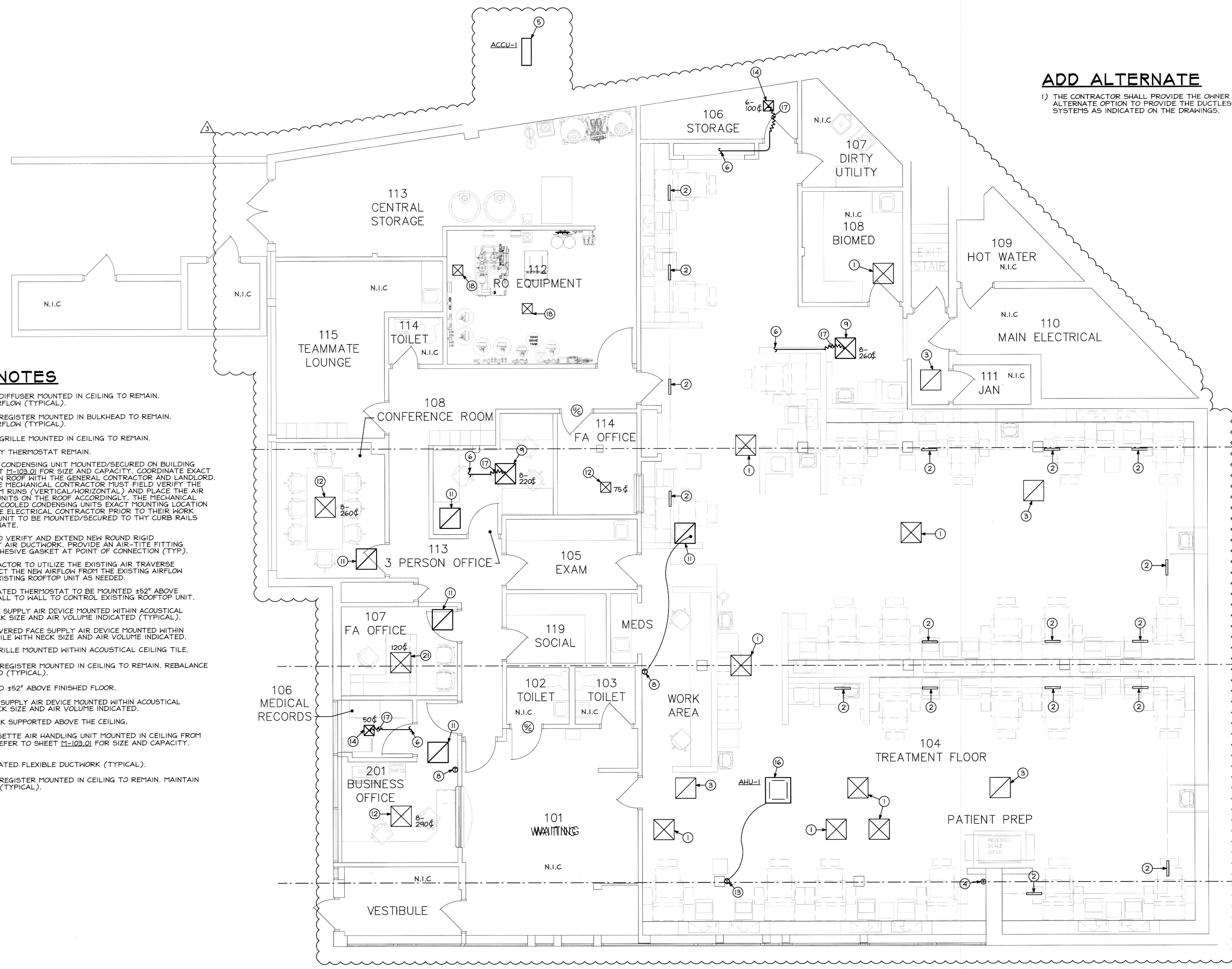
NO.	DESCRIPTION	DATE	BY
1	PERMIT SUBMITTAL		
2	REVISION L-CORNER REVISIONS		
3	REVISION L-CORNER REVISIONS		
4	REVISION L-CORNER REVISIONS		

ADD ALTERNATE

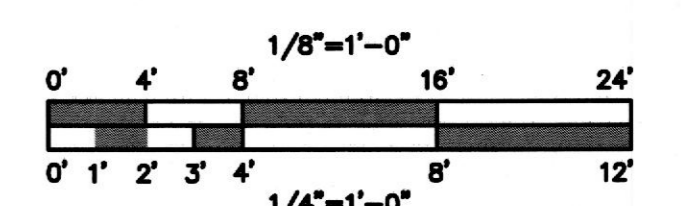
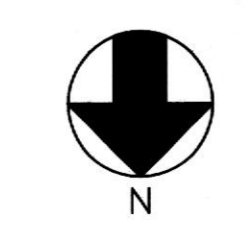
1) THE CONTRACTOR SHALL PROVIDE THE OWNER A ADD ALTERNATE OPTION TO PROVIDE THE DUCTLESS SPLIT SYSTEMS AS INDICATED ON THE DRAWINGS.

DRAWING NOTES

- ① EXISTING SUPPLY AIR DIFFUSER MOUNTED IN CEILING TO REMAIN. MAINTAIN EXISTING AIRFLOW (TYPICAL).
- ② EXISTING SUPPLY AIR REGISTER MOUNTED IN BULKHEAD TO REMAIN. MAINTAIN EXISTING AIRFLOW (TYPICAL).
- ③ EXISTING RETURN AIR GRILLE MOUNTED IN CEILING TO REMAIN.
- ④ EXISTING HEATING ONLY THERMOSTAT REMAIN.
- ⑤ OUTDOOR AIR COOLED CONDENSING UNIT MOUNTED/SECURED ON BUILDING ROOF. REFER TO SHEET M-103.01 FOR SIZE AND CAPACITY. COORDINATE EXACT MOUNTING LOCATION ON ROOF WITH THE GENERAL CONTRACTOR AND LANDLORD. PRIOR TO INSTALL THE MECHANICAL CONTRACTOR MUST FIELD VERIFY THE REFRIGERANT MAXIMUM RUNS (VERTICAL/HORIZONTAL) AND PLACE THE AIR COOLED CONDENSING UNITS ON THE ROOF ACCORDINGLY. THE MECHANICAL MUST VERIFY THE AIR COOLED CONDENSING UNITS EXACT MOUNTING LOCATION ON THE ROOF WITH THE ELECTRICAL CONTRACTOR PRIOR TO THEIR WORK BEGINNING. OUTDOOR UNIT TO BE MOUNTED/SECURED TO THY CURB RAILS ON ROOF. ADD ALTERNATE.
- ⑥ CONTRACTOR TO FIELD VERIFY AND EXTEND NEW ROUND RIGID DUCTWORK TO SUPPLY AIR DUCTWORK. PROVIDE AN AIR-TITE FITTING WITH DAMPER AND ADHESIVE GASKET AT POINT OF CONNECTION (TYP).
- ⑦ AIR BALANCING CONTRACTOR TO UTILIZE THE EXISTING AIR TRAVERSE READINGS AND SUBTRACT THE NEW AIRFLOW FROM THE EXISTING AIRFLOW AND REBALANCE THE EXISTING ROOFTOP UNIT AS NEEDED.
- ⑧ RELOCATED/RECALIBRATED THERMOSTAT TO BE MOUNTED ±52" ABOVE FINISHED FLOOR ON WALL TO WALL TO CONTROL EXISTING ROOFTOP UNIT.
- ⑨ 24"x24" LOUVERED FACE SUPPLY AIR DEVICE MOUNTED WITHIN ACOUSTICAL CEILING TILE WITH NECK SIZE AND AIR VOLUME INDICATED (TYPICAL).
- ⑩ RELOCATED 12"x12" LOUVERED FACE SUPPLY AIR DEVICE MOUNTED WITHIN ACOUSTICAL CEILING TILE WITH NECK SIZE AND AIR VOLUME INDICATED.
- ⑪ 24"x24" RETURN AIR GRILLE MOUNTED WITHIN ACOUSTICAL CEILING TILE.
- ⑫ EXISTING SUPPLY AIR REGISTER MOUNTED IN CEILING TO REMAIN. REBALANCE TO AIRFLOW INDICATED (TYPICAL).
- ⑬ THERMOSTAT MOUNTED ±52" ABOVE FINISHED FLOOR.
- ⑭ 12"x12" LOUVERED FACE SUPPLY AIR DEVICE MOUNTED WITHIN ACOUSTICAL CEILING TILE WITH NECK SIZE AND AIR VOLUME INDICATED.
- ⑮ EXHAUST AIR DUCTWORK SUPPORTED ABOVE THE CEILING.
- ⑯ DUCTLESS SPLIT CASSETTE AIR HANDLING UNIT MOUNTED IN CEILING FROM STRUCTURE ABOVE. REFER TO SHEET M-103.01 FOR SIZE AND CAPACITY. ADD ALTERNATE.
- ⑰ INSULATED/PLENUM RATED FLEXIBLE DUCTWORK (TYPICAL).
- ⑱ EXISTING SUPPLY AIR REGISTER MOUNTED IN CEILING TO REMAIN. MAINTAIN EXISTING TO AIRFLOW (TYPICAL).



FLOOR PLAN-NEW WORK (HVAC)
SCALE: 1/4"=1'-0"



A B C D E F G H