

**DRAWING NOTES**

- ETR SA DUCTWORK
- ETR EA DUCTWORK
- ETR AIR DEVICE
- RELOCATED AIR DEVICE.
- RE-BALANCE EXHAUST AIR DEVICE AS INDICATED ON FAN RE-BALANCE SCHEDULE
- ETR RA TRANSFER DUCT
- ETR DUCT MOUNTED FIRE DAMPER
- SA AND RA DUCTS FROM RTU-1
- SA AND RA DUCTS FROM RTU-2
- SA AND RA DUCTS FROM RTU-3
- ETR ALL DUCTWORK AND AIR DEVICES IN PROCEDURE ROOM
- CONTINUATION OF EXHAUST DUCT SERVING EX FAN F-1 NOT SHOWN
- ETR EXHAUST FAN F-1
- ETR EXHAUST FAN F-2
- 10x4 SCREENED OED ABOVE CEILING
- CONNECT SA FLEX DUCT TO EX. SA AIR DEVICE

**GENERAL NOTES**

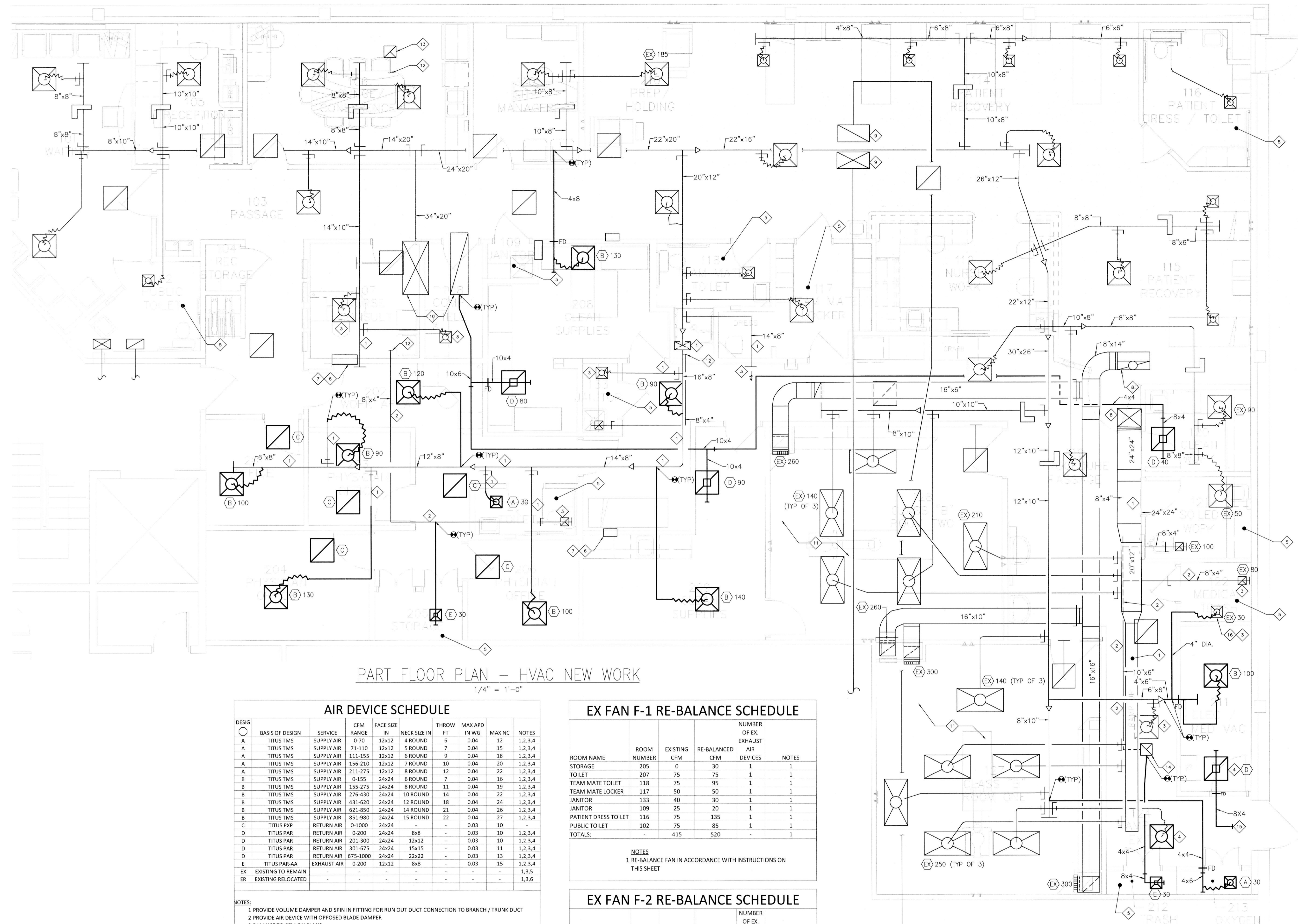
- ALL DUCT SIZES SHOWN ON DRAWINGS ARE IN INCHES
- PROVIDE VOLUME DAMPERS AT ALL BRANCH DUCT TAKE OFFS TO AIR DEVICE RUN-OUT DUCTS
- EXISTING DUCT LAYOUT IS TAKEN FROM EXISTING DRAWINGS. CONTRACTOR SHALL FIELD VERIFY EXISTING CONDITIONS PRIOR TO BID TO VERIFY ACCURACY OF EXISTING LAYOUT AS IT PERTAINS TO THE NEW WORK SCOPE OF WORK AND INCLUDE APPROPRIATE ADJUSTMENTS TO BID PRICE TO ACCOUNT FOR ANY AS-BUILT VARIANCES TO THE DEMOLITION LAYOUT INDICATED HEREIN
- PROCEDURE ROOMS AND RTU-1 RE-BALANCING: RE-BALANCE PROCEDURE ROOM SA AND RA TO AIRFLOWS INDICATED ON DRAWING; RE-BALANCE RTU-1 FOR 1,380 CFM SA, 260 CFM OA AND 1,120 CFM RA

**EXISTING RTU BALANCING SCOPE OF WORK**

- APPLIES TO RTU-1,2,3
- BALANCE / RE-BALANCE SA AND RA AIR DEVICES TO THE INDICATED CFM.
- WHERE NO BALANCE OR RE-BALANCE CFM IS SHOWN, THE AIR DEVICE SHALL BE BALANCED TO THE EXISTING AIR QUANTITY. CONTRACTOR TO MEASURE EX. AIR QUANTITY PRIOR TO COMMENCEMENT OF ANY OTHER MODIFICATIONS AND RE-BALANCE TO SAME ONCE OTHER SA AND RA AIR DEVICE MODIFICATIONS ARE FINISHED.
- FOR EACH RTU FAN TO BE RE-BALANCED: ADJUST SPACE AIRFLOWS THROUGH ADJUSTMENT OF VOLUME DAMPERS AND MEASUREMENT OF AIR FLOW. REPLACE FAN DRIVE BELTS AND ADJUST OR RE-SHEAVE BELT DRIVE ASSEMBLY OF FAN AS NECESSARY TO ACHIEVE RE-BALANCED FAN AIRFLOW AS REQUIRED. IF FAN MOTOR IS EQUIPPED WITH VFD OR ECM MOTOR FOR BALANCING, ADJUST VFD / ECM MOTOR SETTINGS TO PROVIDE REQUIRED AIRFLOW IN LIEU OF BELT DRIVE ASSEMBLY

**EXISTING EXHAUST FAN BALANCING SCOPE OF WORK**

- FOR EACH EXHAUST FAN TO BE RE-BALANCED: ADJUST SPACE AIRFLOWS AS INDICATED IN THE SCHEDULES THROUGH ADJUSTMENT OF VOLUME DAMPERS AND MEASUREMENT OF EXHAUST AIR FLOW.
- REPLACE FAN DRIVE BELTS AND ADJUST OR RE-SHEAVE BELT DRIVE ASSEMBLY OF FAN AS NECESSARY TO ACHIEVE RE-BALANCED FAN AIRFLOW AS INDICATED.



PART FLOOR PLAN - HVAC NEW WORK  
1/4" = 1'-0"

DESIG	BASIS OF DESIGN	SERVICE	CFM RANGE	FACE SIZE IN	NECK SIZE IN	THROW FT	MAX SPD IN WG	MAX NC	NOTES
A	TITUS TMS	SUPPLY AIR	0-70	12x12	4 ROUND	6	0.04	12	1,2,3,4
A	TITUS TMS	SUPPLY AIR	71-110	12x12	5 ROUND	7	0.04	15	1,2,3,4
A	TITUS TMS	SUPPLY AIR	111-155	12x12	6 ROUND	9	0.04	18	1,2,3,4
A	TITUS TMS	SUPPLY AIR	156-210	12x12	7 ROUND	10	0.04	20	1,2,3,4
A	TITUS TMS	SUPPLY AIR	211-275	12x12	8 ROUND	12	0.04	22	1,2,3,4
B	TITUS TMS	SUPPLY AIR	0-155	24x24	6 ROUND	7	0.04	16	1,2,3,4
B	TITUS TMS	SUPPLY AIR	155-275	24x24	8 ROUND	11	0.04	19	1,2,3,4
B	TITUS TMS	SUPPLY AIR	276-430	24x24	10 ROUND	14	0.04	22	1,2,3,4
B	TITUS TMS	SUPPLY AIR	431-620	24x24	12 ROUND	18	0.04	24	1,2,3,4
B	TITUS TMS	SUPPLY AIR	621-850	24x24	14 ROUND	21	0.04	26	1,2,3,4
B	TITUS TMS	SUPPLY AIR	851-1000	24x24	15 ROUND	22	0.04	27	1,2,3,4
C	TITUS PXP	RETURN AIR	0-1000	24x24	-	-	0.03	10	1,2,3,4
D	TITUS PAR	RETURN AIR	0-200	24x24	8x8	-	0.03	10	1,2,3,4
D	TITUS PAR	RETURN AIR	201-800	24x24	12x12	-	0.03	10	1,2,3,4
D	TITUS PAR	RETURN AIR	801-675	24x24	15x15	-	0.03	13	1,2,3,4
D	TITUS PAR	RETURN AIR	675-1000	24x24	22x22	-	0.03	13	1,2,3,4
E	TITUS PAR-AA	EXHAUST AIR	0-200	12x12	8x8	-	0.03	15	1,2,3,4
EX	EXISTING TO REMAIN	-	-	-	-	-	-	-	1,3,5
ER	EXISTING RELOCATED	-	-	-	-	-	-	-	1,3,6

- NOTES:**
- PROVIDE VOLUME DAMPER AND SPIN IN FITTING FOR RUN OUT DUCT CONNECTION TO BRANCH / TRUNK DUCT
  - PROVIDE AIR DEVICE WITH OPPOSED BLADE DAMPER
  - BALANCE TO CFM ON PLANS
  - RUN OUT DUCT SIZE TO BRANCH / TRUNK DUCT TO BE SAME SIZE AS AIR DEVICE NECK SIZE
  - EXISTING TO REMAIN AIR DEVICE
  - EXISTING RELOCATED AIR DEVICE

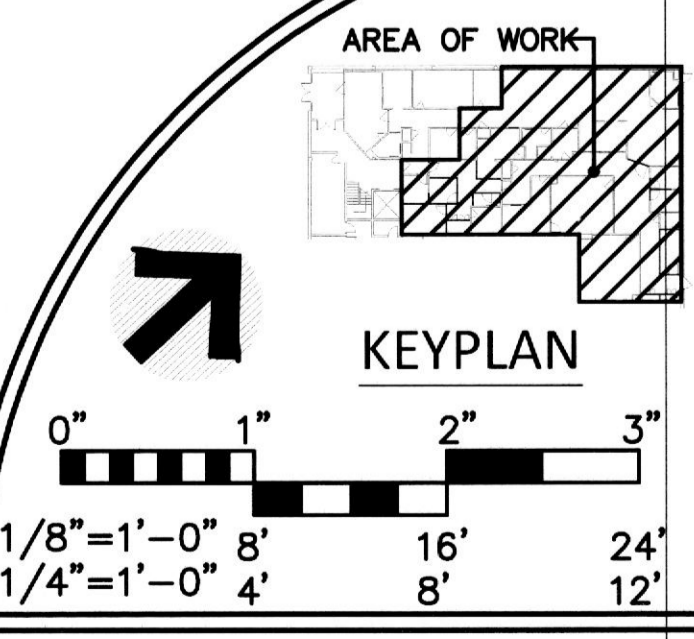
**AIR DEVICE DESIGNATION:**  
 ○xxx  
 ○ BALANCE CFM  
 ○ AIR DEVICE DESIGNATION

ROOM NAME	ROOM NUMBER	EXISTING CFM	RE-BALANCED CFM	EXHAUST AIR DEVICES	NUMBER OF EX. DEVICES	NOTES
STORAGE	205	0	30	1	1	
TOILET	207	75	75	1	1	
TEAM MATE TOILET	118	75	95	1	1	
TEAM MATE LOCKER	117	50	50	1	1	
JANITOR	133	40	30	1	1	
JANITOR	109	25	20	1	1	
PATIENT DRESS TOILET	116	75	135	1	1	
PUBLIC TOILET	102	75	85	1	1	
TOTALS:	-	415	520	-	1	

**NOTES:**  
 1 RE-BALANCE FAN IN ACCORDANCE WITH INSTRUCTIONS ON THIS SHEET

ROOM NAME	ROOM NUMBER	EXISTING CFM	RE-BALANCED CFM	EXHAUST AIR DEVICES	NUMBER OF EX. DEVICES	NOTES
TRASH	212	60	30	1	1	
SOILED WORK RM	121	90	100	1	1	
MED TRASH	122	50	80	1	1	
TOTALS:	-	200	210	-	1	

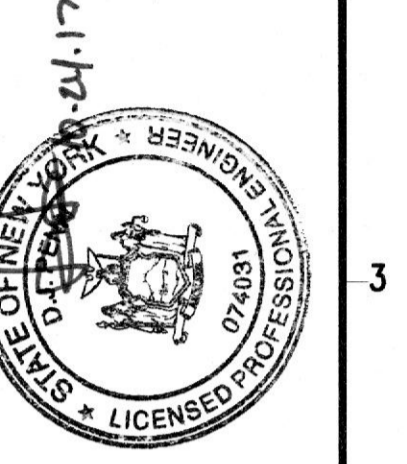
**NOTES:**  
 1 RE-BALANCE FAN IN ACCORDANCE WITH INSTRUCTIONS ON THIS SHEET



HVAC NEW WORK

REV#	DATE	DESCRIPTION
-	10/20/17	PERMIT SET

ISSUED FOR  
BUILDING PERMIT



DAVID P. CONNER  
 LICENSED PROFESSIONAL ENGINEER  
 1000 S. 11th Street, 4th Fl.  
 Brooklyn, NY 11215  
 Tel: 718.268.1811



TENANT RENOVATIONS FOR:  
**LIFELINE ACCESS CENTER**  
 1733 Eastchester Road  
 Bronx, NY 10461



**INS vnc**  
 ARCHITECTURAL DESIGNS, INC.  
 1213 Old Pysville Road  
 Whiteford, MD 21160  
 Office: 410-452-8006  
 Fax: 410-452-8046



REV#	DATE	DESCRIPTION
-	10/20/17	PERMIT SET