

DON PINI CONSULTING ENGINEER
301 SOANAN BLVD.
WESTLAKE, NY 10992
© 817-410-2858 / F 817-251-8411



TENANT RENOVATIONS FOR:
LIFELINE ACCESS CENTER
1733 Eastchester Road
Bronx, NY 10461



INS ync
DESIGNS, INC.
Whiteford, MD 21160
1213 Old Pylesville Road
Office 410-452-8006



DATE DRAWN BY
10/20/17 JLM
JOB NUMBER ORDERED BY
11241 JLM

PLUMBING FIXTURE SPECIFICATIONS

GENERAL NOTES:

- ALL SINKS: ALL EXPOSED WASTE PIPING AND HOT AND COLD WATER PIPING SHALL BE INSULATED WITH TRUBRO HANDI LAV-GUARD MODEL 102 INSULATION KIT WITH WHITE FINISH.
- BACKFLOW PREVENTERS (VACUUM BREAKERS) SHALL BE INSTALLED ON ALL CLINICAL SINKS, JANITOR SINKS, HOSE BIBBS ETC. AND ON ALL OTHER FIXTURES TO WHICH HOSES AND TUBING CAN BE ATTACHED.
- BACKFLOW PREVENTION SHALL BE INSTALLED FOR ALL REFRIGERATOR ICE MAKER CONNECTIONS

P-1 COUNTERTOP EXAM SINK:

#LR-1722 BY ELKAY, 18 GAUGE-TYPE 301-SELF RIM BOWL. FAUCET SHALL BE #2712944 BY DELTA, 10-1/2" HIGH GOOSENECK SPOUT WITH 6" WRIST BLADE HANDLES AND A 1.5 GPM LAMINAR FLOW WITH AERATOR. SINK TO BE COMPLETE WITH GRID DRAIN, TAILPIECE, AST BRASS "P" TRAP, WALL ESCUTCHEON AND SUPPLY VALVES WITH CHROME SUPPLIES.

P-2 SCRUB SINK:

#Z5460 BY ZURN, (NO SUBSTITUTES), WALL MOUNTED VITREOUS CHINA SURGEON SINK, LOW FRONT RIM WITH LARGE DEEP BASIN, SINGLE FAUCET HOLE, COMPLETE WITH CONCEALED FLOOR MOUNTED ARM CARRIER/SUPPORT BRACKETS, FAUCET SHALL BE POLISHED CHROME PLATED SENSOR ACTIVATED, SOLIDE BRASS SOLENOID WITH BUILT-IN FILTER SOLENOID VALVE WITH SERVICABLE "Y" STRAINER FILTER AND 2.2 GPM LAMINAR FLOW. METAL JACKETED WIRE PROTECTION FOR SENSOR AND

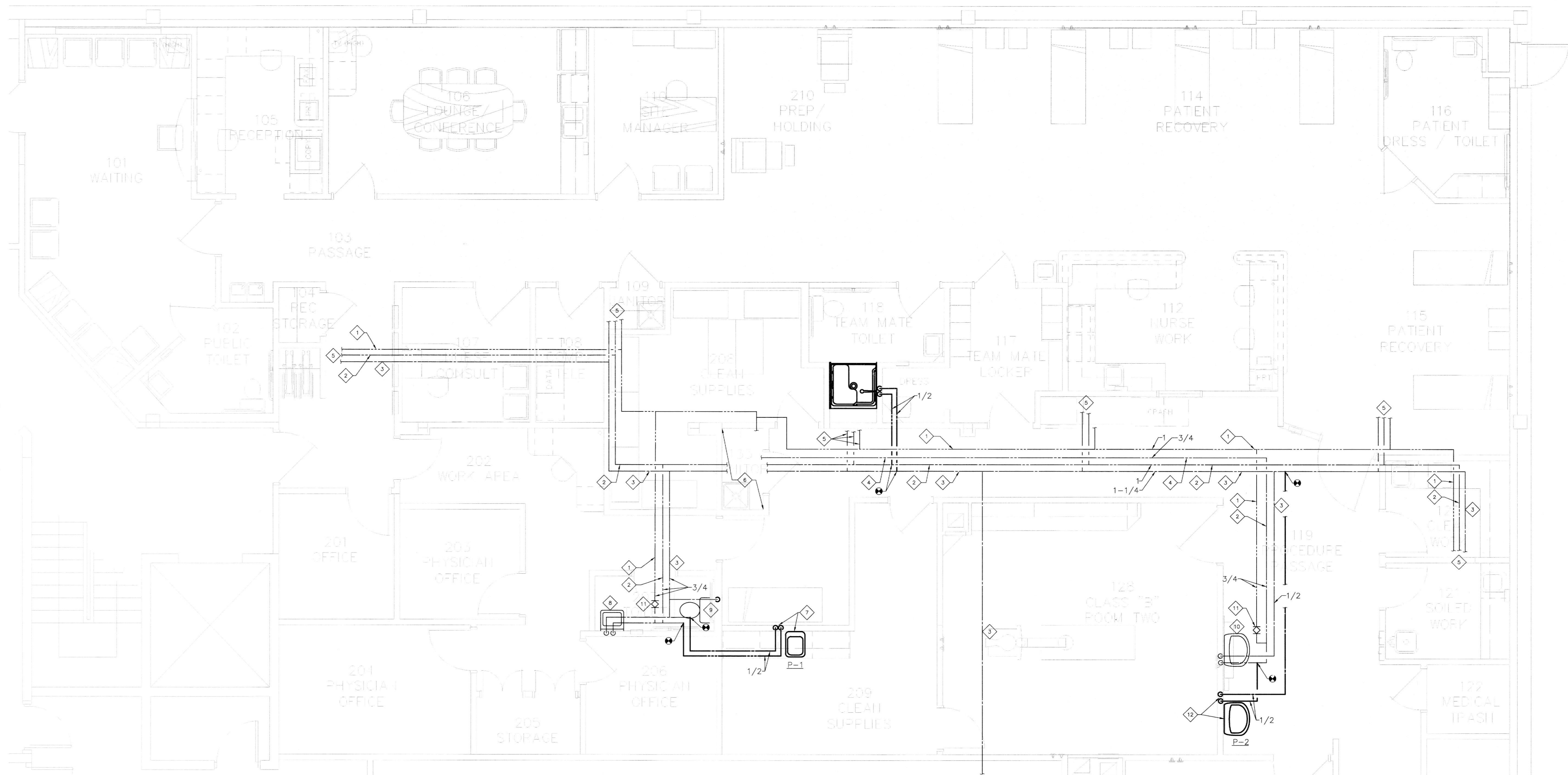
SOLENOID LEADS. GOOSENECK FAUCET SHALL HAVE A SURGICAL BEND SPOUT, 8" TRIM PLATE AND PLUG-IN TRANSFORMER. FAUCET WILL BE SLOAN, MODEL #ETF-700-S-8P NO SUBSTITUTIONS. SINK TO BE COMPLETE FLAT METAL DRAIN WITH 1-1/2"x4" TAILPIECE. ALSO INCLUDE "P" TRAP, TUBING TO WALL ESCUTCHEON AND SUPPLY VALVES WITH CHROME SUPPLIES.

P-3 SHOWER:

CRANE MODEL 3636.01F R WITH 36"x36" STALL, ONE-PIECE FIBERGLASS CONSTRUCTION. UNIT SHALL COME WITH FACTORY OPTION, CAST BRASS DRAIN WITH CHROME PLATED STRAINER, ACRYLIC ANTIBACTERIAL PROTECTION, WHITE FINISH, SHOWER CURTAIN, SOLID PADDED VINYL SEAT, SLIDE GUIDE (FOR HAND HELD SHOWER ATTACHMENT), SWIVEL FITTING, 69" FLEXIBLE STAINLESS STEEL HOSE, AND IN-LINE BREAKER AND PRESSURE BALANCED SINGLE LEVER MIXING VALVE WITH CHECK STOPS.

TMV-1 FOR ALL SINKS (EXCEPT SCRUB SINK) SHALL BE SYMMONS MAXLINE MODEL #5-210-CXX-NI THERMOSTATIC MIXING VALVE WITH 3/8" INLET AND OUTLET, WITH COMPRESSION FITTINGS, BRASS / BRONZE BODY, STAINLESS STEEL FLOW CONTROL COMPONENTS, VANDAL RESISTANT LOCKABLE HANDLE, SEPARATE CHECKS, WALL BRACKET, ROUGH CHROME FINISH. ASSE 1070 CERTIFIED, FIELD SET TEMPERATURE AT 110 DEGREES F.

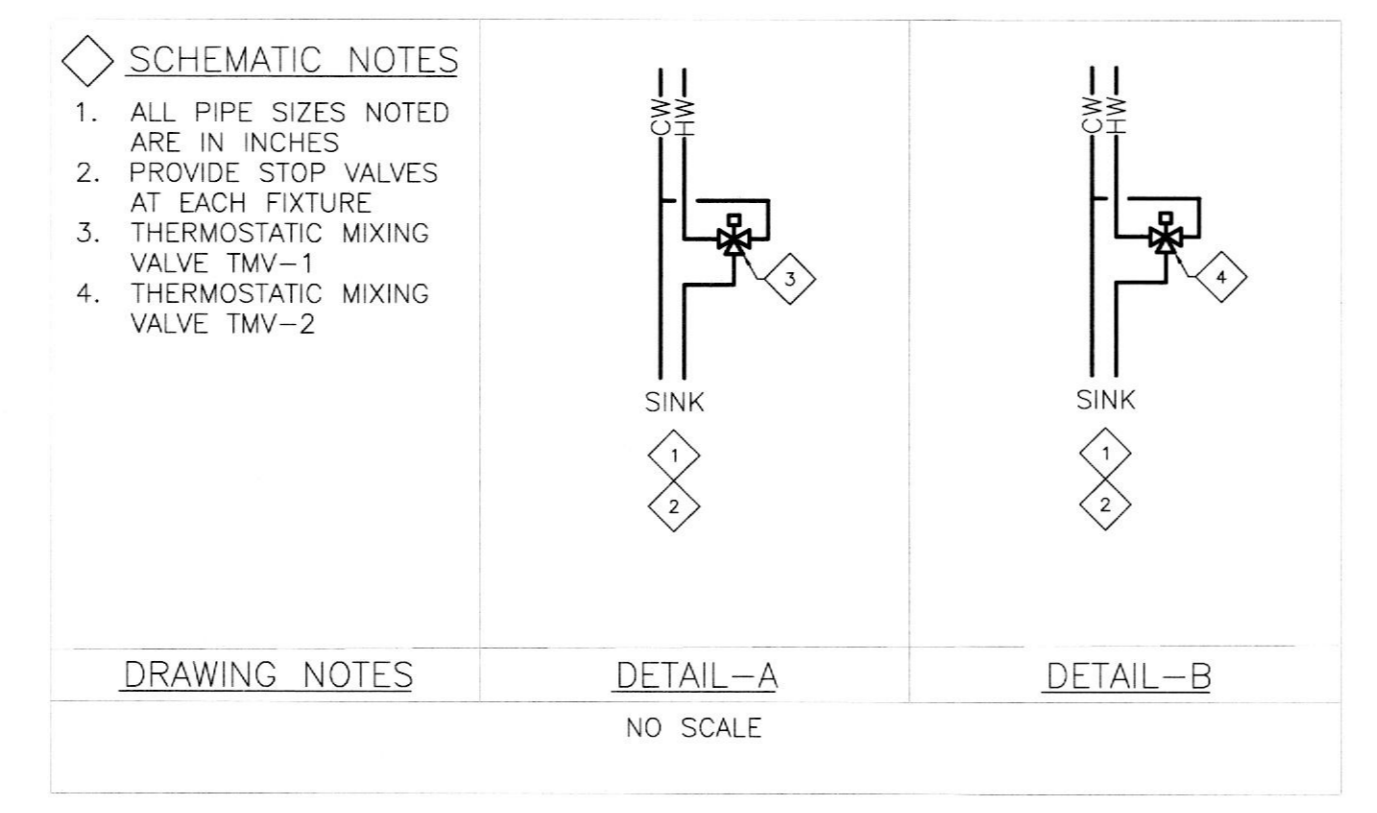
TMV-2 FOR SCRUB SINK, SHALL BE BRADLEY MODEL 559-2005 PRESSURE BALANCED ANTI-SCALD VALVE MOUNTED ON WALL 4" ABOVE SCRUB SINK ON THE RIGHT HAND SIDE OF THE SINK. ANTI-SCALD VALVE TO WORK IN CONJUNCTION WITH INFRA-RED GOOSENECK FAUCET



PART FLOOR PLAN - DOMESTIC WATER PIPING
1/4" = 1'-0"

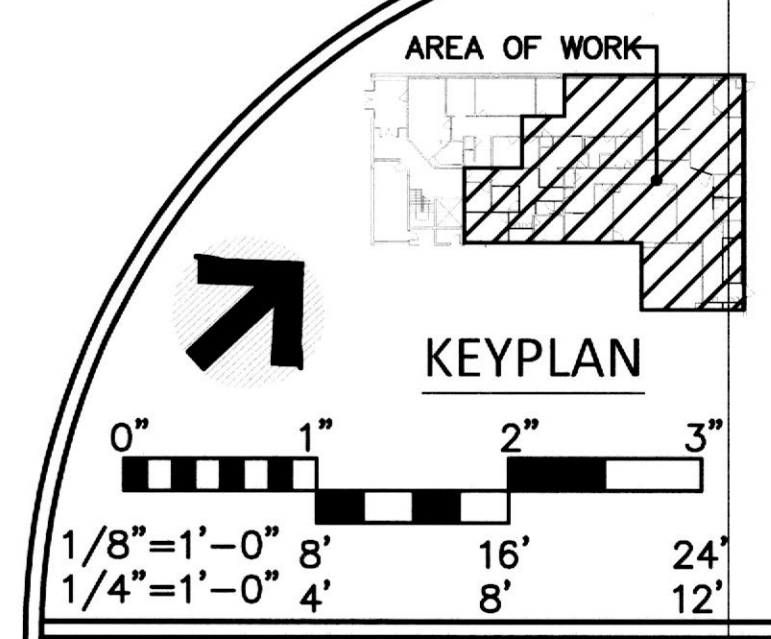
TAG#	DESCRIPTION	ROUGH IN PIPE CONNECTION SIZES NPS				NOTES
		CW	HW	SAN	VENT	
P-1	COUNTERTOP EXAM SINK	1/2	1/2	2	2	1
P-2	SURGEON SCRUB SINK	1/2	1/2	2	2	1
P-3	SHOWER	1/2	1/2	2	2	1

NOTES
1 REFER TO SPECIFICATIONS FOR FURTHER DETAILS



- DRAWING NOTES**
- ETR RE-CIRCULATING HOT WATER
 - ETR 110 F DOMESTIC HOT WATER
 - ETR DOMESTIC COLD WATER
 - ETR 140 F DOMESTIC HOT WATER
 - ETR DOMESTIC WATER PIPING TO EXISTING FIXTURES
 - ETR WH IN THIS ROOM. ETR ALL PIPING IN THIS ROOM
 - NEW CLINICAL SINK. PIPE 3/4" CW AND 1/2" HW DOWN IN WALL CAVITY TO SINK. PROVIDE THERMOSTATIC MIXING VALVE. REFER TO PIPING DETAIL A
 - ETR LAVATORY
 - ETR TOILET
 - ETR SCRUB SINK
 - ETR BALANCING VALVE
 - NEW SCRUB SINK. PIPE 3/4" CW AND 1/2" HW DOWN IN WALL CAVITY TO SINK. PROVIDE THERMOSTATIC MIXING VALVE. REFER TO PIPING DETAIL B
 - NEW SHOWER. PIPE 1/2" CW AND 1/2" HW DOWN IN WALL CAVITY TO SHOWER. PROVIDE THERMOSTATIC MIXING VALVE. REFER TO PIPING DETAIL C

- GENERAL NOTES**
- ALL PIPE SIZES ARE IN INCHES UNLESS OTHERWISE NOTED



DOMESTIC WATER PIPING

REVISIONS		DRAWING NO.
REV#	DATE DESCRIPTION	
-	10/20/17 PERMIT SET	P-104.00

SHEET 6 OF 6

DATE DRAWN BY
10/20/17 JLM
JOB NUMBER ORDERED BY
11241 JLM