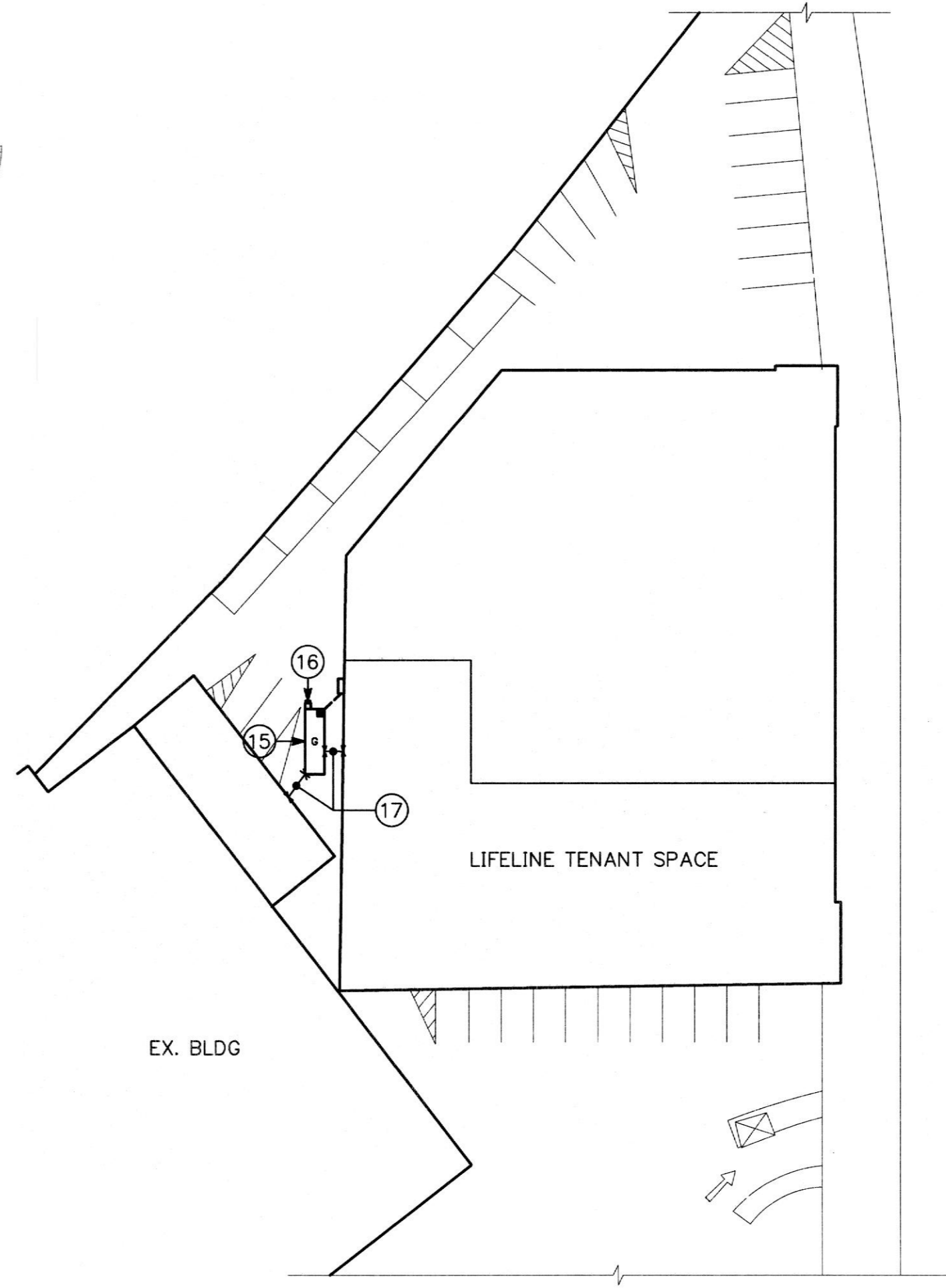


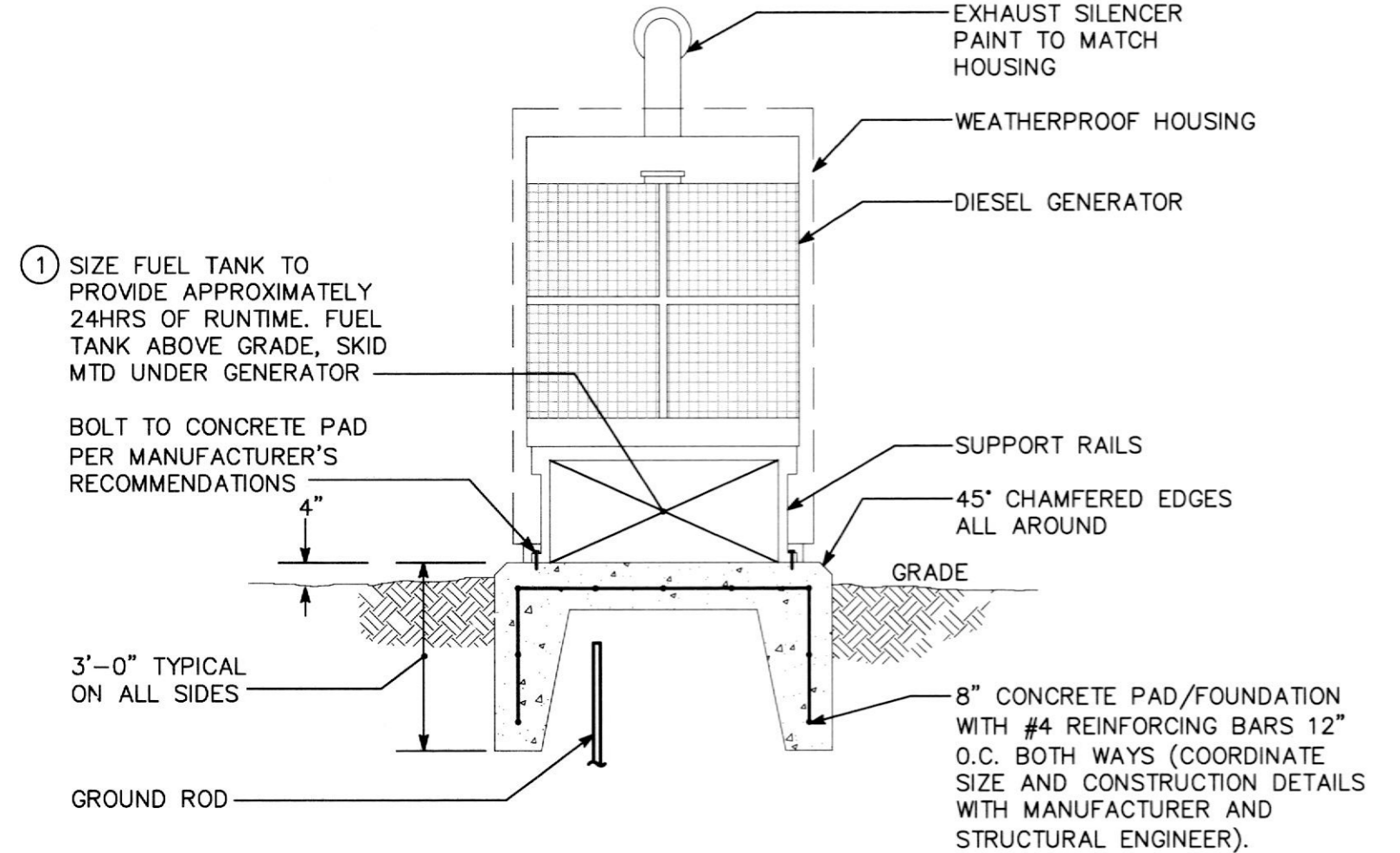
1 PART PLAN - POWER
E103 SCALE: 1/4"=1'-0"



1 SITE PLAN - ELECTRICAL
E103 NO SCALE

DRAWING NOTES:

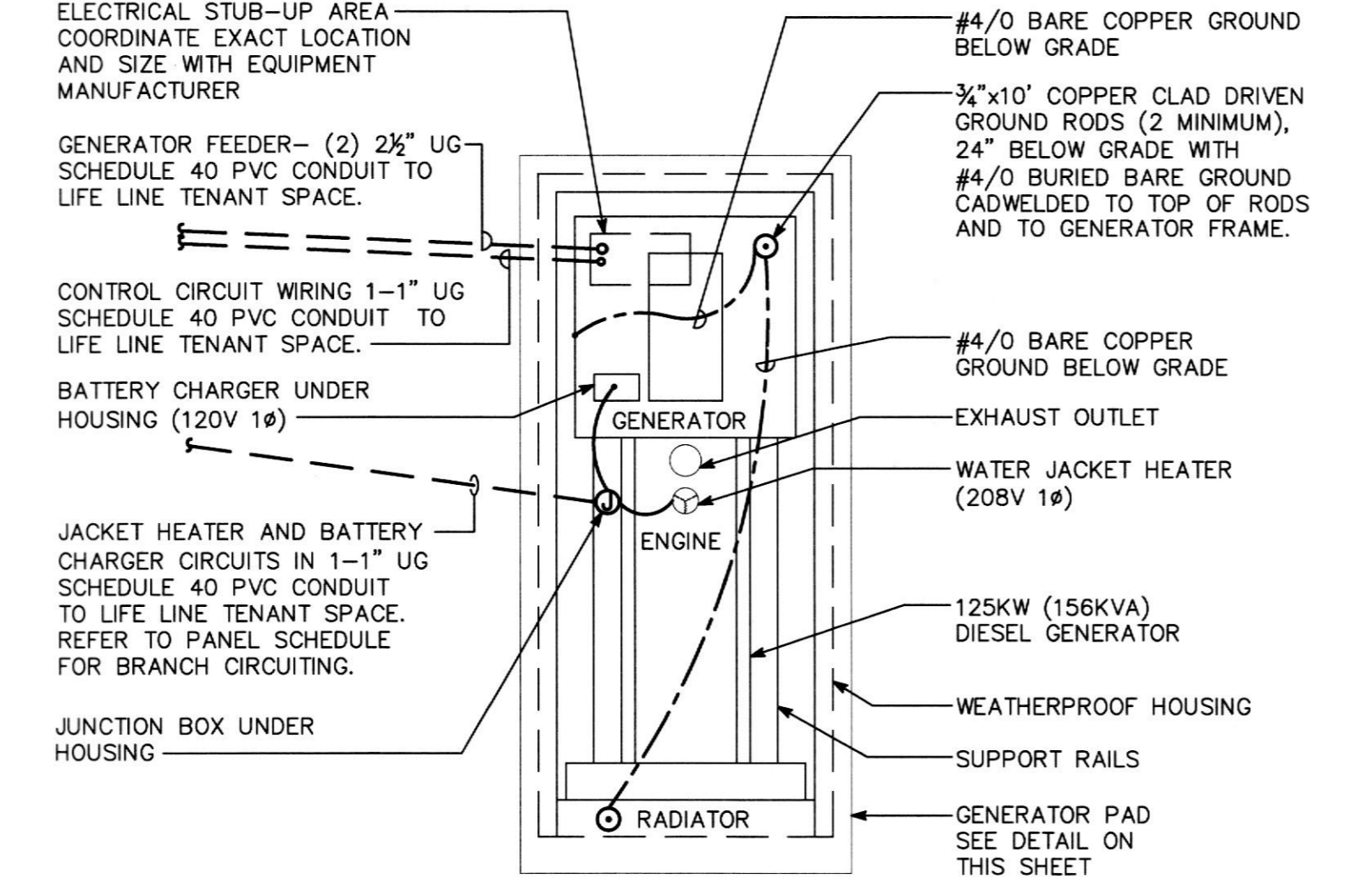
- ALL ELECTRICAL ITEMS IN THIS AREA ARE EXISTING TO REMAIN UNLESS SHOWN OR OTHERWISE NOTED.
- NURSE CALL DEVICE TO MATCH EXISTING ONSITE DEVICES. CONNECT TO EXISTING "EXPEDITORY" SYSTEM AS REQUIRED. REFER TO ARCHITECTURAL ELEVATIONS FOR MOUNTING HEIGHTS.
- POWER ASSISTED DOOR AND PUSHBUTTON FURNISHED BY OTHERS AND INSTALLED BY ELECTRICAL CONTRACTOR. COORDINATE REQUIREMENTS WITH VENDOR PRIOR TO ROUGH-IN. REFER TO ARCHITECTURAL ELEVATIONS FOR PUSHBUTTON LOCATION.
- ALL ELECTRICAL EQUIPMENT, CONDUIT, WIRE, ETC. IN THIS ROOM SHALL BE INSTALLED PER NEC AND LOCAL BUILDING CODES. FURNISH AND INSTALL ELECTRICAL ITEMS PER NEC AND LOCAL BUILDING CODES.
- OXYGEN CABINET - MOUNT FLUSH IN WALL AND MAKE FINAL CONNECTIONS. REFER TO VENDORS SPECIFICATIONS FOR SIZE OF JUNCTION BOX.
- PROVIDE A FLUSH MOUNTED JUNCTION BOX WITH 3/4" CONDUIT TO CEILING SPACE FOR LOW VOLTAGE OXYGEN EQUIPMENT WIRING. EXTEND TO NURSE STATION. COORDINATE LOCATION AND ROUTING IN FIELD WITH VENDOR PRIOR TO ROUGH-IN.
- VACUUM PUMP - 2 @ 2HP, 208V, 3Ø. PROVIDE A 3Ø30A NON FUSED SAFETY SWITCH FOR VACUUM PUMP. COORDINATE LOCATION AND ALL ELECTRICAL REQUIREMENTS WITH EQUIPMENT VENDOR AND MANUFACTURER PRIOR TO ROUGH-IN.
- PROVIDE AND INSTALL NEMA 3R PULL/JUNCTION BOX, SIZED PER NEC, MOUNTED MINIMUM OF 12" ABOVE GRADE FOR GENERATOR CONDUITS. LOCATE IN FIELD.
- PROVIDE NEW FIRE ALARM DEVICE TO MATCH EXISTING BASE BUILDING SYSTEM. CONNECT TO EXISTING SYSTEM AS REQUIRED AND PER ALL LOCAL/NATIONAL CODES.
- APPROXIMATE ROUTING OF DIRECT BURIED GENERATOR CONDUITS. COORDINATE EXACT ROUTING IN FIELD WITH BUILDING OWNER. REFER TO POWER RISER DIAGRAM FOR ADDITIONAL INFORMATION.
PROVIDE THE FOLLOWING DIRECT BURIED SCHEDULE 40 PVC CONDUITS FROM GENERATOR TO ELECTRIC ROOM/ATS (TRANSITION TO WEATHERTIGHT EMT ABOVE GRADE) AND CONTINUE THROUGH BUILDING:
 - (2) 2 1/2" CONDUIT (GENERATOR FEEDER)
 - 1" CONDUIT (GENERATOR ANNUNCIATOR)
 - 1" CONDUIT (BATTERY CHARGER/BLOCK HEATER)
 - 1" CONDUIT (ATS START CONTACTS/CONTROL)
- NEW AUTOMATIC TRANSFER SWITCH (ATS) = 225A, 600V, 5/N.
- PROVIDE REMOTE GENERATOR STATUS ANNUNCIATOR PANEL AT CONSTANTLY MONITORED LOCATION. FINAL LOCATION TO BE DETERMINED IN FIELD.
- PROVIDE GENERATOR BATTERY CHARGER AND BLOCK HEATER CIRCUITS TO PANEL EP. REFER TO SHEET E104.00 FOR PANEL SCHEDULES AND DESIGNATED CIRCUITS. CONNECT TO GENSET AS REQUIRED.
- PROVIDE A JUNCTION BOX FOR OXYGEN MASTER ALARM PANEL. COORDINATE ELECTRICAL REQUIREMENTS IN FIELD WITH OXYGEN VENDOR.
- APPROXIMATE LOCATION OF NEW 125KW DIESEL GENERATOR. REFER TO POWER RISER DIAGRAM AND GENERATOR DETAILS. PROVIDE BOLLARD PROTECTION AROUND GENERATOR. SPACE BOLLARDS TO MEET MINIMUM NEC AND MANUFACTURER CLEARANCE REQUIREMENTS.
- PROVIDE (MUSHROOM STYLE) MOMENTARY PUSHBUTTON STATION WITHIN WEATHERPROOF POLYCARBONATE ENCLOSURE TO SHUT DOWN GENERATOR IN EMERGENCY. BUTTON TO BE LABELED "EMERGENCY GEN SET SHUTDOWN". LOCATE WITHIN 25' OF GENERATOR.
- MAINTAIN 60" FROM ALL BUILDING STRUCTURES.



GENERATOR PAD
NO SCALE

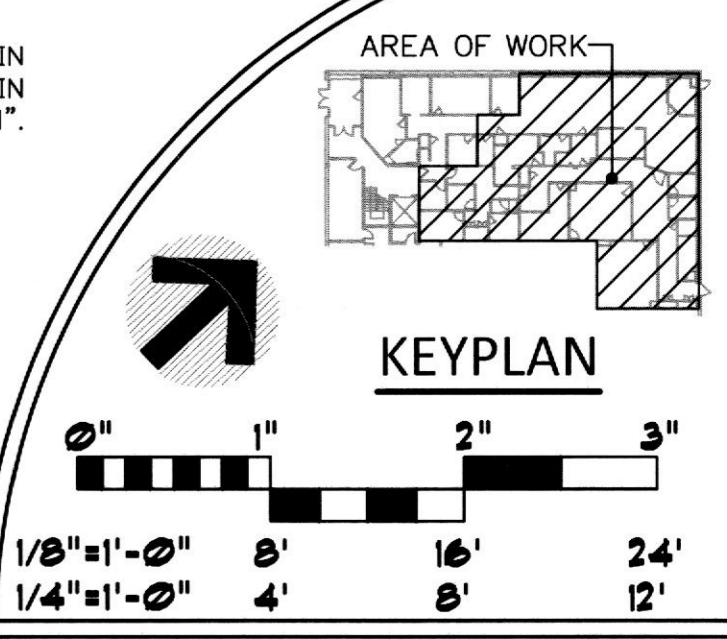
GENERATOR PAD NOTES

- PROVIDE LEAK DETECTION MONITORING SYSTEM WITHIN SUB-BASE TANK AND EXTEND CONTROL WIRING TO THE FIRE ALARM CONTROL PANEL. A LEAK SHALL SIGNAL A TROUBLE LIGHT WITHIN THE FIRE ALARM CONTROL PANEL.



GENERATOR CONNECTIONS
NO SCALE

NOTE:
REFER TO PLAN FOR CONDUIT ROUTING AND MANUFACTURER'S PRINTED INSTRUCTIONS FOR CONDUIT STUB UP AREA.



POWER PART PLAN, ELECTRICAL SITE PLAN AND DETAILS

REVISIONS		DRAWING NO. E103.00
REV#	DATE	
-	10/20/17	PERMIT SET
DATE DRAWN BY 10/20/17 JCW		SHEET OF 5
JOB NUMBER CHECKED BY 112.41 MSW		

ISSUED FOR BUILDING PERMIT
 NEW YORK STATE ENGINEERS & ARCHITECTS
 LICENSED PROFESSIONAL ENGINEER
 JOHN P. W. CONSULTING ENGINEER
 101 SOUNDA BLVD.
 WEST LAKE, NY 10992
 914.412.2868 / F. 914.251.9411
dpce
 TENANT RENOVATIONS FOR:
LIFELINE ACCESS CENTER
 1733 Eastchester Road
 Bronx, NY 10461
Lifeline
 Vascular Access
In Sync
 ARCHITECTURAL DESIGNS, INC.
 1215 Old Poughkeepsie Road Whiteford, MD 21160
 Office 410-452-8006 Fax 410-452-8046
IAAD
 WDC# 17-52