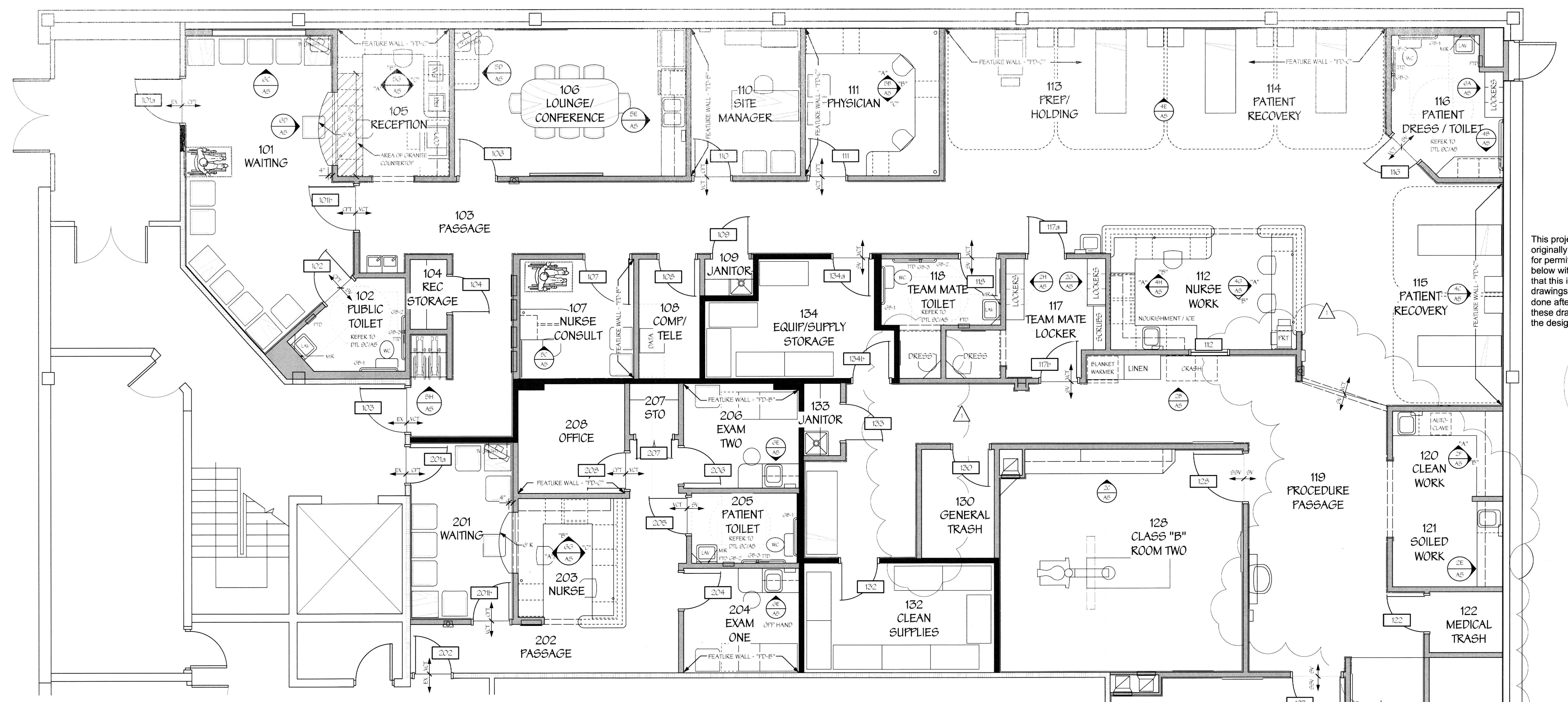


ISSUED FOR BUILDING PERMIT

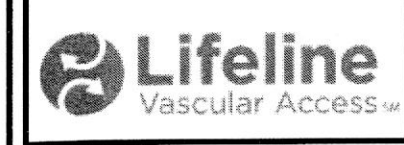


This project was designed in 2013 and was originally signed and sealed and submitted for permit on or about 8/20/13. The stamp below with the current date is to document that this is a record copy of those drawings. These represent no new work done after the construction done based on these drawings and this is ONLY certifying the design work done in 2013.

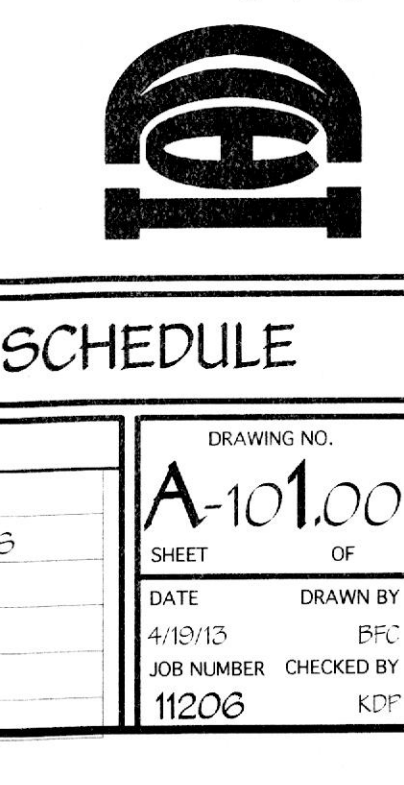


Richard J. Stern, P.E.
Mechanical, Electrical
2741 Furnace Road
Falcon, PA 17322
Phone: 717-891-6026

TENANT RENOVATIONS FOR:
Access Center
1735 Eastchester Road
Bronx, NY 10461



In Sync
ARCHITECTURAL DESIGN, INC.
Whiteford, MD 21150
Office 410-482-5046
Fax 410-482-5046



ROOM FINISH SCHEDULE:

Room #	Scheduled Name	Floor Fin	Base Type	Wall Fin	Ceiling Type	Ceiling Ht	Trim	Special	Note
101	WAITING	CFT	KS	PT-A	AC	8'-0"	ALUM		
102	PUBLIC TOILET	SV	SV	TYPE ONE*	AC	8'-0"	ALUM		* 82" HIGH WAINCOT / USE WK_CWP
103	PASSAGE	VCT	KC	PT-A	AC	8'-0"	ALUM		
104	RECEIVING STORAGE	VCT	KC	PT-A	AC	8'-0"	ALUM		
105	RECEPTION	VCT	KC	PT-A	AC	8'-0"	ALUM		
106	LOUNGE/CONFERENCE	VCT	KC	PT-A	AC	8'-0"	ALUM		
107	NURSE CONSULT	VCT	KC	PT-A	AC	8'-0"	ALUM		NOTE #1
108	COMPUTER/TELEPHONE	VCT	KC	PT-A	AC	8'-0"	ALUM		
109	JANITOR	VCT	KC	PT-A	AC	8'-0"	ALUM		
110	SITE MANAGER	VCT	KC	PT-A	AC	8'-0"	ALUM		
111	PHYSICIAN	CFT	KS	PT-A	AC	8'-0"	ALUM		NOTE #1
112	NURSE WORK	VCT	KC	PT-A	AC	8'-0"	ALUM		
113	PREP/HOLDING	VCT	KC	PT-A	AC	8'-0"	ALUM		NOTE #1
114	PATIENT RECOVERY	VCT	KC	PT-A	AC	8'-0"	ALUM		NOTE #1
115	PATIENT RECOVERY	VCT	KC	PT-A	AC	8'-0"	ALUM		NOTE #1
116	PATIENT DRESS / TOILET	SV	SV	TYPE ONE*	AC	8'-0"	ALUM		* 82" HIGH WAINCOT / USE WK_CWP
117	TEAM MATE LOCKER	VCT	KC	PT-A	AC	8'-0"	ALUM		
118	TEAM MATE TOILET	SV	SV	TYPE ONE*	AC	8'-0"	ALUM		* 82" HIGH WAINCOT / USE WK_CWP
119	PROCEDURE PASSAGE	SV	SV	PT-A	AC-1	8'-0"	ALUM		
120	CLEAN WORK	SV	SV	PT-A	AC-1	8'-0"	ALUM		
121	SOILED WORK AREA	SV	SV	PT-A	AC	8'-0"	ALUM		
122	MEDICAL TRASH	SV	SV	PT-A	AC	8'-0"	ALUM		
123	DELETE / KEV 1								
124	RAMP AND EXIT	SV	SV	PT-A	AC-1	8'-0"	ALUM		
125	STORAGE	SV	SV	PT-A	AC	8'-0"	ALUM		
126	DELETE / KEV 1								
127	CLASS "B" ROOM ONE	SV	SV	PT-D*	QWB/PT-C	8'-0"	ALUM		*EFCO / ECKURABLE
128	CLASS "B" ROOM TWO	SV	SV	PT-D*	QWB/PT-C	8'-0"	ALUM		*EFCO / ECKURABLE
129	DELETE / KEV 1								
130	GENERAL TRASH	SV	SV	PT-A	AC	8'-0"	ALUM		
131	DELETE / KEV 1								
132	CLEAN SUPPLIES	SV	SV	PT-A	AC-1	8'-0"	ALUM		
133	JANITOR	SV	SV	PT-A	AC	8'-0"	ALUM		
134	EQUIPMENT/SUPPLY STORAGE	SV	SV	PT-A	AC	8'-0"	ALUM		
201	WAITING	CFT	KS	PT-A	AC	8'-0"	ALUM		
202	PASSAGE	VCT	KC	PT-A	AC	8'-0"	ALUM		
203	NURSE	VCT	KC	PT-A	AC	8'-0"	ALUM		
204	EXAM ONE	VCT	KC	PT-A	AC	8'-0"	ALUM		NOTE #1
205	PATIENT TOILET	SV	SV	TYPE ONE*	AC	8'-0"	ALUM		* 82" HIGH WAINCOT / USE WK_CWP
206	EXAM TWO	VCT	KC	PT-A	AC	8'-0"	ALUM		NOTE #1
207	STORAGE	VCT	KC	PT-A	AC	8'-0"	ALUM		
208	OFFICE	CFT	KS	PT-A	AC	8'-0"	ALUM		NOTE #1

NOTES:
ALL FINISHED SHALL BE IN ACCORDANCE WITH IBC 2012.
CLASS B PLANE (RATED 2-1/2 HRS)
SMOKE DEVELOPED 0-45"
ALL FLOOR FINISHES SHALL BE SLIP RESISTANT IN ACCORDANCE WITH IBC 1003.2.2

NOTE #1
REFER TO FLOOR PLAN FOR FEATURE WALL LOCATIONS. REFER TO WALL FINISH FOR FEATURE WALL PAINT COLOR.

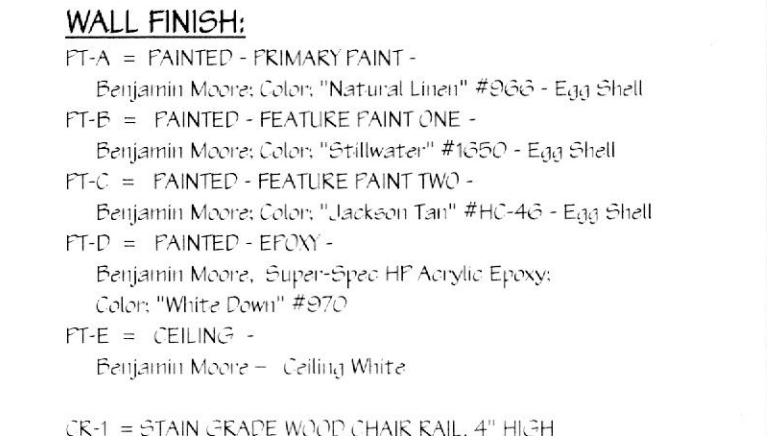
ROOM FINISH MATERIALS:

FLOOR FINISH:
CFT = CARPET - Shaw Contract Group Style Envision Tile #52545
CWP = Carpeting - Sherry #42555
SV = SHEET VINYL - Shaw L2 Natural
VCT = VCT - Shaw Contract Group Style Envision Tile #52545
QWB = QUARTZ WEAR BOARD - Armstrong
PT-A = PAINTED - FEATRE PAINT TWO
PT-C = PAINTED - FEATRE PAINT TWO
PT-D = PAINTED - FEATRE PAINT TWO
PT-E = PAINTED - FEATRE PAINT TWO
PT-F = PAINTED - FEATRE PAINT TWO
PT-G = PAINTED - FEATRE PAINT TWO
PT-H = PAINTED - FEATRE PAINT TWO
PT-I = PAINTED - FEATRE PAINT TWO
PT-J = PAINTED - FEATRE PAINT TWO
PT-K = PAINTED - FEATRE PAINT TWO
PT-L = PAINTED - FEATRE PAINT TWO
PT-M = PAINTED - FEATRE PAINT TWO
PT-N = PAINTED - FEATRE PAINT TWO
PT-O = PAINTED - FEATRE PAINT TWO
PT-P = PAINTED - FEATRE PAINT TWO
PT-Q = PAINTED - FEATRE PAINT TWO
PT-R = PAINTED - FEATRE PAINT TWO
PT-S = PAINTED - FEATRE PAINT TWO
PT-T = PAINTED - FEATRE PAINT TWO
PT-U = PAINTED - FEATRE PAINT TWO
PT-V = PAINTED - FEATRE PAINT TWO
PT-W = PAINTED - FEATRE PAINT TWO
PT-X = PAINTED - FEATRE PAINT TWO
PT-Y = PAINTED - FEATRE PAINT TWO
PT-Z = PAINTED - FEATRE PAINT TWO

BASE TYPE:
KS = KUBERK BRACKET - Kupper TP 77122 1/2"
KC = KUBERK CORE - Kupper TP 77122 1/2"
TK = TRIM - Kupper Color "Black" 1/2"
AC = ALUMINUM CHANNEL - Kupper TP 77122 1/2"
AC-1 = ALUMINUM CHANNEL - Kupper TP 77122 1/2"
AC-2 = ALUMINUM CHANNEL - Kupper TP 77122 1/2"
AC-3 = ALUMINUM CHANNEL - Kupper TP 77122 1/2"
AC-4 = ALUMINUM CHANNEL - Kupper TP 77122 1/2"
AC-5 = ALUMINUM CHANNEL - Kupper TP 77122 1/2"
AC-6 = ALUMINUM CHANNEL - Kupper TP 77122 1/2"
AC-7 = ALUMINUM CHANNEL - Kupper TP 77122 1/2"
AC-8 = ALUMINUM CHANNEL - Kupper TP 77122 1/2"
AC-9 = ALUMINUM CHANNEL - Kupper TP 77122 1/2"
AC-10 = ALUMINUM CHANNEL - Kupper TP 77122 1/2"
AC-11 = ALUMINUM CHANNEL - Kupper TP 77122 1/2"
AC-12 = ALUMINUM CHANNEL - Kupper TP 77122 1/2"
AC-13 = ALUMINUM CHANNEL - Kupper TP 77122 1/2"
AC-14 = ALUMINUM CHANNEL - Kupper TP 77122 1/2"
AC-15 = ALUMINUM CHANNEL - Kupper TP 77122 1/2"
AC-16 = ALUMINUM CHANNEL - Kupper TP 77122 1/2"
AC-17 = ALUMINUM CHANNEL - Kupper TP 77122 1/2"
AC-18 = ALUMINUM CHANNEL - Kupper TP 77122 1/2"
AC-19 = ALUMINUM CHANNEL - Kupper TP 77122 1/2"
AC-20 = ALUMINUM CHANNEL - Kupper TP 77122 1/2"

WALL FINISH TYPES
SEE FINISH MATERIALS LISTING

TYPICAL HALL



WALL FINISH:

PT-A = PAINTED - FEATRE PAINT ONE
PT-B = PAINTED - FEATRE PAINT ONE
PT-C = PAINTED - FEATRE PAINT ONE
PT-D = PAINTED - FEATRE PAINT ONE
PT-E = PAINTED - FEATRE PAINT ONE
PT-F = PAINTED - FEATRE PAINT ONE
PT-G = PAINTED - FEATRE PAINT ONE
PT-H = PAINTED - FEATRE PAINT ONE
PT-I = PAINTED - FEATRE PAINT ONE
PT-J = PAINTED - FEATRE PAINT ONE
PT-K = PAINTED - FEATRE PAINT ONE
PT-L = PAINTED - FEATRE PAINT ONE
PT-M = PAINTED - FEATRE PAINT ONE
PT-N = PAINTED - FEATRE PAINT ONE
PT-O = PAINTED - FEATRE PAINT ONE
PT-P = PAINTED - FEATRE PAINT ONE
PT-Q = PAINTED - FEATRE PAINT ONE
PT-R = PAINTED - FEATRE PAINT ONE
PT-S = PAINTED - FEATRE PAINT ONE
PT-T = PAINTED - FEATRE PAINT ONE
PT-U = PAINTED - FEATRE PAINT ONE
PT-V = PAINTED - FEATRE PAINT ONE
PT-W = PAINTED - FEATRE PAINT ONE
PT-X = PAINTED - FEATRE PAINT ONE
PT-Y = PAINTED - FEATRE PAINT ONE
PT-Z = PAINTED - FEATRE PAINT ONE

CEILING TYPE:

AC = TYPICAL ACCOUSTICAL TILE (2x4)
AC-1 = SCRIBABLE ACCOUSTICAL TILE (2x4)
AC-2 = SCRIBABLE ACCOUSTICAL TILE (2x4)
AC-3 = SCRIBABLE ACCOUSTICAL TILE (2x4)
AC-4 = SCRIBABLE ACCOUSTICAL TILE (2x4)
AC-5 = SCRIBABLE ACCOUSTICAL TILE (2x4)
AC-6 = SCRIBABLE ACCOUSTICAL TILE (2x4)
AC-7 = SCRIBABLE ACCOUSTICAL TILE (2x4)
AC-8 = SCRIBABLE ACCOUSTICAL TILE (2x4)
AC-9 = SCRIBABLE ACCOUSTICAL TILE (2x4)
AC-10 = SCRIBABLE ACCOUSTICAL TILE (2x4)
AC-11 = SCRIBABLE ACCOUSTICAL TILE (2x4)
AC-12 = SCRIBABLE ACCOUSTICAL TILE (2x4)
AC-13 = SCRIBABLE ACCOUSTICAL TILE (2x4)
AC-14 = SCRIBABLE ACCOUSTICAL TILE (2x4)
AC-15 = SCRIBABLE ACCOUSTICAL TILE (2x4)
AC-16 = SCRIBABLE ACCOUSTICAL TILE (2x4)
AC-17 = SCRIBABLE ACCOUSTICAL TILE (2x4)
AC-18 = SCRIBABLE ACCOUSTICAL TILE (2x4)
AC-19 = SCRIBABLE ACCOUSTICAL TILE (2x4)
AC-20 = SCRIBABLE ACCOUSTICAL TILE (2x4)

PLASTIC LAMINATE:

PLAS LAM "A" - COUNTERTOPS - Formica 2824-44
PLAS LAM "B" - CABINETS - Formica 2824-44
PLAS LAM "C" - CABINETS - Formica 2824-44
PLAS LAM "D" - CABINETS - Formica 2824-44
PLAS LAM "E" - CABINETS - Formica 2824-44
PLAS LAM "F" - CABINETS - Formica 2824-44
PLAS LAM "G" - CABINETS - Formica 2824-44
PLAS LAM "H" - CABINETS - Formica 2824-44
PLAS LAM "I" - CABINETS - Formica 2824-44
PLAS LAM "J" - CABINETS - Formica 2824-44
PLAS LAM "K" - CABINETS - Formica 2824-44
PLAS LAM "L" - CABINETS - Formica 2824-44
PLAS LAM "M" - CABINETS - Formica 2824-44
PLAS LAM "N" - CABINETS - Formica 2824-44
PLAS LAM "O" - CABINETS - Formica 2824-44
PLAS LAM "P" - CABINETS - Formica 2824-44
PLAS LAM "Q" - CABINETS - Formica 2824-44
PLAS LAM "R" - CABINETS - Formica 2824-44
PLAS LAM "S" - CABINETS - Formica 2824-44
PLAS LAM "T" - CABINETS - Formica 2824-44
PLAS LAM "U" - CABINETS - Formica 2824-44
PLAS LAM "V" - CABINETS - Formica 2824-44
PLAS LAM "W" - CABINETS - Formica 2824-44
PLAS LAM "X" - CABINETS - Formica 2824-44
PLAS LAM "Y" - CABINETS - Formica 2824-44
PLAS LAM "Z" - CABINETS - Formica 2824-44

SPECIALTY ITEMS

BLINDS - 201 "ROCKY"
DOOR AND WALL PROTECTION (CONTACT NATIONAL ACCOUNT SALES REPRESENTATIVE INFO: CONSTRUCTION TEL: 800-334-7749)
CORNER GUARDS - InPro Outrigger #0220
DOOR GUARDS - InPro Outrigger #0220
WALL GUARDS - InPro Tempmat #0264 with Outrigger Insert
WALL PROTECTION - FRP - MAXITE FRP "SILVER" #140
CURTAIN FABRIC - FROM 1205 AVONDA PER FOLLESTER
CURTAIN FABRIC - Tantalus Garden Park COLOR - Hawthorn
MILN MESH "Stone" (CONTACT JEFF SKELLUM @ SUGARBUCH MARKETING AND MFG: 703-505-0765)

FLOOR PLAN

REFER TO SHEET A2 FOR DIMENSIONAL PLAN
REFER TO SHEET A3 FOR CONSTRUCTION NOTES
REFER TO SHEET A4 FOR DEMOLITION PLAN
REFER TO SHEET A4 FOR FLOOR SCHEDULE
REFER TO SHEET A4 FOR CEILING

GENERAL NOTES:

ALL UNDER FLOOR PLUMBING, ROUGH-INS, DEMOLITION AND OTHER LOUD WORK SHALL BE DONE DURING OFF-HOURS AND CAREFULLY COORDINATED WITH LANDLORD TO INSURE MINIMAL DISRUPTION TO ADJACENT SPACES.
OWNER WILL PROVIDE INTERIOR SIGNAGE TO BE MOUNTED BY THE CONTRACTOR. COORDINATE WITH OWNER.
REFER TO CONSTRUCTION NOTES FOR NEW FIRE EXTINGUISHERS. A MINIMUM OF THREE FIRE EXTINGUISHERS ARE TO BE PROVIDED. CONTRACTOR TO REVIEW LOCATIONS WITH CODE OFFICIAL TO INSURE PLACEMENT OF THESE UNITS MEETS CODE REQUIREMENTS. CONTRACTOR SHALL PROVIDE ADDITIONAL FIRE EXTINGUISHERS AS MAY BE DETERMINED BY THIS REVIEW.
ALL ACCESSIBLE CONTROLS, OPERATING MECHANISMS AND HARDWARE SHALL COMPLY WITH SECTION 308 OF IBC/ANSI A117.1.

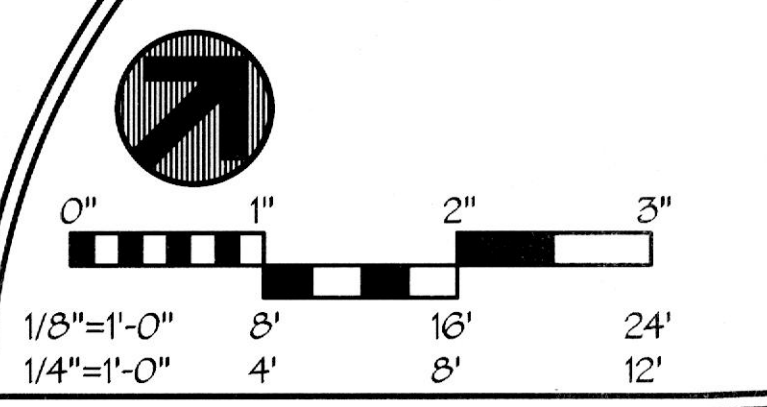
TOILET ROOM ACCESSORIES

MARK	DESCRIPTION	MODEL NO.	102 PUBLIC TOILET	116 PATIENT DRESS / TOILET	118 TEAM MATE TOILET	205 PATIENT DRESS / TOILET
PTD	PAPER TOWEL DISPENSER	B-2500	ONE	ONE	ONE	ONE
TTD	TOILET TISSUE DISPENSER	B-4268	ONE	ONE	ONE	ONE
GB-1	GRAB BAR	B-5503A23	ONE	ONE	ONE	ONE
GB-2	GRAB BAR	B-5503A42	ONE	ONE	ONE	ONE
GB-3	GRAB BAR - VERTICAL	B-5503A24	ONE	ONE	ONE	ONE
MIR	MIRROR (24"x36")	B-435-2430	ONE	ONE	ONE	ONE
TRC	TOILET SEAT COVER**	B-4221	ONE	ONE	ONE	ONE
FND	FEMINE NAPKIN DISPENSER**	B-270	ONE	ONE	ONE	ONE

** COORDINATE INSTALLATION LOCATION WITH OWNER

UNL: PROVIDE QUANTITIES OF ACCESSORIES AS NOTED AT EACH TOILET ROOM. SEE TOILET ROOM DETAILS & SECTIONS FOR MOUNTING LOCATIONS & HEIGHTS. PROVIDE ALL MISC. WALL BLOCKING REQ'D FOR INSTALLATION.

SEE CONSTRUCTION NOTE #3 FOR ADDITIONAL REQUIRED ITEMS.



FLOOR PLAN & ROOM SCHEDULE

REV #	DATE	DESCRIPTION
1	7/16/13	OWNER BUDGET REVISIONS

DRAWING NO. A-101.00
SHEET 05 OF 05
DATE 4/18/13
JOB NUMBER 11206
DRAWN BY BFC
CHECKED BY BFC
KST

NOTE: CONTRACTOR AND SUB-CONTRACTORS SHALL VISIT THIS BUILDING AND TENANT AREA AND BE FAMILIAR WITH ALL THE EXISTING CONDITIONS PRIOR TO CONTRACT AWARD