

DOOR AND FRAME SCHEDULE:

Frame #	Door Width	Door Ht	Door Thick	Door Type	Door Matl	Door Fin	Lower	Frame Type	Frame Matl	Frame Depth	Hardware	Fire Rating	Remark
101	3'-0"	7'-0"	1 3/4"	F	SC-WD	STAINED*	-	O1	ALUM	5 7/8"	A	30 MIN	"MATCH EX - NOTE #1"
102	3'-0"	7'-0"	1 3/4"	F	SC-WD	STAINED*	-	O1	ALUM	5 7/8"	B	-	"MATCH EX - NOTE #1"
103	3'-0"	7'-0"	1 3/4"	F	SC-WD	STAINED*	-	O2	HM	5 7/8"	A	30 MIN	"MATCH EX - NOTE #1"
104	3'-0"	7'-0"	1 3/4"	F	SC-WD	STAINED*	-	O1	ALUM	5 7/8"	C	-	"MATCH EX - NOTE #1"
105	3'-0"	7'-0"	1 3/4"	F	SC-WD	STAINED*	-	O1	ALUM	5 7/8"	D	-	"MATCH EX - NOTE #1"
107	3'-0"	7'-0"	1 3/4"	F	SC-WD	STAINED*	-	O1	ALUM	5 7/8"	D	-	"MATCH EX - NOTE #1"
108	3'-0"	7'-0"	1 3/4"	F	SC-WD	STAINED*	-	O1	ALUM	5 7/8"	D	-	"MATCH EX - NOTE #1"
109	3'-0"	7'-0"	1 3/4"	F	SC-WD	STAINED*	-	O1	ALUM	5 7/8"	D	-	"MATCH EX - NOTE #1"
110	3'-0"	7'-0"	1 3/4"	F	SC-WD	STAINED*	-	O1	ALUM	5 7/8"	D	-	"MATCH EX - NOTE #1"
111	3'-0"	7'-0"	1 3/4"	F	SC-WD	STAINED*	-	O1	ALUM	5 7/8"	D	-	"MATCH EX - NOTE #1"
112	3'-0"	7'-0"	1 3/4"	F	SC-WD	STAINED*	-	O1	ALUM	5 7/8"	D	-	"MATCH EX - NOTE #1"
113	3'-0"	7'-0"	1 3/4"	F	SC-WD	STAINED*	-	O1	ALUM	5 7/8"	D	-	"MATCH EX - NOTE #1"
114	3'-0"	7'-0"	1 3/4"	F	SC-WD	STAINED*	-	O1	ALUM	5 7/8"	D	-	"MATCH EX - NOTE #1"
115	3'-0"	7'-0"	1 3/4"	F	SC-WD	STAINED*	-	O1	ALUM	5 7/8"	D	-	"MATCH EX - NOTE #1"
116	3'-0"	7'-0"	1 3/4"	F	SC-WD	STAINED*	-	O1	ALUM	5 7/8"	D	-	"MATCH EX - NOTE #1"
117	3'-0"	7'-0"	1 3/4"	F	SC-WD	STAINED*	-	O1	ALUM	5 7/8"	D	-	"MATCH EX - NOTE #1"
118	3'-0"	7'-0"	1 3/4"	F	SC-WD	STAINED*	-	O1	ALUM	5 7/8"	D	-	"MATCH EX - NOTE #1"
119	3'-0"	7'-0"	1 3/4"	F	SC-WD	STAINED*	-	O1	ALUM	5 7/8"	D	-	"MATCH EX - NOTE #1"
120	3'-0"	7'-0"	1 3/4"	F	SC-WD	STAINED*	-	O1	ALUM	5 7/8"	D	-	"MATCH EX - NOTE #1"
121	3'-0"	7'-0"	1 3/4"	F	SC-WD	STAINED*	-	O1	ALUM	5 7/8"	D	-	"MATCH EX - NOTE #1"
122	3'-0"	7'-0"	1 3/4"	F	SC-WD	STAINED*	-	O1	ALUM	5 7/8"	D	-	"MATCH EX - NOTE #1"
123	3'-0"	7'-0"	1 3/4"	F	SC-WD	STAINED*	-	O1	ALUM	5 7/8"	D	-	"MATCH EX - NOTE #1"
124	4'-0"	7'-0"	1 3/4"	F	HM	PT-B	-	O1	HM	8"	L	-	"MATCH EX - NOTE #1"
125	3'-0"	7'-0"	1 3/4"	F	SC-WD	STAINED*	-	O1	ALUM	5 7/8"	D	-	"MATCH EX - NOTE #1"
126	3'-0"	7'-0"	1 3/4"	F	SC-WD	STAINED*	-	O1	ALUM	5 7/8"	D	-	"MATCH EX - NOTE #1"
127	4'-0"	7'-0"	1 3/4"	LL	SC-WD	STAINED*	-	O3	ALUM	5 7/8"	H	-	"MATCH EX - NOTE #1"
128	4'-0"	7'-0"	1 3/4"	LL	SC-WD	STAINED*	-	O3	ALUM	5 7/8"	H	-	"MATCH EX - NOTE #1"
129	3'-0"	7'-0"	1 3/4"	F	SC-WD	STAINED*	-	O1	ALUM	5 7/8"	J	-	"MATCH EX - NOTE #1"
130	3'-0"	7'-0"	1 3/4"	F	SC-WD	STAINED*	-	O1	ALUM	5 7/8"	J	-	"MATCH EX - NOTE #1"
131	3'-0"	7'-0"	1 3/4"	F	SC-WD	STAINED*	-	O1	ALUM	5 7/8"	J	-	"MATCH EX - NOTE #1"
132	3'-0"	7'-0"	1 3/4"	F	SC-WD	STAINED*	-	O2	ALUM	5 7/8"	E	45 MIN	"MATCH EX - NOTE #1"
133	3'-0"	7'-0"	1 3/4"	F	SC-WD	STAINED*	-	O1	ALUM	5 7/8"	D	-	"MATCH EX - NOTE #1"
134	3'-0"	7'-0"	1 3/4"	F	SC-WD	STAINED*	-	O2	ALUM	5 7/8"	E	45 MIN	"MATCH EX - NOTE #1"
134b	3'-0"	7'-0"	1 3/4"	F	SC-WD	STAINED*	-	O2	ALUM	5 7/8"	B	45 MIN	"MATCH EX - NOTE #1"
201a	3'-0"	7'-0"	1 3/4"	F	SC-WD	STAINED*	-	O2	HM	5 7/8"	E	30 MIN	"MATCH EX - NOTE #1"
201b	3'-0"	7'-0"	1 3/4"	SL	SC-WD	STAINED*	-	O1	ALUM	5 7/8"	B	-	"MATCH EX - NOTE #1"
202	3'-0"	7'-0"	1 3/4"	F	SC-WD	STAINED*	-	O2	HM	5 7/8"	E	30 MIN	"MATCH EX - NOTE #1"
204	3'-0"	7'-0"	1 3/4"	F	SC-WD	STAINED*	-	O1	ALUM	5 7/8"	D	-	"MATCH EX - NOTE #1"
205	3'-0"	7'-0"	1 3/4"	F	SC-WD	STAINED*	-	O1	ALUM	5 7/8"	D	-	"MATCH EX - NOTE #1"
206	3'-0"	7'-0"	1 3/4"	F	SC-WD	STAINED*	-	O1	ALUM	5 7/8"	D	-	"MATCH EX - NOTE #1"
207	2'-0"	7'-0"	1 3/4"	F	SC-WD	STAINED*	-	O1	ALUM	5 7/8"	K	-	"MATCH EX - NOTE #1"
208	3'-0"	7'-0"	1 3/4"	F	SC-WD	STAINED*	-	O1	ALUM	5 7/8"	C	-	"MATCH EX - NOTE #1"

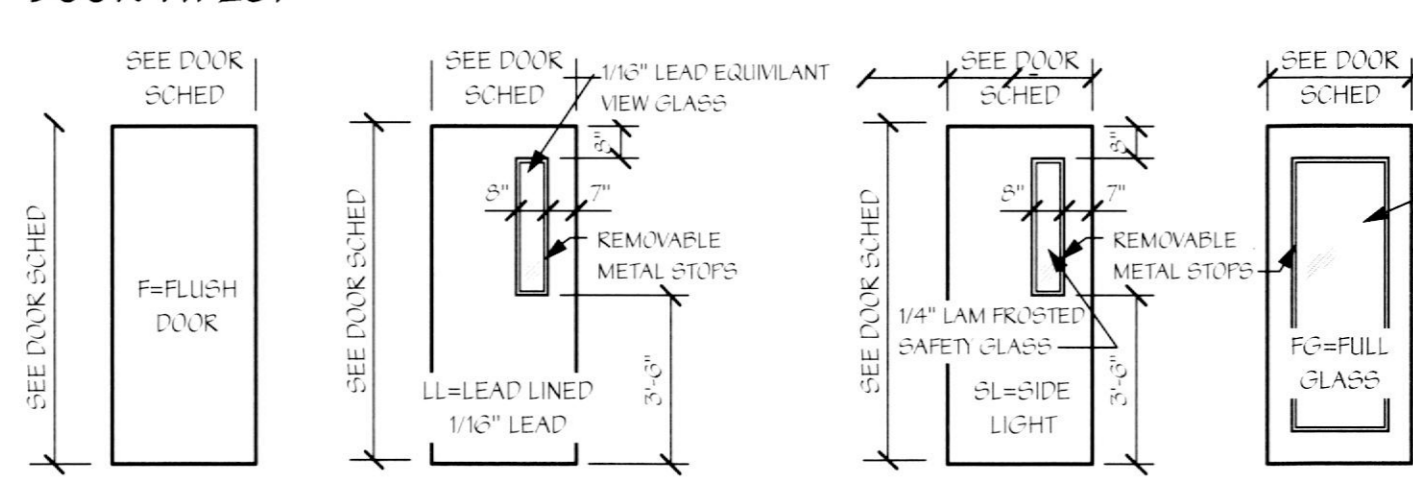
GENERAL NOTE:
ALL DOORS AND DOOR
HARDWARE SHALL COMPLY WITH
SECTION 404 OF ICC/ANSI 117.1

GENERAL NOTE:
ALL DOOR HARDWARE SHALL BE
INSTALLED IN ACCORDANCE
WITH ADA AND AWC
RECOMMENDATIONS. LEVER
LOCKS SHALL BE
INSTALLED WITH CENTER OF
LEVEL HANDLES AT 36" AFF

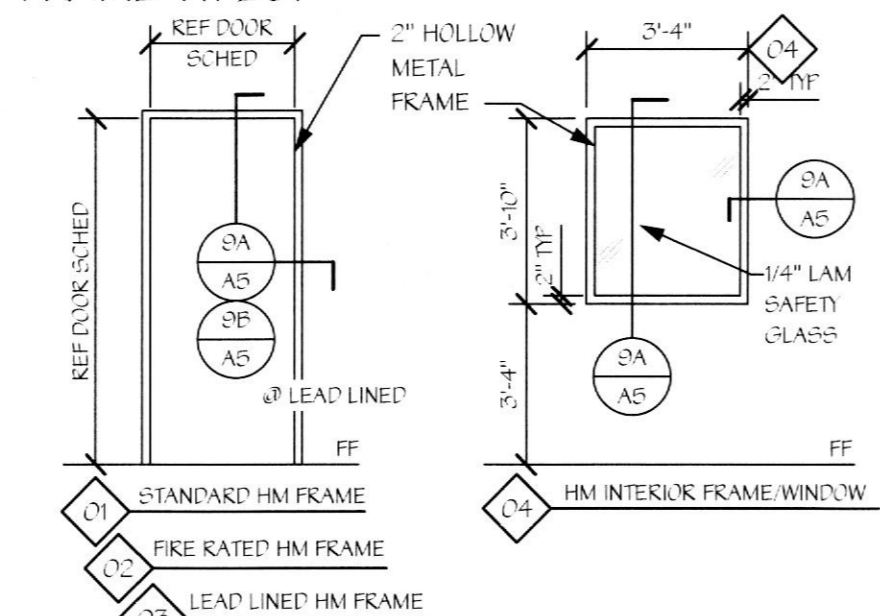
NOTE #1
DOOR AND FRAME TO MATCH EXISTING CORRIDOR
DOORS INCLUDING HARDWARE, FINISH ON PUBLIC
SIDE OF DOOR FACE AND DOOR FRAME.

ALUMINUM DOOR FRAMES:
ALL INTERIOR DOORS SHALL HAVE ALUMINUM DOOR FRAMES EQUAL TO K-SYSTEM -
CONVENTIONAL FREE-STANDING ALUMINUM DOOR FRAMING SYSTEM BY VERSTRAC (A
DIVISION OF AMERICAN DOOR PRODUCTS). FRAMES TO BE CLEAR ANODIZED ALUMINUM.

DOOR TYPES:



FRAME TYPES:



ALL SAFETY GLASS SHALL COMPLY WITH THE CPSC 16 CFR, PART 1201, CRITERIA 1 AND SHALL BE IN ACCORDANCE WITH SECTION 2403 OF THE UBCS.

HARDWARE TYPES:

GENERAL HARDWARE NOTE: ALL COMPONENTS OF HARDWARE SHALL BE PROVIDED FOR A COMPLETELY
FUNCTIONING HARDWARE INSTALLATION. ALL COMPONENTS SHALL COMPLY WITH LOCAL, STATE AND
FEDERAL (ADA) DISABILITY REQUIREMENTS. ALL EXCESS DOORS SHALL BE READILY OPENABLE FROM
THE SIDE FROM WHICH EXGRESS IS TO BE MADE WITHOUT A KEY OR SPECIAL KNOWLEDGE OR EFFORT.
NEW DOORS SHALL BE KEVED TO MATCH THE EXISTING TENANT AND BUILDING KEYING SYSTEM.

ALL LOCKSETS SHALL BE EQUAL TO THE D SERIES, LEVER HANDLE LOCKSETS (US20D FINISH) BY
SCHLAGE, ATHENS LEVER DESIGN AND FULL SIZE INTERCHANGEABLE CORES. HARDWARE SHALL BE
INSTALLED PER MANUFACTURER'S RECOMMENDATIONS FOR THE VARIOUS CONDITIONS ENCOUNTERED.

TYPE "A": FUNCTION N5050D (OFFICE FUNCTION), ELECTRIC STRIKE EQUAL TO THE 5000 ELECTRIC
STRIKE SERIES BY HES INNOVATIONS. HINGES AND DOOR STOP. INSTALL PER MANUFACTURER'S
RECOMMENDATIONS. PROVIDE MAGIC-FORCE AUTOMATIC POWER OPENER, BY STANLEY. (COORDINATE
TIMING WITH OWNER). OPENER TO HAVE "SENTRIX 95" OVERHEAD SENSOR DESIGNED TO KEEP DOOR
FROM CLOSING WHEN SOMEONE IS IN THE DOOR OPENING OR OPENING WHEN SOMEONE IS IN THE
AREA OF THE DOOR SWING. REFER TO DETAIL 504/4.

TYPE "B": OTHER LOCK EQUAL TO TRIL03V D12775 BY ALARM LOCK. LOCK SHALL BE PROVIDED WITH
PASSAGE MODE FUNCTION. CORBIN DC3200 SERIES SURFACE APPLIED DELAYED ACTION DOOR CLOSER
(COORDINATE TIMING WITH OWNER). 4 1/2" BUTT HINGES (MINIMUM 3 PER LEAF) BY STANLEY. WALL
STOP BY ROCKWOOD.

TYPE "C": FUNCTION N5050D (OFFICE FUNCTION). 4 1/2" BUTT HINGES (MINIMUM 3 PER LEAF) BY
STANLEY. WALL STOP BY ROCKWOOD.

TYPE "D": FUNCTION N1015 (PASSAGE FUNCTION). 4 1/2" BUTT HINGES (MINIMUM 3 PER LEAF) BY
STANLEY. WALL STOP BY ROCKWOOD.

TYPE "E": FUNCTION N5050D (OFFICE FUNCTION). CORBIN DC3200 SERIES SURFACE APPLIED DOOR
CLOSER, 4 1/2" BUTT HINGES (MINIMUM 3 PER LEAF) BY STANLEY. WALL STOP BY ROCKWOOD.

TYPE "F": FUNCTION N1045 (FRIVACY FUNCTION). 4 1/2" BUTT HINGES (MINIMUM 3 PER LEAF) BY
STANLEY. WALL STOP BY ROCKWOOD.

TYPE "G": FLUSH PLATE "100" BY LINDSTRON ON "FLUSH" SIDE AND FULL PLATE "100X10" BY
LINDSTRON ON "FULL" SIDE OF DOOR. KICKPLATE #37 13"X48" US20D BY BALDWIN HARDWARE CORP.
4 1/2" BUTT HINGES (MINIMUM 3 PER LEAF) BY STANLEY. WALL STOP BY ROCKWOOD. MAGIC-FORCE
AUTOMATIC POWER OPENER, BY STANLEY. (COORDINATE TIMING WITH OWNER). OPENER TO HAVE
"SENTRIX 95" OVERHEAD SENSOR DESIGNED TO KEEP DOOR FROM CLOSING WHEN SOMEONE IS IN
THE DOOR OPENING OR OPENING WHEN SOMEONE IS IN THE AREA OF THE DOOR SWING. POWER
OPENER SHALL BE PROVIDED WITH OPTION THAT ACTIVATES OPENER WHEN LEAF IS OPENED MANUALLY.
COORDINATE OPENING SPEED SETTINGS WITH OWNER. REFER TO PLAN AND NOTE #29 FOR LOCATION OF
FLUSH PADDLES TO OPERATE AUTOMATIC DOOR OPENER.

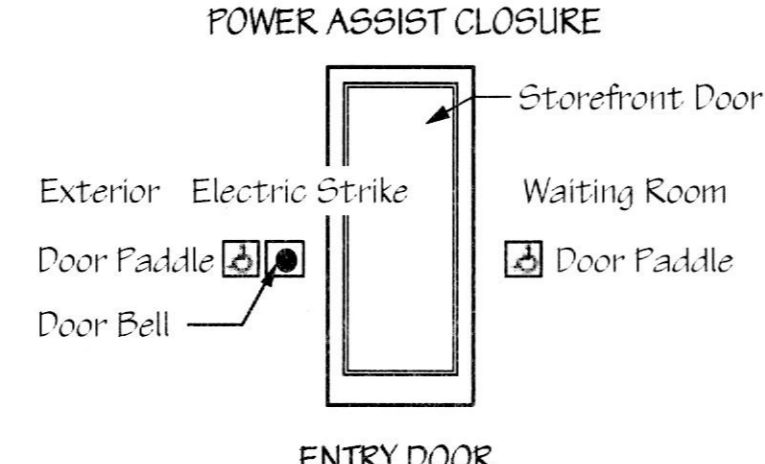
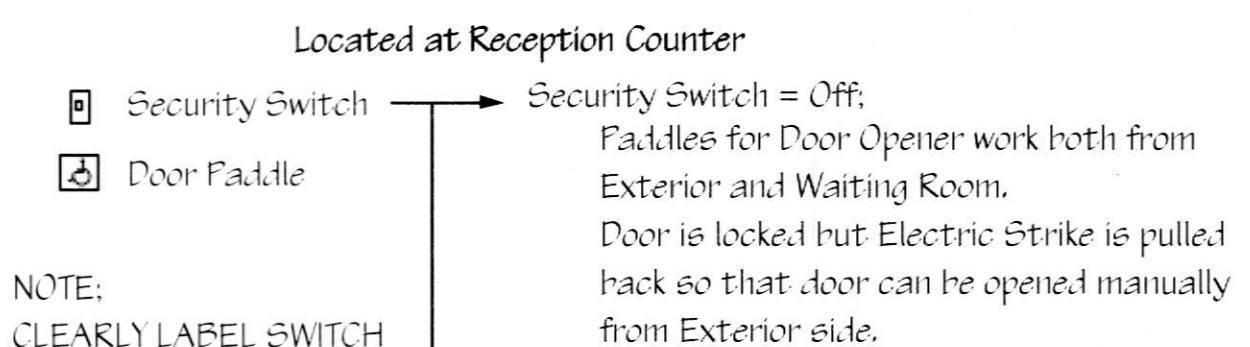
TYPE "H": PROVIDE FLUSH/PULL LATCH EQUAL TO HL-3 PUSH/PULL LATCH BY GUNN-JOHNSON
(US20D FINISH) IN MOUNTING POSITION "C" WITH 5" BACKSET AND KEVED DEAD BOLT WITH INTERIOR
THUMB TURN MOUNTED ABOVE (CAREFULLY COORDINATE MOUNTING HEIGHTS WITH OWNER). 147 PIVOT
SET WITH M19 INTERMEDIATE PIVOT BY KINSON PER LEAF. HEAVY DUTY DOOR CLOSURE WITH HOLD OPEN
OPTION - CORBIN RUS5WIN C03200 X A1 HOLD OPEN 659 X LEAD LINED COVER, KICKPLATE #37 13"X48"
US20D BY BALDWIN HARDWARE CORP ON EACH SIDE OF DOOR. WALL STOP BY ROCKWOOD.

TYPE "J": FUNCTION N1015 (PASSAGE FUNCTION). CORBIN DC3200 SERIES SURFACE APPLIED DOOR
CLOSER, 4 1/2" BUTT HINGES (MINIMUM 3 PER LEAF) BY STANLEY. WALL STOP BY ROCKWOOD.

TYPE "K": DUMMY TRIM ON EACH LEAF WITH HEAVY DUTY MAGNETIC CATCHES AT THE TOP OF EACH
LEAF, 4 1/2" BUTT HINGES (MINIMUM 3 PER LEAF) AND WALL STOPS.

TYPE "L": FUNCTION N5050D (OFFICE FUNCTION). CORBIN DC3200 SERIES SURFACE APPLIED DOOR
CLOSER, 4 1/2" BUTT HINGES (MINIMUM 3 PER LEAF) BY STANLEY. WEATHER STRIPPING, ALUMINUM
THRESHOLD, WALL STOP BY ROCKWOOD.

TYPE "M": FUNCTION C1055 (OFFICE FUNCTION). DUMMY TRIM FOR INACTIVE LEAF, FLUSH BOLTS BY
STANLEY, FULL METAL ASTRAGAL, COORDINATOR AND CORBIN DC3200 SERIES SURFACE APPLIED
DOOR CLOSER FOR BOTH LEAFS, 4 1/2" BUTT HINGES (MINIMUM 3 PER LEAF) BY STANLEY

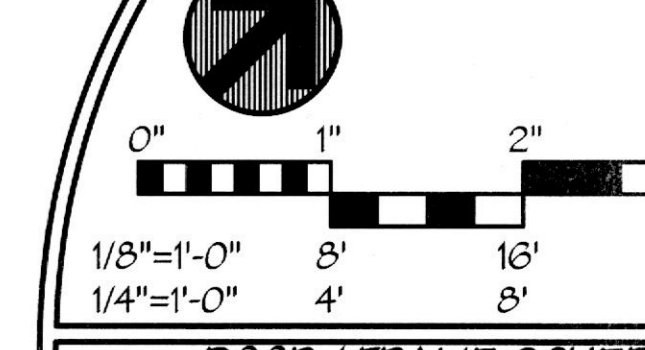
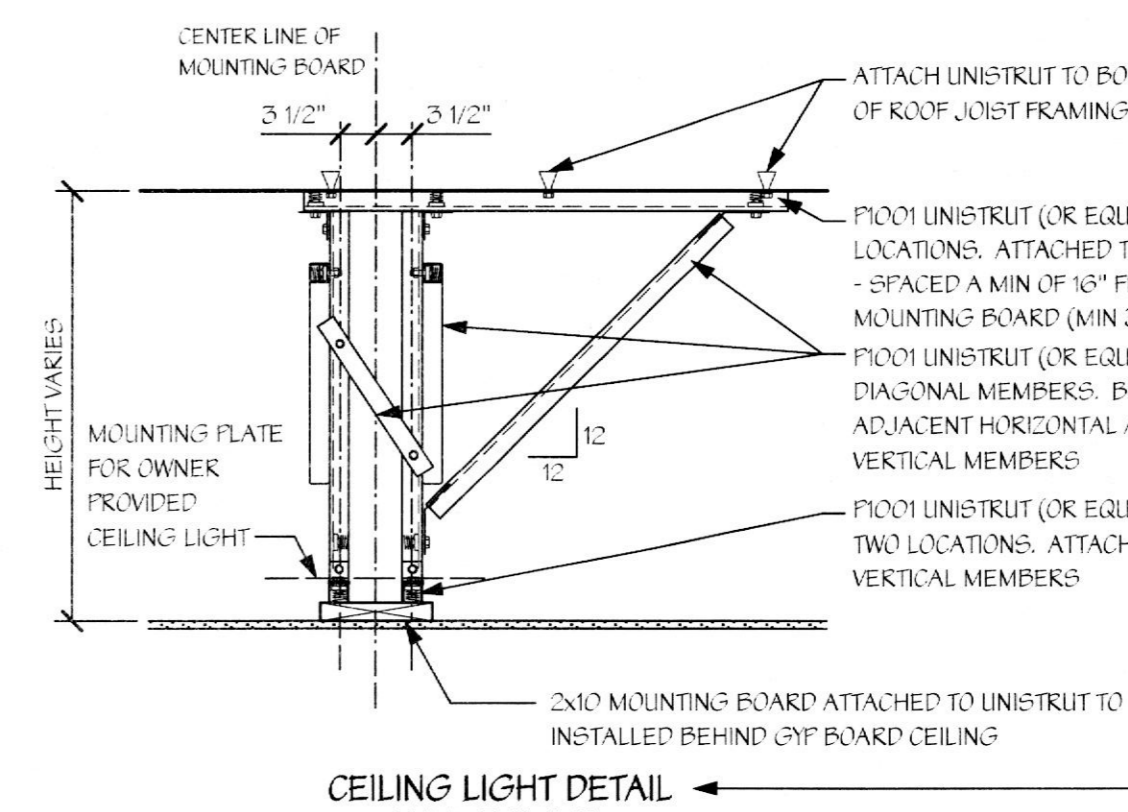
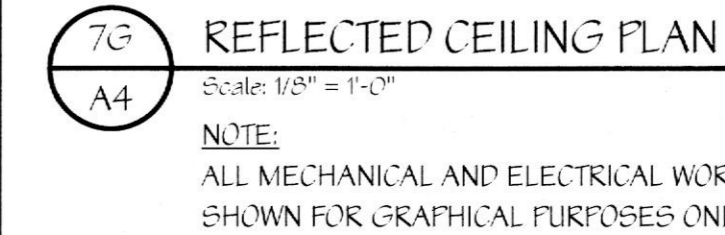
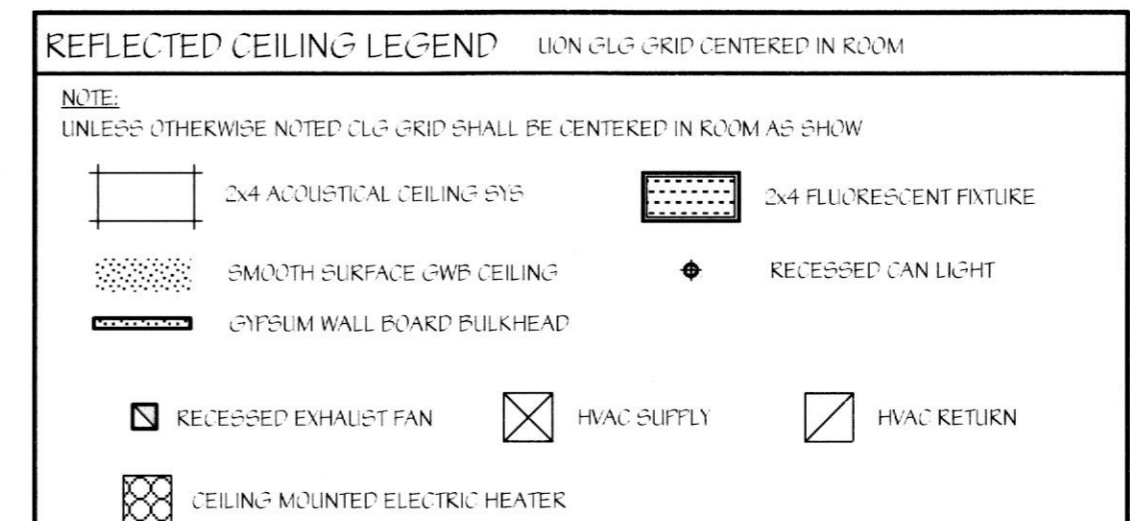
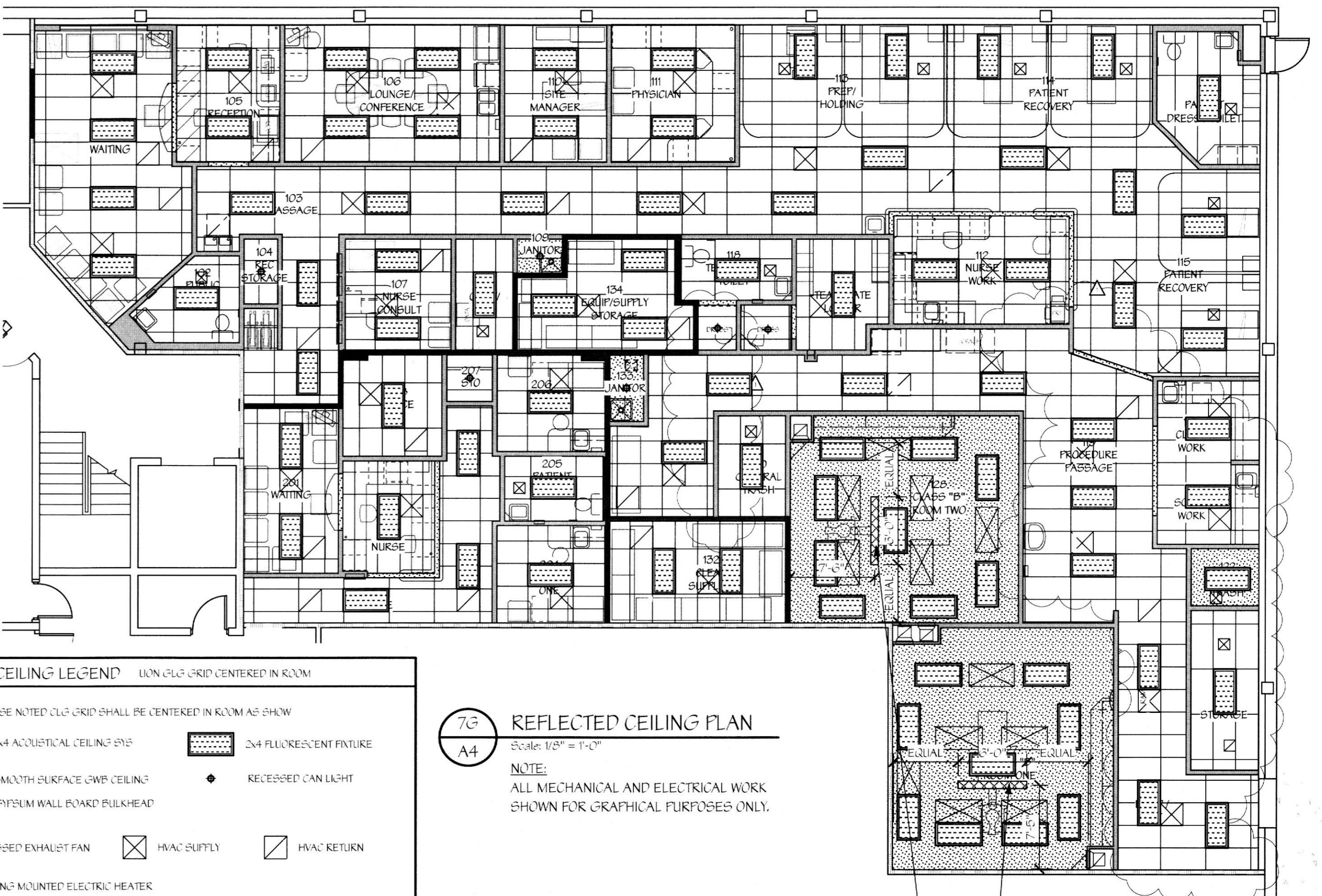
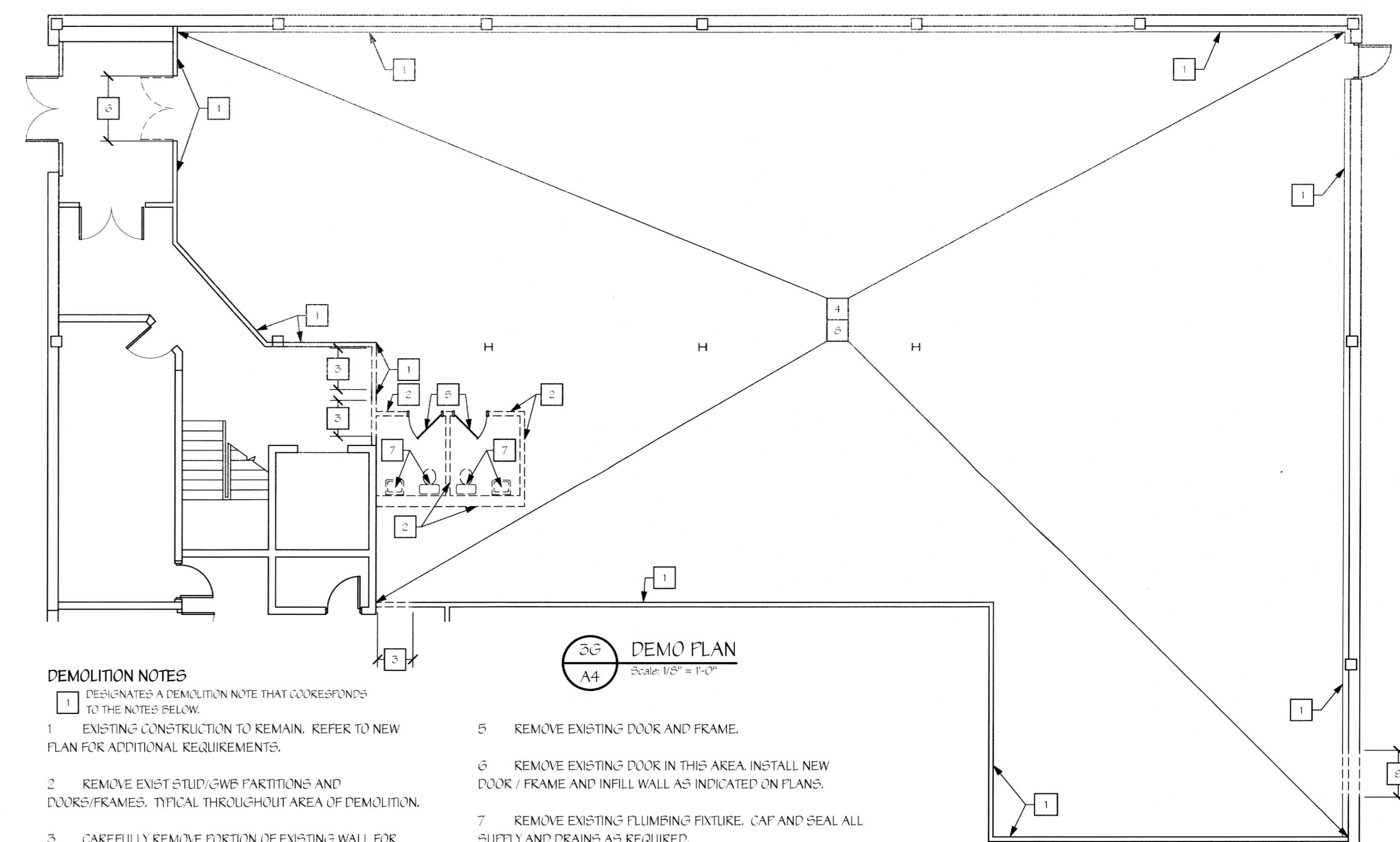


This project was designed in 2013 and was originally signed and sealed and submitted for permit on or about 8/20/13. The stamp below with the current date is to document that this is a record copy of those drawings. These represent no new work done after the construction date based on these drawings and this is ONLY certifying the design work done in 2013



DEMOLITION NOTES

- 1 DEMONSTRATES A DEMOLITION NOTE THAT CORRESPONDS TO THE NOTES BELOW.
- 2 EXISTING CONSTRUCTION TO REMAIN. REFER TO NEW PLAN FOR ADDITIONAL REQUIREMENTS.
- 3 REMOVE EXIST STUD/GWB PARTITIONS AND DOORS/FRAMES. TYPICAL THROUGHOUT AREA OF DEMOLITION.
- 4 CAREFULLY REMOVE PORTION OF EXISTING WALL FOR INSTALLATION OF NEW DOOR. COORDINATE WITH FLOOR PLAN AND LANDLOCK.
- 5 REMOVE EXISTING DOOR AND FRAME.
- 6 REMOVE EXISTING DOOR IN THIS AREA. INSTALL NEW DOOR / FRAME AND INFILL WALL AS INDICATED ON PLANS.
- 7 REMOVE EXISTING PLUMBING FIXTURE, CAP AND SEAL ALL SUFFLY AND DRAINS AS REQUIRED.
- 8 KEWORK EXISTING CEILING AND OTHER FINISHES IN THIS AREA TO ACCOMIDATE NEW WORK PER FLOOR PLAN
- 9 SHORE UP WALL AND CAREFULLY SAW CUT EXISTING BLOCK WALL TO CREATE NEW DOOR OPENINGS. COORDINATE EXACT LOCATION WITH FLOOR PLAN. REFER TO DETAIL 53/5/6 FOR NEW LINTEL REQUIREMENTS. PATCH EXTERIOR WALLS AROUND NEW OPENINGS TO MATCH EXISTING ADJACENT WALLS AND PAINT TO MATCH EXISTING.



DOOR / FRAME SCHEDULE & REFLECTED CLG PLAN DEMOLITION PLAN

REV #	DATE	DESCRIPTION
1	7/15/13	OWNER BUDGET REVISIONS

ISSUED FOR BUILDING PERMIT

Richard J. Stern, P.E.
Mechanical / Electrical
2741 Furness Road
Feltton, PA 17322
Phone: 717-891-6026

TENANT RENOVATIONS FOR:
Access Center
1733 Eastchester Road
Bronx, NY 10461

Lifeline
Vascular Access

In Syn c
ARCHITECTURAL DESIGNS, INC.
1215 Old Riverdale Road
Whiteford, MD 21160
Office 410-452-5046
Fax 410-452-5046

DRAWING NO. A-104.00
SHEET 06 OF 06
DATE 4/18/13
JOB NUMBER 11206
DRAWN BY BFC
CHECKED BY

NOTE: CONTRACTOR AND SUB-CONTRACTORS SHALL VISIT THIS BUILDING AND TENANT AREA AND BE FAMILIAR WITH ALL THE EXISTING CONDITIONS PRIOR TO CONTRACT AWARD