

OXYGEN & VACUUM SYSTEM NOTES

◇ DESIGNATES AN OXYGEN / VACUUM SYSTEM NOTE

CHEMICAL NOTE - INSTALL 1/2" GAUGE CONTROL WIRING PER MANUFACTURE'S REQUIREMENTS/RECOMMENDATIONS BETWEEN PRESSURE/VACUUM SWITCHES, MANIFOLD, CONTROL PANEL AND MASTER ALARM PANEL AND AREA ALARM PANEL LOCATIONS.

1. OXYGEN MANIFOLD UNIT SHALL BE OHIO MEDICAL CORPORATION MODEL #2693432-11 WITH A 2X2 HEADER BAR, 1/2" RELIEF VALVE (SET AT 75PSIG) #2323000 AND PIPE AWAY FOR RELIEF VALVE #2323002. FULLY AUTOMATIC MANIFOLD SHALL HAVE A NEMA 4X ENCLOSURE AND BE UL LISTED. PRESSURE CONTROL CABINET SHALL CONTAIN DUAL PRESSURE REGULATORS AND SWITCHES THAT INSURE AN UNINTERRUPTED FLOW OF GAS TO THE PIPELINE. THE CABINET SHALL HAVE THREE PRESSURE GAUGES, ONE FOR EACH SUITLY SIDE AND ONE FOR PIPELINE DELIVERY. IT SHALL BE AUTOMATIC SWITCH. HEADER BARS SHALL BE MODULAR IN DESIGN, ALLOWING FOR FUTURE EXPANSION. EACH INLET PORT SHALL BE EQUIPPED WITH AN INDIVIDUAL CHECK VALVE. HEADER BAR SHALL INCLUDE A MASTER SHUTOFF VALVE.

2. HEADER BAR ON EACH SIDE OF MANIFOLD PER NOTE 1 ABOVE. PROVIDE FITTAILS FOR CONNECTION TO CYLINDERS (BY OWNER). COORDINATE EXACT INSTALLATION LOCATION OF HEADERS WITH OWNER. MANIFOLD AND HEADERS SHALL BE INSTALLED PER NFPA REQUIREMENTS AND IN COMPLIANCE WITH MANUFACTURE'S RECOMMENDATIONS.

3. LOCKABLE VALVE FOR SYSTEM SHUTDOWN ADJACENT TO MANIFOLD ASSEMBLY. VALVE SHALL BE 231600-05 BY OHIO MEDICAL CORPORATION WITH LABEL KIT 2316145. INSTALL PER MANUFACTURE'S RECOMMENDATIONS TO COMPLY WITH NFPA REQUIREMENTS.

4. PROVIDE GAS SPECIFIC DEMAND CHECK ASSEMBLY CONSISTING OF OHIO MEDICAL CORPORATION MAINLINE PRESSURE SWITCH #261709 AND P300-GAUGE-100 PSI OXYGEN AND P-500-GAUGE-VAC FOR VACUUM UTILIZING PART #2618033 AND INSTALLED PER MANUFACTURE'S RECOMMENDED INSTALLATION DIAGRAM. PROVIDE 1/2" OXYGEN SUPPLY PIPE UP WALL TO CEILING FOR DISTRIBUTION PER DRAWING.

5. PRESSURE RELEASE VENT PIPING FOR PRESSURE RELIEF VALVE(S) TO THE OUTSIDE PER MANUFACTURE'S RECOMMENDATIONS. CONTRACTOR SHALL SELECT AN APPROPRIATE DISCHARGE POINT AND SHALL COORDINATE EXACT LOCATION WITH THE LANDLORD. TERMINATE PIPING PER MANUFACTURE'S RECOMMENDATIONS.

6. IT IS THE INTENT OF THIS PROJECT TO INSTALL ALL PIPING, VALVES AND INTERCONNECTING WIRING FOR THE INSTALLATION OF FUTURE MEDICAL VACUUM EQUIPMENT THAT WILL BE SIMILAR TO OHIO MEDICAL HEALTHCARE SYSTEM MODEL NO S300B-12V PACKAGED SYSTEM PART NO S300-460-12-V&O - 3 HP ELECTRIC MOTOR DRIVEN PUMPS, A 20 GALLON RECEIVER AND A UL LISTED DUPLEX ELECTRICAL CONTROL SYSTEM MOUNTED IN A NEMA 12 ENCLOSURE. ALL SYSTEM COMPONENTS SHALL BE INSTALLED WITH THE EXCEPTION OF THE ACTUAL MEDICAL VACUUM SUCH THAT, AT A FUTURE TIME WHEN THE OWNER ELECTS TO COMPLETE THIS INSTALLATION, THE ONLY WORK REQUIRED AT THAT TIME WILL BE THE PURCHASE INSTALLATION OF THE VACUUM ITSELF WITH THE ONLY WORK REQUIRED BEING IN THE MEDICAL VACUUM ROOM. THIS PROJECT SCOPE REQUIRES ALL OTHER WORK.

- A. FOR MOTOR PROTECTION, THE EQUIPMENT SHOULD AMBIENT TEMPERATURE ABOVE 104°F.
- B. EQUIPMENT CONFORMS TO THE NATIONAL ELECTRICAL CODE.
- C. THE SYSTEM SHALL MEET NFPA 99 2009 REQUIREMENTS AND IFC 2009.
- D. SYSTEM MUST BE CERTIFIED BY AN APPROVED MEDICAL GAS CERTIFICATION COMPANY AFTER INSTALLATION.

7. OXYGEN DISTRIBUTION PIPING IN CEILING, (1/2" MIN) PIPING SHALL BE INSTALLED PER NFPA AND MANUFACTURE'S REQUIREMENTS AND PER THE MATERIAL SPECIFICATIONS. (SEE SPEC BOOK)

8. VACUUM DISTRIBUTION PIPING IN CEILING-SIZED PER MANUFACTURE'S RECOMMENDATIONS FOR THE VARIOUS LOCATIONS/DEMANDS - MINIMUM 3/4". PIPING SHALL BE INSTALLED PER NFPA AND MANUFACTURE'S REQUIREMENTS.

9. OXYGEN AND VACUUM PIPING (SEE NOTES #7 & #8) DOWN IN WALL TO ZONE VALVE BOX. VALVE BOX SHALL BE OHIO MEDICAL CORPORATION BRAND MODEL #261802-XXXX WITH GAUGE PORT. IT SHALL BE CONSTRUCTED OF STEEL AND THE FRAME ALUMINUM WITH A TINTED, FLEW-GLASS PULL OUT WINDOW. THE VALVE SHALL BE OXYGEN CLEANED, FULL PORT, THREE-PIECE BALL TYPE. COORDINATE MOUNTING HEIGHT WITH OWNER AND LOCAL JURISDICTION REQUIREMENTS AND INSTALL PER MANUFACTURE'S RECOMMENDATIONS. OXYGEN AND VACUUM PIPING (SEE NOTES #7 & #8) UP IN WALL DISTRIBUTION PIPING IN CEILING.

10. OXYGEN AND VACUUM PIPING (SEE NOTES #7 & #8) DOWN IN WALL TO MEDICAL GAS AND VACUUM OUTLET (VACUUM OUTLET TO INCLUDE SLIDE BRACKET NEXT TO VACUUM OUTLET). MEDICAL GAS OUTLETS SHALL BE OHIO MEDICAL CORPORATION BRAND, DIAMOND QUICK-CONNECT - FOR OXYGEN PART #261000-1415 - FOR VACUUM PART NUMBER #261010-5 WITH VACUUM VACUUM WALL REGULATOR WITH OHMEDA WALL INLET AND NIPPLE CONNECTOR. FOR VACUUM SLIDE PART NUMBER 261800. VERIFY LOCATION OF SLIDE PLATE WITH OWNER PRIOR TO INSTALLATION. OUTLETS SHOULD INCLUDE ONE PIECE, HIGH IMPACT, FLAME-RESISTANT (NOR) TRIM PLATE. ALL OUTLETS SHALL BEAR THE UL LABEL AND BE CLEANED FOR OXYGEN SERVICE. OUTLETS SHOULD INCLUDE PRIMARY AND SECONDARY CHECK VALVES. WALL OUTLETS SHALL HAVE GAS SPECIFIC BACK BODY WITH A STEEL MOUNTING PLATE. COORDINATE EXACT MOUNTING HEIGHT/LOCATION WITH OWNER PRIOR TO INSTALLATION.

11. COMBINATION MASTER/AREA ALARM FOR OXYGEN AND VACUUM SYSTEMS. UNIT SHALL BE A OHIO MEDICAL CORPORATION COMBINATION 10 POINT MASTER ALARM / 4 LEAS AREA 10 POINT MASTER ALARM WITH *LONWORKS #261805-101212. ALLOWING IT TO INTERFACE WITH A FUTURE BUILDING AUTOMATION SYSTEM. IT SHALL COMPLY WITH FCC PART 15. IT SHALL HAVE HIGH VISIBILITY LED READOUTS. IT SHALL BE EQUIPPED WITH REMOTE SENSORS (REFER TO NOTE 9 BELOW). COORDINATE EXACT LOCATION OF INSTALLATION WITH CASEWORK AND OWNER PRIOR TO INSTALLATION.

12. REMOTE SENSORS, ONE FOR OXYGEN AND ONE FOR VACUUM. PROVIDE ALL ACCESSORIES REQUIRED FOR A COMPLETE INSTALLATION PER MANUFACTURE'S RECOMMENDATIONS. PROVIDE AS FOLLOWS:

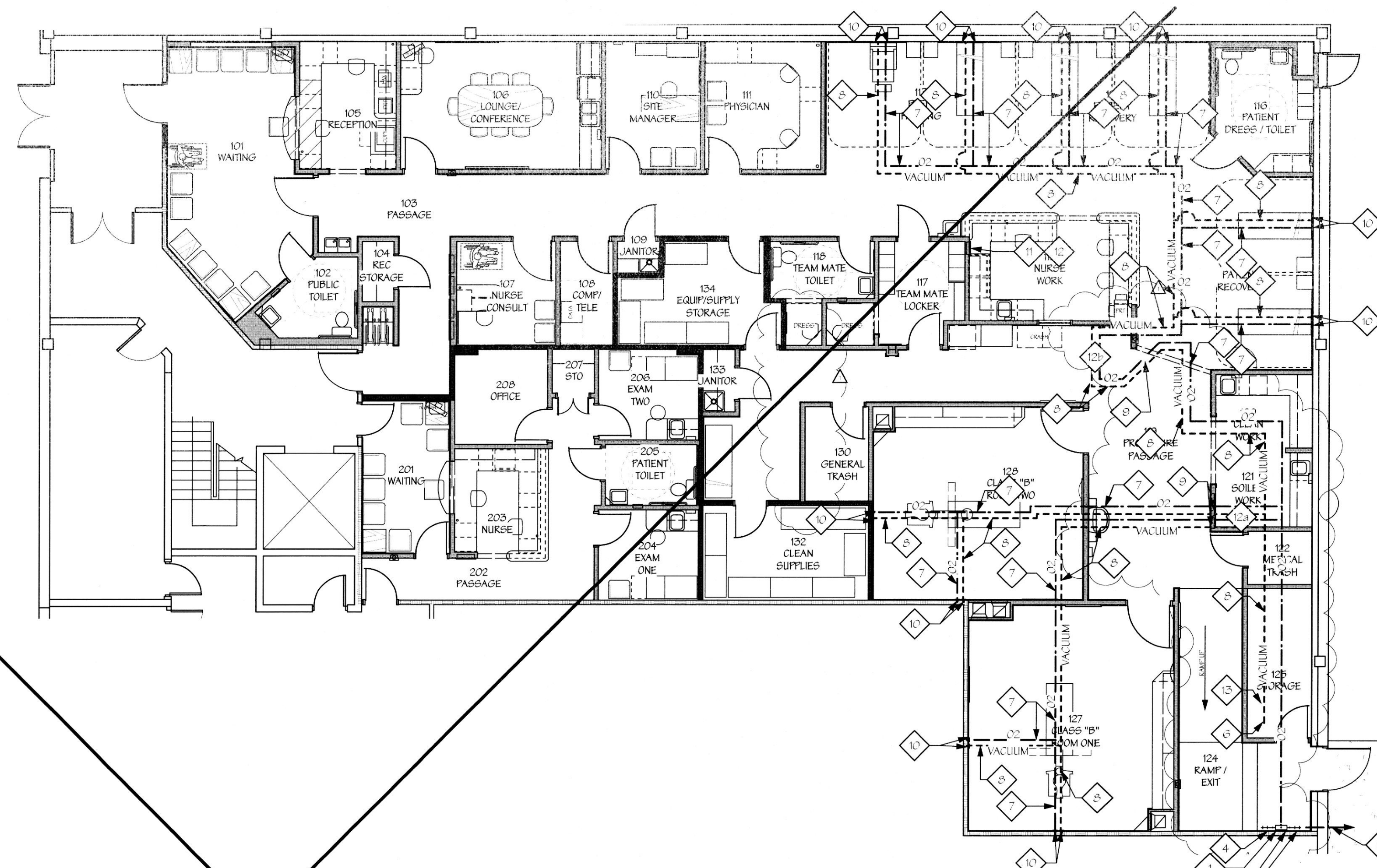
12a. TO BE INSTALLED ON THE UPSTREAM SIDE OF THE MAIN LINES PRIOR TO ZONE VALVES SERVING THE OR ROOMS.

12b. TO BE INSTALLED ON THE DOWN STREAM SIDE OF THE DISTRIBUTION PIPING AFTER THE ZONE VALVE BOX SERVING THE RECOVERY AREA.

13. VACUUM EXHAUST EXHAUST PIPING TO THE OUTSIDE PER MANUFACTURE'S RECOMMENDATIONS. CONTRACTOR SHALL SELECT AN APPROPRIATE DISCHARGE POINT AND SHALL COORDINATE EXACT LOCATION WITH THE LANDLORD. SELECTED LOCATION SHALL BE A MIN OF 10 FEET FROM ANY INTAKE DEVICE OR ANY WINDOWS OR DOORS. TERMINATE PIPING PER MANUFACTURE'S RECOMMENDATIONS.

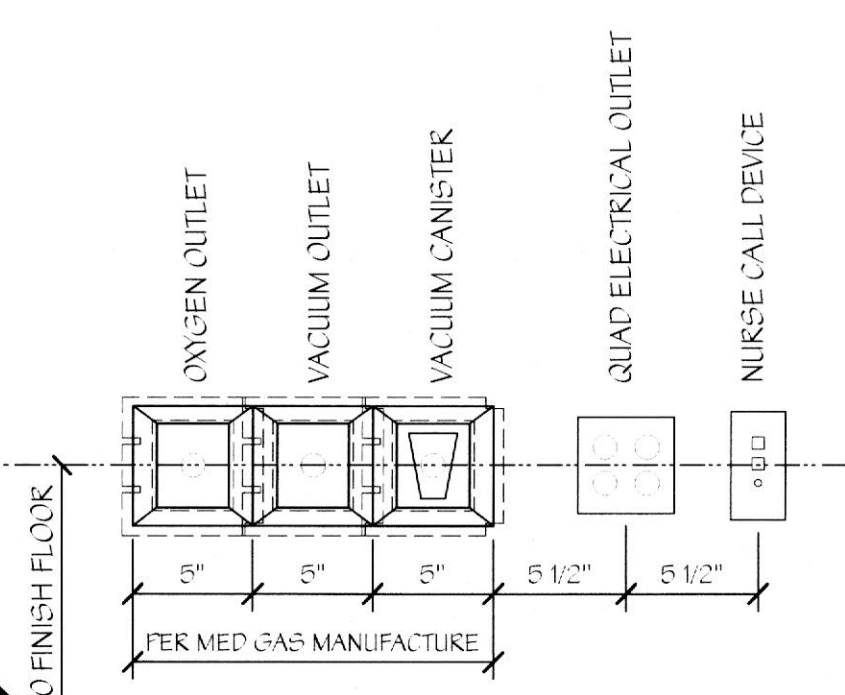
NOTE: EACH WALL OUTLET SHALL BE PROVIDED WITH A 1-1/2 L/MIN FLOWMETER EQUAL TO MODEL 1200 BY OHIO MEDICAL

NOTE: LIFELINE HAS A NATIONAL SALES RELATIONSHIP WITH THE FOLLOWING CONTACTS: CLARK NIEMMEYER - OHIO MEDICAL CORPORATION - 800-448-0770

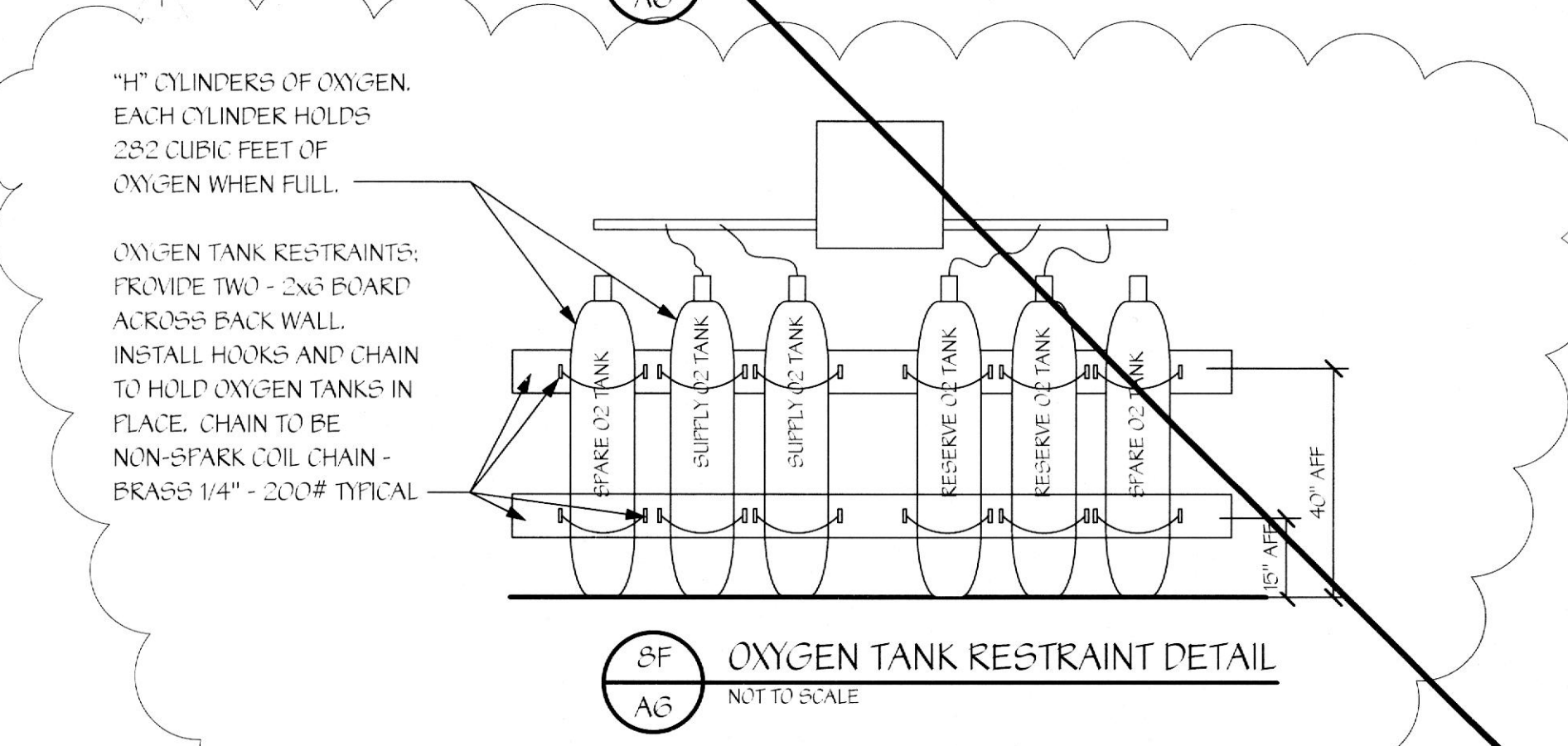


DELETE MED GAS FROM THE PROJECT SCOPE

4F PIPED OXYGEN / VACUUM PLAN

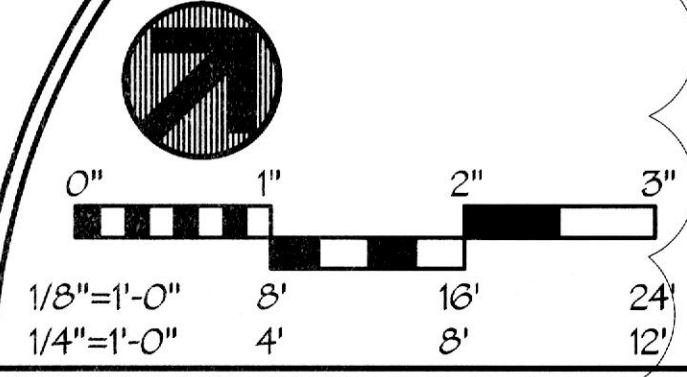


6F MED GAS OUTLET DETAIL



6F OXYGEN TANK RESTRAINT DETAIL

This project was designed in 2013 and was originally signed and sealed and submitted for permit on or about 8/20/13. The stamp below with the current date is to document that this is a record copy of those drawings. These represent no new work done after the construction done based on these drawings and this is ONLY certifying the design work done in 2013



MED GAS PLAN

REV#	DATE	DESCRIPTION
#1	7/13/13	OWNER BUDGET REVISIONS

DRAWING NO.	A-106.00
SHEET	OF
DATE	DRAWN BY
4/15/13	SPC
JOB NUMBER	CHECKED BY
11206	KDT

ISSUED FOR BUILDING PERMIT

Richard J. Stern, P.E.
Mechanical, Electrical
2741 Furnace Road
Feltom, PA 17322
Phone: 717-891-6026

TENANT RENOVATIONS FOR:
Access Center
1733 East Chester Road
Broix, NY 10461

Lifeline
Vascular Access

In Sync
ARCHITECTURAL DESIGNS, INC.
1215 Old Pylesville Road
Whiteford, MD 21160
Office 410-462-8006 Fax 410-462-8046