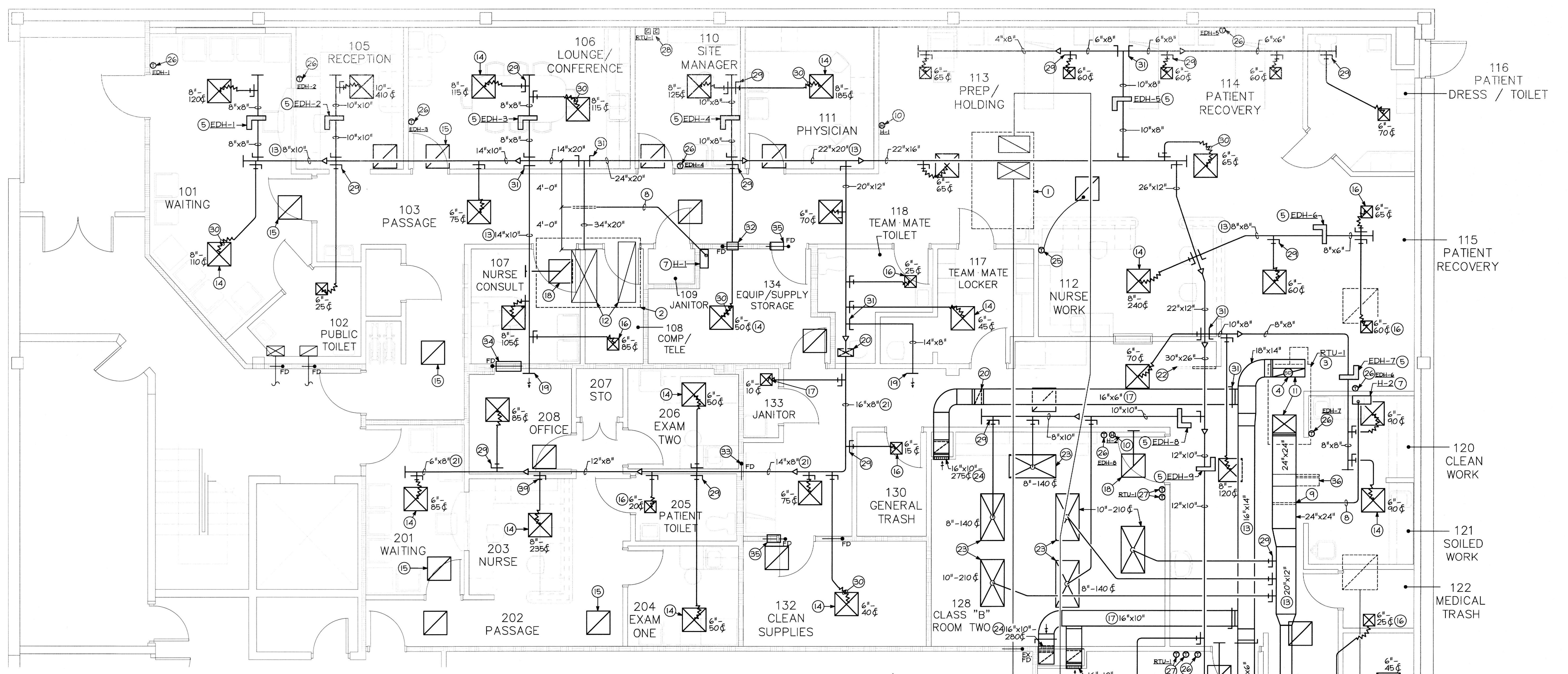


ISSUED FOR  
BUILDING PERMIT



**FLOOR PLAN-EXISTING CONDITIONS/  
NEW WORK (HVAC)**  
SCALE: 1/4"=1'-0"

**DRAWING NOTES**

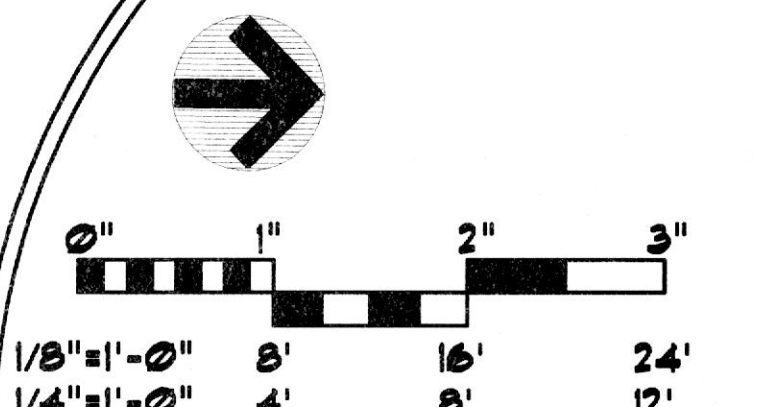
- 1 OUTLINE OF EXISTING ROOFTOP UNIT MOUNTED ROOF CURB TO REMAIN.
- 2 OUTLINE OF EXISTING 15 TON ROOFTOP UNIT MOUNTED ROOF CURB TO REMAIN. REBALANCE EXISTING ROOFTOP UNIT TO DELIVER 5,500 CFM SUPPLY AIR AND 1,000 CFM FRESH AIR INTAKE. CONTRACTOR TO FIELD VERIFY EXISTING ROOFTOP UNIT AND INSTALL/PROVIDE A FACTORY OPTION CO<sub>2</sub> SENSOR.
- 3 OUTLINE OF NEW ROOFTOP UNIT ON ROOF CURB MOUNTED ON ROOF. REFER TO SHEET M-105.00 FOR SIZE AND CAPACITY.
- 4 DUCT MOUNTED SMOKE DETECTOR. SMOKE DETECTOR SHOWN FOR INFORMATION ONLY. COORDINATE LOCATION OR SPECIAL REQUIREMENTS WITH FIRE ALARM VENDOR AND ELECTRICAL CONTRACTOR. MECHANICAL CONTRACTOR PROVIDE A 12"x12" ACCESS DOOR IN DUCTWORK FOR INSPECTIONS. COORDINATE WITH ELECTRICAL CONTRACTOR.
- 5 DUCT MOUNTED ELECTRIC HEATER SUPPORTED ABOVE CEILING. REFER TO SHEET M-105.00 FOR SIZE AND CAPACITY.
- 6 ELECTRIC WALL MOUNTED HEATER. REFER TO SHEET M-105.00 FOR SIZE AND CAPACITY.
- 7 WALL MOUNTED HUMIDIFIER. MOUNT AS HIGH AS POSSIBLE ON WALL JUST BELOW THE CEILING. REFER TO SHEET M-105.00 FOR SIZE AND CAPACITY AND DETAIL ON SHEET M-104.00 FOR MORE INFORMATION (TYPICAL).
- 8 SUPPORT 1 1/2" COPPER STEAM/CONDENSATE RETURN LINE ABOVE CEILING.
- 9 DUCT MOUNTED STEAM DISTRIBUTOR. REFER TO DETAIL ON SHEET P-103.00 FOR MORE INFORMATION.
- 10 HUMIDISTAT THERMOSTAT TO BE MOUNTED ±48" ABOVE FINISHED FLOOR TO CONTROL HUMIDIFIER. PROVIDE A CLEAR VENTED LOCKABLE COVER FOR HUMIDISTAT. CLEARLY/NEATLY IDENTIFY ABOVE THE HUMIDISTAT WITH 1/4" HIGH LETTERS.
- 11 SUPPLY/RETURN AIR DUCTWORK UP TO NEW ROOFTOP UNIT. TRANSITION DUCTWORK AS REQUIRED TO EXISTING ROOFTOP UNIT'S CONNECTION. PROVIDE FLEXIBLE CONNECTION IN DUCTWORK AT NEW UNIT CONNECTIONS.
- 12 SUPPLY AIR DUCTWORK UP TO EXISTING ROOFTOP UNIT. TRANSITION DUCTWORK AS REQUIRED TO EXISTING ROOFTOP UNIT'S CONNECTION. PROVIDE FLEXIBLE CONNECTION IN DUCTWORK AT NEW UNIT CONNECTIONS. CONTRACTOR TO FIELD VERIFY EXISTING RETURN DUCT AND PROVIDE A 1/2"x1/2" WIRE SCREEN OVER DUCT OPENING IF SO NEEDED.
- 13 SUPPLY AIR DUCTWORK SUSPENDED FROM STRUCTURE ABOVE CEILING (TYPICAL).
- 14 24"x24" LOUVERED FACE SUPPLY AIR DEVICE MOUNTED WITHIN ACOUSTICAL CEILING TILE WITH NECK SIZE AND AIR VOLUME INDICATED (TYPICAL).
- 15 24"x24" RETURN AIR GRILLE MOUNTED WITHIN ACOUSTICAL CEILING (TYPICAL).
- 16 12"x12" LOUVERED FACE SUPPLY AIR DEVICE MOUNTED WITHIN ACOUSTICAL CEILING TILE WITH NECK SIZE AND AIR VOLUME INDICATED (TYPICAL).
- 17 RETURN AIR DUCTWORK SUSPENDED FROM STRUCTURE ABOVE CEILING (TYPICAL).
- 18 24"x24" RETURN AIR GRILLE MOUNTED WITHIN ACOUSTICAL CEILING TILE WITH AIR TRANSFER ASSEMBLY. REFER TO SHEET M-104.00 FOR MORE INFORMATION.

- 19 EXTEND SUPPLY AIR DUCTWORK TO WITHIN THE MEZZANINE AREA. BALANCE AIRFLOW TO DELIVER 505 CFM. PROVIDE A 1/2"x1/2" WIRE MESH SCREEN OVER DUCT OPENING.
- 20 ROUTE DUCTWORK DOWN TO BE SUPPORTED BELOW THE MEZZANINE.
- 21 DUCTWORK SUSPENDED TIGHT TO BOTTOM OF MEZZANINE STRUCTURE/ABOVE CEILING.
- 22 24"x25"x3/8" MERV 8 FILTER IN A 24"x25" AIRTIGHT/INSULATED FILTER FRAME PULL RACK SUPPORTED FROM ABOVE THE CEILING. PROVIDE HIGH CAPACITY FILTER AS MANUFACTURED BY CAMFIL FARR AIR FILTER, 30/30 MERV 8 PLEATED PANEL FILTER. FILTER SHALL HAVE NO MORE THAN 1.0" PRESSURE DROP. NO SUBSTITUTE FOR SPECIFIED FILTER. CLEARLY/NEATLY IDENTIFY ON THE CEILING GRID WITH 1/4" HIGH LETTERS JUST BELOW MERV 8 FILTER. THE MECHANICAL CONTRACTOR IS TO COORDINATE WITH OTHER TRADES THE EXACT MOUNTING LOCATION OF THE FILTER RACK AND IT'S FILTER ACCESS ABOVE THE CEILING IN THE FIELD PRIOR TO INSTALL.
- 23 24"x48" SUPPLY AIR LAMINAR FLOW DIFFUSER MOUNTED WITHIN DRYWALL CEILING WITH NECK SIZE (10"Ø) AND AIR VOLUME INDICATED (TYPICAL).
- 24 STAINLESS STEEL RETURN AIR GRILLE MOUNTED ±6" ABOVE FINISHED FLOOR IN WALL WITH NECK SIZE AND AIR VOLUME INDICATED.
- 25 NEW THERMOSTAT TO BE MOUNTED ±48" ABOVE FINISHED FLOOR ON WALL TO CONTROL EXISTING ROOFTOP UNIT. PROVIDE/INSTALL A REMOTE AIR SENSOR FOR THE THERMOSTAT IN THE RETURN AIR GRILLE AS INDICATED. PROVIDE A CLEAR VENTED LOCKABLE COVER FOR THERMOSTAT.
- 26 HEATING ONLY THERMOSTAT TO BE MOUNTED ±48" ABOVE FINISHED FLOOR ON WALL TO CONTROL DUCT MOUNTED ELECTRIC HEATER. PROVIDE A CLEAR VENTED LOCKABLE COVER FOR THERMOSTAT.
- 27 DIGITAL TEMPERATURE/HUMIDITY SENSOR WIRING IN SERIES PARALLEL CONFIGURATION AVERAGING SENSOR TO BE MOUNTED ON THE WALL ±48" ABOVE FINISHED FLOOR. INTERLOCK WITH THE AAO'S VCMX CONTROLLER LOCATED IN THE ROOFTOP UNIT. HUMIDITY SENSOR TO SERVE AAO'S DEHUMIDIFICATION SYSTEM AND THE TEMPERATURE SENSOR WILL ONLY ALLOW HEATING/COOLING TEMPERATURE READINGS BACK TO AAO'S SYSTEM MANAGER AND SLIGHT AIR TEMPERATURE ADJUSTMENTS WITHIN THE PROCEDURE ROOM.
- 28 THE AAO SYSTEM MANAGER DIGITAL DISPLAY/CONTROLLER TO BE MOUNTED ±48" ABOVE FINISHED FLOOR ON WALL FOR REMOTE INTERFACE WITH THE VCMX CONTROLLER IN THE ROOFTOP UNIT. THERE WILL BE 2 THERMOSTATS MOUNTED IN EACH PROCEDURE ROOM THAT WILL SENSE AND GET AN AVERAGE OF THE ROOM'S TEMPERATURES. THIS INFORMATION WILL BE TRANSMIT BACK TO THE AAO SYSTEM MANAGER/CONTROLLER FOR THE AIR TEMPERATURE CONTROL TO BE PROCESSED.
- 29 AIR-TITE FITTING WITH DAMPER AND ADHESIVE GASKET (TYPICAL).
- 30 INSULATED/PLENUM RATED FLEXIBLE DUCTWORK (TYPICAL).
- 31 VOLUME DAMPER (TYPICAL).
- 32 TRANSITION ROUND RIGID DUCTWORK TO A 8"x8" DUCT MOUNTED IN WALL ABOVE CEILING TO ACCOMPANY FIRE DAMPER AS INDICATED. CLEARLY/NEATLY IDENTIFY ON THE CEILING GRID WITH 1/4" HIGH LETTERS JUST BELOW FIRE DAMPER.
- 33 FIRE DAMPER MOUNTED IN DUCTWORK WITHIN WALL ABOVE THE CEILING (TYPICAL). CLEARLY/NEATLY IDENTIFY ON THE CEILING GRID WITH 1/4" HIGH LETTERS JUST BELOW FIRE DAMPER.

**DE-DUCT ALTERNATE**

1) THE CONTRACTOR SHALL PROVIDE A DE-DUCT ALTERNATE PRICE FOR REUSING THE EXISTING DUCTWORK THAT HAS BEEN INSTALLED WITH THE EXISTING 15 TON ROOFTOP UNIT. CONTRACTOR SHALL BE RESPONSIBLE TO VERIFY THE EXISTING DUCTWORK AND TO REPAIR AS REQUIRED TO PROVIDE THE DESIGN AIRFLOW INDICATED ON THE CONTRACT DOCUMENTS. ANY EXISTING DUCTWORK THAT IS REUSED SHALL BE CLEANED AND SEALED TO BE "LIKE NEW".

This project was designed in 2013 and was originally signed and sealed and submitted for permit on or about 8/20/13. The stamp below with the current date is to document that this is a record copy of those drawings. These represent no new work done after the construction done based on these drawings and this is ONLY certifying the design work done in 2013



**FLOOR PLAN-NEW WORK (HVAC)**

REVISIONS		
REV#	DATE	DESCRIPTION
1	7/16/13	OWNER'S REVISION

DRAWING NO.  
**M-102.00**  
SHEET 2 OF 9  
DATE DRAWN BY  
4/18/15 DL1  
JOB NUMBER CHECKED BY  
11206 DL1  
SDP# 2013-01H

To the best of my knowledge, belief and professional judgment, these plans and specifications are in compliance with Section 101.4.4 of the New York City Energy Conservation Code (NYCECC).

Richard J. Stern, P.E.

2741 Furnace Road  
Fellon, PA 17322  
Phone: 717-891-6076

TENANT RENOVATIONS FOR:  
**Access Center**  
1733 Eastchester Road  
Bronx, NY 10461

**Lifeline**  
Vertical Air Access

**InSync**  
ARCHITECTURAL DESIGNS, INC.  
1219 Old Plymouth Road  
Whiteford, MD 21160  
Office 410-452-8006 Fax 410-452-8006

