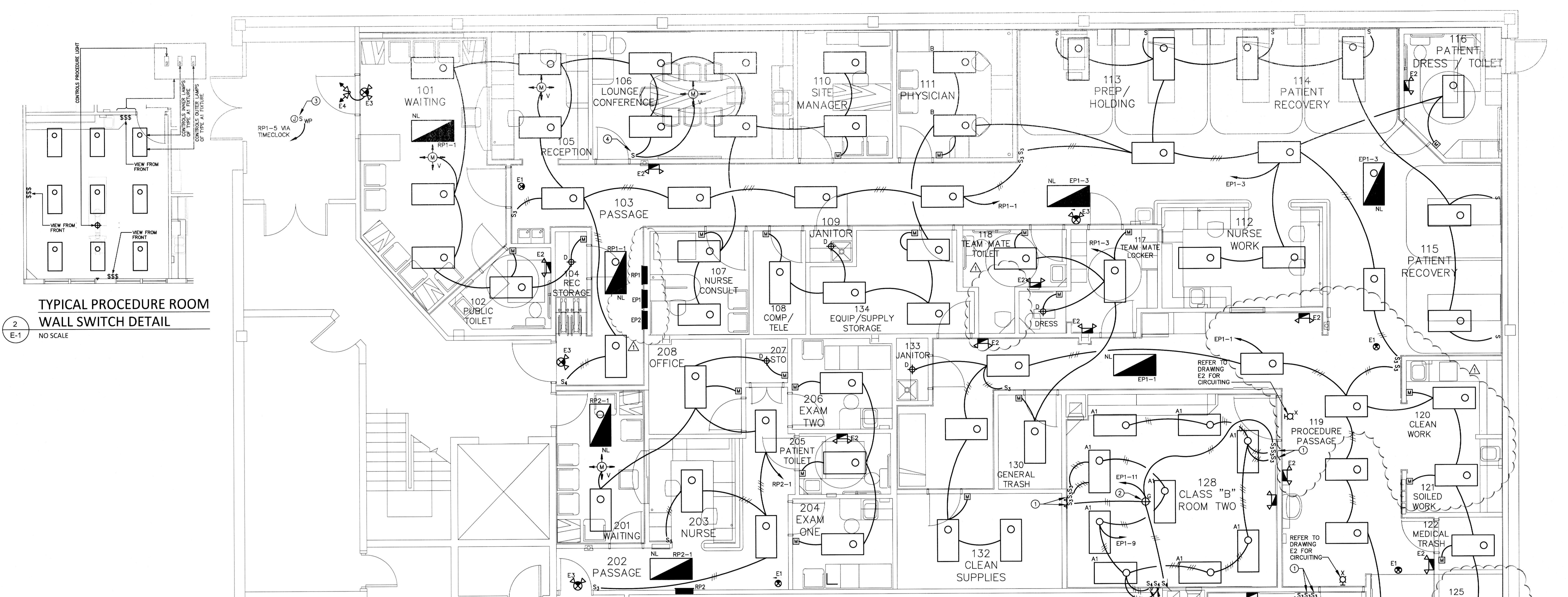


2 E-1  
TYPICAL PROCEDURE ROOM  
WALL SWITCH DETAIL  
NO SCALE



1 E-1  
FLOOR PLAN - LIGHTING  
SCALE: 1/4"=1'-0"

DEMOLITION NOTES:

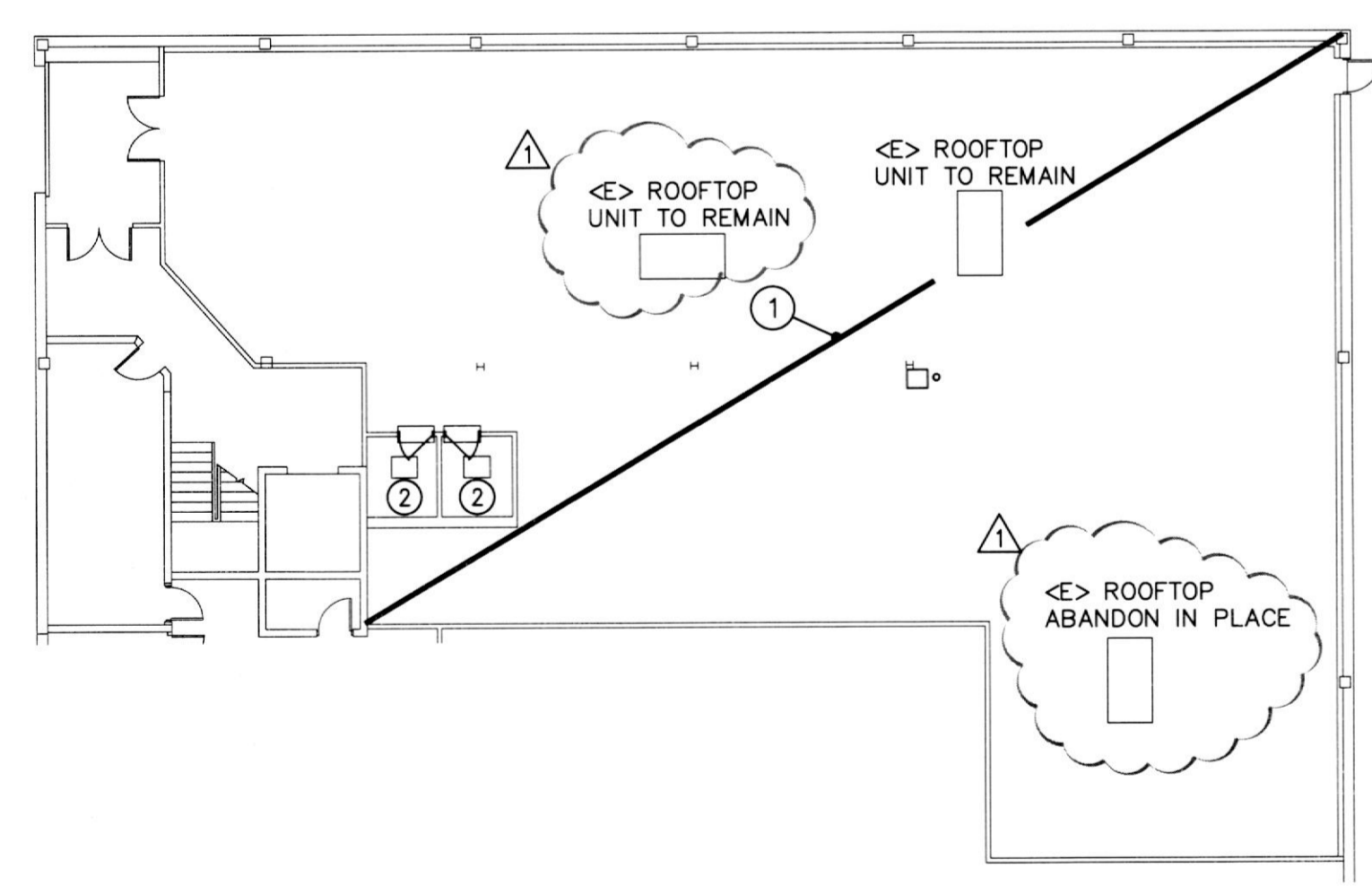
- 1 DISCONNECT AND REMOVE ALL PANELBOARDS, LIGHTS, RECEPTACLES, EMERGENCY BATTERY UNITS, EXIT SIGNS, FIRE ALARM DEVICES, ETC. FROM EXISTING SPACE BEING DEMOED UNLESS OTHERWISE NOTED TO REMAIN ON PLANS. REMOVE ALL ASSOCIATED WIRING AND CONDUIT BACK TO SOURCE.
- 2 DISCONNECT EXHAUST FAN, DISCONNECT AND REMOVE ASSOCIATED DEVICES, WIRING AND CONDUIT BACK TO SOURCE.
- 3 DELETED.

GENERAL LIGHTING NOTES:

- 1 ALL LIGHTING FIXTURES ARE TYPE 'A' UNLESS OTHERWISE NOTED.
- 2 MULTIPLE SWITCHES AT ONE (1) LOCATION SHALL BE GANGED TOGETHER AND HAVE ONE (1) SWITCH PLATE.
- 3 MOUNT ALL SWITCHES 42" A.F.F. COORDINATE WITH ARCHITECT PRIOR TO ROUGH-IN.
- 4 REFER TO TYPICAL PROCEDURE ROOM WALL SWITCH DETAIL ON THIS DRAWING FOR LIGHT SWITCH CONTROL.
- 5 CONNECT EXIT LIGHTS, EMERGENCY BATTERY UNITS AND NIGHT LIGHTS (NL) TO THE UNSWITCHED PORTION OF LOCAL BRANCH LIGHTING CIRCUIT SERVING RESPECTIVE AREA.

DRAWING NOTES:

- 1 ONE SWITCH SHALL CONTROL THE INNER LAMPS AND ONE SWITCH SHALL CONTROL THE OUTER LAMPS FOR 50% LIGHT LEVEL OF THE 2X4 FIXTURES.
- 2 OWNER SHALL BE RESPONSIBLE FOR FURNISHING AND INSTALLING LIGHT FIXTURE INDICATED. ELECTRICAL CONTRACTOR SHALL BE RESPONSIBLE FOR MAKING ALL FINAL ELECTRICAL CONNECTIONS.
- 3 IF REQUIRED, ELECTRICAL CONTRACTOR SHALL PROVIDE AND INSTALL JUNCTION BOX AND WEATHERPROOF SWITCH FOR TENANT EXTERIOR BUILDING MOUNTED SIGN. COORDINATE LOCATION IN FIELD.
- 4 PROVIDE STANDARD LINE VOLTAGE OVERRIDE SWITCH TO TURN LIGHTS OFF WHEN ROOM IS OCCUPIED. WIRE AS SHOWN.



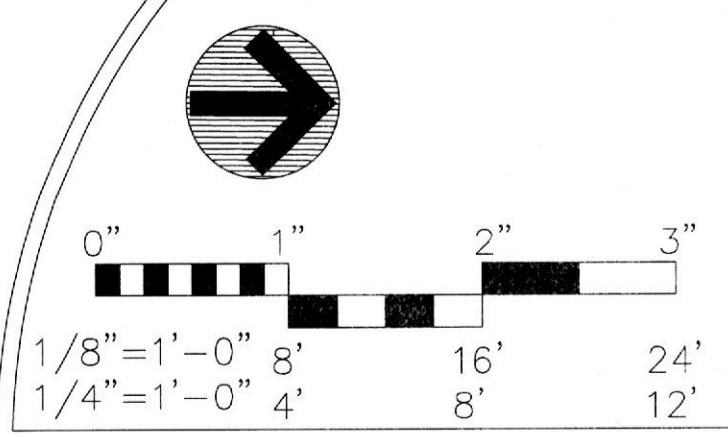
3 E-1  
FLOOR PLAN - DEMOLITION  
SCALE: 1/16"=1'-0"

TYPE	MOUNTING	DESCRIPTION	VOLTAGE	CATALOG NO.
Ⓜ	CEILING	UNIVERSAL VOLTAGE POWER PACK. PROVIDE JUNCTION BOX.	120/277V	WATT STOPPER BZ-150
Ⓜ	CEILING	DUAL TECHNOLOGY PASSIVE INFRARED AND ULTRASONIC CEILING SENSOR FOR OPEN AREAS.	120/277V	WATT STOPPER DT-305 CEILING SENSOR
Ⓜ	WALL	PASSIVE INFRARED WALL SWITCH SENSOR	120/277V	WATT STOPPER WS-250
Ⓜ	CEILING	DUAL TECHNOLOGY PASSIVE INFRARED AND ULTRASONIC CEILING SENSOR. MAXIMUM LOAD 800W.	120/277V	WATT STOPPER DT-355 LINE VOLTAGE CEILING SENSOR

LIGHTING FIXTURE SCHEDULE

TYPE	LAMPS	MOUNTING	DESCRIPTION	VOLTS	CATALOG NO.
A	2-F032TB 41K	RECESSED CEILING GRID	2x4 RECESSED FLUORESCENT WITH STANDARD LENS AND ELECTRONIC BALLAST	LITHONIA # ZGT8-232-A12 MVOLT-GEBIORS	
A1	4-F032TB 41K	SURFACE DRYWALL	2x4 SURFACE FLUORESCENT TROFFER WITH STANDARD LENS, FULLY GASKETED FLUSH STEEL DOOR AND TWO ELECTRONIC BALLAST(2 LAMP). FOR DUAL LIGHT LEVEL.	LITHONIA # 2M-432-A12 MVOLT-GEBIORS	
B	3-F032TB 41K	CEILING RECESSED	2x4 FLUORESCENT TROFFER WITH STANDARD LENS, FULLY GASKETED FLUSH STEEL DOOR AND TWO ELECTRONIC BALLASTS	LITHONIA # 2PM30833Z 180VOLT-GEBIORS	
D	2-26WDTT 41K	CEILING RECESSED	6" DIA FLUORESCENT DOWNLIGHT WITH HORIZONTAL LAMP, CLEAR ALZAK AND HPF BALLAST	UNIVERSAL LITHONIA (GOTHAM) # NFZ/26DTTBAR-MVOLT	
G	INCLUDED	SURFACE	OPERATING LIGHT WITH FLEXIBLE ARM AND INTEGRAL SWITCH	120V	FURNISHED BY OWNER
H	1-26WDTT 41K	CEILING RECESSED	6" DIA FLUORESCENT DOWNLIGHT WITH HORIZONTAL LAMP, FLAT FRESNEL LENS, FOAM GASKETING AND HPF BALLAST. UL LISTED AND LABELED SUITABLE FOR WET LOCATIONS	UNIVERSAL LITHONIA (GOTHAM) # LGF-1/26DTT-BRW-PFL-MVOLT-GSKT	
X	LED	UNIVERSAL	LED "X-RAY IN USE" SIGN WITH WHITE HOUSING, RED LETTERS	120V	LITHONIA # LQM P WR120M "X-RAY IN USE"
E1	LED	UNIVERSAL (TOP, END BACK)	LED EMERGENCY EXIT SIGN WITH WHITE HOUSING AND INTEGRAL BATTERY / CHARGER REFER TO FLOOR PLANS FOR MOUNTING AND LOCAL CODES FOR COLOR OF LETTERS.	120/277V	LITHONIA LQM SERIES
E2	2-DC (5-4WTS)	SURFACE WALL OR CEILING	6 VOLT EMERGENCY BATTERY LIGHT WITH INTEGRAL LEAD CALCIUM BATTERY AND CHARGER	120/277V	LITHONIA # QUANTUM SERIES ELM2
E3	LED	UNIVERSAL (TOP, END BACK)	SELF POWERED COMBINATION LED EXIT/2 LAMP EMERGENCY LIGHT WITH INTEGRAL HIGH OUTPUT BATTERY AND CHARGER. ARROWS AND FACING AS SHOWN - LETTER COLOR PER LOCAL CODE.	120/277V	LITHONIA # LH0MSW3R/G 120/277H0
E4	2-DC (6WATT-H)	WEATHERPROOF WALL	TWIN HEAD WEATHERPROOF REMOTE EMERGENCY LIGHTING HEAD, SEALED AND GASKETED, WHITE FINISH.	6V DC	LITHONIA # ELA-W-T-NX-H0806

NOTE:  
ALL LIGHTING FIXTURES SHALL BE APPROVED BY THE OWNER AND ARCHITECT PRIOR TO ORDERING.



FLOOR PLAN - LIGHTING AND SCHEDULES

REV#	DATE	REVISIONS	DRAWING NO.
1	7/16/13	OWNER'S REVISION	E-101.00

DATE: 4/18/13  
JOB NUMBER: 11206  
D.C. CHECKED BY: SM  
SMM  
SDI # 2013-01H

SDI Design, LLC.  
Mechanical • Electrical  
31714 Oving Road  
Frederick, Maryland 21053  
Phone: 410-3574374  
Fax: 410-3574174

TENANT RENOVATIONS FOR:  
Access Center  
1733 Eastchester Road  
Bronx, NY 10461

Lifeline  
Vascular Access

INS vnc  
ARCHITECTURAL DESIGNS, INC.  
1213 Old Pylesville Road  
Whiteford, MD 21160  
Office: 410-452-8006  
Fax: 410-452-8046



ISSUED FOR BUILDING PERMIT