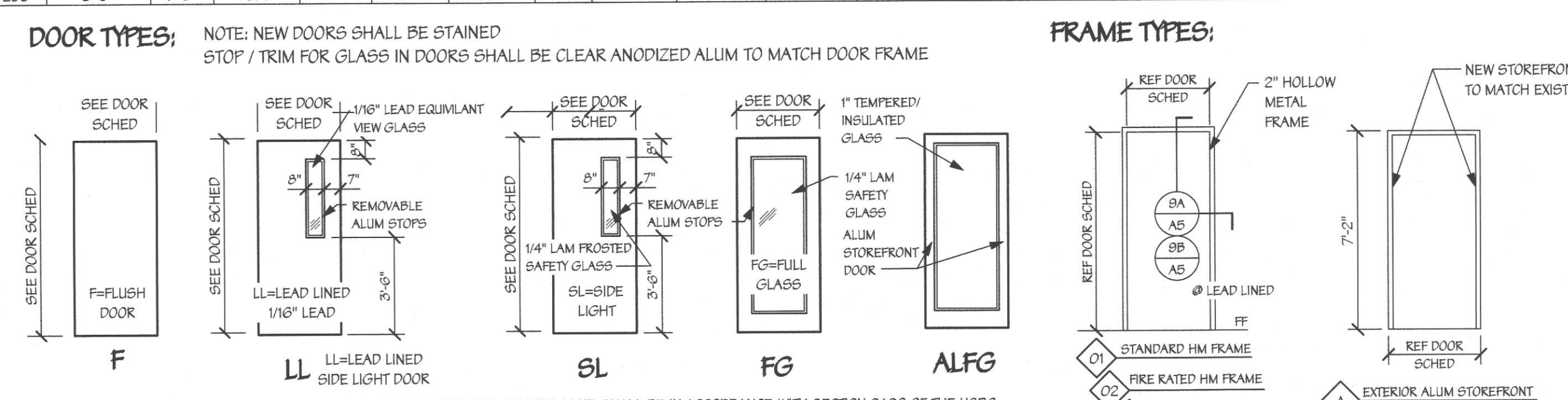


Frame #	Door Width	Door Ht	Door Thick	Door Type	Door Matl	Door Fin	Lower	Frame Type	Frame Matl	Frame Depth	Hardware	Fire Rating	Remark
100	3'-0"	7'-0"	1 3/4"	EXST	ALFG	ALUM	MATCH EX	-	A	ALUM	EXST	A1	MATCH EX - NOTE #1
101a	3'-0"	7'-0"	1 3/4"	EXST	ALFG	ALUM	MATCH EX	-	A	ALUM	EXST	A2	MATCH EX - NOTE #1
101b	3'-0"	7'-0"	1 3/4"	EXST	ALFG	ALUM	MATCH EX	-	A	ALUM	EXST	A2	PROFIED GLASS, OTHER FULL SIDE
102	3'-0"	7'-0"	1 3/4"	F	SL	SC-WD	STAINED	-	01	HM	5/78"	B1	-
103	3'-0"	7'-0"	1 3/4"	F	SC-WD	STAINED	-	02	HM	5/78"	F	-	NOTE #1
104	3'-0"	7'-0"	1 3/4"	F	SC-WD	STAINED	-	01	HM	5/78"	E	-	-
105	3'-0"	7'-0"	1 3/4"	F	SC-WD	STAINED	-	01	HM	5/78"	D	-	-
106	3'-0"	7'-0"	1 3/4"	F	SC-WD	STAINED	YES	01	HM	5/78"	C	-	2 LOWERS-12"x24" TOP/BOT
107	3'-0"	7'-0"	1 3/4"	F	SC-WD	STAINED	-	02	HM	5/78"	E	45 MIN	DOOR TO HAVE U-FACTOR OF 0.61
110	3'-0"	7'-0"	1 3/4"	F	SC-WD	STAINED	-	02	HM	5/78"	F	-	-
111	3'-0"	7'-0"	1 3/4"	F	SC-WD	STAINED	-	01	HM	5/78"	C	-	-
112	3'-0"	7'-0"	1 3/4"	F	SC-WD	STAINED	-	01	HM	5/78"	D	-	-
113	3'-0"	7'-0"	1 3/4"	F	SC-WD	STAINED	-	01	HM	5/78"	D	-	-
114a	3'-0"	7'-0"	1 3/4"	F	SC-WD	STAINED	-	01	HM	5/78"	D	-	UNDERCUT 1" OTHER FULL SIDE
115	3'-0"	7'-0"	1 3/4"	F	SC-WD	STAINED	-	01	HM	5/78"	F	-	-
116	3'-0"	7'-0"	1 3/4"	F	SC-WD	STAINED	-	01	HM	5/78"	F	-	-
117	3'-0"	7'-0"	1 3/4"	SL	SC-WD	STAINED	-	01	HM	5/78"	B	-	PROFIED GLASS, OTHER FULL SIDE
118	4'-0"	7'-0"	1 3/4"	EXST	ALFG	ALUM	MATCH EX	-	A	ALUM	EXST	K	MATCH EX
121	3'-0"	7'-0"	1 3/4"	F	SC-WD	STAINED	-	01	HM	5/78"	F	-	-
123a	4'-0"	7'-0"	1 3/4"	F	SC-WD	STAINED	-	01	HM	5/78"	G	-	-
123b	3'-0"	7'-0"	1 3/4"	SL	SC-WD	STAINED	-	01	HM	5/78"	B2	-	PROFIED GLASS, OTHER FULL SIDE
125	3'-0"	7'-0"	1 3/4"	F	SC-WD	STAINED	-	01	HM	5/78"	D	-	-
126	4'-0"	7'-0"	1 3/4"	LL	SC-WD	STAINED	-	03	HM	5/78"	H	-	1/8" LEAD LINED DR/FRAME
127	4'-0"	7'-0"	1 3/4"	LL	SC-WD	STAINED	-	03	HM	5/78"	H	-	1/8" LEAD LINED DR/FRAME
128	4'-0"	7'-0"	1 3/4"	LL	SC-WD	STAINED	-	03	HM	5/78"	H	-	1/8" LEAD LINED DR/FRAME
129	3'-0"	7'-0"	1 3/4"	F	SC-WD	STAINED	-	01	HM	5/78"	E	-	-
130	3'-0"	7'-0"	1 3/4"	F	SC-WD	STAINED	-	01	HM	5/78"	E	-	-
131	3'-0"	7'-0"	1 3/4"	F	SC-WD	STAINED	-	02	HM	5/78"	E	45 MIN	-
132	3'-0"	7'-0"	1 3/4"	F	SC-WD	STAINED	-	02	HM	5/78"	E	45 MIN	-
133	3'-0"	7'-0"	1 3/4"	F	SC-WD	STAINED	-	02	HM	5/78"	E	45 MIN	-
201	3'-0"	7'-0"	1 3/4"	F	SC-WD	STAINED	-	02	HM	5/78"	E	45 MIN	NOTE #1
202a	3'-0"	7'-0"	1 3/4"	F	SC-WD	STAINED	-	02	HM	5/78"	E	45 MIN	NOTE #1
202b	3'-0"	7'-0"	1 3/4"	F	SC-WD	STAINED	-	01	HM	5/78"	D	-	-
203	3'-0"	7'-0"	1 3/4"	EXST	ALFG	ALUM	MATCH EX	-	A	ALUM	EXST	J	MATCH EX
204	3'-0"	7'-0"	1 3/4"	HG	SC-WD	STAINED	-	01	HM	5/78"	C	-	-
205	3'-0"	7'-0"	1 3/4"	F	SC-WD	STAINED	-	01	HM	5/78"	F	-	-
206a	3'-0"	7'-0"	1 3/4"	F	SC-WD	STAINED	-	01	HM	5/78"	D	-	-
206b	3'-0"	7'-0"	1 3/4"	F	SC-WD	STAINED	-	01	HM	5/78"	D	-	-
207	3'-0"	7'-0"	1 3/4"	F	SC-WD	STAINED	YES	01	HM	5/78"	C	-	2 LOWERS-12"x24" TOP/BOT
208	3'-0"	7'-0"	1 3/4"	F	SC-WD	STAINED	-	01	HM	5/78"	D	-	-
209	3'-0"	7'-0"	1 3/4"	F	SC-WD	STAINED	-	01	HM	5/78"	C	-	-

GENERAL NOTE:
ALL DOORS AND DOOR
HARDWARE SHALL COMPLY WITH
SECTION 404 OF ICC/ANSI 117.1

GENERAL NOTE:
ALL DOOR HARDWARE SHALL BE
INSTALLED IN ACCORDANCE
WITH ADA AND ANCI
RECOMMENDATIONS. LEVER
LOCKSETS SHALL BE
INSTALLED WITH CENTER OF
LEVEL HANDLES AT 36" AFF.

NOTES:
NOTE #1 - DOOR AND FRAME
FINISH ON PUBLIC / CORRIDOR
SIDE SHALL MATCH LANDLORD
STANDARDS FOR TENANT
DOORS.



HARDWARE TYPES:
GENERAL HARDWARE NOTE: ALL COMPONENTS OF HARDWARE SHALL BE PROVIDED FOR A COMPLETELY FUNCTIONING HARDWARE INSTALLATION. ALL COMPONENTS SHALL COMPLY WITH LOCAL, STATE AND FEDERAL (ADA) DISABILITY REQUIREMENTS. ALL EGRESS DOORS SHALL BE READILY OPENABLE FROM THE SIDE FROM WHICH EGRESS IS TO BE MADE WITHOUT A KEY OR SPECIAL KNOWLEDGE OR EFFORT. NEW DOORS SHALL BE KEYPED TO MATCH THE EXISTING TENANT AND BUILDING KEYING SYSTEM.

ALL LOCKSETS SHALL BE EQUAL TO THE 4700 (LN) SERIES, LEVER HANDLE LOCKSETS (US260 FINISH) BY YALE WITH PACIFIC BEACH (PB) LEVER DESIGN AND FULL SIZE INTERCHANGEABLE CORES. HARDWARE SHALL BE INSTALLED PER MANUFACTURER'S RECOMMENDATIONS FOR THE VARIOUS CONDITIONS ENCOUNTERED.

TYPE "A1" - PROVIDE STOREFRONT MANUFACTURER'S STANDARD HARDWARE FOR A COMPLETE INSTALLATION TO INCLUDE DEADLATCH HANDLES / CYLINDER EQUAL TO 4580 BY ADAMS RITE, HINGES, DOOR STOP, PUSH/PULL DOOR HARDWARE, FULL WEATHER-STRIPPING AND ADA APPROVED ALUMINUM THRESHOLD. INSTALL PER MANUFACTURER'S RECOMMENDATIONS. PROVIDE SWING DOOR HEAVY DUTY ELECTROMECHANICAL AUTOMATIC OPENER, SERIES 8100 BY RECORD USA - CONTACT DAVID GRADLE 708-514-6610. (COORDINATE TIMING WITH OWNER). REFER TO FLOOR PLAN FOR REQUIRED CONTROL PADDLE LOCATIONS AND TO DETAIL 2E/A6 FOR DOOR CONTROL DIAGRAM / REQUIREMENTS.

TYPE "A2" - PROVIDE STOREFRONT MANUFACTURER'S STANDARD HARDWARE FOR A COMPLETE INSTALLATION TO INCLUDE DEADLATCH HANDLES / CYLINDER EQUAL TO 4580 BY ADAMS RITE, ELECTRIC STRIKE EQUAL TO THE 5000 ELECTRIC STRIKE SERIES BY HES INNOVATIONS, HINGES, DOOR STOP, PUSH/PULL DOOR HARDWARE. INSTALL PER MANUFACTURER'S RECOMMENDATIONS. PROVIDE SWING DOOR HEAVY DUTY ELECTROMECHANICAL AUTOMATIC OPENER, SERIES 8100 BY RECORD USA - CONTACT DAVID GRADLE 708-514-6610. (COORDINATE TIMING WITH OWNER). NOTE THAT STRIKE SHALL FALL LOCKED IN THE EVENT OF A POWER OUTAGE. REFER TO FLOOR PLAN FOR REQUIRED CONTROL PADDLE LOCATIONS AND TO DETAIL 2E/A6 FOR DOOR CONTROL DIAGRAM / REQUIREMENTS.

TYPE "B1" - PROGRAMMABLE ELECTRONIC ENTRY LOCK EQUAL TO YALE "INTOUCH" PB E4761LN. LOCK SHALL BE PROVIDED WITH PASSAGE MODE/FUNCTION. INSTALLATION TO INCLUDE ELECTRIC STRIKE EQUAL TO THE 5000 ELECTRIC STRIKE SERIES BY HES INNOVATIONS. WIRE ELECTRIC STRIKE TO PUSH BUTTON LOCATED IN RECEPTION TO ALLOW SOMEONE TO BE "BUZZED IN". SEE CONSTRUCTION FLOOR PLAN FOR LOCATION AND REFER TO DETAIL 2E/A6. CORBIN DC3200 SERIES SURFACE APPLIED DELAYED ACTION DOOR CLOSER (COORDINATE TIMING WITH OWNER), 4 1/2" BUTT HINGES (MINIMUM 3 PER LEAF) BY STANLEY, WALL STOP BY ROCKWOOD.

TYPE "B2" - PROGRAMMABLE ELECTRONIC ENTRY LOCK EQUAL TO YALE "INTOUCH" PB E4761LN. LOCK SHALL BE PROVIDED WITH PASSAGE MODE/FUNCTION. CORBIN DC3200 SERIES SURFACE APPLIED DELAYED ACTION DOOR CLOSER (COORDINATE TIMING WITH OWNER), 4 1/2" BUTT HINGES (MINIMUM 3 PER LEAF) BY STANLEY, WALL STOP BY ROCKWOOD.

TYPE "C" - FUNCTION 4707LN (OFFICE FUNCTION), 4 1/2" BUTT HINGES (MINIMUM 3 PER LEAF) BY STANLEY, WALL STOP BY ROCKWOOD.

TYPE "D" - FUNCTION 4701LN (PASSAGE FUNCTION), 4 1/2" BUTT HINGES (MINIMUM 3 PER LEAF) BY STANLEY, WALL STOP BY ROCKWOOD.

TYPE "E" - FUNCTION 4707LN (OFFICE FUNCTION), CORBIN DC3200 SERIES SURFACE APPLIED DOOR CLOSER, 4 1/2" BUTT HINGES (MINIMUM 3 PER LEAF) BY STANLEY, WALL STOP BY ROCKWOOD.

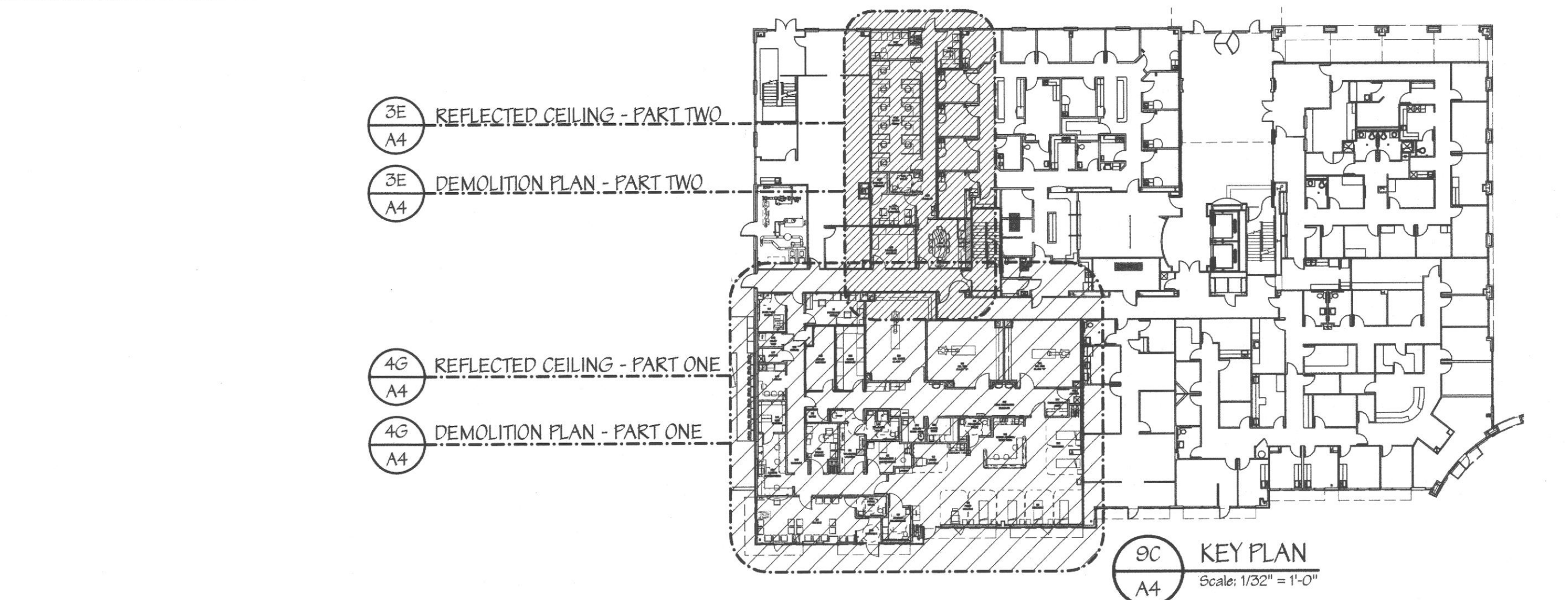
TYPE "F" - FUNCTION 4702LN (PRIVACY FUNCTION), 4 1/2" BUTT HINGES (MINIMUM 3 PER LEAF) BY STANLEY, WALL STOP BY ROCKWOOD.

TYPE "G" - PUSH PLATE "100" BY LINDSTROM ON "PUSH" SIDE AND PULL PLATE "100X810" BY LINDSTROM ON "PULL" SIDE OF DOOR. KICKPLATES ON EACH SIDE OF DOOR - #37 16"x46" US260 BY BALDWIN HARDWARE CORP., PROVIDE SWING DOOR HEAVY DUTY ELECTROMECHANICAL AUTOMATIC OPENER, SERIES 8100 BY RECORD USA - CONTACT DAVID GRADLE 708-514-6610, 4 1/2" BUTT HINGES (MINIMUM 3 PER LEAF) BY STANLEY, WALL STOP BY ROCKWOOD. ELECTROMECHANICAL OPENER SHALL BE PROVIDED WITH OPTION THAT ACTIVATES OPENER WHEN LEAF IS OPENED MANUALLY. COORDINATE OPENING SPEED SETTINGS WITH OWNER. REFER TO PLAN FOR LOCATION OF PUSH PADDLES TO OPERATE AUTOMATIC DOOR OPENER.

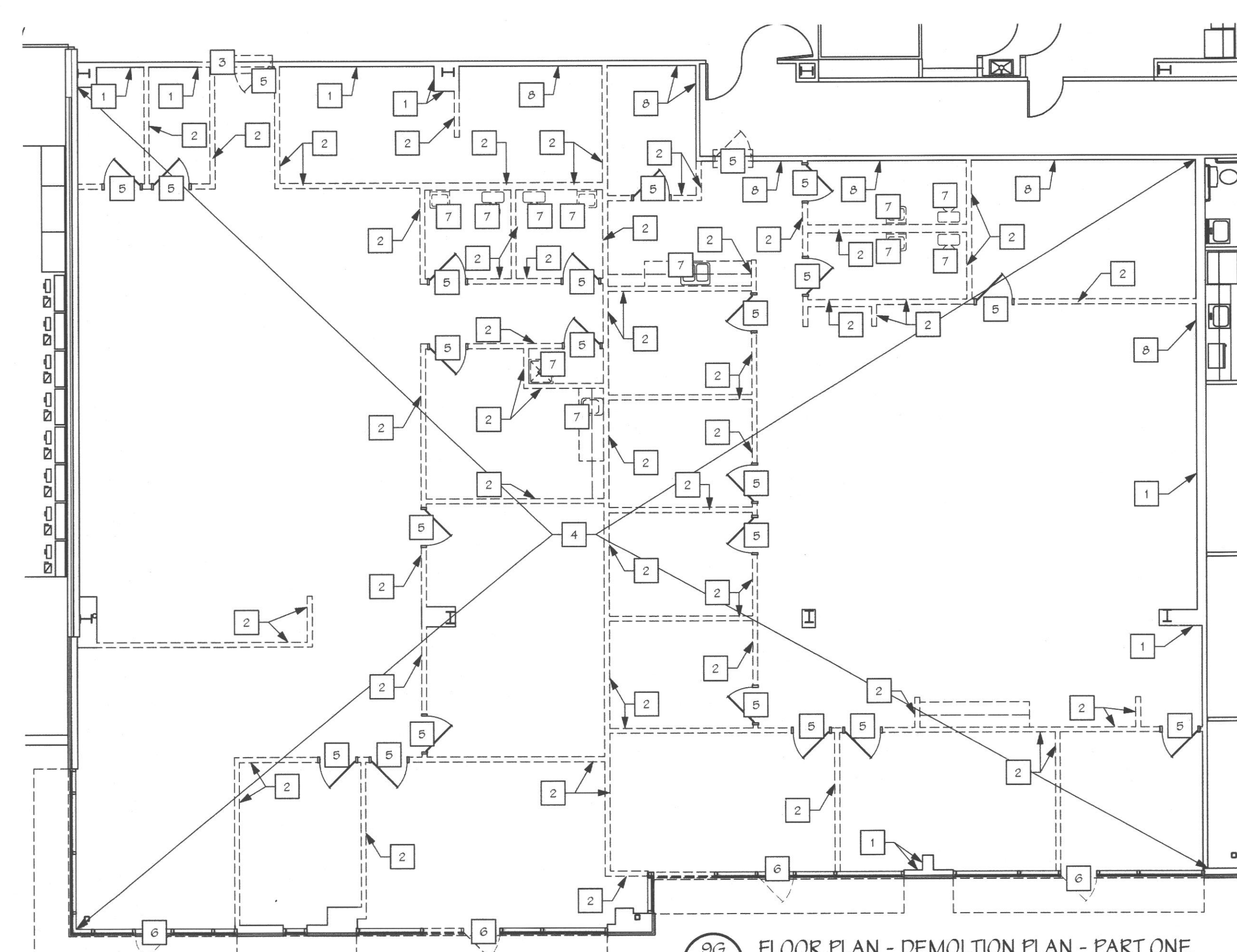
TYPE "H" - PROVIDE PUSH/PULL LATCH EQUAL TO HL-G PUSH/PULL LATCH BY GUNN-JOHNSON (US260FINISH) IN MOUNTING POSITION "C" WITH "B" BACKSET AND KEYPED DEAD BOLT WITH INTERIOR THUMB TURN MOUNTED ABOVE (GAREFULLY COORDINATE MOUNTING HEIGHTS WITH OWNER). 147 PIVOT SET WITH M18 INTERMEDIATE PIVOT BY KINGSON PER LEAF, HEAVY DUTY DOOR CLOSURE WITH HOLD OPEN OPTION - CORBIN RL85WIN CD3200 X A1 HOLDOPEN 666 X LEAD LINED COVER, KICKPLATE #37 16"x46" US260 BY BALDWIN HARDWARE CORP ON EACH SIDE OF DOOR, WALL STOP BY ROCKWOOD.

TYPE "J" - PROVIDE STOREFRONT MANUFACTURER'S STANDARD HARDWARE FOR A COMPLETE INSTALLATION TO INCLUDE LOCKING CYLINDER WITH INTERIOR THUMB TURN, HEAVY DUTY CLOSURE, HINGES, DOOR STOP, PUSH/PULL DOOR HARDWARE, FULL WEATHER-STRIPPING AND ADA APPROVED ALUMINUM THRESHOLD. INSTALL PER MANUFACTURER'S RECOMMENDATIONS. MATCH EXISTING EXTERIOR STOREFRONT HARDWARE AND COORDINATE WITH LANDLORD.

TYPE "K" - PROVIDE STOREFRONT MANUFACTURER'S STANDARD HARDWARE FOR A COMPLETE INSTALLATION TO INCLUDE DEADLATCH HANDLES / CYLINDER EQUAL TO 4580 BY ADAMS RITE, ELECTRIC STRIKE EQUAL TO THE 5000 ELECTRIC STRIKE SERIES BY HES INNOVATIONS, HEAVY DUTY CLOSURE, HINGES, DOOR STOP, PUSH/PULL DOOR HARDWARE, FULL WEATHER-STRIPPING AND ADA APPROVED ALUMINUM THRESHOLD. HARDWARE TO BE SIMILAR TO EXISTING AND INSTALLED PER MANUFACTURER'S RECOMMENDATIONS. REFER TO DETAIL 2E/A6 FOR DOOR CONTROL DIAGRAM / REQUIREMENTS

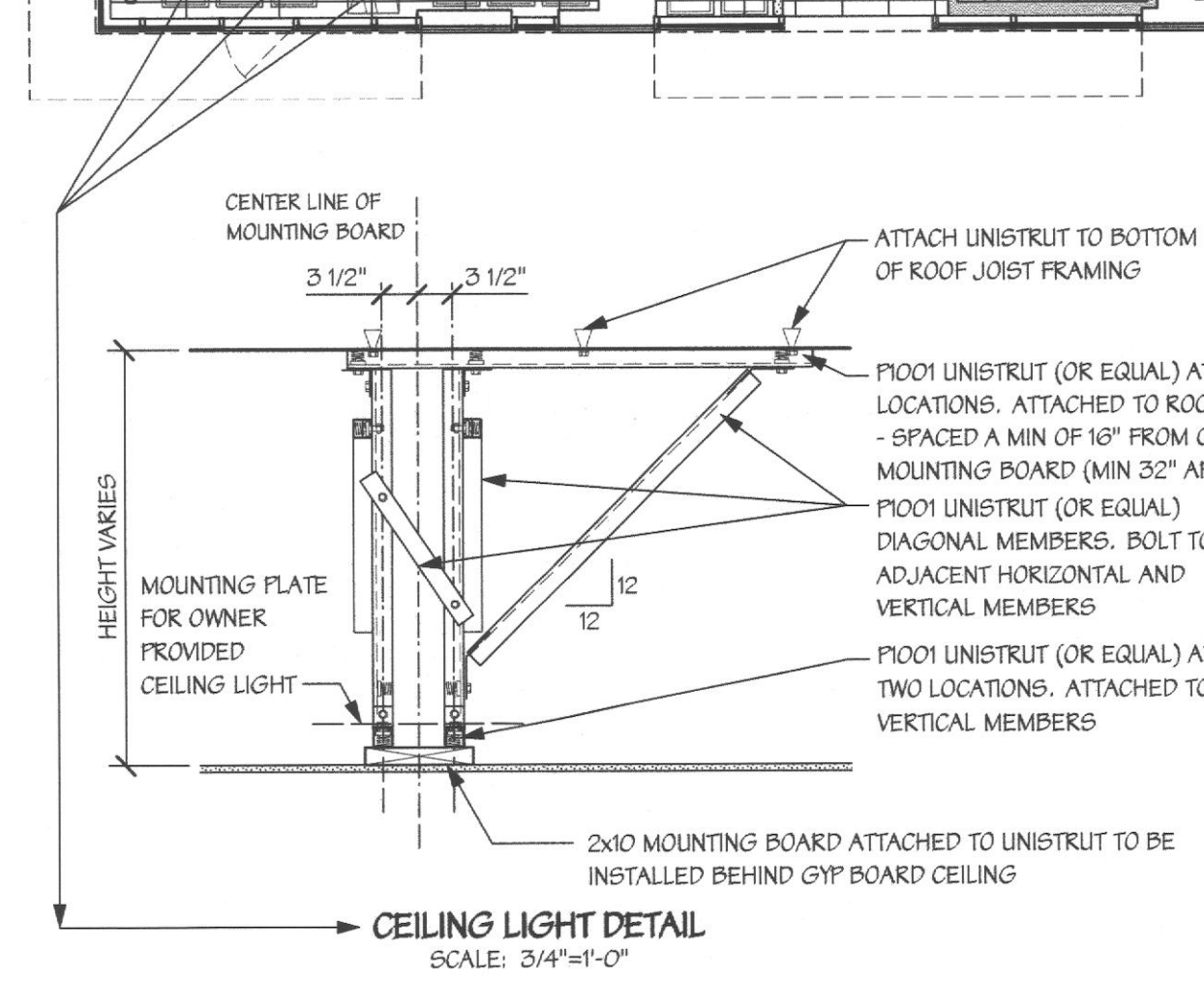
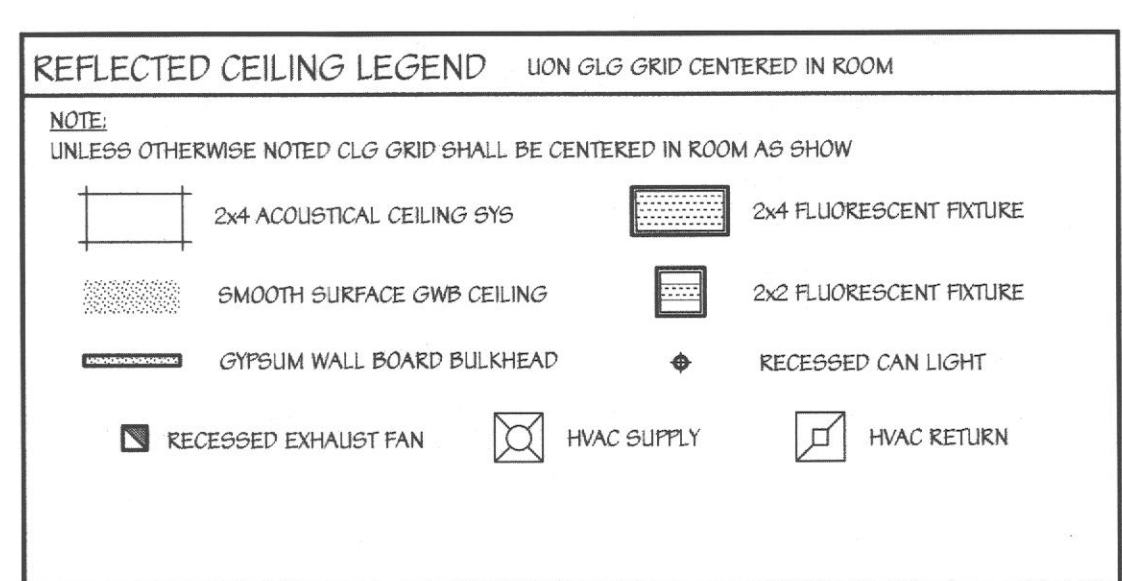


8D FLOOR PLAN - DEMOLITION PLAN - PART TWO
Scale: 1/8" = 1'-0"



3E FLOOR PLAN - REFLECTED CEILING - PART TWO
Scale: 1/8" = 1'-0"

NOTE:
ALL MECHANICAL AND ELECTRICAL WORK SHOWN FOR GRAPHICAL PURPOSES ONLY.



SUPPLY NEW 2x2x6 FOOT LONG MOUNTING BOARD PER DETAIL ABOVE FOR OWNER PROVIDED SUSPENDED LIGHT. LIGHT UNIT IS ABOUT 80 POUNDS. MOUNTING BOARD SHALL BE INSTALLED BEHIND GYP BOARD CEILING AND SHALL BE HUNG FROM BOTTOM OF ROOF FRAMING ABOVE. PROVIDE LATERAL BRACING SUCH THAT UNIT WILL NOT SWAY. COORDINATE WITH OWNER'S VENDOR.

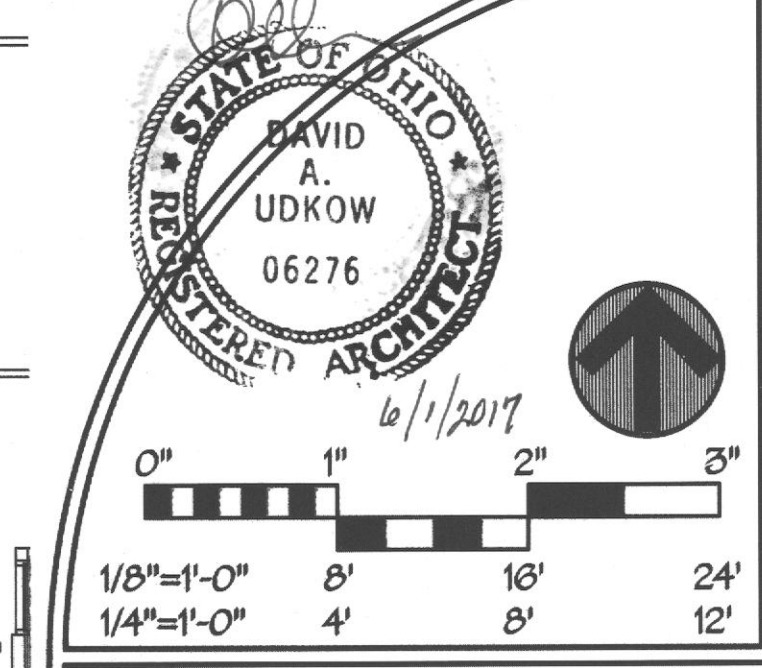
4C FLOOR PLAN - REFLECTED CEILING - PART ONE
Scale: 1/8" = 1'-0"

NOTE:
ALL MECHANICAL AND ELECTRICAL WORK SHOWN FOR GRAPHICAL PURPOSES ONLY.

DEMOLITION NOTES

1 DESIGNATES A DEMOLITION NOTE THAT CORRESPONDS TO THE NOTES BELOW.

- EXISTING CONSTRUCTION TO REMAIN. REFER TO NEW PLAN FOR ADDITIONAL REQUIREMENTS.
- REMOVE EXIST STUD/GWP PARTITIONS AND DOORS/FRAMES. TYPICAL THROUGHOUT AREA OF DEMOLITION.
- CAREFULLY REMOVE PORTION OF EXISTING WALL (AND EXIST DOOR WHERE APPLICABLE) FOR INSTALLATION OF NEW DOOR. COORDINATE WITH FLOOR PLAN AND LANDLORD.
- REMOVE EXISTING FLOORING IN THIS AREA AND PREPARE EXISTING CONCRETE FOR INSTALLATION OF NEW FINISHES. REMOVE EXISTING CEILING SYSTEM, INCLUDING LIGHTS AND DIFFUSERS, IN THIS AREA. REMOVE ABANDONED/UNUSED ITEMS IN CEILING SPACE IN PREPARATION FOR NEW WORK. COORDINATE LIMITS WITH FLOOR PLAN.
- REMOVE EXISTING DOOR AND FRAME.
- REMOVE EXISTING DOOR AND STOREFRONT IN THIS AREA AS INSTALL NEW STOREFRONT / DOOR AS INDICATED ON PLANS. WHERE REQUIRED, CAREFULLY SAWCUT AND REMOVE PORTIONS OF EXISTING WALL AS REQUIRED TO INSTALL NEW DOOR.
- REMOVE EXISTING PLUMBING FIXTURE, CAP AND SEAL ALL SUPPLY AND DRAINS AS REQUIRED.
- REMOVE EXISTING EXTERIOR GYP BOARD IN PROCEDURE ROOM AREA FOR INSTALLATION OF NEW LEAD LINED GYP BD. COORDINATE LIMITS WITH FLOOR PLAN.



DR SCHEDULE, DEMO AND CLG PLAN

REV#	DATE	REVISIONS	DESCRIPTION

DRAWING NO: **A4**

SHEET OF

DATE: 5/22/17

JOB NUMBER: 11232

CHECKED BY:

NOTE: CONTRACTOR AND SUB-CONTRACTORS SHALL VISIT THIS BUILDING AND TENANT AREA AND BE FAMILIAR WITH ALL THE EXISTING CONDITIONS PRIOR TO CONTRACT AWARD

ISSUED FOR BUILDING PERMIT

1301 Solera Blvd.
Building 1, Suite 1420
Westlake, Texas 76262
Phone: 817-251-8411
Fax: 817-251-8411

d p c e

don penn is consulting engineer

Lifeline Project Manager

In Syn c

Whiteford, MD 21160
1216 Old Pylesville Road
Office: 410-462-9006

David A. Udkow, Architect

11531 North 112th Way
Scottsdale, AZ 85259
Office: 480-614-0209
Fax: 480-614-5385

Email: david@udkow.com

TENANT RENOVATIONS FOR:

LIFELINE Access Center

4805 Montgomery Rd.,
Cincinnati, OH 45212