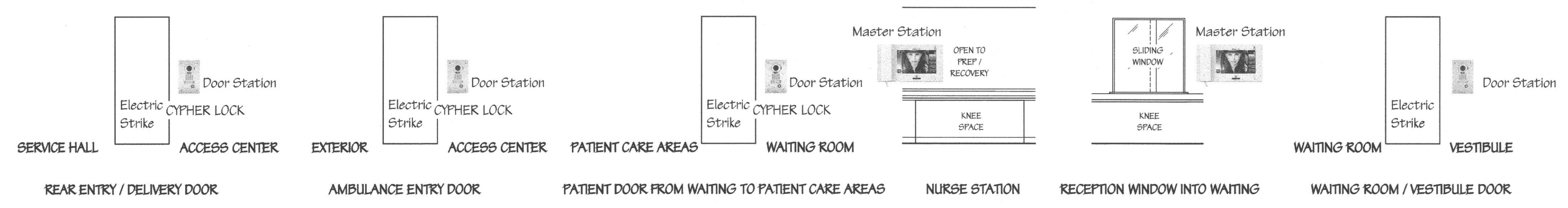


2E POWER ASSIST CLOSURES CONTROL DIAGRAMS
Scale: 1/4" = 1'-0"

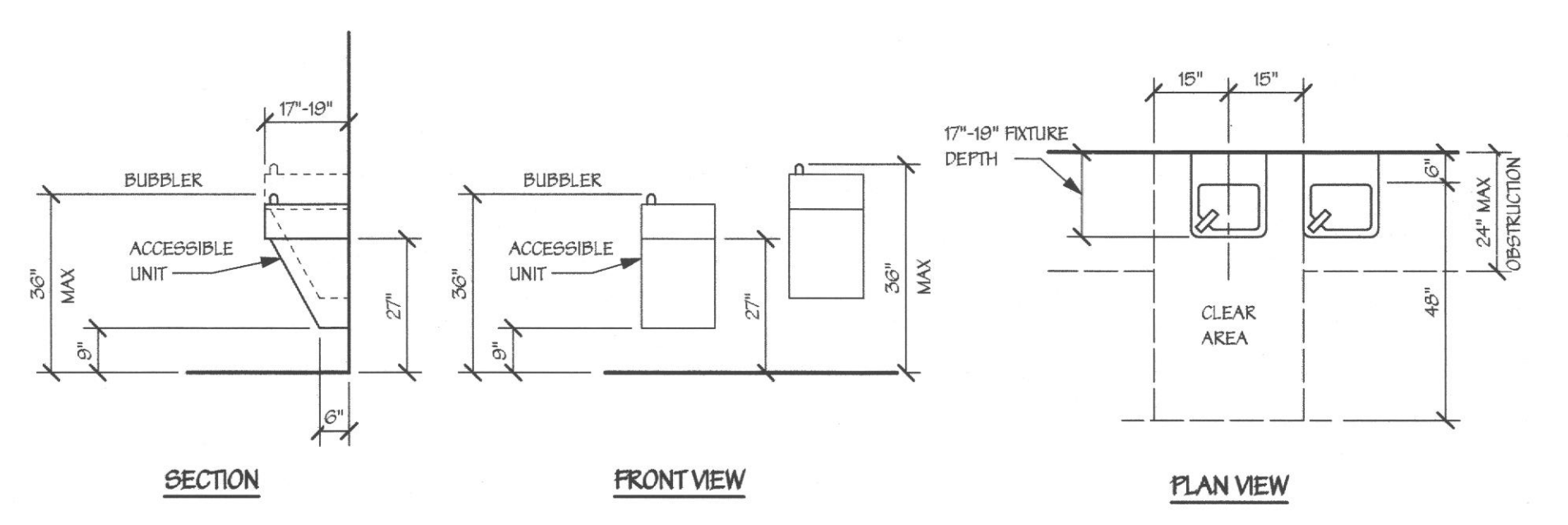


INTERCOM SYSTEM COMPONENTS:

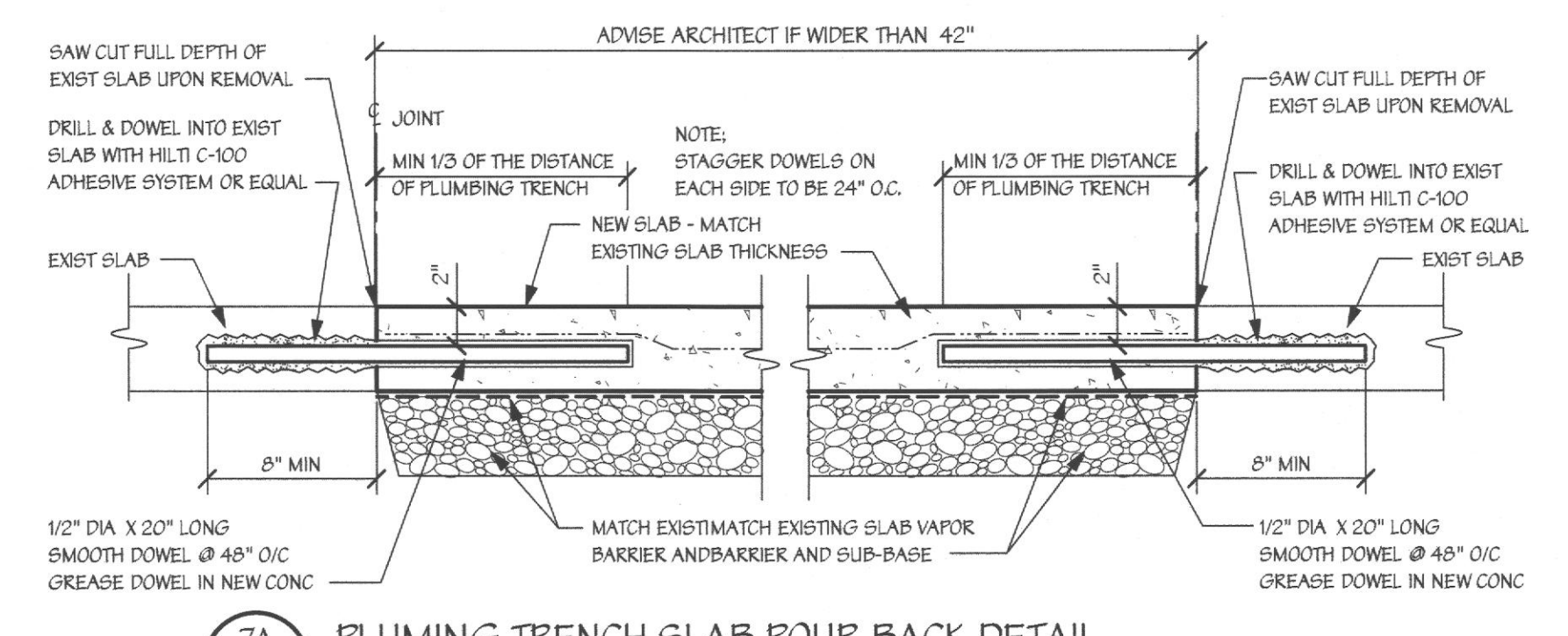
Qty	Model	Description
3	JP-DVF	VANDAL RESISTANT FLUSH MOUNT COLOR VIDEO DOOR STATION
1	JPS-4AEDF	7" TOUCHSCREEN HANDSET/HANDS-FREE 4 X 8 COLOR VIDEO SET (Set includes JP-DVF, JP-4MED, PS-2420UL)
1	JP-4HD	7" TOUCHSCREEN HANDSET/HANDS-FREE SUB MASTER FOR JP SERIES
1	RY-24L	FORM C DOOR RELEASE RELAY, 24V DC INPUT
1	RY-3DL	SELECTIVE DOOR RELEASE ADAPTOR

INTERCOM SYSTEM:
JP SERIES INTERCOM SYSTEM BY AIPHONE. DOOR STATIONS ARE INTENDED TO BE FLUSH MOUNTED. CONTROLS TO BE MOUNTED FOR ADA ACCESSIBILITY AND CAMERA IS TO BE TILTED UPWARD OR A SLOPED BOX DESIGNED TO ALLOW CAMERA TO SEE TO FACE LEVEL SHALL BE PROVIDED. IT IS INTENDED THAT THE DOORS WITH ELECTRIC STRIKES BE CONTROLLED FROM THIS SYSTEM. ELECTRIC STRIKES TO HAVE THEIR OWN POWER SOURCE AND BE WIRED INTO DOOR RELEASE RELAY. SYSTEM SHALL BE PROVIDED WITH REQUIRED POWER SUPPLY. SYSTEM WIRING SHALL BE PER MANUFACTURER'S REQUIREMENTS AND ALL OTHER ACCESSORY ITEMS SHALL BE PROVIDED FOR A COMPLETE OPERATIONAL SYSTEM AND INSTALLED IN ACCORDANCE WITH MANUFACTURER'S RECOMMENDATIONS AND STANDARD DETAILS.

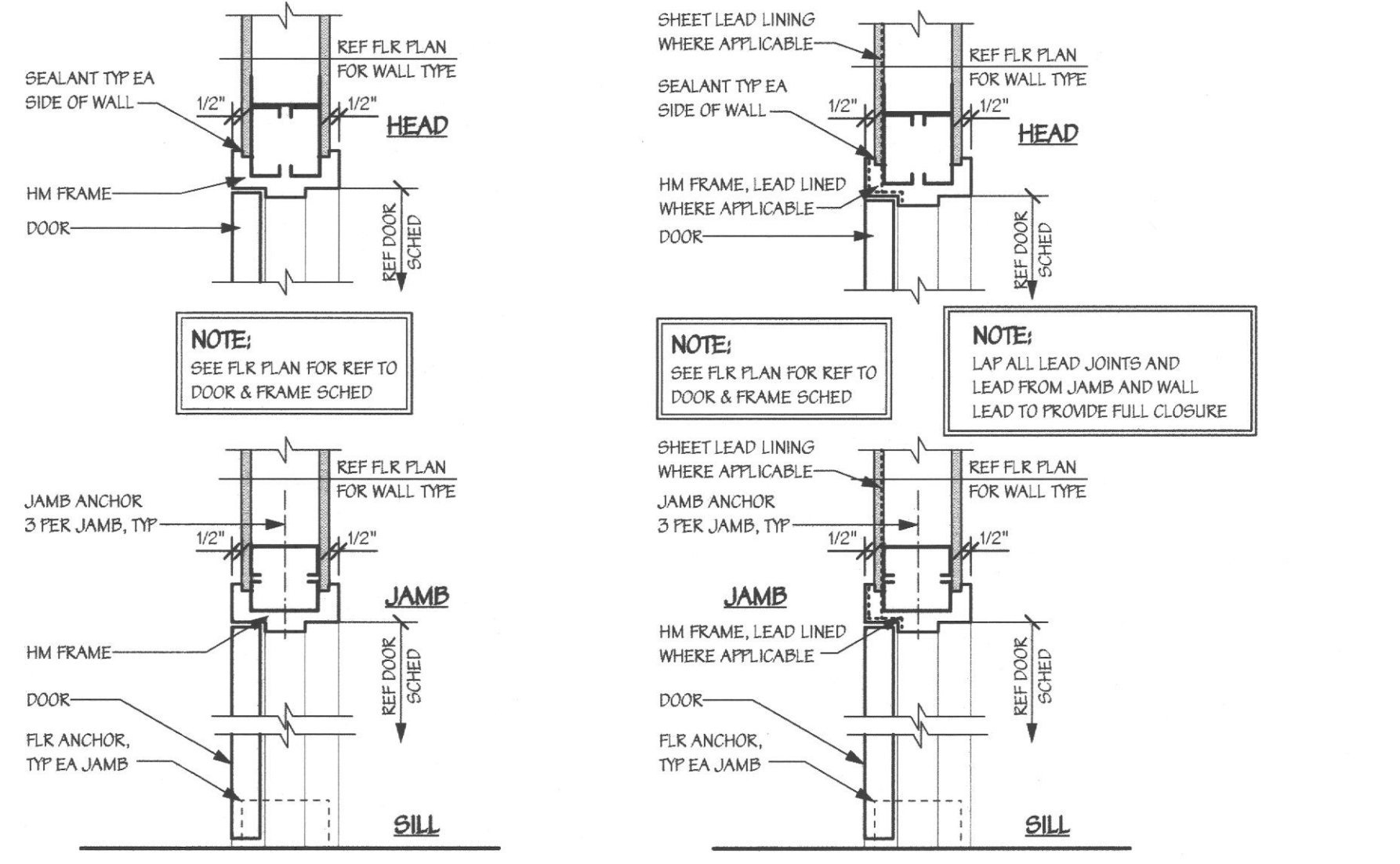
5D INTERCOM SYSTEM REQUIREMENTS
Scale: 1/4" = 1'-0"



6D DRINKING FOUNTAIN
Scale: 3/8" = 1'-0"



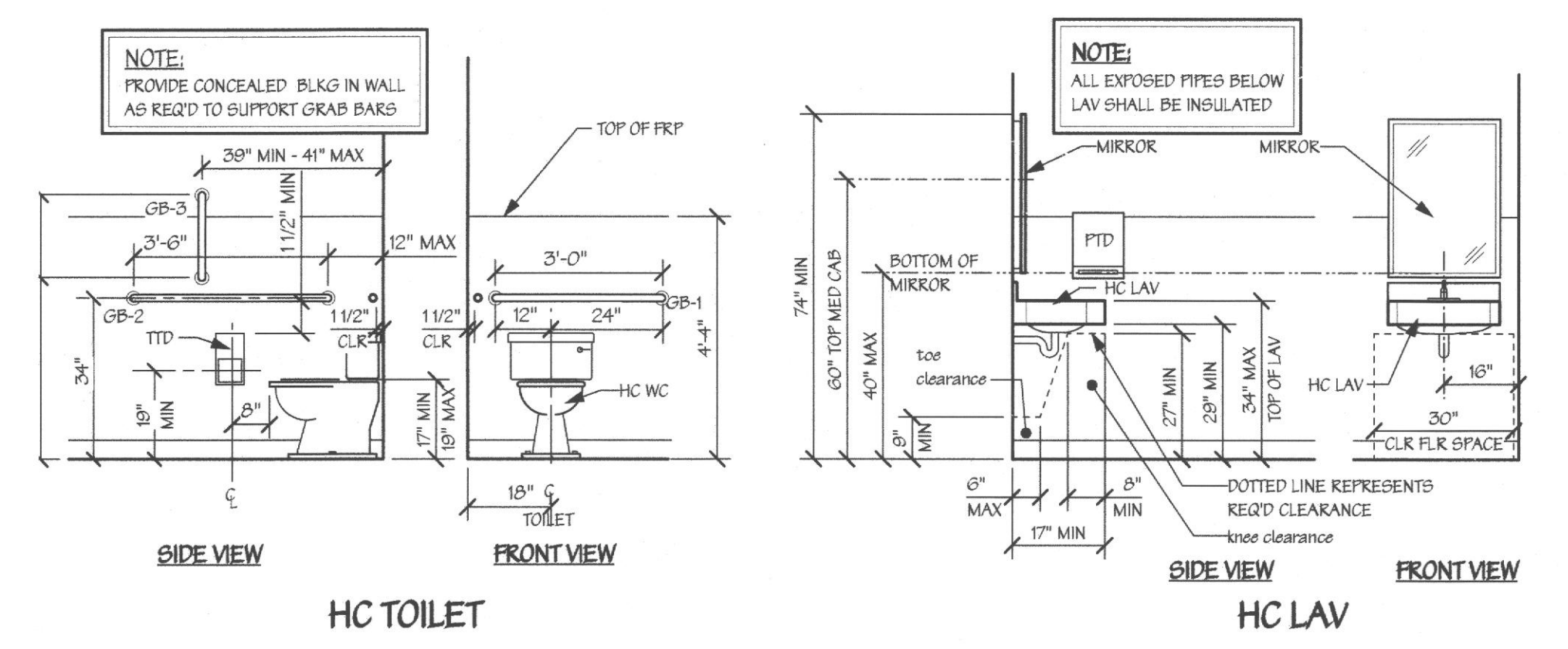
7A PLUMBING TRENCH SLAB FOUR BACK DETAIL
Scale: 1 1/2" = 1'-0"



9A TYP HM FRAME @ GYP
Scale: 1 1/2" = 1'-0"

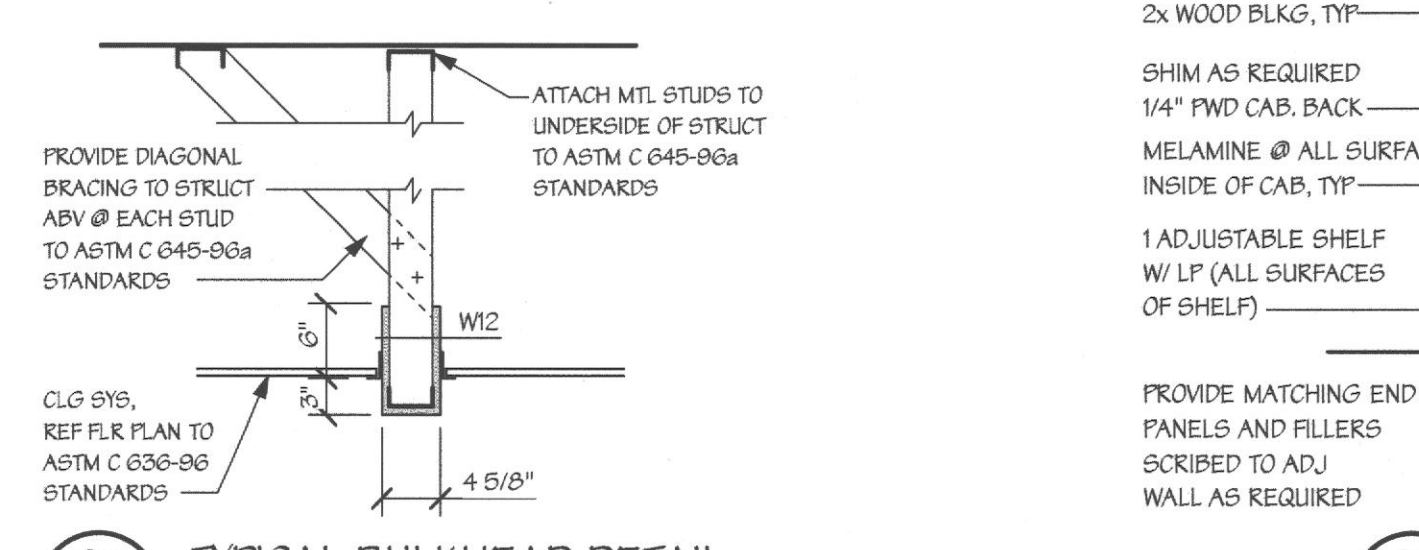
9B TYP LEAD LINED HM FRAME @ GYP
Scale: 1 1/2" = 1'-0"

8C ONE HOUR CEILING DETAIL - OXYGEN ROOM
Scale: 3/4" = 1'-0"

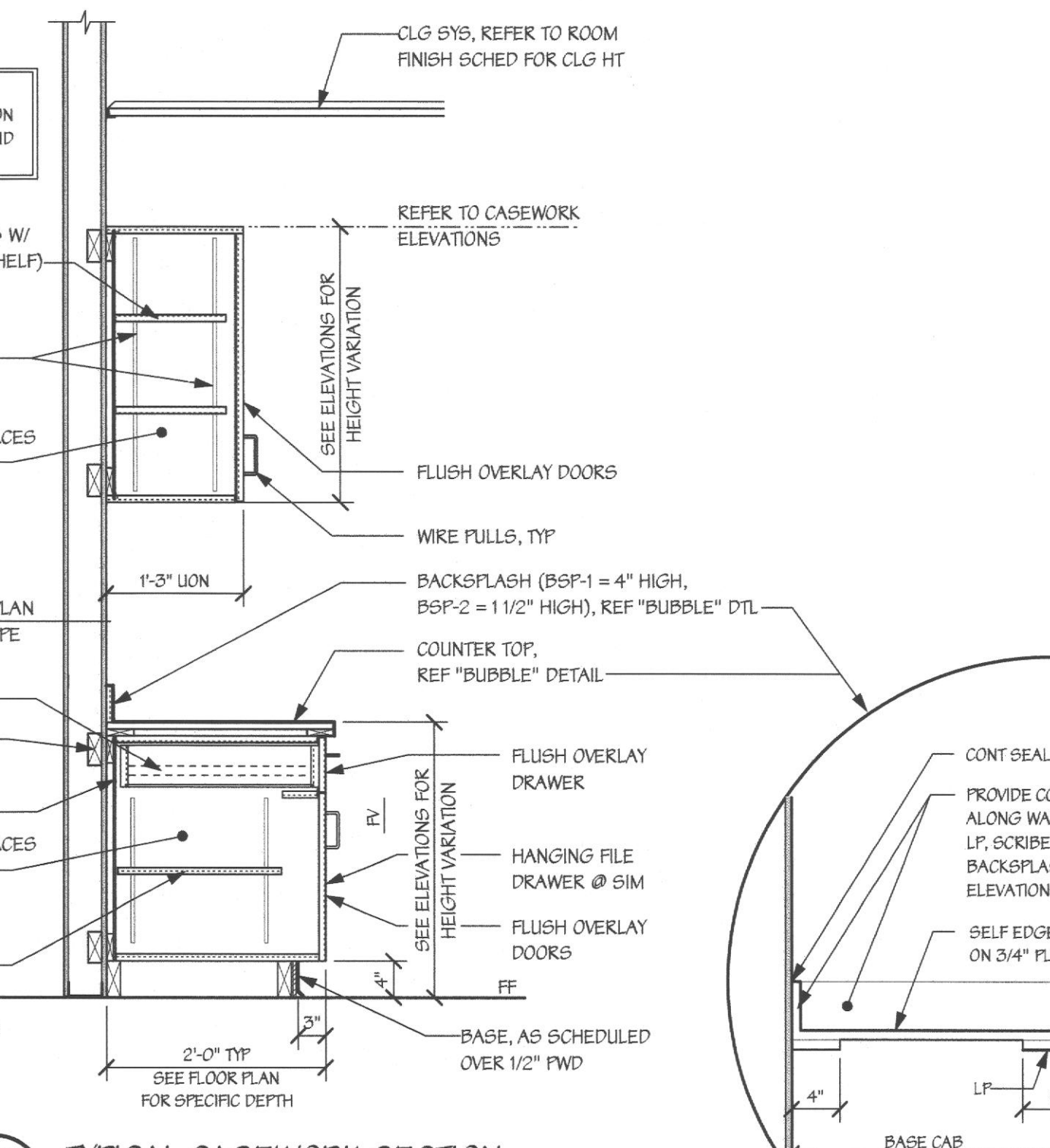


9C TYPICAL HC TOILET ROOM DETAILS
Scale: 3/8" = 1'-0"

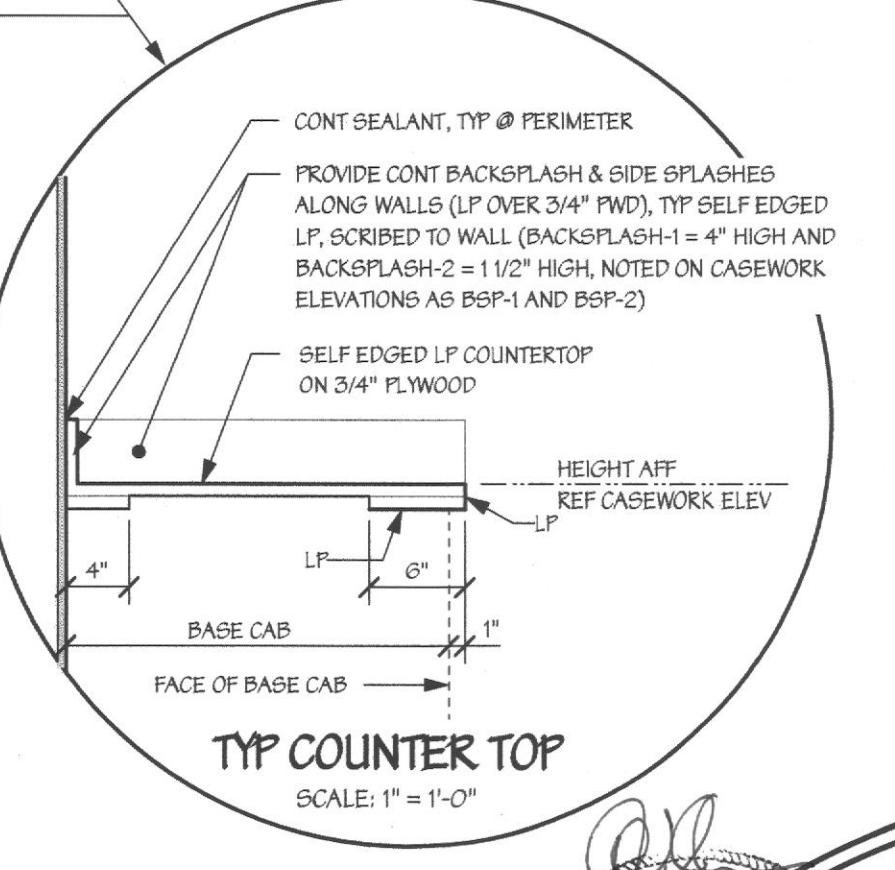
8E TYPICAL BULKHEAD DETAIL
Scale: 3/4" = 1'-0"



9E TYPICAL COUNTERTOP SUPPORT
Scale: 3/4" = 1'-0"

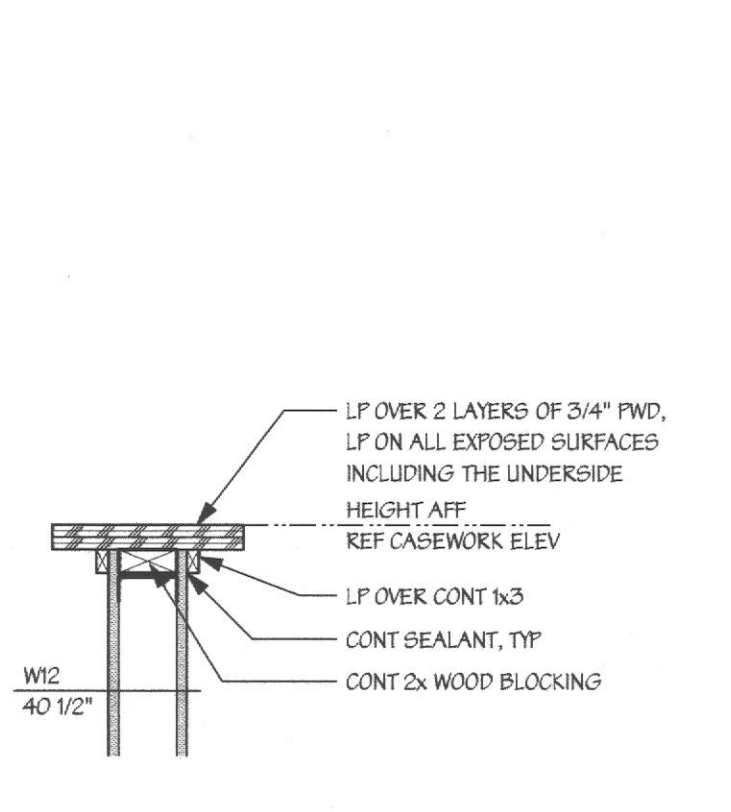


8F TYPICAL CASEWORK SECTION
Scale: 3/4" = 1'-0"



TYP COUNTERTOP TOP
Scale: 1" = 1'-0"

9F WRITING SURFACE
Scale: 1" = 1'-0"



STATE OF OHIO REGISTERED ARCHITECT
DAVID A. UDKOW
06276
6/1/2017

DETAILS

REV#	DATE	DESCRIPTION

ISSUED FOR BUILDING PERMIT

dpce
don penn consulting engineer

Lifeline Project Manager
In Syn c
1215 Old Ryeville Road
Office 410-452-5006
Fax 410-452-5046

David A. Udkow, Architect
11591 North 115th Way
Office 480-014-3395
Email - david@udkow.com

TENANT RENOVATIONS FOR:
LIFELINE Access Center
4505 Montgomery Rd.,
Cincinnati, OH 45212

DRAWING NO. AG
SHEET 01 OF 01
DATE 5/22/17
JOB NUMBER 11222
DRAWN BY
CHECKED BY

NOTE: CONTRACTOR AND SUB-CONTRACTORS SHALL VISIT THIS BUILDING AND TENANT AREA AND BE FAMILIAR WITH ALL THE EXISTING CONDITIONS PRIOR TO CONTRACT AWARD