

10200  
CINCINNATI  
OHIO

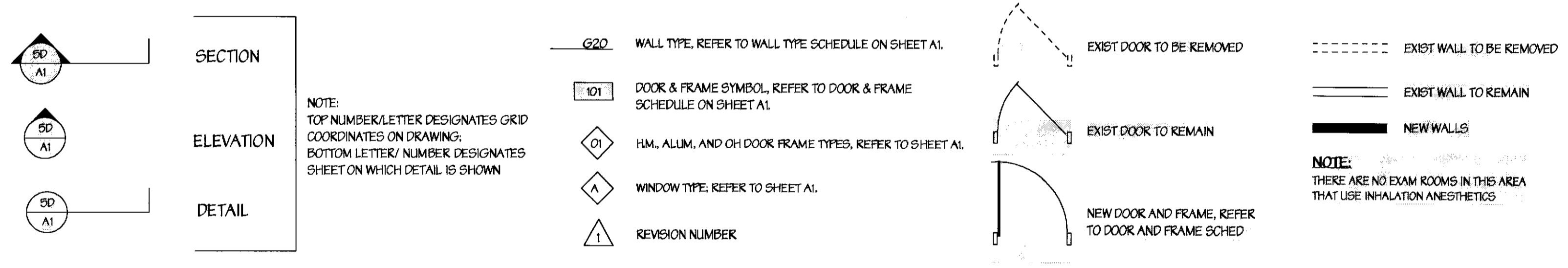
STANDARD ABBREVIATIONS

|                                       |             |                           |         |                         |             |
|---------------------------------------|-------------|---------------------------|---------|-------------------------|-------------|
| ABOVE                                 | ABV         | HANDICAP                  | HC      | SQUARE FOOT             | SQ FT or SF |
| ACoustic or ACoustical                | AC          | HEATING                   | HG      | SQUARE YARD             | SQ YD or SY |
| ACoustical CEILING TILE               | ACT         | HEATING/VENTING           | HVAC    | STAIN(ED)               | STN         |
| ADHESIVE                              | ADH         | HIGH AIR CONDITIONING     | HAC     | STAINLESS STEEL         | SS          |
| ADJUST or ADJUSTABLE                  | ADJ         | HIGH DUTY                 | HD      | STEEL                   | STL         |
| ALTERNATE                             | ALT         | HEIGHT                    | HT      | STORAGE                 | STOR        |
| ALUMINUM                              | ALUM        | HIGH                      | H       | STRUCTURAL              | STRUCT      |
| ANCHOR BOLT                           | AB          | HOLLOW CORE               | HC      | STRUCTURAL FINISH TILE  | SFT         |
| ANGLE                                 | ANG         | HOLLOW METAL              | HM      | SUSPEND (ED)            | SUSP        |
| ANCHOR (D)                            | AND         | HORIZONTAL                | HORIZ   | SYSTEM                  | SYS         |
| APPROXIMATE                           | APPROX      | HORIZONTAL CONTROL JOINT  | HCU     | TELEPHONE               | TEL         |
| ARCHITECT (LOCAL)                     | ARCH        |                           |         | TELEVISION              | TV          |
| AT                                    | @           | INCLUDE                   | INCL    | TERRAZZO                | TZ          |
| BEAM                                  | BM          | INSIDE DIAMETER           | ID      | THICK                   | THK         |
| BEARING                               | BEG         | INSULATION                | INSUL   | TOILET TISSUE DISPENSER | TTD         |
| BELOW                                 | BEL         | INTERMEDIATE              | INTER   | TOLERANCE               | TOL         |
| BELOW FINISHED FLOOR                  | BFF         | INTERIOR                  | INT     | TONGUE AND GROOVE       | T&G         |
| BIFURCIOUS                            | BIT         | INVERT                    | INV     | TOP OF STEEL            | TOS         |
| BLOCK                                 | BLK         | JANITORS CLOSET           | JAN     | TOP OF FOOTING          | TOF         |
| BLOCKING                              | BLKG        | JOINT                     | JNT     | TREAD                   | T           |
| BOARD                                 | BD          | JOIST                     | JST     | TREATED                 | TRD         |
| BOTTOM                                | BOT         | KITCHEN                   | KIT     | TRIPLE                  | TRP         |
| BOTTOM OF DECK                        | BOD         |                           |         | TURN DOWN SLAB          | TDS         |
| BOTTOM OF FOOTING                     | BOP         |                           |         | TYPICAL                 | TYP         |
| BUILDING                              | BLDG        | LAMINATE (D)              | LAM     | UNFINISHED              | UNF         |
| BUILT UP ROOF                         | BUR         | LAMINATED PLASTIC         | LP      | UNLESS OTHERWISE NOTED  | UN          |
| BULLHEAD                              | BLUH        | LAVATORY                  | LAV     |                         |             |
| CABINET                               | CAB         | LINEAR FEET               | LIN FT  |                         |             |
| CABINET (ED)                          | CPT         | LIQUID SOAP DISPENSER     | LSD     | VERTICAL                | VERT        |
| CABINET EDGE                          | CE          | LONG LENGTH               | LL      | VINYL BASE              | VB          |
| CAST IRON                             | CI          | LOUVER                    | LVR     | VERTICAL CONTROL JOINT  | VUJ         |
| CEILING                               | CLG         |                           |         | VINYL COMPOSITION TILE  | VCT         |
| CEMENT                                | CEM         | MANUFACTURER              | MFR     |                         |             |
| CENTER                                | CTR         | MASONRY                   | MAS     | WATER CLOSET            | WC          |
| CENTER LINE                           | CL          | MASONRY OPENING           | MO      | WATER HEATER            | WH          |
| CERAMIC TILE                          | CT          | MATERIAL                  | MATL    | WATER RESISTANT         | WR          |
| CHANNEL                               | CHAN        | MAXIMUM                   | MAX     | WATERPROOF (ING)        | WP          |
| CLEAR                                 | CLR         | MECHANICAL                | MECH    | WEIGHT                  | WT          |
| CLOSET                                | CLO         | METAL                     | MTL     | WELDED WIRE FABRIC      | WWF         |
| COLUMN                                | COL         | METAL THRESHOLD           | MT      | WIDE or WIDTH           | W           |
| CONCRETE                              | CONC        | MINIMUM                   | MIN     | WITH                    | W           |
| CONCRETE MASONRY UNIT                 | CMU         | MIRROR                    | MIR     | WITHOUT                 | WO          |
| CONSTRUCTION                          | CONSTR      | MISCELLANEOUS             | MISC    | WOOD                    | WD          |
| CONTINUOUS or CONTINUE                | CONT        | MODULAR                   | MOD     |                         |             |
| CONTROL JOINT                         | CJ          | MOF AND BRDM HOLDER       | MBH     |                         |             |
| CONCRETE GUARD                        | CG          | MOLDING                   | MLDG    |                         |             |
| CORNER                                | COR         | MOUNTED                   | MTD     |                         |             |
| COUNTER/SINK                          | CS          | NATURAL                   | NAT     |                         |             |
| COURSE                                | CRS         | NOMINAL                   | NOM     |                         |             |
| CUBIC                                 | CU          | NOT APPLICABLE            | NA      |                         |             |
| CUBIC FEET                            | CU FT or CF | NOT IN CONTRACT           | NIC     |                         |             |
| CUBIC YARD                            | CU YD or CY | NOT TO SCALE              | NTS     |                         |             |
| CYLINDER                              | CYL         | NUMBER                    | NO or # |                         |             |
| DEMOLITION or DEMOLISH                | DEMO        | ON CENTER                 | OC      |                         |             |
| DETAIL                                | DTL         | OPENING                   | OPNG    |                         |             |
| DEEP or DEPTH                         | D           | OPPOSITE                  | OPP     |                         |             |
| DIAMETER                              | DIA         | OUTSIDE DIAMETER          | OD      |                         |             |
| DIMENSION                             | DIM         | OVERALL                   | OA      |                         |             |
| DIRECT APPLIED EXTERIOR FINISH SYSTEM | DEFS        | OVERHEAD                  | OH      |                         |             |
| DIVISION                              | DIV         | PAINTED                   | PNT     |                         |             |
| DOOR                                  | DR          | PARK                      | PK      |                         |             |
| DOUBLE                                | DBL         | PARKER TOWEL DISPENSER    | PTD     |                         |             |
| DOWN                                  | DN          | PARALLEL                  | PAR     |                         |             |
| DOWNPOUT                              | DS          | PARTITION                 | PTN     |                         |             |
| DRAWING                               | DRWG        | PENETRULAR                | PNP     |                         |             |
| DRINKING FOUNTAIN                     | DF          | PLASTIC or PLASTER        | PLG     |                         |             |
| EACH                                  | EA          | PLATE                     | PL      |                         |             |
| EACH FACE                             | EAF         | PLUMB                     | PLMB    |                         |             |
| EACH WAY                              | EW          | POMER ASSOCIATED FASTENER | PAP     |                         |             |
| ELECTRIC or ELECTRICAL                | ELEC        | PREFINISHED               | PREFIN  |                         |             |
| ELECTRIC WATER COOLER                 | EWK         | PREFINISHED               | PREFIN  |                         |             |
| ELEVATION (GRADE)                     | EL          | PROPERTY LINE             | PL      |                         |             |
| ELEVATION (BUILDING)                  | ELEV        | QUARRY TILE               | QT      |                         |             |
| ENCLOSURE                             | ENCL        | RADIATOR or RADIUS        | RAD     |                         |             |
| ENTRANCE                              | ENTR        | RAIN LEADER               | RL      |                         |             |
| EQUAL                                 | EQ          | RECOMMENDATION            | RECOM   |                         |             |
| EQUIPMENT                             | EQUIP       | REFERENCE                 | REF     |                         |             |
| ESTIMATE                              | EST         | REINFORCER                | REFR    |                         |             |
| EXHAUST                               | EXH         | REINFORCE (ING) (ED)      | RENF    |                         |             |
| EXISTING                              | EXIST       | REINFORCED CONCRETE       | RC      |                         |             |
| EXISTING TO REMAIN                    | ETK         | REQUIRE                   | REQD    |                         |             |
| EXPANSION BOLT                        | EXP BT      | RESILIENT                 | RES     |                         |             |
| EXPANDED                              | EXP         | RETURN                    | RET     |                         |             |
| EXTERIOR                              | EXT         | REVERSE                   | REV     |                         |             |
| EXTERIOR INSULATION FINISH SYSTEM     | EIFS        | RISK                      | R       |                         |             |
| FASTEN (ER)                           | FAS         | ROOF DRAIN                | RD      |                         |             |
| FEET or FOOT                          | FT          | ROOFING                   | RFG     |                         |             |
| FEMININE WAPIN DISPOSAL               | FWD         | ROOM                      | RM      |                         |             |
| FELDER                                | FLD         | ROUGH OPENING             | RO      |                         |             |
| FINISH                                | FIN         | SANITARY NAPKIN DISPENSER | SND     |                         |             |
| FINISH FLOOR                          | FF          | SCHEDULE                  | SCHED   |                         |             |
| FIRE CODE                             | FC          | SECTION                   | SECT    |                         |             |
| FIRE EXTINGUISHER                     | FE          | SHIELD                    | SHTD    |                         |             |
| FIREPROOFING                          | FP          | SHEET                     | SHT     |                         |             |
| FLASHING                              | FLSH        | SIMILAR                   | SM      |                         |             |
| FLOOR                                 | FLR         | SOAP DISPENSER            | SD      |                         |             |
| FLUORESCENT                           | FLUC        | SOLID CORE                | SC      |                         |             |
| FOOTING                               | FTG         | SPECIAL                   | SPL     |                         |             |
| FOUNDATION                            | TON         | SPECIFICATION             | SPEC    |                         |             |
| FULL SIZE                             | FS          | SPLASH BLOCK              | SB      |                         |             |
| FURNISH                               | FURN        | SQUARE                    | SQ      |                         |             |
| FURNISHING                            | FURN        |                           |         |                         |             |
| GALVANIZED                            | GALV        |                           |         |                         |             |
| GALVANIZED IRON                       | GI          |                           |         |                         |             |
| GAUGE                                 | GA          |                           |         |                         |             |
| GLASS                                 | GL          |                           |         |                         |             |
| GRAB BAR                              | GB          |                           |         |                         |             |
| GRADE                                 | GD          |                           |         |                         |             |
| GYPSONUM                              | GYP         |                           |         |                         |             |
| GYPSONUM WALL BOARD                   | GWB         |                           |         |                         |             |

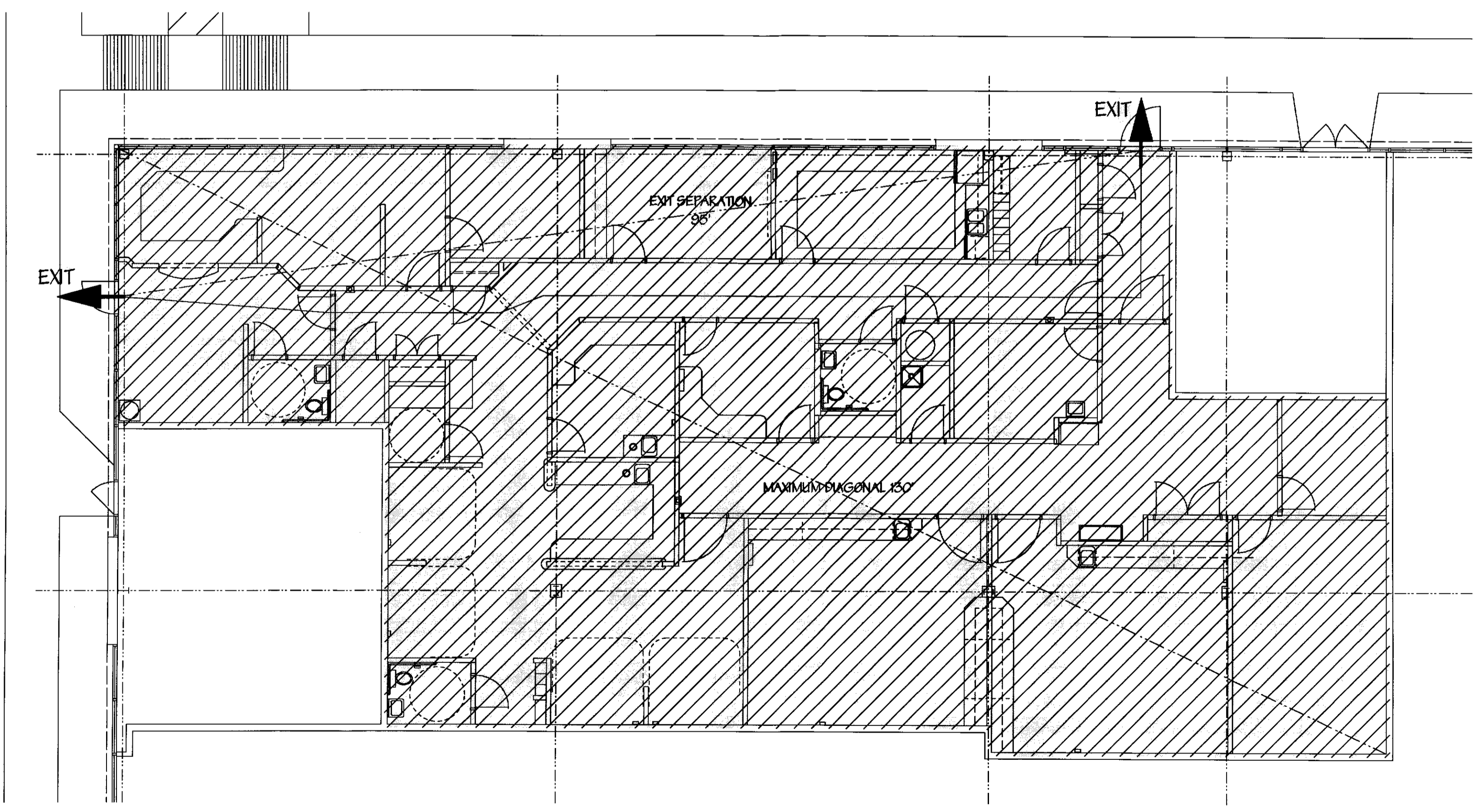
Tenant Renovations For:  
**RMS Life Line**  
4623 Wesley Avenue, Suite N  
Cincinnati, Ohio

| MECHANICAL/ELECTRICAL/PLUMBING   |  | ARCHITECTURAL   |   |
|--|--|---|---|
| <b>MECHANICAL / ELECTRICAL</b>   | <b>MEP CONSULTANT</b>  | <b>LOCAL ARCHITECT</b>  | <b>ARCHITECTURAL CONSULTANT</b>   |
| DON PENN CONSULTING ENGINEERS<br>3950 HIGHWAY 360, SUITE 101<br>GRAPEVINE, TEXAS 76051<br>(817) 410-2858 | JRL DESIGN CONSULTANTS, INC.<br>1901 N. FOUNTAIN GREEN ROAD<br>BEL AIR, MARYLAND, 21015-1411<br>(410) 893-2822 | ARCHITECTURAL REALMS<br>2935 MONTANA AVENUE, SUITE ONE<br>CINCINNATI, OHIO 45211-5933<br>513-662-3333 | FREDERICK WARD ASSOCIATES INC.<br>P.O. BOX 727, 5 SOUTH MAIN STREET<br>BEL AIR, MARYLAND 21014<br>(410) 879-2090 (410) 838-7900 |

ARCHITECTURAL SYMBOLS



EGRESS PLAN



GROUND FLOOR  
SCALE: 1/8" = 1'-0"

DRAWING INDEX:

- T1 TITLE SHEET
- A1 FLOOR PLAN AND SCHEDULES
- A2 CASEWORK AND DETAILS
- A3 REFLECTED CEILING PLAN, DEMOLITION PLAN AND DETAILS
- M1 HVAC EXIST/HVAC NEW WORK
- M2 PLUMBING PLANS/HVAC
- M3 MECHANICAL DETAILS
- M4 MECHANICAL SCHEDULES
- M5 MECHANICAL SPECIFICATIONS
- E1 ELECTRICAL SCHEDULES AND SYMBOLS
- E2 ELECTRICAL POWER AND LIGHTING PLAN
- E3 ELECTRICAL PANELS AND RISER DIAGRAM
- E4 ELECTRICAL SPECIFICATIONS

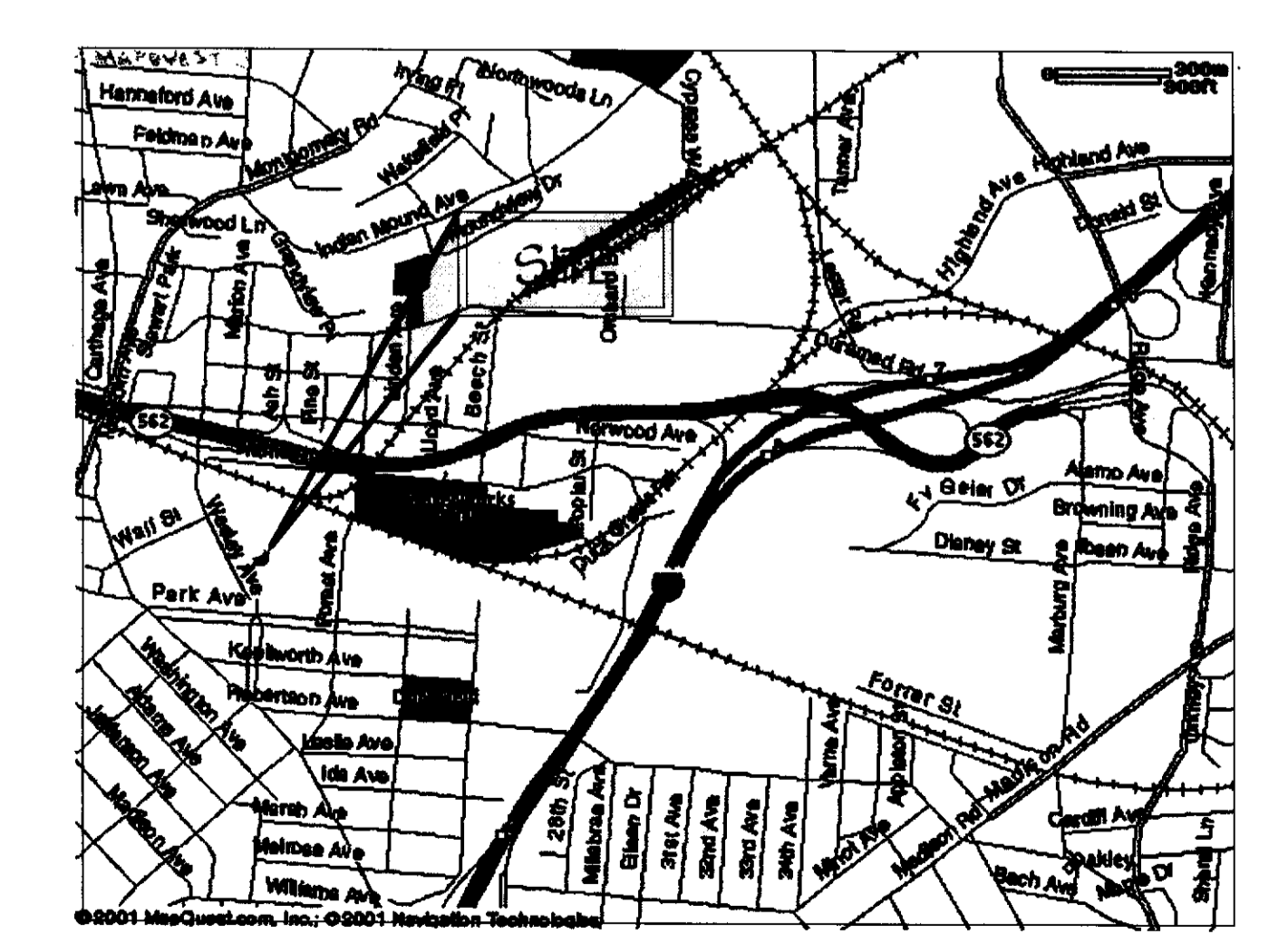
PROJECT INFORMATION

**1998 BOCA BUILDING CODE**

USE GROUP: "B" BUSINESS  
SPECIAL USE CLINIC (MAXIMUM 5 PATIENTS)

TENANT IMPROVEMENTS OF EXISTING BUILDING  
TOTAL AREA OF IMPROVEMENTS - 5240 SQUARE FEET  
TOTAL OCCUPANTS - @ 100 SF/OCCUPANT 53 OCCUPANTS  
REQUIRED MEANS OF EGRESS - 2  
EXITS PROVIDED - TWO  
EXIT REMOTENESS:  
DIAGONAL OF AREA SERVED: 130'  
REQUIRED SEPARATION OF EXITS: 44'  
ACTUAL SEPARATION OF EXITS: 95'

VICINITY MAP  
SCALE: NTS



REVISIONS

| REV# | DATE | DESCRIPTION |
|------|------|-------------|
|      |      |             |
|      |      |             |
|      |      |             |

**JRL**  
MECHANICAL & ELECTRICAL  
DESIGN CONSULTANTS, INC.  
1901 N. Fountain Green Road  
Bel Air, Md. 21015-1411  
410-893-2822 Fax: 410-893-0442  
jrdesign@starpower.net

**AR**  
ARCHITECTURAL REALMS  
Architecture • Planning  
2935 Montana Avenue  
Cincinnati, Ohio 45211  
Tel: 513-662-3333  
Fax: 513-662-6599

**FW**  
ENGINEERS ARCHITECTS SURVEYORS  
FREDERICK WARD ASSOCIATES, INC.  
P.O. Box 727, 5 South Main Street Bel Air, Maryland 21014-0727  
Phone: 410-879-2090 or 410-838-7900 Fax: 410-893-1243  
Columbia, Maryland Warrenton, Virginia

TENANT RENOVATIONS FOR:  
**RMS LIFE LINE**  
4623 Wesley Avenue, Suite N  
Cincinnati, Ohio

|                  |                            |
|------------------|----------------------------|
| DATE: 8/26/01    | DRAWING NO.:               |
| SCALE: AS NOTED  | 33                         |
| DESIGNED BY: KCP | SHEET:                     |
| DRAWN BY: DPK    | FWA JOB NUMBER: 2011216.00 |