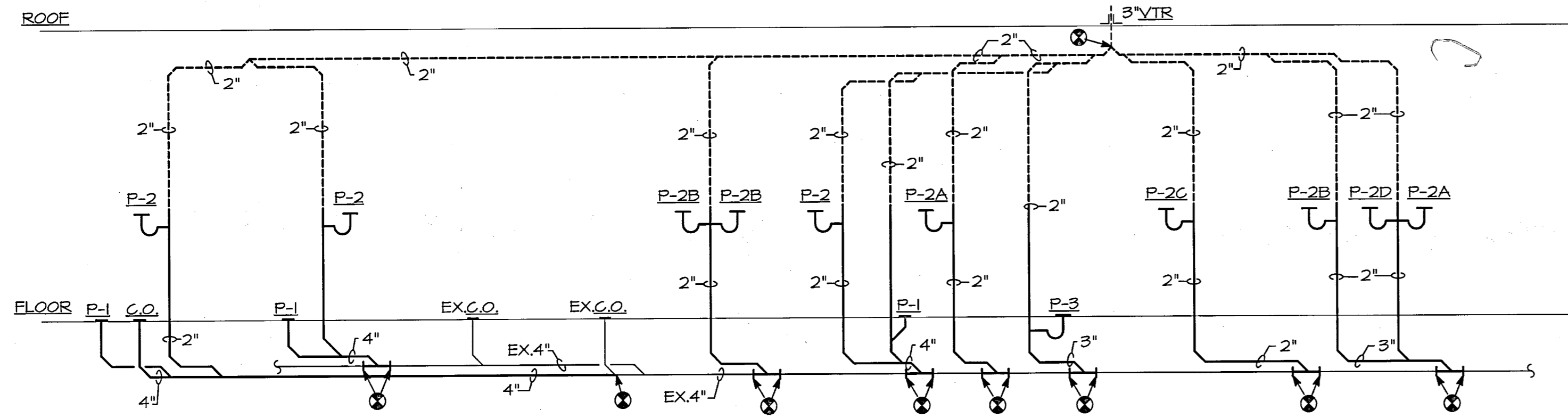
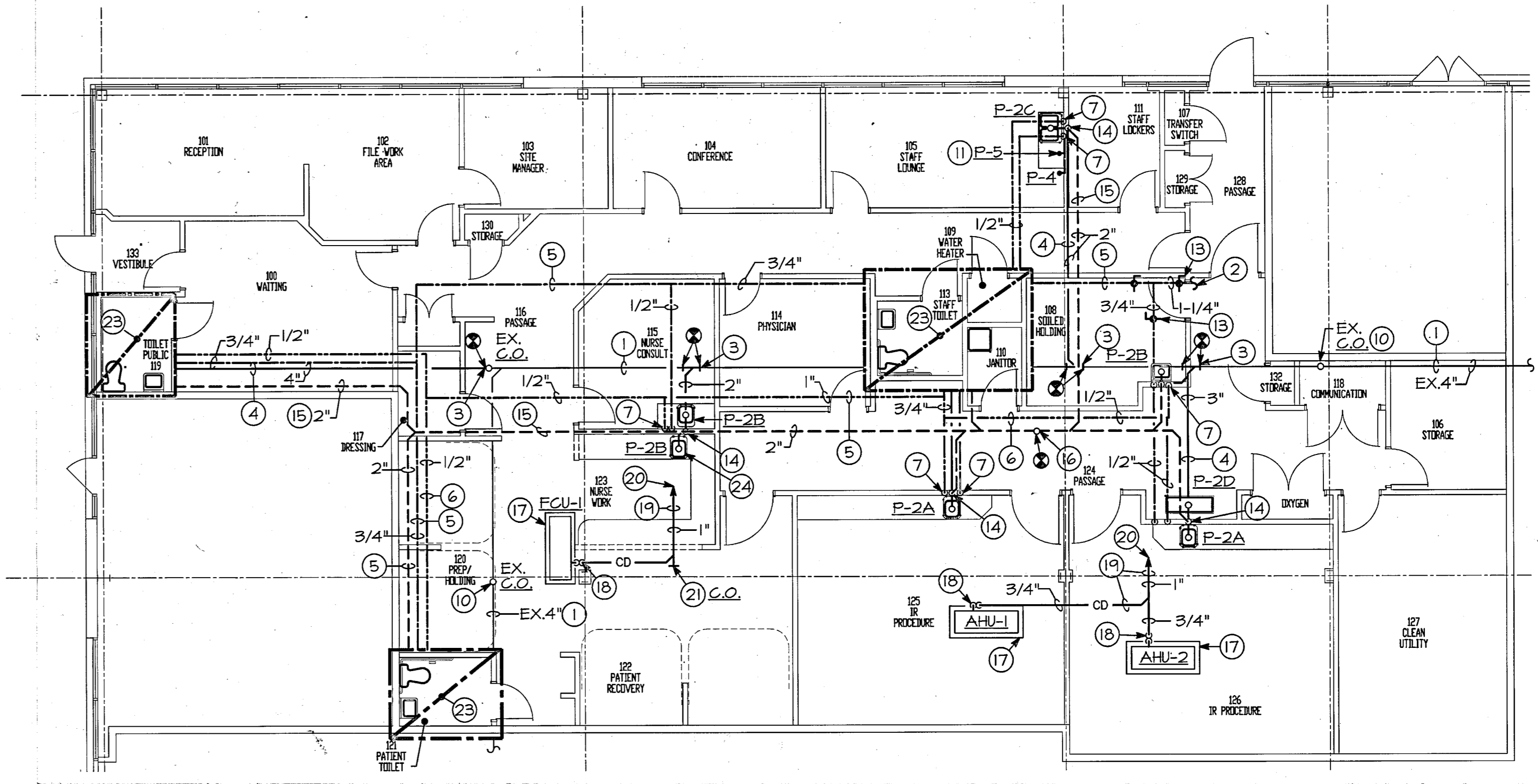


GENERAL NOTES

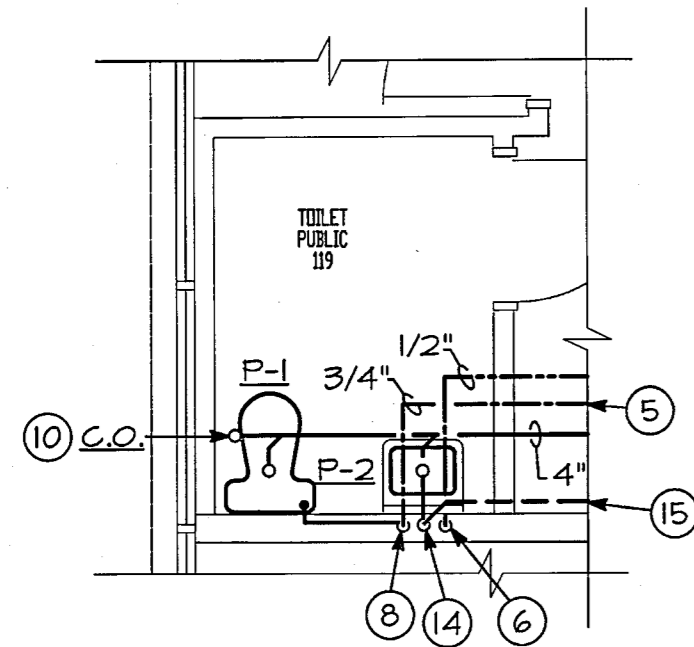
- 1) ALL ITEMS INDICATED BOLD SHALL BE CONSIDERED NEW UNLESS OTHERWISE NOTED.
- 2) ALL MANUFACTURES SHALL BE EQUAL TO THOSE INDICATED.
- 3) PVC PIPE WILL NOT BE PERMITTED ABOVE/WITHIN PLENUM CEILING.
- 4) PLUMBING ROUGH-IN CONNECTIONS ARE APPROXIMATE LOCATIONS. ALL ROUGH-IN CONNECTIONS TO BE COORDINATED IN THE FIELD BY THE PLUMBING CONTRACTOR.
- 5) MEDICAL GAS PIPE DESIGN DRAWINGS/INSTALLATION TO BE DONE BY A MEDICAL GAS TURNKEY COMPANY. PERMIT DRAWINGS FOR MEDICAL GAS BY OTHERS.
- 6) PLUMBING CONTRACTOR TO INSTALL SANITARY LINE BELOW SLAB TO ALLOW FOR 1/8" PER FOOT SLOPE. CONTRACTOR TO PROVIDE THE NECESSARY FITTINGS TO ACCOMMODATE THE 1/8" SLOPE BELOW SLAB.
- 7) CONTRACTOR TO FIELD VERIFY EXISTING GAS AND DOMESTIC WATER LINES SERVING THE REVISED TENANT SPACE AND COORDINATE/PROVIDE NEW GAS AND WATER (SUB) METERS AS REQUIRED.



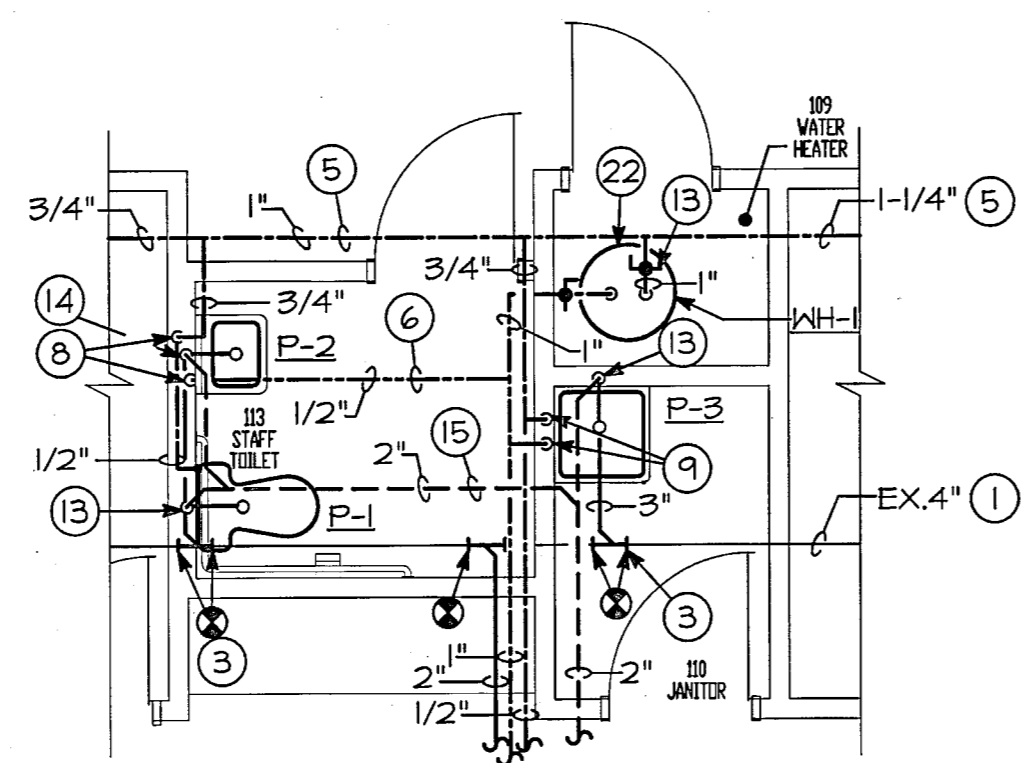
SANITARY RISER DIAGRAM
NO SCALE



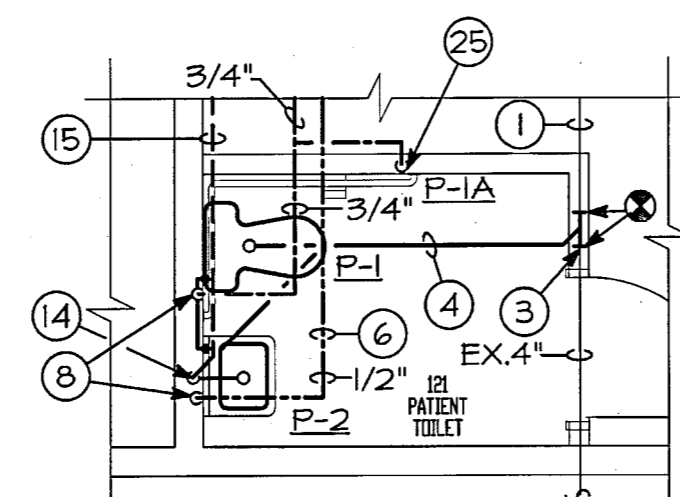
**FLOOR PLAN-EXISTING CONDITIONS/
NEW WORK (PLUMBING)**
SCALE: 1/8"=1'-0"



**FLOOR PART PLAN-
PLUMBING**
SCALE: 1/4"=1'-0"



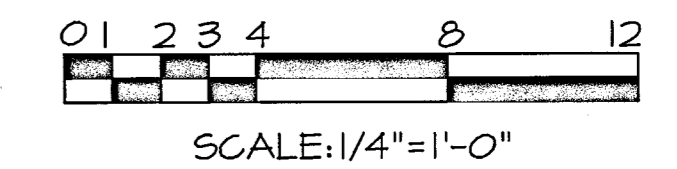
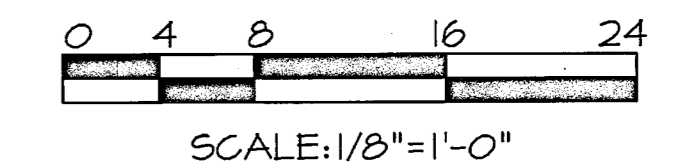
**FLOOR PART PLAN-
PLUMBING**
SCALE: 1/4"=1'-0"



**FLOOR PART PLAN-
PLUMBING**
SCALE: 1/4"=1'-0"

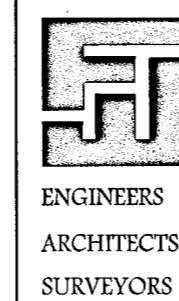
DRAWING NOTES

- 1) EXISTING SANITARY LINE BELOW SLAB TO REMAIN (TYPICAL). CONTRACTOR TO DETERMINE EXACT LOCATION OF EXISTING SANITARY SERVICE IN THE FIELD AND MAKE PROPER CONNECTION.
- 2) CONTRACTOR TO FIELD VERIFY/LOCATE EXISTING DOMESTIC WATER LINE ABOVE CEILING AND MAKE PROPER CONNECTION.
- 3) CONNECT NEW 4" SANITARY PIPE BELOW SLAB TO EXISTING 4" SANITARY AS INDICATED (TYPICAL).
- 4) SANITARY PIPE BELOW SLAB (TYPICAL).
- 5) DOMESTIC COLD WATER LINE SUPPORTED ABOVE CEILING (TYPICAL).
- 6) DOMESTIC HOT WATER LINE SUPPORTED ABOVE CEILING (TYPICAL).
- 7) 1/2" DOMESTIC HOT AND COLD WATER LINE DOWN IN WALL TO SERVE SINK (TYPICAL).
- 8) 3/4" DOMESTIC COLD WATER LINE DOWN IN WALL TO SERVE TOILET/HAND SINK AND 1/2" DOMESTIC HOT WATER LINE DOWN TO SERVE HAND SINK.
- 9) 3/4" DOMESTIC HOT AND COLD WATER LINE DOWN IN WALL TO JANITOR'S SINK (TYPICAL).
- 10) EXISTING/NEW FLOOR CLEANOUT TO REMAIN (TYPICAL).
- 11) 1/4" DOMESTIC COLD WATER LINE ROUTED WITHIN WALL TO SERVE P-4 AND P-5. COORDINATE EXACT LOCATION IN THE FIELD.
- 12) BALL VALVE (TYPICAL).
- 13) 2" SANITARY VENT LINE UP AND 3" TO SANITARY LINE DOWN (TYPICAL).
- 14) 2" SANITARY VENT LINE UP AND 2" TO SANITARY LINE DOWN (TYPICAL).
- 15) SANITARY VENT LINE SUPPORTED ABOVE CEILING (TYPICAL).
- 16) CONTRACTOR TO FIELD VERIFY/LOCATE EXISTING 3" SANITARY VENT THROUGH ROOF AND CONNECT 2" SANITARY VENT LINE ABOVE CEILING AS INDICATED.
- 17) OUTLINE OF FAN COIL/AIR HANDLING UNIT. REFER TO SHEET M-1 FOR MORE INFORMATION.
- 18) PROVIDE 3" DEEP TRAP AT CONDENSATE PIPE AT UNIT.
- 19) CONDENSATE PIPE SUPPORTED ABOVE CEILING.
- 20) CONTRACTOR TO FIELD VERIFY/LOCATE AND ROUTE 1" CONDENSATE LINE DOWN WITHIN WALL FROM ABOVE CEILING AND CONNECT TO TAILPIECE OF SINK.
- 21) CONDENSATE PIPE CLEANOUT ABOVE CEILING.
- 22) 82 GALLON ELECTRIC WATER HEATER MOUNTED ON FLOOR. REFER TO DETAIL ON SHEET M-3 FOR PIPING AND MOUNTING DETAIL. ALSO REFER TO SHEET M-4 FOR SIZE AND CAPACITY.
- 23) REFER TO PART PLAN THIS SHEET FOR CONTINUATION OF WORK.
- 24) 1/2" DOMESTIC HOT AND COLD WATER LINE DOWN IN WALL TO SERVE P-2B NURSE WORK SINK. INSTALL A TempControl THERMOSTATIC TEMPERATURE CONTROLLER BELOW COUNTERTOP AS MANUFACTURED BY SYMMONS, MODEL#5-200-W. LEAVING WATER TEMPERATURE NOT TO EXCEED 175°F.
- 25) 1/2" DOMESTIC COLD WATER LINE DOWN IN WALL TO SERVE P-1A.



REV#	DATE	REVISION DESCRIPTION

dp
DON PENN CONSULTING ENGINEERS
3950 HIGHWAY 360, SUITE 101
GRAPEVINE, TEXAS 76051
817-410-2855 FAX 817-251-8411



FREDRICK WARD ASSOCIATES, INC.
P.O. Box 727, 5 South Main Street Bel Air, Maryland 21014-0727
Phone: 410-879-2090 or 410-835-7900 Fax: 410-893-1243
Columbia, Maryland Warrenton, Virginia

TENANT RENOVATIONS FOR:
RMS LIFE LINE
WALL STREET AND WESLEY AVENUE
NORWOOD, OHIO

DATE 4/26/01	DRAWING NO. M2
SCALE AS NOTED	SHEET # 7 5
DESIGNED BY DLI	2011215.00
DRAWN BY DLI	JLR# 1-100b