

STANDARD ABBREVIATIONS

ABOVE	ABV	HANDICAP	HC	SQUARE FOOT	SG FT or SF
ABOVE FINISH FLOOR	AFF	HARDWARE	HW	SQUARE YARD	SG YD or SY
ACOUSTIC or ACOUSTICAL	AC	HEATING	HTG	STAIN(ED)	STN
ACOUSTICAL CEILING TILE	ACT	HEATING/VENTING	HWAC	STAINLESS STEEL	SS
ADHESIVE	ADH	and AIR CONDITIONING	HD	STANDARD	STD
ADJUST or ADJUSTABLE	ADJ	HEAVY DUTY	HT	STEEL	STL
ALTERNATE	ALT	HIGH	H	STORAGE	STOK
ALUMINUM	ALUM	HOLLOW CORE	HC	STRUCTURAL	STRUCT
ANCHOR BOLT	AB	HOLLOW CORE	HC	STRUCTURAL FACING TILE	SFT
ANGLE	ANG	HORIZONTAL	HORIZ	SUSPEND (ED)	SUSP
ANGLE (ED)	ANGD	HORIZONTAL CONTROL JOINT	HCGJ	SYSTEM	SYS
APPROXIMATE	APPROX	INCLUDE	INCL	TELEPHONE	TEL
ARCHITECT (LOCAL)	ARCH	INSIDE DIAMETER	ID	TELEVISION	TV
ARCH	#	INSULATION	INSUL	TERRAZZO	TZ
BEAM	BM	INTERMEDIATE	INTK	THICK	THK
BEARING	BRS	INTERIOR	INT	TOILET TISSUE DISPENSER	TTD
BELOW	BEL	INVERT	INVT	TOLERANCE	TOL
BELOW FINISHED FLOOR	BFF	JANITORS CLOSET	JAN	TONGUE AND GROOVE	T&G
BITUMINOUS	BIT	JOINT	JT	TOP OF STEEL	TOS
BLOCK	BLK	JOIST	JST	TOP OF FOOTING	TOF
BLOCKING	BLKG	KITCHEN	KIT	TREAD	T
BOARD	BD	LAMINATE (ED)	LAM	TREATED	TRD
BOTTOM	BOT	LAMINATED PLASTIC	LPL	TRIPLE	TR
BOTTOM OF DECK	BOD	LAWATORY	LAV	TURN DOWN SLAB	TDS
BOTTOM OF FOOTING	BOF	LIGHT	LV	TYPICAL	TYP
BUILDING	BLDG	LINER FEET	LIN FT	UNFINISHED	UNF
BUILDING SCOP	BLDG SCOP	LIQUID SOAP DISPENSER	LSD	UNLESS OTHERWISE NOTED	UNO
BULKHEAD	BLKHD	LONG or LENGTH	LWR	NOTE	
CABINET	CAB	LOUVER	LVR	VERTICAL	VERT
CARPET (ED)	CPT	MANUFACTURER	MFR	VINTL BASE	VBS
CARPET EDGE	CE	MASONRY	MWS	VERTICAL CONTROL JOINT	VCLJ
CASE	CS	MASONRY OPENING	MO	VINYL COMPOSITION TILE	VCT
CASE IRON	CI	MATERIAL	MATL	WATER CLOSET	WC
CEILING	CLG	MAXIMUM	MAX	WATER HEATER	WH
CEMENT	CEM	MECHANICAL	MCH	WATER RESISTANT	WR
CENTER LINE	CTR	METAL	MTL	WATERPROOF (ING)	WP
CENTER LINE	CL	METAL THRESHOLD	MT	WEIGHT	WT
CERAMIC TILE	CT	MINIMUM	MIN	WELDED WIRE FABRIC	WWF
CHANNEL	CHAN	MISCELLANEOUS	MISC	WIDE or WIDTH	W
CLARK	CLR	MODULAR	MOD	WITH	WI
CLOSET	CLO	MOLD AND ROOM HOLDER	MHR	WITHOUT	W/O
COLUMN	COL	MOLDING	MOLD	WOOD	WD
COMBINATION	COMB	MOUNTED	MNTD	YARD	YD
CONCRETE	CONC	NATURAL	NAT		
CONCRETE MASONRY UNIT	CMU	NOMINAL	NOM		
CONSTRUCTION	CONSTR	NOT APPLICABLE	NA		
CONTINUOUS or CONTINUE	CONT	NOT IN CONTRACT	NIC		
CONTROL JOINT	CJ	NOT TO SCALE	NTS		
CORNER GUARD	CG	NUMBER	NO or #		
CORNER	CKR	ON CENTER	OC		
COUNTER SINK	CS	OPENING	OPNG		
COURSE	CRS	OPPOSITE	OPF		
CUBIC	CU	OVERALL	OA		
CUBIC FEET	CU FT or CF	OVERHEAD	OH		
CUBIC YARD	CU YD or CY	PAINTED	PNT		
CYLINDER	CYL	PAIR	PR		
DEMOLITION or DEMOLISH	DEMO	PAPER TOWEL DISPENSER	PTD		
DETAIL	DTL	PARALLEL	PK		
DEPT or DEPTH	D	PARTITION	PTN		
DIAMETER	DA	PERPENDICULAR	PERP		
DIMENSION	DM	PLASTIC or PLASTER	PLAS		
DIRECT APPLIED EXTERIOR FINISH SYSTEM	DPAFS	PLATE	PLT		
DOWN	DN	FLUORESCENT	FLUOR		
DOWNSPOUT	DS	PREFABRICATED	PRE-FAB		
DRAWING	DRWG	PRE-FINISHED	PRE-FIN		
DRINKING FOUNTAIN	DF	PROPERTY LINE	PL		
EACH	EA	QUARRY TILE	GT		
EACH FACE	EF	RADIATOR or RADIUS	RAD		
EACH WAY	EW	RAIN LEADER	RL		
ELECTRIC or ELECTRICAL	ELEC	RECOMMENDATION	RECOM		
ELECTRIC WATER COOLER	EWC	REFERENCE	REF		
ELEVATION (GRADE)	EL	REFRIGERATOR	REFR		
ELEVATION (BUILDING)	ELEV	REINFORCE (ING) (ED)	REINF		
ENCLOSURE	ENCL	REINFORCED CONCRETE	RC		
ENTRANCE	ENTR	REQUIRE	REQD		
EQUAL	EQ	RESILIENT	RES		
EQUIPMENT	EQUIP	RETURN	RET		
ESTIMATE	EST	REVERSE	REV		
EXHAUST	EXH	REVERSE	REV		
EXISTING	EXIST	ROOF DRAIN	RD		
EXISTING TO REMAIN	ETR	ROOFING	RFG		
EXPANSION JOINT	EXP JT	ROOM	RM		
EXPANDED	EXP	ROUGH OPENING	RO		
EXTERIOR	EXT	SANITARY NAPKIN DISPENSER	SND		
EXTERIOR INSULATION FINISH SYSTEM	EIFS	SCHEDULE	SCHED		
FAS (FIX)	FAS	SECTION	SECT		
FEET or FOOT	FT	SHEATHING	SHGT		
FEMININE NAPKIN DISPENSER	FND	SHEET	SH		
FIELD VERIFY	FV	SIMILAR	SIM		
FINISH	FIN	SOAP DISPENSER	SD		
FINISH FLOOR	FF	SOLID CORE	SC		
FIRE CODE	FC	SPECIAL	SPL		
FIRE EXTINGUISHER	FE	SPECIFICATION	SPEC		
FIREPROOFING	FP	SPLASH BLOCK	SPB		
FLASHING	FLASH	SQUARE	SQ		
FLOOR	FLR				
FLUORESCENT	FLUOR				
FOOTING	FTG				
FOUNDATION	FN				
FULL SIZE	FS				
FURNISH	FURN				
FURRING	FLR				
GALVANIZED	GALV				
GALVANIZED IRON	GI				
GALVANIZED STEEL	GS				
GLASS	GL				
GRAB BAR	GB				
GRADE	GD				
GYPDRUM	GYP				
GYPDRUM WALL BOARD	GWB				

REV#	DATE	DESCRIPTION

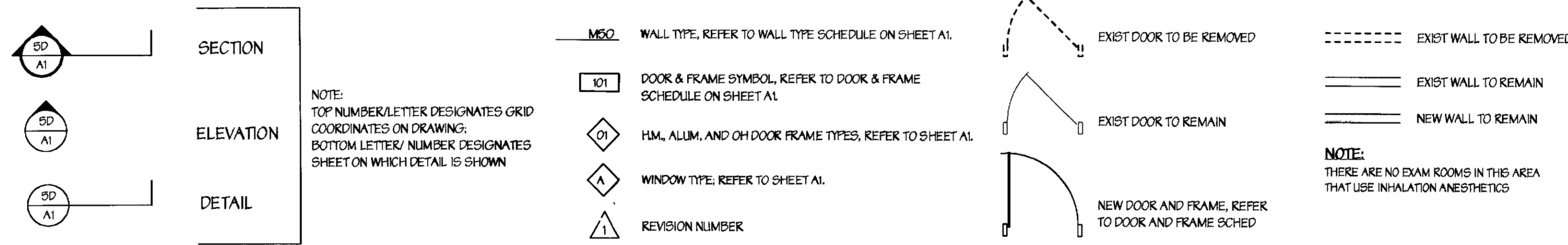
Tenant Renovations For:
RMS Life Line
4100 Latham Street, Suite A
Riverside, California

MECHANICAL/ELECTRICAL/PLUMBING
MECHANICAL / ELECTRICAL
DON PENN CONSULTING ENGINEERS
3950 HIGHWAY 260, SUITE 101
GRAPEVINE, TEXAS 76051
(817) 410-2555

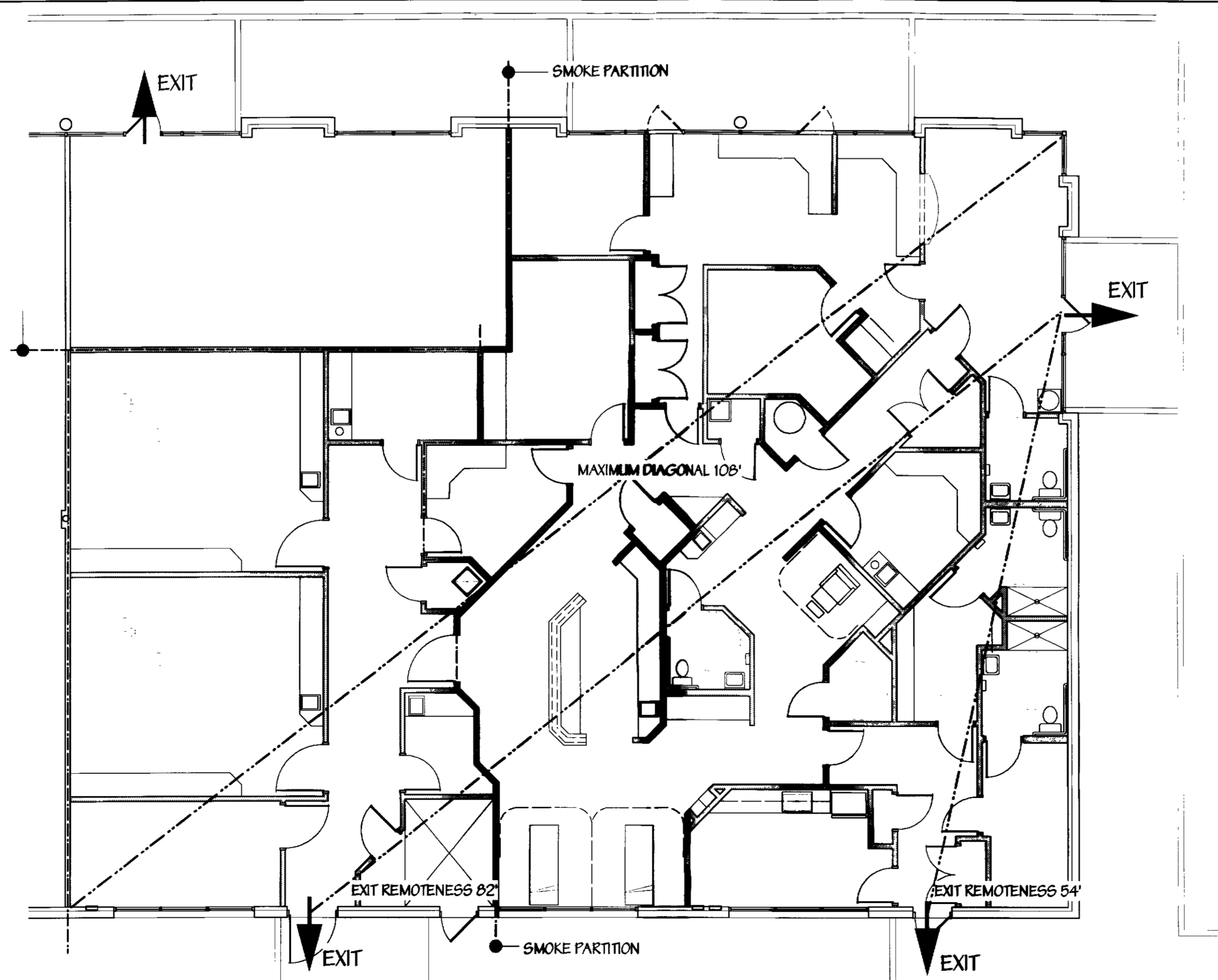
ARCHITECTURAL
LOCAL ARCHITECT
COLE AND FRICK ASSOCIATES INC.
4195 CHESTNUT STREET
RIVERSIDE, CALIFORNIA 92501
(909) 684-4011

ARCHITECTURAL CONSULTANT
FREDERICK WARD ASSOCIATES INC.
P.O. BOX 727, 5 SOUTH MAIN STREET
BEL AIR, MARYLAND 21014
(410) 879-2090 (410) 838-7900

ARCHITECTURAL SYMBOLS



EGRESS PLAN



GROUND FLOOR
SCALE: 1/8" = 1'-0"

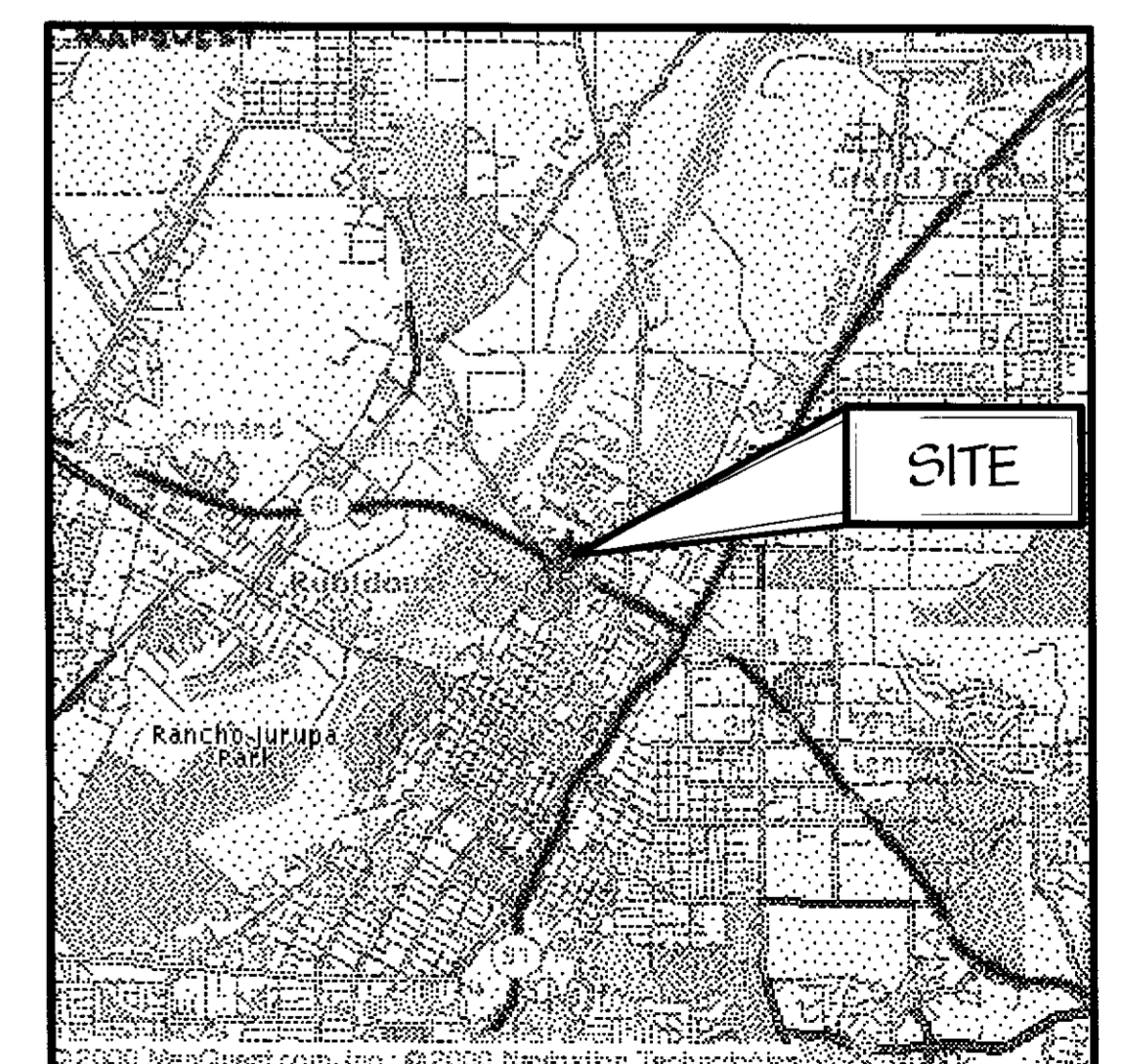
DRAWING INDEX:

- T1 TITLE SHEET
- A1 FLOOR PLAN AND SCHEDULES
- A2 CASEWORK AND DETAILS
- A3 REFLECTED CEILING PLAN, DEMOLITION PLAN AND DETAILS
- M1 HVAC EXIST/HVAC NEW WORK
- M2 PLUMBING PLANS/HVAC
- M3 MECHANICAL DETAILS
- M4 MECHANICAL SCHEDULES
- M5 MECHANICAL SPECIFICATIONS
- E1 ELECTRICAL SCHEDULES AND SYMBOLS
- E2 ELECTRICAL POWER AND LIGHTING PLAN
- E3 ELECTRICAL PANELS AND RISER DIAGRAM
- E4 ELECTRICAL SPECIFICATIONS

PROJECT INFORMATION

1998 CALIFORNIA BUILDING CODE
 USE GROUP: "B" BUSINESS
 SPECIAL USE CLINIC (MAXIMUM 5 PATIENTS)
 TENANT IMPROVEMENTS OF EXISTING BUILDING
 TOTAL AREA OF IMPROVEMENTS - 5121 SQUARE FEET
 TOTAL OCCUPANTS - @ 100 SF/OCCUPANT 52 OCCUPANTS
 REQUIRED MEANS OF EGRESS - 2
 EXITS PROVIDED - THREE
 EXIT REMOTENESS:
 DIAGONAL OF AREA SERVED: 108'
 REQUIRED SEPARATION OF EXITS: 54'
 ACTUAL SEPARATION OF EXITS: 82'
 VACANT TENANT AREA - 716 SQUARE FEET
 TOTAL OCCUPANTS - @ 100 SF/OCCUPANT (PRESUMED OFFICE USE) 8 OCCUPANTS
 REQUIRED MEANS OF EGRESS - 1
 EXITS PROVIDED - ONE

VICINITY MAP



Cole & Frick
Architects, A.I.A.

4195 Chestnut Street
Riverside, California
92501 909/684-4011

FREDERICK WARD ASSOCIATES, INC.
ENGINEERS
ARCHITECTS
SURVEYORS

P.O. Box 727, 5 South Main Street Bel Air, Maryland 21014-0727
Phone: 410-879-2090 or 410-838-7900 Fax: 410-899-1243
Columbia, Maryland Warrenton, Virginia

TENANT RENOVATIONS FOR:
RMS LIFE LINE
4100 LATHAM STREET, SUITE A
RIVERSIDE, CALIFORNIA

DATE: 01/11/12
SCALE: AS NOTED
DESIGNED BY: KCP
DRAWN BY: DPR
DATE: 12/15/11

10206
RIVERSIDE CA
RIVERSIDE