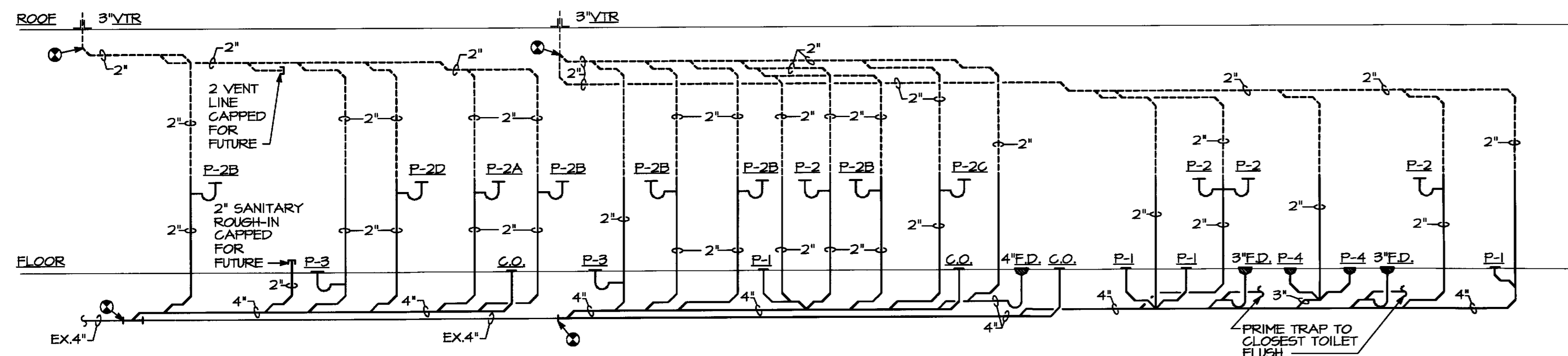
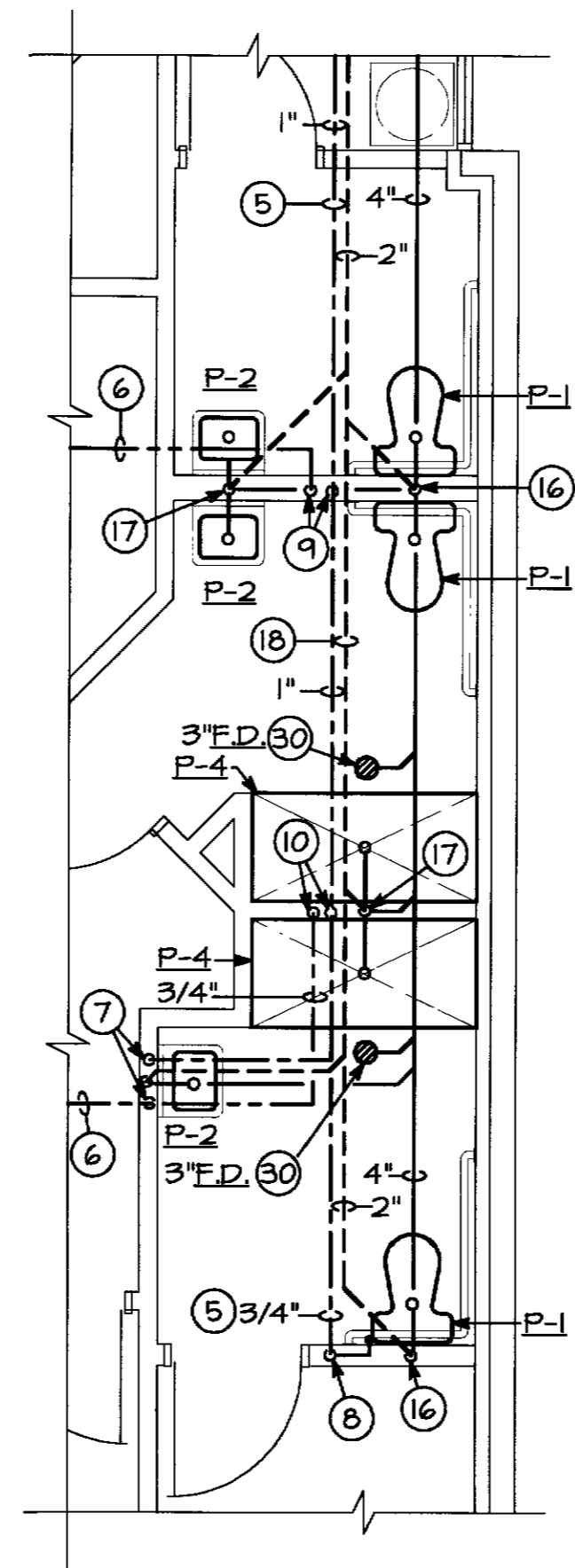


GENERAL NOTES

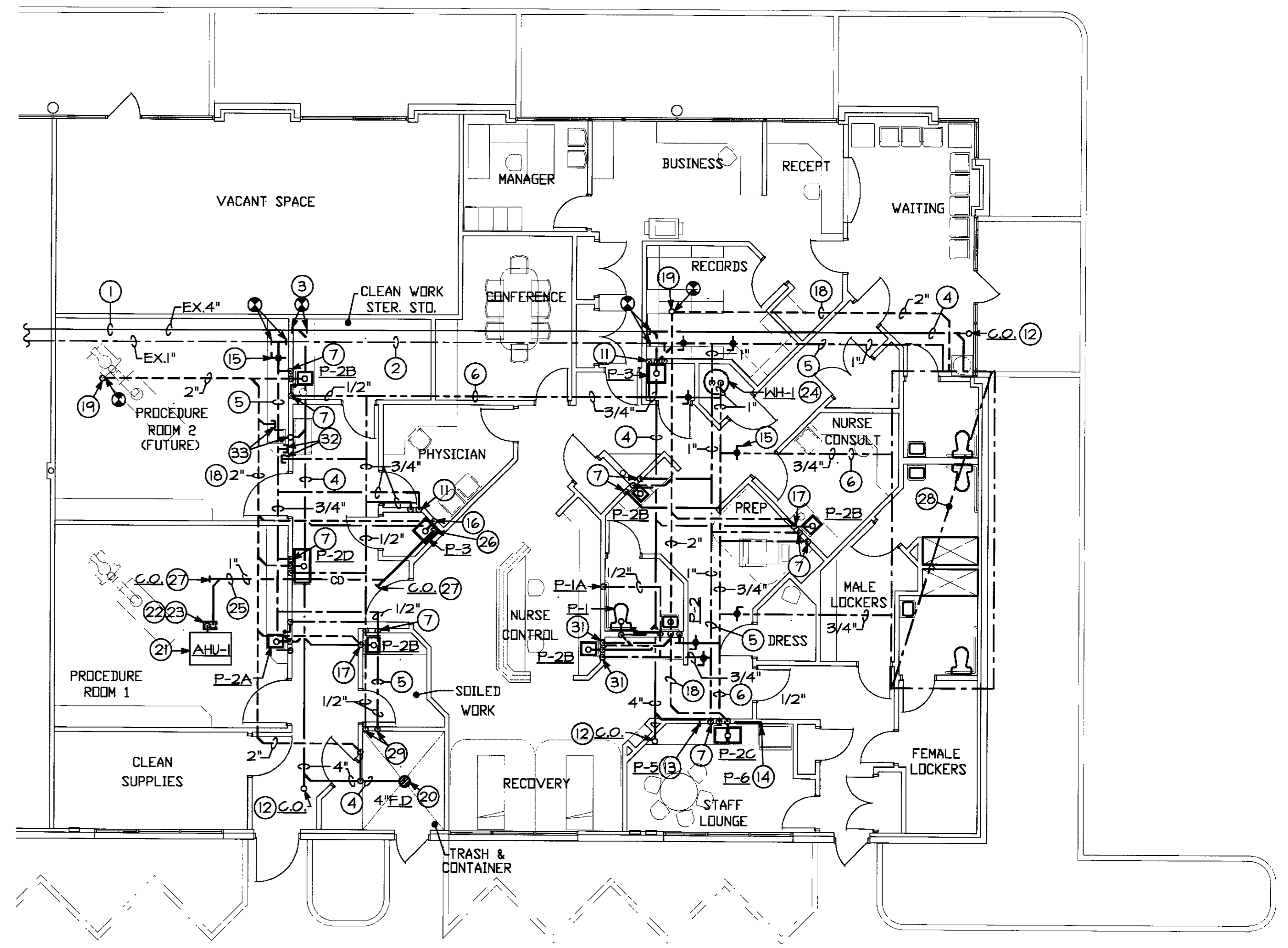
- 1) ALL ITEMS INDICATED BOLD SHALL BE CONSIDERED NEW UNLESS OTHERWISE NOTED.
- 2) ANY ITEM NOT BEING REUSED SHALL BE TURNED OVER TO A BUILDING COORDINATOR FOR BUILDING STOCKPILE.
- 3) ALL MANUFACTURES SHALL BE EQUAL TO THOSE INDICATED.
- 4) CONTRACTOR TO REMOVE ALL PLUMBING FIXTURES AND ASSOCIATED PIPING NOT SHOWN ON DEMOLITION PLAN BACK TO PIPE MAINS AND CAP AT SLAB AND/OR ABOVE CEILING.
- 5) CONTRACTOR TO REMOVE ALL EXISTING FLOOR MOUNTED ELECTRIC WATER HEATERS AND TURN OVER TO A BUILDING REPRESENTATIVE/OWNER FOR THEIR STOCKPILE.
- 6) CONTRACTOR TO FIELD VERIFY AND REMOVE EXISTING ALL PLUMBING FIXTURES WITHIN NEW TENANT WORK AREA AND TURN OVER TO THE BUILDING REPRESENTATIVE/OWNER.
- 7) CONTRACTOR TO FIELD VERIFY/LOCATE ALL EXISTING COLD/HOT WATER LINES ASSOCIATED WITH PLUMBING FIXTURES AND/OR ELECTRIC WATER HEATERS AND CAP OFF IN CEILING ALONG WITH SANITARY VENT LINE. ALSO REMOVE SANITARY LINE DOWN TO AND CAP BELOW SLAB.
- 8) PLUMBING ROUGH-IN CONNECTIONS ARE APPROXIMATE LOCATIONS. ALL ROUGH-IN CONNECTIONS TO BE COORDINATED IN THE FIELD BY THE PLUMBING CONTRACTOR.
- 9) MEDICAL GAS PIPE DESIGN DRAWINGS/INSTALLATION TO BE DONE BY A MEDICAL GAS TURNKEY COMPANY. PERMIT DRAWINGS FOR MEDICAL GAS BY OTHERS.
- 10) PLUMBING CONTRACTOR TO INSTALL SANITARY LINE BELOW SLAB TO ALLOW FOR 1/8" PER FOOT SLOPE. CONTRACTOR TO PROVIDE THE NECESSARY FITTINGS TO ACCOMMODATE THE 1/8" SLOPE BELOW SLAB.



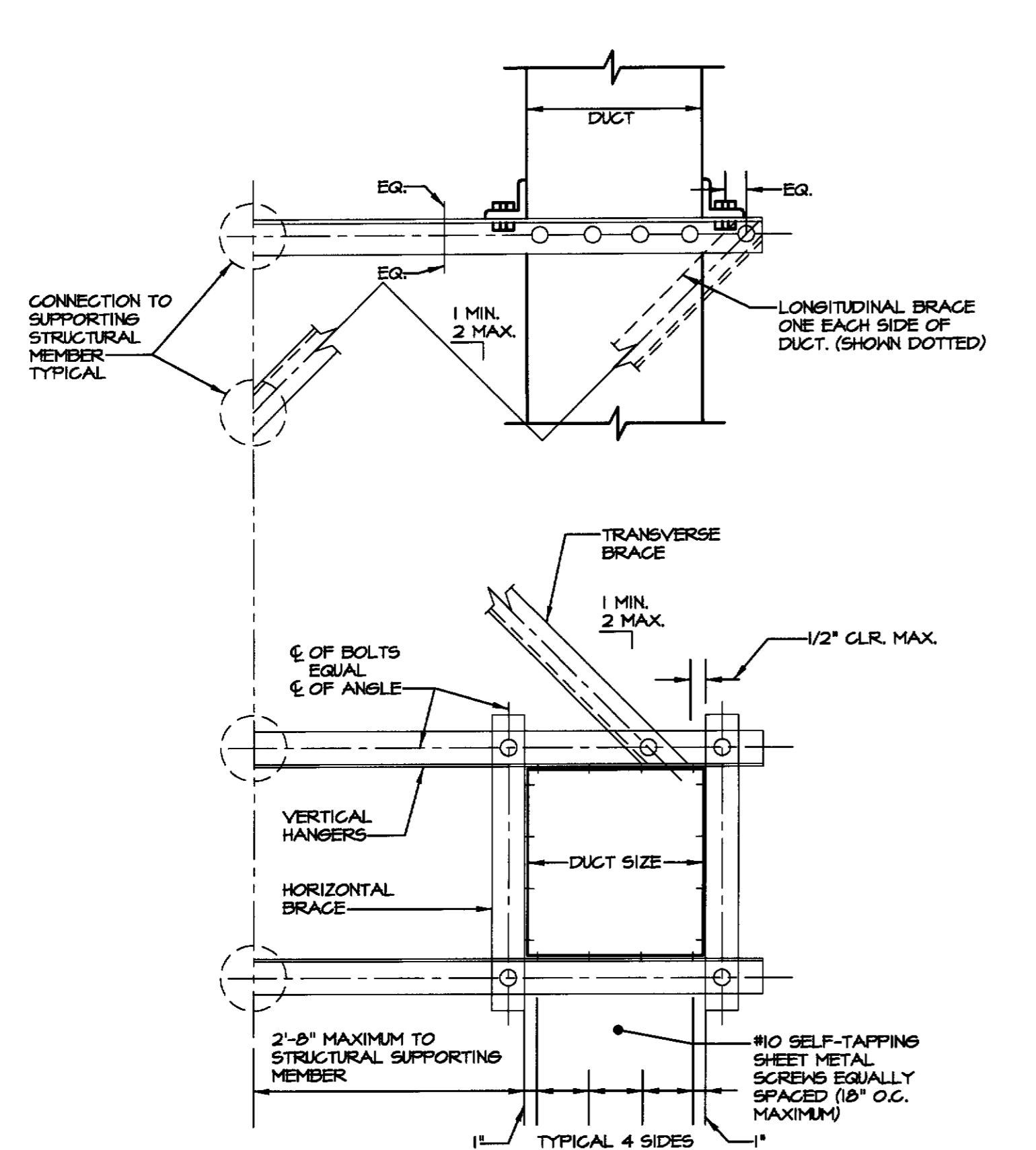
SANITARY RISER DIAGRAM
NO SCALE



FLOOR PART PLAN- PLUMBING
SCALE: 1/4"=1'-0"

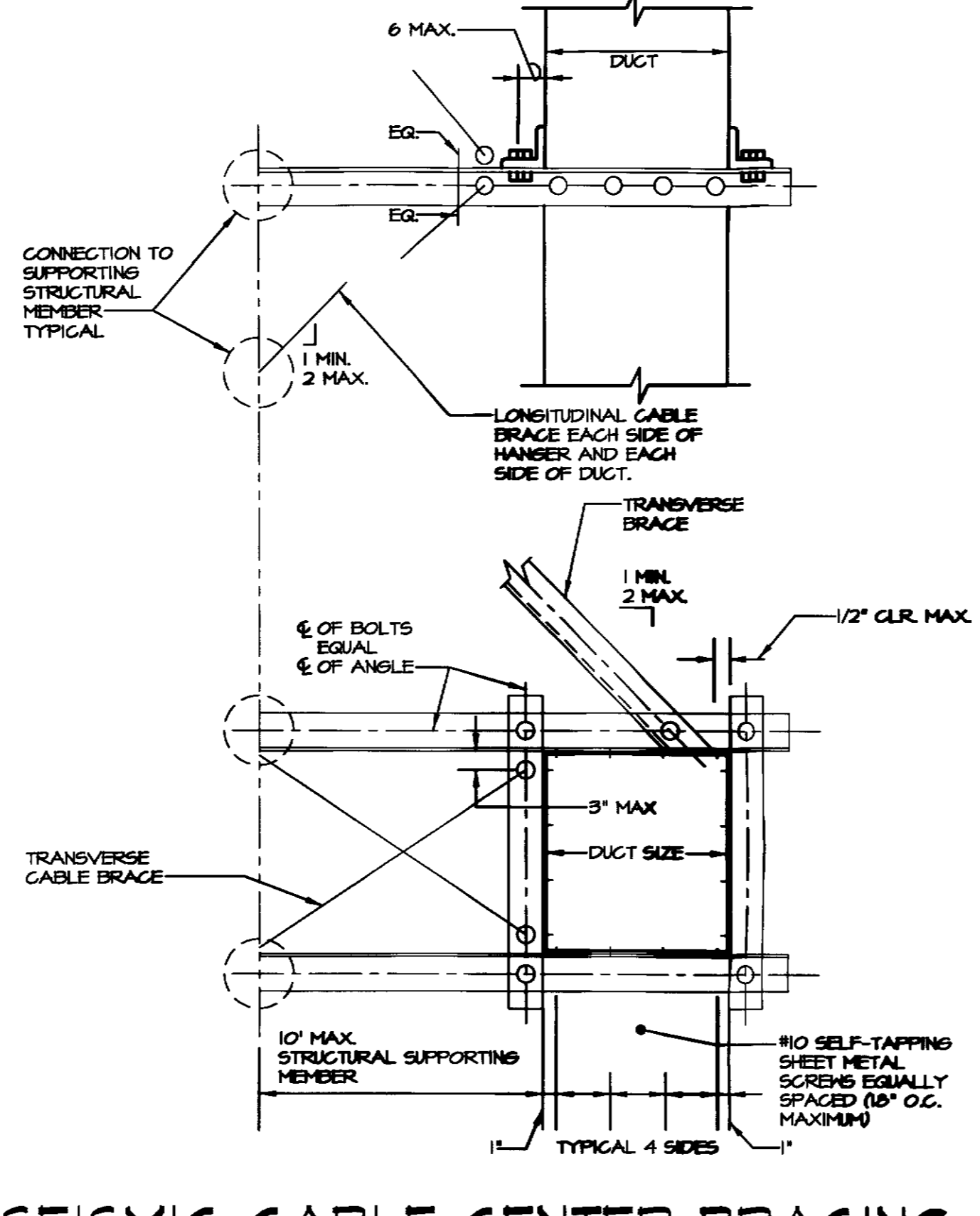


FLOOR PLAN-EXISTING CONDITIONS/ NEW WORK (PLUMBING)
SCALE: 1/8"=1'-0"



SEISMIC SIDE BRACING FOR RECTANGULAR DUCTS
NO SCALE

- NOTES:
 1. REFER TO SMACNA CHAPTER 3 FOR GENERAL REQUIREMENTS.
 2. WHEN A COMBINATION OF DUCTS IS USED IN LIEU OF ONE DUCT, AT LEAST 2 SIDES OF EACH DUCT MUST BE CONNECTED TO VERTICAL OR HORIZONTAL ANGLES AND THE COMBINED HEIGHT SHALL NOT EXCEED THAT GIVEN IN THE TABLE. (ADD HORIZONTAL ANGLES IF REQUIRED).
 3. SEE SMACNA TABLE 5-1, 6-1 OR 7-1 FOR VERTICAL HANGERS, DIAGONAL AND HORIZONTAL BRACES, BOLT SIZE, CONNECTION TO STRUCTURAL SUPPORTING MEMBERS AND SPACING OF BRACING.

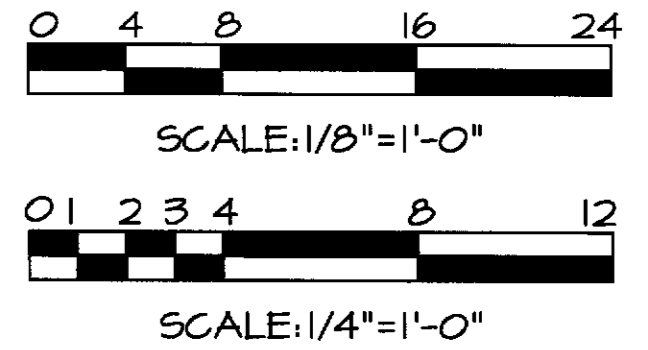


SEISMIC CABLE CENTER BRACING FOR RECTANGULAR DUCTS
NO SCALE

- NOTES:
 1. REFER TO SMACNA CHAPTER 3 FOR GENERAL REQUIREMENTS.
 2. WHEN A COMBINATION OF DUCTS IS USED IN LIEU OF ONE DUCT, AT LEAST 2 SIDES OF EACH DUCT MUST BE CONNECTED TO VERTICAL OR HORIZONTAL ANGLES AND THE COMBINED HEIGHT SHALL NOT EXCEED THAT GIVEN IN THE TABLE. (ADD HORIZONTAL ANGLES IF REQUIRED).
 3. WHERE "L" IS LESS THAN 7 FEET, SEE SMACNA TABLE 5-2B, 6-2B OR 7-2B, OTHERWISE SEE TABLE 5-2A, 6-2A OR 7-2A FOR VERTICAL HANGERS, DIAGONAL AND HORIZONTAL BRACES, BOLT SIZE CONNECTION TO SUPPORTING STRUCTURAL MEMBER, AND SPACING OF BRACING.

DRAWING NOTES

- 1) EXISTING SANITARY LINE BELOW SLAB TO REMAIN (TYPICAL). CONTRACTOR TO DETERMINE EXACT LOCATION OF EXISTING SANITARY SERVICE IN THE FIELD AND MAKE PROPER CONNECTION.
- 2) EXISTING 1" DOMESTIC WATER LINE ABOVE CEILING TO REMAIN. CONTRACTOR TO DETERMINE EXACT LOCATION OF EXISTING DOMESTIC WATER SERVICE IN THE FIELD AND MAKE PROPER CONNECTION.
- 3) CONNECT NEW 4" SANITARY PIPE BELOW SLAB TO EXISTING 4" SANITARY AS INDICATED (TYPICAL).
- 4) SANITARY PIPE BELOW SLAB (TYPICAL).
- 5) DOMESTIC COLD WATER LINE SUPPORTED ABOVE CEILING (TYPICAL).
- 6) DOMESTIC HOT WATER LINE SUPPORTED ABOVE CEILING (TYPICAL).
- 7) 1/2" DOMESTIC HOT AND COLD WATER LINE DOWN IN WALL TO SERVE SINK (TYPICAL).
- 8) 3/4" DOMESTIC COLD WATER LINE DOWNROUTED IN WALL TO SERVE TOILET (TYPICAL).
- 9) 3/4" DOMESTIC COLD WATER LINE DOWN IN WALL TO SERVE TOILET/HAND SINK AND 1/2" DOMESTIC HOT WATER LINE DOWN TO SERVE HAND SINK.
- 10) 3/4" DOMESTIC COLD AND HOT WATER LINE DOWN IN WALL TO SERVE SHOWERS.
- 11) 3/4" DOMESTIC HOT AND COLD WATER LINE DOWN IN WALL TO JANITOR'S SINK (TYPICAL).
- 12) FLOOR CLEANOUT (TYPICAL).
- 13) 1/4" DOMESTIC COLD WATER LINE ROUTED WITHIN WALL TO SERVE P-6. COORDINATE EXACT LOCATION IN THE FIELD.
- 14) 1/4" DOMESTIC COLD WATER LINE ROUTED WITHIN WALL TO SERVE P-5. COORDINATE EXACT LOCATION IN THE FIELD.
- 15) BALL VALVE (TYPICAL).
- 16) 2" SANITARY VENT LINE UP AND 3" TO SANITARY LINE DOWN (TYPICAL).
- 17) 2" SANITARY VENT LINE UP AND 2" TO SANITARY LINE DOWN (TYPICAL).
- 18) SANITARY VENT LINE SUPPORTED ABOVE CEILING (TYPICAL).
- 19) CONTRACTOR TO FIELD VERIFY/LOCATE EXISTING 3" SANITARY VENT THROUGH ROOF AND CONNECT 2" SANITARY VENT LINE ABOVE CEILING AS INDICATED.
- 20) 4" FLOOR DRAIN.
- 21) OUTLINE OF AIR HANDLING UNIT. REFER TO SHEET M-1 FOR MORE INFORMATION.
- 22) PROVIDE 3" DEEP TRAP AT CONDENSATE PIPE AT UNIT.
- 23) CONDENSATE PUMP MOUNTED ABOVE CEILING LITTLE GIANT MODEL VCL-24UL. PROVIDE CHECK VALVES LOCATED AT DISCHARGE OF PUMP AND IN HORIZONTAL PIPING AS INDICATED. PUMP SHALL BE 120 VOLTS, 1 PHASE WITH 1/8 HP.
- 24) 82 GALLON ELECTRIC WATER HEATER MOUNTED ON PLATFORM ABOVE CEILING. REFER TO DETAIL ON SHEET M-4 FOR PIPING AND MOUNTING DETAIL.
- 25) 1" PUMPED CONDENSATE PIPE SUPPORTED ABOVE CEILING.
- 26) ROUTE 1" CONDENSATE LINE DOWN FROM ABOVE CEILING AND DISCHARGE TO JANITOR'S SINK. ROUTE 1" CONDENSATE LINE EXPOSED ON WALL WITHIN JANITOR'S CLOSET.
- 27) PUMPED CONDENSATE PIPE CLEANOUT ABOVE CEILING.
- 28) REFER TO PART PLAN THIS SHEET FOR CONTINUATION OF WORK.
- 29) 1/2" DOMESTIC WATER HOT AND COLD LINE DOWN WITHIN WALL TO SERVICE FAUCET #8344.III WITH TOP BRACE, STOPS, 10-1/2" SPOUT, 3/4" HOSE THREAD ON SPOUT, INTEGRAL VACUUM BREAKER, AND ADJUSTABLE UNION COUPLINGS AS MANUFACTURED BY FIAT. MOUNT SERVICE FAUCET ON WALL 33-0" ABOVE FINISHED FLOOR.
- 30) 3" FLOOR DRAIN (TYPICAL).
- 31) 1/2" DOMESTIC HOT AND COLD WATER LINE DOWN IN WALL TO SERVE P-2B NURSE CONTROL SINK. INSTALL A TempControl THERMOSTATIC TEMPERATURE CONTROLLER BELOW COUNTERTOP AS MANUFACTURED BY SYMMONS, MODEL#S-200-N. LEAVING WATER TEMPERATURE NOT TO EXCEED 115°F.
- 32) 1/2" DOMESTIC HOT AND COLD WATER LINES CAPPED FROM STRUCTURE ABOVE FOR FUTURE CONNECTION.
- 33) 2" VENT PIPE FROM STRUCTURE ABOVE AND 2" SANITARY ROUGH-IN AT SLAB CAPPED FOR FUTURE CONNECTION.



REV#	DATE	REVISIONS DESCRIPTION

dp
DON PENN CONSULTING ENGINEERS
 3960 HIGHWAY 380, SUITE 101
 GRAPEVINE, TEXAS 75061
 972-410-2868 FAX 972-261-8411

F
FREDRICK WARD ASSOCIATES, INC.
 P.O. Box 727, 5 South Main Street Bel Air, Maryland 21014-0727
 Phone: 410-879-2090 or 410-838-7900 Fax: 410-893-1243
 Columbia, Maryland Warrenton, Virginia

TENANT RENOVATIONS FOR:
RMS LIFE LINE
 RIVERSIDE, CALIFORNIA

DATE: 9/11/01
 DRAWN BY: DLI
 CHECKED BY: DLI
 SHEET 2 OF 5
 DRAWN BY: DLI
 2011215.00
 JLR# 1-100a