

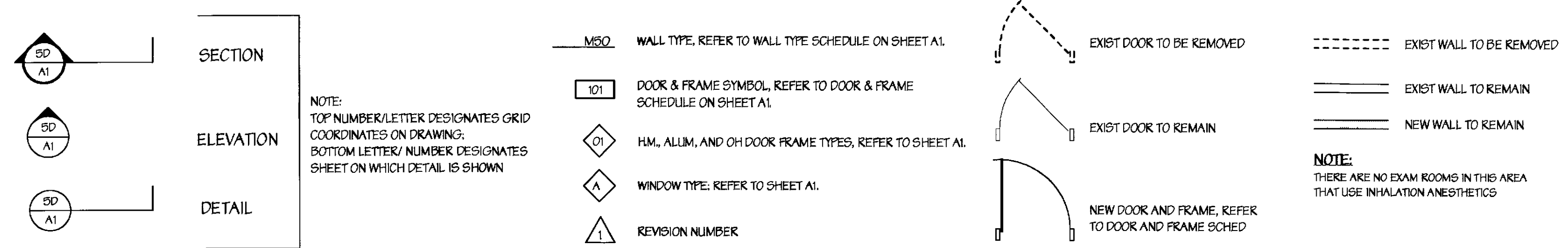
STANDARD ABBREVIATIONS

ABOVE	ABV	HANDICAP	HC	SQUARE FOOT	SQ FT or SF
ABOVE FINISH FLOOR	AFF	HARDWARE	HDW	SQUARE YARD	SQ YD or SY
ACOUSTIC or ACOUSTICAL	AC	HEATING	HTG	STAIN(ED)	STN
ACOUSTICAL CEILING TILE	ACT	HEAVYVENTING	HV	STAINLESS STEEL	SS
ADHESIVE	ADH	and AIR CONDITIONING	HVAC	STANDARD	STD
ADJUST or ADJUSTABLE	ADJ	HEAVY DUTY	HD	STEEL	STL
ALTERNATE	ALT	HIGH	HT	STORAGE	STOR
ALUMINUM	ALUM	HOLLOW CORE	HC	STRUCTURAL	STRUCT
ANCHOR BOLT	AB	HOLLOW METAL	HM	STRUCTURAL FACING TILE	SFT
ANGLE	ANG	HORIZONTAL	HKZ	SUSPENS (ED)	SUSP
ANGLE (D)	AND	HORIZONTAL CONTROL JOINT	HKCJ	SYSTEM	SYS
APPROXIMATE	APPROX	INCLUDE	INCL	TELEPHONE	TEL
ARCHITECT (UKAL)	ARCH	INSIDE DIAMETER	ID	TELEVISION	TV
AT	#	INSULATION	INSUL	THICK	THK
BEAM	BEM	INTERMEDIATE	INTER	TOILET TISSUE DISPENSER	TTD
BEARING	BKG	INTERIOR	INT	TOLERANCE	TOL
BELOW	BEL	INVERT	INV	TONGUE AND GROOVE	T&G
BELOW FINISHED FLOOR	BFF	JANITORS CLOSET	JAN	TOP OF STEEL	TOS
BIFUMINOUS	BIF	JOINT	JT	TOP OF FOOTING	TOF
BLOCK	BLK	JOIST	JST	TREAD	T
BLOCKING	BLKG	KITCHEN	KIT	TREATED	TRD
BOARD	BD	LAMINATE (D)	LAM	TRIPLE	TRP
BOTTOM	BTM	LAMINATED PLASTIC	LP	TURN DOWN SLAB	TDS
BOTTOM OF DECK	BDOS	LAWATORY	LAV	TYPICAL	TYP
BOTTOM OF FOOTING	BOF	LIGHT	LT	UNFINISHED	UNF
BUILDING	BLDG	LINEAR FEET	LN FT	UNLESS OTHERWISE	UNO
BUILT UP ROOF	BLUR	LIQUID SOAP DISPENSER	LSD	NOTED	
BULKHEAD	BLKH	LONG or LENGTH	L	VERTICAL	VERT
CABINET	CAB	LOUVER	LVR	VINYL BASE	VB
CARPET (ED)	CT	MANUFACTURER	MFR	VERTICAL CONTROL JOINT	VCKJ
CARPET EDGE	CE	MASONRY	MAS	VINYL COMPOSITION TILE	VCT
CAST IRON	CI	MASONRY OPENING	MO	WATER CLOSET	WC
CEILING	CLG	MATERIAL	MATL	WATER HEATER	WH
CEMENT	CEM	MAXIMUM	MAX	WATER RESISTANT	WR
CENTER	CTR	MECHANICAL	MECH	WATERPROOF (ING)	WP
CENTER LINE	CL	METAL	MTL	WEIF	WIF
CERAMIC TILE	CT	METAL THRESHOLD	MT	WELODED WIRE FABRIC	WWF
CHANNEL	CHAN	MINIMUM	MIN	WIDE or WIDTH	W
CHALK	CHK	MISCELLANEOUS	MISC	WITH	WI
CLOSET	CLO	MODULAR	MOD	WITHOUT	WO
COLUMN	COL	HOP AND ROOM HOLDER	MHH	WOOD	WD
COLUMN	COL	MOLDING	MLDG	YARD	YD
COMBINATION	COMP	MOUNTED	MTD		
CONCRETE	CONC	NATURAL	NAT		
CONCRETE MASONRY UNIT	CMU	NOMINAL	NOM		
CONSTRUCTION	CONSTR	NOT APPLICABLE	NA		
CONTINUOUS or CONTINUE	CONT	NOT IN CONTACT	NIC		
CONTROL JOINT	CJ	NOT TO SCALE	NTS		
CORNER GUARD	CG	NUMBER	NO or #		
CORROK	CORR	ON CENTER	OC		
COUNTER SINK	CS	OPENING	OPNG		
COURSE	CRS	OPPOSITE	OPP		
CLUB	CLB	OUTSIDE DIAMETER	OD		
CLUB FEET	CLFB	OVERALL	OA		
CLUB YARD	CLBY	OVERHEAD	OH		
CYLINDER	CYL	PAINTED	PNT		
		PAIR	PR		
		PAPER TOWEL DISPENSER	PTD		
		PARALLEL	PAK		
		PARTITION	PTN		
		PERPENDICULAR	PERP		
		PLASTIC or PLASTER	PLAS		
		PLATE	PLT		
		PLUMWOOD	PWD		
		POWDER ACCULATED	PAF		
		FASTENER	PRE-ENG		
		PREFABRICATED	PREFAB		
		PREFINISHED	PREFIN		
		PROPERTY LINE	PL		
		QUARRY TILE	QT		
		RADIATOR or RADIUS	RAD		
		RAIN LEADER	RL		
		RECOMMENDATION	RECOM		
		REFERENCE	REF		
		REFRIGERATOR	REFR		
		REINFORC (ING) (ED)	REINF		
		REINFORCED CONCRETE	RC		
		REGULIE	REGD		
		RESILIENT	RES		
		RETURN	RET		
		REVERSE	REV		
		RIBER	R		
		ROOF DRAIN	RD		
		ROOFING	RFG		
		ROOM	RM		
		ROUGH OPENING	RO		
		SANITARY MASHIN DISPENSER	SND		
		SCHEDULE	SCHED		
		SECTION	SECT		
		SHEATHING	SHTG		
		SHEET	SHT		
		SIMILAR	SM		
		SOAP DISPENSER	SD		
		SOLID CORE	SC		
		SPECIAL	SPL		
		SPECIFICATION	SPEC		
		SPLASH BLOCK	SB		
		SQUARE	SG		

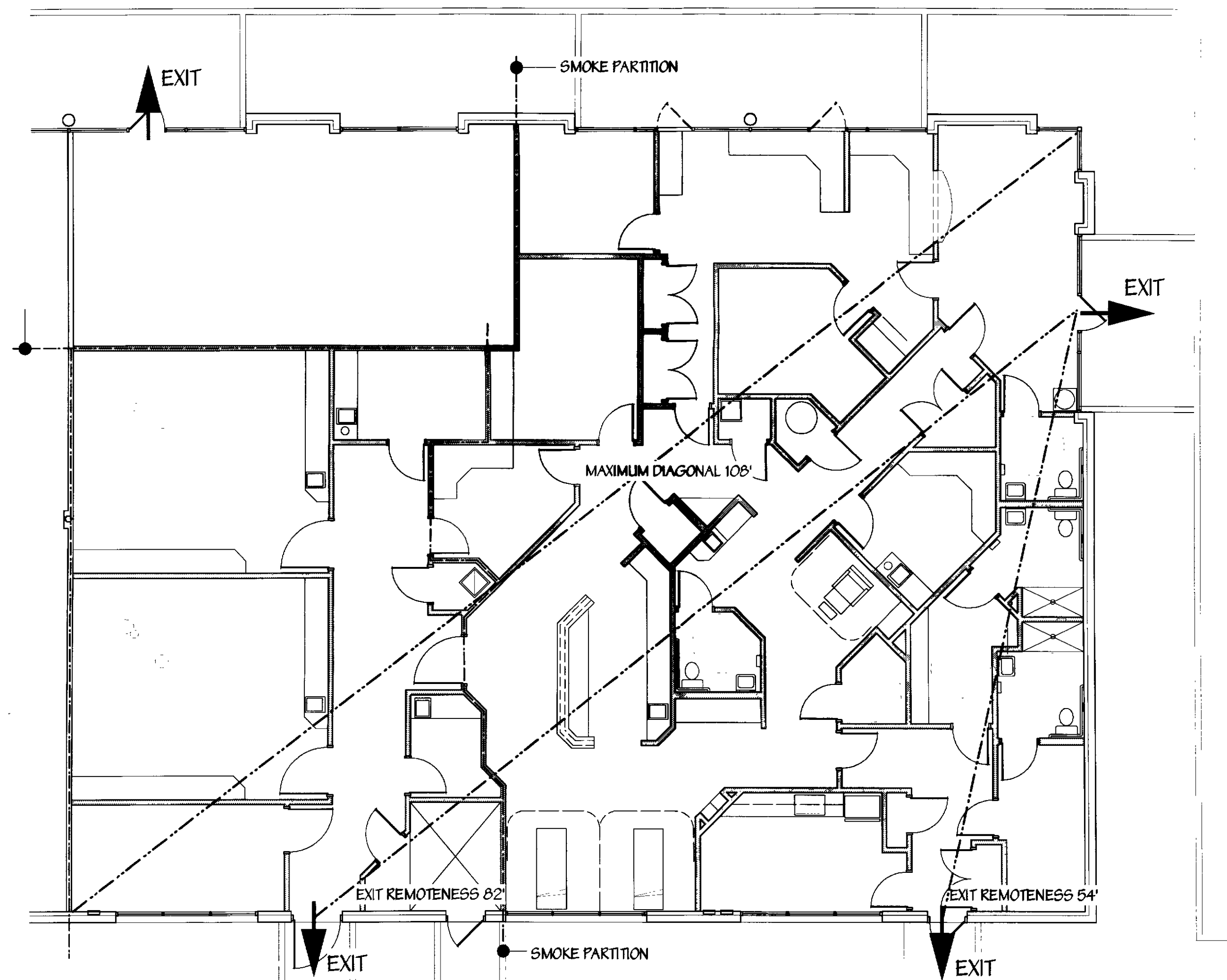
Tenant Renovations For:
RMS Life Line
 4100 Latham Street, Suite A
 Riverside, California

MECHANICAL/ELECTRICAL/PLUMBING		ARCHITECTURAL	
MECHANICAL / ELECTRICAL	MEP CONSULTANT	LOCAL ARCHITECT	ARCHITECTURAL CONSULTANT
DON PENN CONSULTING ENGINEERS 3950 HIGHWAY 360, SUITE 101 GRAPEVINE, TEXAS 76051 (817) 410-2858	JRL DESIGN CONSULTANTS, INC. 1901 N. FOUNTAIN GREEN ROAD BEL AIR, MARYLAND, 21015-1411 (410) 893-2822	COLE AND FRICK ASSOCIATES INC. 4195 CHESTNUT STREET RIVERSIDE, CALIFORNIA 92501 (909) 684-4011	FREDERICK WARD ASSOCIATES INC. P.O. BOX 727, 5 SOUTH MAIN STREET BEL AIR, MARYLAND 21014 (410) 879-2090 (410) 838-7900

ARCHITECTURAL SYMBOLS



EGRESS PLAN



GROUND FLOOR
SCALE: 1/8" = 1'-0"

DRAWING INDEX:

- T1 TITLE SHEET
- A1 FLOOR PLAN AND SCHEDULES
- A2 CASEWORK AND DETAILS
- A3 REFLECTED CEILING PLAN, DEMOLITION PLAN AND DETAILS
- M1 HVAC EXIST/HVAC NEW WORK
- M2 PLUMBING PLANS/HVAC
- M3 MECHANICAL DETAILS
- M4 MECHANICAL SCHEDULES
- M5 MECHANICAL SPECIFICATIONS
- E1 ELECTRICAL SCHEDULES AND SYMBOLS
- E2 ELECTRICAL POWER AND LIGHTING PLAN
- E3 ELECTRICAL PANELS AND RISER DIAGRAM
- E4 ELECTRICAL SPECIFICATIONS

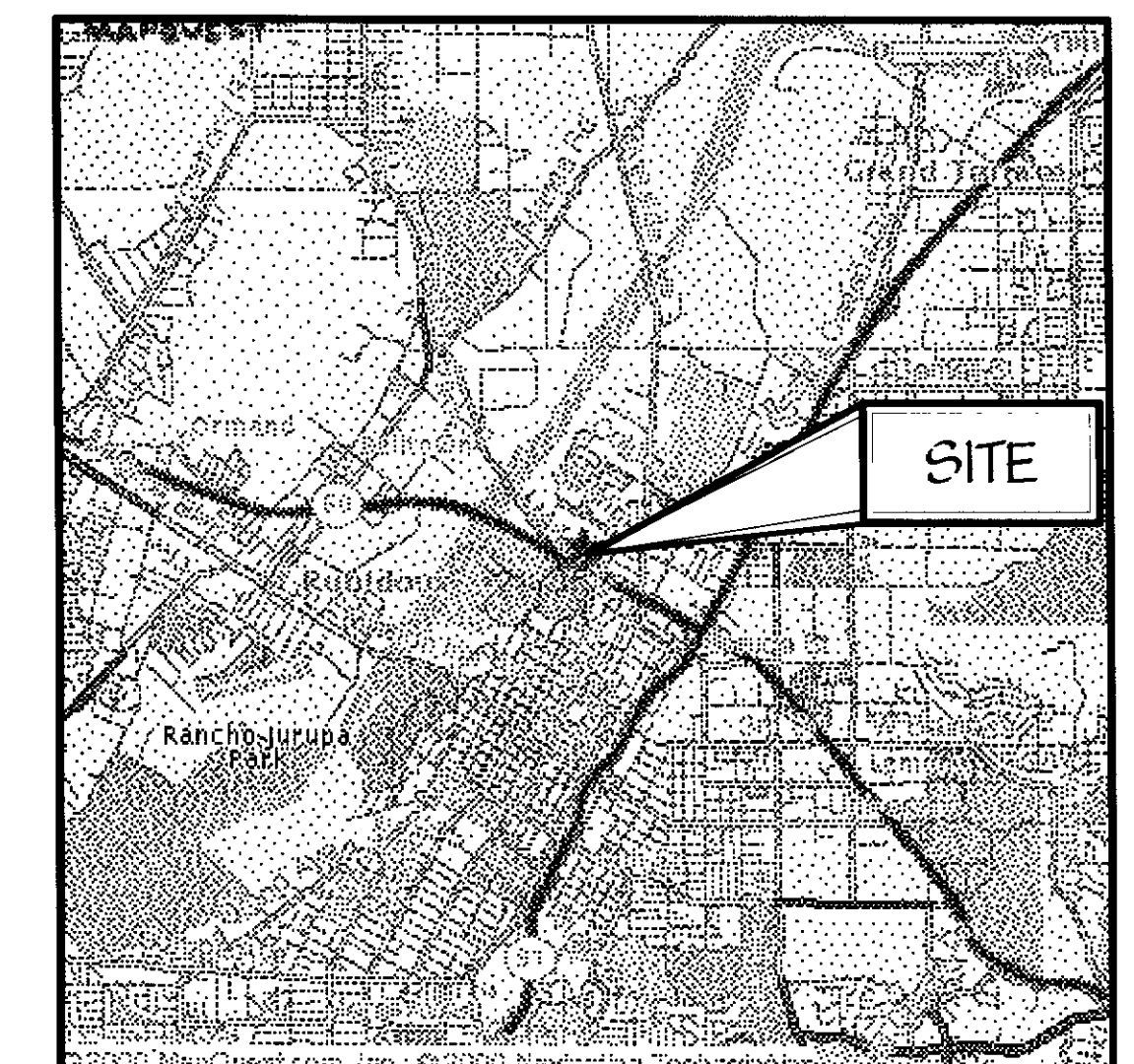
PROJECT INFORMATION

1998 CALIFORNIA BUILDING CODE
 USE GROUP: "B" BUSINESS CLINIC (MAXIMUM 5 PATIENTS)
 SPECIAL USE

TENANT IMPROVEMENTS OF EXISTING BUILDING
 TOTAL AREA OF IMPROVEMENTS - 5121 SQUARE FEET
 TOTAL OCCUPANTS - @ 100 SF/OCCUPANT 52 OCCUPANTS
 REQUIRED MEANS OF EGRESS - 2
 EXITS PROVIDED - THREE
 EXIT REMOTENESS:
 DIAGONAL OF AREA SERVED: 108'
 REQUIRED SEPARATION OF EXITS: 54'
 ACTUAL SEPARATION OF EXITS: 82'

VACANT TENANT AREA - 716 SQUARE FEET
 TOTAL OCCUPANTS - @ 100 SF/OCCUPANT (PRESUMED OFFICE USE) 8 OCCUPANTS
 REQUIRED MEANS OF EGRESS - 1
 EXITS PROVIDED - ONE

VICINITY MAP
SCALE: NTS



REV#	DATE	DESCRIPTION

Cole & Frick
 Architects, A.I.A.
 4195 Chestnut Street
 Riverside, California
 92501 909/684-4011

FREDERICK WARD ASSOCIATES, INC.
 ENGINEERS ARCHITECTS SURVEYORS
 P.O. Box 727, 5 South Main Street, Bel Air, Maryland 21014-0727
 Phone: 410-879-2090 or 410-838-7900 Fax: 410-899-1243
 Columbia, Maryland Warrenton, Virginia

TENANT RENOVATIONS FOR:
RMS LIFE LINE
 4100 LATHAM STREET, SUITE A
 RIVERSIDE, CALIFORNIA

DATE 8/11/00	DRAWING NO. T1
SCALE AS NOTED	
DESIGNED BY KDF	SHEET 01
DRAWN BY DKR	PWA JOB NUMBER 201215.00