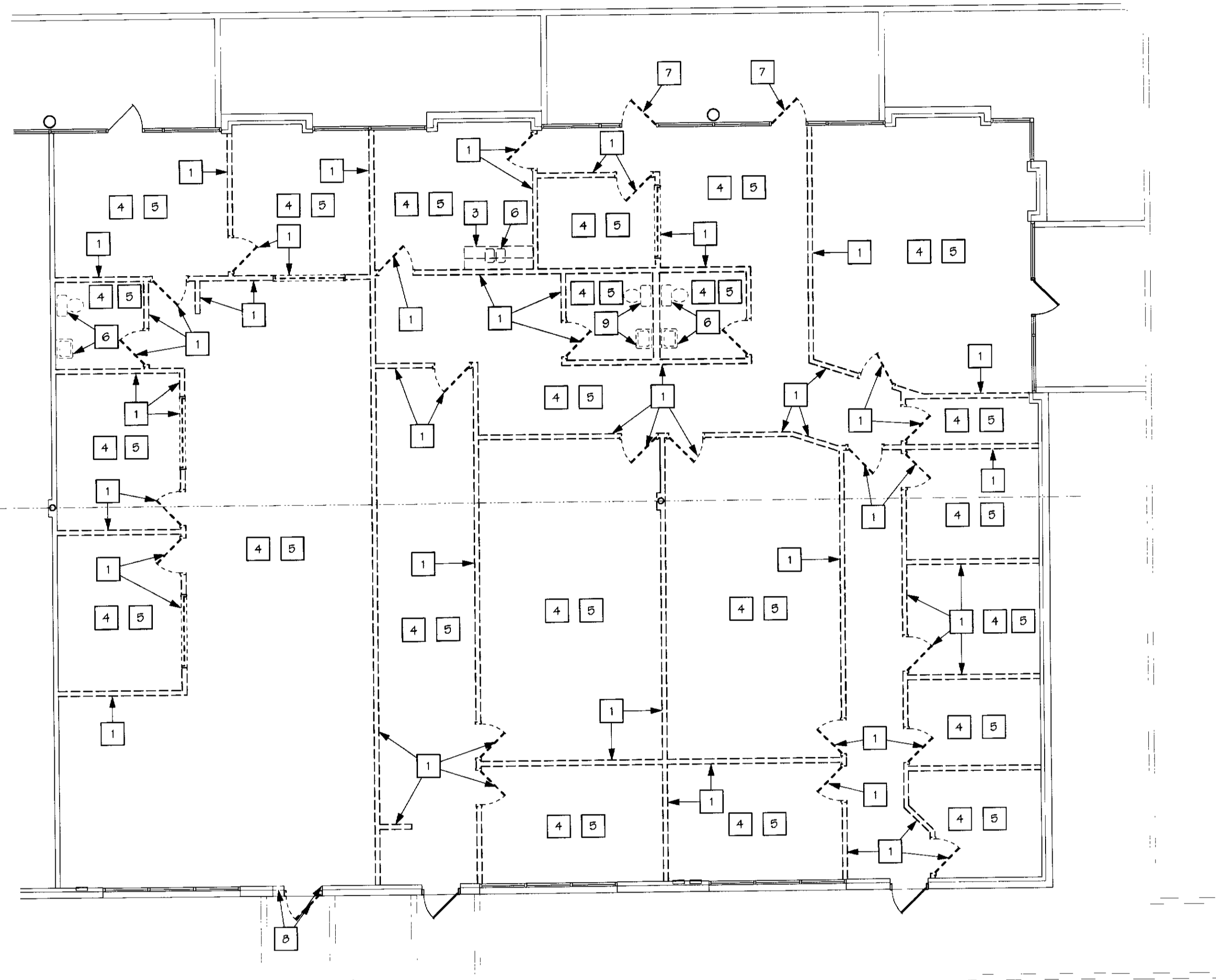
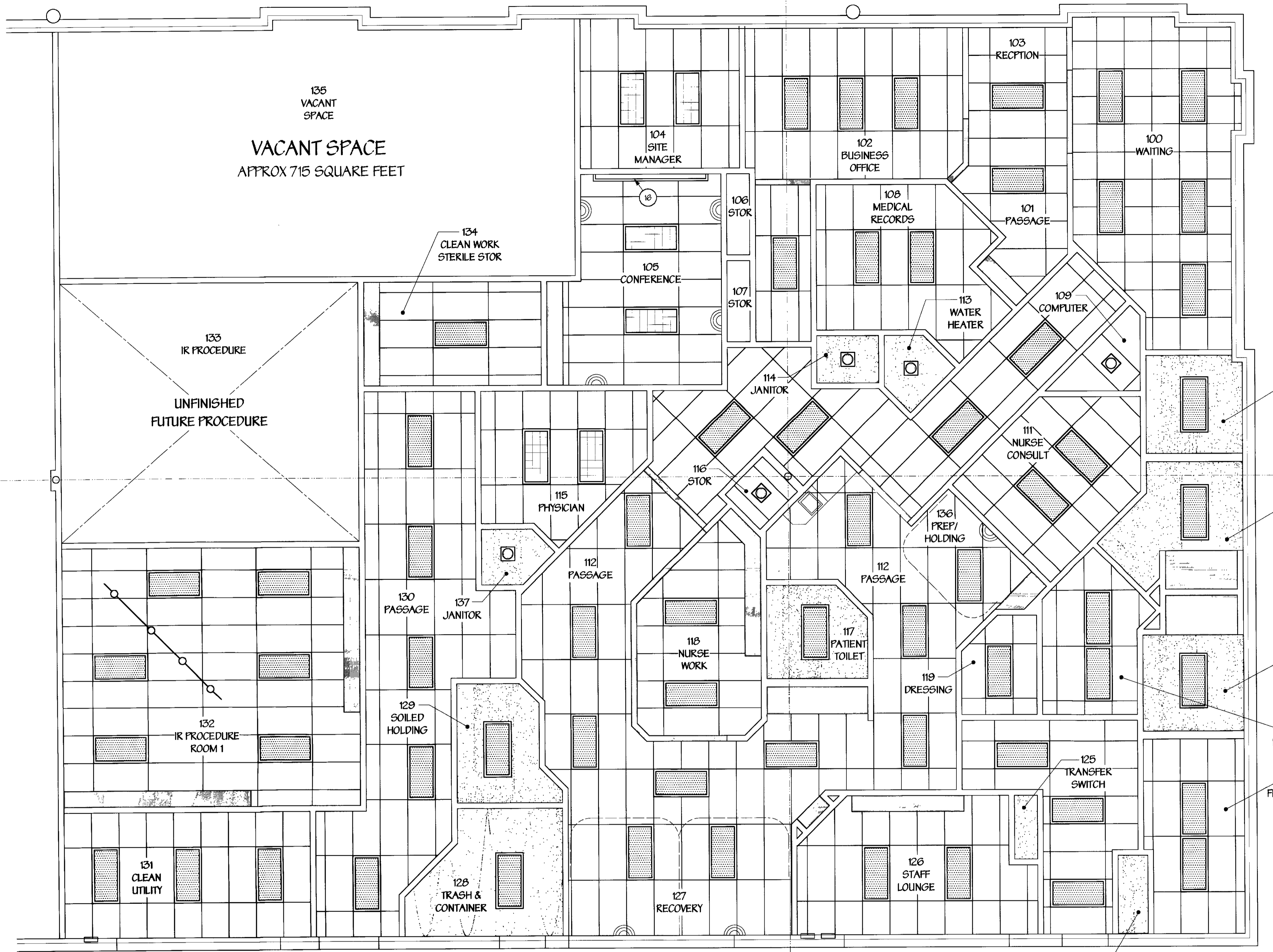


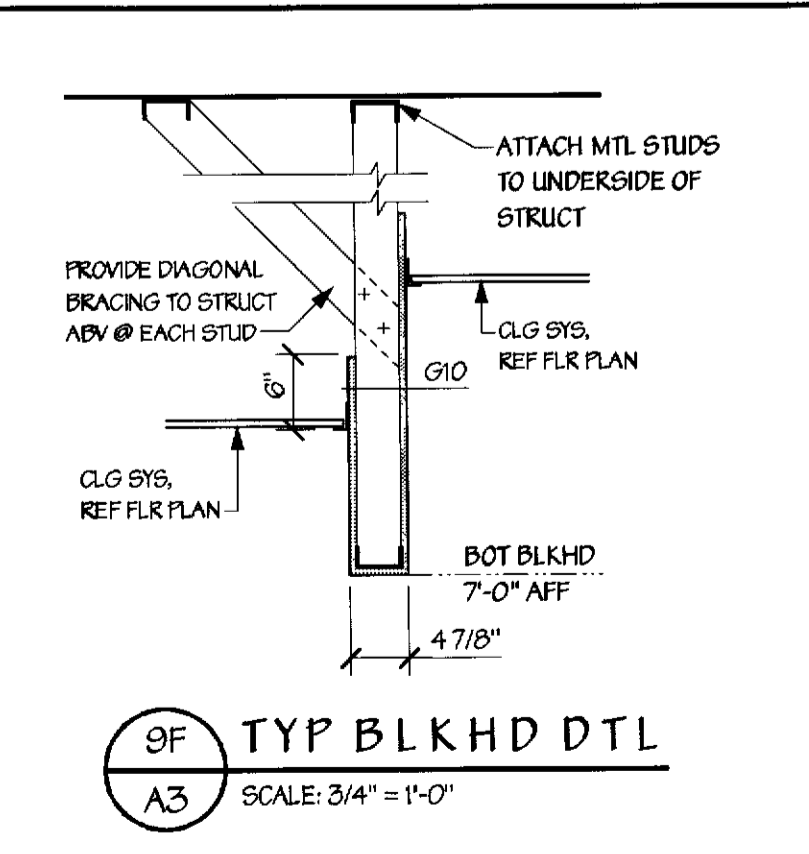
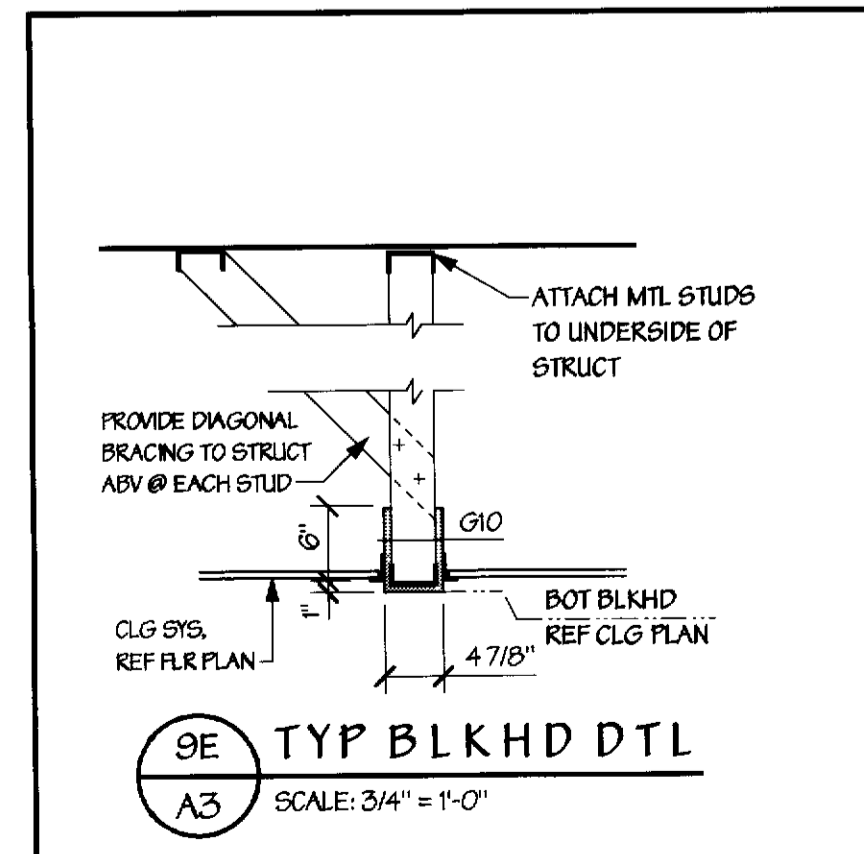
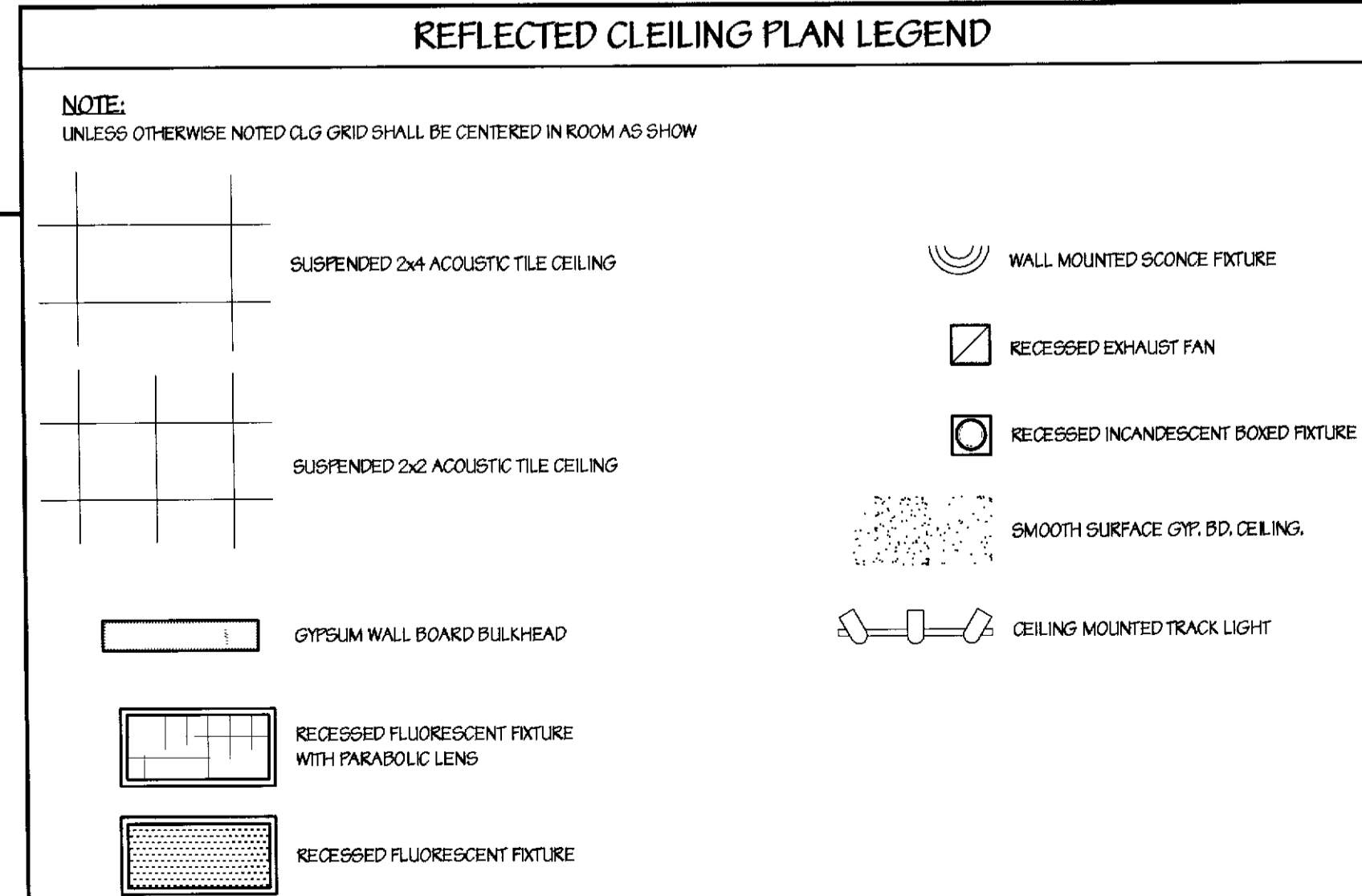
- DEMOLITION NOTES:** [1] — THIS SYMBOL DENOTES A DEMOLITION NOTE
1. REMOVE EXIST STUD / GWP PARTITION AND/OR DOORS AND FRAMES NEATLY PATCH AND PREP FLOORS AND ADJACENT WALLS AS REQD FOR INSTALLATION OF NEW WORK PER FLOOR PLAN.
  2. EXISTING WALL TO REMAIN. COORDINATE LIMITS OF DEMOLITION/EXISTING TO REMAIN WITH FLOOR PLAN.
  3. CAREFULLY REMOVE EXISTING CASEWORK AND ASSOCIATED PLUMBING WHERE APPLICABLE. SEE DEMO NOTE 6.
  4. REMOVE EXISTING CEILING IN THIS AREA.
  5. REMOVE EXIST FLOOR FINISH AND BASE IN THIS AREA. COORDINATE LIMITS OF FLOOR DEMO WITH NEW PLAN. PREPARE SUBSTRATE FOR INSTALLATION OF NEW FLOORING.
  6. REMOVE PLUMBING FIXTURE. REMOVE PLUMBING TO 4" BELOW SLAB AND CAP. PATCH SLAB AS REQD FOR UNIFORM FINISH.
  7. REMOVE EXISTING STOREFRONT DOOR AND TURN OVER TO LANDLORD. REFER TO FLOOR PLAN (CONSTRUCTION NOTE 6) FOR NEW STOREFRONT WORK.
  8. REMOVE EXISTING EXTERIOR DOOR AND FRAME. CAREFULLY SAW CUT EXISTING CONCRETE WALL TO CREATE ENLARGED WALL OPENING FOR NEW DOOR. REFER/COORDINATE WITH FLOOR PLAN.



7A DEMOLITION PLAN  
SCALE: 1/8" = 1'-0"



8C REFLECTED CEILING PLAN  
SCALE: 1/4" = 1'-0"



REV#	DATE	DESCRIPTION

**Cole & Frick**  
Architects, A.I.A.  
4195 Chestnut Street  
Riverside, California  
92501 909/684-4011

**FREDERICK WARD ASSOCIATES, INC.**  
ENGINEERS ARCHITECTS SURVEYORS  
P.O. Box 727, 5 South Main Street Bel Air, Maryland 21014-0727  
Phone: 410-879-2090 or 410-838-7900 Fax: 410-883-1243  
Columbia, Maryland Warrenton, Virginia

TENANT RENOVATIONS FOR:  
**RMS LIFE LINE**  
4100 LATHAM STREET, SUITE A  
RIVERSIDE, CALIFORNIA

DATE: 8/11/01	DRAWING NO.:
SCALE: AS NOTED	A3
DESIGNED BY: KDP	SHEET 1 OF
DRAWN BY: KJK/DPK	PWA JOB NUMBER: 201125.00