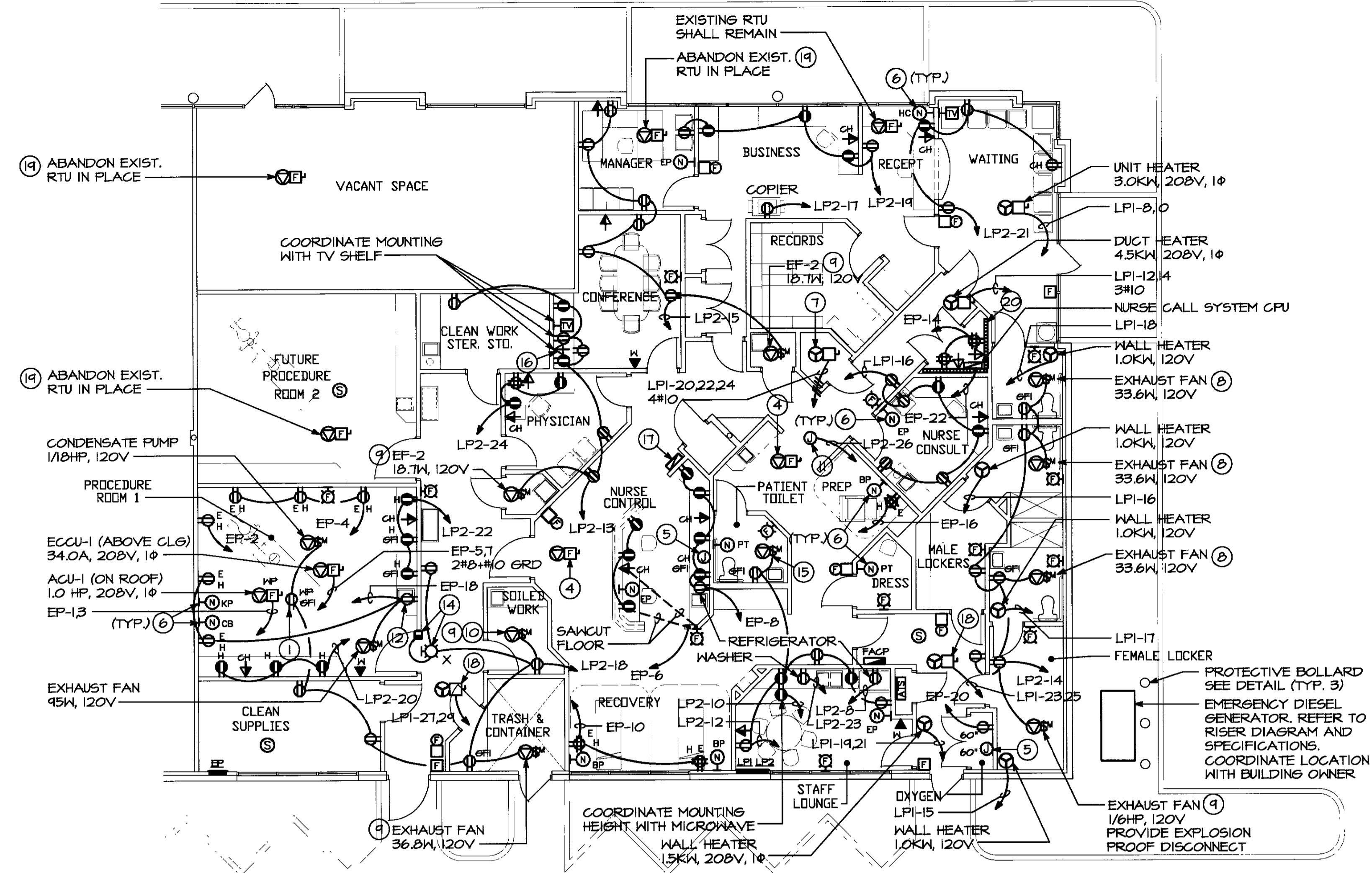


FLOOR PLAN - LIGHTING
SCALE: 1/8"=1'-0"



FLOOR PLAN - POWER
SCALE: 1/8"=1'-0"

NURSE CALL SYSTEM			
TYPE	LOCATION	DESCRIPTION/VOLTAGE	CAT. #
NCB	PATIENT PREP/ PATIENT DRESSING SINGLE GANG BACK BOX 48" AFF	HAND HELD CALL CORD WITH RESET BUTTON AT WALL. SEPARATE EMERGENCY CALL ACTIVATED BY REMOVAL OF PENDANT CHORD FROM WALL PANEL (PREFERRED), OR SEPARATE WALL BUTTON. PROVIDE CEILING MOUNTED INDICATION LIGHT IMMEDIATELY OUTSIDE CURTAIN TRACK AT EACH RECOVER/PREP POSITION.	EXPEDITOR NCGB SERIES
NCB	PATIENT TOILET/ PATIENT DRESSING THO GANG BACK BOX ROTATED 90° 48" AFF	WALL MOUNTED CALL SWITCH ACTIVATED BY PULL ON CHORD. PULL MUST NOT BE CANCELED BY SECOND OR REPEATED PULL ON CHORD. PROVIDE RESET BUTTON ABOVE CHORD ATTACHMENT, OR SIMILAR SEPARATE RESET PROVISION. PROVIDE WALL OR CEILING MOUNTED INDICATION LIGHT/TONE DEVICE OUTSIDE OF DOOR IDENTIFYING TYPE OF CALL. LOCATED TO MAXIMIZE STAFF VISIBILITY/NOTIFICATION.	EXPEDITOR NCPC SERIES
NCB	PROCEDURE ROOM SINGLE GANG BACK BOX 48" AFF	EMERGENCY CALL ("CODE BLUE") WALL MOUNTED CALL BUTTON WITH HINGED "ELBOW FLATE" TO FACILITATE EMERGENCY ACTIVATION. PUSH ONCE TO INITIATE CALL, PUSH SECOND TIME TO CANCEL (ALL OFF). PROVIDE WALL OR CEILING MOUNTED INDICATION LIGHT/TONE DEVICE OUTSIDE OF DOOR IDENTIFYING TYPE OF CALL. LOCATED TO MAXIMIZE STAFF VISIBILITY/NOTIFICATION.	EXPEDITOR P-1C SERIES
NCB	NURSE CONTROL/ SITE MANAGER/ NURSE CONSULTANT/ STAFF LOUNGE BACK BOX FURNISHED BY EXPEDITOR INSTALLED BY ELECT. CONTR. 48" AFF	5 KEY ROOM STATUS PANEL WITH TONE, SHOWS WHICH ROOMS ARE OCCUPIED, STAFF LOCATION, WHICH PATIENTS ARE NEXT, WHERE ASSISTANCE IS NEEDED OR WHERE A SPECIAL PROCEDURE IS REQUIRED.	EXPEDITOR P-6C SERIES
NCB	BUSINESS BACK BOX FURNISHED BY EXPEDITOR INSTALLED BY ELECT. CONTR. 48" AFF	5 KEY ROOM STATUS PANEL WITH TONE, SHOWS WHICH ROOMS ARE OCCUPIED, STAFF LOCATION, WHICH PATIENTS ARE NEXT, WHERE ASSISTANCE IS NEEDED OR WHERE A SPECIAL PROCEDURE IS REQUIRED.	EXPEDITOR P-6C SERIES
NCB	PROCEDURE ROOM THO GANG BACK BOX 12" AFF BELOW "CB" DEVICE	KICK PLATE	EXPEDITOR KP-1 SERIES
NCB	COMPUTER ROOM	CENTRAL PROCESSING UNIT (CPU); CONTROLS ALL LIGHT PANEL FUNCTIONS. REQUIRES (1) SINGLE LINE (R-1IC) TELEPHONE JACK AND (1) DEDICATED POWER OUTLET.	EXPEDITOR

DRAWING NOTES

- MOUNT ON ROOF NEAR MECHANICAL UNIT FOR MAINTENANCE
- CONTRACTOR SHALL INSTALL "HFC" CABLE IN LIEU OF EMT IN ALL PATIENT CARE AREAS. METAL GLAD (MC), RIMEX AND AC CABLE IS NOT PERMITTED IN PATIENT CARE AREAS PER NEC 511.
- PROVIDE "HOSPITAL" GRADE RECEPTACLES IN ALL "PATIENT CARE" AREAS PER NEC 511.
- EXISTING ROOF TOP UNIT SHALL REMAIN
- PROVIDE A FLUSH MOUNTED JUNCTION BOX WITH 3/4" CONDUIT TO CEILING PLENUM SPACE FOR LOW VOLTAGE EQUIPMENT WIRING. VERIFY LOCATION
- EXPEDITOR NURSE CALL SYSTEM DEVICE LOCATION. CONTRACTOR SHALL FURNISH AND INSTALL COMPLETE NURSE CALL SYSTEM. PROVIDE CONDUIT FROM EACH OUTLET LOCATION TO CEILING SPACE ABOVE. COORDINATE ALL WORK WITH OWNER'S VENDOR, EXPEDITOR SYSTEMS (1-800-843-4651). REFER TO SCHEDULE ON THIS SHEET. COORDINATE ALL LOCATIONS WITH OWNER.
- WATER HEATER ABOVE CEILING - 6.0KW, 208V, 3Ø
- CONNECT TO LIGHT SWITCH SERVING THE ROOM.
- CONTROL WIRING AND DEVICES FURNISHED AND INSTALLED BY AUTOMATIC TEMPERATURE CONTROL CONTRACTOR
- EXHAUST FAN - 47.1K, 120V
- CIRCUIT FOR ELECTRONIC DAMPERS
- MOUNT RECEPTACLE BELOW SINK TO SERVE INFA-RED AUTOMATIC FAUCET.
- MAKE ALL CONNECTIONS TO EXAMINE LIGHT, FURNISHED BY OWNER, AND ASSOCIATED WALL SWITCH PER MANUFACTURER'S RECOMMENDATIONS. COORDINATE EXACT LOCATION OF WALL SWITCH WITH OWNER.
- MOUNT "IN USE" SIGN OVER DOOR AND INTERLOCK WITH DOOR CONTACT SWITCH SO THAT SIGN ENERGIZES WHEN DOOR IS CLOSED. DOOR SWITCH TO BE EDWARDS #503A.
- EXHAUST FAN - 33.6K, 120V. CONNECT TO LIGHT SWITCH
- PROVIDE 1" EMPTY CONDUIT FROM TV SHELF DOWN TO BASE CABINET BELOW FOR VCR CABLING. COORDINATE MOUNTING HEIGHTS WITH ARCHITECTURAL ELEVATIONS.
- PROVIDE A FLUSH MOUNTED REMOTE GENERATOR ANNUNCIATOR PANEL.
- UNIT HEATER ABOVE CEILING - 3.0KW, 208V, 1Ø
- REMOVE CONDUIT AND WIRE BACK TO SOURCE

EX. PANEL EP			
120/208 VOLTS 3Ø 4 WIRE 225 AMP MAIN L.O.			
DESCRIPTION	B	C	DESCRIPTION
ACCU-1	15	1	20 RECEPTACLES
	3	4	20 RECEPTACLES
EGCU-1	35	5	6 20 RECEPTACLES
	7	8	20 RECEPTACLES
FUTURE HEAT	9	10	20 RECEPTACLES
	11	12	20 GENERATOR CTRL.
FUTURE A.C.	13	14	20 RECEPTACLES
	15	16	20 RECEPTACLES
BATTERY CHARGER	20	17	18 20 RECEPTACLES
GENERATOR HTR.	20	19	20 20 RECEPTACLES
LIGHTING	20	21	22 20 NURSE CALL
LIGHTING	20	23	24 20 FUTURE RECEPTACLES
LIGHTING	20	25	26 20 FUTURE RECEPTACLES
FUTURE LIGHTING	20	27	28 20 FUTURE RECEPTACLES
FUTURE LIGHTING	20	29	30 20 FUTURE RECEPTACLES

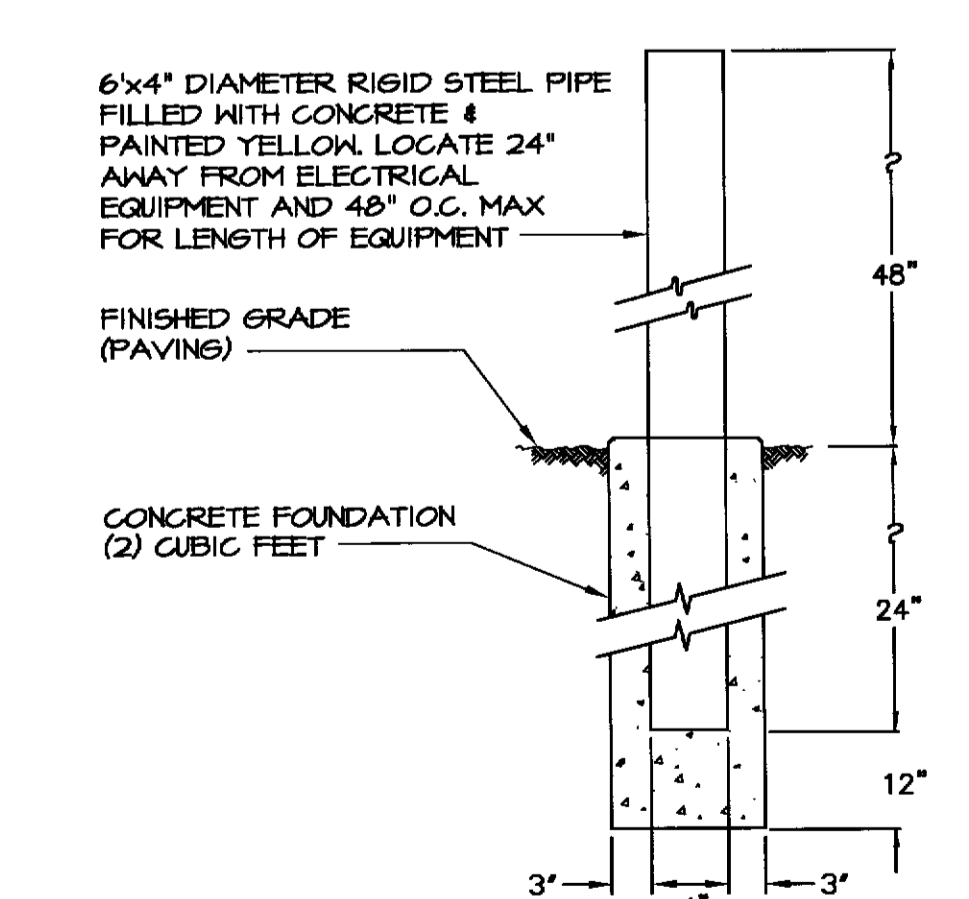
* PROVIDE LOCK CLIP ON CIRCUIT BREAKER

EX. PANEL LPI			
120/208 VOLTS 3Ø 4 WIRE 225 AMP MAIN L.O.			
DESCRIPTION	B	C	DESCRIPTION
EXISTING AHU-1	50	1	2 EXISTING PANEL LP2
EXISTING AHU-2	50	7	8 20 SPARE
SPARE	50	9	10 20 SPARE
SPARE	20	13	14 30 DUCT HEATER
WALL HEATER	20	15	16 20 WALL HEATER
WALL HEATER	20	17	18 20 WALL HEATER
RECEPTACLES	20	19	20 20 WALL HEATER
WALL HEATER	20	21	22 25 WATER HEATER
SPARE	20	25	26 20 SPARE
SPARE	20	27	28 20 SPARE
SPARE	20	29	30 20 SPARE

* PROVIDE NEW CIRCUIT BREAKER

EX. PANEL LP2			
120/208 VOLTS 3Ø 4 WIRE 225 AMP MAIN L.O.			
DESCRIPTION	B	C	DESCRIPTION
EXISTING AHU-4	40	1	2 20 LIGHTING
	3	4	20 LIGHTING
EXISTING AHU-5	40	5	6 20 LIGHTING
	7	8	20 RECEPTACLES
LIGHTING	20	9	10 20 RECEPTACLES
LIGHTING	20	11	12 20 RECEPTACLES
RECEPTACLES	20	13	14 20 RECEPTACLES
RECEPTACLES	20	15	16 20 RECEPTACLES
RECEPTACLES	20	17	18 20 RECEPTACLES
RECEPTACLES	20	19	20 20 RECEPTACLES
RECEPTACLES	20	21	22 20 RECEPTACLES
RECEPTACLES	20	23	24 20 RECEPTACLES
FACP	20	25	26 20 ELECTRONIC DAMPERS
SPARE	20	27	28 20 SPARE
SPARE	20	29	30 20 SPARE

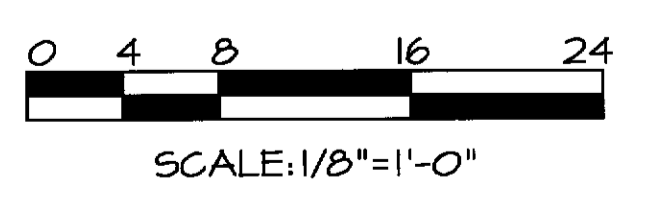
* PROVIDE LOCK CLIP ON CIRCUIT BREAKER



PROTECTIVE POST-DETAIL
NO SCALE

GENERAL NOTES

- CONNECT EXIT SIGNS, EMERGENCY BATTERY UNITS AND NIGHT LIGHTS (NL) TO THE UNSWITCHED PORTION OF THE LIGHTING CIRCUIT SERVING THAT RESPECTIVE AREA.



REVISIONS	
REV#	DESCRIPTION

--	--	--	--	--	--	--	--	--	--

dp
DON PENN
CONSULTING ENGINEERS
3950 HIGHWAY 380, SUITE 101
GRAPEVINE, TEXAS 75061
817-410-2868 FAX 817-261-8411

F
FREDRICK WARD ASSOCIATES, INC.
ENGINEERS P.O. Box 727, 5 South Main Street, Rd Air, Maryland 21014-0727
ARCHITECTS Phone: 410-879-2090 or 410-838-7900 Fax: 410-893-1243
SURVEYORS Columbia, Maryland Warrenton, Virginia

TENANT RENOVATIONS FOR:
RMS LIFE LINE
RIVERSIDE, CALIFORNIA

DATE 9/11/01	DRAWING NO. E2
SCALE AS NOTED	SHEET 2 OF 4
DESIGNED BY M.L.B.	DRAWN BY M.L.B.
2011215.00	
JLR# 1-1000	