

ROOM FINISH SCHEDULE:

Room #	Scheduled Name	Floor Fin	Base Type	Wall Fin	Ceiling Type	Ceiling Ht	Trim	Special	Notes
100	WAITING	CPT	RS	PT-A2	AC	8'-6"	PT-A1		
101	RECEPTION	CPT	RS	PT-A2	AC	8'-6"	PT-A1		
102	BUSINESS OFFICE	CPT	RS	PT-A2	AC	8'-6"	PT-A1		
103	SITE MANAGER	CPT	RS	PT-A2	AC	8'-6"	PT-A1		
104	FILE WORK AREA	CPT	RS	PT-A2	AC	8'-6"	PT-A1		
105	COMPUTER AND TELEPHONE	CPT	RS	PT-A2	AC	8'-6"	PT-A1		
106	STORAGE	CPT	RS	PT-A2	AC	8'-6"	PT-A1		
107	PASSAGE	SV	RC	PT-B	AC	8'-6"	PT-A1		
108	STORAGE	SV	RC	PT-B	AC	8'-6"	PT-A1		
109	STORAGE	SV	RC	PT-B	AC	8'-6"	PT-A1		
110	DRESSING	SV	RC	PT-B	AC	8'-6"	PT-A1		
111	PUBLIC TOILET	VT	RC	PT-B	GWB/PT-C	8'-0"	PT-A1		*USE WK GWB
112	NURSE CONSULT	SV	RC	PT-B	AC	8'-6"	PT-A1		
113	PREP/HOLDING	SV	RC	PT-B	AC	8'-6"	PT-A1		
114	PATIENT TOILET	SV	RC	PT-B	GWB/PT-C	8'-0"	PT-A1		*USE WK GWB
115	NURSE WORK	SV	RC	PT-B	AC	8'-6"	PT-A1		
116	PATIENT RECOVERY	SV	RC	PT-B	AC	8'-6"	PT-A1		
117	PHYSICIAN	CPT	RS	PT-A2	AC	8'-6"	PT-A1		
118	PASSAGE	SV	RC	PT-B	AC	8'-6"	PT-A1		
119	SOILED HOLDING	SV	RC	PT-B	AC	8'-6"	PT-A1		
120	IK PROCEDURE	SSV	SSV	PT-B	AC-1	8'-0"	PT-A1		*SCRUBBABLE WALL FIN. 2
121	IK PROCEDURE	SSV	SSV	PT-B	AC-1	8'-0"	PT-A1		*SCRUBBABLE WALL FIN. 2
122	CLEAN UTILITY	SV	RC	PT-B	AC	8'-6"	PT-A1		*1 HR RATED CLG SYS, 1
123	WATER HEATER	SV	RC	PT-B	GWB/PT-C	8'-0"	PT-A1		
124	JANITOR	SV	RC	PT-B	GWB/PT-C	8'-0"	PT-A1		
125	PASSAGE	VT	RC	PT-A2	AC	8'-6"	PT-A1		
126	NEW ELECTRIC	VT	RC	PT-A2	AC	8'-6"	PT-A1		
127	ELECTRICAL	VT	RC	PT-A2	AC	8'-6"	PT-A1		
128	ONCEG	VT	RC	PT-A2	GWB/PT-C	8'-0"	PT-A1		*1 HR RATED CLG SYS
129	COATS	SV	RC	PT-A2	AC	8'-6"	PT-A1		
130	STAFF LOCKERS	VT	RC	PT-A2	AC	8'-6"	PT-A1		
131	TOILET	VT	RC	PT-B	GWB/PT-C	8'-0"	PT-A1		*USE WK GWB
132	STAFF LOUNGE	VT	RC	PT-A2	AC	8'-6"	PT-A1		*PROVIDE TILE BORDER, 1
133	CONFERENCE	CPT	RS	PT-A2	AC	8'-0"	PT-A1		
200	WAITING	CPT	RS	PT-A2	AC	8'-6"	PT-A1		
201	RECEPTION	CPT	RS	PT-A2	AC	8'-6"	PT-A1		
202	APN	CPT	RS	PT-A2	AC	8'-6"	PT-A1		
203	PASSAGE	SV	RC	PT-B	AC	8'-6"	PT-A1		
204	FELLOWS	CPT	RS	PT-A2	AC	8'-6"	PT-A1		
205	OFFICE	CPT	RS	PT-A2	AC	8'-6"	PT-A1		
206	PATIENT TOILET	SV	RC	PT-B	GWB/PT-C	8'-0"	PT-A1		*USE WK GWB
207	TREATMENT A	SV	RC	PT-B	AC	8'-6"	PT-A1		
208	TREATMENT B	SV	RC	PT-B	AC	8'-6"	PT-A1		

ROOM FINISH MATERIALS:

FLOOR FINISH:
 CPT = CARPET - Marquette Commercial Modern Gasco
 SV = SHEET VINYL - Armstrong Classic Corton Sandusky 06051
 VT = VINYL TILE - Armstrong Standard Elation VCT 0501 "Many Green" - Field

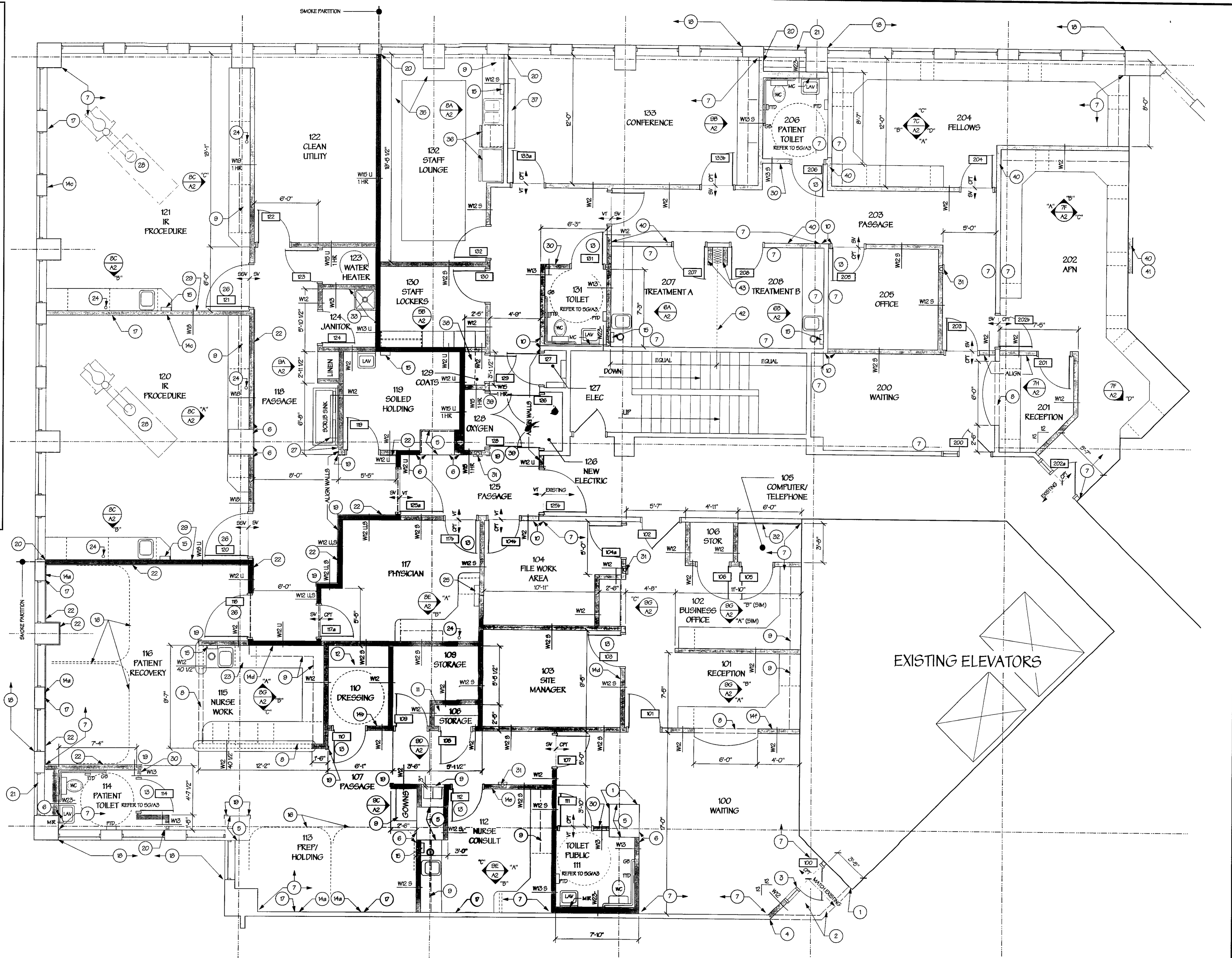
WALL FINISH:
 PT-A1 = PAINTED - Sherman Williams SW 1031 LKV 645 - "Modern Gray" - Gloss
 PT-A2 = PAINTED - Sherman Williams SW 1031 LKV 645 - "Modern Gray" - Semi Gloss
 PT-B = PAINTED - Sherman Williams SW 1172 LKV 725 - "Masada Green" - Semi Gloss
 PT-C = CEILING - Sherman Williams - Ceiling White
 WC = WALL COVERING - Koroseal Esquire E921-04 "Formica 7023-50" "Gray Canvas" Formica 7226-50 "Cayote" Formica 7247-50 "Paisley Gray"

CEILING TYPE:
 AC = TYPICAL ACoustICAL TILE (2'x4')
 AC-1 = SCRUBBABLE ACoustICAL TILE (2'x4')
 GWS/PT = GYPSUM WALL BOARD / PAINTED

BASE TYPE:
 RS = RUBBER STRAIGHT - Koppie TP 7760 1/8" TRK Rubber - "Deep Water"
 RC = RUBBER COVE - Koppie TP 7760 1/8" TRK Rubber - "Deep Water"
 SV = SHEET VINYL - INTRIGUAL COVE 6" HIGH
 SSV = SEAMLESS GULDED SEAM SHEET VINYL - INTRIGUAL COVE 6" HIGH

PLASTIC LAMINATE:
 PROVIDE THE FOLLOWING LAMINATE COLORS PER THE INT. ELEVATIONS:
 FLAS LAM "A"
 FLAS LAM "B"
 FLAS LAM "C"

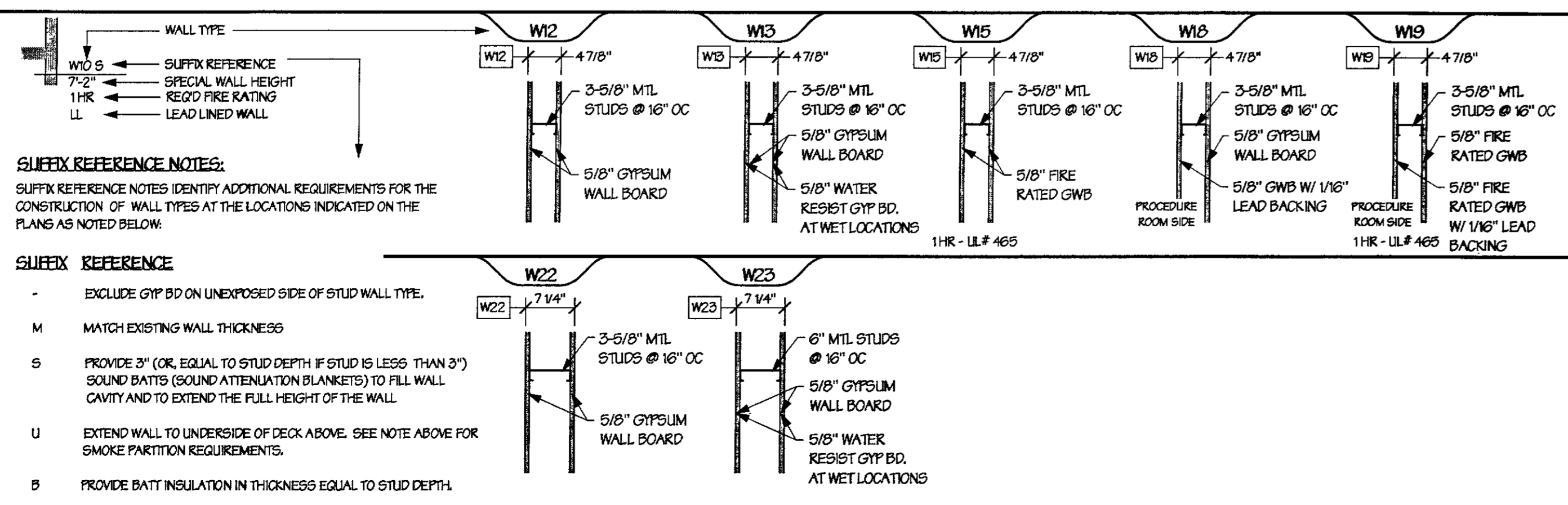
NOTES:
 1 - IT IS THE INTENT IN THESE AREAS TO INSTALL THE NEW CEILING AT THE SAME HEIGHT AS THE EXISTING. CONFIRM AND ADVISE ARCHITECT OF ANY CONCERNS.
 2 - THE CEILING IN THESE AREAS ARE HIGHER THAN EXISTING. ADJUST SPRINKLER PROPS ACCORDINGLY.



01 FLOOR PLAN
 SCALE: 1/4" = 1'-0"
 REFER TO SHEET A3 FOR DOOR SCHEDULE
 REFER TO SHEET A3 FOR LISTING OF CONSTRUCTION NOTES

WALL TYPES:

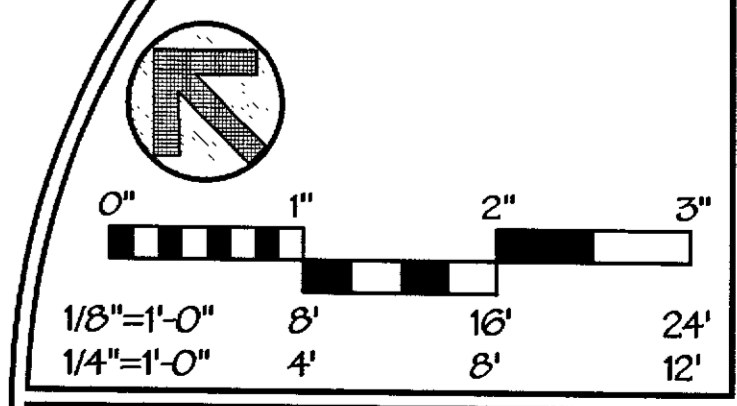
GENERAL NOTES:
 1. UNLESS OTHERWISE NOTED, ALL WALL STUDS AND GWS SHALL EXTEND MIN 6" ABOVE FINISHED CEILING AND BE BRACKED TO STRUCTURAL ANCH @ 48" OC.
 2. APPLIED FINISHES ARE SHOWN ON THE FINISH SCHEDULE.
 3. PROVIDE BLOCKING IN WALL AS REQ'D TO INSTALL CASEWORK AND WALL MOUNTED ACCESSORIES.
 4. LEAD SHEILDING (WHERE INDICATED) SHALL BE INSTALLED BEHIND GYP BOARD TO A MINIMUM HEIGHT OF 7'-0" AFF. WALL LEAD SHALL BE TIED TO LEAD AT ADJACENT WALLS AND SHALL BE INSTALLED BEHIND ANY PENETRATIONS, SUCH AS ELECTRICAL JUNCTION BOXES TO MAINTAIN A CONTINUOUS BARRIER OF LEAD PROTECTION IN THE THICKNESS INDICATED.



TOILET ROOM ACCESSORIES

MODEL NO.	DESCRIPTION	11 PUBLIC TOILET	114 PATIENT TOILET	101 TOILET	208 PATIENT TOILET
PTD	PAPER TOWEL DISP.	ONE	ONE	ONE	ONE
TTD	TOILET TISSUE DISP.	ONE	ONE	ONE	ONE
GB	GRAB BAR	ONE	ONE	ONE	ONE
MIR	MIRROR (24"X20")	ONE	ONE	ONE	ONE
MC	MEDICINE CABINET	ONE	ONE	ONE	ONE
FRD	FEMINE WASH DISPENSER (COORD. LOCATION W/ OWNER)	ONE	ONE	ONE	ONE

LEAD PROVIDE QUANTITIES OF ACCESSORIES AS NOTED AT EACH TOILET ROOM. SEE TOILET ROOM DETAILS & SPECIFICATIONS FOR MOUNTING LOCATIONS & HEIGHTS. PROVIDE ALL MISC. WALL BLOCKING REQ'D FOR INSTALLATION.



FLOOR PLAN, WALL & ROOM SCHEDULE

REV#	DATE	DESCRIPTION

MECHANICAL & ELECTRICAL DESIGN CONSULTANTS, INC.
 1901 N. Fountain Green Road
 Big Lake, MN 55129-1411
 (612) 885-8888
 info@meedesign.com

Edward Schalk, FIDES + BICK
 ARCHITECTURAL DESIGNER
 19211 Center Point Blvd.
 Big Lake, MN 55129-1414
 (612) 885-8888
 info@edward-schalk.com

INSYNIC ARCHITECTURAL DESIGNS, INC.
 3837 JARRETTVILLE PLE
 JARRETTVILLE, MARYLAND 21084
 PHONE 410-857-9300
 FAX 410-857-2553

TEMM RENOVATIONS FOR: RMS LIFELINE
 22201 Monroe, Suite
 Detroit, Michigan 48224

DRAWING NO. **A1**
 SHEET OF
 DATE: 10/14/02
 DRAWN BY: EJP
 JOB NUMBER: 102001
 CHECKED BY: KJP