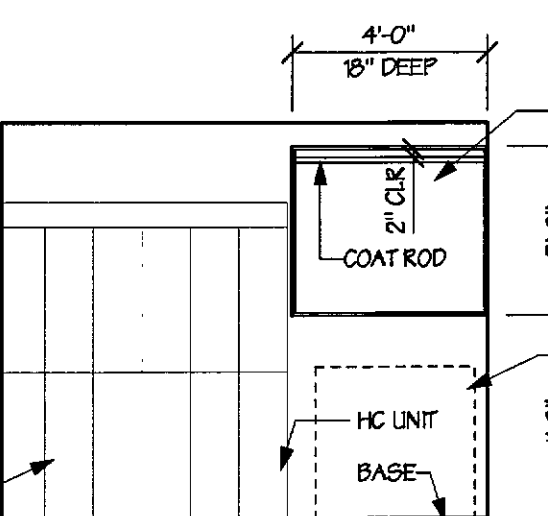


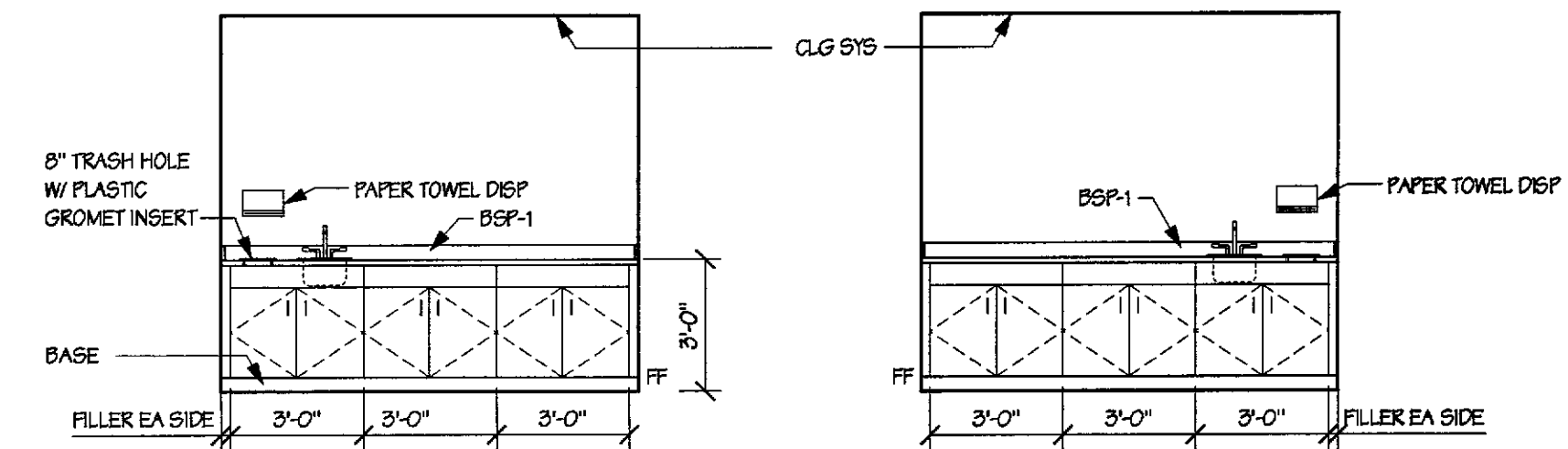
REFLECTED CEILING LEGEND		UNL. G/LG GRID CENTERED IN ROOM	
	2x4 ACOUSTICAL CEILING GRID		2x4 FLUORESCENT FIXTURE
	SMOOTH SURFACE GYP. BD. CEILING		CEILING MOUNTED TRACK LIGHT
	GYP. WALL BOARD BULKHEAD		WALL MOUNTED SCONCE FIXTURE
	RECESSED EXHAUST FAN		RECESSED CAN LIGHT
	HVAC SUPPLY		HVAC RETURN

NOTE: UNLESS OTHERWISE NOTED, G/LG GRID SHALL BE CENTERED IN ROOM AS SHOWN.

PROVIDE STEEL MULTIPLE TIER LOCKERS BY PENCO (OR EQUAL). SIZE SHALL BE 2 HIGH - 12 WIDE x 18 DEEP. PROVIDE ONE HC ACCESSIBLE UNIT WHERE SHOWN. PROVIDE 4" HIGH BASE AND SLOTTING TOP. PROVIDE MANUFACTURER'S STANDARD HANDLES WITH KEYS. PROVIDE THREE KEYS FOR EACH LOCKER. MINIMUM OF THREE HOURS IN EACH LOCKER AND ALL OTHER STANDARD ACCESSORIES. LOCKERS SHALL BE FINISHED IN 701 "SPRAY GREEN". LOCKERS SHALL BE CONSTRUCTED AND INSTALLED PER MANUFACTURER'S STANDARD SPECIFICATIONS AND RECOMMENDATIONS.

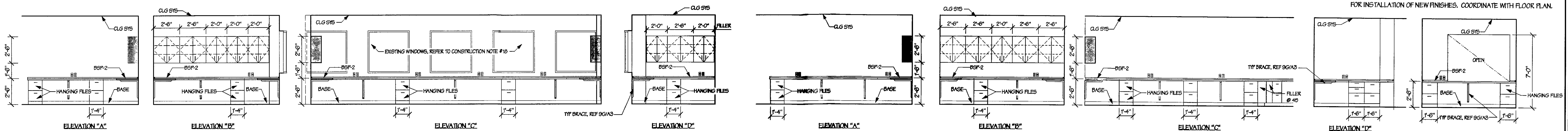


5B 130 STAFF LOCKERS
SCALE: 1/4" = 1'-0"



6A 207 TREATMENT A
SCALE: 1/4" = 1'-0"
PLASTIC LAMINATE COLORS:
CABINETS - "PLAS LAM D", COUNTERTOPS - "PLAS LAM C"

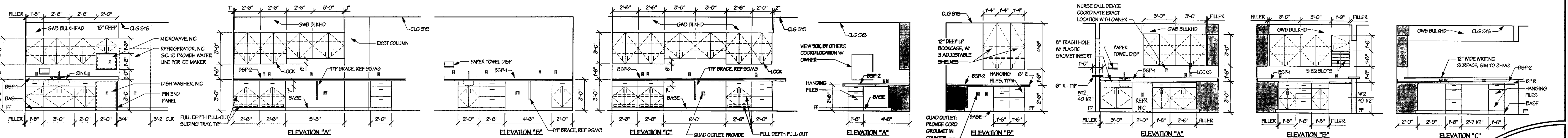
6B 208 TREATMENT B
SCALE: 1/4" = 1'-0"
PLASTIC LAMINATE COLORS:
CABINETS - "PLAS LAM D", COUNTERTOPS - "PLAS LAM C"



7C 204 FELLOWS - INTERIOR ELEVATIONS
SCALE: 1/4" = 1'-0"
PLASTIC LAMINATE COLORS:
WALL CABINETS - "PLAS LAM B", BASE CABINETS - "PLAS LAM D", COUNTERTOPS - "PLAS LAM A"

7F 202 APN - INTERIOR ELEVATIONS
SCALE: 1/4" = 1'-0"
PLASTIC LAMINATE COLORS:
WALL CABINETS - "PLAS LAM B", BASE CABINETS - "PLAS LAM D", COUNTERTOPS - "PLAS LAM A"

7H 201 RECEPTION
SCALE: 1/4" = 1'-0"
PLASTIC LAMINATE COLORS:
CABINETS - "PLAS LAM B", COUNTERTOPS - "PLAS LAM A"

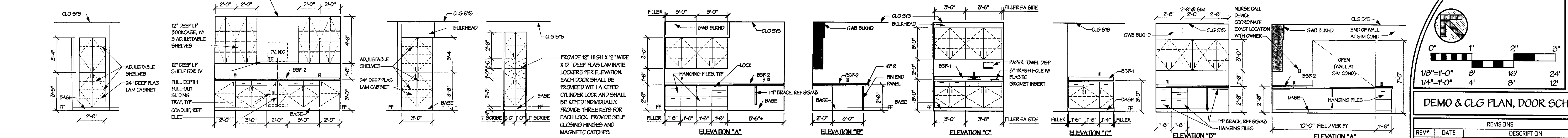


8A 132 STAFF LOUNGE
SCALE: 1/4" = 1'-0"
PLASTIC LAMINATE COLORS:
WALL CABINETS - "PLAS LAM B", BASE CABINETS - "PLAS LAM D", COUNTERTOPS - "PLAS LAM A"

8C 120 AND 121 IR PROCEDURE - INTERIOR ELEVATION
SCALE: 1/4" = 1'-0"
PLASTIC LAMINATE COLORS:
WALL CABINETS - "PLAS LAM B", BASE CABINETS - "PLAS LAM D", COUNTERTOPS - "PLAS LAM A"

8E 115 NURSE WORK - INTERIOR ELEVATION
SCALE: 1/4" = 1'-0"
PLASTIC LAMINATE COLORS:
WALL CABINETS - "PLAS LAM D", BASE CABINETS - "PLAS LAM D", COUNTERTOPS - "PLAS LAM C"

8G 115 NURSE WORK - INTERIOR ELEVATION
SCALE: 1/4" = 1'-0"
PLASTIC LAMINATE COLORS:
WALL CABINETS - "PLAS LAM D", BASE CABINETS - "PLAS LAM D", COUNTERTOPS - "PLAS LAM C"



9A 118 PASSAGE
SCALE: 1/4" = 1'-0"
PLASTIC LAMINATE COLORS:
WALL CABINETS - "PLAS LAM D"

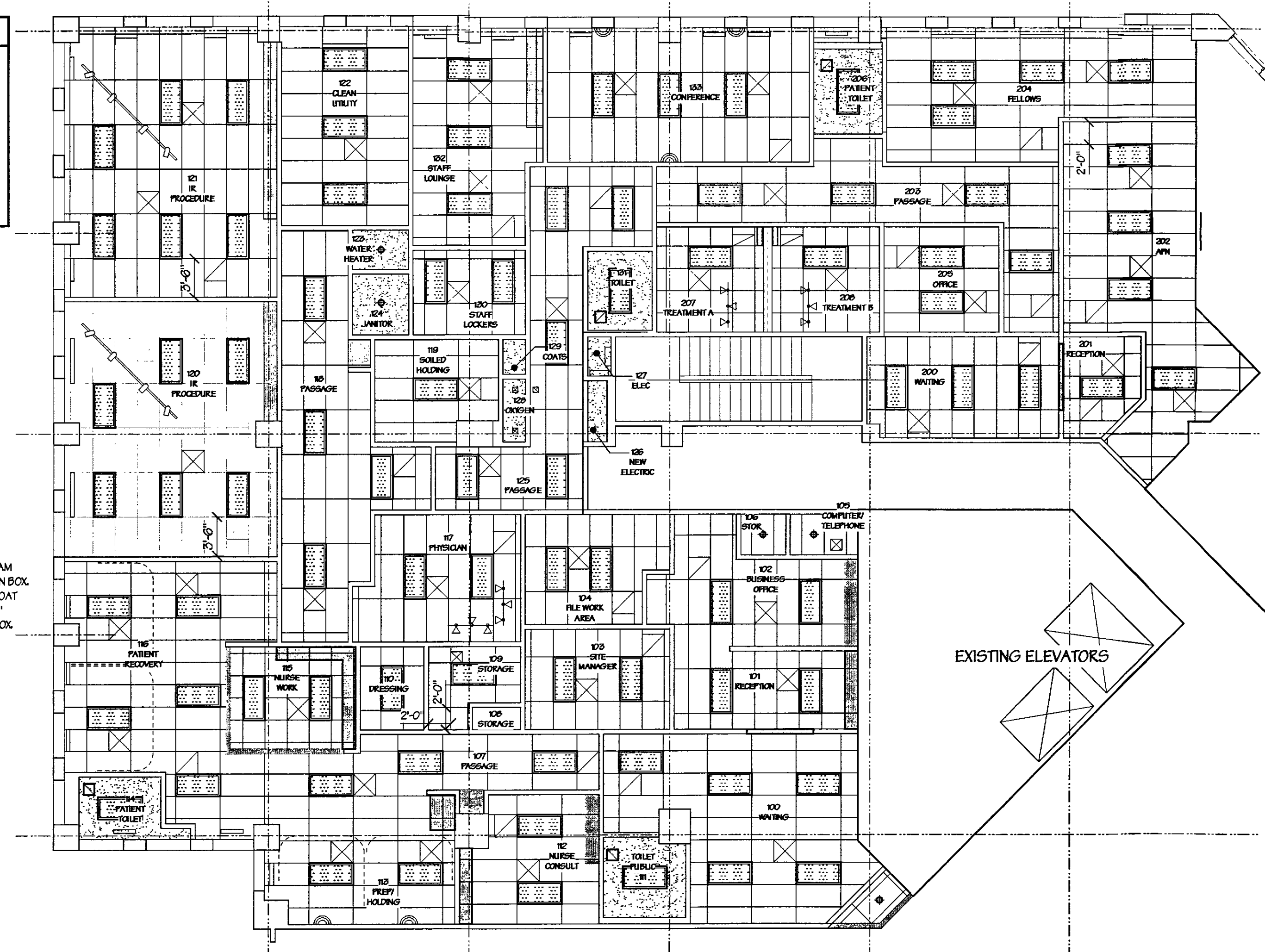
9B 133 CONFERENCE
SCALE: 1/4" = 1'-0"
PLASTIC LAMINATE COLORS:
CABINETS - "PLAS LAM B", COUNTERTOPS - "PLAS LAM A"

9C 113 PREF/HOLD
SCALE: 1/4" = 1'-0"
PLASTIC LAMINATE COLORS:
WALL CABINETS - "PLAS LAM D"

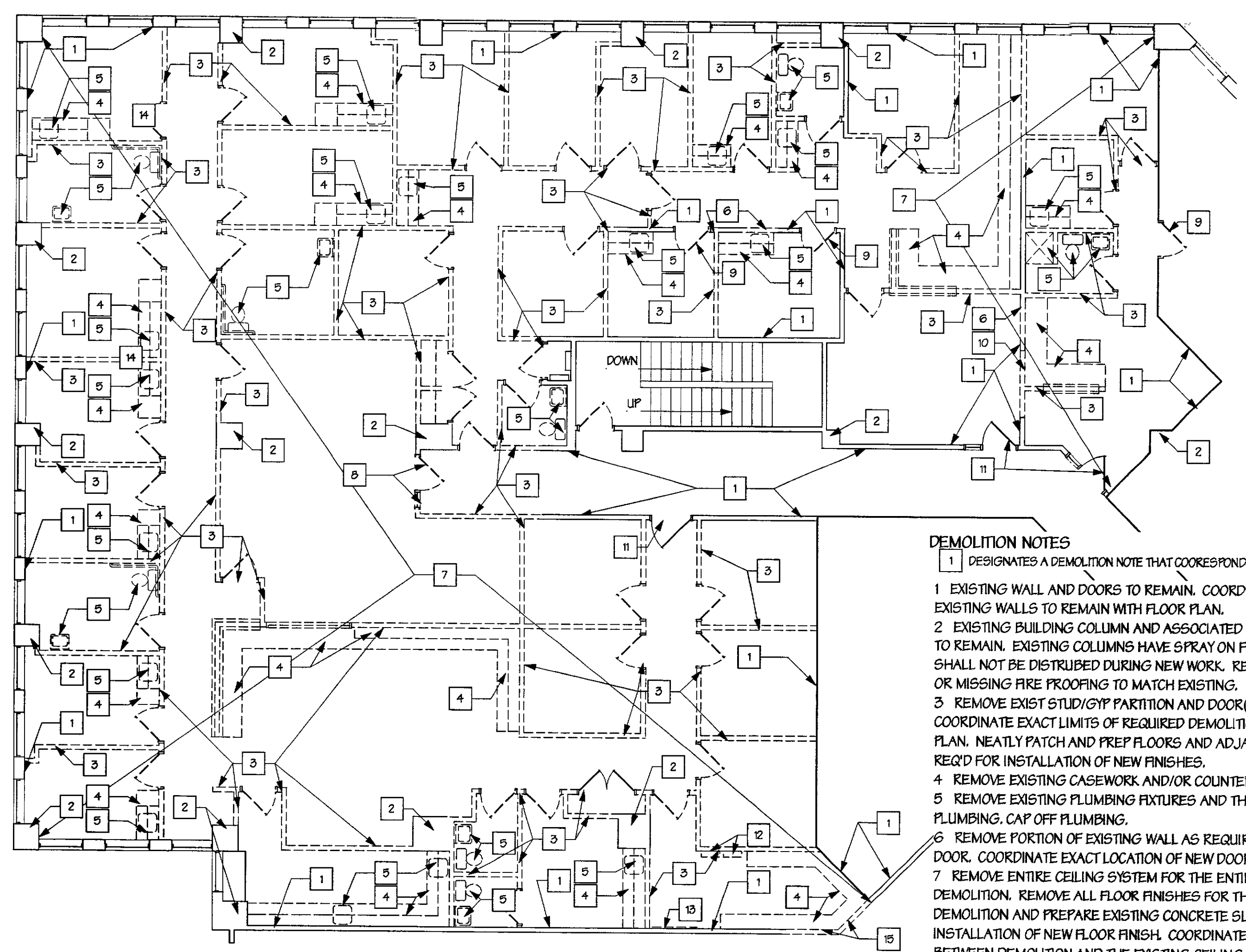
9D 107 PASSAGE
SCALE: 1/4" = 1'-0"
PLASTIC LAMINATE COLORS:
WALL CABINETS - "PLAS LAM D"

9E 112 NURSE CONSULT - INTERIOR ELEVATIONS
SCALE: 1/4" = 1'-0"
PLASTIC LAMINATE COLORS:
WALL CABINETS - "PLAS LAM B", BASE CABINETS - "PLAS LAM D", COUNTERTOPS - "PLAS LAM A"

9G 101 RECEPTION AND 102 BUSINESS - INTERIOR ELEVATIONS
SCALE: 1/4" = 1'-0"
PLASTIC LAMINATE COLORS:
WALL CABINETS - "PLAS LAM B", BASE CABINETS - "PLAS LAM D", COUNTERTOPS - "PLAS LAM A"

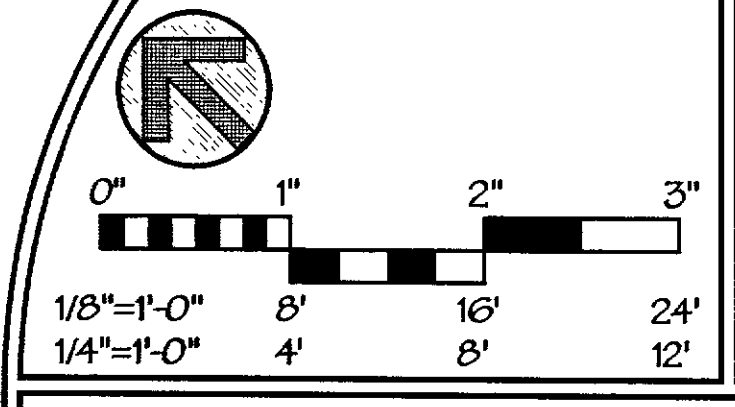


2 REFLECTED CEILING PLAN
SCALE: 1/8" = 1'-0"



1 DEMOLITION PLAN
SCALE: 1/8" = 1'-0"

- DEMOLITION NOTES**
- 1 DESIGNATES A DEMOLITION NOTE THAT CORRESPONDS TO THE NOTES BELOW.
 - 2 EXISTING WALL AND DOORS TO REMAIN. COORDINATE LIMITS OF EXISTING WALLS TO REMAIN WITH FLOOR PLAN.
 - 3 EXISTING BUILDING COLUMN AND ASSOCIATED GYP BOARD WRAP TO REMAIN. EXISTING COLUMNS HAVE SPRAY ON FIREPROOFING WHICH SHALL NOT BE DISTURBED DURING NEW WORK. REPAIR ANY DAMAGED OR MISSING FIRE PROOFING. REPAIR ANY DAMAGED OR MISSING FIRE PROOFING.
 - 4 REMOVE EXIST STUD/GYP PARTITION AND DOOR(S)/FRAME(S). COORDINATE EXACT LIMITS OF REQUIRED DEMOLITION WITH THE FLOOR PLAN. NEATLY PATCH AND PREP FLOORS AND ADJACENT WALLS AS REQ'D FOR INSTALLATION OF NEW FINISHES.
 - 5 REMOVE EXISTING CASEWORK AND/OR COUNTERTOP.
 - 6 REMOVE EXISTING PLUMBING FIXTURES AND THEIR ASSOCIATED PLUMBING, CAP OFF PLUMBING.
 - 7 REMOVE PORTION OF EXISTING WALL AS REQUIRED TO INSTALL NEW DOOR. COORDINATE EXACT LOCATION OF NEW DOOR WITH FLOOR PLAN.
 - 8 REMOVE ENTIRE CEILING SYSTEM FOR THE ENTIRE AREA OF DEMOLITION. REMOVE ALL FLOOR FINISHES FOR THE ENTIRE AREA OF DEMOLITION AND PREPARE EXISTING CONCRETE SLAB FOR INSTALLATION OF NEW FLOOR FINISH. COORDINATE THE TRANSITION BETWEEN DEMOLITION AND THE EXISTING CEILING AND FLOOR FINISHES TO REMAIN WITH THE FLOOR PLAN.
 - 9 CAREFULLY REMOVE EXISTING DOOR AND FRAME AND MOVE TO NEW LOCATION IN ADJACENT WALL. REWORK DOOR AND FRAME TO CHANGE DIRECTION OF DOOR SWING.
 - 10 REMOVE EXISTING DOOR AND FRAME FROM EXISTING WALL TO REMAIN. PREPARE OLD OPENING FOR NEW-IN-FILL WORK PER FLOOR PLAN.
 - 11 REMOVE PORTION OF EXISTING WALL AS REQUIRED TO INSTALL NEW OPENING. COORDINATE EXACT LOCATION OF NEW OPENING WITH FLOOR PLAN AND CASEWORK ELEVATIONS.
 - 12 COORDINATE REMOVAL/RELOCATION OF EXISTING ELECTRICAL PANELS AND ASSOCIATED TRANSFORMER WITH THE ELECTRICAL DRAWINGS.
 - 13 REMOVE EXISTING DATA/TELEPHONE MOUNTING BOARD.
 - 14 COORDINATE FLOOR DEMOLITION AS REQUIRED TO INSTALL NEW FLOOR OUTLETS. COORDINATE WITH ELECTRICAL AND THE OWNER.
 - 15 CAREFULLY REMOVE PORTION OF EXISTING WALL FROM FLOOR TO 8'-0" AFF TO CREATE A NEW BULKHEAD. PREPARE WALL AND FLOORS FOR INSTALLATION OF NEW FINISHES. COORDINATE WITH FLOOR PLAN.



DEMO & CLG PLAN, DOOR SCHED, CASEWORK

REV#	DATE	DESCRIPTION	DRAWING NO.
			A2

MECHANICAL & ELECTRICAL DESIGN CONSULTANTS, INC.
1001 N. Fairbanks Green Road
Baltimore, MD 21105-1411
410-885-2622 Fax 410-885-0442
info@meedesign.com

Edward Schaub, Hobbs + Black Incorporated
255 S. Center Street
Baltimore, MD 21201-1144
410-528-0117
info@hobbsblack.com

InSync ARCHITECTURAL DESIGNS, INC.
PHONE: 410-557-9300
FAX: 410-557-2593
3637 JAKRETTVILLE PIKE
JAKRETTVILLE, MARYLAND 21094

TECHNICAL SERVICES FOR:
RMS LIFELINE
22201 Monroe, Suite
Detroit, Michigan