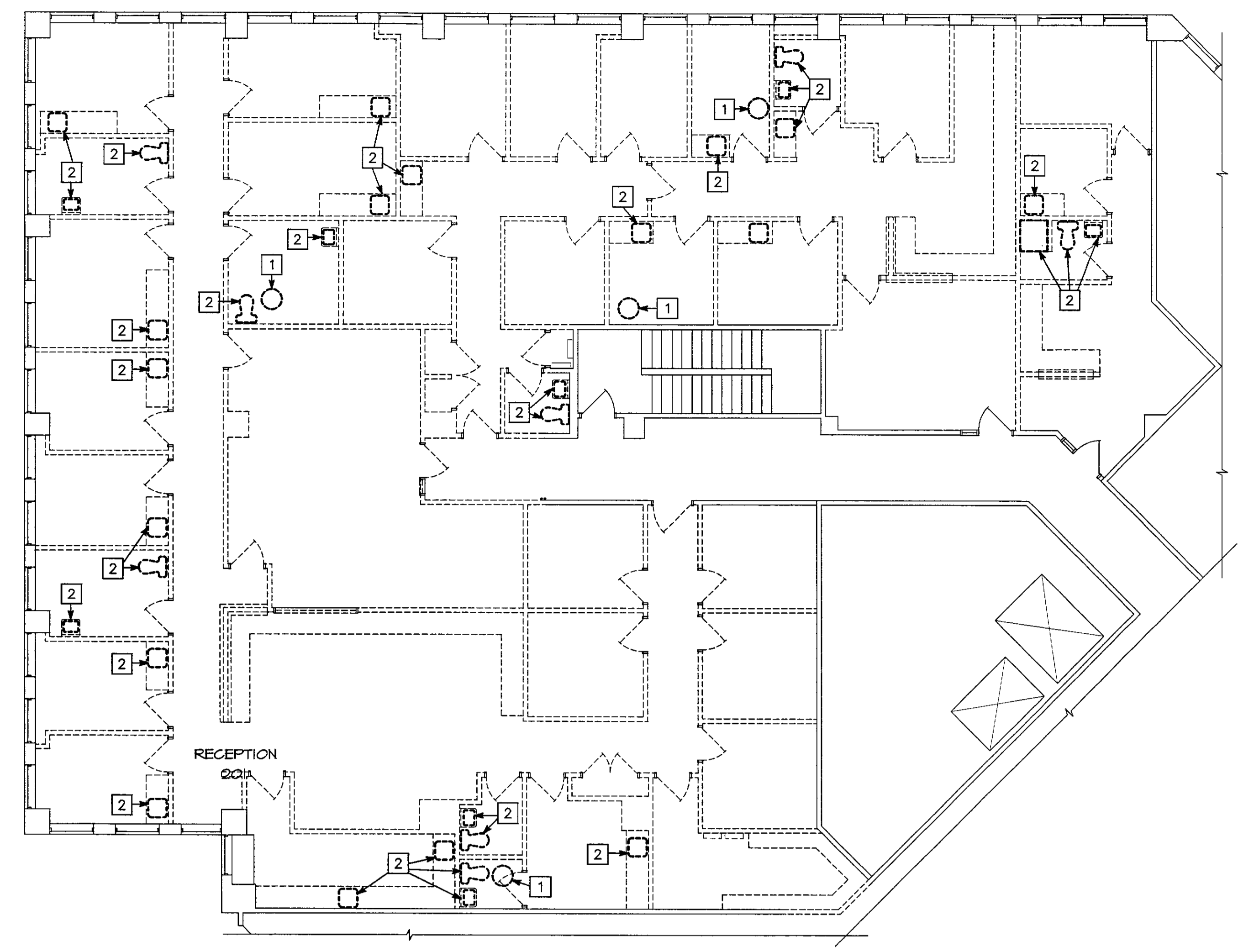


SECOND FLOOR PART PLAN-EXISTING CONDITIONS/NEW WORK (PLUMBING)
SCALE: 1/4"=1'-0"



SECOND FLOOR PART PLAN-EXISTING CONDITIONS/DEMOLITION (PLUMBING)
SCALE: 1/8"=1'-0"

DRAWING NOTES

- ① CONTRACTOR TO FIELD VERIFY/DETERMINE EXACT LOCATION OF EXISTING SANITARY LINE WITHIN FIRST FLOOR CEILING AND MAKE PROPER CONNECTION (TYPICAL).
- ② CONTRACTOR TO FIELD VERIFY/DETERMINE EXACT LOCATION OF EXISTING SANITARY VENT LINE WITHIN SECOND FLOOR CEILING AND MAKE PROPER CONNECTION (TYPICAL).
- ③ CONTRACTOR TO FIELD VERIFY/EXACT LOCATION OF EXISTING DOMESTIC COLD WATER LINE ABOVE SECOND FLOOR CEILING AND MAKE PROPER CONNECTION (TYPICAL).
- ④ SANITARY PIPE WITHIN FIRST FLOOR CEILING (TYPICAL).
- ⑤ DOMESTIC COLD WATER LINE SUPPORTED WITHIN SECOND FLOOR CEILING (TYPICAL).
- ⑥ DOMESTIC HOT WATER LINE SUPPORTED WITHIN SECOND FLOOR CEILING (TYPICAL).
- ⑦ 1/2" DOMESTIC HOT AND COLD WATER LINE DOWN IN WALL TO SERVE SINK (TYPICAL).

- ⑧ 3/4" DOMESTIC COLD WATER LINE DOWN IN WALL TO SERVE TOILET/HAND SINK AND 1/2" DOMESTIC HOT WATER LINE DOWN TO SERVE HAND SINK.
- ⑨ 3/4" DOMESTIC HOT AND COLD WATER LINE DOWN IN WALL TO JANITOR'S SINK (TYPICAL).
- ⑩ CLEANOUT WITHIN FIRST FLOOR CEILING.
- ⑪ 1/4" DOMESTIC COLD WATER DOWN WITHIN WALL TO SERVE P-4. COORDINATE EXACT LOCATION IN THE FIELD.
- ⑫ 1/4" DOMESTIC COLD WATER DOWN WITHIN WALL TO SERVE P-5. COORDINATE EXACT LOCATION IN THE FIELD.
- ⑬ BALL VALVE (TYPICAL).
- ⑭ 2" SANITARY VENT LINE UP AND 3" TO SANITARY LINE DOWN (TYPICAL).
- ⑮ 2" SANITARY VENT LINE UP AND 2" TO SANITARY LINE DOWN (TYPICAL).

- ⑯ SANITARY VENT LINE SUPPORTED WITHIN SECOND FLOOR CEILING (TYPICAL).
- ⑰ OUTLINE OF AIR HANDLING UNIT. REFER TO SHEET M-2 FOR MORE INFORMATION.
- ⑱ FACTORY INSTALLED CONDENSATE PUMP.
- ⑲ PUMPED CONDENSATE PIPE SUPPORTED WITHIN SECOND FLOOR CEILING.
- ⑳ ROUTE 3/4" CONDENSATE LINE DOWN FROM SECOND FLOOR CEILING ON WALL AND DISCHARGE WITHIN JANITOR'S SINK.
- ㉑ CONDENSATE PIPE CLEANOUT WITHIN SECOND FLOOR CEILING.
- ㉒ 30 GALLON ELECTRIC WATER HEATER MOUNTED ON FLOOR. REFER TO DETAIL ON SHEET M-4 FOR PIPING AND MOUNTING DETAIL. ALSO REFER TO SHEET M-5 FOR SIZE AND CAPACITY.
- ㉓ 6 GALLON ELECTRIC WATER HEATER MOUNTED ABOVE SECOND FLOOR. REFER TO DETAIL ON SHEET M-4 FOR PIPING AND MOUNTING DETAIL. ALSO REFER TO SHEET M-5 FOR SIZE AND CAPACITY.

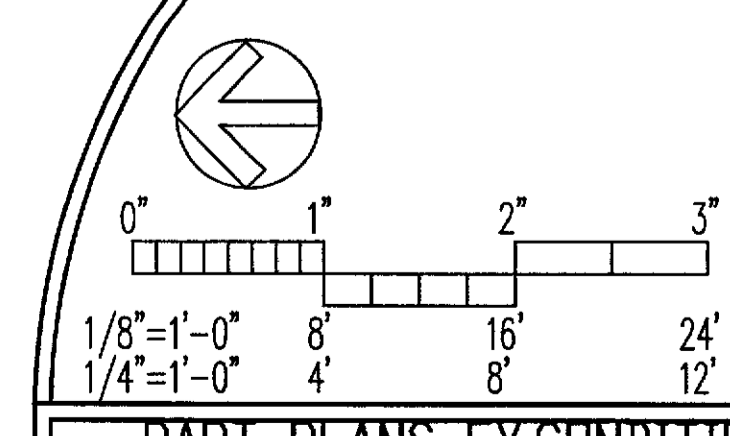
- ㉔ 1/2" DOMESTIC HOT AND COLD WATER LINE DOWN IN WALL TO SERVE P-2B NURSE WORK SINK. INSTALL A TempControl THERMOSTATIC TEMPERATURE CONTROLLER BELOW COUNTERTOP AS MANUFACTURED BY SYMONS, MODEL#S-200-W. LEAVING WATER TEMPERATURE NOT TO EXCEED 115°F.
- ㉕ 1/2" DOMESTIC COLD WATER LINE DOWN IN WALL TO SERVE P-1A.
- ㉖ CHECK VALVE (TYPICAL).
- ㉗ 3/4" DOMESTIC WATER LINE DOWN IN WALL TO SERVE TOILET.
- ㉘ 1" SANITARY CONNECTION FROM DISHWASHER TO AIR GAP ABOVE SINK. EXTEND 1" SANITARY CONNECTION FROM AIR GAP TO TAILPIECE OF SINK.
- ㉙ 1/2" DOMESTIC HOT WATER LINE DOWN IN WALL TO SERVE DISHWASHER.
- ㉚ 1/2" DOMESTIC COLD WATER LINE SUPPORTED WITHIN SECOND FLOOR CEILING FOR HUMIDIFIER CONNECTION.

DRAWING NOTES (DEMOLITION)

- 1** REMOVE EXISTING ELECTRIC WATER HEATER ABOVE CEILING AND TURNOVER TO THE TENANT OWNER/COORDINATOR. CONTRACTOR TO FIELD VERIFY/LOCATE EXISTING HOT AND COLD WATER LINE AND CAP ABOVE CEILING.
- 2** REMOVE EXISTING PLUMBING FIXTURE AND TURNOVER TO THE BUILDING TENANT OWNER/COORDINATOR. CONTRACTOR TO FIELD VERIFY/LOCATE EXISTING COLD/HOT WATER LINES AND CAP OFF IN CEILING ALONG WITH SANITARY VENT LINE. ALSO REMOVE SANITARY LINE DOWN TO AND CAP WITH FIRST FLOOR CEILING.

GENERAL NOTES

- 1) ALL ITEMS INDICATED BOLD SHALL BE CONSIDERED NEW UNLESS OTHERWISE NOTED.
- 2) ALL MANUFACTURES SHALL BE EQUAL TO THOSE INDICATED.
- 3) PVC PIPE WILL NOT BE PERMITTED ABOVE/WITHIN PLENUM CEILING.
- 4) PLUMBING ROUGH-IN CONNECTIONS ARE APPROXIMATE LOCATIONS. ALL ROUGH-IN CONNECTIONS TO BE COORDINATED IN THE FIELD BY THE PLUMBING CONTRACTOR.
- 5) MEDICAL GAS PIPE DESIGN DRAWINGS/INSTALLATION TO BE DONE BY A MEDICAL GAS TURNKEY COMPANY. PERMIT DRAWINGS FOR MEDICAL GAS BY OTHERS.
- 6) PLUMBING CONTRACTOR TO INSTALL SANITARY LINE WITHIN FIRST CEILING TO ALLOW FOR 1/8" PER FOOT SLOPE. CONTRACTOR TO PROVIDE THE NECESSARY FITTINGS TO ACCOMMODATE THE 1/8" SLOPE BELOW SLAB.
- 7) CONTRACTOR TO FIELD VERIFY EXISTING DOMESTIC WATER LINES SERVING THE REVISED TENANT SPACE AND COORDINATE/PROVIDE NEW WATER (SUS) METERS AS REQUIRED.



PART PLANS-EXISTING CONDITIONS/NEW WORK & DEMOLITION (PLUMBING)

REV	DATE	REVISIONS	DESCRIPTION

DRIVING NO. M3
3 OF 6
DATE 1/4/01
BY JLL
CHECKED BY GWR
1-100C

DON PENN ENGINEERS
CONSULTING
3860 HIGHWAY 380, SUITE 101
GRAPESVINE, TEXAS 76061
817-410-2668 FAX 817-261-9411

InSync ARCHITECTURAL DESIGNS, INC.
3837 JARRETTVILLE PIKE
JARRETTVILLE, MARYLAND
21084

REVISIONS TO:
RMS LIFELINE
DETROIT