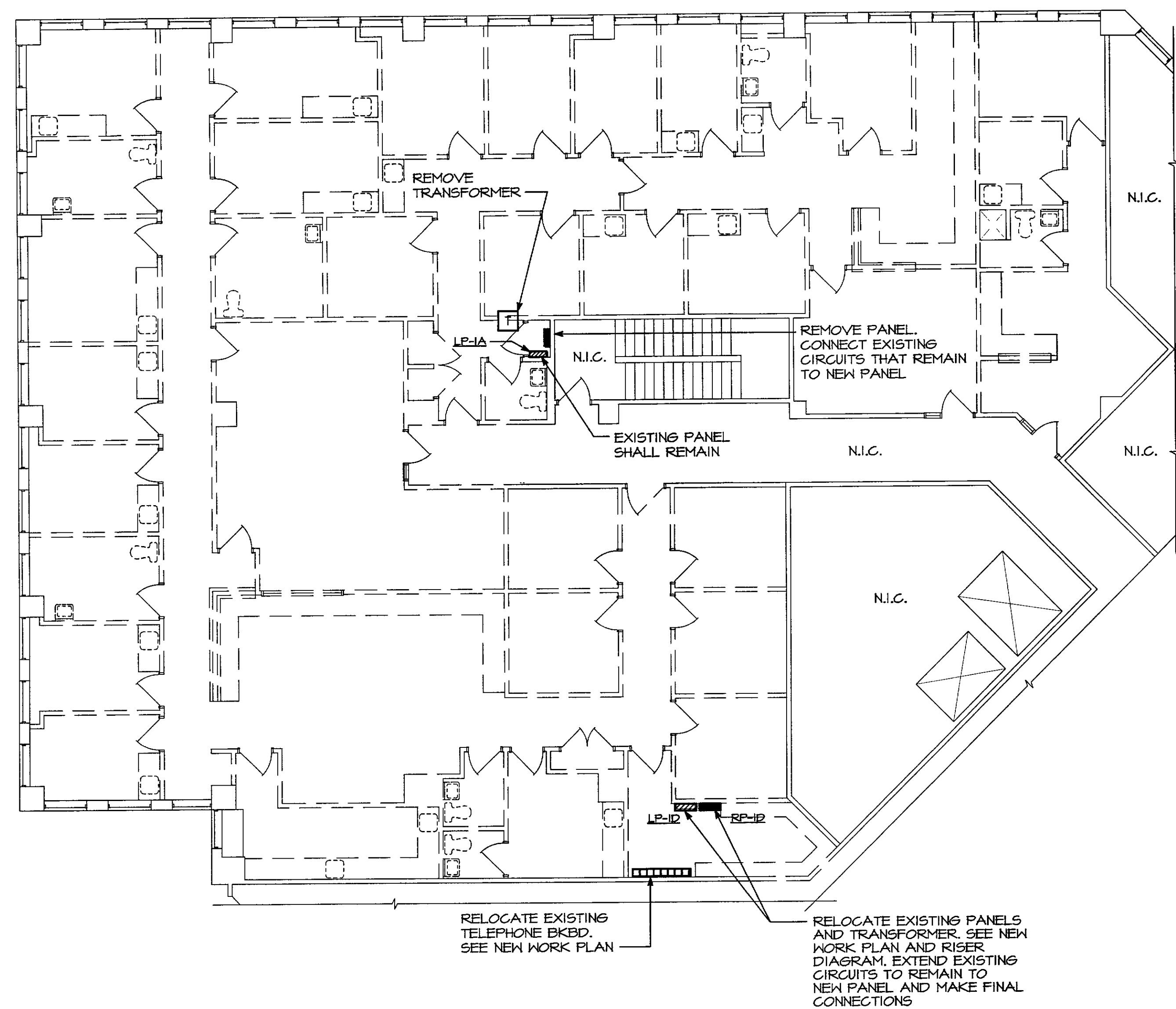


GENERAL NOTES

- A. ALL ELECTRICAL WORK SHALL BE IN ACCORDANCE WITH THE 1999 NATIONAL ELECTRICAL CODE AND ALL LOCAL CODES.
- B. CONNECT EXIT LIGHTS, EMERGENCY BATTERY UNITS AND NIGHT LIGHTS (NJ) TO UNSWITCHED PORTION OF LIGHTING CIRCUIT SERVING RESPECTIVE AREA.
- C. ALL WIRING SHALL BE COPPER, #12 AWG MINIMUM, TYPE THHN/THHN INSULATION, INSTALLED IN CONDUIT (1/2" MINIMUM). NO ROMEX OR BX CABLE PERMITTED. MC CABLE MAY BE USED, WHERE PERMITTED BY CODE, FOR WORK ABOVE CEILINGS AND CONCEALED IN WALLS.
- D. REFER TO ARCHITECTURAL REFLECTED CEILING PLANS FOR EXACT LOCATION OF LIGHTING FIXTURES AND GRID COORDINATION. VERIFY THAT ADEQUATE CLEARANCE FOR INSTALLATION, MAINTENANCE AND HEAT DISSIPATION IS AVAILABLE BEFORE ORDERING LIGHTING FIXTURES.
- E. ELECTRICAL CONTRACTOR SHALL VERIFY ALL VOLTAGES OF MECHANICAL EQUIPMENT WITH MECHANICAL CONTRACTOR PRIOR TO ROUGH-IN.
- F. THE WIRE SIZE INDICATED IN THE HOMERUN SHALL BE USED THROUGHOUT THE CIRCUIT.
- G. SEAL ALL CONDUIT PENETRATIONS THRU RATED WALLS AND FLOORS TO MAINTAIN FIRE INTEGRITY. REFER TO ARCHITECTURAL DRAWINGS FOR FIRE WALL LOCATIONS.
- H. ALL BRANCH CIRCUITS SHALL BE RUN CONCEALED IN EXISTING AND NEW WALLS. CUT AND PATCH EXISTING WALLS AND SURFACES AS REQUIRED.
- I. GROUND, PHASE AND NEUTRAL CONDUCTORS SHALL BE PIG-TAILED IN OUTLET BOXES OR MULTI-OUTLET ASSEMBLY FOR RECEPTACLES SO THAT GROUND AND ELECTRICAL SERVICE TO OTHER RECEPTACLES ON THE SAME MULTI-WIRE CIRCUIT WILL NOT BE DISTURBED IF A RECEPTACLE IS REMOVED.
- J. ELECTRICAL CONTRACTOR SHALL USE CONDULET SEALING FITTINGS WITH APPROVED SEALING COMPOUND ON ALL CONDUITS PASSING FROM INTERIOR TO EXTERIOR OF A BUILDING AND OF THE INTERFACE OF WIDELY DIFFERENT SPACE TEMPERATURE.
- K. CONTRACTOR SHALL USE HEALTH CARE FACILITY CABLING (HCF) IN ALL PATIENT CARE AREAS. COORDINATE THE PATIENT CARE AREAS WITH THE OWNER.
- L. PROVIDE HOSPITAL GRADE RECEPTACLES IN THE PATIENT CARE AREA PER NEC 517 AND AS DIRECTED BY LOCAL AUTHORITY HAVING JURISDICTION.
- M. ALL WORK SHALL BE IN COMPLIANCE OF NFPA 90 AND 91 IN THE AMBULATORY CARE PORTION OF THE TENANT SPACE.
- N. ELECTRICAL CONTRACTOR SHALL RELOCATE OR ADD FIRE ALARM DEVICES TO MEET THE FIRE MARSHALS APPROVAL.

DEMOLITION NOTES

- D1. ALL ACCESSIBLE ITEMS OF ELECTRICAL EQUIPMENT CONDUITS, WIRING, LIGHTS, RECEPTACLES, ETC. AFFECTED BY THE RENOVATION WORK AND NOT REQUIRED IN THE COMPLETED WORK SHALL BE CAREFULLY REMOVED. DAMAGED WALLS, FLOORS, CEILINGS, ETC. SHALL BE PATCHED AND FINISHED TO MATCH THE EXISTING ADJACENT SURFACES. REMOVED ITEMS SHALL BE PROPERLY DISPOSED OF OFF SITE AND NOT RE-USED EXCEPT AS NOTED. TURN OVER ALL EXISTING EQUIPMENT DESIRED BY BUILDING OWNER. ITEMS TO BE RE-USED SHALL BE CAREFULLY REMOVED AND STORED IN A PROTECTED AREA.
- D2. REMOVE EXISTING CIRCUITS IN PANELS NOT REQUIRED FOR COMPLETED WORK. UTILIZE EXISTING BREAKERS FOR NEW WORK SHOWN. PROVIDE NEW BREAKERS AS REQUIRED TO SERVE NEW CIRCUITS. LABEL ALL BREAKERS NOT USED AS SPARE.
- D3. RECONNECT CIRCUITS AS REQUIRED TO MAINTAIN CONTINUITY TO EXISTING DEVICES AND EQUIPMENT NOTED TO REMAIN AS WELL AS ADJACENT AREAS WHICH ARE NOT IN CONTRACT.
- D4. REMOVE CONDUIT AND WIRE BACK TO SOURCE.



FLOOR PLAN - DEMOLITION
SCALE: 1/8"=1'-0"

LIGHTING FIXTURE SCHEDULE

TYPE	LAMPS	MOUNTING	DESCRIPTION/VOLTAGE	CATALOG NO.
A	3-F32T8 3500K	RECESSED	2'x4' FLUORESCENT TROFFER WITH ACRYLIC PRISMATIC LENS AND ELECTRONIC BALLAST - 2TTV	LITHONIA #25FF 332 A12 2TT 6EB
AI	3-F32T8 3500K	RECESSED	2'x4' FLUORESCENT TROFFER WITH ACRYLIC PRISMATIC LENS AND ELECTRONIC BALLAST - 2TTV	LITHONIA #25FF 332 A12 2TT 6EB
B	3-F32T8 3500K	RECESSED	2'x4' FLUORESCENT TROFFER WITH 3" DEEP, 18 CELL, PARABOLIC LOUVER AND ELECTRONIC BALLAST - 2TTV	LITHONIA #2PM8GB 332 18LD 2TT 6EB
C	2-40W A19	SURFACE	INCANDESCENT WALL SCONCE - 120V	VISA LIGHTING CB4020 5AL
E	1-F32T8 CIRCLINE	SURFACE	FLUORESCENT CIRCLINE FIXTURE - 2TTV	LITHONIA #10R21
F	1-60W PAR20	TRACK	INCANDESCENT TRACK HEAD WITH WHITE FINISH - 120V	LITHONIA LTC FLTB PAR20 MB WH
G	1-26W TT	RECESSED	6" COMPACT FLUORESCENT DOWNLIGHT WITH WHITE FLANGE AND SPECULAR FINISH 2TTV	LITHONIA #LEPVR120M "X-RAY IN USE"
T1	-	SURFACE	SINGLE CIRCUIT TRACK WITH WHITE FINISH - 120V	LITHONIA #LT SERIES
T2	-	SURFACE	TWO CIRCUIT TRACK WITH WHITE FINISH - 120V	LITHONIA #L2T SERIES
X	LED	UNIVERSAL	LED "X-RAY" IN USE" SIGN WITH WHITE HOUSING, GREEN LETTERS - 120V	LITHONIA #LEPVR120M "X-RAY IN USE"
	LED	UNIVERSAL	LED EMERGENCY EXIT SIGN WITH WHITE HOUSING, GREEN LETTERS AND INTEGRAL BATTERY/CHARGER - 2TTV	LITHONIA #LGM SERIES
	2-8W HALOGEN	SURFACE	INCANDESCENT EMERGENCY BATTERY UNIT WITH INTEGRAL BATTERY/CHARGER AND WHITE FINISH - 2TTV	LITHONIA #6ELM2 SERIES

NOTE: LIGHT FIXTURES SHALL BE LITHONIA OR EQUAL

PANEL LP-1A LOAD SUMMARY

LOAD	CONNECTED KVA	DEMAND FACTOR	DEMAND KVA
LIGHTING	3.0	125%	4.75
RECEPTACLES	21.6	*	15.0
MOTORS	-	100%	-
ELECTRIC HEAT	-	100%	-
HEATING	**	100%	-
AIR CONDITIONING	**	100%	-
WATER HEATER	4.0	100%	4.0
TOTAL	34.4 KVA 41.4 AMPS		24.6 KVA 35.6 AMPS

- * FIRST 10.0 KVA AT 100%, BALANCE OF LOAD AT 50% KVA (NEC 220-13)
- ** HEATING AND AIR CONDITIONING ARE NON-SIMULTANEOUS LOAD
- *** ALL TRACK LIGHTING LOADS BASED ON 1999 NATIONAL ELECTRIC CODE OF 15 WATTS/LINEAR FOOT OF TRACK.

PANEL LP-1D LOAD SUMMARY

LOAD	CONNECTED KVA	DEMAND FACTOR	DEMAND KVA
LIGHTING	8.11	125%	10.2
RECEPTACLES	15.2	*	12.6
MOTORS	-	100%	-
ELECTRIC HEAT	1.0	100%	1.0
HEATING	**	100%	14.0
AIR CONDITIONING	**	100%	4.8
25% LARGEST MOTOR	.7	100%	.7
TOTAL (WINTER)	34.1 KVA 47.0 AMPS		38.5 KVA 46.4 AMPS

- * FIRST 10.0 KVA AT 100%, BALANCE OF LOAD AT 50% KVA (NEC 220-13)
- ** HEATING AND AIR CONDITIONING ARE NON-SIMULTANEOUS LOAD
- *** ALL TRACK LIGHTING LOADS BASED ON 1999 NATIONAL ELECTRIC CODE OF 15 WATTS/LINEAR FOOT OF TRACK.

NOTICE TO CONTRACTORS:

ALL CONTRACTORS PRIOR TO BID SUBMISSION PROCESS SHALL VISIT PROPOSED WORK SITE AND FIELD VERIFY ALL EXISTING CONDITIONS. ANY CONDITIONS THAT DIFFER FROM THAT SHOWN ON THIS PLAN SHALL BE REPORTED TO ARCHITECT/ENGINEER SO THAT NEW AND REVISED BID DRAWINGS OR INFORMATION MAY BE ISSUED. MODIFICATIONS TO SCOPE OF WORK WHICH RESULT FROM CONTRACTORS NEGLECT TO VISIT THE SITE PRIOR TO SUBMITTING BID, SHALL BE THE CONTRACTORS SOLE RESPONSIBILITY.

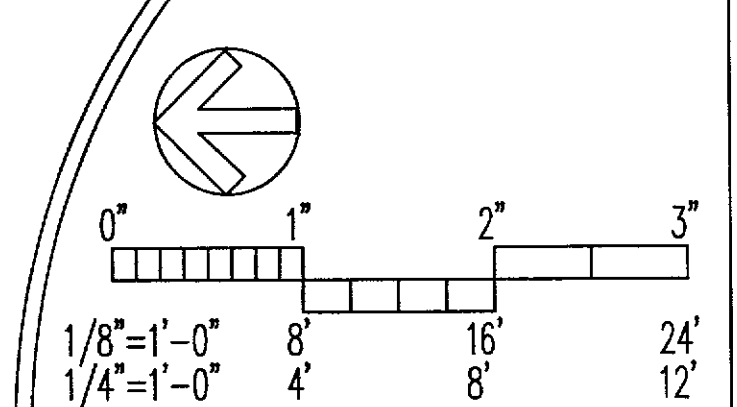
ELECTRICAL SYMBOLS LIST

NOTE: ALL MOUNTING HEIGHTS ARE TO CENTER LINE OF THE OUTLET BOX UNLESS OTHERWISE INDICATED.

- | SYMBOL | DESCRIPTION |
|--------|---|
| | FIXTURE - FLUORESCENT - CEILING, WALL, STRIP |
| | FIXTURE - INCANDESCENT - CEILING, WALL BRACKET |
| | FIXTURE - TRACK LIGHTING |
| | EXIT LIGHT - CEILING, WALL, WITH DIRECTIONAL ARROWS |
| | EMERGENCY BATTERY UNIT, REMOTE HEAD |
| | SWITCH - SINGLE POLE, THREEWAY, DIMMER - M.H. 3'-10" |
| | SWITCH - MOTOR RATED |
| | RECEPTACLE - 20A, 125 VOLTS - DUPLEX, DOUBLE DUPLEX - M.H. 1'-8" |
| | RECEPTACLE - 20A, 125 VOLTS - HOSPITAL GRADE - M.H. 1'-8" |
| | RECEPTACLE - 20A, 125 VOLTS - DUPLEX COUNTER HEIGHT |
| | SPECIAL RECEPTACLE AS NOTED |
| | OUTLET - TELEPHONE/DATA - M.H. 1'-8" |
| | OUTLET-TELEPHONE - M.H. 1'-8". "H" DENOTES WALL HUNG AT 60" |
| | OUTLET - DATA - M.H. 1'-8" |
| | TELEPHONE TERMINAL BACKBOARD |
| | PANELBOARD - 2TT/480 VOLTS - M.H. 6'-6" TO TOP |
| | PANELBOARD - 120/208 VOLTS - M.H. 6'-6" TO TOP |
| | DRY TYPE TRANSFORMER |
| | JUNCTION BOX |
| | DISCONNECT SWITCH - UNFUSED, FUSED - M.H. 5'-6" TO TOP |
| | CONTROL DEVICE BY EQUIPMENT CONTRACTOR |
| | MOTOR - SINGLE PHASE, THREE PHASE - HORSEPOWER AS NOTED |
| | HEATING ELEMENT - CAPACITY AS NOTED |
| | MOTOR OPERATED DAMPER |
| | GROUND CONNECTION |
| | BRANCH CIRCUIT - IN CEILING OR WALLS |
| | BRANCH CIRCUIT - IN FLOOR |
| | BRANCH CIRCUIT - EXPOSED ON CEILING OR WALLS |
| | HOMERUN TO PANEL - LETTER AND NO. INDICATES CIRCUIT NUMBER. NO. OF CROSSLINES INDICATES NO. OF CONDUCTORS WHEN MORE THAN 2. |
| | FIRE ALARM - PULL STATION M.H. 3'-10" |
| | FIRE ALARM - AUDIBLE SIGNAL AND VISUAL FLASHER |
| | FIRE ALARM - VISUAL FLASHER |
| | DRAWING NOTE |

ABBREVIATIONS

- | | |
|--------------------------------|---------------------------------|
| AFF - ABOVE FINISHED FLOOR | MTD - MOUNTED |
| CH - COUNTER HEIGHT | NEC - NATIONAL ELECTRIC CODE |
| DN - DOWN | NFSS - NON FUSED SAFETY SWITCH |
| DWG - DRAWING | NIC - NOT IN CONTRACT |
| EF - EXHAUST FAN | NL - NIGHT LIGHT |
| FLA - FULL LOAD AMPS | RX - REMOVE EXISTING |
| FSS - FUSED SAFETY SWITCH | U.O.N. - UNLESS OTHERWISE NOTED |
| GRD - GROUND | V - VOLTS |
| GFI - GROUND FAULT INTERRUPTER | WP - WEATHERPROOF |
| HP - HORSEPOWER | XFMR - TRANSFORMER |
| L.O. - LUGS ONLY | XR - EXISTING TO REMAIN |
| MH - MOUNTING HEIGHT | XTR - EXISTING TO BE RELOCATED |



SYMBOLS LIST AND NOTES

REV#	DATE	DESCRIPTION

REVISIONS	
DATE	
BY	
CHECKED BY	

DON PENN CONSULTING ENGINEERS
 3650 HIGHWAY 360, SUITE 701
 GRAPEVINE, TEXAS 76051
 817-402-2888 FAX 817-261-6411

InSync ARCHITECTURAL DESIGNS, INC.
 3837 JARRETTVILLE PIKE
 JARRETTVILLE, MARYLAND
 PHONE 410-557-9300
 FAX 410-557-2583
 21084

RENOVATIONS TO:
RMS LIFELINE
 DETROIT

DRAWING NO. **E1**
 SHEET 1 OF 5
 DATE 1/4/01
 DRAWN BY N.B.
 CHECKED BY
 1-100C
 TEF