

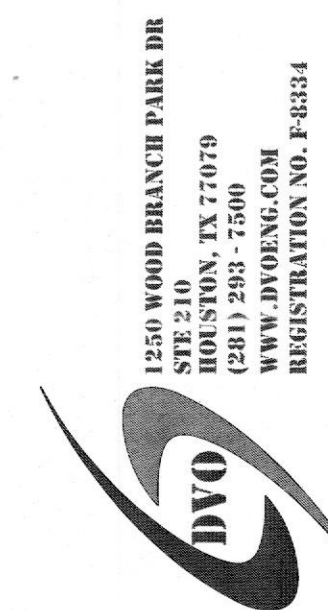
COMPUTED USER TEMP: PUBLISH 18744 PLUMBING.DWG: MBR_27_2018-706am_JHELGERSON

DVO PROJECT - 181054

DATE: 03/26/2018
JOB NO: 11247
DRAWN: JAH
CHECKED: WD



711 N. FIELDER RD.
ARLINGTON, TX 76012
PH: (817) 635-5696
FAX: (817) 635-5699



Lifeline Project Manager
In Sync
1213 Old Pylesville Road Whiteford, MD 21160
Office 410-452-8006 Fax 410-452-8046

**Vascular Surgery Center
of Central Arkansas**
11771 Maumelle Blvd
North Little Rock, AR 72113



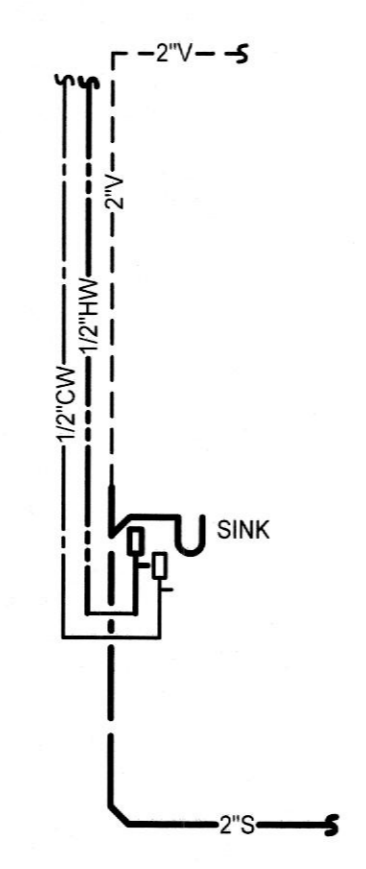
REVISIONS	
ISSUE FOR CONSTRUCTION	3/26/18
B-ISSUE	DATE
C-ISSUE	DATE
D-ISSUE	DATE
E-ISSUE	DATE
F-ISSUE	DATE

**PLUMBING
SCHEDULES & DETAILS**

SHEET NUMBER

P2.01

PLUMBING FIXTURE SCHEDULE		
MARK	DESCRIPTION / MANUFACTURER / MODEL	REMARKS
S-1	ELKAY SURGICAL SCRUB SINK, 2 STATION, WALL MOUNTED, KNEE OPERATED WATER VALVE WITH USED ADJUSTABLE WATER TEMPERATURE VALVE, #18 GAUGE STAINLESS STEEL, TYPE 304, SPOUT, COVERED CORNERS, LATCHED FRONT PANEL, WALL HANGER, FULL LENGTH BACKSPASH AND KNEE OPERATED SOAP PUMP, MODEL #EWSF26026KWSC	2 - CHROME BRASS, 8" REACH SPOUT WITH ADJ. SWIVEL SPRAY HEAD AND CONNECTION HOSES FOR THERMOSTATIC VALVE TO WATER VALVE AND WATER VALVE TO SPOUT 2 - LK18B STAINLESS STEEL PERFORATED STRAINER GRID, DRAIN WITH 1-1/2" OD X 4" STAINLESS STEEL TAILPIECE, INCLUDE INSULATION KIT FOR DRAIN AND INCLUDED TMV.



TYPICAL SINGLE SINK

01 TYPICAL PLUMBING RISERS
SCALE: NTS

A B C D E F G H