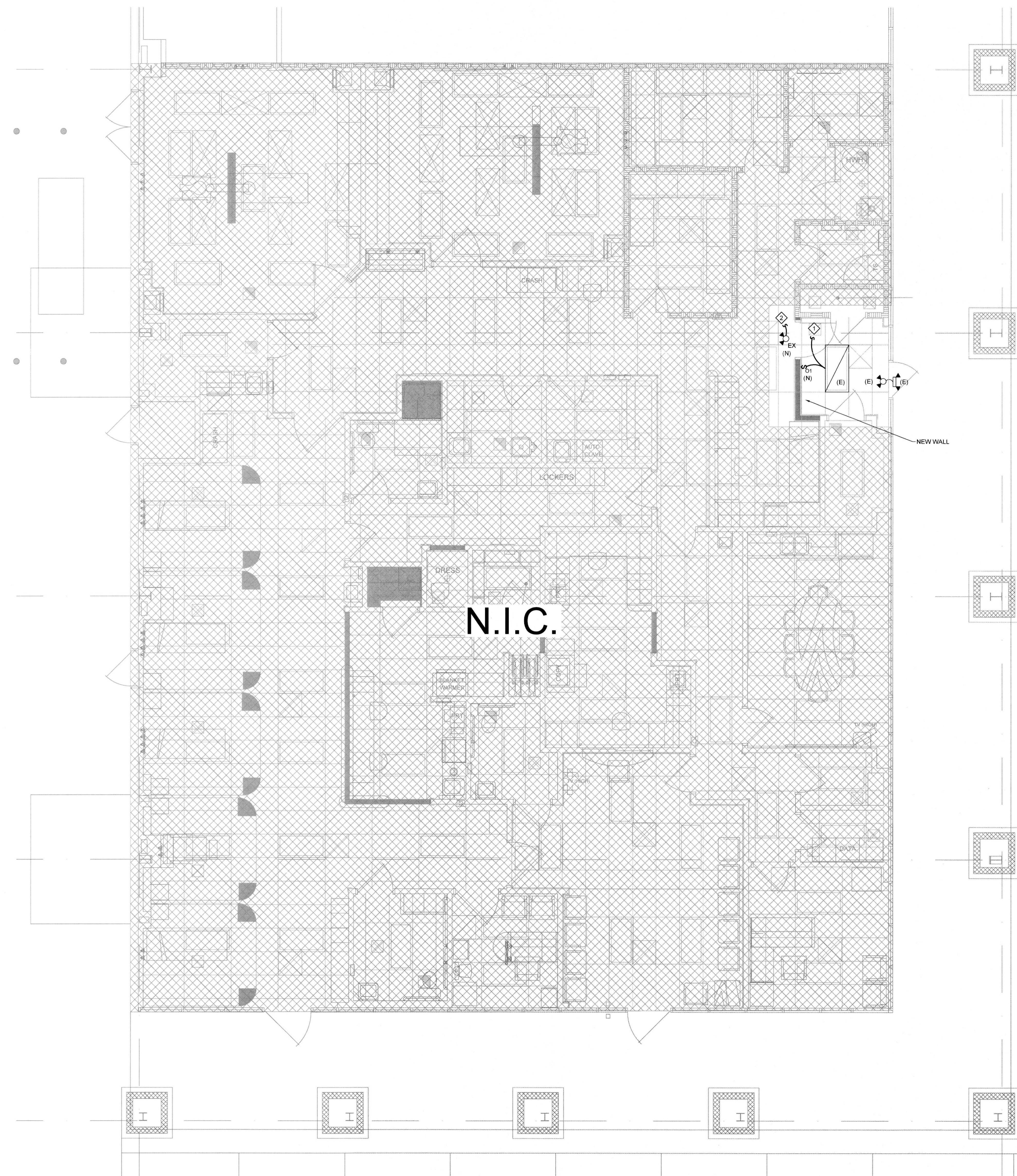


C:\AUTOCAD\USER\TEMP\AC\PLSH_3660\LIGHTING.DWG MAR. 27. 2018-5:54pm SHEREDITH



GENERAL LIGHTING NOTES:

- A. LUMINAIRES LABELED "(E)" ARE EXISTING TO REMAIN WHERE SHOWN UNLESS OTHERWISE NOTED. MAINTAIN CIRCUIT CONTINUITY FOR THESE DEVICES AS REQUIRED.
- B. ELECTRICAL CONTRACTOR SHALL INSPECT EXISTING AND RELOCATED FIXTURES IN WORK AREA. REPLACE ALL NECESSARY COMPONENTS, RELAMP AND CLEAN AS REQUIRED TO MAINTAIN LIKE-NEW LIGHT FIXTURE APPEARANCE. ENSURE THAT ALL LAMPS HAVE THE SAME COLOR RENDERING INDEX (CRI) AND COLOR TEMPERATURE (KELVIN), AND ARE OF CLIENT APPROVED MANUFACTURER THROUGHOUT THE AREA OF WORK. VERIFY LIGHT FIXTURE AND LAMP REQUIREMENTS WITH CLIENT PRIOR TO BEGINNING ANY WORK.
- C. LUMINAIRES SHALL BE FURNISHED AND INSTALLED WITH LAMPS, BALLAST(S), AND MOUNTING HARDWARE. ELECTRICAL CONTRACTOR SHALL SUBMIT FIXTURE CUT SHEETS TO CLIENT AND ARCHITECT FOR THEIR FINAL APPROVAL PRIOR TO ORDERING OF THE LUMINAIRES.
- D. ELECTRICAL CONTRACTOR SHALL COORDINATE LIGHTING FIXTURE QUANTITIES, MOUNTING REQUIREMENTS, FINISHES, FIXTURE AVAILABILITY AND LEAD TIME FOR DELIVERY TO SITE.
- E. LUMINAIRES THAT CONTAIN BALLAST(S) AND/OR LED DRIVERS THAT CAN BE SERVICED IN PLACE SHALL HAVE A DISCONNECTING MEANS PER NEC ARTICLE 410.130(G) REQUIREMENTS. DISCONNECTING MEANS IS NOT REQUIRED FOR EMERGENCY ILLUMINATION REQUIRED IN 700.16.
- F. COORDINATE LAYOUT AND INSTALLATION OF LUMINAIRES AND MOUNTING MEANS WITH OTHER CONSTRUCTION THAT IS SUPPORTED OR THAT PENETRATES CEILING, INCLUDING BUT NOT LIMITED TO HVAC EQUIPMENT, FIRE-SUPPRESSION SYSTEM, AND PARTITION ASSEMBLIES PRIOR TO BEGINNING ANY WORK. NOTIFY ENGINEER OF ANY CONFLICTS BETWEEN HVAC EQUIPMENT AND LOCATION OF LUMINAIRES. VERIFY CLEARANCES REQUIRED.
- G. ALL LUMINAIRES SHALL BE POSITIVELY ATTACHED TO THE SUSPENDED CEILING SYSTEM BY MECHANICAL MEANS. LISTED SUPPORT CLIPS, LISTED FOR USE WITH THE TYPE OF CEILING GRID MEMBER AND LUMINAIRE, ARE PERMITTED AT EACH FIXTURE CORNER. FIXTURES WEIGHING LESS THAN 50 POUNDS SHALL ALSO HAVE A MINIMUM OF TWO NO. 8 GAUGE WIRES CONNECTED FROM THE OPPOSITE CORNERS OF THE FIXTURE HOUSING TO STRUCTURE. FIXTURES ABOVE 50 POUNDS SHALL BE SUPPORTED DIRECTLY FROM THE STRUCTURE. FIXTURES OF SIZES LESS THAN CEILING GRID SHALL BE SUPPORTED INDEPENDENTLY WITH AT LEAST TWO 3/4-INCH LISTED METAL CHANNELS SPANNING AND SECURED TO CEILING TEES AND SUPPORTED WITH WIRES OR ROD TO BUILDING STRUCTURE.
- H. ALL LUMINAIRES AND FLEXIBLE WIRING WHIPS SHALL BE SUPPORTED INDEPENDENTLY OF THE GRID SUPPORT SYSTEM.
- I. ELECTRICAL CONTRACTOR SHALL PURCHASE ANY ADDITIONAL LUMINAIRES REQUIRED, DUE TO DAMAGE OR CLIENT REQUEST. MATCH EXISTING LUMINAIRES IN THE AREA.
- J. MOUNT MULTIPLE LIGHT SWITCHES IN A MULTIPLE GANG BOX WITH SINGLE COVER PLATE.
- K. MULTIWIRE BRANCH CIRCUITS SHALL BE PROVIDED WITH A SIMULTANEOUS DISCONNECTING MEANS TO DISCONNECT ALL UNGROUNDED CONDUCTORS AT THE POINT OF ORIGIN. DISCONNECTION CAN BE ACCOMPLISHED THROUGH LISTED HANDLE TIES USED WITH SINGLE-POLE CIRCUIT BREAKERS OR MULTI-POLE DEVICES. BRANCH CIRCUIT(S) SERVING EMERGENCY LIGHTING SHALL NOT BE PART OF A MULTI-WIRE BRANCH CIRCUIT.
- L. GROUNDED AND UNGROUNDED CONDUCTORS OF EACH MULTI-WIRE BRANCH CIRCUIT SHALL BE GROUPED WITH WIRE TIES OR SIMILAR MEANS AT A MINIMUM OF ONE LOCATION WITHIN THE PANELBOARD OR OTHER POINT OF ORIGIN.
- M. SWITCHES CONTROLLING LIGHTING LOADS WHERE SWITCHES CONTROL LIGHTING LOADS SUPPLIED BY A GROUNDED GENERAL PURPOSE BRANCH CIRCUIT, THE GROUNDED CIRCUIT CONDUCTOR (NEUTRAL WIRE) FOR THE CONTROLLED LIGHTING CIRCUIT SHALL BE PROVIDED AT THE SWITCH LOCATION. EXISTING SWITCHES IN REMODELED SPACES SHALL NOT BE EXEMPT FROM THIS REQUIREMENT.
- N. WHERE DIMMING CONTROL IS SPECIFIED AS A PORTION OF A CIRCUIT THAT ALSO HAS SWITCHED LIGHTING IN ADJACENT SPACES, PROVIDE A SEPARATE, DEDICATED NEUTRAL WIRE FROM THE DIMMING DEVICE BACK TO THE ORIGINATING PANEL.
- O. IN REMODEL AREAS WHERE OCCUPANCY SENSING DEVICES ARE SPECIFIED AND ARE REPLACING EXISTING MANUAL SNAP SWITCH CONTROL OF THE LIGHTING, PROVIDE A NEUTRAL CONDUCTOR FROM THE LIGHTING CIRCUIT BEING CONTROLLED TO THE OCCUPANCY SENSING DEVICE (OR SWITCHPOWER PACK, WHERE LOW VOLTAGE SENSORS ARE SPECIFIED). FOR BIDDING PURPOSES, ASSUME THAT THE EXISTING SNAP SWITCHES ARE WIRED WITHOUT A NEUTRAL CONDUCTOR, AND A NEW NEUTRAL CONDUCTOR WILL BE REQUIRED.
- P. ALL SWITCHES SHALL BE LABELED WITH DESIGNATED PANEL AND CIRCUIT NUMBER(S) ON THE COVER PLATE.
- Q. PROVIDE AN UNSWITCHED HOT AT EACH NEW EXIT SIGN. EMERGENCY LIGHTING SHALL BE SUPPLIED WITH A BATTERY TO SUPPLY AND MAINTAIN EMERGENCY LIGHTING LEVELS FOR A MINIMUM PERIOD OF 90 MINUTES.
- R. EXIT SIGNS SHALL BE CONNECTED TO THE THE NORMAL LIGHTING CIRCUIT IN THE AREA AND CONNECTED AHEAD OF ANY CONTROLS.
- S. ALL EXIT SIGNS ARE EXISTING. LOCATIONS OF EXIT SIGNS SHALL BE COORDINATED WITH LIFE SAFETY DRAWINGS AND LOCAL AUTHORITIES. PROVIDE SIGNS IN ADDITIONAL LOCATIONS, IF REQUIRED, BY LOCAL AUTHORITIES. MATCH ANY NEW FIRE DEPARTMENT REQUIRED EXIT SIGNS WITH EXISTING.
- T. MOUNT NEW WALL SWITCHES AT 48" TO BOX CENTERLINE ABOVE FINISHED FLOOR (A.F.F.) TO COMPLY WITH ADA STANDARDS.
- U. ELECTRICAL CONTRACTOR SHALL TEST BATTERIES IN ALL REUSED OR EXISTING EXIT SIGNS, EMERGENCY LIGHT UNITS, AND EMERGENCY FLUORESCENT LUMINAIRES. REPLACE BATTERIES, UNITS, OR BALLASTS IF REQUIRED.

KEYED NOTES:

- 1. NO NEW LIGHTING CIRCUITS REQUIRED. LUMINAIRE IS CURRENTLY CONTROLLED VIA CORRIDOR OCCUPANCY SENSOR. ELECTRICAL CONTRACTOR TO REMOVE LUMINAIRE FROM CORRIDOR SWITCH LEG AND RECONNECT EXISTING LUMINAIRE TO SAME LIGHTING CIRCUIT AND NEW WALL MOUNTED OCCUPANCY SENSOR AS SHOWN. MATCH EXISTING WALL MOUNTED OCCUPANCY SENSORS IN TENANT SPACE. WATTSTOPPER CAT# DW-100 PER EXISTING DRAWINGS. PROVIDE JUNCTION BOXES, CONDUITS, CONDUCTORS, AND ADDITIONAL ELECTRICAL EQUIPMENT TO REWORK/EXTEND EXISTING WIRING IN CONFIGURATION SHOWN. DETERMINE LOAD FOR AFFECTED CIRCUIT(S) AND NOTIFY ENGINEER IF LOAD EXCEEDS 80% OF CIRCUIT AMPACITY.
- 2. NO NEW LIGHTING CIRCUITS REQUIRED. ELECTRICAL CONTRACTOR TO CONNECT NEW EXIT SIGN TO EXISTING CORRIDOR LIGHTING CIRCUIT. PROVIDE JUNCTION BOXES, CONDUITS, CONDUCTORS AND ADDITIONAL ELECTRICAL EQUIPMENT TO REWORK/EXTEND EXISTING WIRING IN CONFIGURATION SHOWN. DETERMINE LOAD FOR AFFECTED CIRCUIT(S) AND NOTIFY ENGINEER IF LOAD EXCEEDS 80% OF CIRCUIT AMPACITY.

DATE: 03/26/2018
 JOB NO: 11247
 DRAWN: SM
 CHECKED: JF

CORTLAND MORGAN ARCHITECT
 7111 N. FIELDER RD.
 ARLINGTON, TX 76012
 PH: (817) 635-6696
 FAX: (817) 635-6699

12501 WOOD BRANCH PARK DR
 HOUSTON, TX 77079
 (281) 291-7500
 REGISTRATION NO. 8-3234

DVO

LifeLine Project Manager
 In Sync
 Whiteford, MD 21160
 12,13 Old Pylesville Road
 Office 410-462-8006 Fax 410-462-8046

Vascular Surgery Center
 of Central Arkansas
 11771 Maumelle Blvd
 North Little Rock, AR 72113



REVISIONS

ISSUE FOR CONSTRUCTION	DATE
B-ISSUE	DATE
C-ISSUE	DATE
D-ISSUE	DATE
E-ISSUE	DATE
F-ISSUE	DATE

LIGHTING FLOOR PLAN

SHEET NUMBER

E1.01

LUMINAIRE SCHEDULE							
MARK	MANUFACTURER AND MODEL	VOLTAGE	LAMPS	INPUT WATTAGE	MOUNTING	DESCRIPTION	NOTES
EX	LITHONIA LIGHTING: LHM-LED--HO-SD	UNV	LED	5	SURFACE	WHITE LED EXIT SIGN/EMERGENCY EGRESS FIXTURE W/LOCAL CODE COMPLIANT LETTER COLOR AND BATTERY BACK-UP	1

01 LIGHTING FLOOR PLAN
 SCALE: 1/4"=1'-0"

DVO PROJECT - 181054