



713 N. FIELDER RD.  
 ARLINGTON, TX 76012  
 PH: (817) 635-5696  
 FAX: (817) 635-5699

655 Westport Parkway  
 Grapevine, Texas 76051  
 Phone: 817-410-2858  
 Fax: 817-251-9411

**d p c e**  
 don penn consulting engineer

Lifeline Project Manager  
**In Sync**  
 Whiteford, MD 21150  
 Office 410-462-8003 Fax 410-462-8046

**ACCESS CENTER  
 LIFELINE**  
 11771 Maumelle Blvd  
 North Little Rock, AR 72115



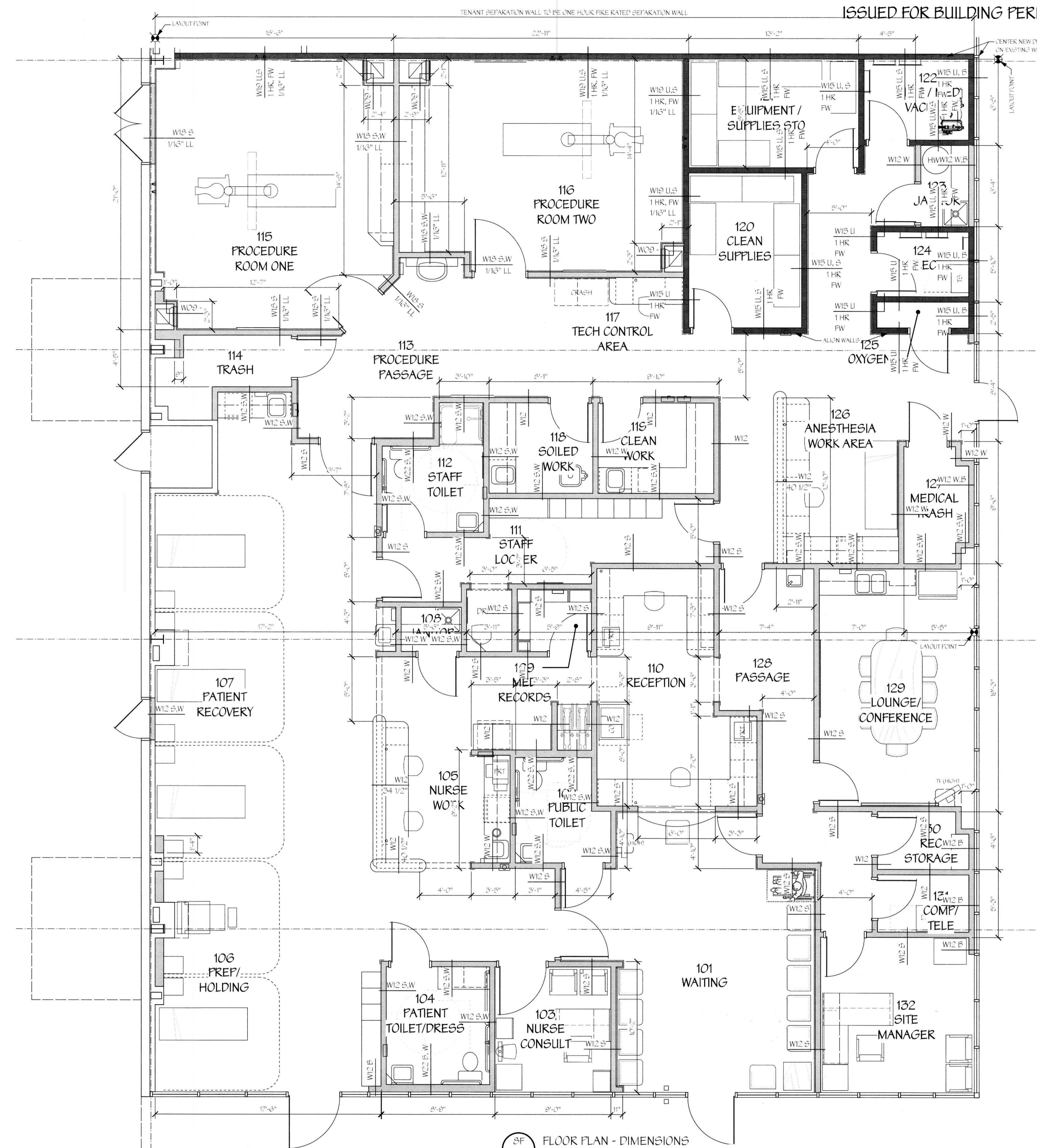
REVISIONS

A	ISSUE	DATE
B	ISSUE	DATE
C	ISSUE	DATE
D	ISSUE	DATE
E	ISSUE	DATE
F	ISSUE	DATE

DIMENSION PLAN AND  
 WALL SCHEDULE

SHEET NUMBER

**A2**



**SF FLOOR PLAN - DIMENSIONS**  
 Scale: 1/4" = 1'-0"

**SF MOUNTING HEIGHTS AND FRP DETAILS**  
 Scale: 1/2" = 1'-0"

**WALL TYPES:**

WALL TYPE	CONSTRUCTION
W10	1 1/2" MTL FLURKING @ 12" OC
W11	5/8" GYPSUM WALL BOARD
W12	3-5/8" MTL STUDS @ 12" OC
W13	5/8" GYPSUM WALL BOARD
W14	5/8" FIRE RATED GWP
W15	5/8" FIRE RATED GWP
W16	5/8" FIRE RATED GWP
W17	5/8" FIRE RATED GWP
W18	5/8" FIRE RATED GWP
W19	5/8" FIRE RATED GWP
W20	5/8" FIRE RATED GWP
W21	5/8" FIRE RATED GWP
W22	5/8" FIRE RATED GWP
W23	5/8" FIRE RATED GWP
W24	5/8" FIRE RATED GWP
W25	5/8" FIRE RATED GWP
W26	5/8" FIRE RATED GWP
W27	5/8" FIRE RATED GWP
W28	5/8" FIRE RATED GWP
W29	5/8" FIRE RATED GWP
W30	5/8" FIRE RATED GWP
W31	5/8" FIRE RATED GWP
W32	5/8" FIRE RATED GWP
W33	5/8" FIRE RATED GWP
W34	5/8" FIRE RATED GWP
W35	5/8" FIRE RATED GWP
W36	5/8" FIRE RATED GWP
W37	5/8" FIRE RATED GWP
W38	5/8" FIRE RATED GWP
W39	5/8" FIRE RATED GWP
W40	5/8" FIRE RATED GWP
W41	5/8" FIRE RATED GWP
W42	5/8" FIRE RATED GWP
W43	5/8" FIRE RATED GWP
W44	5/8" FIRE RATED GWP
W45	5/8" FIRE RATED GWP
W46	5/8" FIRE RATED GWP
W47	5/8" FIRE RATED GWP
W48	5/8" FIRE RATED GWP
W49	5/8" FIRE RATED GWP
W50	5/8" FIRE RATED GWP
W51	5/8" FIRE RATED GWP
W52	5/8" FIRE RATED GWP
W53	5/8" FIRE RATED GWP
W54	5/8" FIRE RATED GWP
W55	5/8" FIRE RATED GWP
W56	5/8" FIRE RATED GWP
W57	5/8" FIRE RATED GWP
W58	5/8" FIRE RATED GWP
W59	5/8" FIRE RATED GWP
W60	5/8" FIRE RATED GWP
W61	5/8" FIRE RATED GWP
W62	5/8" FIRE RATED GWP
W63	5/8" FIRE RATED GWP
W64	5/8" FIRE RATED GWP
W65	5/8" FIRE RATED GWP
W66	5/8" FIRE RATED GWP
W67	5/8" FIRE RATED GWP
W68	5/8" FIRE RATED GWP
W69	5/8" FIRE RATED GWP
W70	5/8" FIRE RATED GWP
W71	5/8" FIRE RATED GWP
W72	5/8" FIRE RATED GWP
W73	5/8" FIRE RATED GWP
W74	5/8" FIRE RATED GWP
W75	5/8" FIRE RATED GWP
W76	5/8" FIRE RATED GWP
W77	5/8" FIRE RATED GWP
W78	5/8" FIRE RATED GWP
W79	5/8" FIRE RATED GWP
W80	5/8" FIRE RATED GWP
W81	5/8" FIRE RATED GWP
W82	5/8" FIRE RATED GWP
W83	5/8" FIRE RATED GWP
W84	5/8" FIRE RATED GWP
W85	5/8" FIRE RATED GWP
W86	5/8" FIRE RATED GWP
W87	5/8" FIRE RATED GWP
W88	5/8" FIRE RATED GWP
W89	5/8" FIRE RATED GWP
W90	5/8" FIRE RATED GWP
W91	5/8" FIRE RATED GWP
W92	5/8" FIRE RATED GWP
W93	5/8" FIRE RATED GWP
W94	5/8" FIRE RATED GWP
W95	5/8" FIRE RATED GWP
W96	5/8" FIRE RATED GWP
W97	5/8" FIRE RATED GWP
W98	5/8" FIRE RATED GWP
W99	5/8" FIRE RATED GWP
W100	5/8" FIRE RATED GWP

**CONCEALED PARTITION MARKINGS:**

ONE HOUR FIRE WALLS: [Symbol]

CONCEALED PARTITION MARKINGS: [Symbol]

NOTE: CONTRACTOR AND SUB-CONTRACTORS SHALL VISIT THIS BUILDING AND TENANT AREA AND BE FAMILIAR WITH ALL THE EXISTING CONDITIONS PRIOR TO CONTRACT AWARD