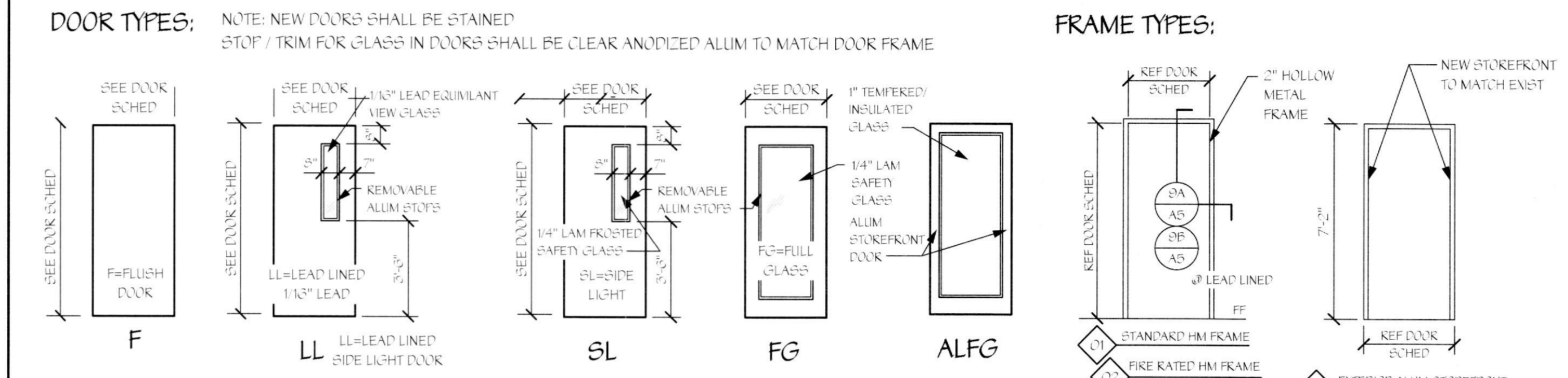


**DOOR AND FRAME SCHEDULE:**

Frame #	Door Width	Door Ht	Door Thick	Door Type	Door Mat	Door Fin	Lock	Frame Type	Frame Mat	Frame Depth	Hardware	Fire Rating	Remark
101	2'-0"	7'-0"	1-3/4"	SL	ALUM	MATCH EX	-	A	ALUM	ENST	A	-	MATCH EX
102	2'-0"	7'-0"	1-3/4"	SL	SC-WD	STAINED	-	O1	HM	5'-7 1/2"	B	-	FRUSTED GLASS, OTHER FULL SIDE
103	2'-0"	7'-0"	1-3/4"	SL	SC-WD	STAINED	-	O1	HM	5'-7 1/2"	B	-	FRUSTED GLASS, OTHER FULL SIDE
104	2'-0"	7'-0"	1-3/4"	F	SC-WD	STAINED	-	O1	HM	5'-7 1/2"	F	-	UNDERCUT IT
105	2'-0"	7'-0"	1-3/4"	F	SC-WD	STAINED	-	O1	HM	5'-7 1/2"	F	-	UNDERCUT IT
106	2'-0"	7'-0"	1-3/4"	F	SC-WD	STAINED	-	O1	HM	5'-7 1/2"	F	-	UNDERCUT IT
107	2'-0"	7'-0"	1-3/4"	F	SC-WD	STAINED	-	O1	HM	5'-7 1/2"	F	-	UNDERCUT IT
108	2'-0"	7'-0"	1-3/4"	F	SC-WD	STAINED	-	O1	HM	5'-7 1/2"	F	-	UNDERCUT IT
109	2'-0"	7'-0"	1-3/4"	F	SC-WD	STAINED	-	O1	HM	5'-7 1/2"	F	-	UNDERCUT IT
110	2'-0"	7'-0"	1-3/4"	F	SC-WD	STAINED	-	O1	HM	5'-7 1/2"	F	-	UNDERCUT IT
111	2'-0"	7'-0"	1-3/4"	F	SC-WD	STAINED	-	O1	HM	5'-7 1/2"	F	-	UNDERCUT IT
112	2'-0"	7'-0"	1-3/4"	F	SC-WD	STAINED	-	O1	HM	5'-7 1/2"	F	-	UNDERCUT IT
113	2'-0"	7'-0"	1-3/4"	F	SC-WD	STAINED	-	O1	HM	5'-7 1/2"	F	-	UNDERCUT IT
114	2'-0"	7'-0"	1-3/4"	F	SC-WD	STAINED	-	O1	HM	5'-7 1/2"	F	-	UNDERCUT IT
115	4'-0"	7'-0"	1-3/4"	LL	SC-WD	STAINED	-	O5	HM	5'-7 1/2"	H	-	1 1/2" LEAD LINED CK FRAME
116	4'-0"	7'-0"	1-3/4"	LL	SC-WD	STAINED	-	O5	HM	5'-7 1/2"	H	-	1 1/2" LEAD LINED CK FRAME
117	2'-0"	7'-0"	1-3/4"	F	SC-WD	STAINED	-	O1	HM	5'-7 1/2"	F	-	UNDERCUT IT
118	2'-0"	7'-0"	1-3/4"	F	SC-WD	STAINED	-	O1	HM	5'-7 1/2"	F	-	UNDERCUT IT
119	2'-0"	7'-0"	1-3/4"	F	SC-WD	STAINED	-	O1	HM	5'-7 1/2"	F	-	UNDERCUT IT
120	2'-0"	7'-0"	1-3/4"	F	SC-WD	STAINED	-	O1	HM	5'-7 1/2"	F	-	UNDERCUT IT
121	2'-0"	7'-0"	1-3/4"	F	SC-WD	STAINED	-	O1	HM	5'-7 1/2"	F	-	UNDERCUT IT
122	2'-0"	7'-0"	1-3/4"	F	SC-WD	STAINED	-	O1	HM	5'-7 1/2"	F	-	UNDERCUT IT
123	2'-0"	7'-0"	1-3/4"	F	SC-WD	STAINED	-	O1	HM	5'-7 1/2"	F	-	UNDERCUT IT
124	2'-0"	7'-0"	1-3/4"	F	SC-WD	STAINED	-	O1	HM	5'-7 1/2"	F	-	UNDERCUT IT
125	2'-0"	7'-0"	1-3/4"	F	SC-WD	STAINED	-	O1	HM	5'-7 1/2"	F	-	UNDERCUT IT
126	2'-0"	7'-0"	1-3/4"	F	SC-WD	STAINED	-	O1	HM	5'-7 1/2"	F	-	UNDERCUT IT
127	2'-0"	7'-0"	1-3/4"	F	SC-WD	STAINED	-	O1	HM	5'-7 1/2"	F	-	UNDERCUT IT
128	2'-0"	7'-0"	1-3/4"	F	SC-WD	STAINED	-	O1	HM	5'-7 1/2"	F	-	UNDERCUT IT
129	2'-0"	7'-0"	1-3/4"	F	SC-WD	STAINED	-	O1	HM	5'-7 1/2"	F	-	UNDERCUT IT
130	2'-0"	7'-0"	1-3/4"	F	SC-WD	STAINED	-	O1	HM	5'-7 1/2"	F	-	UNDERCUT IT
131	2'-0"	7'-0"	1-3/4"	F	SC-WD	STAINED	YES	O1	HM	5'-7 1/2"	C	-	2 LOCKERS-12"x24" TOP BOT
132	2'-0"	7'-0"	1-3/4"	F	SC-WD	STAINED	-	O1	HM	5'-7 1/2"	C	-	

GENERAL NOTE:  
ALL DOORS AND DOOR  
HARDWARE SHALL COMPLY WITH  
SECTION 404 OF ICC/ANSI 107.1

GENERAL NOTE:  
ALL DOOR HARDWARE SHALL BE  
INSTALLED IN ACCORDANCE  
WITH ADA AND ANCI  
RECOMMENDATIONS. LEVER  
LOCKS SHALL BE  
INSTALLED WITH CENTER OF  
LEVEL HANDLES AT 36" AFF.



**HARDWARE TYPES:**  
GENERAL HARDWARE NOTE: ALL COMPONENTS OF HARDWARE SHALL BE PROVIDED FOR A COMPLETELY FUNCTIONING HARDWARE INSTALLATION. ALL COMPONENTS SHALL COMPLY WITH LOCAL, STATE AND FEDERAL (ADA) DISABILITY REQUIREMENTS. ALL EXCESS DOORS SHALL BE READY OBTAINABLE FROM THE SIDE FROM WHICH EXCESS IS TO BE MADE WITHOUT A KEY OR SPECIAL KNOWLEDGE OR EFFORT. NEW DOORS SHALL BE KEED TO MATCH THE EXISTING TENANT AND BUILDING KEYS SYSTEM.

ALL LOCKSETS SHALL BE EQUAL TO THE D SERIES, LEVER HANDLE LOCKSETS (18250 FINISH) BY SCHLAGE, ATHENS LEVER DESIGN AND FULL SIZE INTERCHANGEABLE CORES. HARDWARE SHALL BE INSTALLED PER MANUFACTURER'S RECOMMENDATIONS FOR THE VARIOUS CONDITIONS ENCOUNTERED.

**TYPE "A":** PROVIDE STOREFRONT MANUFACTURER'S STANDARD HARDWARE FOR A COMPLETE INSTALLATION TO INCLUDE DEADLATCH HANDLES / CYLINDER EQUAL TO 4520 BY ADAMS RITE, ELECTRIC STRIKE EQUAL TO THE 5000 ELECTRIC STRIKE SERIES BY HES INNOVATIONS, HINGES, DOOR STOP, FLUSH/FULL DOOR HARDWARE, FULL WEATHER-STRIPPING AND ADA APPROVED ALUMINUM THRESHOLD. INSTALL PER MANUFACTURER'S RECOMMENDATIONS. PROVIDE MAND-FORCE AUTOMATIC POWER OPENER BY STANLEY. COORDINATE TIMING WITH OWNER. REFER TO FLOOR PLAN FOR REQUIRED CONTROL PADDLE LOCATIONS AND TO DETAIL 50744 FOR DOOR CONTROL DIAGRAM / REQUIREMENTS.

**TYPE "B":** OTHER LOCK EQUAL TO TRILOCK 2275 BY ALARM LOCK. LOCK SHALL BE PROVIDED WITH PASSAGE MODE FUNCTION. CORBIN DC3200 SERIES SURFACE APPLIED DELAYED ACTION DOOR CLOSER (COORDINATE TIMING WITH OWNER). 4 1/2" BUTT HINGES (MINIMUM 3 PER LEAF) BY STANLEY, WALL STOP BY ROCKWOOD.

**TYPE "C":** FUNCTION ND507 (OFFICE FUNCTION). 4 1/2" BUTT HINGES (MINIMUM 3 PER LEAF) BY STANLEY, WALL STOP BY ROCKWOOD.

**TYPE "D":** FUNCTION ND105 (PASSAGE FUNCTION). 4 1/2" BUTT HINGES (MINIMUM 3 PER LEAF) BY STANLEY, WALL STOP BY ROCKWOOD.

**TYPE "E":** FUNCTION ND507 (OFFICE FUNCTION). CORBIN DC3200 SERIES SURFACE APPLIED DOOR CLOSER, 4 1/2" BUTT HINGES (MINIMUM 3 PER LEAF) BY STANLEY, WALL STOP BY ROCKWOOD.

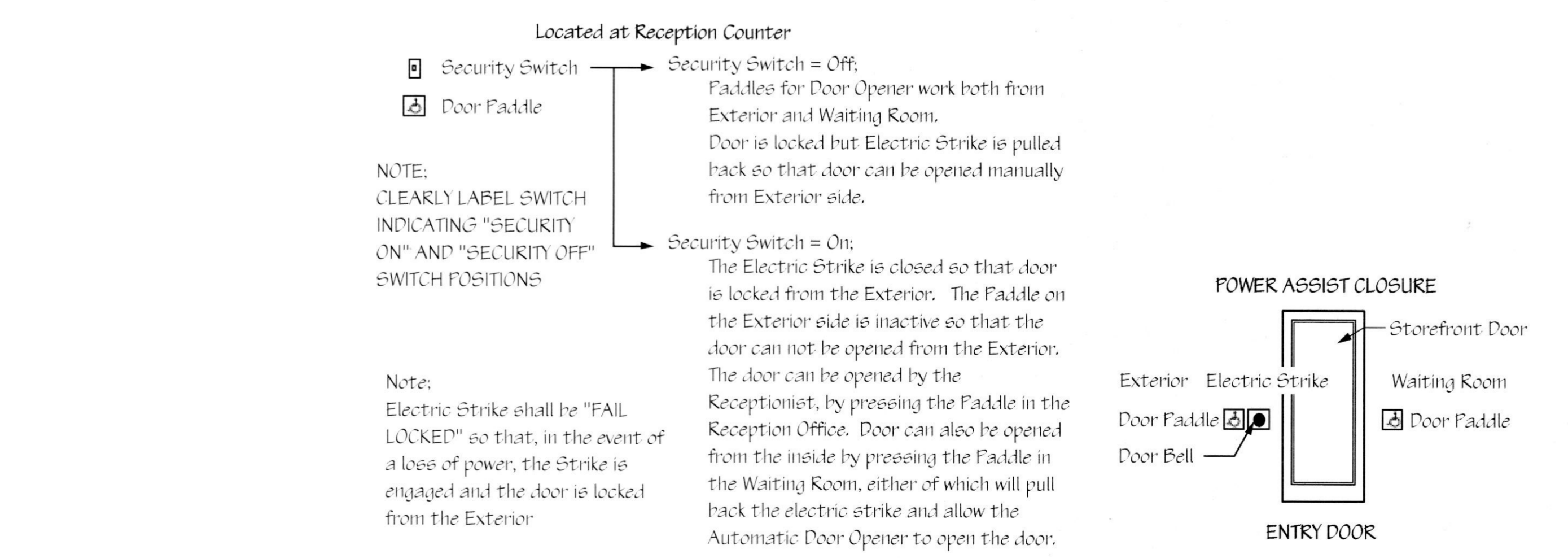
**TYPE "F":** FUNCTION ND405 (PRIVACY FUNCTION). 4 1/2" BUTT HINGES (MINIMUM 3 PER LEAF) BY STANLEY, WALL STOP BY ROCKWOOD.

**TYPE "G":** FLUSH PLATE "100" BY LINSTRUM ON "FLUSH" SIDE AND FULL PLATE "100N30" BY LINSTRUM ON "FULL" SIDE OF DOOR. KICKPLATE #37 18"x48" 182300 BY BALDWIN HARDWARE CORP. MAJIC DOOR (BY STANLEY) POWER ASSISTED POWER CLOSURE, 4 1/2" BUTT HINGES (MINIMUM 3 PER LEAF) BY STANLEY, WALL STOP BY ROCKWOOD. POWER OPENER SHALL BE PROVIDED WITH OPTION THAT ACTIVATES OPENER WHEN LEAF IS OPENED MANUALLY AND SHALL HAVE "SENTRIK 95" OVERHEAD SENSOR DESIGNED TO KEEP DOOR FROM CLOSING WHEN SOMEONE IS IN THE DOOR OPENING OR OPENING WHEN SOMEONE IS IN THE AREA OF THE DOOR SWINGS. COORDINATE OPENING SPEED SETTINGS WITH OWNER. REFER TO PLAN AND NOTE #39 FOR LOCATION OF FLUSH PADDLES TO OPERATE AUTOMATIC DOOR OPENER.

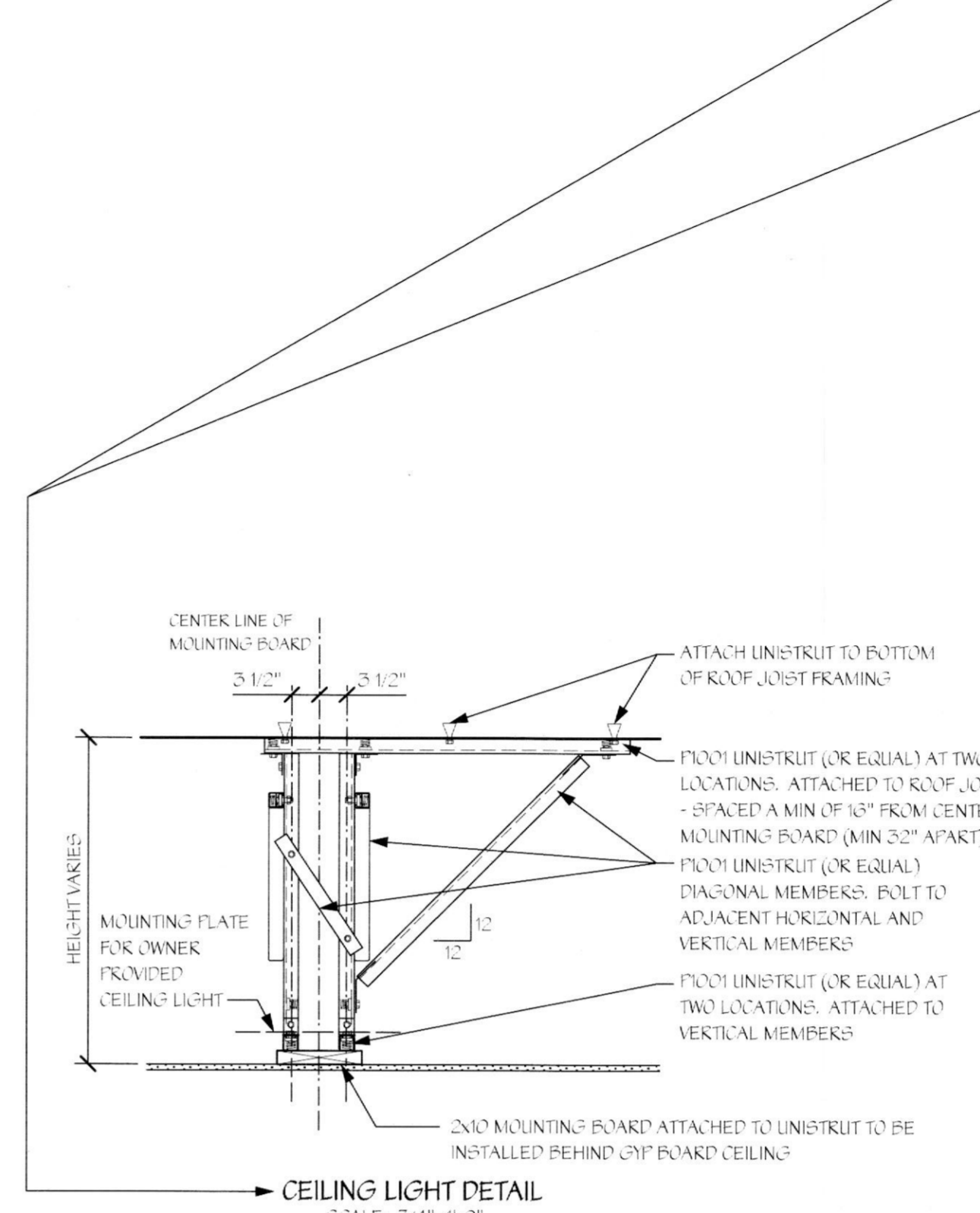
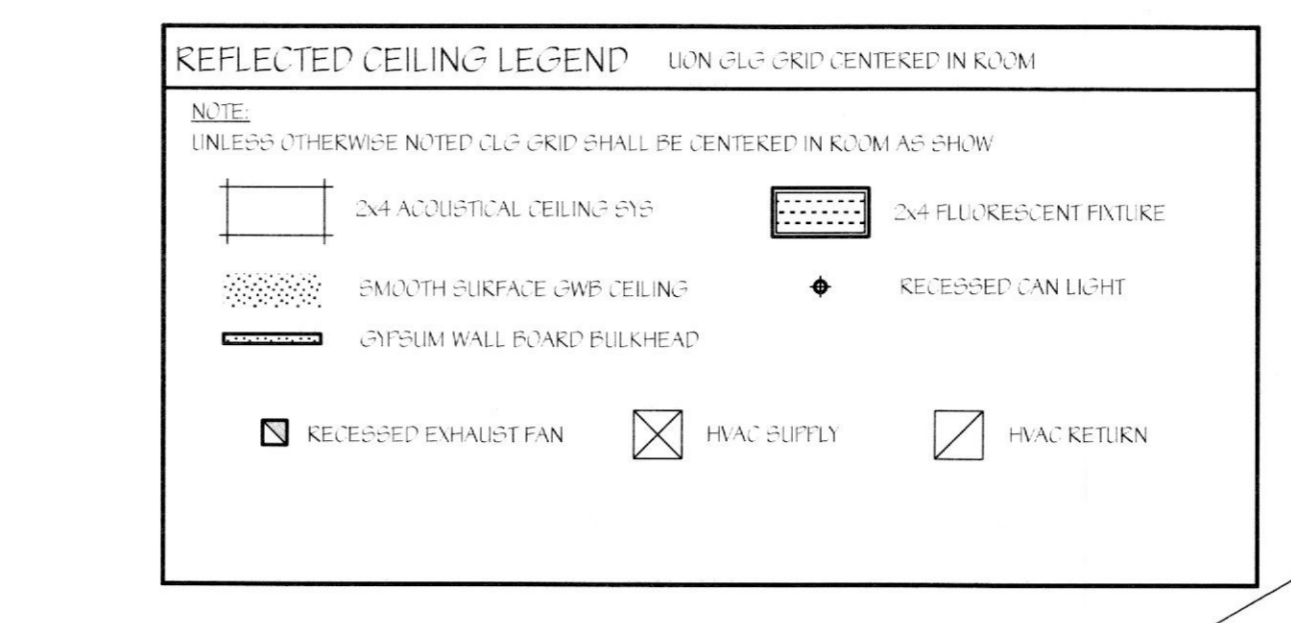
**TYPE "H":** PROVIDE FLUSH/FULL LATCH EQUAL TO HL-3 FLUSH/FULL LATCH BY GUNN-JOHNSON (182300 FINISH) IN MOUNTING POSITION "C" WITH 5" BACKSET AND KEVED DEAD BOLT WITH INTERIOR THUMB-TURN MOUNTED ABOVE (CAREFULLY COORDINATE MOUNTING HEIGHTS WITH OWNER). 1/4" PIVOT SET WITH M18 INTERMEDIATE PIVOT BY RAYON PER LEAF. HEAVY DUTY DOOR CLOSURE WITH HOLD OPEN OPTION - CORBIN RUL55WV 105200 X 1 X HOLD OPEN 650 X LEAD LINED COVER, KICKPLATE #37 18"x48" 182300 BY BALDWIN HARDWARE CORP. ON EACH SIDE OF DOOR, WALL STOP BY ROCKWOOD.

**TYPE "J":** FUNCTION ND105 (PASSAGE FUNCTION). CORBIN DC3200 SERIES SURFACE APPLIED DOOR CLOSER, 4 1/2" BUTT HINGES (MINIMUM 3 PER LEAF) BY STANLEY, WALL STOP BY ROCKWOOD.

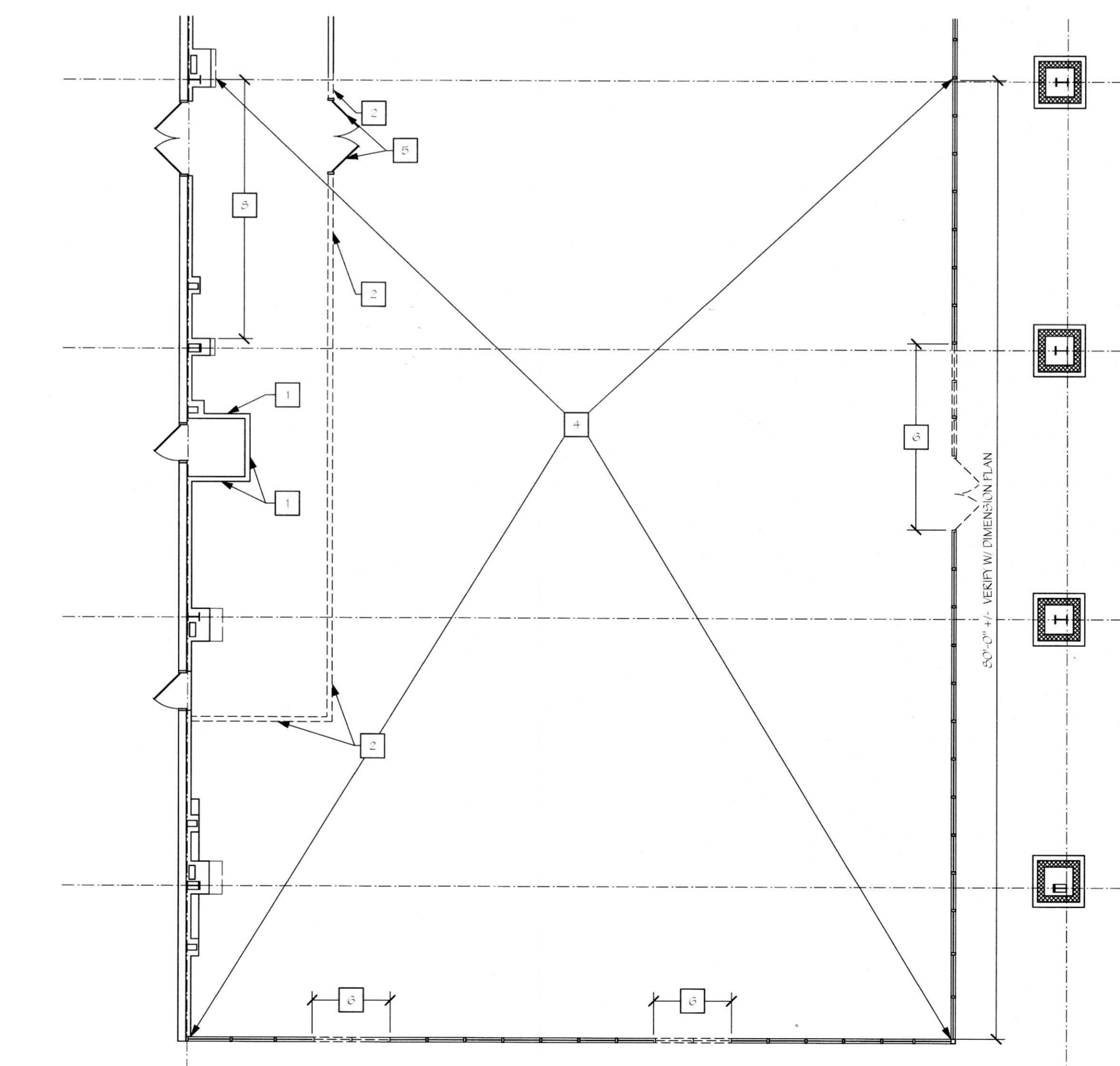
**TYPE "K":** PROVIDE STOREFRONT MANUFACTURER'S STANDARD HARDWARE FOR A COMPLETE INSTALLATION TO INCLUDE DEADLATCH HANDLES / CYLINDER EQUAL TO 4520 BY ADAMS RITE, HEAVY DUTY CLOSURE, HINGES, DOOR STOPS, FLUSH/FULL DOOR HARDWARE, FULL WEATHER-STRIPPING AND ADA APPROVED ALUMINUM THRESHOLD. INSTALL PER MANUFACTURER'S RECOMMENDATIONS.



EX A4 EXTERIOR DOORS CONTROL DIAGRAMS  
Scale: 1/4" = 1'-0"

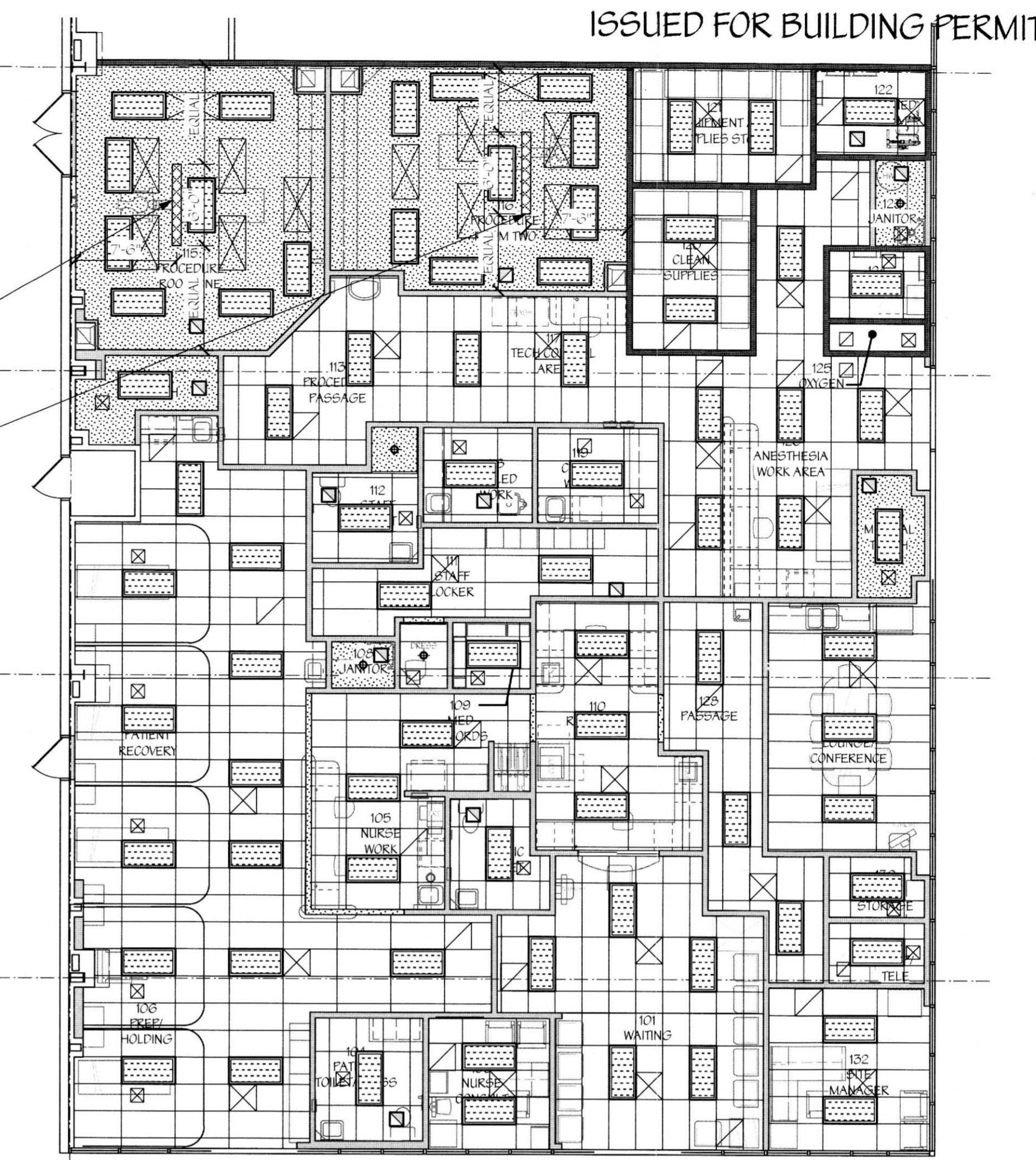


SUSPEND NEW 2x4x8 FLY-OUT MOUNTING BOARD PER DETAIL ABOVE FOR OWNER PROVIDED SUSPENDED LIGHT. LIGHT UNIT IS ABOUT 10" BELOW MOUNTING BOARD. SHALL BE INSTALLED BEHIND OFF BOARD CEILING AND SHALL BE HUNG FROM BOTTOM OF KNOX FRAMING ABOVE. PROVIDE LATERAL BRACING SUCH THAT UNIT WILL NOT SWAY. COORDINATE WITH OWNER'S VENDOR.



- DEMOLITION NOTES**
- 1. DESIGNATES A DEMOLITION NOTE THAT CORRESPONDS TO THE NOTES BELOW.
  - 1. EXISTING CONSTRUCTION TO REMAIN. REFER TO NEW PLAN FOR ADDITIONAL REQUIREMENTS.
  - 2. REMOVE EXIST STUD/GWB PARTITIONS AND DOORS/FRAMES. TYPICAL THROUGHOUT AREA OF DEMOLITION.
  - 3. CAREFULLY REMOVE PORTION OF EXISTING WALL FOR INSTALLATION OF NEW DOOR. COORDINATE WITH FLOOR PLAN AND LANDLORD.
  - 4. REMOVE EXISTING FLOORING IN THIS AREA AND PREPARE EXISTING CONCRETE FOR INSTALLATION OF NEW FINISHES. REMOVE EXISTING CEILING SYSTEM, INCLUDING LIGHTS AND DIFFUSERS, IN THIS AREA. REMOVE ABANDONED/UNUSED ITEMS IN CEILING SPACE IN PREPARATION FOR NEW WORK. COORDINATE LIMITS WITH FLOOR PLAN.
  - 5. REMOVE EXISTING DOOR AND FRAME.
  - 6. REMOVE EXISTING DOOR AND STOREFRONT IN THIS AREA. INSTALL NEW STOREFRONT / DOOR AS INDICATED ON PLANS.
  - 7. REMOVE EXISTING PLUMBING FUTURE, CAP AND SEAL ALL SUPPLY AND DRAINS AS REQUIRED.
  - 8. REMOVE EXISTING EXTERIOR GYP BOARD IN PROCEDURE ROOM AREA FOR INSTALLATION OF NEW LEAD LINED GYP BD. COORDINATE LIMITS WITH FLOOR PLAN.

EX A4 DEMO PLAN  
Scale: 1/8" = 1'-0"



DATE: 07/24/2014  
JOB NO: 11216  
DRAWN: STAFF  
CHECKED: CM

**C M**  
CORTLAND MORGAN ARCHITECT

711 N. FIELDER RD.  
ARLINGTON, TX 76012  
PH: (817) 635-5696  
FAX: (817) 635-5699

635 Westport Parkway  
Grapevine, Texas 76037  
Phone: 817-410-2838  
FAX: 817-251-8411

**d p c e**  
don penn consulting engineer

Lifeline Project Manager  
In Sync  
1213 Old Pikeville Road  
Whiteford, MD 21160  
Office: 410-462-8003  
Fax: 410-462-8046

**ACCESS CENTER**  
**LIFELINE**  
11771 Maunelle Blvd  
North Little Rock, AR 72115

**CORTLAND MORGAN ARCHITECT**  
REGISTERED ARCHITECT  
No. 258  
Arkansas

REVISIONS

A	ISSUE DATE

DOOR/FRAME SCHEDULE  
REFLECTED CEILING PLAN  
DEMOLITION PLAN

SHEET NUMBER

**A4**