

DRAWING NOTES

DATE: 07/24/2014
JOB NO: 11216
DRAWN: DU
CHECKED: DU



711 N. FIELDER RD.
ARLINGTON, TX 76012
PH: (817) 635-5696
FAX: (817) 635-5699

635 Westport Parkway Suite 300 Grapevine, Texas 76051
817-410-2858
817-251-8411
don penn consulting engineer

Lifeline Project Manager
I n S y n c
1213 Old Pylesville Road Whiteford, MD 21160
Office 410-452-8006 Fax 410-452-8046

ACCESS CENTER
LIFELINE
11771 Maumelle Blvd North Little Rock, AR 72113

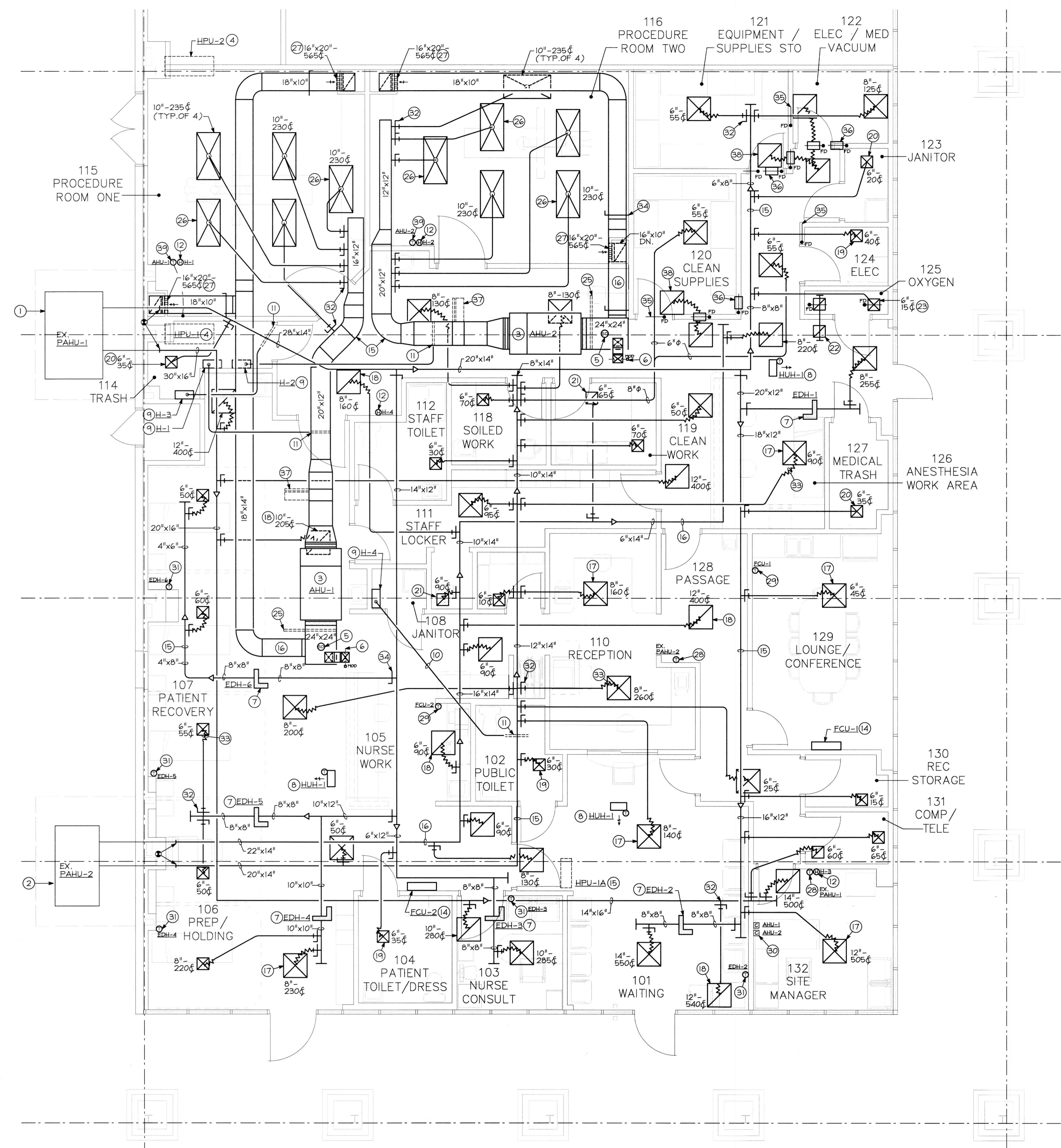


Table with 2 columns: REVISIONS, and rows for A through F with ISSUE DATE.

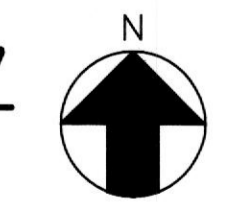
FLOOR PLAN-
NEW WORK
(HVAC)

SHEET NUMBER

M2



FLOOR PLAN-EXISTING CONDITIONS/
NEW WORK (HVAC)
SCALE: 1/4"=1'-0"



- 1 OUTLINE OF EXISTING ROOFTOP UNIT MOUNTED ROOF CURB ON UNIT SUPPORTS TO REMAIN. REBALANCE EXISTING ROOFTOP UNIT TO DELIVER 2,745 CFM SUPPLY AIR AND 360 CFM FRESH AIR INTAKE. CONTRACTOR TO FIELD VERIFY FOR EXISTING FRESH INTAKE HOOD AND PROVIDE/INSTALL FACTORY HOOD WITH 2-POSITION DAMPER AS NEEDED.
- 2 OUTLINE OF EXISTING ROOFTOP UNIT MOUNTED ROOF CURB ON UNIT SUPPORTS TO REMAIN. REBALANCE EXISTING ROOFTOP UNIT TO DELIVER 1,650 CFM SUPPLY AIR AND 280 CFM FRESH AIR INTAKE. CONTRACTOR TO FIELD VERIFY FOR EXISTING FRESH INTAKE HOOD AND PROVIDE/INSTALL FACTORY HOOD WITH 2-POSITION DAMPER AS NEEDED.
- 3 AIR HANDLING UNIT SUPPORTED HIGH AS POSSIBLE FROM STRUCTURE ABOVE. REFER TO SHEET M3 FOR SIZE AND CAPACITY (TYPICAL).
- 4 OUTLINE OF HEAT PUMP UNIT MOUNTED/SECURED TO ROOF ON THY CURBS. REFER TO SHEET M3 FOR SIZE AND CAPACITY. CONTRACTOR TO FIELD VERIFY AND EXTEND THE REFRIGERANT PIPING UP THROUGH ROOF AND OVER TO EACH APPROPRIATE AIR HANDLING UNIT AND MAKE PROPER CONNECTION TO THE INDOOR UNIT. SIZE/TRAP AND INSTALL REFRIGERANT PIPING PER THE MANUFACTURER'S RECOMMENDATIONS.
- 5 DUCT MOUNTED SMOKE DETECTOR. SMOKE DETECTOR SHOWN FOR INFORMATION ONLY. COORDINATE LOCATION OR SPECIAL REQUIREMENTS WITH FIRE ALARM VENDOR AND ELECTRICAL CONTRACTOR. MECHANICAL CONTRACTOR PROVIDE A 12"x12" ACCESS DOOR IN DUCTWORK FOR INSPECTIONS. COORDINATE WITH ELECTRICAL CONTRACTOR.
- 6 MOTOR OPERATED DAMPER (TYPICAL).
- 7 DUCT MOUNTED ELECTRIC HEATER SUPPORTED ABOVE CEILING. REFER TO SHEET M3 FOR SIZE AND CAPACITY (TYPICAL).
- 8 ELECTRIC HORIZONTAL UNIT HEATER WITH INTEGRAL THERMOSTAT TO BE SUPPORTED ABOVE THE CEILING. REFER TO SHEET M3 FOR SIZE AND CAPACITY (TYPICAL).
- 9 WALL MOUNTED HUMIDIFIER. MOUNT AS HIGH AS POSSIBLE ON WALL JUST BELOW THE CEILING. REFER TO SHEET M3 FOR SIZE AND CAPACITY AND DETAIL ON SHEET M3 FOR MORE INFORMATION (TYPICAL).
- 10 SUPPORT 1/2" COPPER STEAM/CONDENSATE RETURN LINE ABOVE CEILING.
- 11 DUCT MOUNTED STEAM DISTRIBUTOR. REFER TO DETAIL ON SHEET M3 FOR MORE INFORMATION.
- 12 HUMIDISTAT THERMOSTAT TO BE MOUNTED ±48" ABOVE FINISHED FLOOR TO CONTROL HUMIDIFIER. PROVIDE A CLEAR VENTED LOCKABLE COVER FOR HUMIDISTAT. CLEARLY/NEATLY IDENTIFY ABOVE THE HUMIDISTAT WITH 1/4" HIGH LETTERS. HUMIDISTAT TO BE FULLY OPERATIONABLE DURING THE WINTER/NON OPERATIONABLE DURING THE SUMMER.
- 13 OUTLINE OF HEAT PUMP UNIT MOUNTED/SECURED TO ROOF ON THY CURBS. REFER TO SHEET M3 FOR SIZE AND CAPACITY. CONTRACTOR TO FIELD VERIFY AND EXTEND THE REFRIGERANT PIPING UP THROUGH ROOF AND OVER TO EACH APPROPRIATE FAN COIL UNIT AND MAKE PROPER CONNECTION TO THE INDOOR UNIT. SIZE/TRAP AND INSTALL REFRIGERANT PIPING PER THE MANUFACTURER'S RECOMMENDATIONS.
- 14 WALL MOUNTED DUCTLESS SPLIT SYSTEM FAN COIL UNIT MOUNTED ON WALL ±80" ABOVE FINISHED FLOOR. REFER TO SHEET M3 FOR SIZE AND CAPACITY.
- 15 SUPPLY AIR DUCTWORK SUSPENDED FROM STRUCTURE ABOVE CEILING (TYPICAL).
- 16 RETURN AIR DUCTWORK SUSPENDED FROM STRUCTURE ABOVE CEILING (TYPICAL).
- 17 24"x24" LOUVERED FACE SUPPLY AIR DEVICE MOUNTED WITHIN ACOUSTICAL CEILING TILE WITH NECK SIZE AND AIR VOLUME INDICATED (TYPICAL).
- 18 24"x24" RETURN AIR GRILLE MOUNTED WITHIN ACOUSTICAL CEILING TILE WITH NECK SIZE AND AIR VOLUME INDICATED (TYPICAL).
- 19 12"x12" LOUVERED FACE SUPPLY AIR DEVICE MOUNTED WITHIN ACOUSTICAL CEILING TILE WITH NECK SIZE AND AIR VOLUME INDICATED (TYPICAL).
- 20 12"x12" LOUVERED FACE SUPPLY AIR DEVICE MOUNTED IN DRYWALL CEILING WITH NECK SIZE AND AIR VOLUME INDICATED.
- 21 12"x12" RETURN AIR GRILLE MOUNTED WITHIN ACOUSTICAL CEILING TILE WITH NECK SIZE AND AIR VOLUME INDICATED (TYPICAL).
- 22 12"x12" (8" NECK) RETURN AIR GRILLE MOUNTED WITHIN ACOUSTICAL CEILING TILE WITH AIR TRANSFER ASSEMBLY AND 12"x12" (8" NECK) RETURN AIR GRILLE MOUNTED IN DRYWALL CEILING WITH A RADIATION DAMPER.
- 23 12"x12" PERFORATED AIR DEVICE WITH RADIATION FIRE DAMPER MOUNTED IN DRYWALL CEILING WITH NECK SIZE DUCT CONNECTION ABOVE CEILING.
- 24 24"x24" RETURN AIR GRILLE MOUNTED WITHIN ACOUSTICAL CEILING TILE WITH AIR TRANSFER ASSEMBLY. REFER TO SHEET M3 FOR MORE INFORMATION.
- 25 FILTER PULL ACCESS AREA ABOVE THE CEILING FOR FACTORY SUPPLIED FILTER. CLEARLY/NEATLY IDENTIFY ON THE CEILING GRID WITH 1/4" HIGH LETTERS JUST BELOW FILTER.
- 26 24"x48" SUPPLY AIR LAMINAR FLOW DIFFUSER MOUNTED WITHIN DRYWALL CEILING WITH NECK SIZE (10") AND AIR VOLUME INDICATED (TYPICAL).
- 27 STAINLESS STEEL RETURN AIR GRILLE MOUNTED ±6" ABOVE FINISHED FLOOR IN WALL WITH NECK SIZE AND AIR VOLUME INDICATED.
- 28 NEW/RELOCATED THERMOSTAT TO BE MOUNTED ±48" ABOVE FINISHED FLOOR ON WALL TO CONTROL NEW ROOFTOP UNIT. PROVIDE A CLEAR VENTED LOCKABLE COVER FOR THERMOSTAT.
- 29 THERMOSTAT TO BE MOUNTED ±48" ABOVE FINISHED FLOOR ON WALL TO CONTROL DUCTLESS FAN COIL UNIT. PROVIDE A CLEAR VENTED LOCKABLE COVER FOR THERMOSTAT.
- 30 THE AAO SYSTEM MANAGER DIGITAL DISPLAY/CONTROLLER TO BE MOUNTED ±48" ABOVE FINISHED FLOOR ON WALL TO CONTROL AIR HANDLING UNIT (AAO). THE SYSTEM MANAGER WILL TAKE HUMIDITY AND TEMPERATURE READINGS FROM THE VCMX CONTROLLER AS SENSED IN THE PROCEDURE ROOMS. ALL TEMPERATURE AND HUMIDITY SETPOINTS WILL BE SET FROM THE SYSTEM MANAGER.
- 31 HEATING ONLY THERMOSTAT TO BE MOUNTED ±48" ABOVE FINISHED FLOOR ON WALL TO CONTROL DUCT MOUNTED ELECTRIC HEATER. PROVIDE A CLEAR VENTED LOCKABLE COVER FOR THERMOSTAT.
- 32 AIR-TITE FITTING WITH DAMPER AND ADHESIVE GASKET (TYPICAL).
- 33 INSULATED/PLENUM RATED FLEXIBLE DUCTWORK (TYPICAL).
- 34 VOLUME DAMPER (TYPICAL).
- 35 TRANSITION ROUND RIGID DUCTWORK TO A 8"x8" DUCT MOUNTED IN WALL ABOVE CEILING TO ACCOMPANY FIRE DAMPER AS INDICATED. CLEARLY/NEATLY IDENTIFY ON THE CEILING GRID WITH 1/4" HIGH LETTERS JUST BELOW FIRE DAMPER.
- 36 12"x10" AIR TRANSFER DUCT MOUNTED IN WALL ABOVE THE CEILING TO ACCOMPANY FIRE DAMPER. CLEARLY/NEATLY IDENTIFY ON THE CEILING GRID WITH 1/4" HIGH LETTERS JUST BELOW FIRE DAMPER.
- 37 24"x24"x11/2" HEPA FILTER IN A 24"x24" FILTER PULL RACK ABOVE THE CEILING. PROVIDE HIGH CAPACITY FILTER AS MANUFACTURED BY CAMPIL AIR FILTER, FILTERA 2000, (FA 1560-01-01). FILTER SHALL HAVE NO MORE THEN 1.0" PRESSURE DROP. ALSO INCLUDED A MERV 8 CAMPIL 30/30 24"x24"x2" PREFILTER. CLEARLY/NEATLY IDENTIFY ON THE FILTER BOX AND ON THE CEILING GRID WITH 1/4" HIGH LETTERS HEPA FILTER. FILTER RACK WILL HOUSE THE HEPA AND PRE FILTERS AS MANUFACTURED BY CAMPIL MAGNAPACK 70713202 M/P 4-12 PF 1 x 1. LASTLY PROVIDE/INSTALL PER MANUFACTURER'S RECOMMENDATIONS A DYNER 0-2" GAGE WITH A605 KIT.
- 38 24"x24" RETURN AIR GRILLE MOUNTED WITHIN ACOUSTICAL CEILING TILE WITH AIR TRANSFER ASSEMBLY. REFER TO SHEET M3 FOR MORE INFORMATION. CLEARLY/NEATLY IDENTIFY ON THE CEILING GRID WITH 1/4" HIGH LETTERS JUST BELOW FIRE DAMPER.
- 39 DIGITAL TEMPERATURE/HUMIDITY SENSOR TO BE MOUNTED ON THE WALL ±48" ABOVE FINISHED FLOOR. INTERLOCK WITH THE AAO'S REMOTE VCMX CONTROLLER THAT WILL BE LOCATED IN THE TELE/COMP. ROOM. HUMIDITY SENSOR TO SERVE AAO'S DEHUMIDIFICATION SYSTEM AND THE TEMPERATURE SENSOR FOR HEATING/COOLING TEMPERATURE CONTROL. HUMIDITY AND TEMPERATURE READINGS FROM THE PROCEDURE ROOM WILL BE SENT TO AAO'S REMOTE VCMX CONTROLLER TO BE PROCESSED. VCMX CONTROLLER WILL BE MOUNTED IN TELE/COMPUTER ROOM. PRIOR TO INSTALL COORDINATE EXACT MOUNTING LOCATION WITH THE GENERAL CONTRACTOR. THE INFORMATION IS THAN SENT TO THE AIR HANDLING UNITS ACCORDINGLY. THE DIGITAL TEMPERATURE/HUMIDITY SENSOR WILL HAVE A DIGITAL TEMPERATURE READOUT WITH THE CAPABILITY TO ALLOW A MANUAL 2 DEGREE AIR TEMPERATURE ADJUSTMENT CHANGE WITHIN THE PROCEDURE ROOM.