



711 N. FIELDER RD.
 ARLINGTON, TX 76012
 PH: (817) 635-5696
 FAX: (817) 635-5699

635 Westport
 Suite 300
 Grapevine, Texas
 76051
 Phone: 817-251-8411
 Fax: 817-251-8411



Lifeline Project Manager
 I n S y n c
 1213 Old Pylesville Road
 Whiteford, MD 21160
 Office 410-452-8006 Fax 410-452-8046

ACCESS CENTER
 LIFELINE
 11771 Maumelle Blvd
 North Little Rock, AR 72113

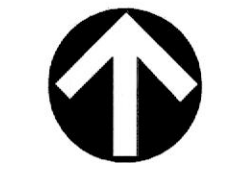


REVISIONS

A	-ISSUE	DATE
B	-ISSUE	DATE
C	-ISSUE	DATE
D	-ISSUE	DATE
E	-ISSUE	DATE
F	-ISSUE	DATE

FLOOR PLAN-
 NEW WORK
 (EXHAUST)

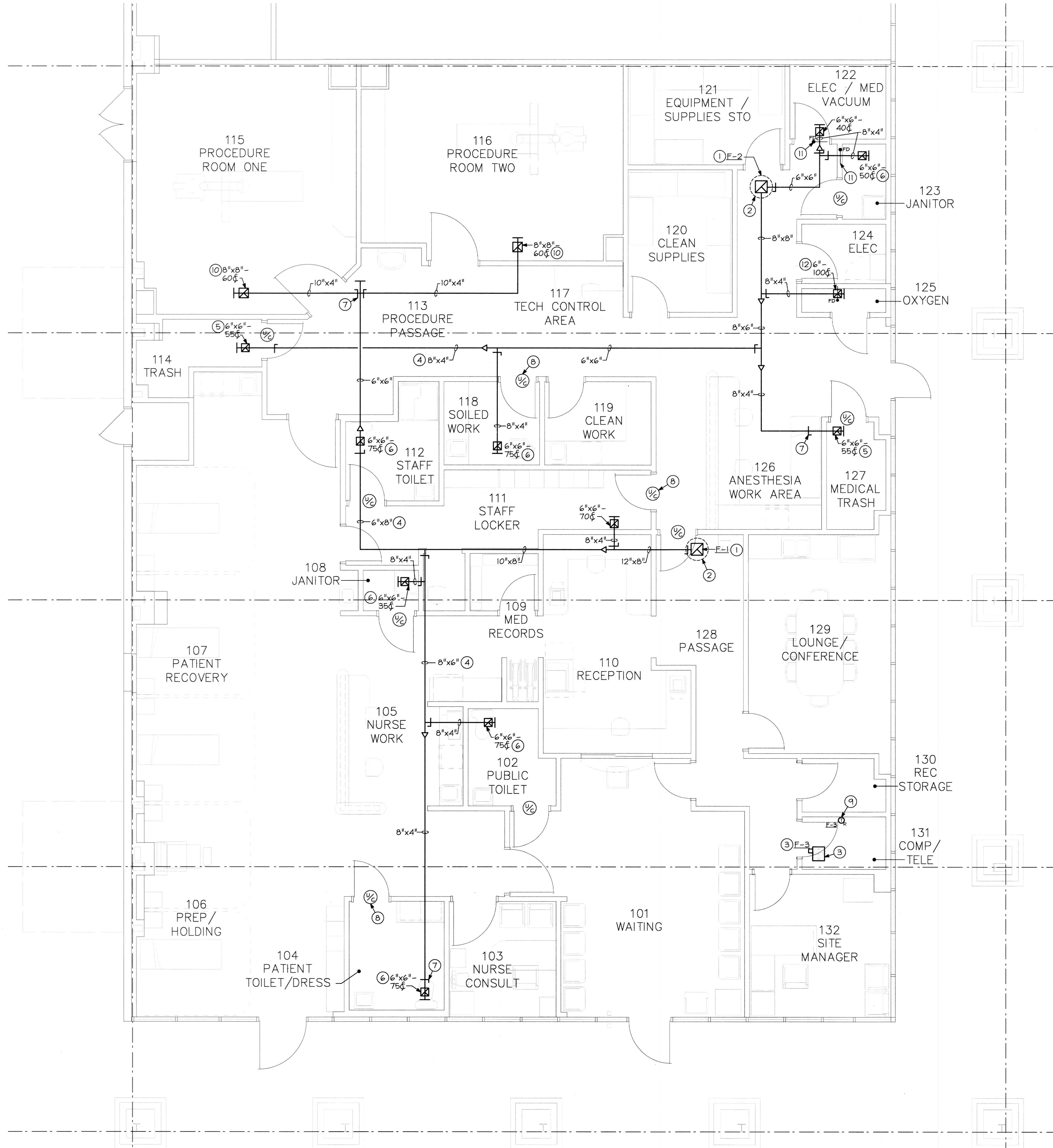
SHEET NUMBER



M3

DRAWING NOTES

- ① OUTLINE OF EXHAUST FAN MOUNTED ON ROOF. REFER TO SHEET M3 FOR SIZE AND CAPACITY. PRIOR TO INSTALLING THE ROOF MOUNTED EXHAUST FAN THE MECHANICAL CONTRACTOR MUST COORDINATE THE EXACT MOUNTING LOCATION WITH THE BUILDING OWNER.
- ② EXTEND A 14"x14" EXHAUST AIR DUCTWORK PLENUM BOX DOWN ±24" BELOW ROOF LINE AND UP THROUGH EXISTING ROOF TO ROOF MOUNTED EXHAUST FAN. TRANSITION DUCTWORK AS REQUIRED TO UNIT'S CONNECTION. PROVIDE FLEXIBLE CONNECTION AT DUCTWORK CONNECTION TO UNIT.
- ③ CEILING MOUNTED VENTILATION FAN SUPPORTED FROM STRUCTURE ABOVE. DISCHARGE INTO PLENUM. REFER TO SHEET M3 FOR SIZE AND CAPACITY.
- ④ EXHAUST AIR DUCTWORK SUPPORTED ABOVE THE CEILING/TIGHT TO STRUCTURE (TYPICAL).
- ⑤ EXHAUST AIR GRILLE MOUNTED IN DRYWALL CEILING WITH NECK SIZE AND AIR VOLUME INDICATED (TYPICAL).
- ⑥ EXHAUST AIR GRILLE MOUNTED WITHIN ACOUSTICAL CEILING TILE WITH NECK SIZE AND AIR VOLUME INDICATED (TYPICAL).
- ⑦ VOLUME DAMPER (TYPICAL).
- ⑧ 1" DOOR UNDERCUT BY OTHERS (TYPICAL).
- ⑨ REVERSE ACTING THERMOSTAT TO BE MOUNTED ±48" ABOVE FINISHED FLOOR ON WALL TO CONTROL VENTILATION FAN.
- ⑩ STAINLESS STEEL EXHAUST AIR GRILLE MOUNTED IN DRYWALL CEILING WITH NECK SIZE AND AIR VOLUME INDICATED.
- ⑪ INSTALL A FIRE DAMPER IN DUCTWORK ABOVE THE CEILING. CLEARLY/NEATLY IDENTIFY ON THE CEILING GRID WITH 1/4" HIGH LETTERS JUST BELOW FIRE DAMPER.
- ⑫ 12"x12" PERFORATED AIR DEVICE WITH RADIATION FIRE DAMPER MOUNTED IN DRYWALL CEILING WITH NECK SIZE DUCT CONNECTION ABOVE CEILING.



**FLOOR PLAN-EXISTING CONDITIONS/
 NEW WORK (EXHAUST)**

SCALE: 1/4"=1'-0"

