



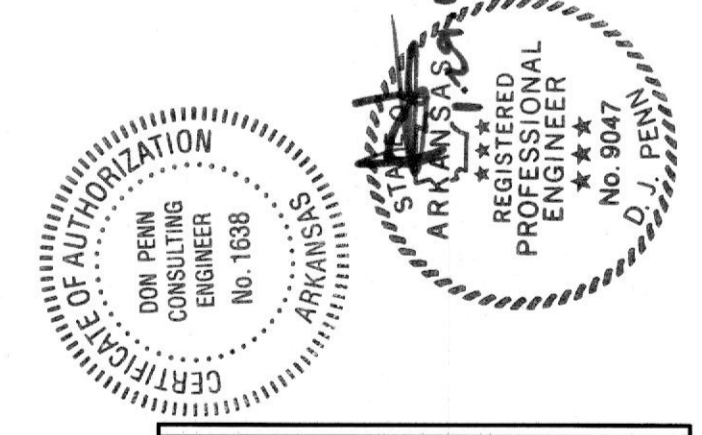
711 N. FLEDER RD.
 ARLINGTON, TX 76012
 PH: (817) 635-5696
 FAX: (817) 635-5699

635 Westport
 Suite 300
 Grapevine, Texas
 76051
 PH: (817) 410-2858
 FAX: (817) 417-2511-8411

d p c e
 don penn consulting engineer

ACCESS CENTER
 LIFELINE
 Lifeline Project Manager
 I n S y n c
 1213 Old Pylesville Road Whiteford, MD 21160
 Office 410-452-8006 Fax 410-452-8046

11771 Maumelle Blvd
 North Little Rock, AR 72113



REVISIONS	
A-	ISSUE DATE
B-	ISSUE DATE
C-	ISSUE DATE
D-	ISSUE DATE
E-	ISSUE DATE
F-	ISSUE DATE

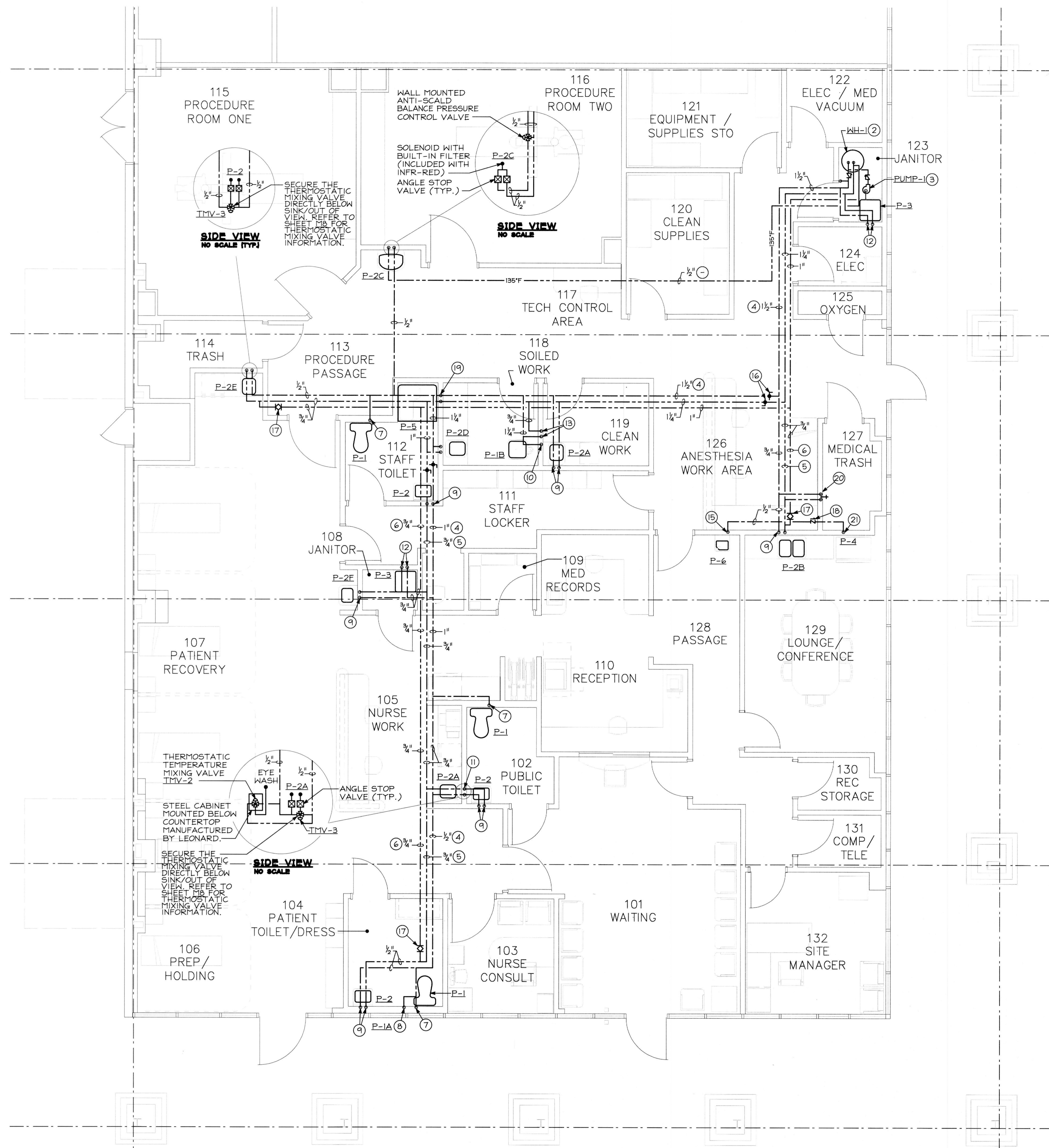
FLOOR PLAN-
 NEW WORK
 (PIPING)

SHEET NUMBER

M4

DRAWING NOTES

- CONTRACTOR TO FIELD VERIFY/LOCATE EXISTING 1" DOMESTIC COLD WATER LINE CAPPED JUST BELOW SLAB. TRANSITION TO A 1 1/2" COLD WATER PIPE AND EXTEND UP EXPOSED ON WATER FOR NEW SERVICE. PROVIDE A SHUT OFF VALVE 42" ABOVE SLAB. CONTRACTOR TO CONTACT THE WATER SERVICE COMPANY TO VERIFY IF EXISTING WATER METER REQUIRES TO BE ACTIVATED. ALSO IF THERE IS NO PRESSURE REDUCING STATION FOR THIS SERVICE THAN ONE MUST BE INSTALLED ON THE WALL IN THE JANITOR'S CLOSET.
- 52 GALLON ELECTRIC WATER HEATER MOUNTED ON FLOOR. REFER TO DETAIL ON SHEET 116 FOR PIPING AND MOUNTING DETAIL. ALSO REFER TO SHEET 118 FOR SIZE AND CAPACITY.
- HOT WATER RECIRCULATION IN-LINE PUMP. PROVIDE AND INSTALL FROM STRUCTURE ABOVE AS MANUFACTURED BY TACO, MODEL #0011-BF4 WITH 6.0 GPM FLOW AT 3,250 RPM, 1/8 HP, 115V/1Ø WITH ALL BRONZE CONSTRUCTION.
- DOMESTIC COLD WATER PIPING SUPPORTED ABOVE CEILING (TYPICAL).
- DOMESTIC HOT WATER PIPING SUPPORTED ABOVE CEILING (TYPICAL).
- DOMESTIC HOT WATER RECIRCULATION PIPING SUPPORTED ABOVE CEILING (TYPICAL).
- 1/2" DOMESTIC COLD WATER PIPING DOWN IN WALL TO SERVE TOILET P-1 (TYPICAL).
- 1/2" DOMESTIC COLD WATER PIPING DOWN IN WALL TO SERVE P-1A. PRIOR TO INSTALLATION COORDINATE EXACT LOCATION WITH THE ARCHITECT AND GENERAL CONTRACTOR IN THE FIELD. CONTRACTOR TO STUB PLUMBING FIXTURE P-1A THROUGH WALL AS REQUIRED AND SUPPLY SPRAY NOZZLE TO THE OWNER SEPARATELY AFTER THE PUNCH OUT DONE BY THE ARCHITECT.
- 1/2" DOMESTIC HOT AND COLD WATER PIPING DOWN IN WALL TO SERVE SINK WITH POINT OF USE THERMOSTATIC MIXING VALVE TMY-3. REFER TO SHEET 118 BELOW PLUMBING FIXTURE SCHEDULE FOR MANUFACTURED/MODEL (TYPICAL).
- 1" DOMESTIC COLD WATER PIPE DOWN IN WALL TO P-1B FLOOR MOUNTED CLINIC SERVICE SINK.
- EXTEND 1/2" DOMESTIC HOT AND COLD WATER LINE DOWN IN WALL TO SERVE P-2A NURSE WORK SINK. INSTALL A THERMOSTATIC TEMPERATURE CONTROLLER BELOW COUNTERTOP TMY-2. REFER TO SHEET 118 BELOW PLUMBING FIXTURE SCHEDULE FOR MANUFACTURED/MODEL. PROVIDE TEMPERATURE CONTROLLER WITH FACTORY OPTION STEEL CABINET WITH COVER MOUNTED ON WALL BELOW SINK.
- 1/2" DOMESTIC HOT AND COLD WATER PIPINGS DOWN IN WALL TO SERVE P-3 MOP SINK.
- 1/2" DOMESTIC HOT AND COLD WATER PIPING DOWN IN WALL TO SERVE SERVICE FAUCET. REFER TO SHEET 119, SECTION 15400, P-1B SPECIFICATIONS FOR MORE INFORMATION.
- EXTEND 1/2" DOMESTIC HOT AND COLD WATER PIPING WITHIN WALL TO SERVE P-2C SCRUB SINK. INSTALL A BRADLEY, MODEL #559-2005 BALANCED PRESSURE VALVE, ANTI-SCALD BALANCED PRESSURE VALVE, MOUNTED ON WALL 44" ABOVE SCRUB SINK ON THE RIGHT HAND SIDE OF THE SINK. WALL MOUNTED ANTI-SCALD BALANCED PRESSURE VALVE TO WORK IN CONJUNCTION WITH INFRA-RED GOOSENECK FAUCET. REFER TO SHEET 118 FOR MORE INFORMATION.
- 1/2" DOMESTIC COLD WATER PIPE DOWN IN WALL TO P-6 WATER FOUNTAIN.
- BALL VALVE (TYPICAL).
- BALANCING VALVE. BALANCE AT 2.0 GPM.
- CHECK VALVE (TYPICAL).
- 1/2" DOMESTIC HOT AND COLD WATER PIPING DOWN IN WALL TO P-5 SHOWER BALANCING VALVE.
- 1/2" DOMESTIC HOT AND COLD WATER PIPING DOWN WITHIN WALL TO SERVE FAUCET #8344.111 WITH TOP BRACE, STOPS, 10-1/2" SPOUT, 3/4" HOSE THREAD ON SPOUT, INTEGRAL VACUUM BREAKER, AND ADJUSTABLE UNION COUPLINGS AS MANUFACTURED BY FIAT. MOUNT SERVICE FAUCET ON WALL 43'-0" ABOVE FINISHED FLOOR.
- 1/2" DOMESTIC COLD WATER PIPING DOWN WITHIN WALL TO SERVE P-4 REFRIGERATOR ICE MAKER VALVE BOX.



**FLOOR PLAN-EXISTING CONDITIONS/
 NEW WORK (PIPING)**
 SCALE: 1/4"=1'-0"

