

DATE: 07/24/2014
 JOB NO: 11216
 DRAWN: DU
 CHECKED: DU



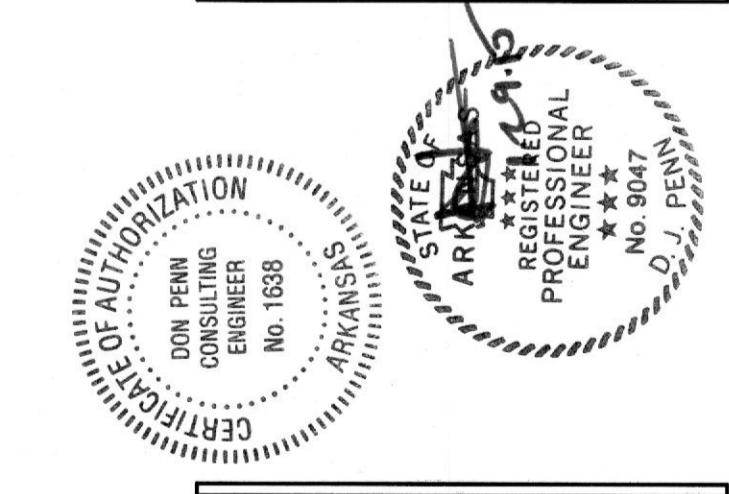
711 N. FLEDER RD.
 ARLINGTON, TX 76012
 PH: (817) 635-5666
 FAX: (817) 635-5699

635 Westport
 P.O. Box 300
 Suite 300
 Grapevine, Texas
 76051
 817-410-2858
 817-417-251-8411

d p c e
 don penn consulting
 engineer

Lifeline Project Manager
 I n S y n c
 1213 Old Pylesville Road Whiteford, MD 21160
 Office 410-452-8006 Fax 410-452-8046

ACCESS CENTER
 LIFELINE
 11771 Maumelle Blvd
 North Little Rock, AR 72113



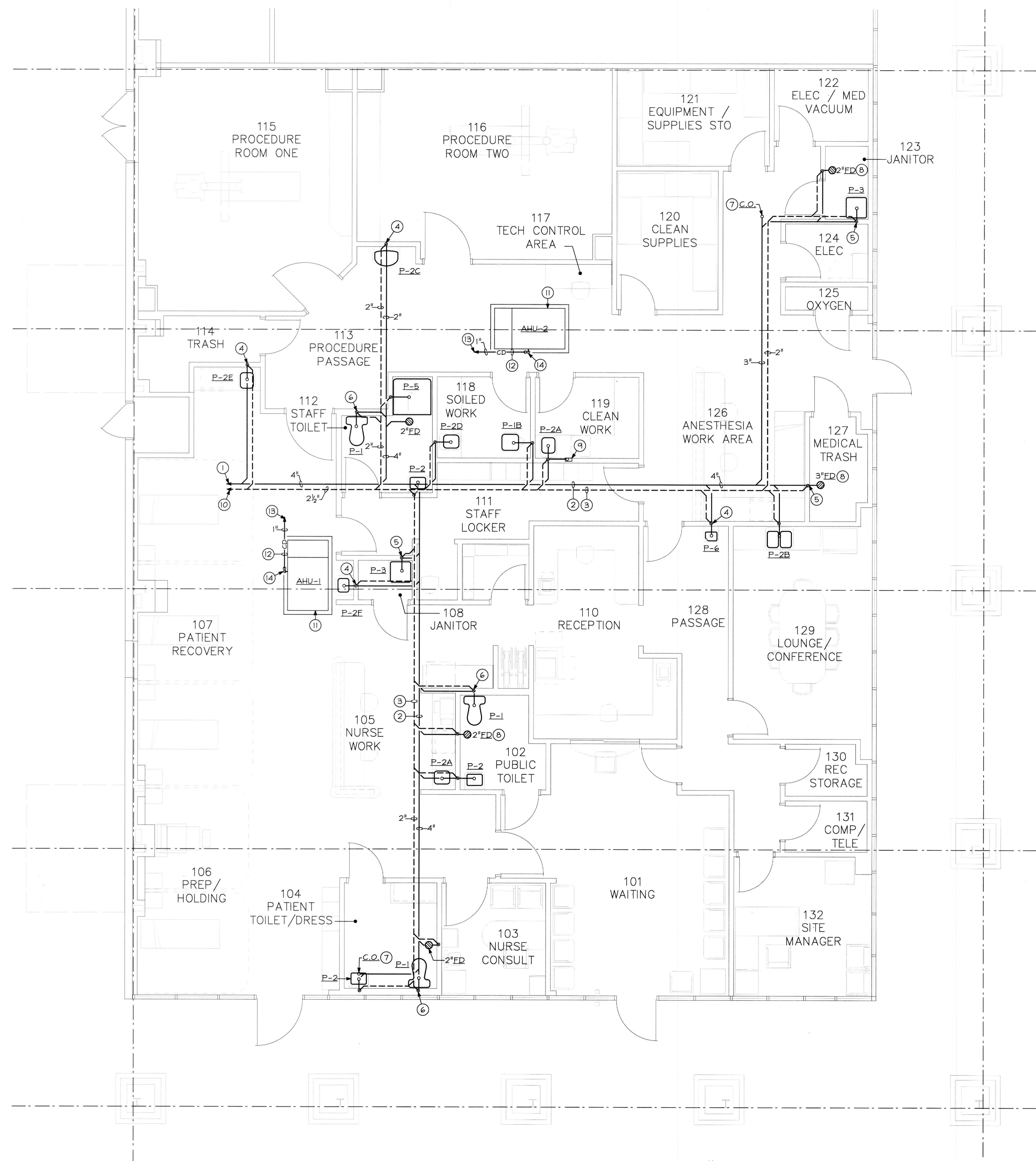
REVISIONS

A-	ISSUE	DATE
B-	ISSUE	DATE
C-	ISSUE	DATE
D-	ISSUE	DATE
E-	ISSUE	DATE
F-	ISSUE	DATE

FLOOR PLAN-
 NEW WORK
 (PLUMBING)

SHEET NUMBER

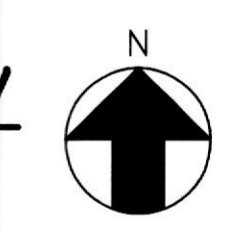
M5



DRAWING NOTES

- ① EXTEND AND CONNECT TO EXISTING SANITARY SEWER SERVICE BELOW SLAB. CONTRACTOR TO FIELD VERIFY/DETERMINE EXACT LOCATION, INVERT AND SLOPE/DIRECTION OF EXISTING SANITARY LINE BELOW SLAB AND MAKE PROPER CONNECTION.
- ② SANITARY PIPING BELOW SLAB. SLOPE AT 1/8" PER FOOT (TYPICAL).
- ③ SANITARY VENT PIPING SUPPORTED FROM STRUCTURE ABOVE CEILING (TYPICAL).
- ④ 2" SANITARY VENT PIPING UP AND 2" DOWN TO SANITARY PIPING (TYPICAL).
- ⑤ 2" SANITARY VENT PIPING UP AND 3" DOWN TO SANITARY PIPING (TYPICAL).
- ⑥ 2" SANITARY VENT PIPING UP AND 4" DOWN TO SANITARY PIPING (TYPICAL).
- ⑦ FLOOR CLEANOUT (TYPICAL).
- ⑧ FLOOR DRAIN (TYPICAL).
- ⑨ OUTLET BOX TO BE MOUNTED ±24" A.F.F. BELOW COUNTERTOP AS MANUFACTURED BY SIOUX CHIEF, SERIES #696 (DRAIN BOX ONLY). PRIOR TO INSTALL COORDINATE EXACT MOUNTING LOCATION WITH THE GENERAL CONTRACTOR.
- ⑩ CONTRACTOR TO FIELD VERIFY/LOCATE EXISTING 3" SANITARY VENT PIPE THROUGH AND EXTEND TO FOR PROPER CONNECTION. MAINTAIN A MINIMUM OF 15'-0" FROM ANY FRESH AIR INTAKES.
- ⑪ OUTLINE OF AIR HANDLING UNIT SUPPORTED ABOVE THE CEILING. REFER TO SHEET 112 FOR MORE INFORMATION.
- ⑫ CONDENSATE LINE SUPPORTED ABOVE CEILING. SLOPE PIPE A MINIMUM OF 1/8" PER FOOT AWAY FROM UNIT.
- ⑬ EXTEND CONDENSATE LINE ABOVE CEILING TO NEAREST STORM WATER RISER AND PROVIDE A CHECK VALVE AT POINT OF CONNECTION.
- ⑭ PROVIDE A P-TRAP FOR CONDENSATE PIPE AT UNIT'S CONNECTION.

**FLOOR PLAN-EXISTING CONDITIONS/
 NEW WORK (PLUMBING)**
 SCALE: 1/4"=1'-0"



DE-DUCT ALTERNATE

1) THE CONTRACTOR SHALL PROVIDE THE OWNER A DE-DUCT ALTERNATE OPTION TO UTILIZE SCHEDULE 40 DWV PVC PIPING UNDERGROUND/BELOW SLAB IN LIEU OF THE SPECIFIED CAST IRON SOIL PIPING.

