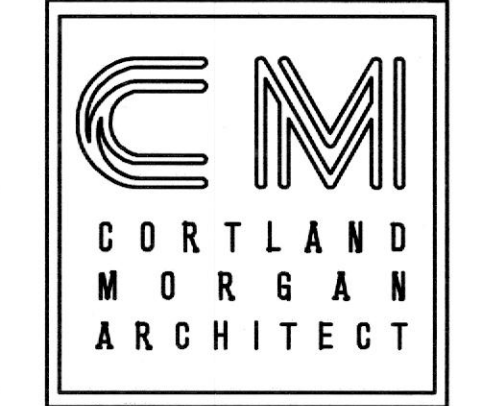


DATE: 07/24/2014  
 JOB NO: 11216  
 DRAWN: DJ  
 CHECKED: DJ



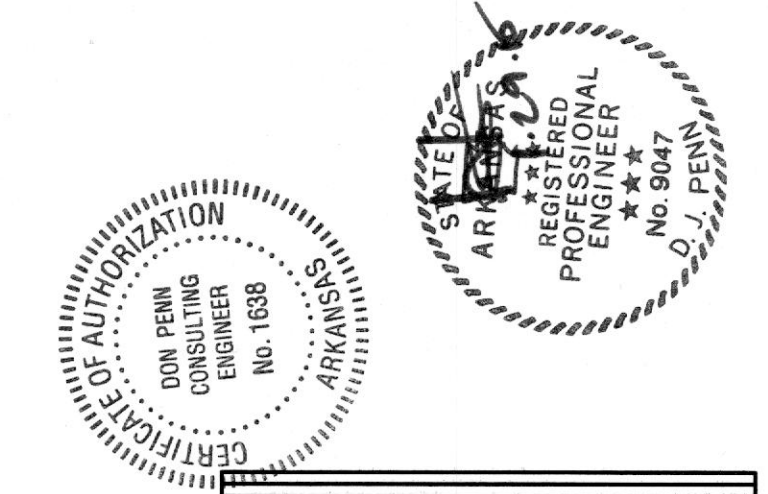
711 N. FLEDER RD.  
 ARLINGTON, TX 76012  
 PH: (817) 635-5696  
 FAX: (817) 635-5699

635 Westport Parkway, Suite 300, Irving, Texas 76091  
 Phone: 817-410-2858  
 Fax: 817-410-2511

**d p c e**  
 don penn consulting engineer

Lifeline Project Manager  
 In Sync  
 1213 Old Pylesville Road, Whiteford, MD 21160  
 Office 410-452-8006 Fax 410-452-8046

ACCESS CENTER  
 LIFELINE  
 11771 Maumelle Blvd  
 North Little Rock, AR 72113



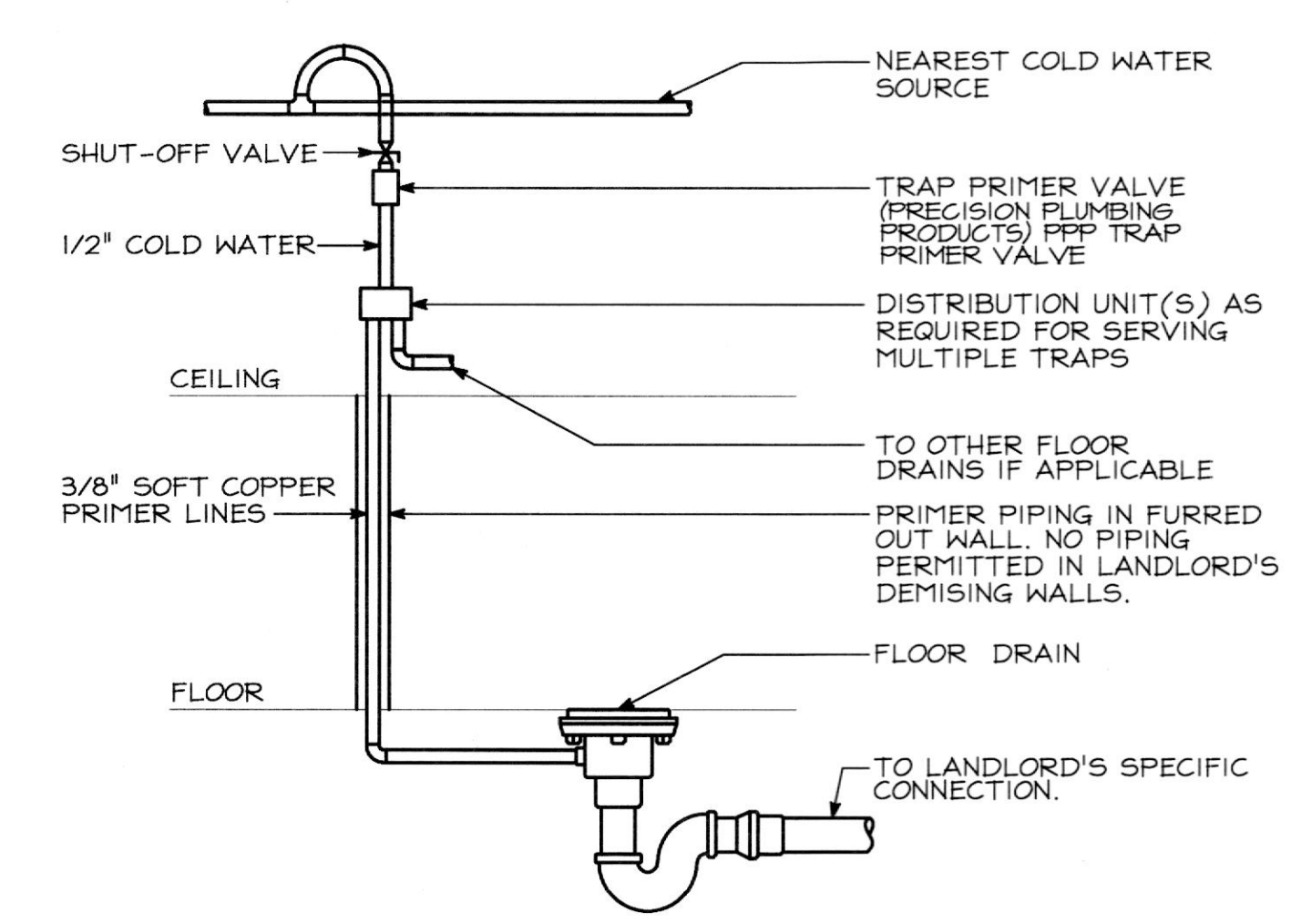
REVISIONS

A	ISSUE DATE
B	ISSUE DATE
C	ISSUE DATE
D	ISSUE DATE
E	ISSUE DATE
F	ISSUE DATE

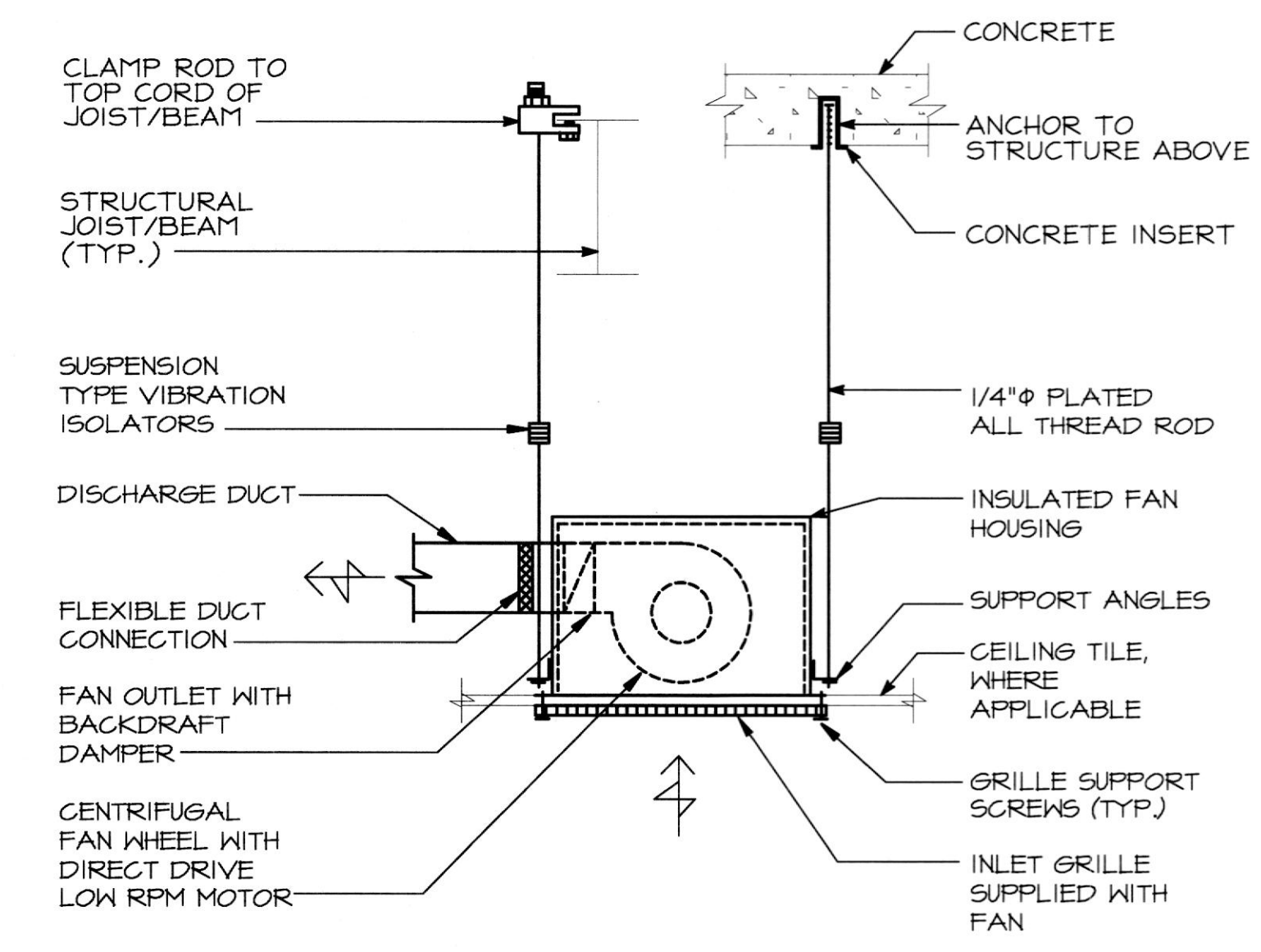
DETAILS

SHEET NUMBER

M7

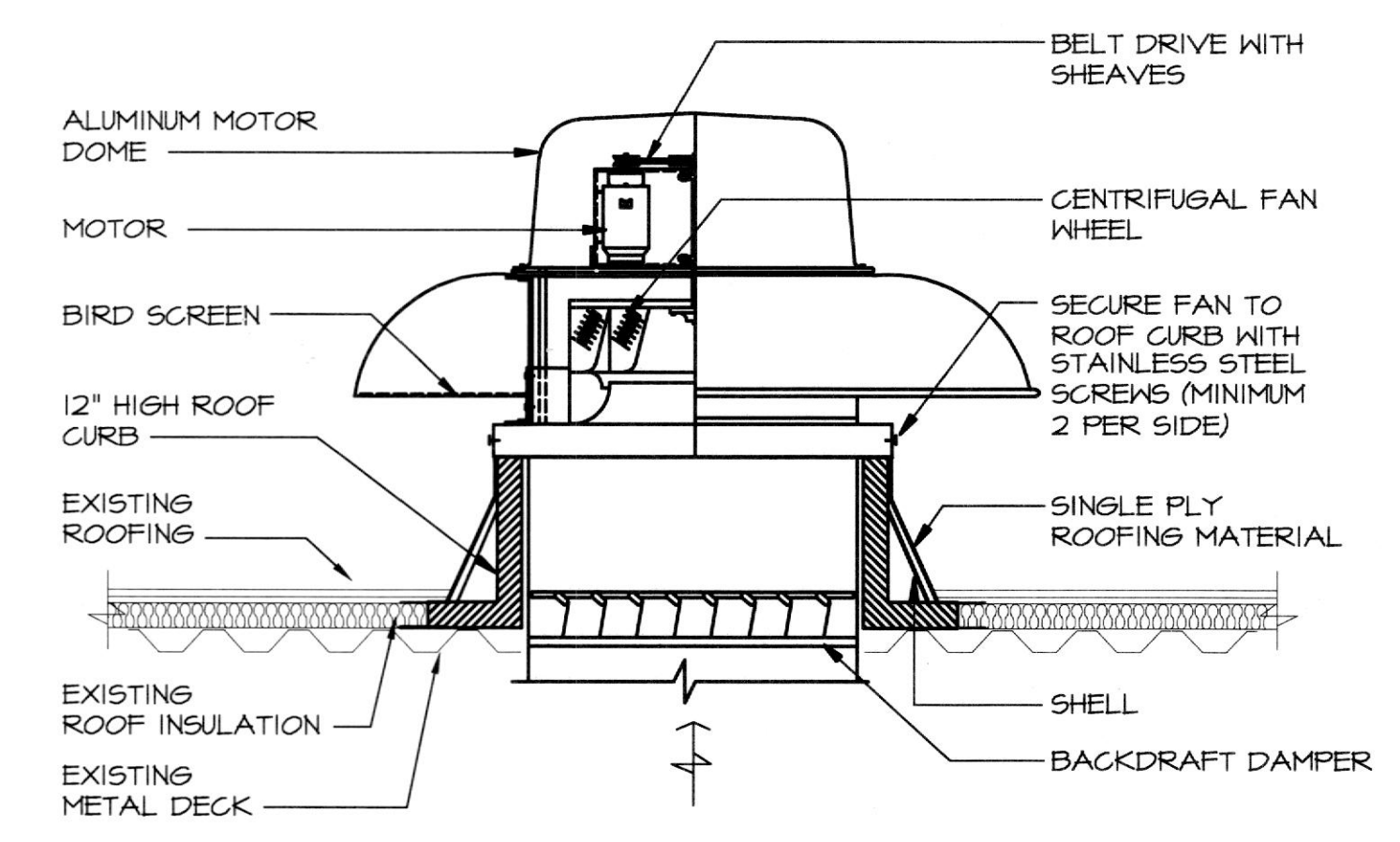


**FLOOR DRAIN AND TRAP PRIMER DETAIL**  
 NO SCALE



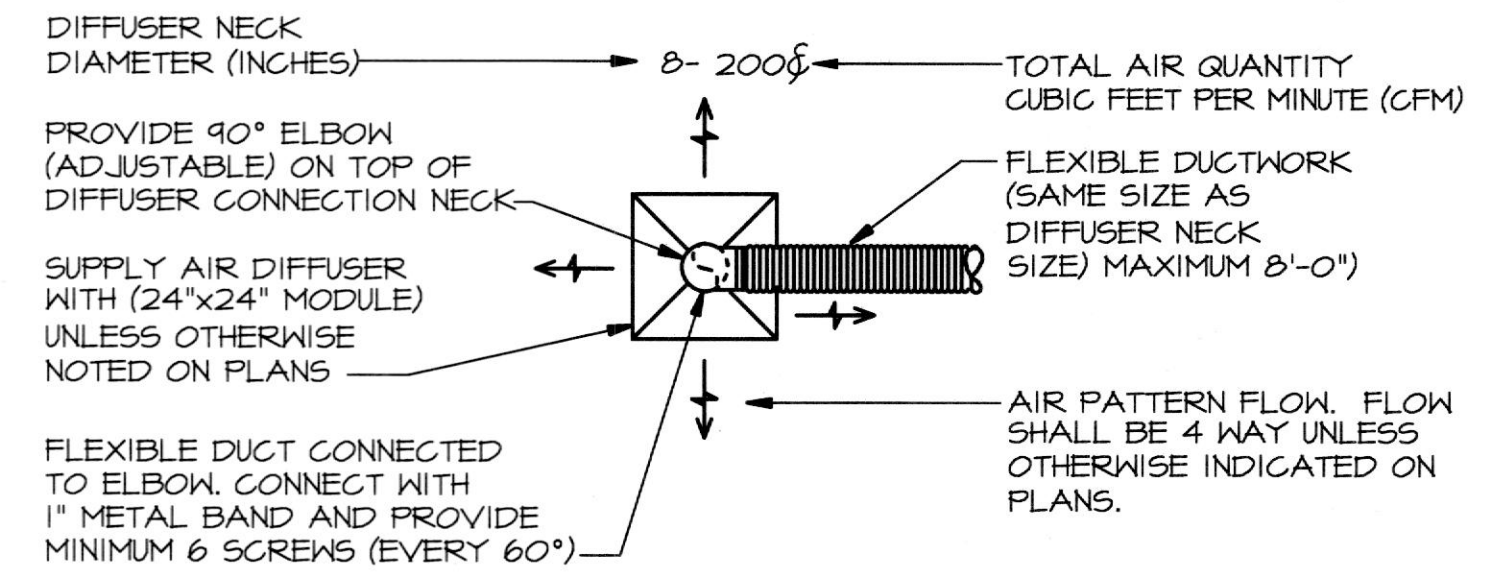
**CEILING MOUNTED EXHAUST FAN DETAIL**  
 NO SCALE

NOTE:  
 1) PROVIDE VARIABLE SPEED SWITCH ON THE SIDE OF THE CASING FOR FINAL AIR BALANCE.

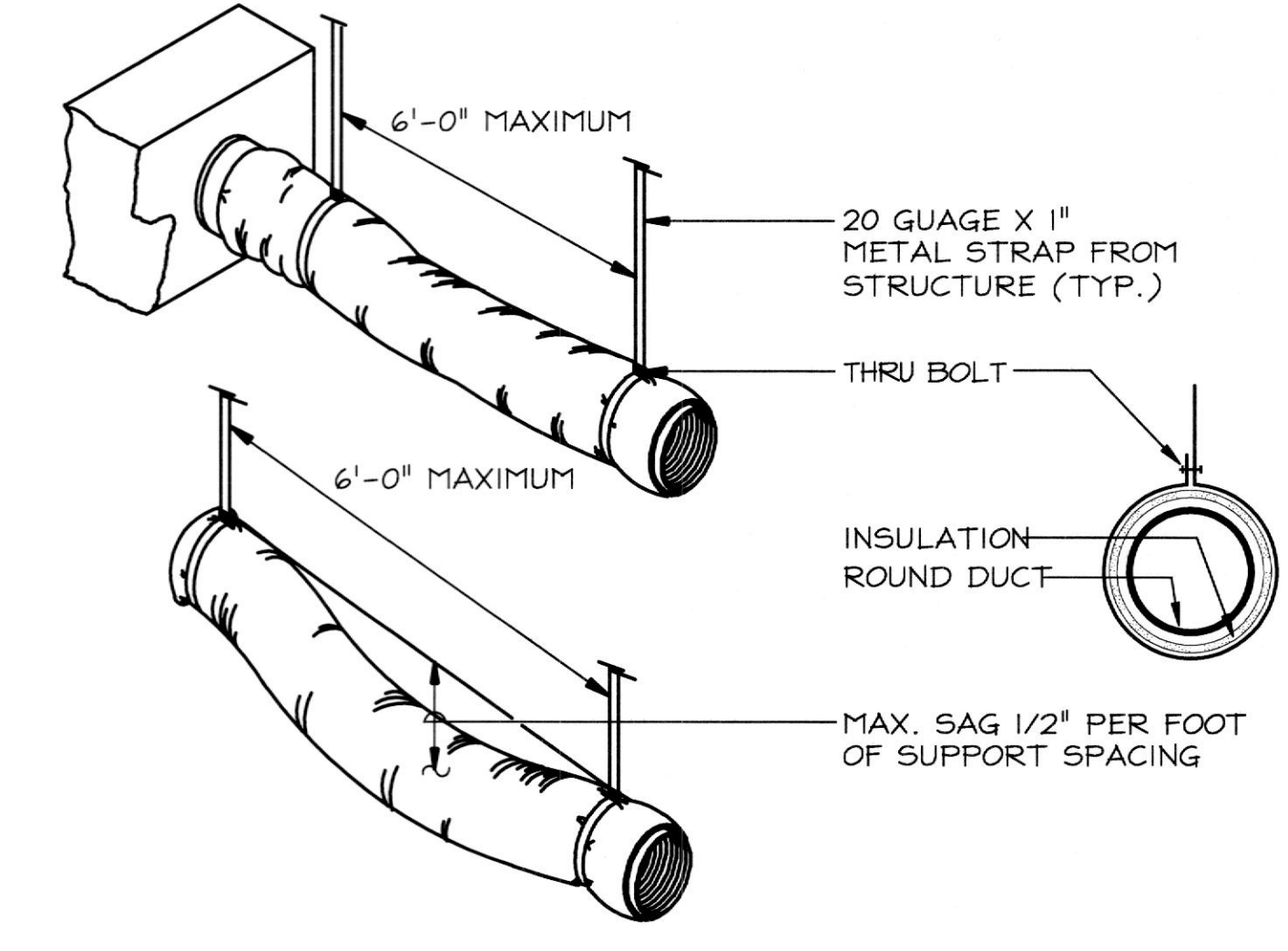


**ROOF MOUNTED EXHAUST FAN DETAIL**  
 NO SCALE

NOTES:  
 1) ROOF CURBS MUST BE DESIGNED FOR STANDING SEAM METAL ROOF INSTALL.

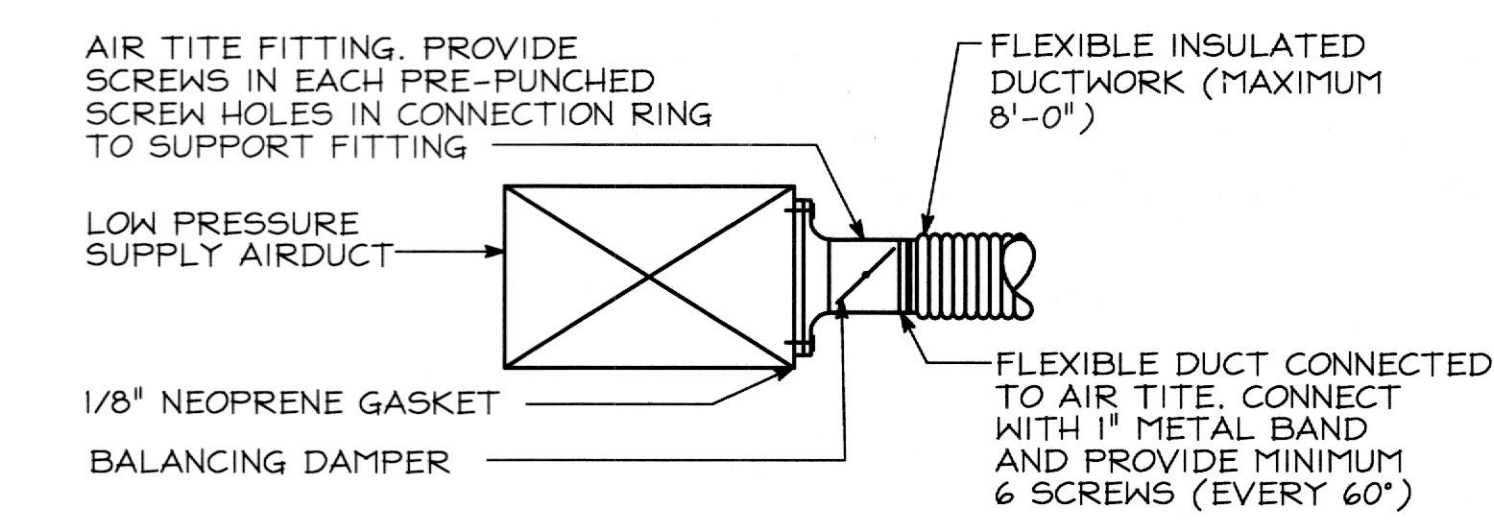


**SUPPLY AIR DIFFUSER KEY**  
 NO SCALE



**FLEXIBLE DUCT RUN-OUT SUPPORT DETAIL**  
 NO SCALE

NOTES:  
 1) FLEXIBLE DUCT SHOULD EXTEND STRAIGHT FOR SEVERAL INCHES FROM RECTANGULAR DUCT CONNECTION BEFORE BENDING.  
 2) FLEXIBLE DUCT SHOULD NOT EXCEED 6\"/>

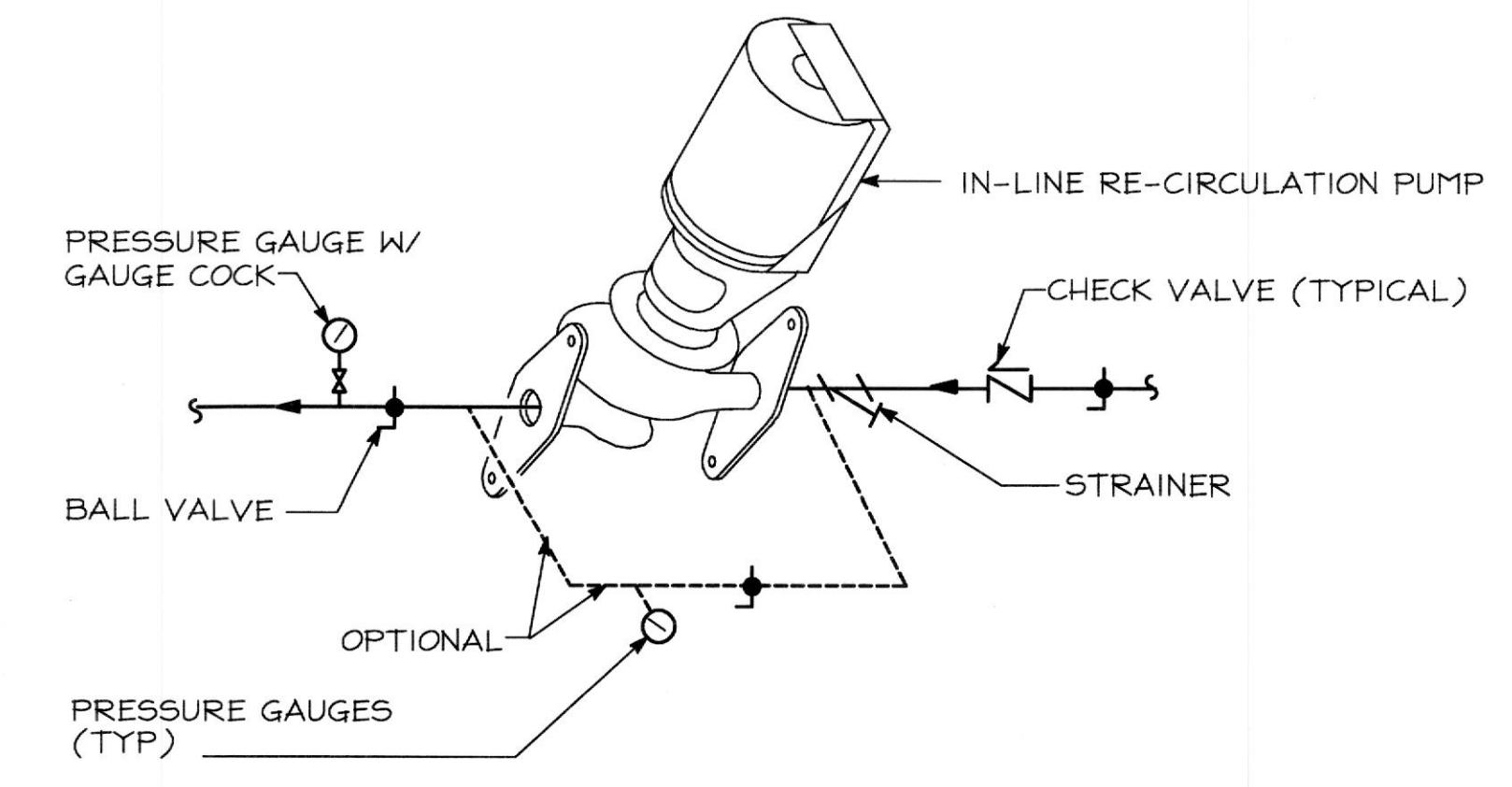


**AIR TITE FITTING DETAIL**  
 NO SCALE

**AIR TITE SIZE CHART**

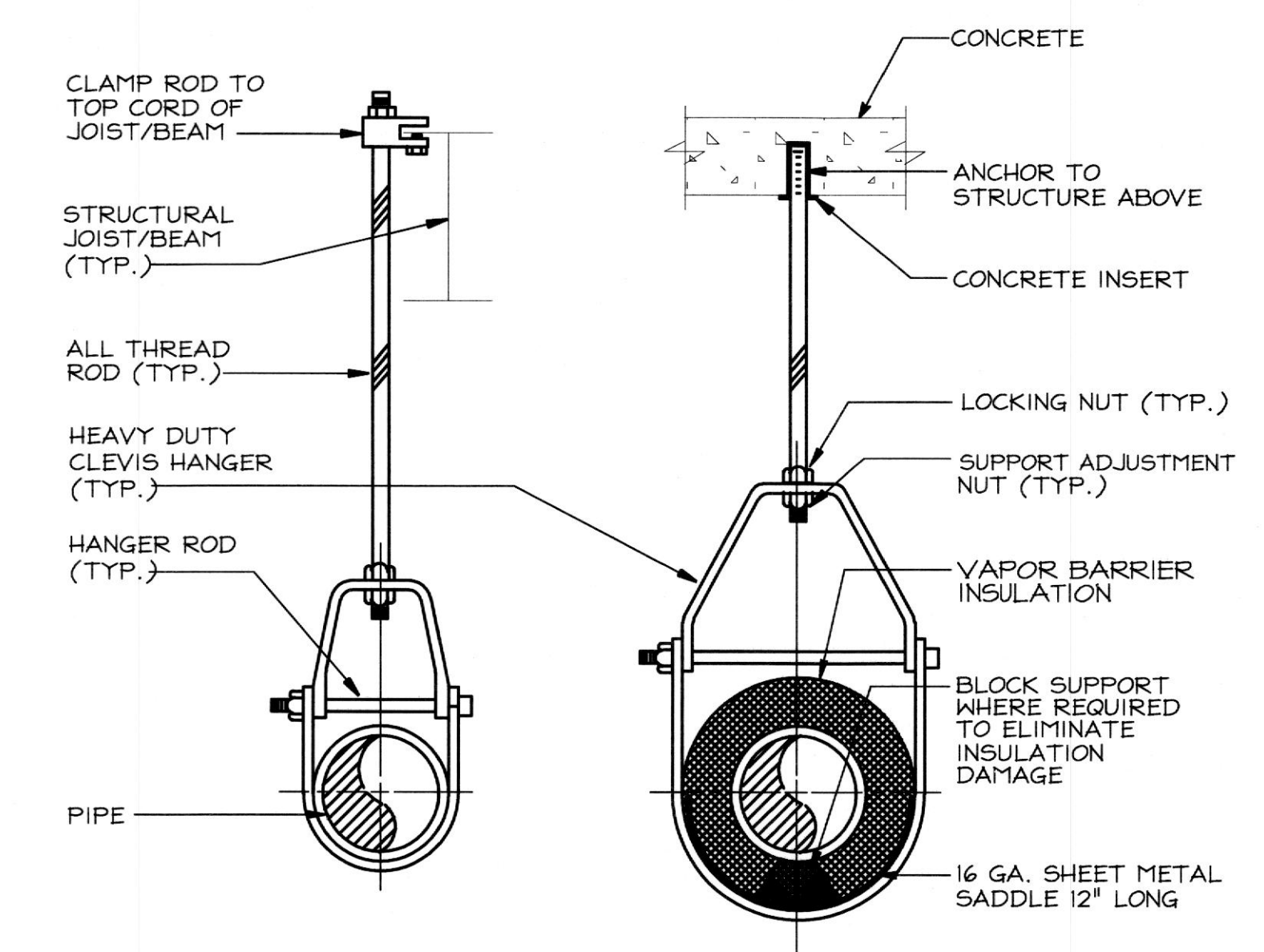
DUCTSIZE	CONNECTION RING	DUCTSIZE	CONNECTION RING
5"	8"	9"	12"
6"	9"	10"	13"
7"	10"	11"	14"
8"	11"	12"	15"

NOTE:  
 1) WHERE CONNECTION RING SIZE IS LARGER THAN SUPPLY DUCT, THEN CONNECTION RING SHALL BE CRIMPED OVER DUCT AND CONNECTED, SCREWED AND SEALED ON TOP AND BOTTOM OF SUPPLY DUCT.



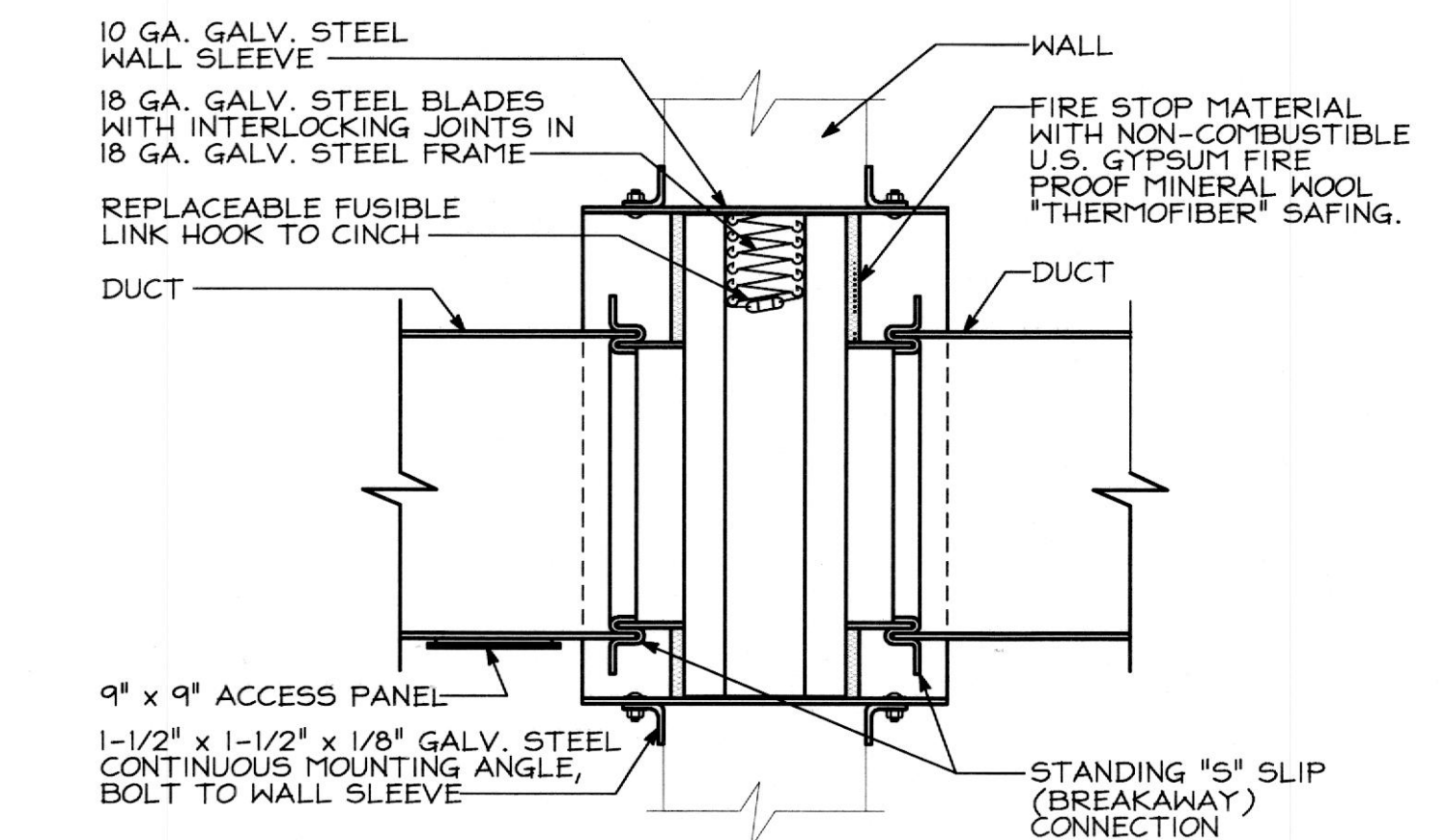
**IN-LINE RE-CIRCULATING PUMP PIPING**  
 NO SCALE

NOTE:  
 1) CONTRACTOR TO PROVIDE AND INSTALL CIRCULATING TIMER FOR PUMP THAT COMPLIES WITH IECC 2000 EDITION SECTION 804.



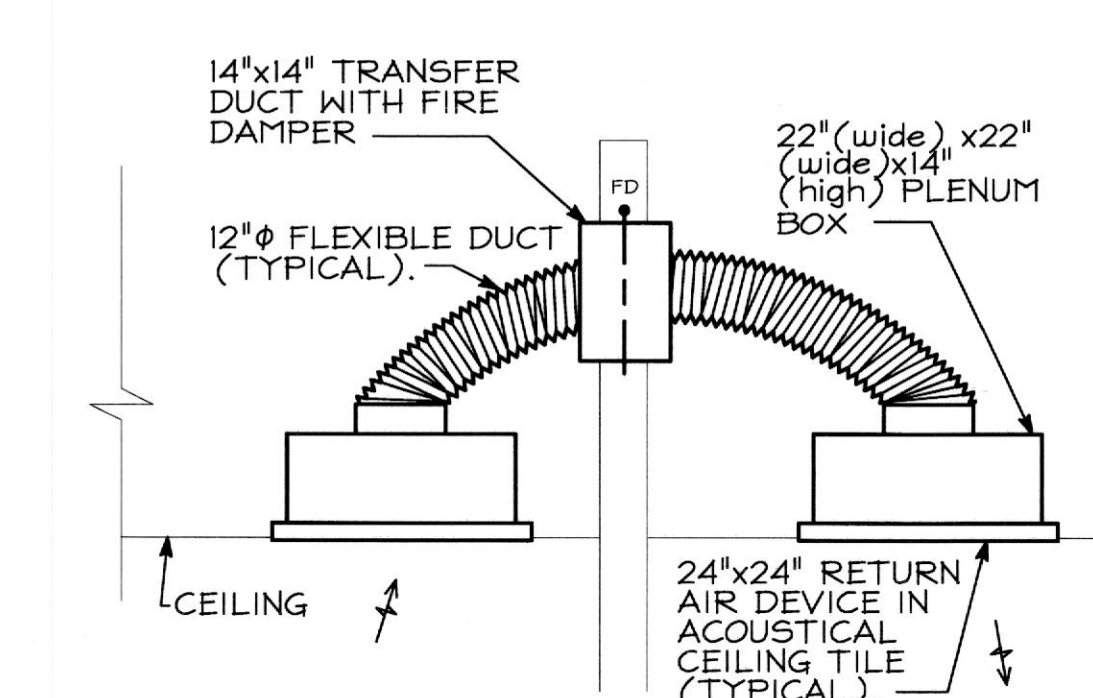
**PIPE SUPPORT DETAIL**  
 NO SCALE

NOTE:  
 1) ALL HANGERS FOR COPPER PIPING SHALL BE COPPER COATED.

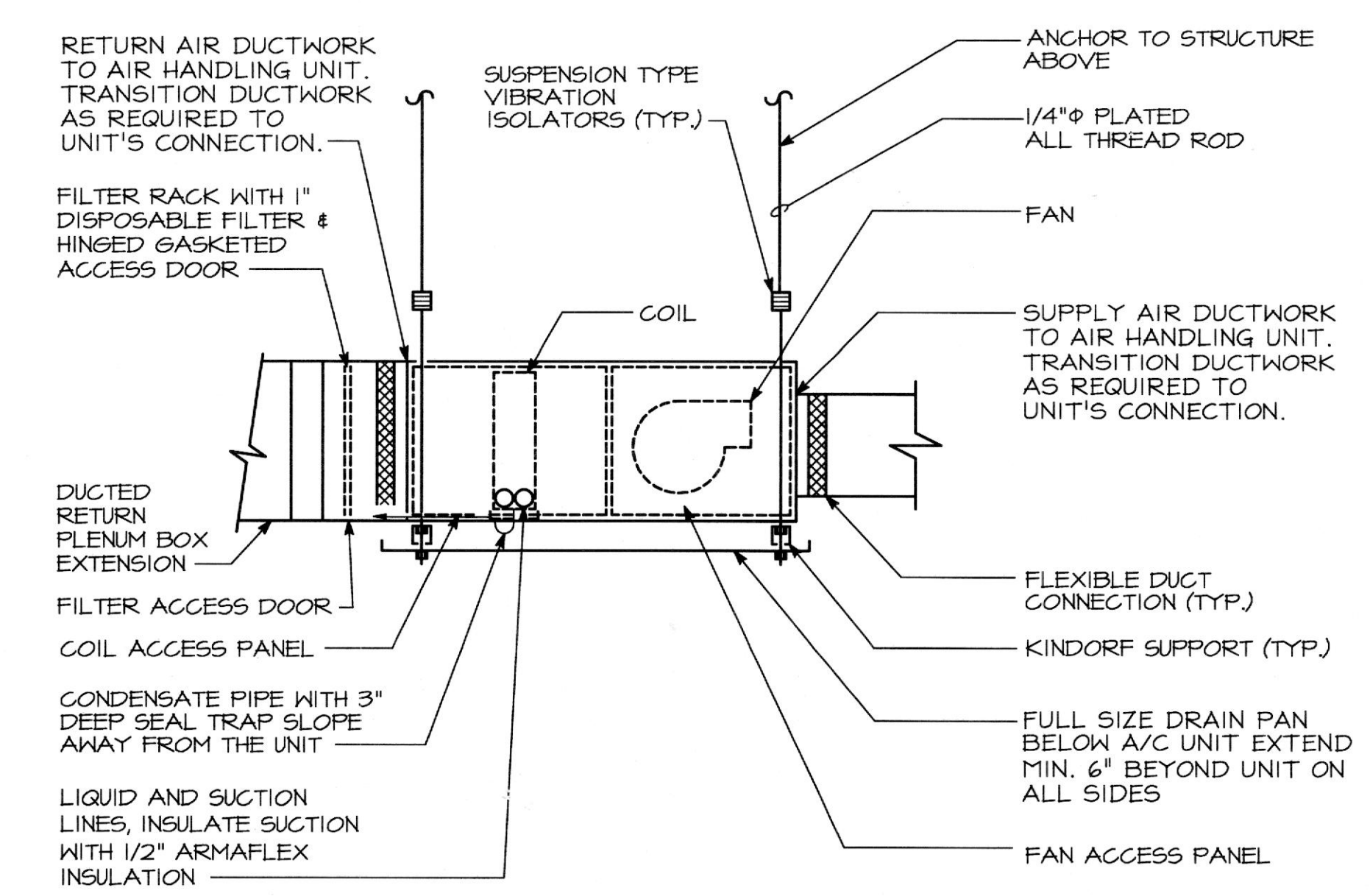


**HORIZONTAL DUCT FIRE DAMPER DETAIL**  
 NO SCALE

NOTES:  
 1. FIRE DAMPERS TO HAVE BREAKAWAY JOINT BETWEEN COLLARS AND DUCT. (COLLARS SHALL BE INTEGRAL WITH FIRE DAMPERS FRAME.)  
 2. FIRE DAMPER SHALL BE U.L. LABELED.  
 3. ACCESS PANELS ARE REQUIRED FOR EVERY FIRE DAMPER LOCATION. THIS MUST BE CLEARLY/NEATLY IDENTIFY ON THE CEILING GRID WITH 1/2\"/>

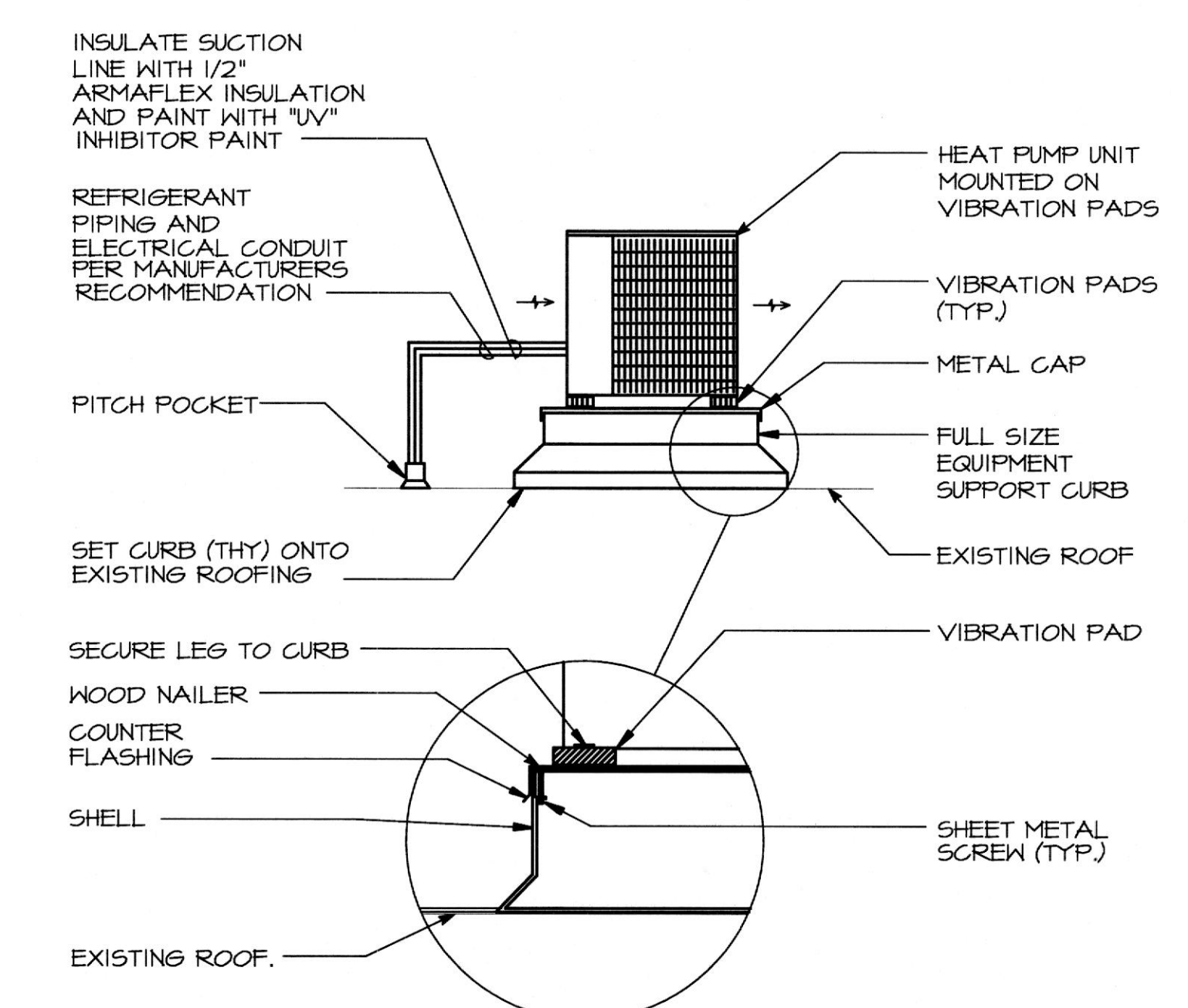


**AIR TRANSFER ASSEMBLY WITH FIRE DAMPER**  
 NO SCALE



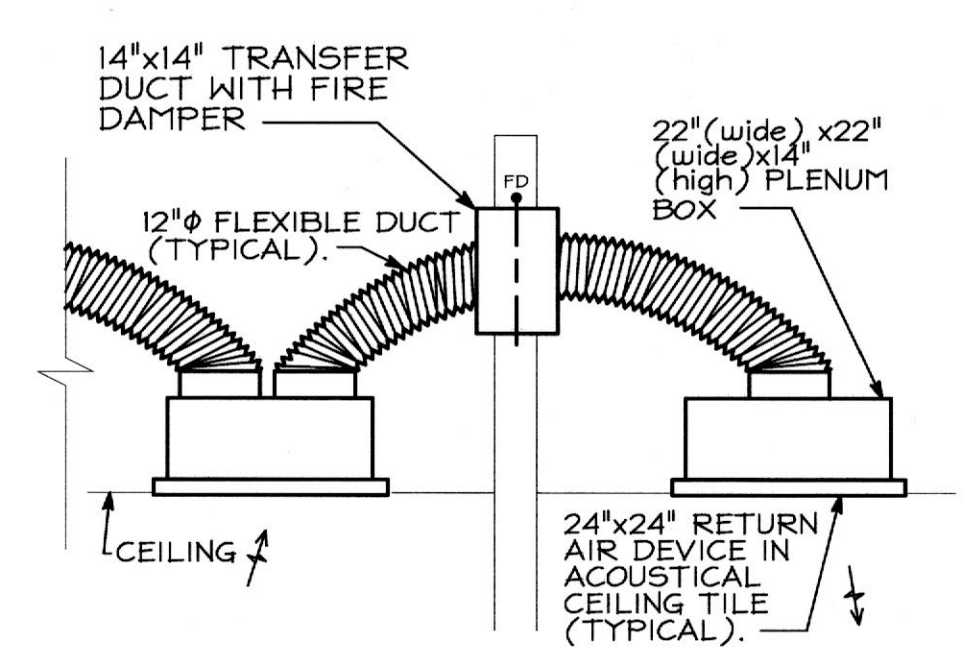
**HORIZONTAL AIR HANDLING UNIT MOUNTING DETAIL**  
 NO SCALE

NOTE:  
 1) PRIOR TO INSTALL VERIFY WITH THE LANDLORD'S STRUCTURE ENGINEER FOR EXACT MOUNTING LOCATION. ALSO VERIFY NEW AND EXISTING STRUCTURAL SUPPORTS FOR THE AIR HANDLING UNITS.



**ROOF MOUNTED HEAT PUMP UNIT DETAIL**  
 NO SCALE

NOTES:  
 1) PRIOR TO INSTALL OF THE THY CURBS ON THE ROOF THE MECHANICAL CONTRACTOR IS TO COORDINATE/CONSULT WITH THE LANDLORD'S ROOFING TO PROPERLY SECURE THE THY CURBS TO THE ROOF.  
 2) PRIOR TO INSTALL VERIFY WITH THE LANDLORD'S STRUCTURE ENGINEER FOR EXACT MOUNTING LOCATION.



**AIR TRANSFER ASSEMBLY WITH FIRE DAMPER**  
 NO SCALE