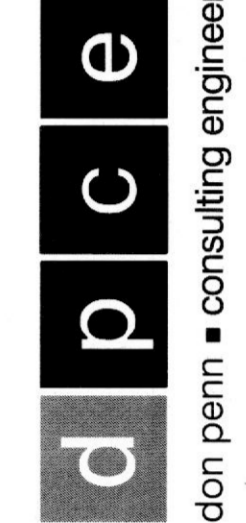




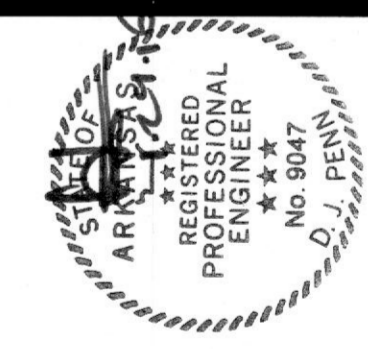
711 N. FLEDER RD.  
 ARLINGTON, TX 76012  
 PH: (817) 635-5696  
 FAX: (817) 635-5699

6505 Westport Parkway  
 Suite 300  
 Grapevine, Texas 76051  
 PH: (817) 251-8808  
 FAX: (817) 251-8411



Lifeline Project Manager  
 In Sync  
 1215 Old Pyleville Road Whiteford, MD 21160  
 Office 410-452-6006 Fax 410-452-6046

ACCESS CENTER  
 LIFELINE  
 11771 Maumelle Blvd  
 North Little Rock, AR 72113



REVISIONS

'A'	ISSUE DATE
'B'	ISSUE DATE
'C'	ISSUE DATE
'D'	ISSUE DATE
'E'	ISSUE DATE
'F'	ISSUE DATE

FLOOR PLAN - LIGHTING AND DEMOLITION

SHEET NUMBER

E2



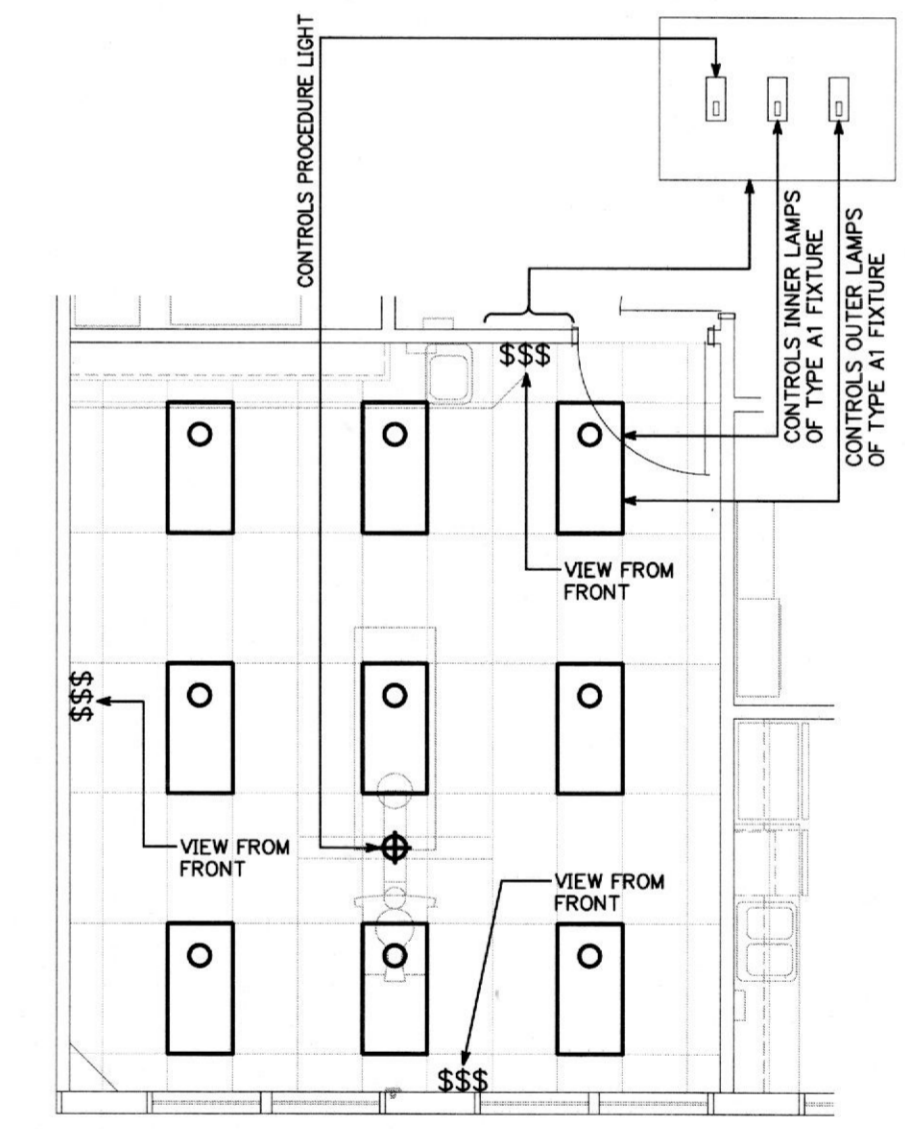
OCCUPANCY SENSORS

TYPE	MOUNTING	DESCRIPTION	VOLTAGE	CATALOG NO.
⊕	CEILING	UNIVERSAL VOLTAGE POWER PACK. PROVIDE JUNCTION BOX.	120/277V	WATT STOPPER BZ-150
⊕	CEILING	DUAL TECHNOLOGY PASSIVE INFRARED AND ULTRASONIC CEILING SENSOR FOR OPEN AREAS	120/277V	WATT STOPPER DT-30S CEILING SENSOR
⊕	WALL	DUAL TECHNOLOGY PASSIVE INFRARED AND ULTRASONIC WALL SWITCH SENSOR	120/277V	WATT STOPPER DW-100
⊕	CEILING	DUAL TECHNOLOGY PASSIVE INFRARED AND ULTRASONIC SENSOR. MAXIMUM LOAD 60W.	120/277V	WATT STOPPER DT-35S LINE VOLTAGE CEILING SENSOR

LIGHTING FIXTURE SCHEDULE

TYPE	LAMPS	INPUT WATTS	MOUNTING	DESCRIPTION	VOLTS	CATALOG NO.
A	2-F032TB 41K	56W	RECESSED CEILING GRID	2x4 RECESSED FLUORESCENT WITH ACRYLIC PRISMATIC LENS AND ELECTRONIC BALLAST	UNIVERSAL 120-277V	LITHONIA # 2018-232-A12125-MVOLT-GEBIORS
A1	4-F032TB 41K	110W	SURFACE DRYWALL	2'x4' SURFACE FLUORESCENT TROFFER WITH ACRYLIC PRISMATIC LENS, FULLY GASKETED FLUSH STEEL DOOR AND TWO ELECTRONIC BALLAST(2 LAMP), FOR DUAL LIGHT LEVEL	UNIVERSAL 120-277V	LITHONIA # 2M-432-A12125-MVOLT-GEBIORS
A2	2-F032TB 41K	56W	RECESSED CEILING GRID	2x4 RECESSED FLUORESCENT WITH ACRYLIC PRISMATIC LENS WITH ELECTRONIC AND EMERGENCY BALLASTS	UNIVERSAL 120-277V	LITHONIA # 2018-232-A12125-MVOLT-GEBIORS-EL14
C	1-F032TB 41K	28W	SURFACE	5'5/8"x48" FLUORESCENT WITH WRAP AROUND ACRYLIC PRISMATIC DIFFUSER AND ELECTRONIC BALLAST	UNIVERSAL 120-277V	MOERN # 772-1-32-ELO-DT
C1	1-F025TB 41K	25W	SURFACE	5'5/8"x36" FLUORESCENT WITH WRAP AROUND ACRYLIC PRISMATIC DIFFUSER AND ELECTRONIC BALLAST	UNIVERSAL 120-277V	MOERN # 772-1-25-ELO-DT
G	INCLUDED	-	SURFACE	OPERATING LIGHT WITH FLEXIBLE ARM AND INTEGRAL SWITCH	120V	FURNISHED BY OWNER
X	LED	.5W	UNIVERSAL	LED "X-RAY IN USE" SIGN WITH WHITE HOUSING, RED LETTERS	120V	LITHONIA # LOM P WR120M "X-RAY IN USE"
E1	LED	1.0W	UNIVERSAL (TOP, END BACK)	LED EMERGENCY EXIT SIGN WITH WHITE HOUSING AND INTEGRAL BATTERY / CHARGER REFER TO FLOOR PLANS FOR MOUNTING AND LOCAL CODES FOR COLOR OF LETTERS.	120/277V	LITHONIA LOM SERIES
E2	2-1.5W LED	1.4W	SURFACE WALL OR CEILING	6 VOLT LED EMERGENCY BATTERY LIGHT WITH TWIN LAMPS, WHITE THERMOPLASTIC HOUSING AND INTEGRAL LEAD CALCIUM BATTERY	120/277V	LITHONIA # QUANTUM SERIES ELM2ED
E3	LED	4.3W	UNIVERSAL (TOP, END BACK)	SELF POWERED COMBINATION LED EXIT / 2 LAMP EMERGENCY LIGHT WITH INTEGRAL HIGH OUTPUT BATTERY AND CHARGER. ARROWS AND FACING AS SHOWN - LETTER COLOR PER LOCAL CODE.	120/277V	LITHONIA # LHOMLED/2GHO
E4	2-1.5W LED	-	WEATHERPROOF WALL	TWIN HEAD WEATHERPROOF LED REMOTE EMERGENCY LIGHTING HEAD, SEALED AND GASKETED, WHITE FINISH.	120/277V	LITHONIA # ELA-T-QWP-L0309

NOTE:  
 ALL LIGHTING FIXTURES SHALL BE APPROVED BY THE OWNER AND ARCHITECT PRIOR TO ORDERING.



3 TYPICAL PROCEDURE ROOM WALL SWITCH DETAIL  
 NO SCALE

2 FLOOR PLAN - DEMOLITION  
 SCALE: 1/16"=1'-0"

GENERAL LIGHTING NOTES:

- ALL LIGHTING FIXTURES ARE TYPE 'A' UNLESS OTHERWISE NOTED.
- MULTIPLE SWITCHES AT ONE (1) LOCATION SHALL BE GANGED TOGETHER AND HAVE ONE (1) SWITCH PLATE.
- MOUNT ALL SWITCHES 42" A.F.F. COORDINATE WITH ARCHITECT PRIOR TO ROUGH-IN.
- REFER TO TYPICAL PROCEDURE ROOM WALL SWITCH DETAIL ON THIS DRAWING FOR LIGHT SWITCH CONTROL.
- CONNECT EXIT LIGHTS, EMERGENCY BATTERY UNITS AND NIGHT LIGHTS (NL) TO THE UNSWITCHED PORTION OF LOCAL BRANCH LIGHTING CIRCUIT SERVING RESPECTIVE AREA.
- FIXTURES WITH EMERGENCY BALLAST (EB) SHALL BE WIRED PER MANUFACTURERS PRINTED INSTALLATION INSTRUCTIONS SO THAT IN THE EVENT OF A POWER FAILURE THE FIXTURE ENERGIZES REGARDLESS OF SWITCH POSITION.
- CERTIFICATION FOR ALL ELECTRICAL WORK AND EQUIPMENT SHALL BE IN COMPLIANCE WITH ALL APPLICABLE LOCAL CODES AND LAWS AND ALL MATERIALS ARE CURRENTLY APPROVED AND LISTED BY A RECOGNIZABLE TESTING LABORATORY.

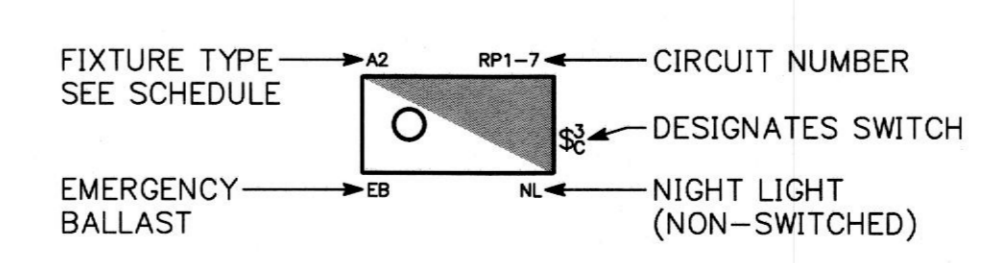
DRAWING NOTES:

- ONE SWITCH SHALL CONTROL THE INNER LAMPS AND ONE SWITCH SHALL CONTROL THE OUTER LAMPS FOR 50% LIGHT LEVEL OF THE 2X4 FIXTURES.
- OWNER SHALL BE RESPONSIBLE FOR FURNISHING AND INSTALLING LIGHT FIXTURE INDICATED. ELECTRICAL CONTRACTOR SHALL BE RESPONSIBLE FOR MAKING ALL FINAL ELECTRICAL CONNECTIONS.
- IF REQUIRED, ELECTRICAL CONTRACTOR SHALL PROVIDE AND INSTALL JUNCTION BOX AND WEATHERPROOF SWITCH FOR TENANT EXTERIOR BUILDING MOUNTED SIGN. COORDINATE LOCATION IN FIELD.
- DISCONNECT AND REMOVE ALL PANELBOARDS, LIGHTS, RECEPTACLES, EMERGENCY BATTERY UNITS, EXIT SIGNS, FIRE ALARM DEVICES, ETC. FROM EXISTING SPACE BEING DEMOED UNLESS OTHERWISE NOTED TO REMAIN ON PLANS. REMOVE ALL ASSOCIATED WIRING AND CONDUIT BACK TO SOURCE.

COORDINATION NOTES:

- REFER TO ARCHITECTURAL DRAWINGS FOR ADDITIONAL JOB SPECIFIC NOTES.
- MECHANICAL, PLUMBING AND ELECTRICAL SUBCONTRACTORS ARE REQUIRED TO COORDINATE WITH EACH OTHER AND TO REFER TO ALL SHEETS IN THE SET FOR CONSTRUCTION CONDITIONS, NOT JUST THE DRAWINGS PERTAINING TO THEIR DISCIPLINE.
- FINAL LOCATION OF ALL SURFACE FEATURES ARE TO BE VERIFIED WITH ARCHITECTURAL DRAWINGS AND/OR ARCHITECT PRIOR TO INSTALLATION.
- ALL EXPOSED PIPE, CONDUIT, DUCTWORK TO BE PREPPED BY TRADE FOR PRIME AND FINAL PAINT BY G.C. SEE ARCHITECTURAL SPECIFICATIONS.

TYPICAL FIXTURE LEGEND



1 FLOOR PLAN - LIGHTING  
 SCALE: 1/4"=1'-0"

