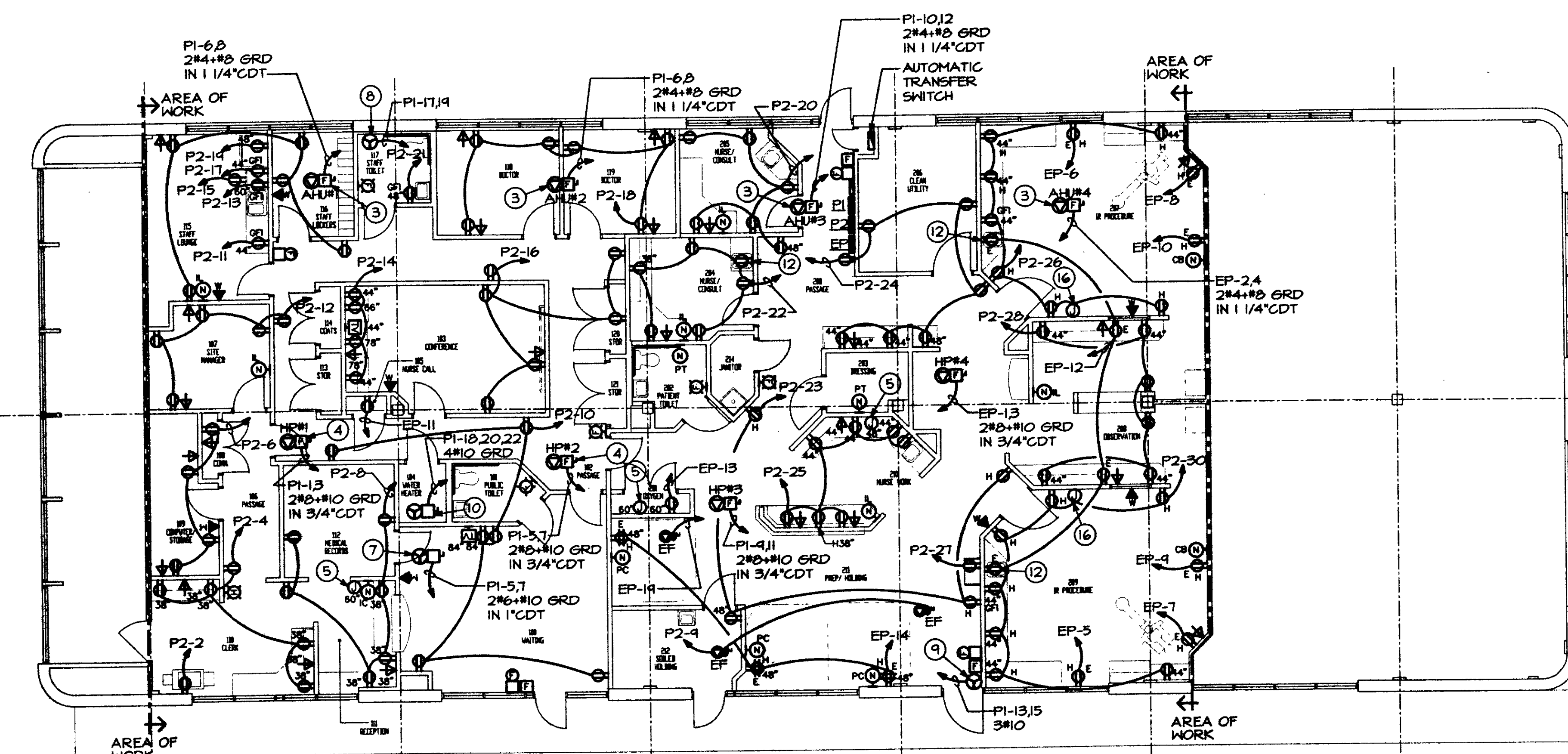


GROUND FLOOR -
LIGHTING PLAN
SCALE: 1/8"=1'-0"



GROUND FLOOR -
POWER PLAN
SCALE: 1/8"=1'-0"

DRAWING NOTES

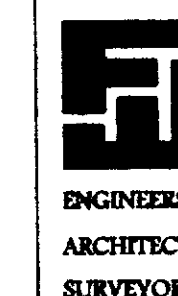
- ALL LIGHTING FIXTURES SHALL TYPE "A" UNLESS NOTED OTHERWISE.
- CONNECT EXIT SIGNS AND EMERGENCY BATTERY UNITS TO THE UNSWITCHED PORTION OF THE LIGHTING CIRCUIT SERVING THAT RESPECTIVE AREA.
- EXISTING HEAT PUMP UNIT ON THE ROOF.
- EXISTING AIR HANDLING UNIT IN THE CEILING SPACE.
- PROVIDE A FLUSH MOUNTED JUNCTION BOX WITH 3/4" CONDUIT TO CEILING FLENUM SPACE FOR LOW VOLTAGE EQUIPMENT WIRING.
- NURSE CALL SYSTEM DEVICE LOCATION. CONTRACTOR SHALL PROVIDE JUNCTION BOXES AND EMPTY RACEWAY FOR NURSE CALL SYSTEM TO BE INSTALLED BY OTHERS. EXTEND CONDUIT FROM EACH OUTLET LOCATION TO CEILING SPACE ABOVE. COORDINATE ALL WORK WITH OWNER'S VENDOR, EXPEDITOR SYSTEMS (1-800-843-4651).
- ELECTRIC DUCT HEATER - 8.0KW, 208 VOLTS 1Ø.
- WALL HEATER - 2.0KW, 208 VOLTS 1Ø.
- WALL HEATER - 4.0KW, 208 VOLTS 1Ø.
- WATER HEATER - 6.0KW, 208 VOLTS 3Ø.
- REFER TO ARCHITECTURAL REFLECTED CEILING PLAN FOR GRID COORDINATION AND EXACT LOCATION OF LIGHTING FIXTURES.
- MOUNT RECEPTACLE BELOW SINK TO SERVE INFA-RED AUTOMATIC FAUCET.
- MAKE ALL CONNECTIONS TO EXAMINE LIGHT, FURNISHED BY OWNER, AND ASSOCIATED WALL SWITCH PER MANUFACTURER'S RECOMMENDATIONS. COORDINATE EXACT LOCATION OF WALL SWITCH WITH OWNER.
- MOUNT "IN USE" SIGN OVER DOOR AND INTERLOCK WITH DOOR CONTACT SWITCH SO THAT SIGN ENERGIZES WHEN DOOR IS CLOSED. DOOR SWITCH TO BE EDWARDS #503A.
- PROVIDE NEW FIRE ALARM DEVICE TO MATCH EXISTING BUILDING FIRE ALARM SYSTEM. MAKE ALL CONNECTIONS/ MODIFICATIONS AS REQUIRED.
- PROVIDE 120 VOLTS CONNECTION TO VIEW BOX, FURNISHED BY OWNER. COORDINATE MOUNTING HEIGHT WITH ARCHITECT.

NURSE CALL SYSTEM

TYPE	LOCATION	DESCRIPTION/VOLTAGE
P	PATIENT PREP/ RECOVERY	POSITION HELP CALL ON PENDANT WITH LINEN CLIP, RESET BUTTON AT WALL. SEPARATE EMERGENCY CALL ACTIVATED BY REMOVAL OF PENDANT CHORD FROM WALL PANEL (PREFERRED), OR SEPARATE WALL BUTTON. PROVIDE CEILING MOUNTED INDICATION LIGHT IMMEDIATELY OUTSIDE CUBICLE CURTAIN TRACK AT EACH RECOVER/ PREP POSITION.
P	PATIENT TOILET/ DRESSING ROOM	WALL MOUNTED CALL SWITCH ACTIVATED BY PULL ON CHORD. PULL MUST NOT BE CANCELED BY SECOND OR REPEATED PULL ON CHORD. PROVIDE RESET BUTTON ABOVE CHORD ATTACHMENT, OR SIMILAR SEPARATE RESET PROVISION. PROVIDE WALL OR CEILING MOUNTED INDICATION LIGHT/TONE DEVICE OUTSIDE DOOR, LOCATE TO MAXIMIZE STAFF VISIBILITY/NOTIFICATION.
P	OPERATING/ PROCEDURE ROOM	EMERGENCY CALL ("CODE BLUE"), WALL MOUNTED CALL BUTTON WITH HINGED "ELBOW PLATE" TO FACILITATE EMERGENCY ACTIVATION. PROVIDE WALL OR CEILING MOUNTED INDICATION LIGHT/TONE DEVICE OUTSIDE OF DOOR IDENTIFYING TYPE OF CALL, LOCATED TO MAXIMIZE STAFF VISIBILITY/ NOTIFICATION.
P	NURSE WORK/ STAFF LOUNGE/ SITE MANAGER/ NURSE CONSULTANT	ENUNCIATOR PANEL, REGISTERS AND IDENTIFIES CALLS FROM PC, PT, CB AND IC PANELS. ONE LIGHT TONE DEVICE SHOULD A CALL FROM ANY PC PANEL (SLOW FLASH WITH SINGLE TONE FOR GENERAL ASSISTANCE, FAST FLASH AND REPEATED TONE FOR EMERGENCY). ONE LIGHT/TONE DEVICE SHOULD INDICATE A CALL FROM ANY CB PANEL. ONE LIGHT/TONE DEVICE SHOULD INDICATE A CALL FROM THE WAITING ROOM TOILET. ONE LIGHT/TONE DEVICE SHOULD INDICATE A CALL FROM THE RECOVERY AREA. FIVE TOTAL LIGHT/TONE DEVICES.
P	RECEPTION AREA	ENUNCIATOR/CALL PANEL, REGISTERS AND IDENTIFIES EMERGENCY CALLS ONLY FROM PANELS PC, PT AND CB. (BUTTON ASSIGNMENTS SIMILAR TO PANELS "IL"). ALSO PROVIDES EMERGENCY CALL BUTTON TO SIGNAL ALL "IL" PANELS THAT EMERGENCY ASSISTANCE IS REQUIRED IN THE WAITING ROOM.

REV	DATE	REVISIONS

MECHANICAL & ELECTRICAL
DESIGN CONSULTANTS, INC.
1901 N. Fountain Green Road
Bel Air, MD 21015-1411
Office: 410-943-2822
Fax: 410-943-0442
jrdesign@compuserve.net



FREDRICK WARD ASSOCIATES, INC.
P.O. Box 727, 5 South Main Street Bel Air, Maryland 21014-0727
Phone: 410-879-2090 or 410-838-7900 Fax: 410-895-1243
Columbia, Maryland Warrenton, Virginia

TENANT RENOVATIONS FOR:
RMS LIFE LINE
2405 YORK ROAD
TIMONUM, MARYLAND 21093

DATE
10/10/00
SCALE
AS NOTED
DESIGNED BY
TWF
DRAWN BY
TWF
SHEET
2 OF 1
2001216.00
JLR# 20136A