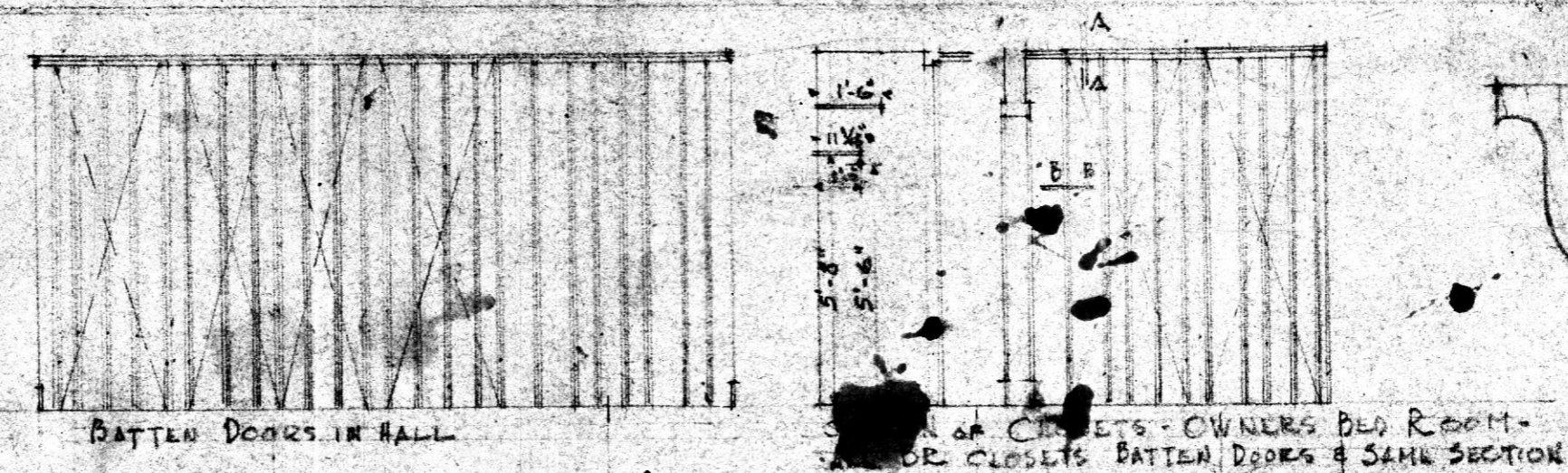


**ELECTRICAL SYMBOLS**

- ⊖ CEILING OUTLET FOR DEORLY 201 2'-6" x 6'-6" x 1 1/8" 6 PANEL W.P.
- ⊖ CEILING 1/2" AUTOMATIC DOOR SWITCH 202 2'-4" x 6'-6" x 1 1/8" " " "
- 203 2'-8" x 6'-6" x 1 1/8" " " "
- 204 2'-0" x 6'-6" x 1 1/8" 3 " W.P.
- 205 2'-6" x 7'-8" x 7/8" BATTEN - SEE DETAIL
- 206 1'-6" x 6'-6" x 1 1/8" 3 PANEL
- 207 2'-4" x 6'-6" CASED OPENING

**DOOR SCHEDULE**

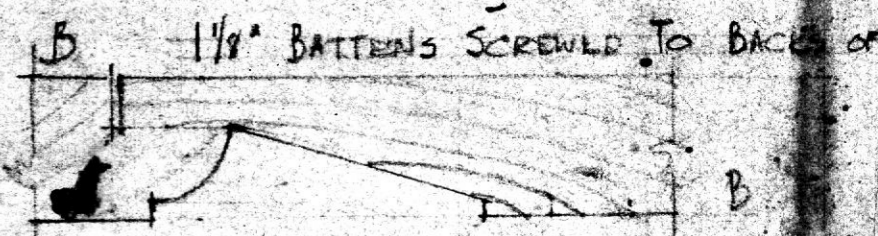
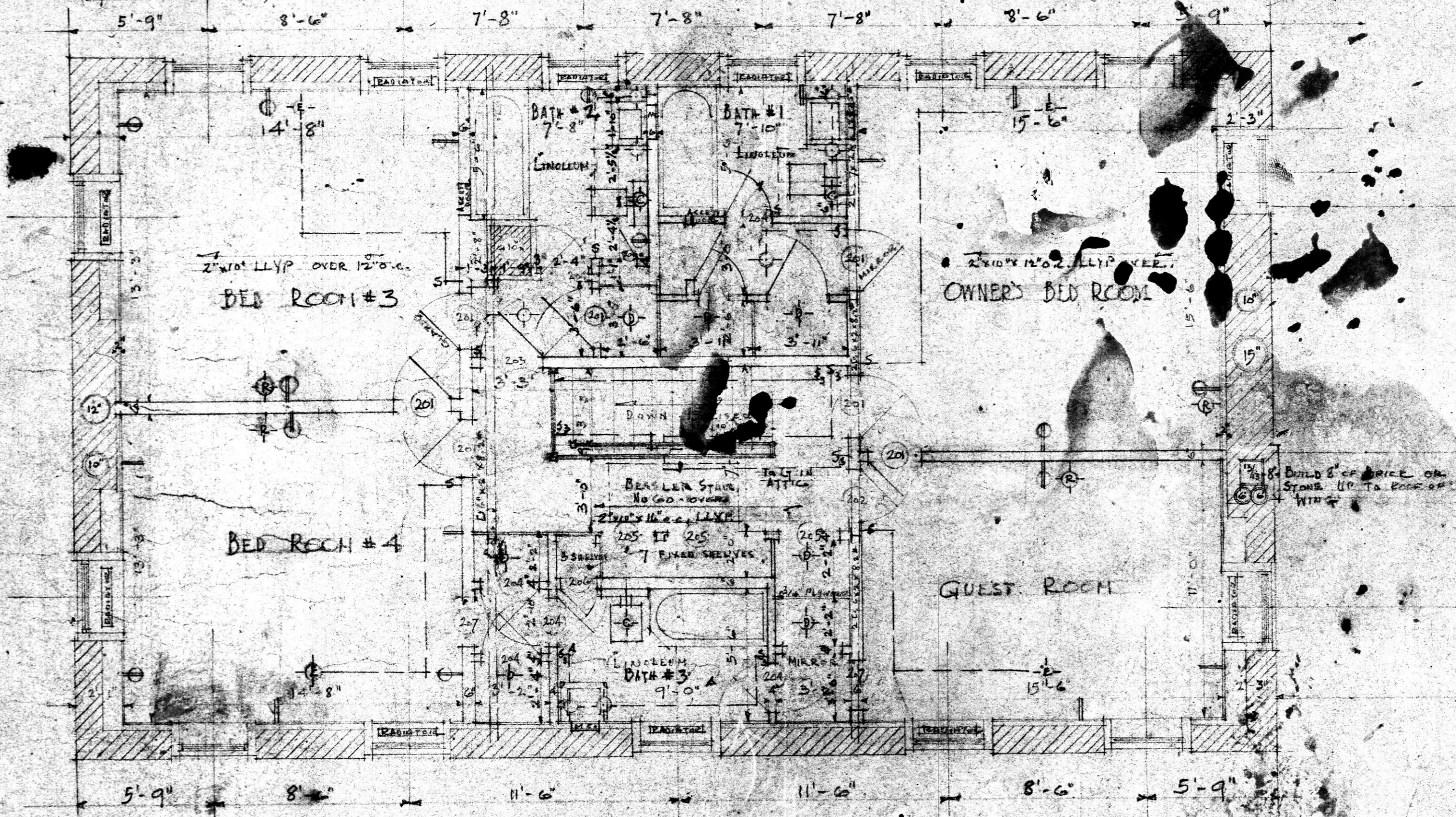
- 201 2'-6" x 6'-6" x 1 1/8" 6 PANEL W.P.
- 202 2'-4" x 6'-6" x 1 1/8" " " "
- 203 2'-8" x 6'-6" x 1 1/8" " " "
- 204 2'-0" x 6'-6" x 1 1/8" 3 " W.P.
- 205 2'-6" x 7'-8" x 7/8" BATTEN - SEE DETAIL
- 206 1'-6" x 6'-6" x 1 1/8" 3 PANEL
- 207 2'-4" x 6'-6" CASED OPENING



House for  
Mr. & Mrs. Francis H. ...  
Riverwood

NO. 117	SHEET 4	DATE 4.8.38
---------	---------	-------------

WRENN, LEWIS AND JENKINS  
ARCHITECTS  
118 W. MURPHY STREET  
BALTIMORE, MD.



BUILD 8\"/>