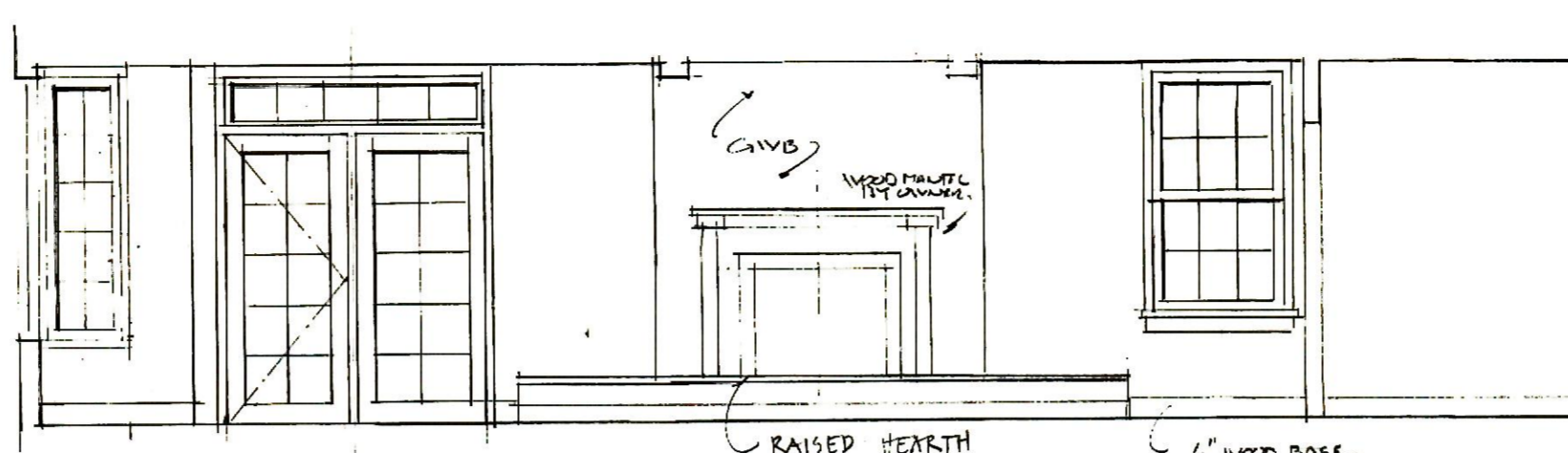
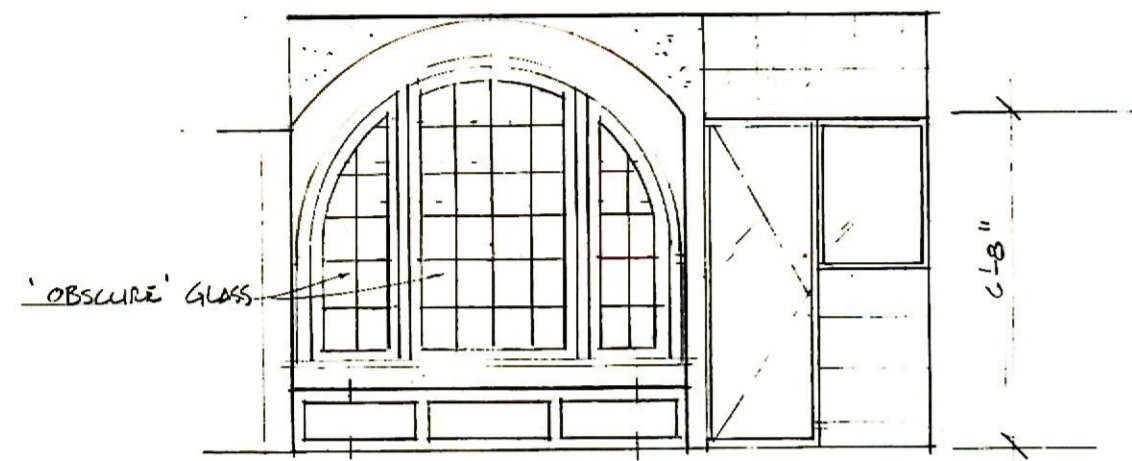


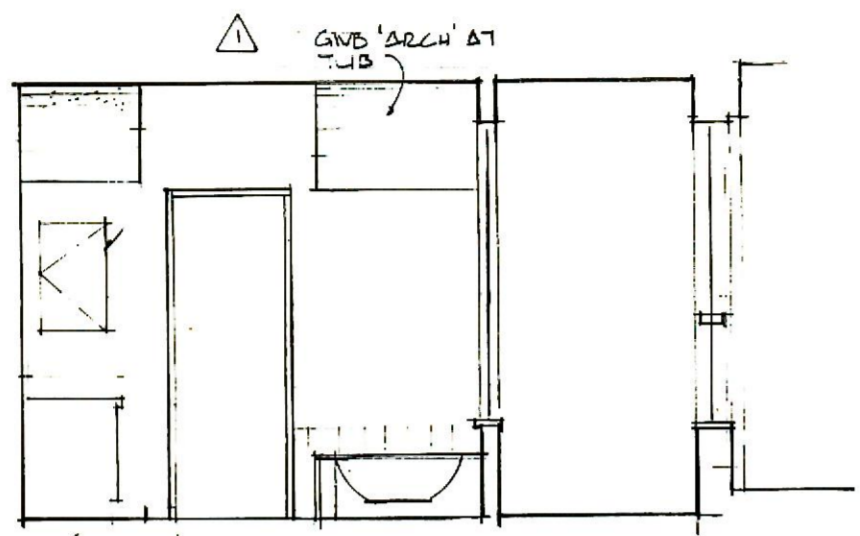
1 FAMILY ROOM



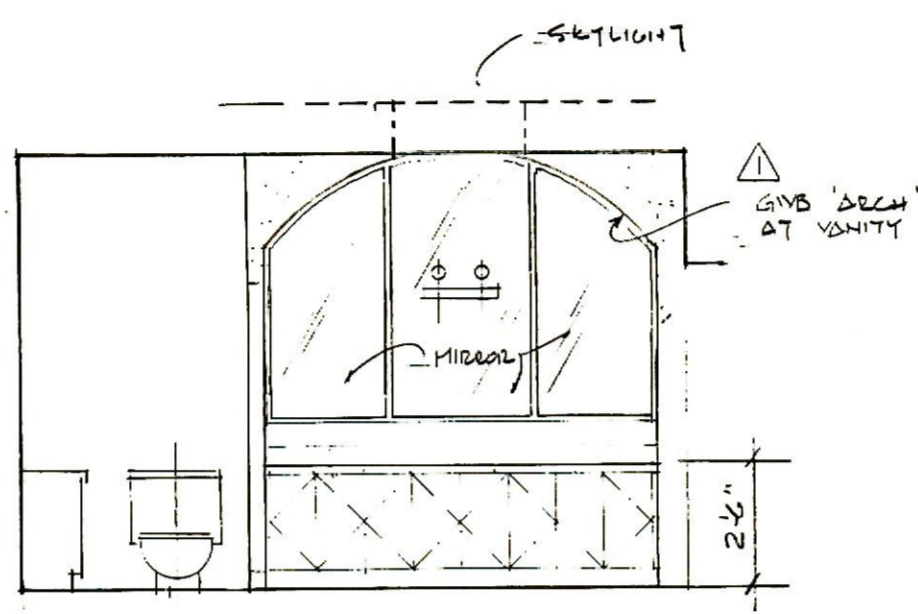
2 FAMILY ROOM



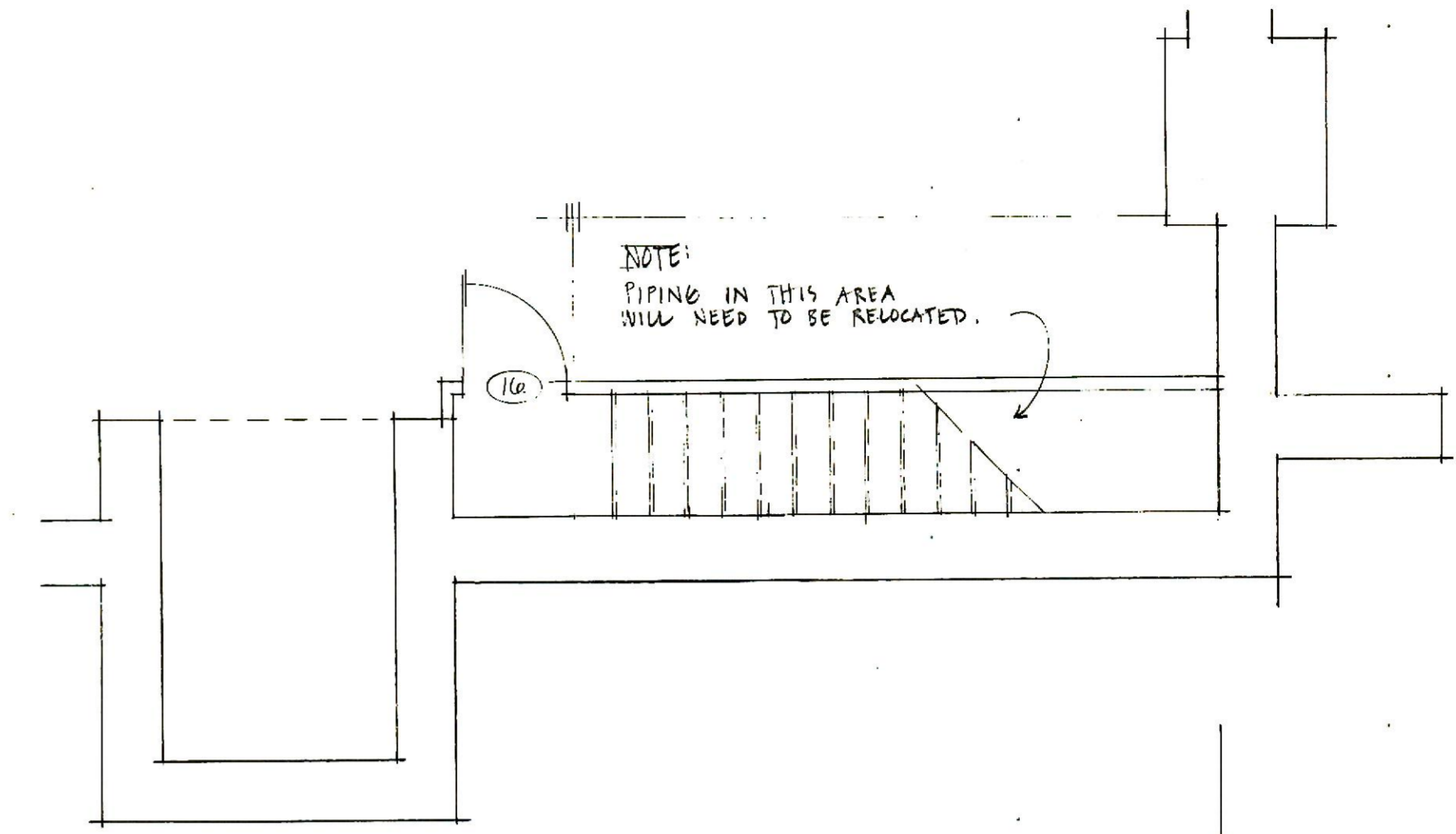
3 BATHROOM



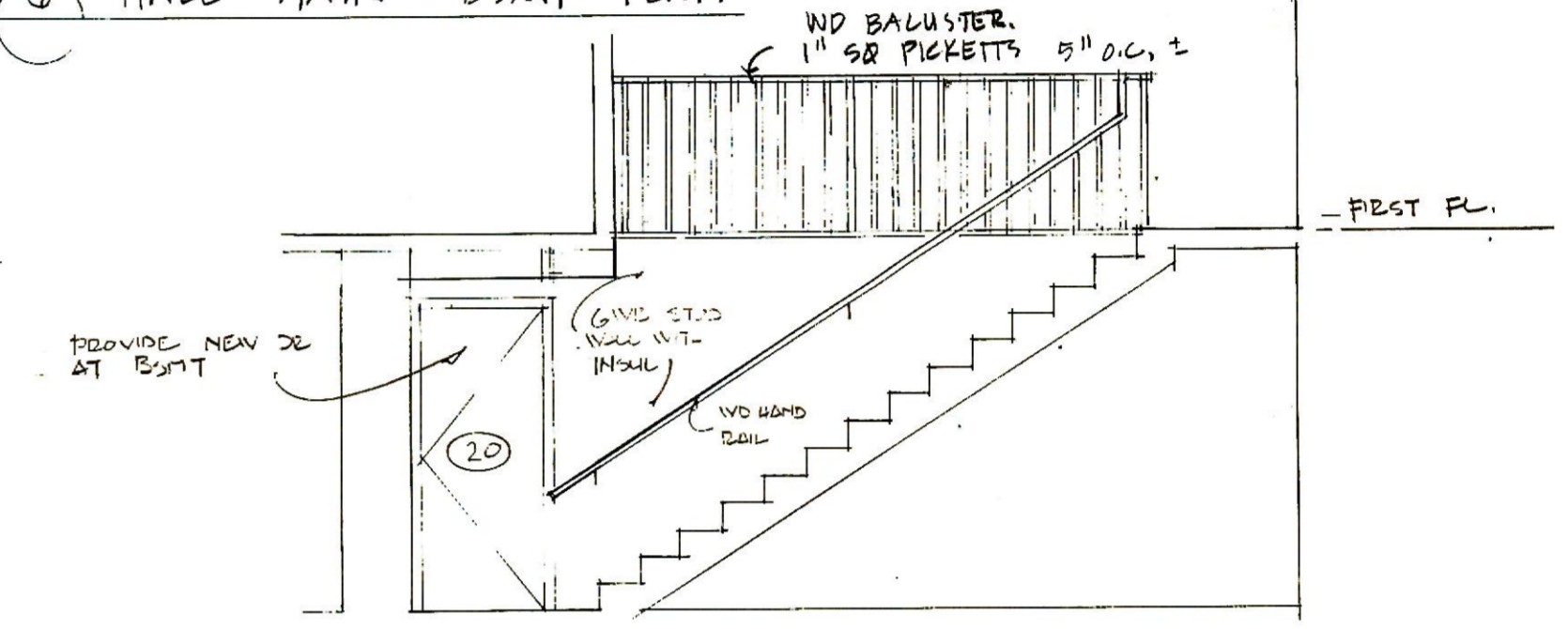
4 BATHROOM



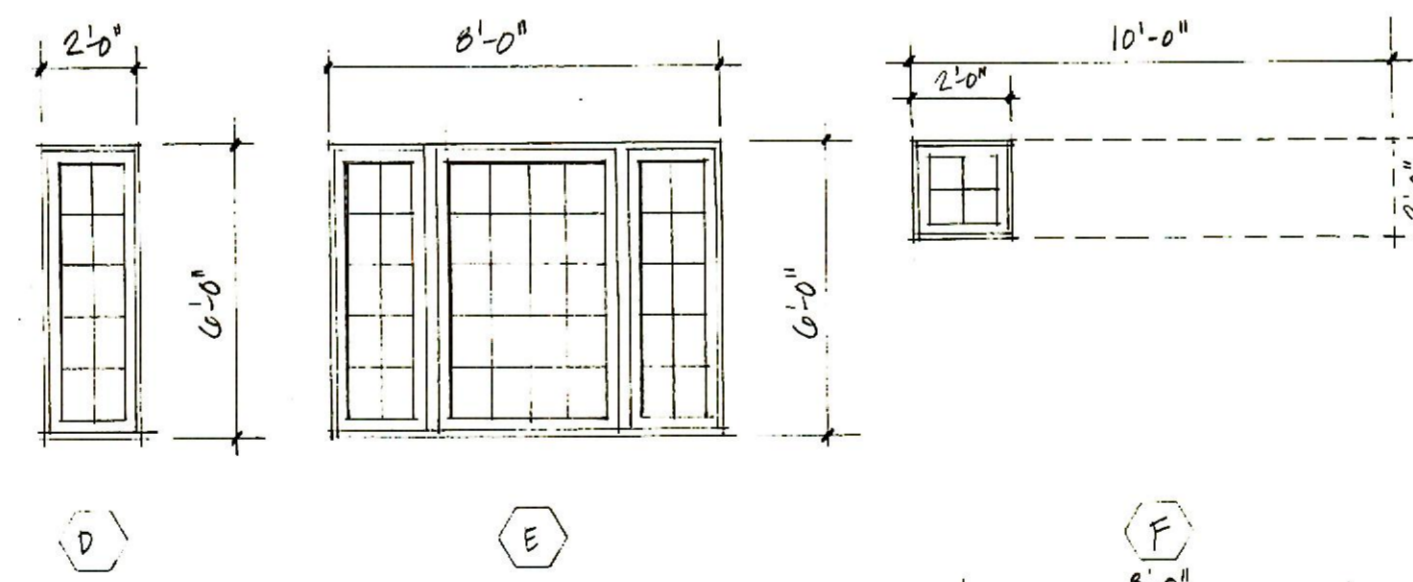
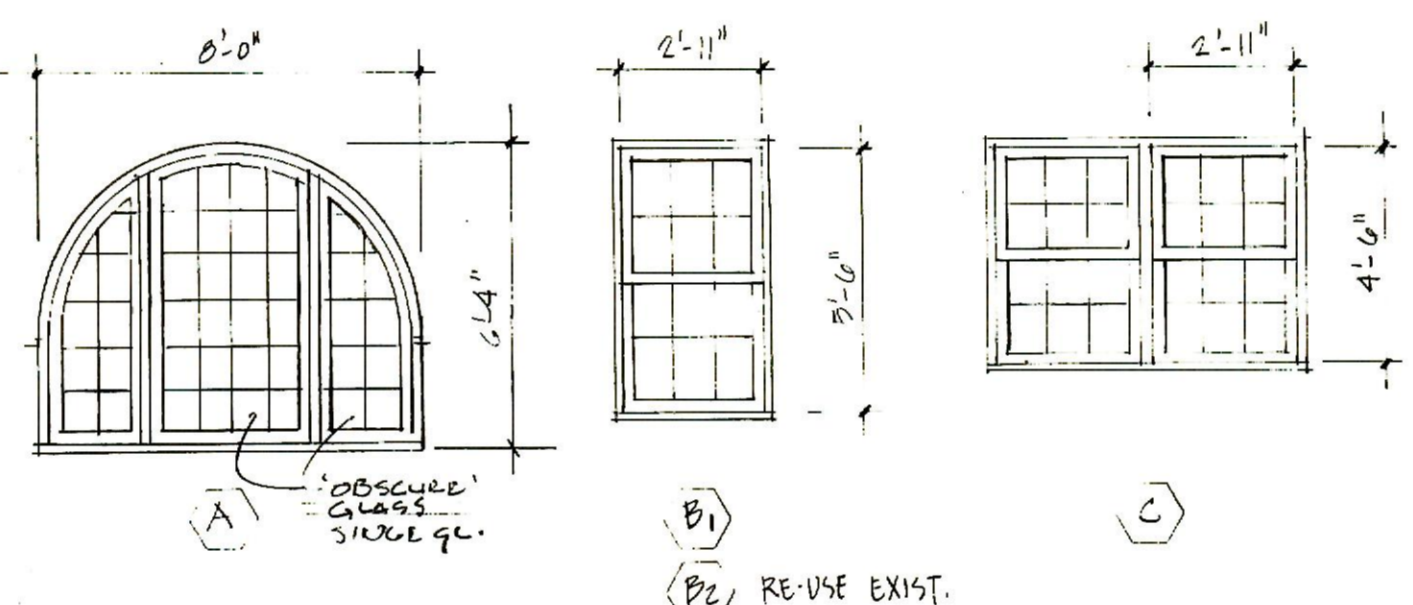
5 BATHROOM



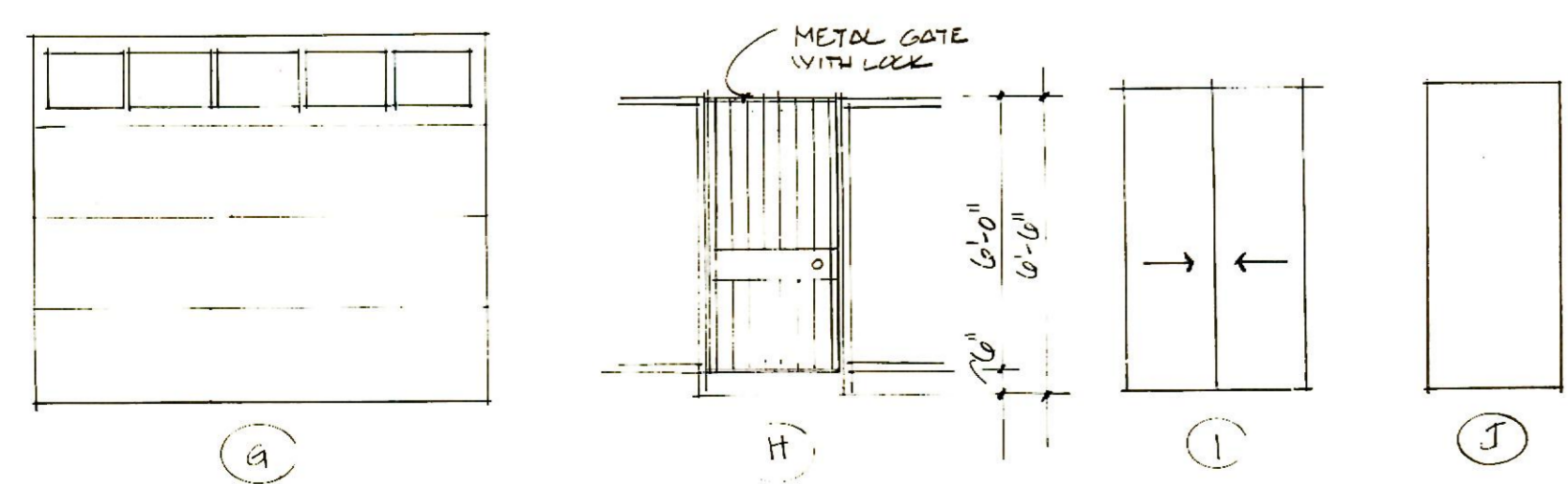
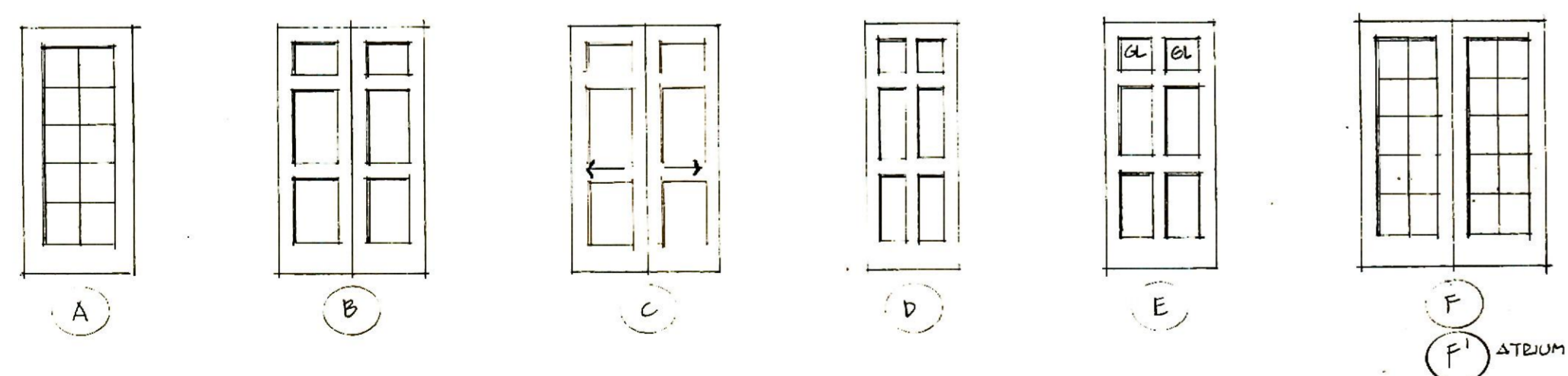
6 HALL STAIR - BSMT PLAN



7 HALL STAIR - SECTION

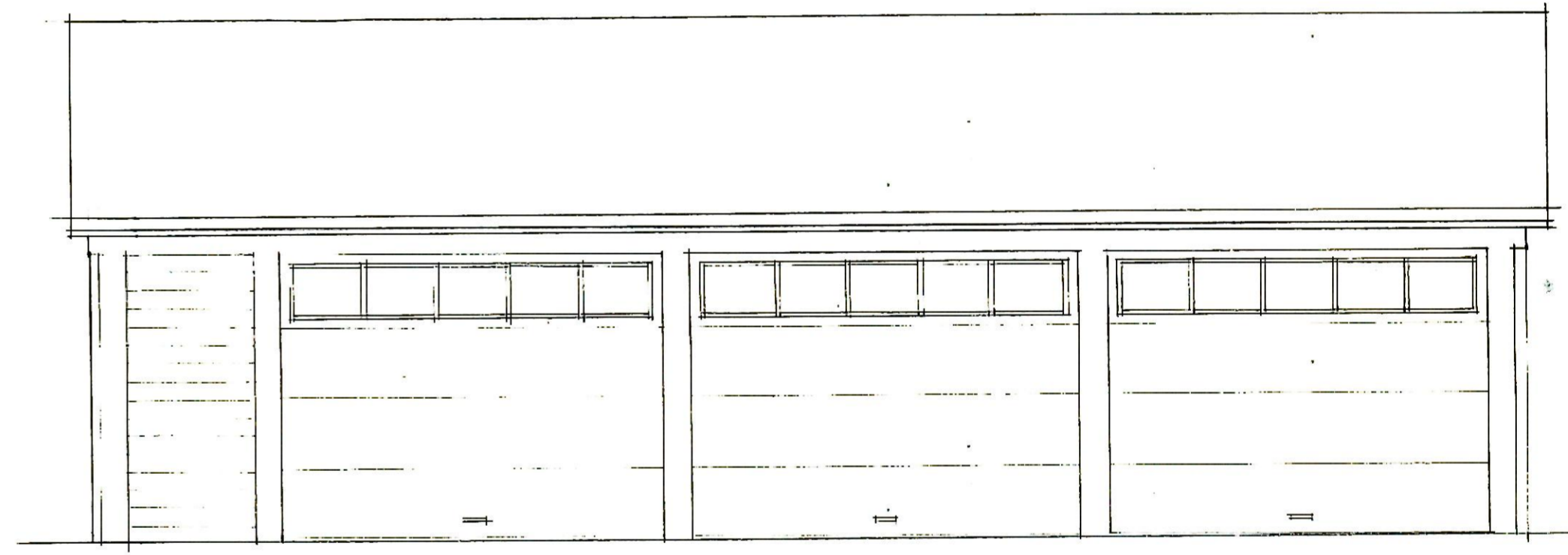


DOOR SCHEDULE														
NUMBER	DOOR				FRAME					HARDWARE SET	THRESHOLD	REMARKS		
	WIDTH	HEIGHT	THICKNESS	MATERIAL	TYPE	LITE	LABEL	MATERIAL	TYPE				HEAD	JAMB
1	2'-0"	6'-8"		6	A									EXTERIOR DOOR w/ FULL PANEL STORM & 'ATELIUM DOOR' w/ SCREEN & TRANSOM *
2	6'-3"	6'-8"		6	A									
3	3'-3"	6'-8"		6	A									MATCH EXIST. DOORS TO LIVING ROOM
4	3'-0"	6'-8"		6	B									POCKET DOOR - HEAVY DUTY ROLLERS
5	4'-0"	6'-8"		6	C									RE USE EXISTING
6	2'-4"	6'-8"		6	D									
7	2'-6"	6'-8"		6	D									
8	2'-6"	6'-8"		6	D									
9	2'-6"	6'-8"		6	D									
10	3'-0"	6'-8"		6	E									
11	3'-0"	6'-8"		6	E									
12														NOT USED
13	5'-0"	6'-8"		6	F									
14	10'-0"	8'-0"		6	G									GARAGE DOOR (2 WITH AUTO OPENER)
15	3'-0"	6'-0"		6	H									IRON GATE PICKETTS 4" O.C.
16														
17														
18														
19	3'-4"	6'-3"		6	I									AT BSMT - EXTERIOR
20	2'-8"	6'-3"		6	J									AT BSMT - INTERIOR / DOSE OF STAIR
														* WITH TRANSOM



8 DOOR TYPES

9 WINDOW TYPES



10 GARAGE ELEVATION

KLINEFELTER RES.
530 GREENWOOD RD.
TOWSON, MARYLAND
SMDA/ARCH. 2.26.93